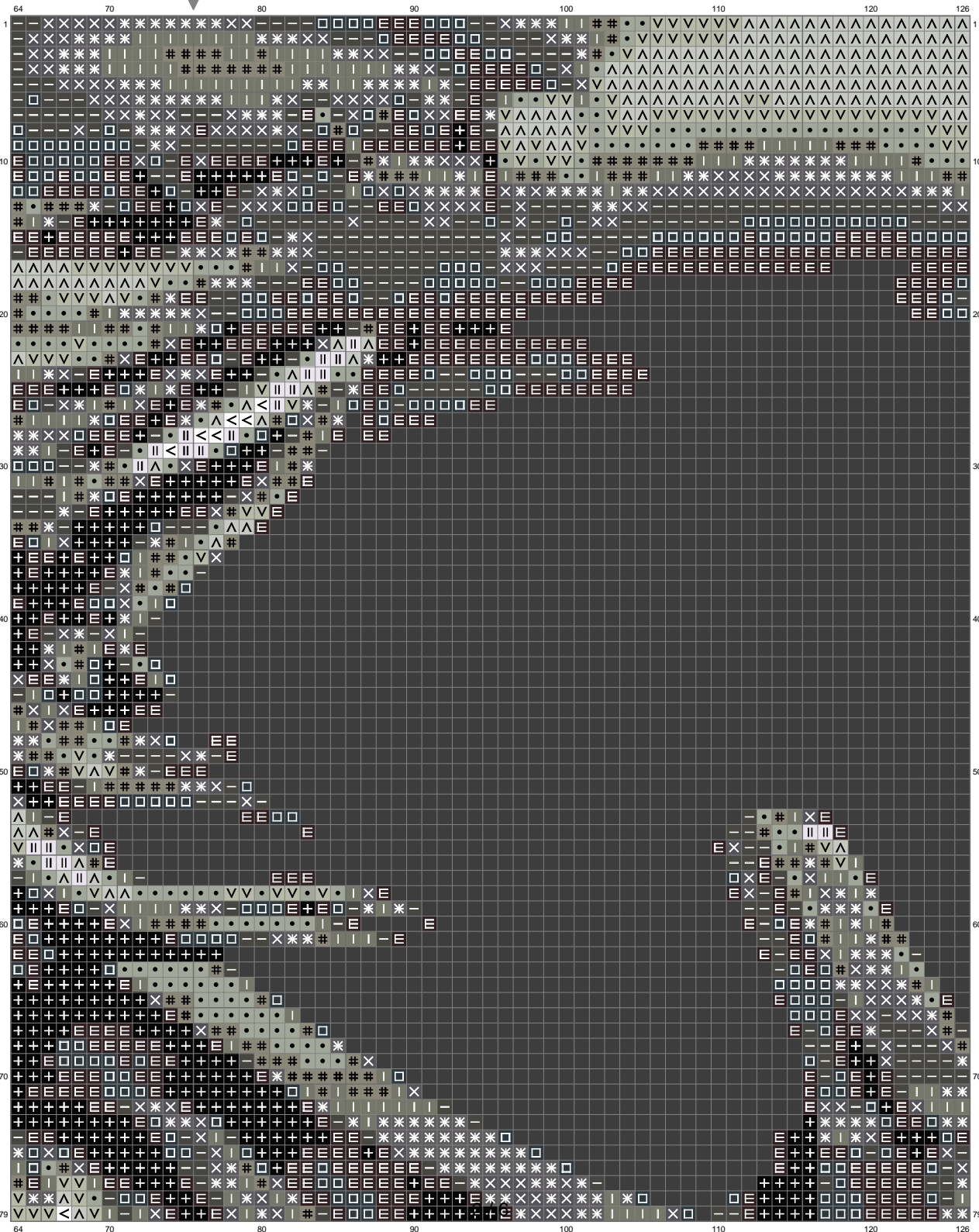


link b and w



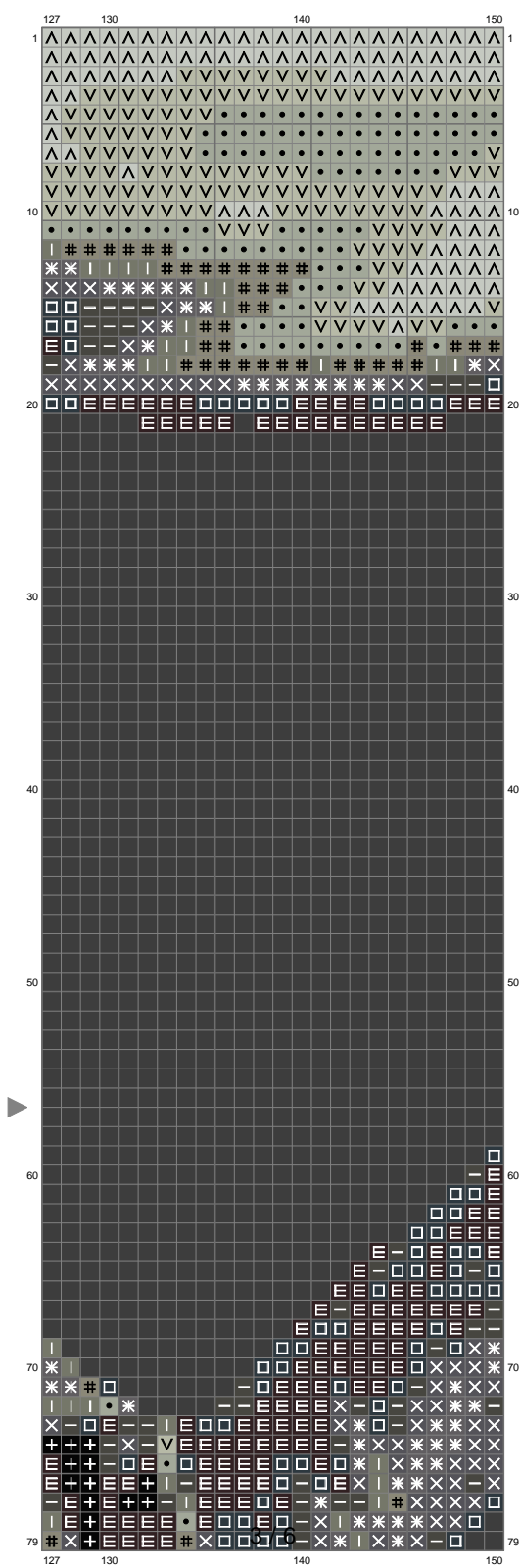
(This chart is printed using KG-Chart LE for Cross Stitch.)

## link b and w



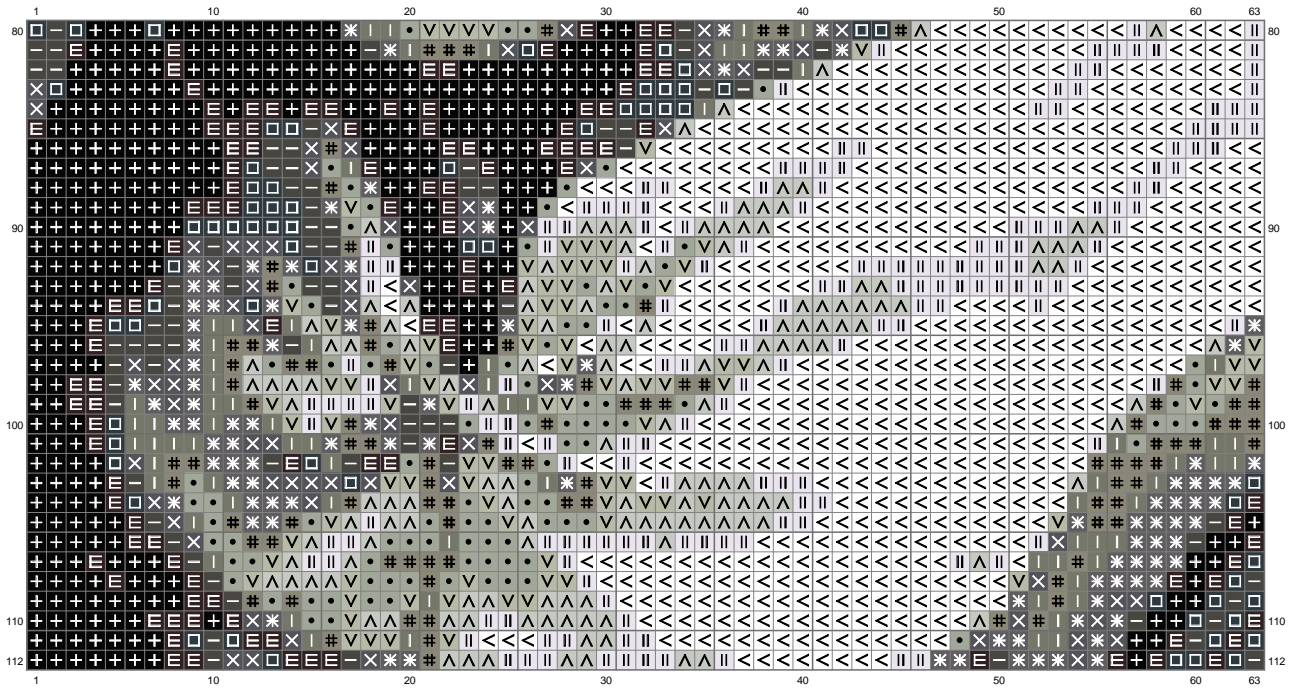
(This chart is printed using KG-Chart LE for Cross Stitch.)

link b and w

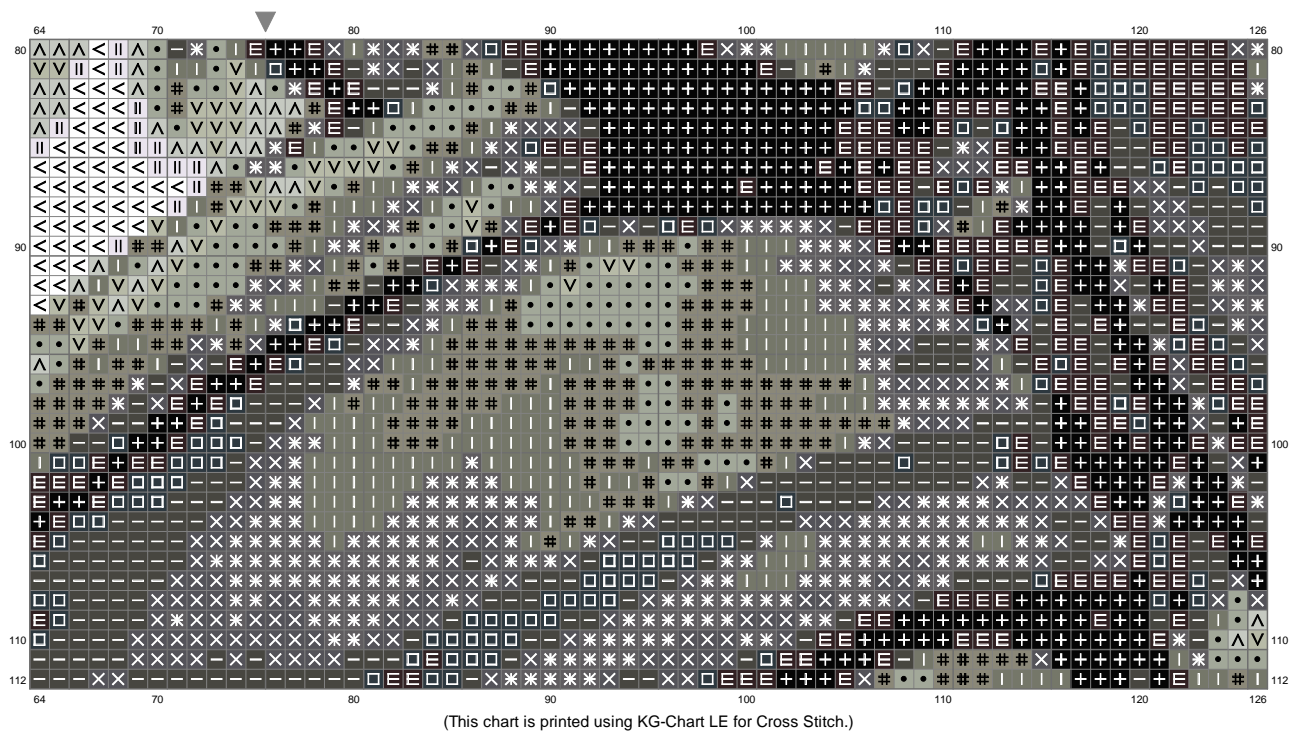


(This chart is printed using KG-Chart LE for Cross Stitch.)

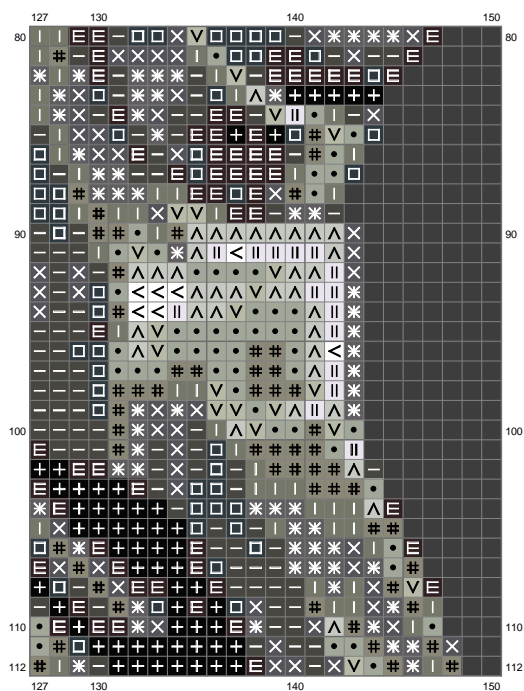
## link b and w



link b and w



link b and w



(This chart is printed using KG-Chart LE for Cross Stitch.)

Stitch Count:150w x 112h // Cloth:Aida    Cloth's Color:Black

Finished Size:42.33 cm x 31.60 cm (18 ct./inch) // Total 13 Colors

Color Table (DMC)

**Cross Stitch**

	310	(1398 ct)
	939	(1334 ct)
	500	(848 ct)
	3021	(1195 ct)
	3799	(875 ct)
	535	(1054 ct)
	3787	(865 ct)
	640	(991 ct)
	3022	(1151 ct)
	523	(767 ct)
	3023	(942 ct)
	762	(549 ct)
	B5200	(1298 ct)