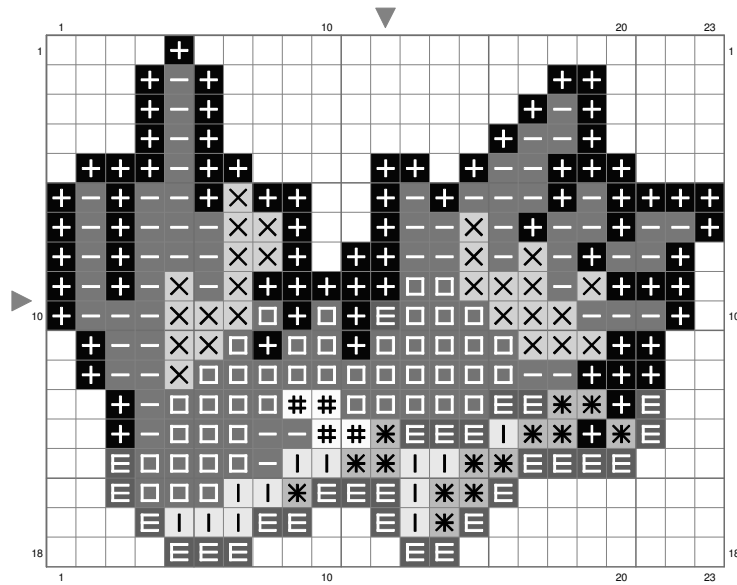


# Quilava



Stitch Count: 23w x 18h // Cloth: Aida Cloth's Color: White

Finished Size: 6.49 cm x 5.08 cm (18 ct./inch) // Total 8 Colors

## Color Table (DMC)

### Cross Stitch

+	310	(77 ct)
E	535	(28 ct)
X	3787	(45 ct)
-	900	(59 ct)
X	444	(26 ct)
*	166	(14 ct)
I	744	(12 ct)
#	BLANC	(4 ct)