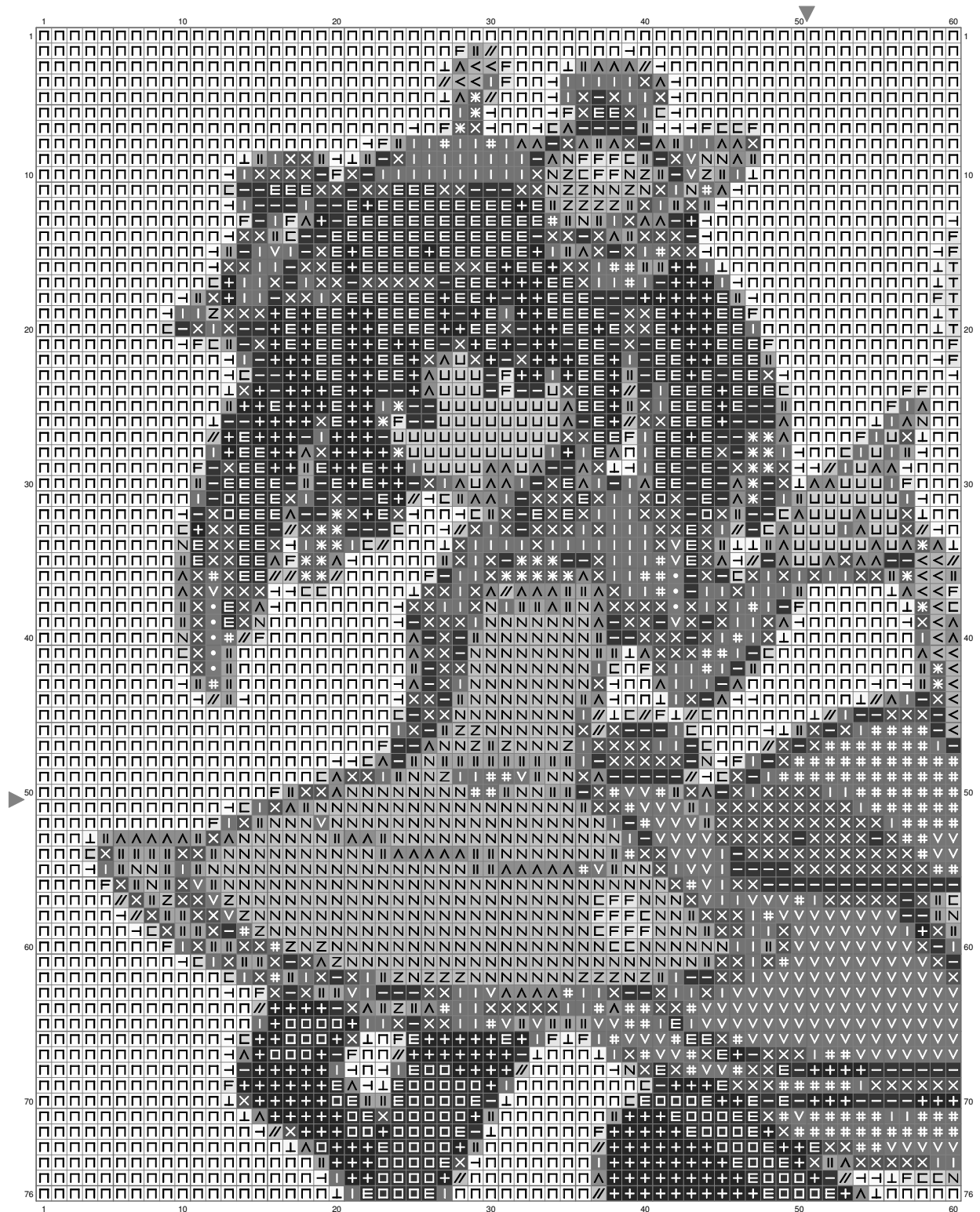
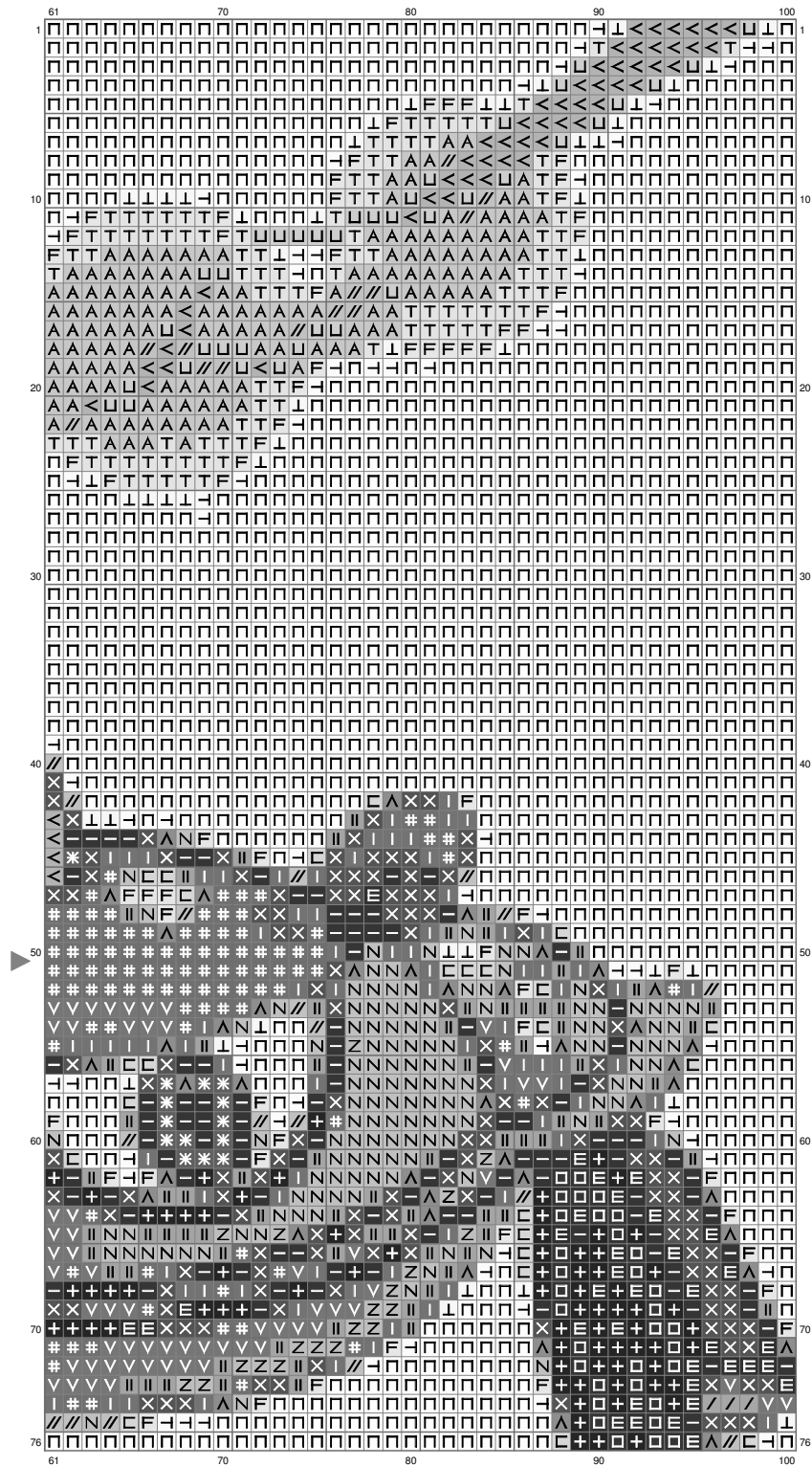


# Untitled



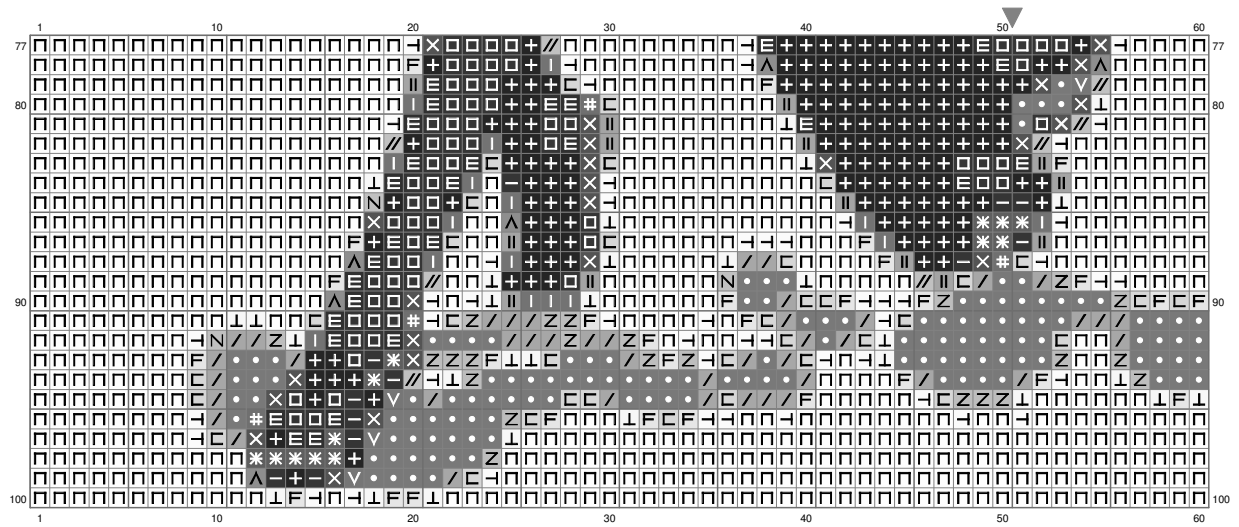
(This chart is printed using KG-Chart LE for Cross Stitch.)

# Untitled

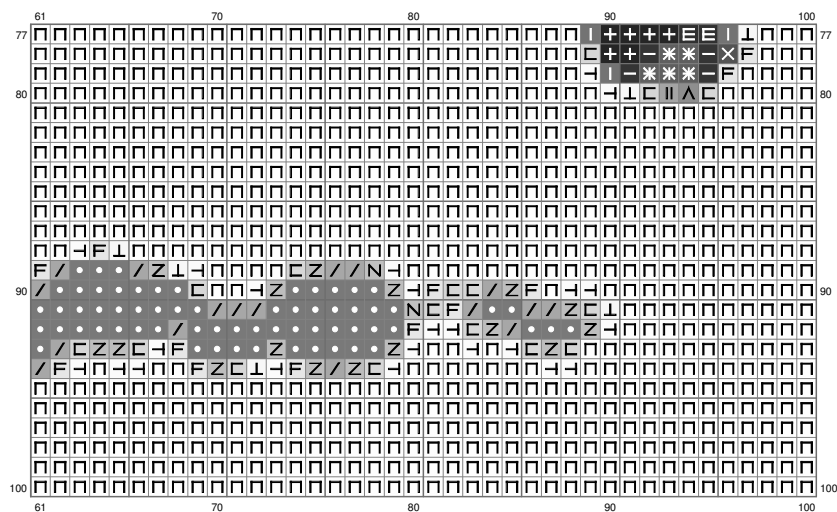


(This chart is printed using KG-Chart LE for Cross Stitch.)

# Untitled



# Untitled



(This chart is printed using KG-Chart LE for Cross Stitch.)


























# Untitled

Stitch Count:100w x 100h  
Cloth:Aida Cloth's Color:White  
Finished Size:28.22 cm x 28.22 cm (18 ct./inch)  
Total 25 Colors

## Color Table (DMC)

---

### Cross Stitch

|   |       |           |
|---|-------|-----------|
|    | 939   | (501 ct)  |
|    | 823   | (329 ct)  |
|    | 500   | (171 ct)  |
|    | 3371  | (365 ct)  |
|    | 3362  | (564 ct)  |
|    | 780   | (68 ct)   |
|    | 3787  | (352 ct)  |
|    | 317   | (242 ct)  |
|    | 3760  | (204 ct)  |
|    | 3768  | (238 ct)  |
|   | 611   | (182 ct)  |
|  | 3022  | (242 ct)  |
|  | 3820  | (76 ct)   |
|  | 676   | (118 ct)  |
|  | 807   | (63 ct)   |
|  | 932   | (92 ct)   |
|  | 927   | (494 ct)  |
|  | 452   | (79 ct)   |
|  | 3609  | (147 ct)  |
|  | 928   | (127 ct)  |
|  | 762   | (170 ct)  |
|  | 963   | (106 ct)  |
|  | 3865  | (129 ct)  |
|  | BLANC | (233 ct)  |
|  | B5200 | (4708 ct) |