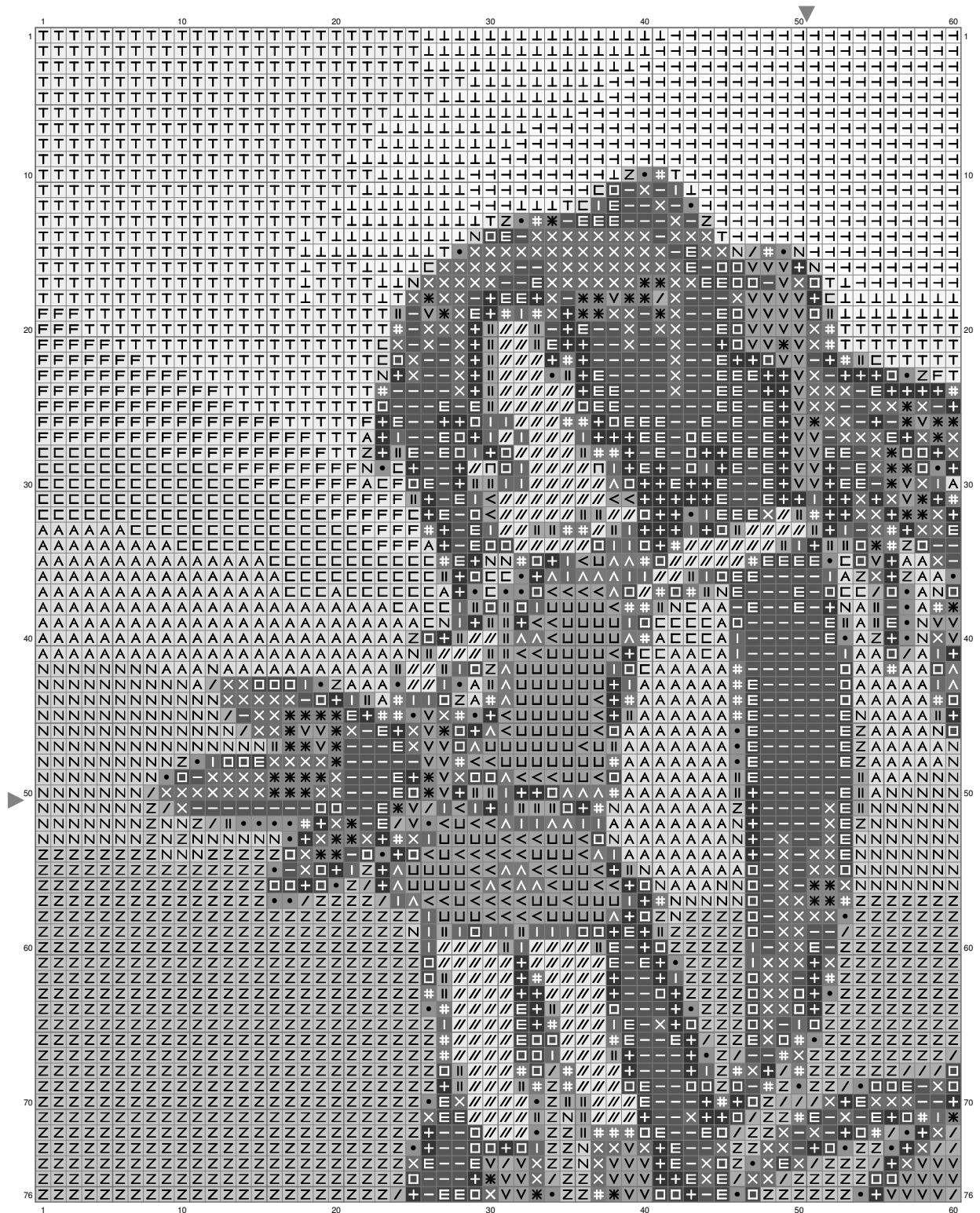
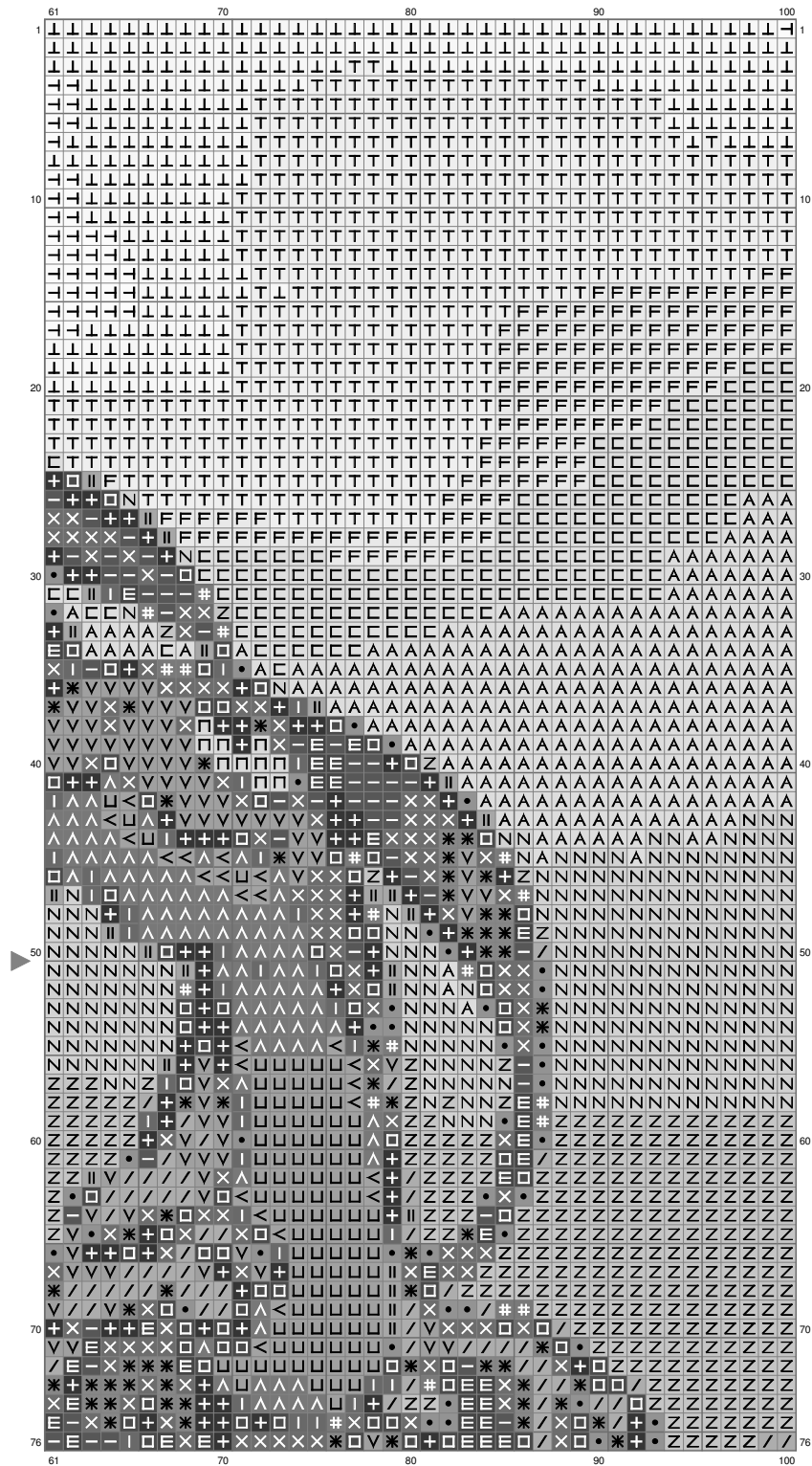


Untitled



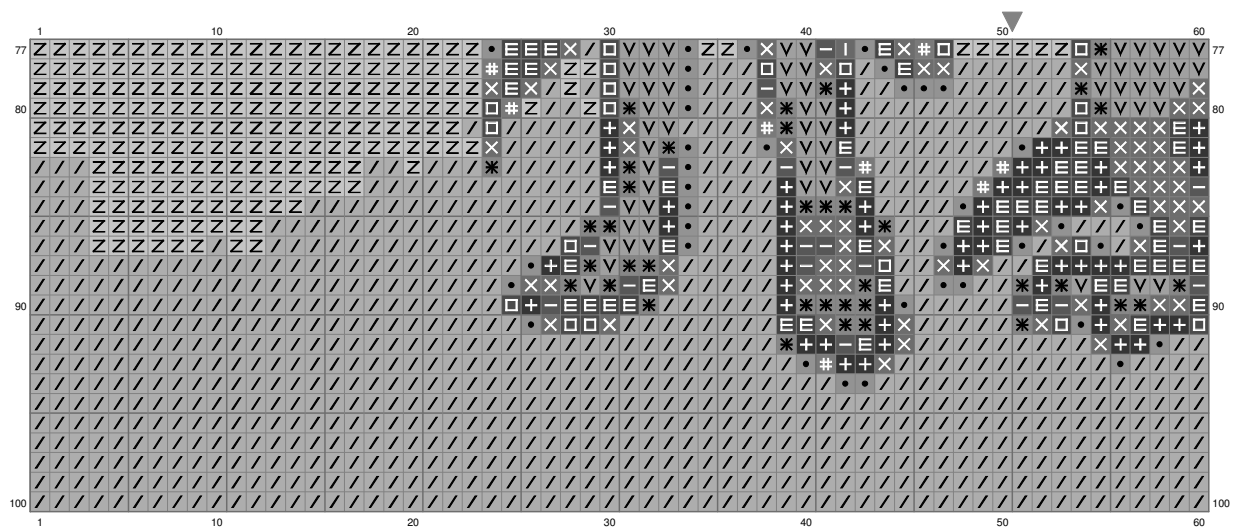
(This chart is printed using KG-Chart LE for Cross Stitch.)

Untitled

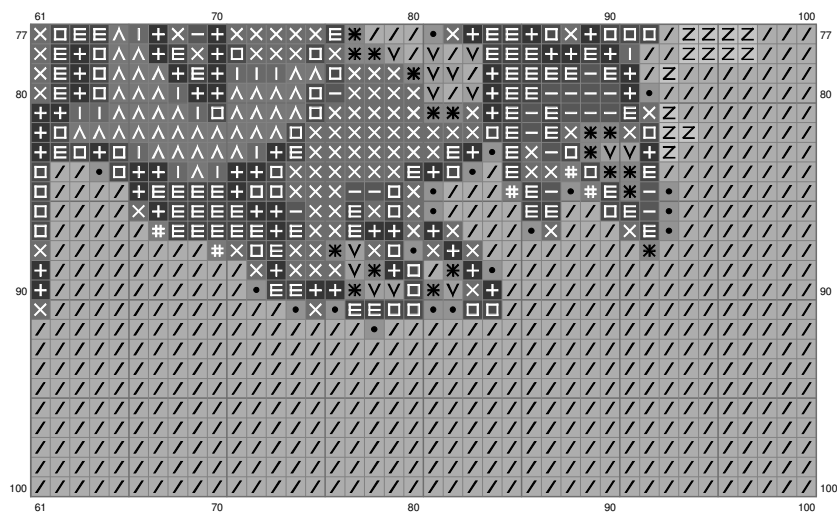


(This chart is printed using KG-Chart LE for Cross Stitch.)

Untitled



Untitled




























(This chart is printed using KG-Chart LE for Cross Stitch.)

Untitled

Stitch Count:100w x 100h
Cloth:Aida Cloth's Color:White
Finished Size:28.22 cm x 28.22 cm (18 ct./inch)
Total 25 Colors

Color Table (DMC)

Cross Stitch

	3371	(399 ct)
	3021	(297 ct)
	3031	(298 ct)
	3345	(395 ct)
	987	(509 ct)
	702	(179 ct)
	610	(133 ct)
	3790	(111 ct)
	3364	(164 ct)
	703	(243 ct)
	400	(168 ct)
	372	(106 ct)
	3826	(88 ct)
	351	(202 ct)
	368	(1549 ct)
	966	(1244 ct)
	164	(509 ct)
	744	(182 ct)
	772	(644 ct)
	644	(358 ct)
	822	(294 ct)
	ECRU	(1051 ct)
	3865	(479 ct)
	BLANC	(386 ct)
	973	(12 ct)