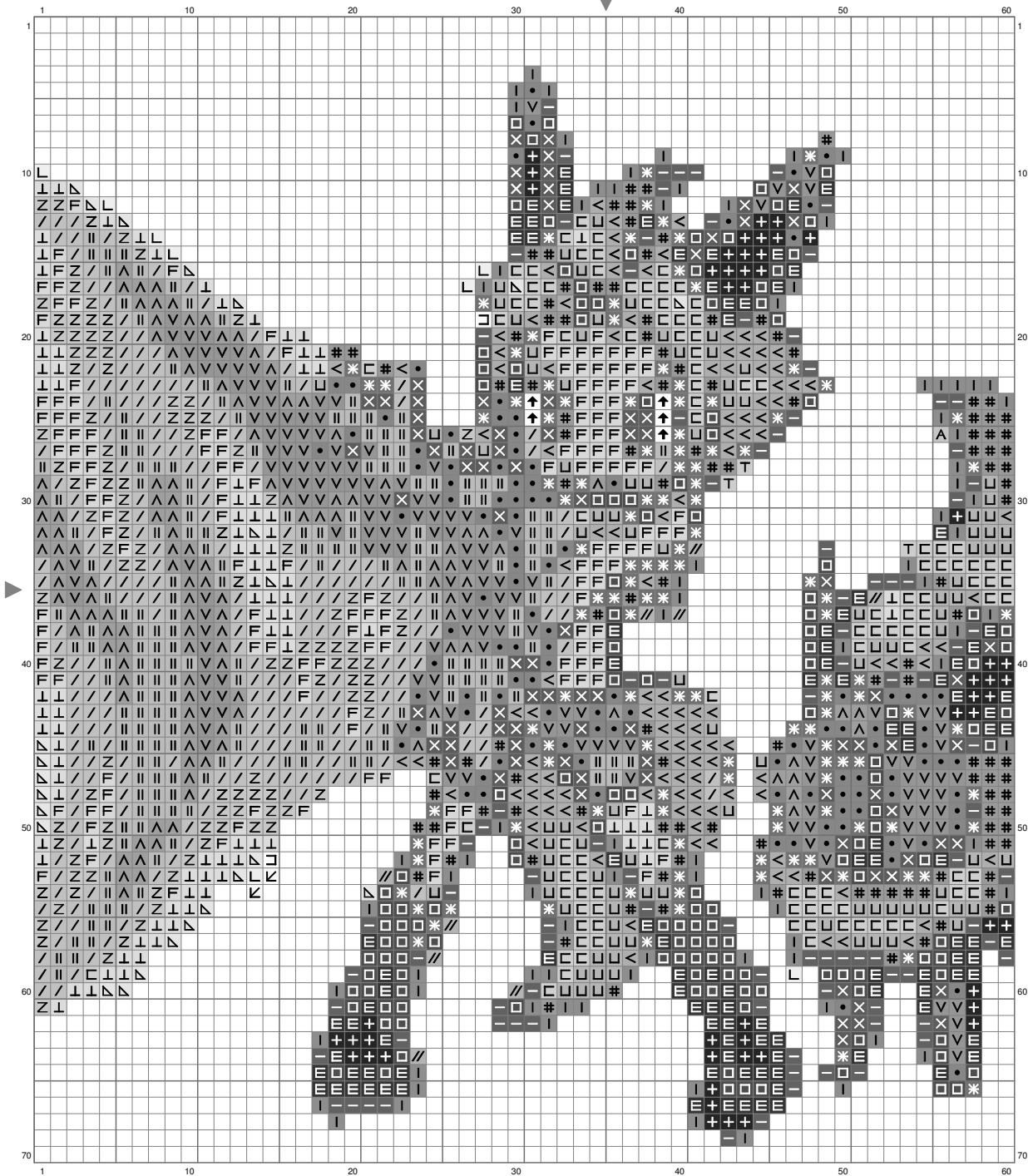
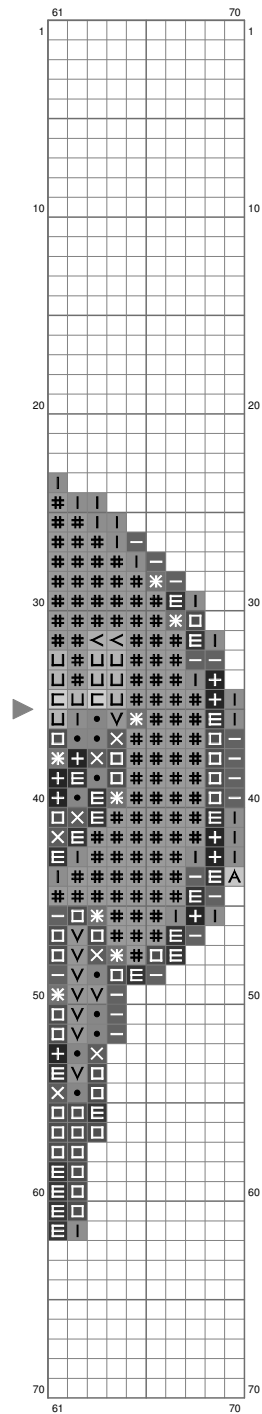


Untitled



Untitled



(This chart is printed using KG-Chart LE for Cross Stitch.)

Stitch Count:70w x 70h

Cloth:Aida Cloth's Color:White

Finished Size:19.75 cm x 19.75 cm

(18 ct./inch)

Total 27 Colors

Color Table (DMC)

Cross Stitch

	939	(60 ct)
	3371	(130 ct)
	898	(174 ct)
	3781	(114 ct)
	918	(95 ct)
	434	(133 ct)
	611	(108 ct)
	370	(218 ct)
	782	(124 ct)
	3853	(170 ct)
	741	(125 ct)
	728	(200 ct)
	729	(124 ct)
	422	(106 ct)
	3854	(238 ct)
	3856	(110 ct)
	642	(9 ct)
	3023	(2 ct)
	676	(108 ct)
	3855	(155 ct)
	613	(3 ct)
	738	(95 ct)
	543	(24 ct)
	ECRU	(8 ct)
	3865	(2 ct)
	B5200	(5 ct)
	BLANC	(2 ct)