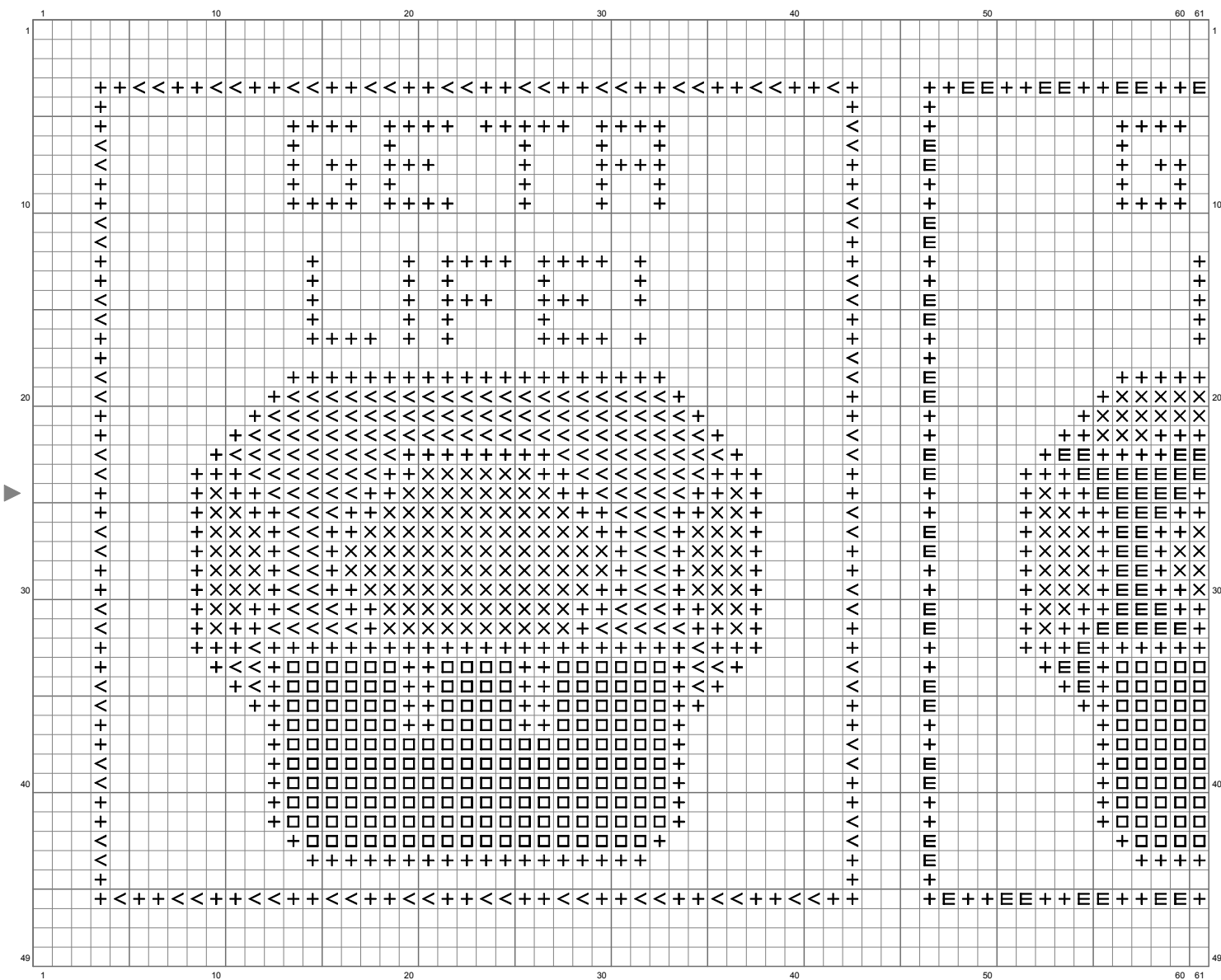
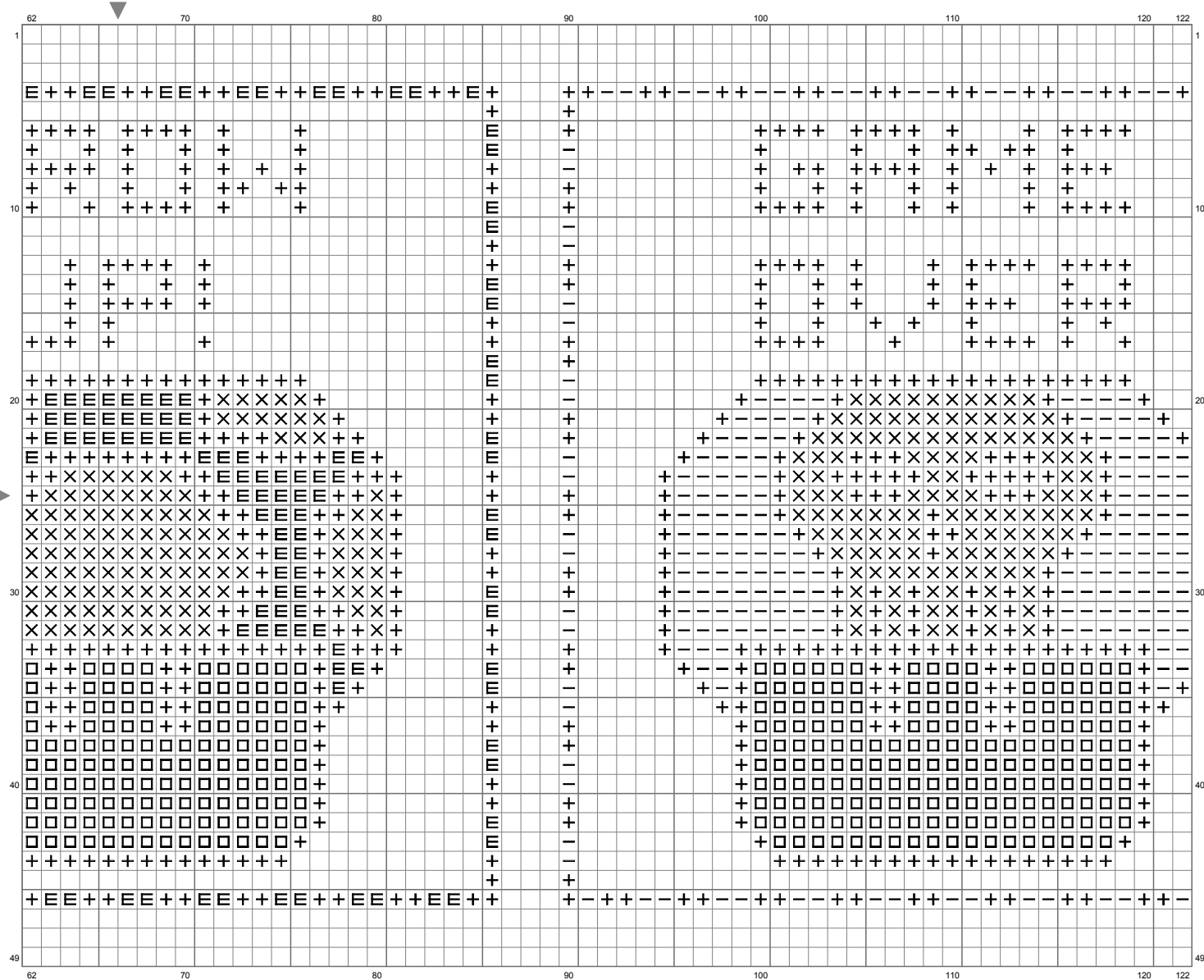


Mushrooms



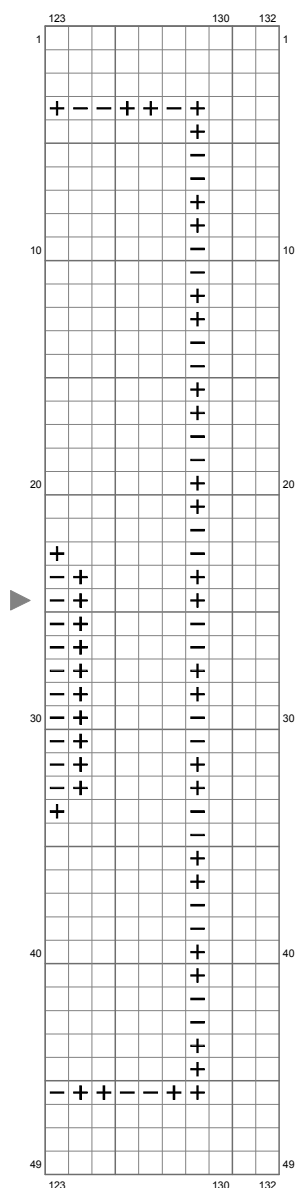
(This chart is printed using KG-Chart LE for Cross Stitch.)

Mushrooms



(This chart is printed using KG-Chart LE for Cross Stitch.)

Mushrooms



(This chart is printed using KG-Chart LE for Cross Stitch.)

Stitch Count:132w x 49h // Cloth:Aida Cloth's Color:White
 Finished Size:41.91 cm x 15.55 cm (16 ct./inch) // Total 6 Colors

Color Table (DMC)

Cross Stitch

| | | |
|---|-------|-----------|
| × | BLANC | (420 ct) |
| □ | ECRU | (546 ct) |
| + | 310 | (1145 ct) |
| < | 702 | (232 ct) |
| E | 666 | (182 ct) |
| — | 333 | (242 ct) |