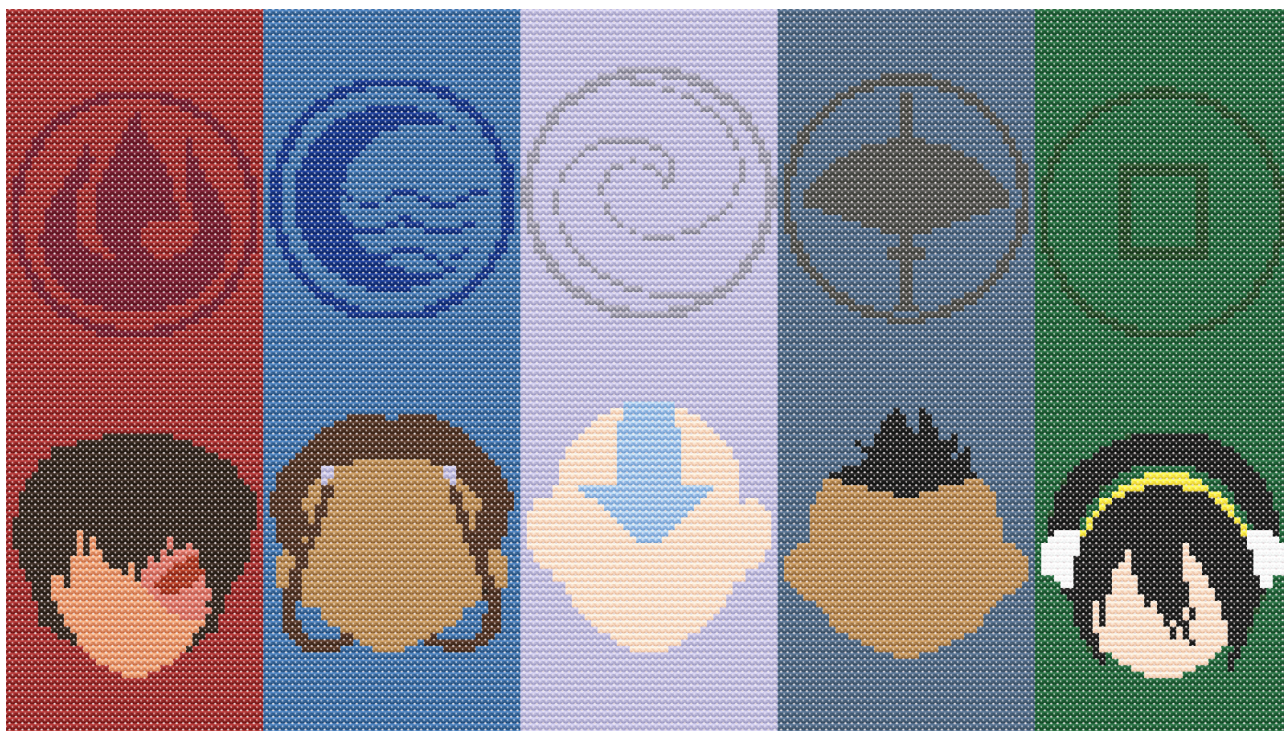


Brk4B59_png

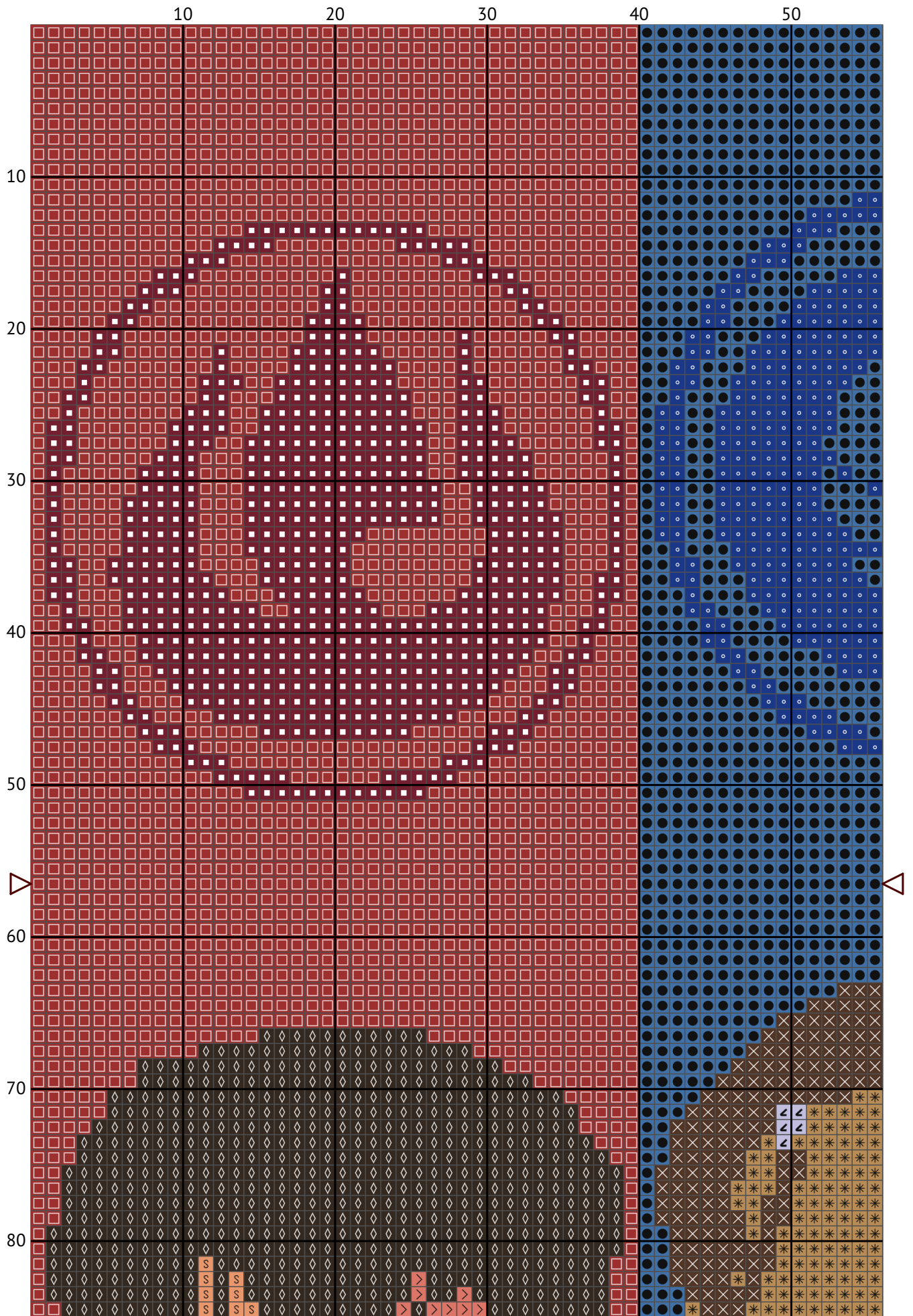
Cross stitch chart

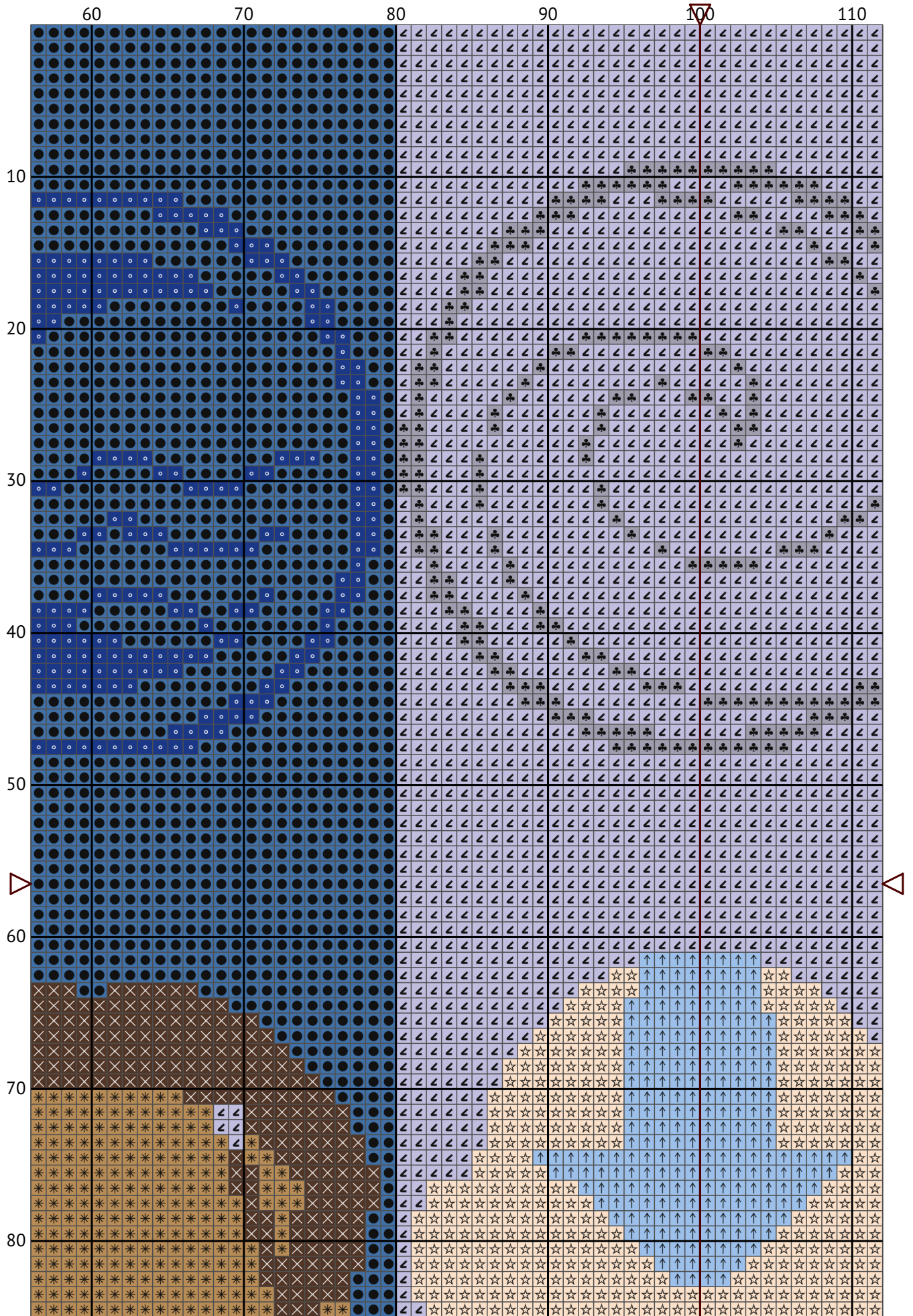


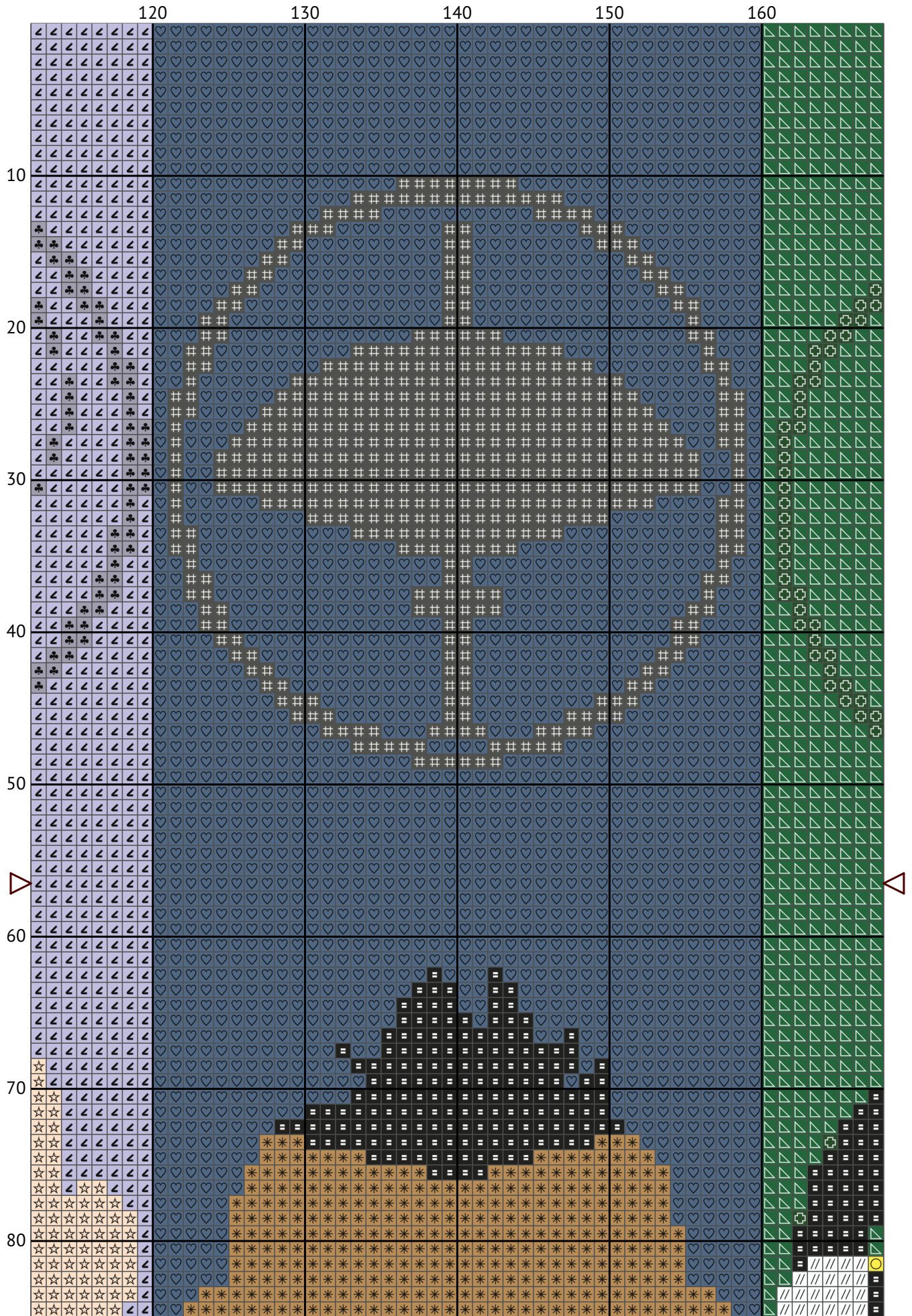
Design size: 200 x 113 stitches

Chart imported from image

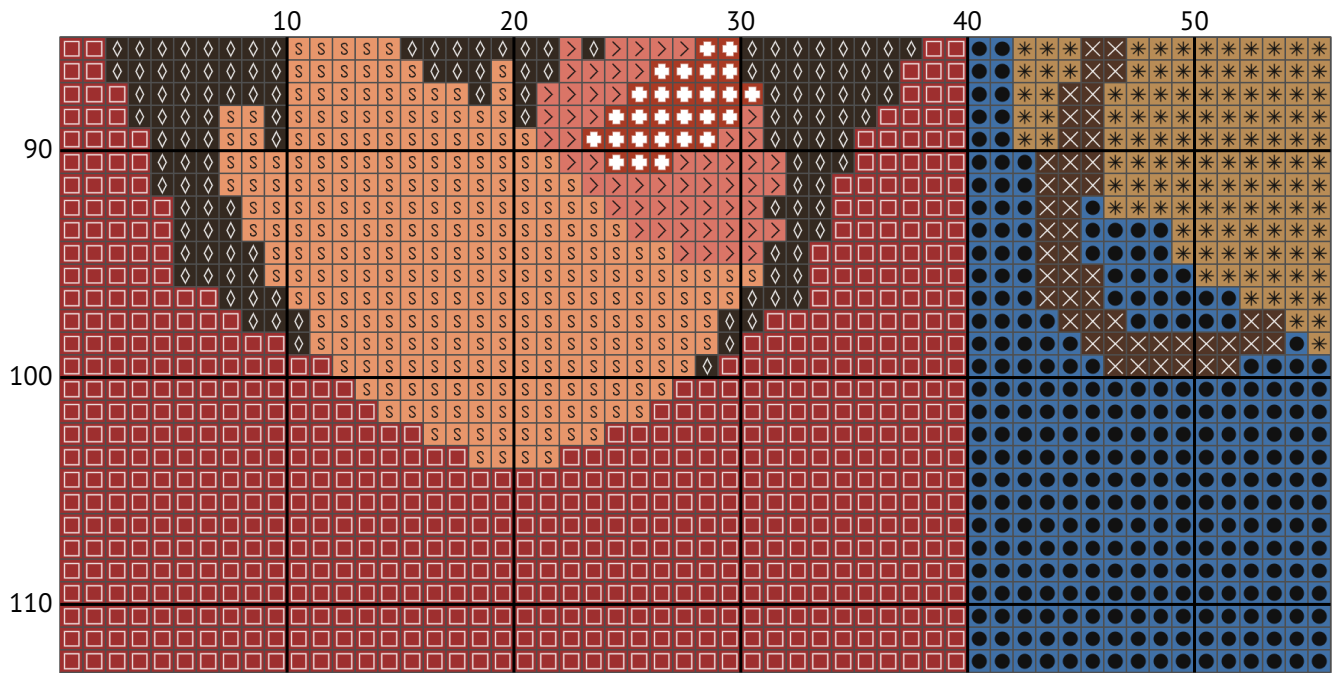
Brk4B59_png

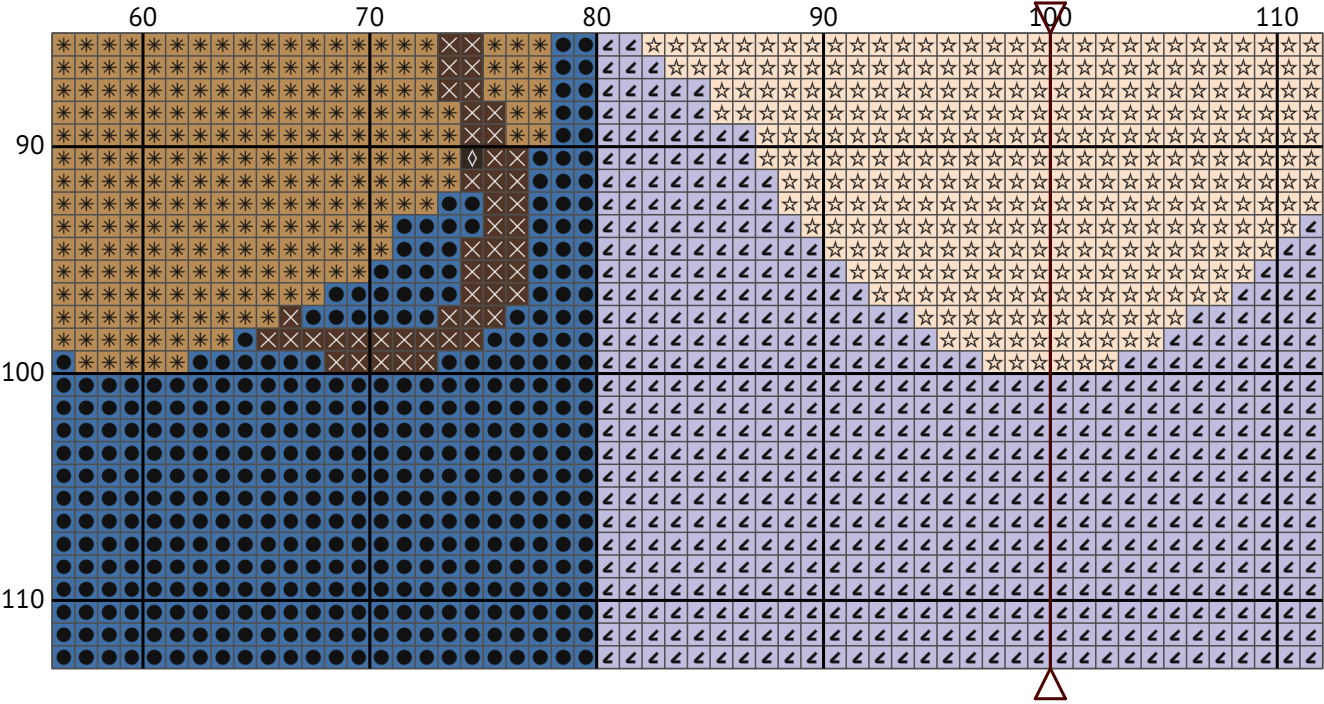


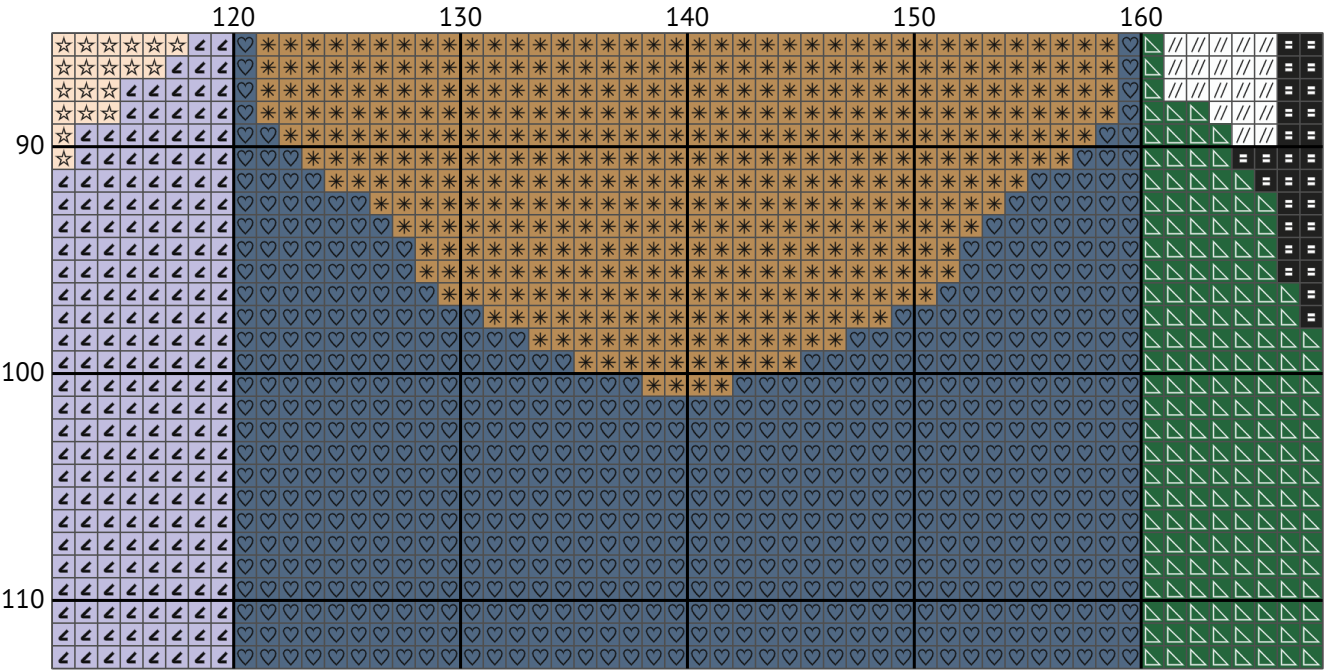


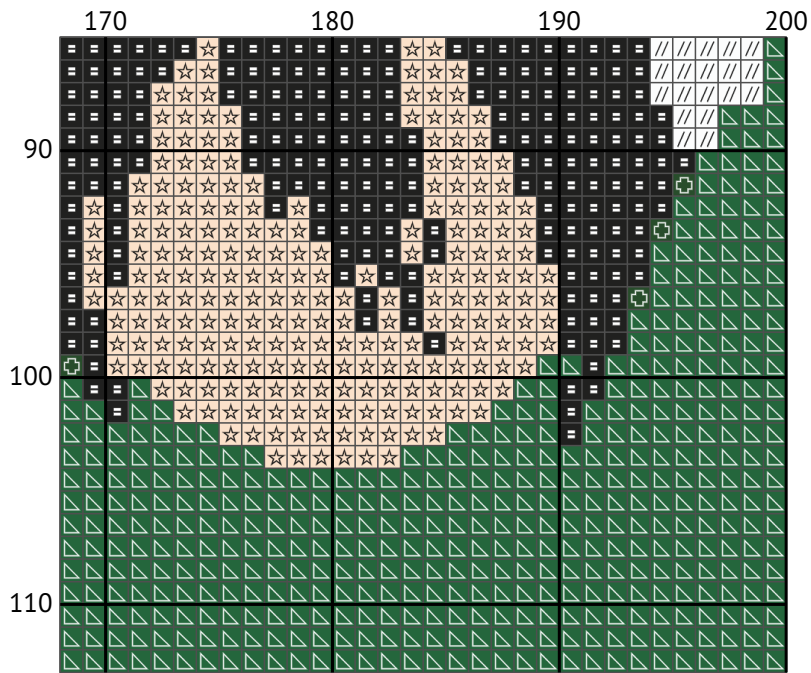


Brk4B59_png






























Floss list for crosses

Use 2 strands of thread for cross stitch

N	Symbol	Number	Name	Stitches
1	>		DMC 21 Alizarin - Light	63
2	//		DMC B5200 Snow White	80
3	↙		DMC 26 Lavender - Pale	3230
4	*		DMC 167 Khaki Brown	1420
5	○		DMC 307 Lemon	45
6	=		DMC 310 Black	855
7	♣		DMC 318 Steel Gray - Light	290
8	S		DMC 402 Mahogany - Very Light	268
9	●		DMC 517 Wedgewood - Dark	2872
10	↑		DMC 800 Delft Blue - Pale	233
11	■		DMC 814 Garnet - Dark	676
12	◦		DMC 820 Royal Blue - Very Dark	508
13	⊕		DMC 890 Pistachio Green - Ultra Dark	265
14	⊕		DMC 919 Red Copper	27
15	♥		DMC 930 Antique Blue - Dark	3048
16	×		DMC 938 Coffee Brown - Ultra Dark	453
17	◇		DMC 3371 Black Brown	723
18	☆		DMC 3774 Desert Sand - Very Light	1007
19	□		DMC 3777 Terra Cotta - Very Dark	2764
20	⦿		DMC 3799 Pewter Gray - Very Dark	557
21	△		DMC 3818 Emerald Green - Ultra Very Dark	3216