



AMPHAROS Mega

200 x 221 stitches

35 DMC colors

Designed by **Ovi crossStitch**

2019, 8th July

YouTube: Ovi crossStitch (<https://www.youtube.com/channel/UCrTRFrbA4LW6fpe2IYIFVGw>)

Etsy: OvicrossStitch (<https://www.etsy.com/shop/OvicrossStitch>)

Congratulations!

You are about to stitch a custom made cross stitch design. Thank you for choosing this cross stitch pattern!

Before you begin, there are a few things you should know:

FABRIC:

- you can use either a BLACK fabric or any color you want, but if you use a black fabric, there is no need to stitch the black background, but you must stitch the black stitches from INSIDE the pattern.
- this cross stitch pattern was designed for **18 count** fabric;
- you will find at the end of the chart other fabric counts, so you know which one is more suitable for you but mostly to cut a correct size of fabric;
- do not forget to include extra fabric for every margins!

THREAD/FLOSS:

- this custom cross stitch design uses **DMC** thread/floss.
 - do not convert the DMC to any other thread, no matter what. I cannot guarantee the finished stitched pattern will look great if you convert the DMC to other thread/floss brand.
 - I also added an extra 25% thread/floss per every color.
- The quantities of thread/floss are calculated for cross stitch plus 25% extra, and you can stitch it either using cross stitch (x), or tent stitch (/) or continental stitch (/).
- in case you find DMC codes between 01-35, you must know DMC added 35 new colors in 2017 as a permanent action. Do not avoid those colors or replace them by any means.
 - DMC's correct code for white thread is BLANC or WHITE and is not 1 or 01, because 01 is a new color added in 2017. In old patterns you may find 1 being the code for WHITE.

WARNINGS:

DO NOT redistribute this cross stitch pattern!

DO NOT add colors to this pattern!

DO NOT bring modifications of any kind to this cross stitch pattern!

Encountered a problem with this pattern?

Write me A.S.A.P. on ovi.sergiu@gmail.com and specify the problem so I can understand what is the problem and I will fix it. This custom cross stitch pattern was verified and there is only 1% chance you will find an error but if you do, notify me and you will get a discount on your next order.

If you send me pictures with the finished piece, they will be displayed in my online portofolio and you will get a discount on your next order.

Happy stitching!

Ovi CroSStitch

Ovi CroSStitch

Fabric: Aida 18, White
200w X 221h Stitches

Size(s) : 18 Count, 28.22w X 31.19h cm
14 Count, 36.29w X 40.10h cm
25 Count, 20.32w X 22.45h cm
28 Count, 18.14w X 20.05h cm

Order of pages:

Page 1	Page 2	Page 3	Page 4
Page 5	Page 6	Page 7	Page 8
Page 9	Page 10	Page 11	Page 12

		Symbol	Thread/ Floss brand	DMC code	Name of DMC color	Number of stitches	Skein Estimation (including an extra 25%): 1 = 1 skein 0.500 = half of skein etc.
1.		□	DMC	152	MD LT Shell Pink	43	0.017
2.		^	DMC	165	V LT Moss Green	167	0.067
3.		•	DMC	168	V LT Pewter	5373	2.167
4.		✕	DMC	169	LT Pewter	458	0.185
5.		1	DMC	224	V LT Shell Pink	51	0.021
6.			DMC	317	Pewter Gray	134	0.054
7.			DMC	356	MD Terra Cotta	121	0.049
8.		/	DMC	372	LT Mustard	894	0.361
9.		☾	DMC	413	DK Pewter Gray	78	0.031
10.		✓	DMC	415	Pearl Gray	293	0.118
11.		∩	DMC	451	DK Shell Gray	281	0.113
12.		△	DMC	535	V LT Ash Gray	414	0.167
13.		3	DMC	640	V DK Beige Gray	205	0.083
14.		H	DMC	644	MD Beige Gray	32	0.013
15.		♡	DMC	646	DK Beaver Gray	316	0.127
16.		~	DMC	648	LT Beaver Gray	313	0.126
17.			DMC	677	V LT Old Gold	392	0.158
18.		-	DMC	744	Pale Yellow	2948	1.189
19.		+	DMC	762	V LT Pearl Gray	516	0.208
20.		#	DMC	779	DK Cocoa	52	0.021
21.		c	DMC	927	LT Gray Green	148	0.060
22.		∩	DMC	3011	DK Khaki Green	84	0.034
23.		L	DMC	3042	LT Antique Violet	166	0.067
24.		a	DMC	3046	MD Yellow Beige	459	0.185
25.		T	DMC	3072	V LT Beaver Gray	261	0.105
26.			DMC	3712	MD Salmon	119	0.048
27.		^	DMC	3721	DK Shell Pink	27	0.011
28.		∇	DMC	3722	MD Shell Pink	172	0.069
29.		↓	DMC	3740	DK Antique Violet	27	0.011
30.		■	DMC	3756	Ultra V LT Baby Blue	496	0.200
31.		n	DMC	3799	V DK Pewter Gray	231	0.093
32.		O	DMC	3823	Ultra Pale Yellow	851	0.343
33.		∅	DMC	3860	Cocoa	38	0.015
34.		⚙	DMC	Ecru	Ecru	50	0.020

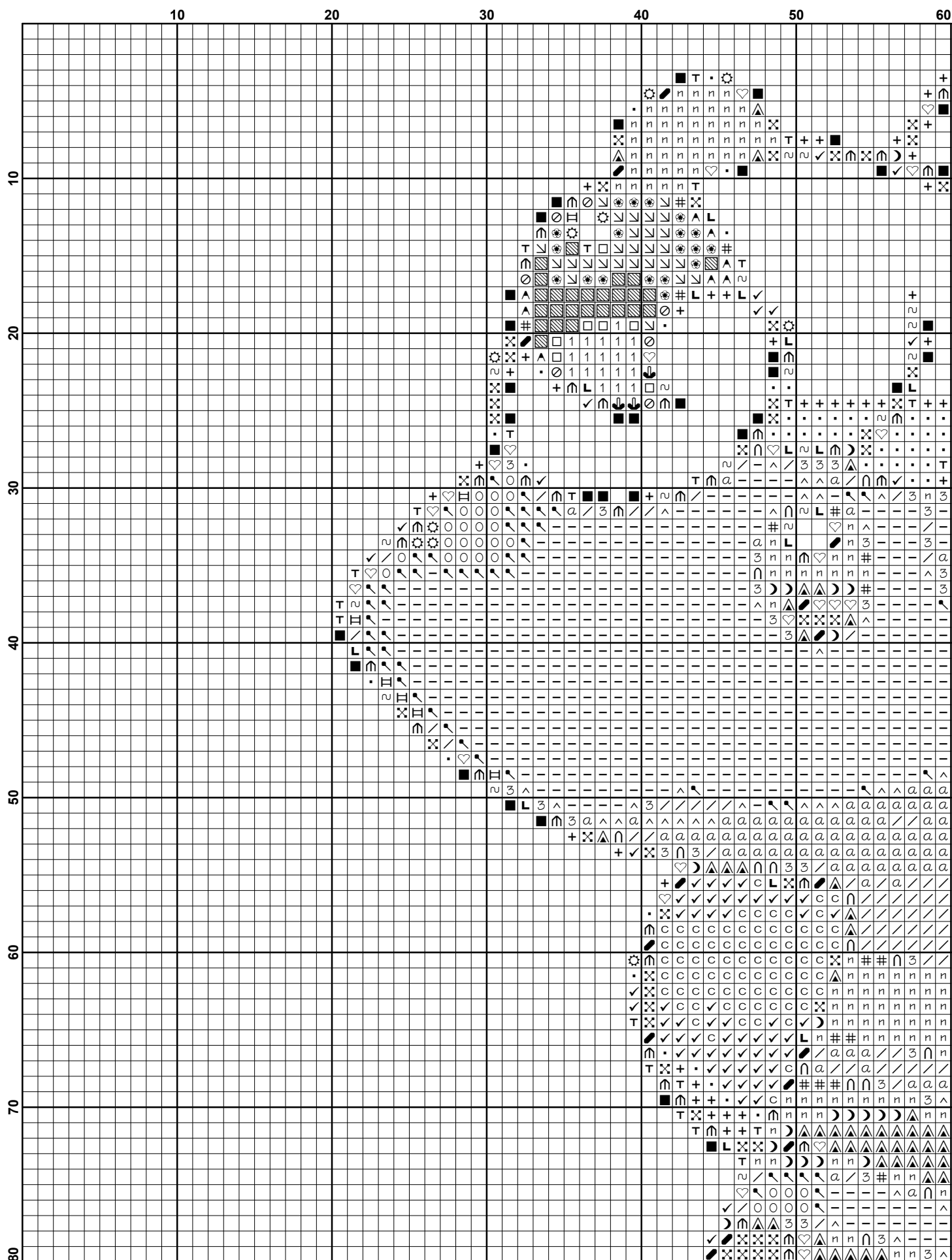
35.		DMC	BLANC White	27990	11.291
-----	--	-----	-------------	-------	--------

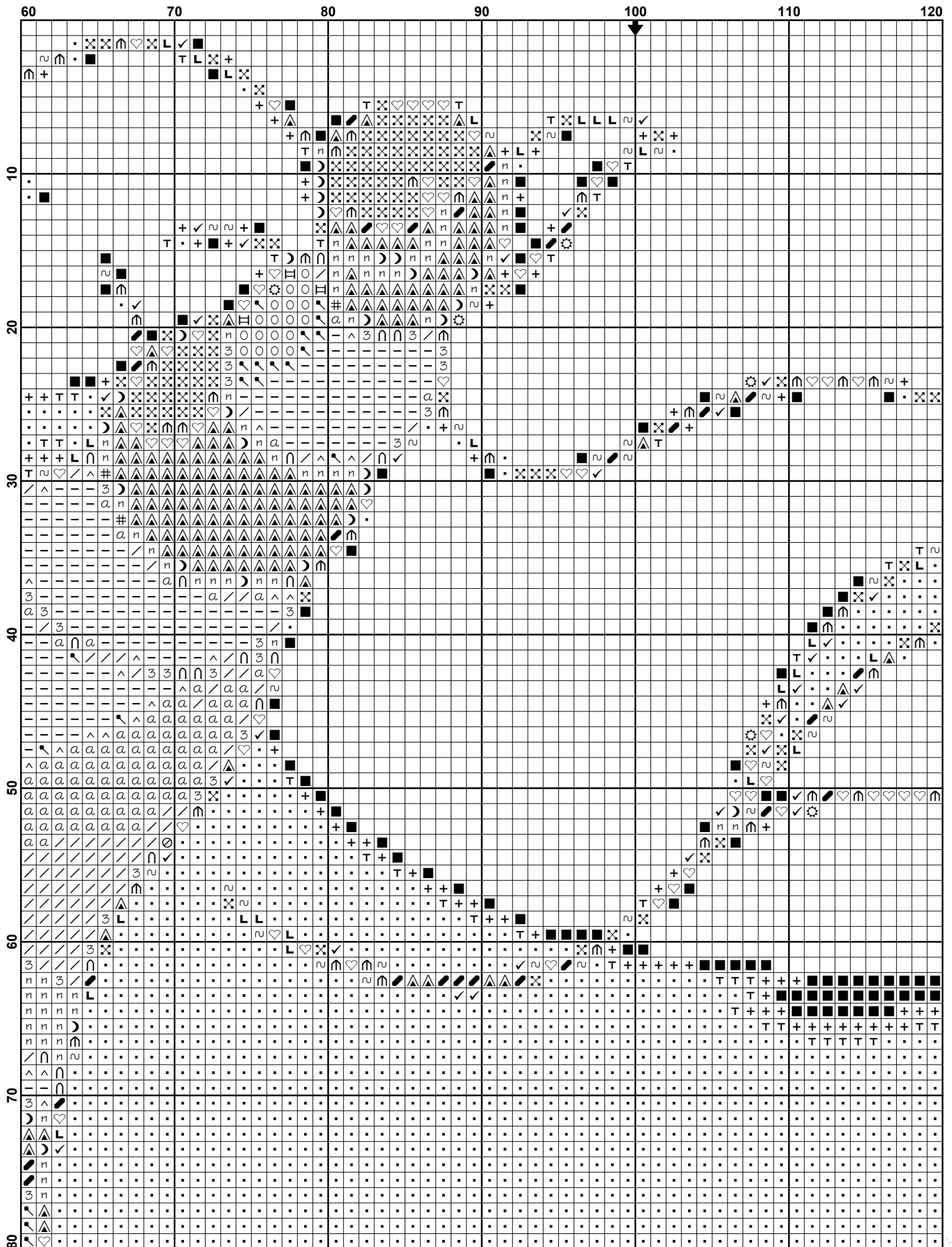
Strands Per ONE Skein: 6

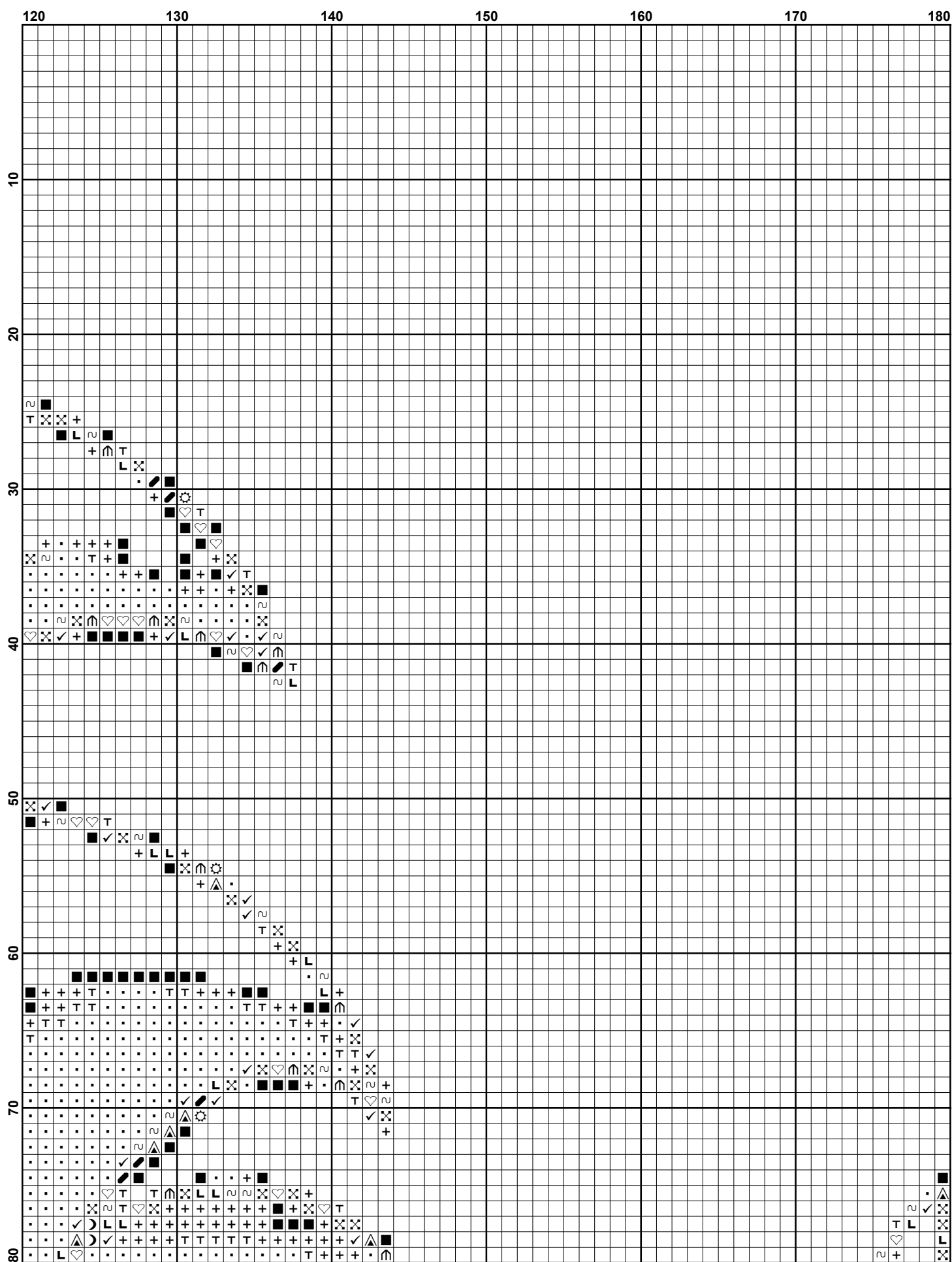
Skein Length: 313.0 in

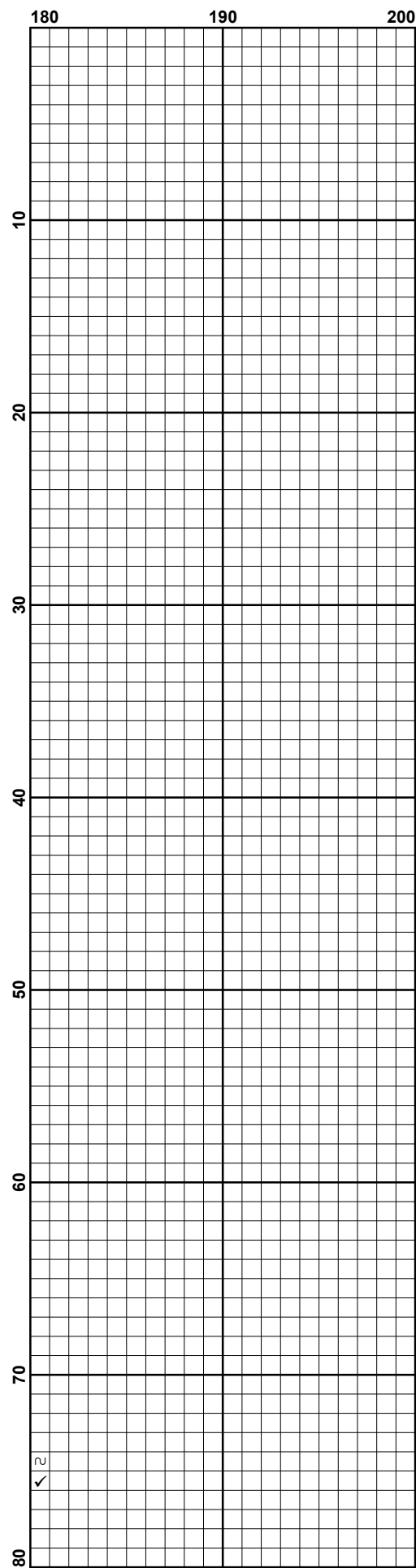
The thread quantities are calculated if stitching with 2 strands.

!!! BLANC DMC does not have any symbol for easier stitching/symbol following

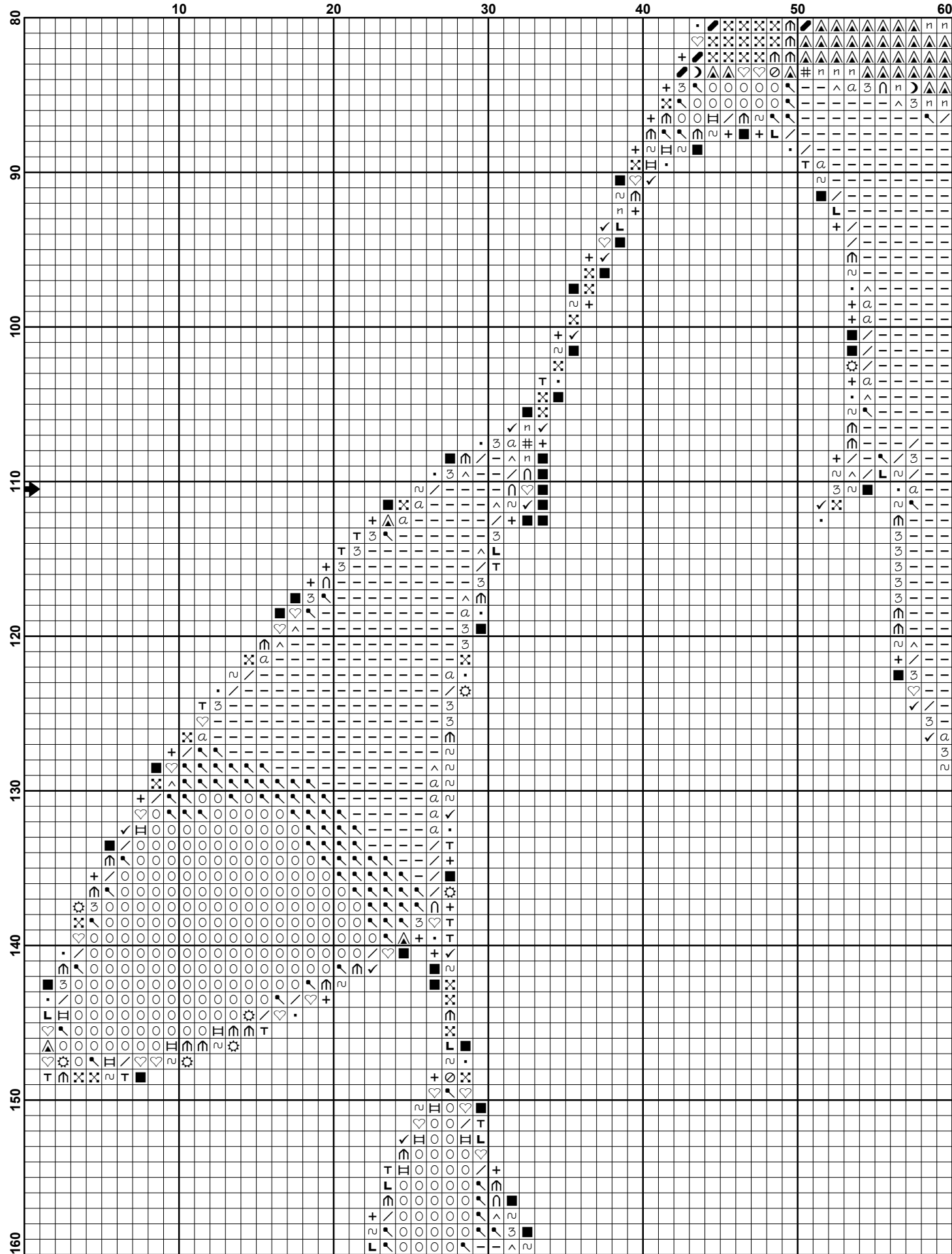


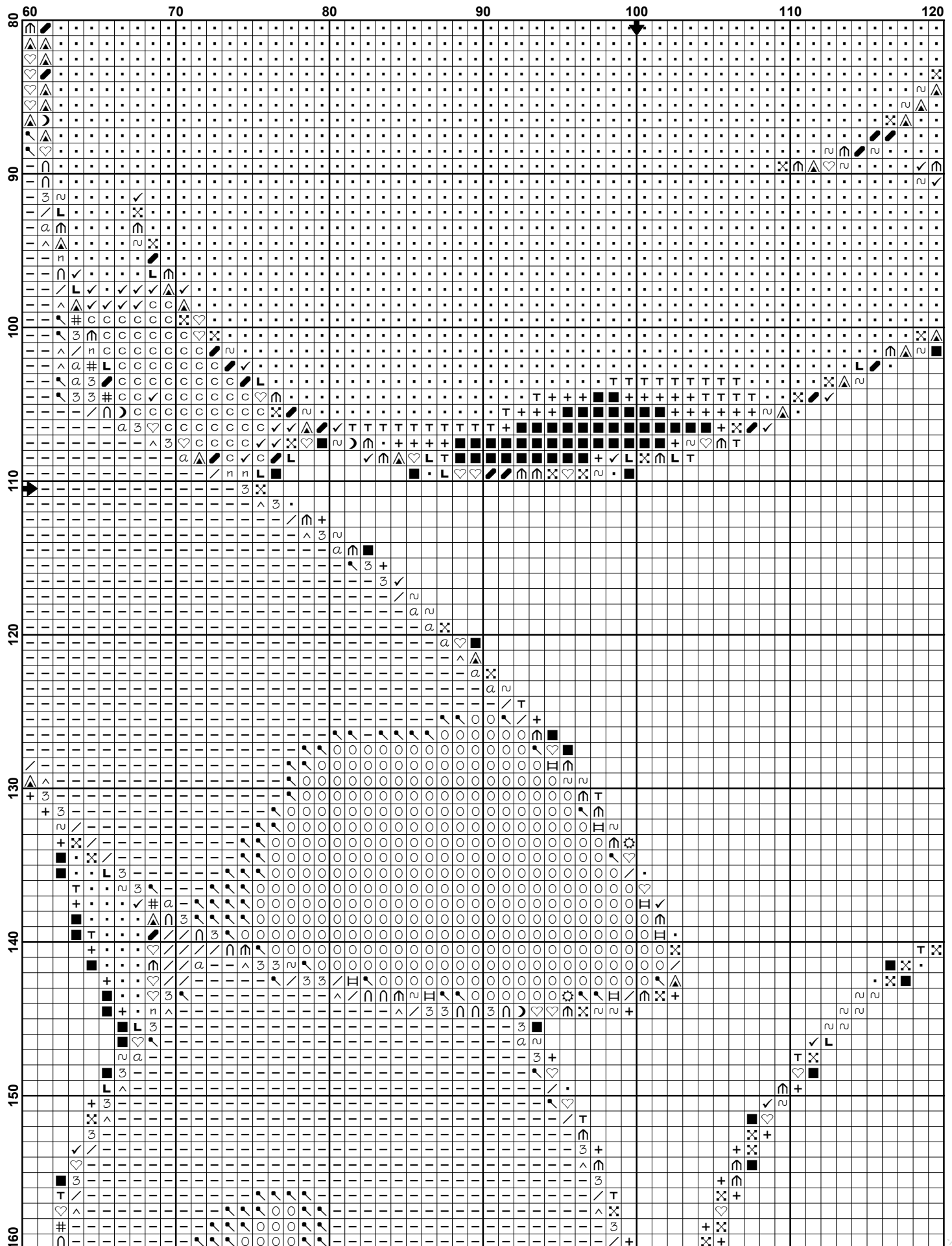


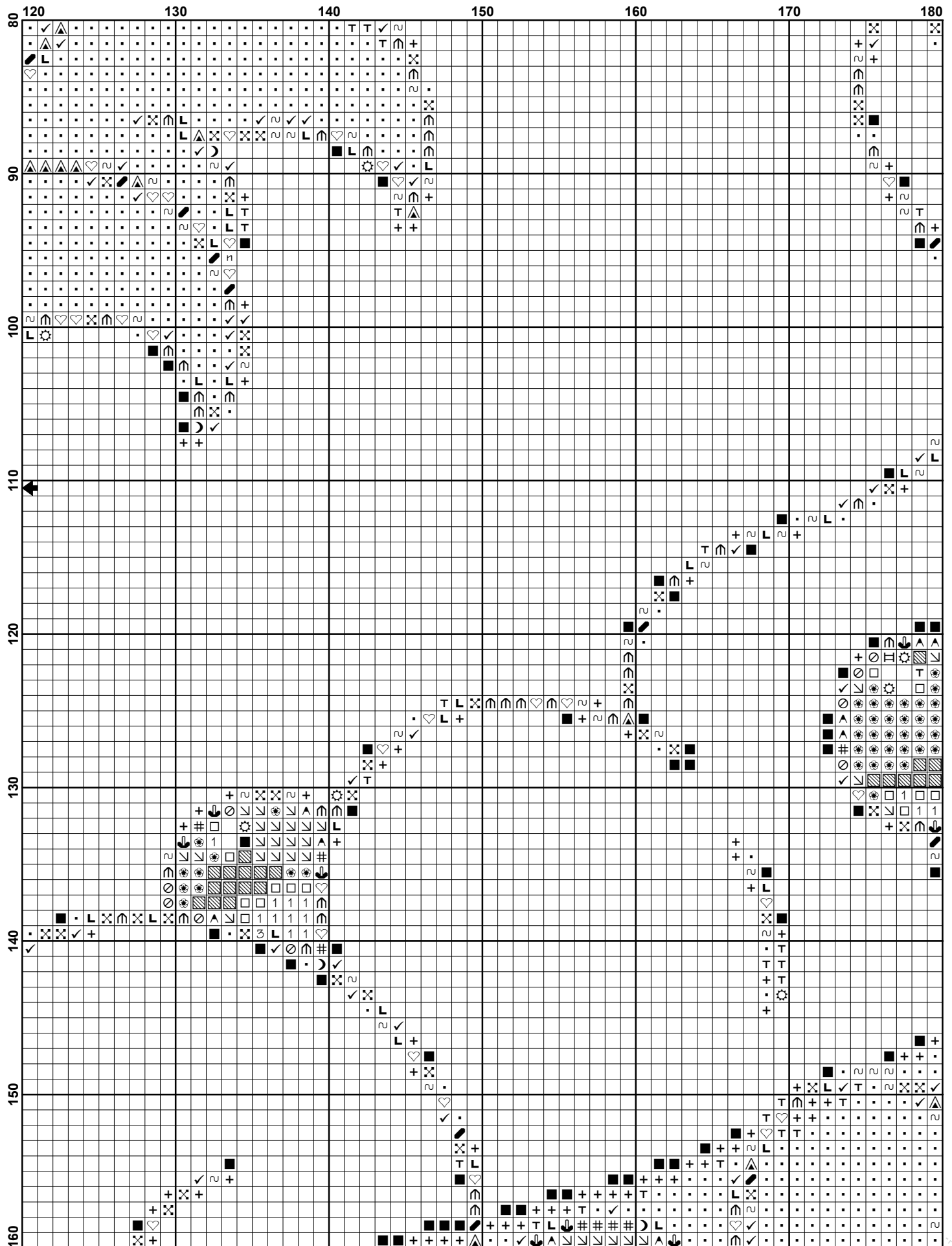


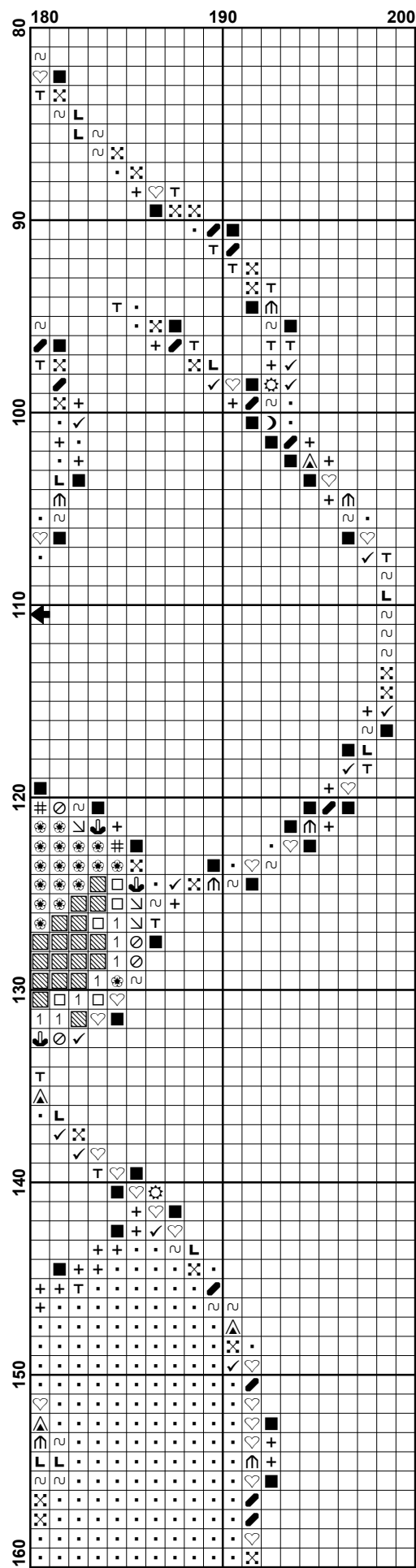


Ovi croSStitch









Ovi croSStitch

