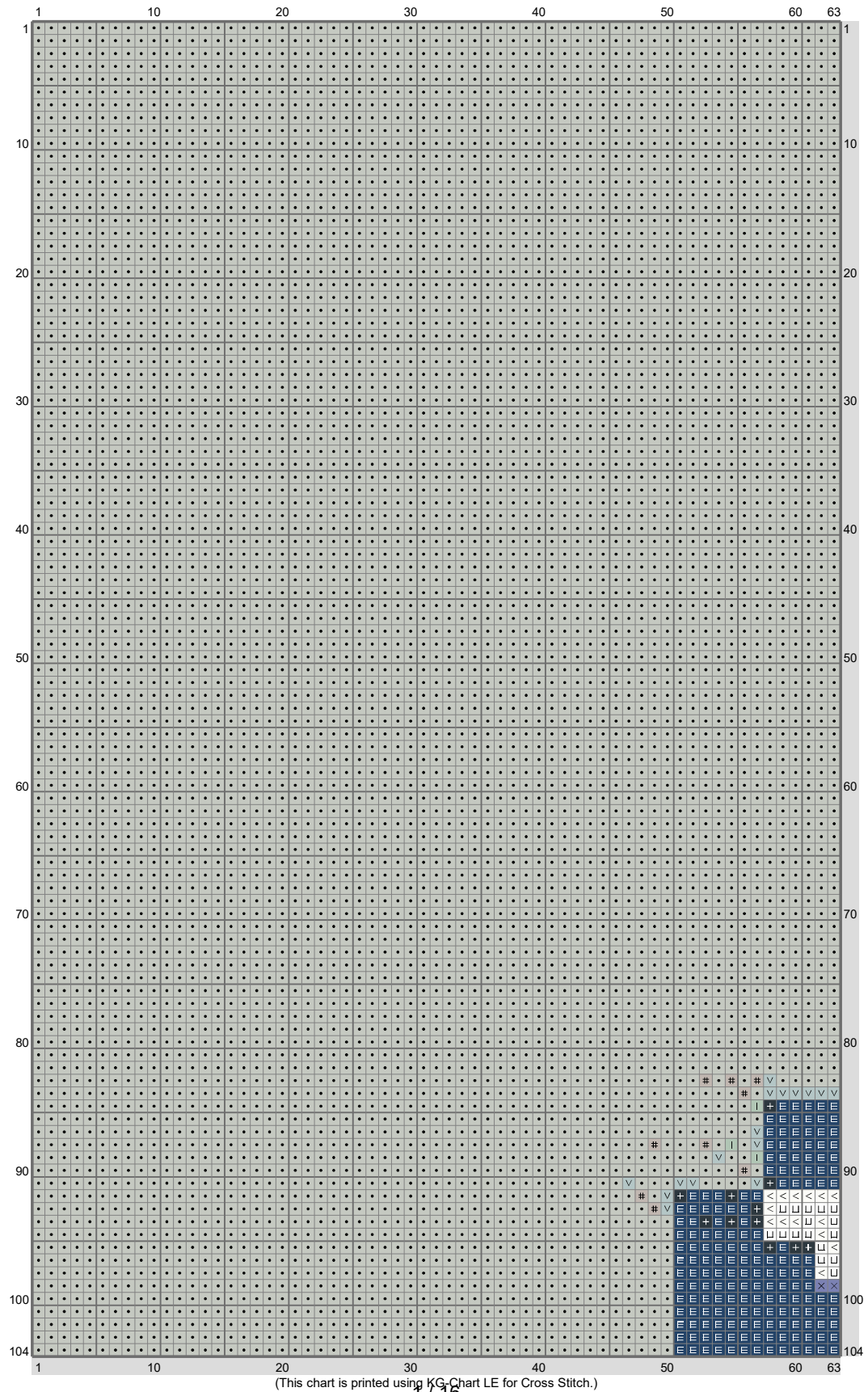
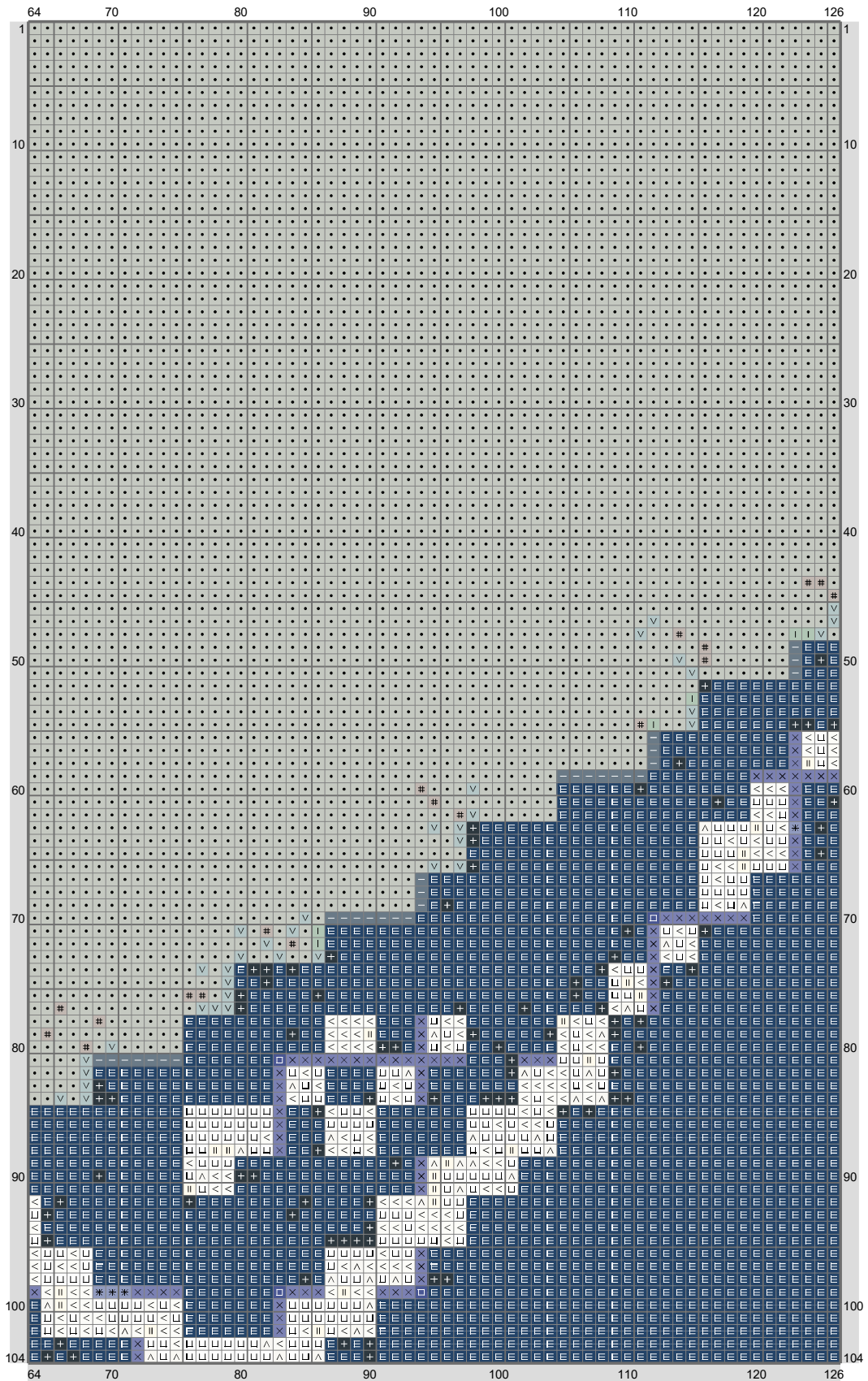


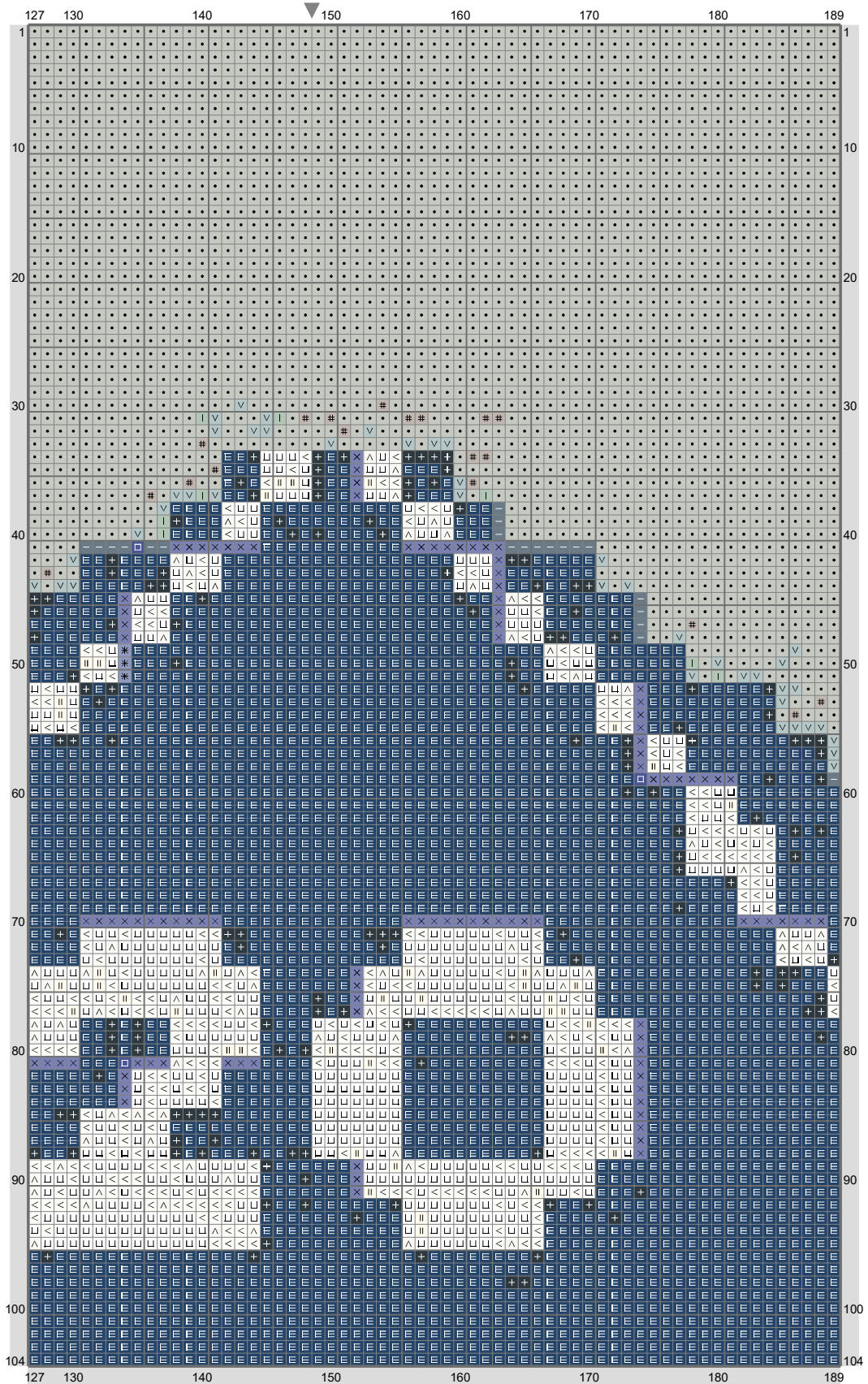
D20



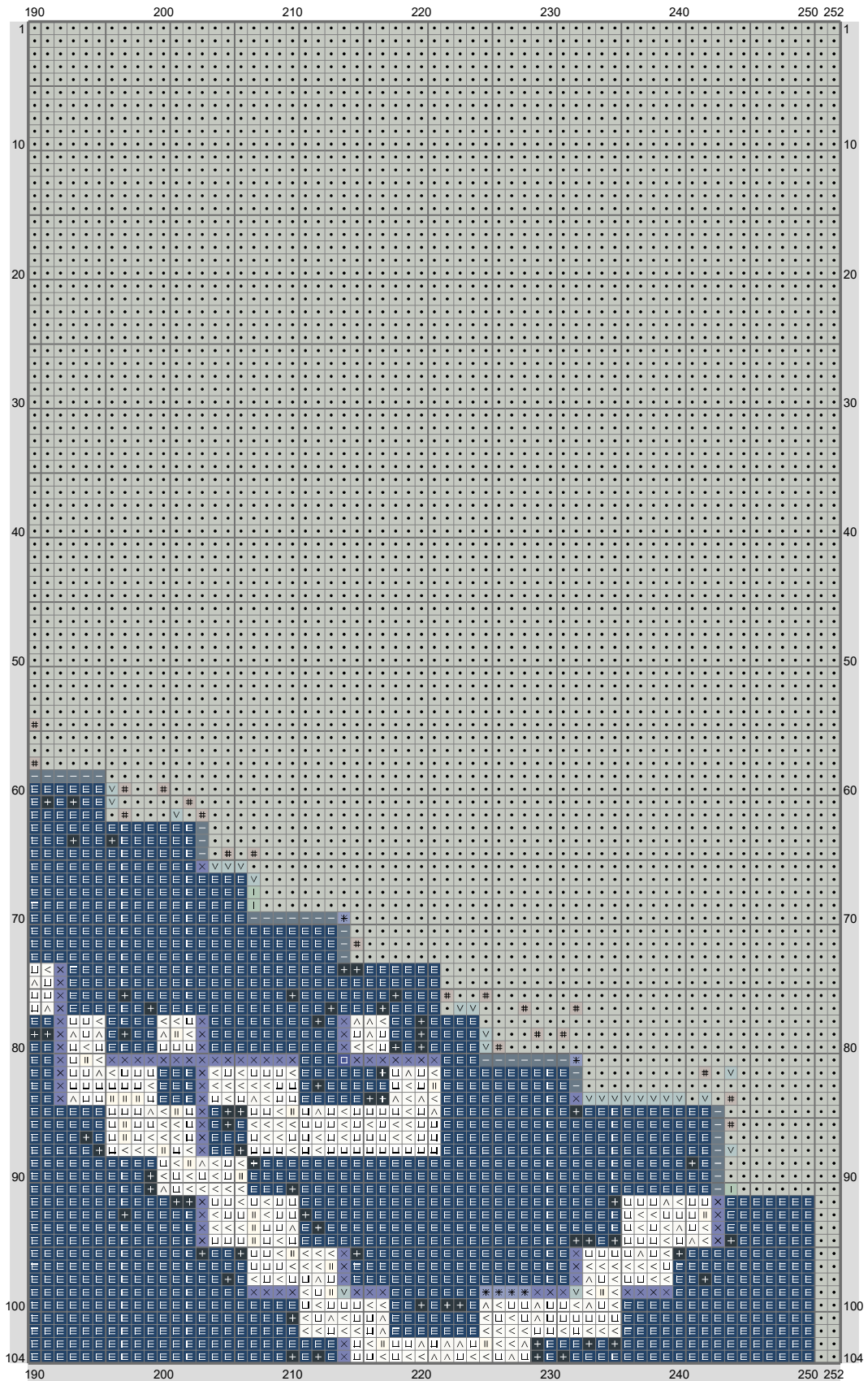
D20



D20

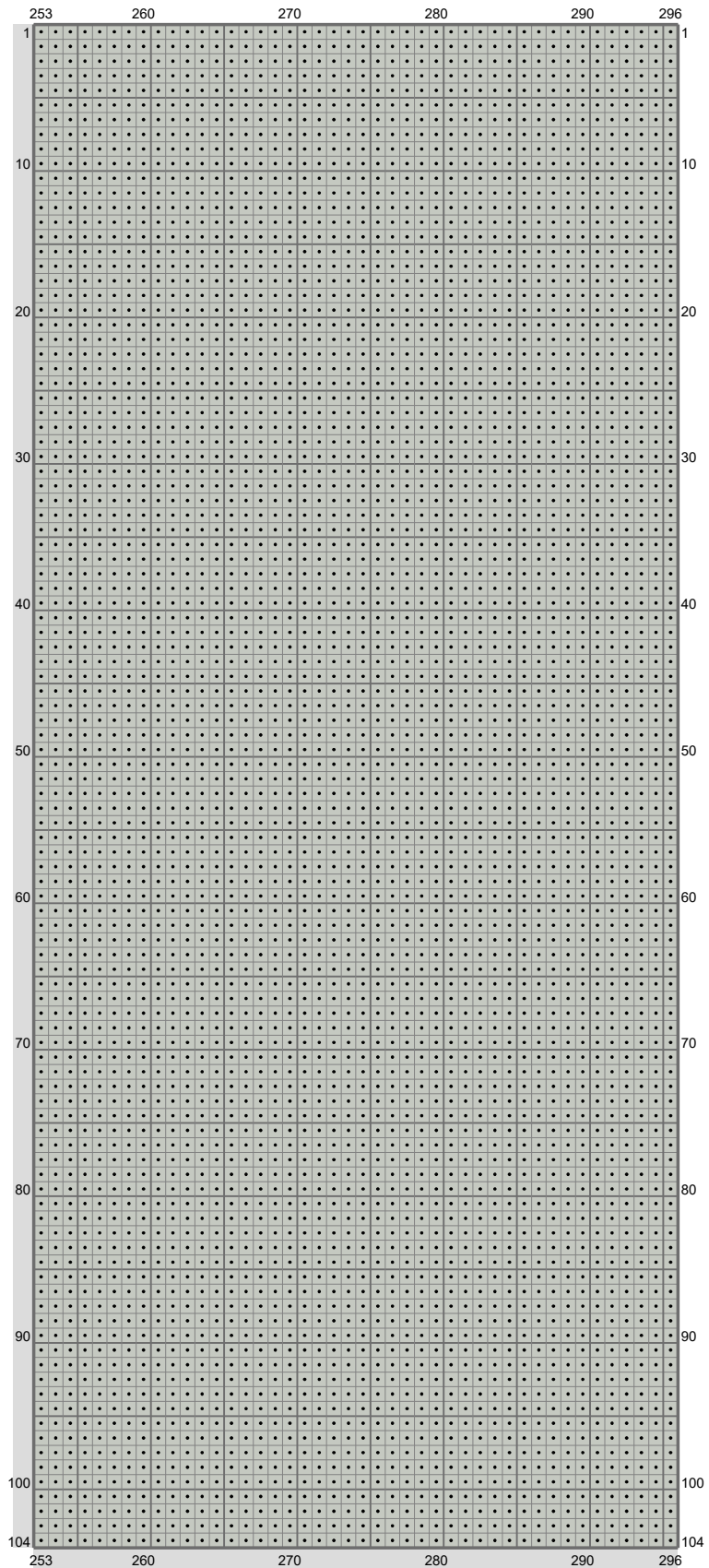


D20

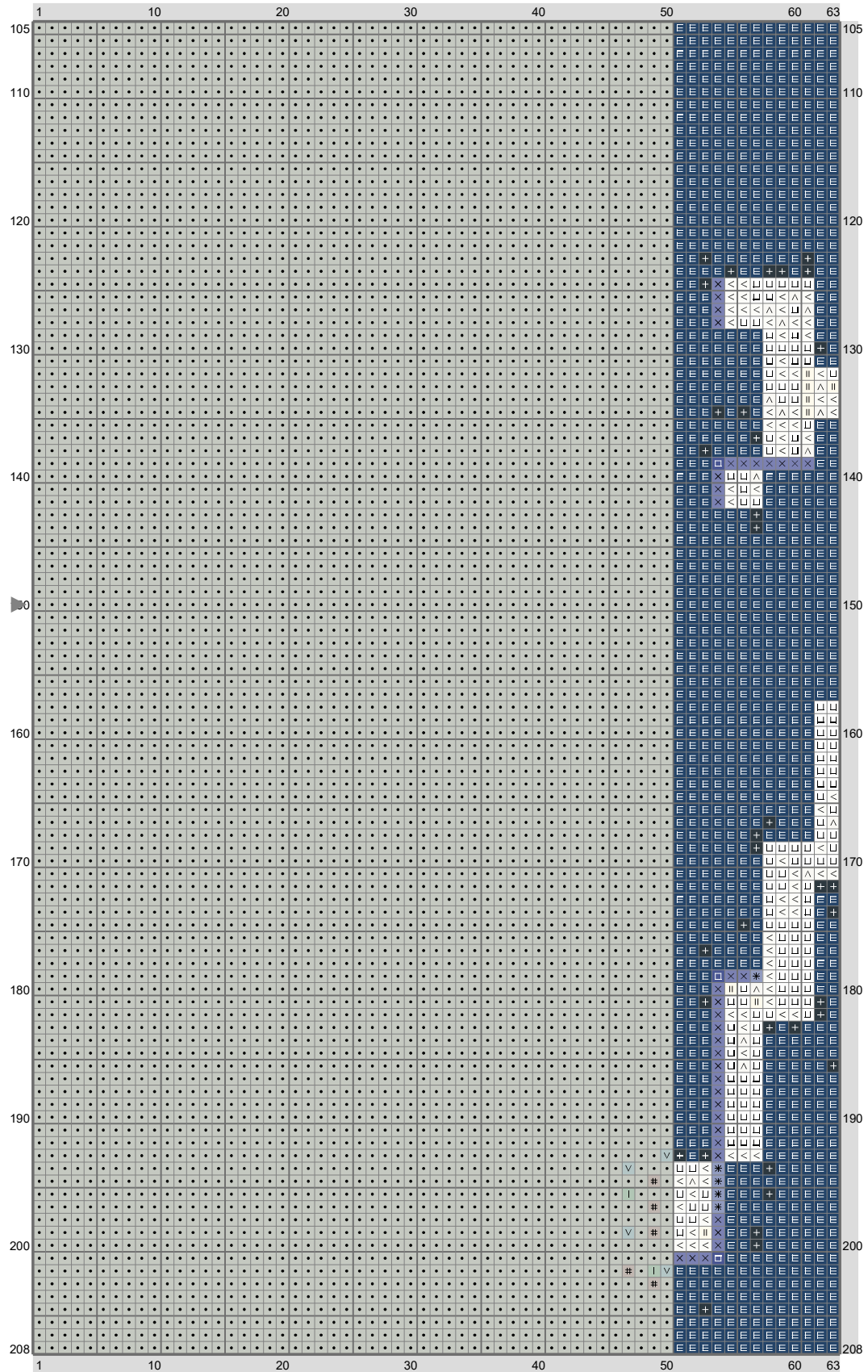


(This chart is printed using KG-Chart LE for Cross Stitch.)

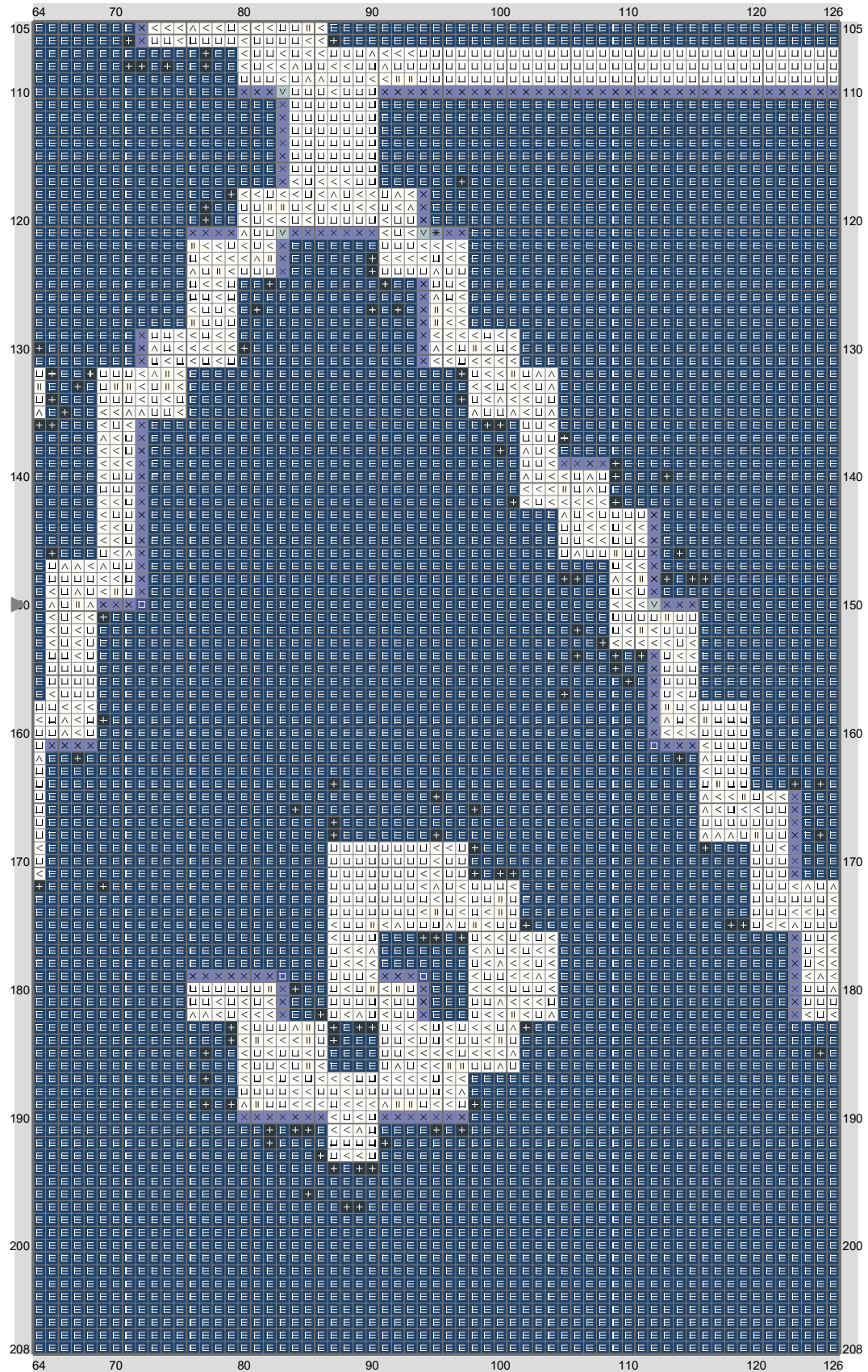
D20



D20

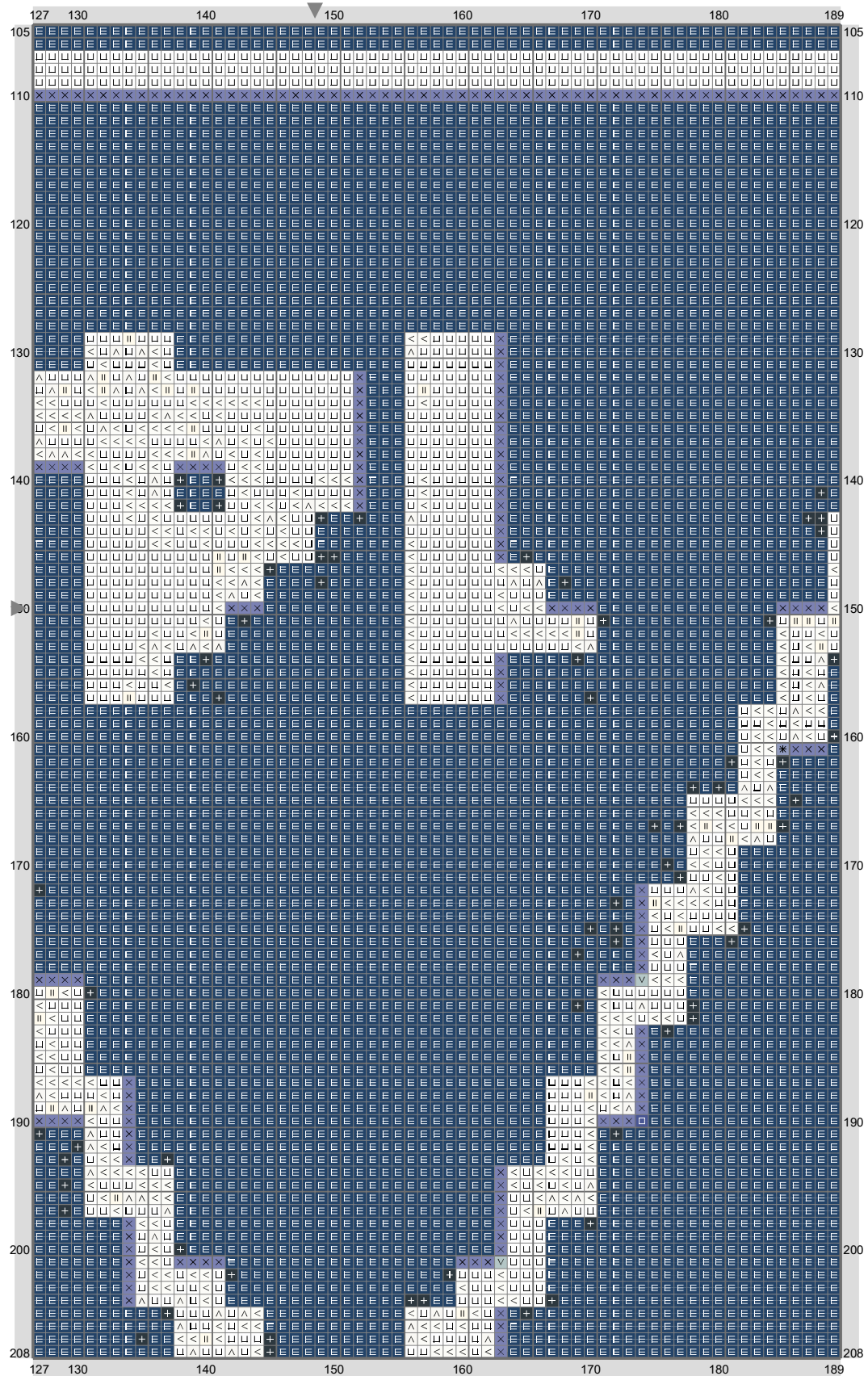


D20

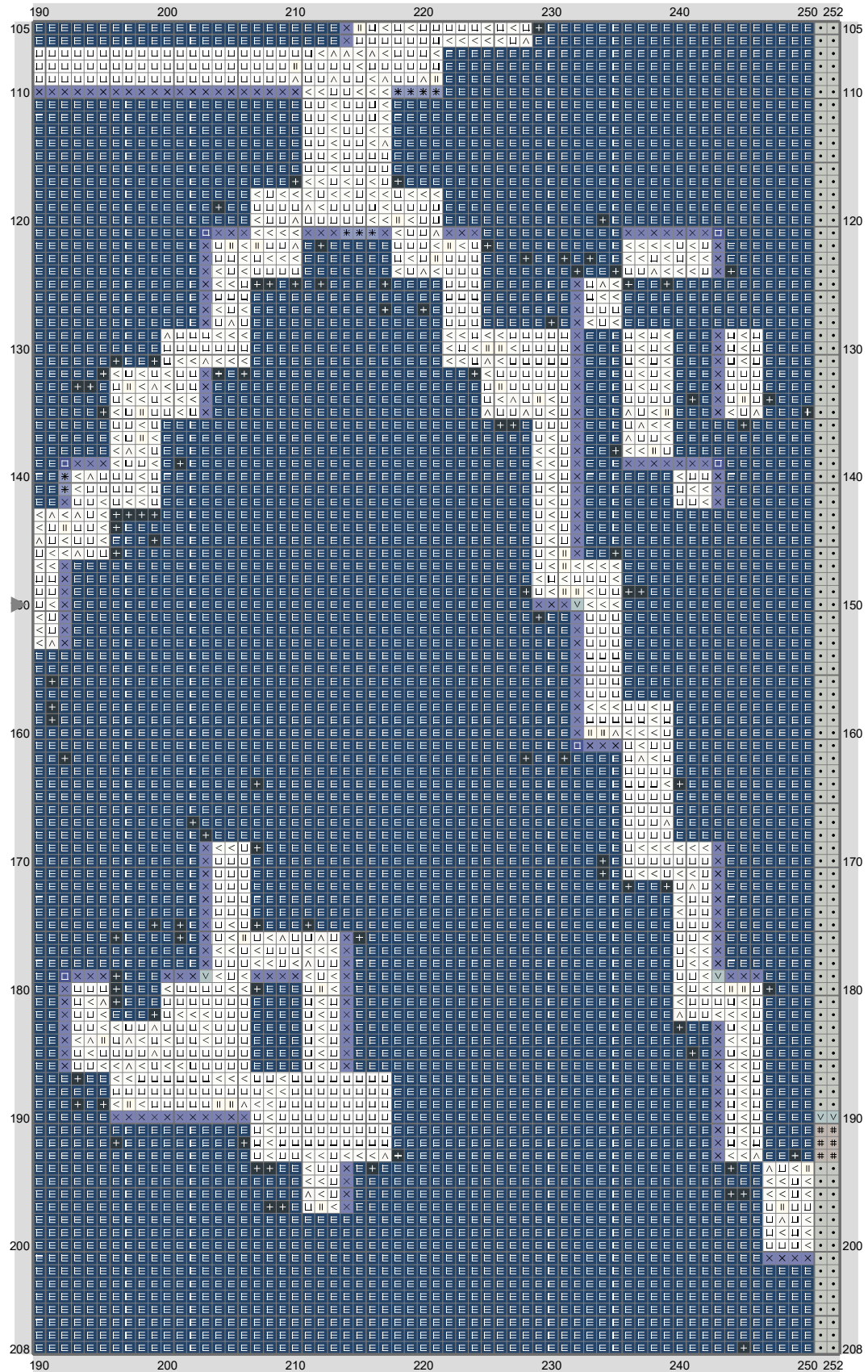


(This chart is printed using KG-Chart LE for Cross Stitch.)

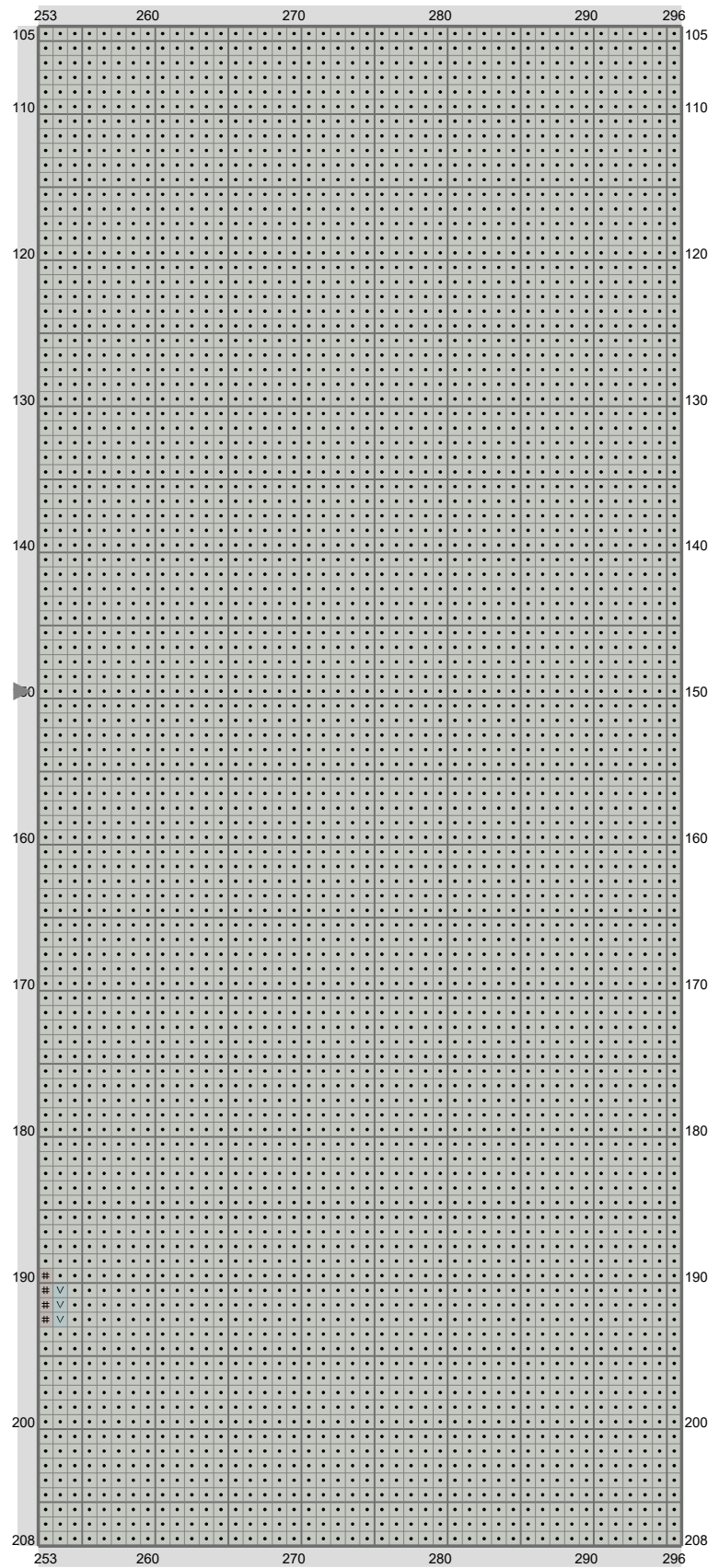
D20



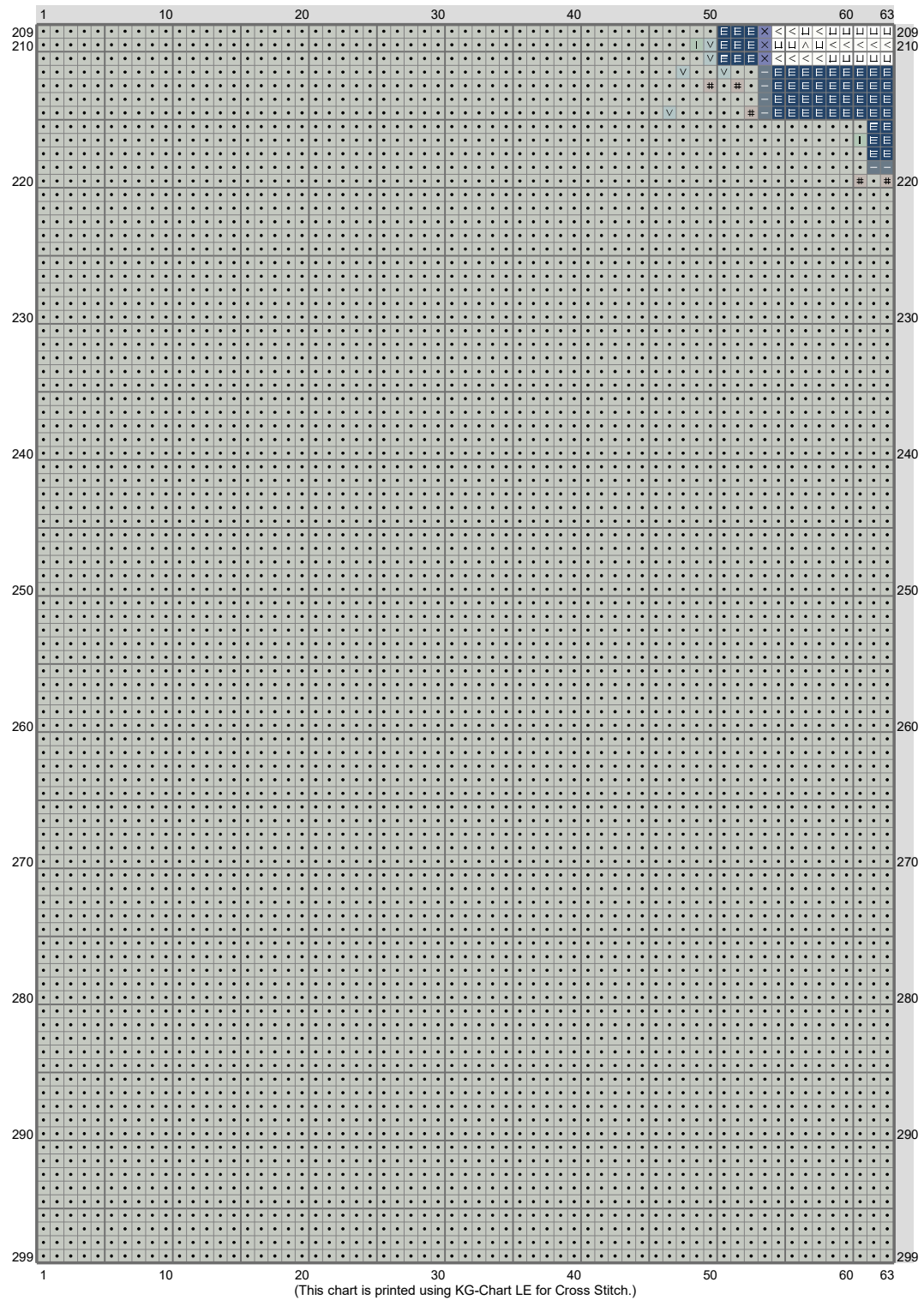
D20



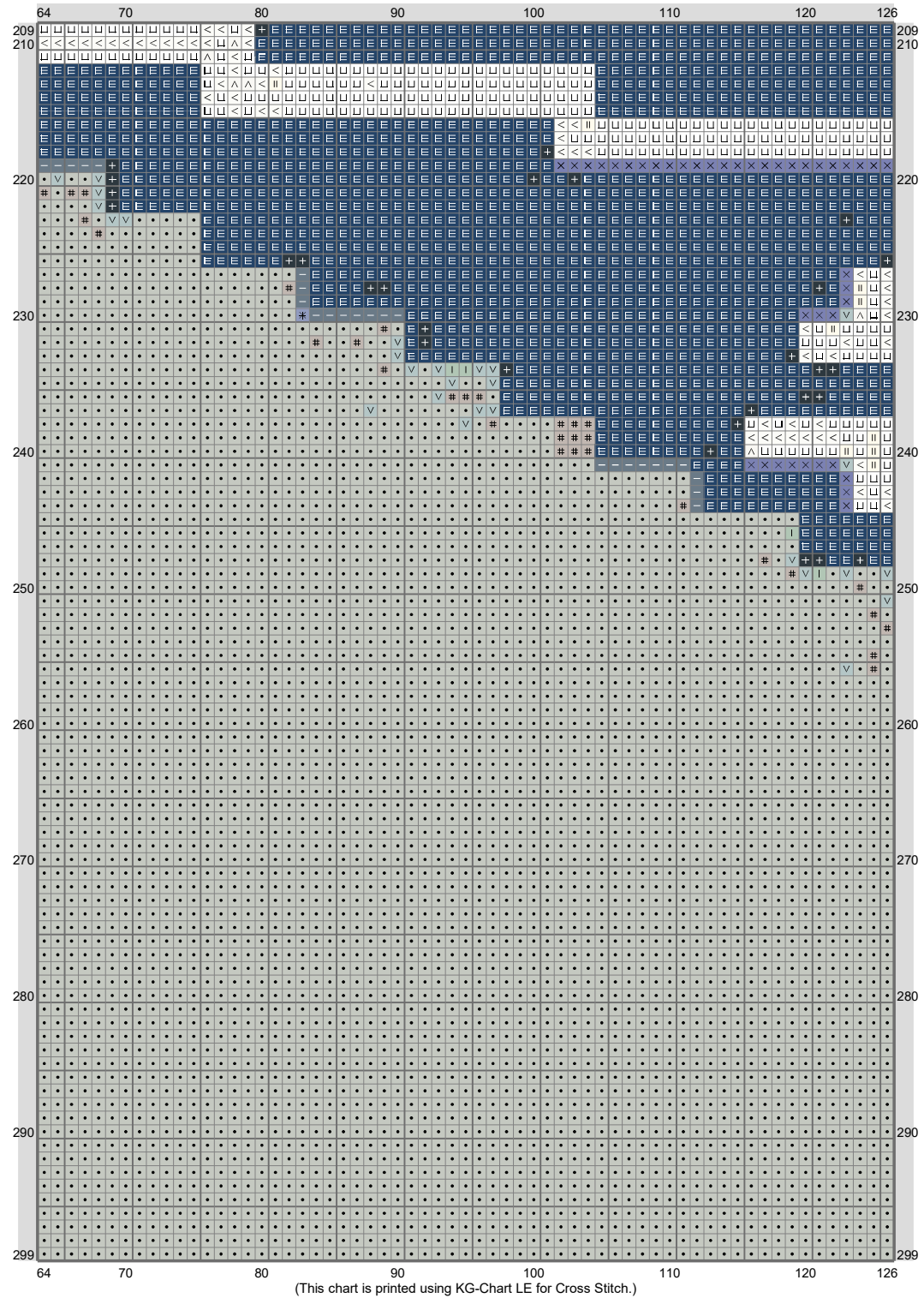
D20



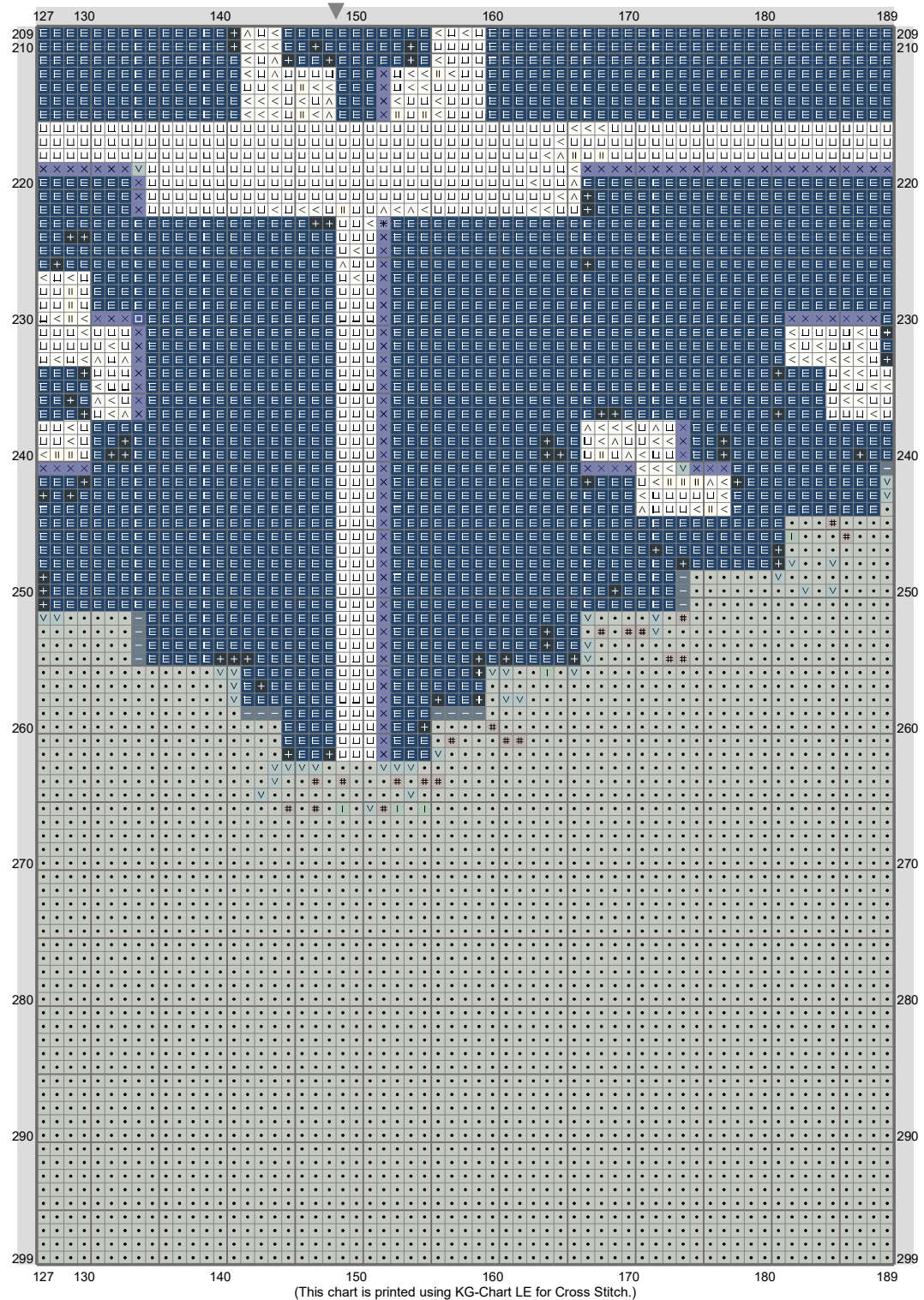
D20



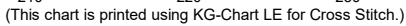
D20



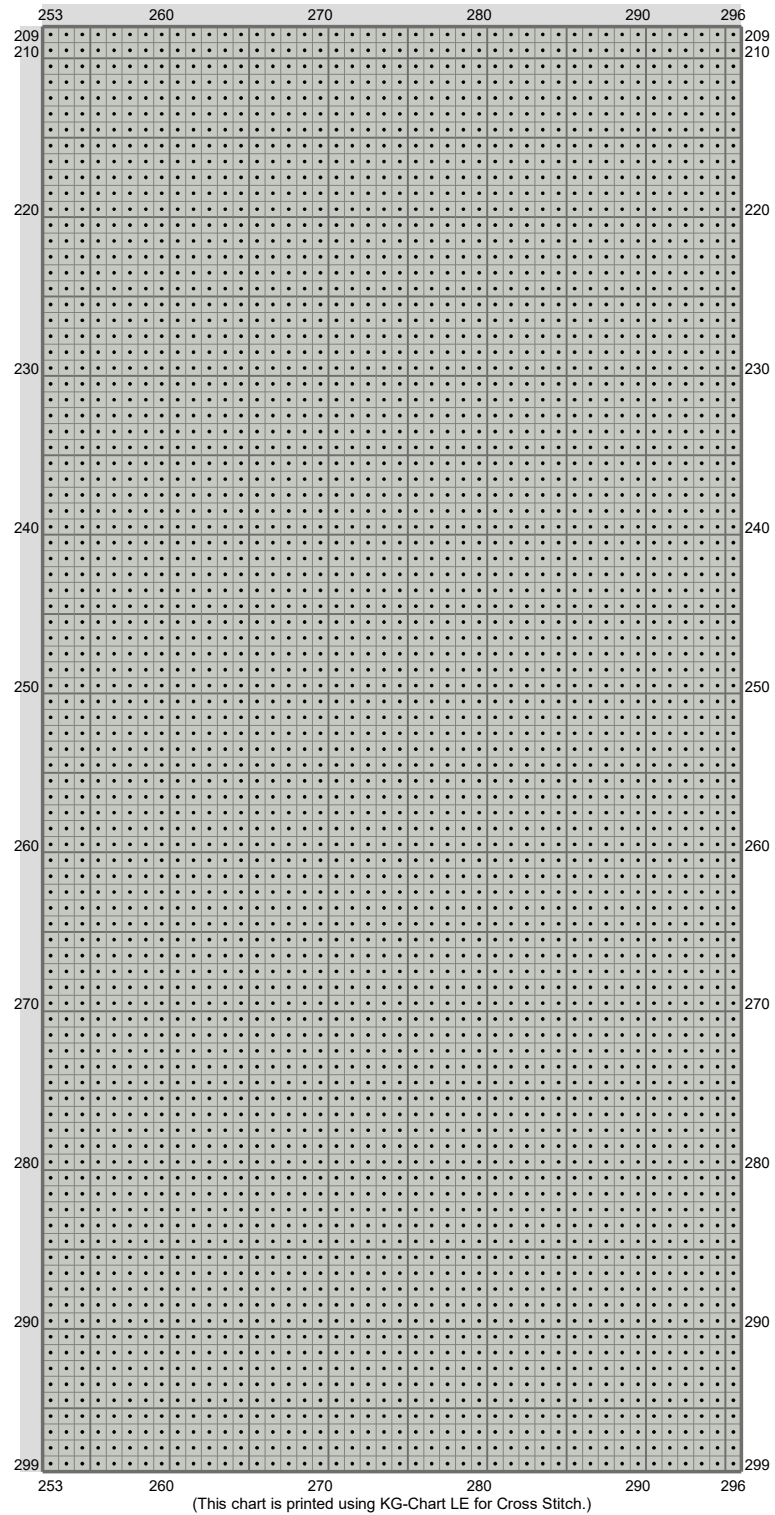
D20



D20



D20



D20

Stitch Count: 296w x 299h

Finished Size: 107.40 cm x 108.49 cm (14 ct./inch)















Cloth: Aida

Cloth's Color: White

of colors: 14 Colors

Color Table (DMC)

Cross Stitch

	500	(738 ct)
	3750	(26124 ct)
	312	(24 ct)
	3768	(158 ct)
	793	(1009 ct)
	794	(31 ct)
	3817	(35 ct)
	647	(156 ct)
	3023	(53180 ct)
	927	(242 ct)
	3865	(406 ct)
	712	(250 ct)
	BLANC	(1835 ct)
	B5200	(4316 ct)