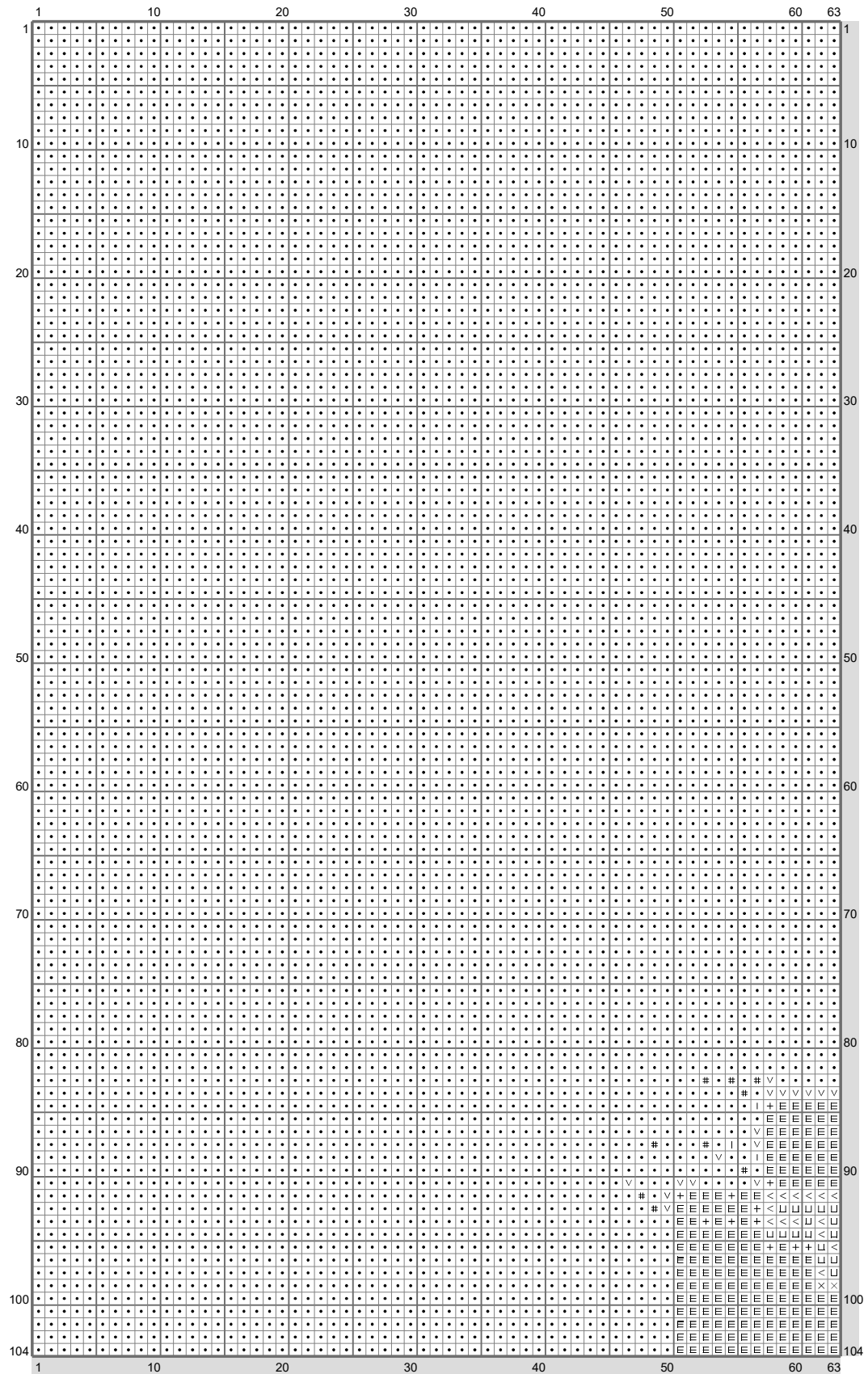
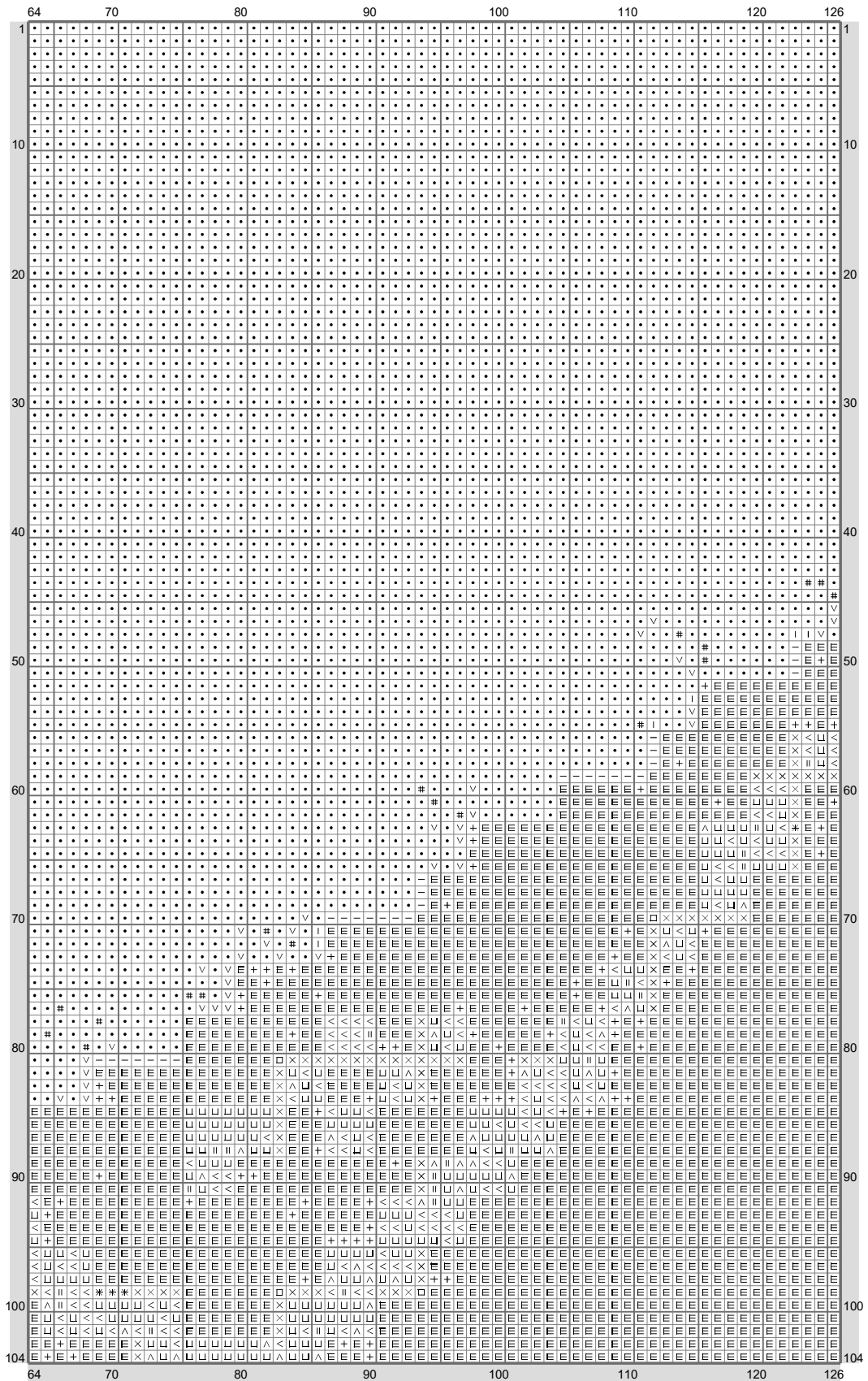


D20

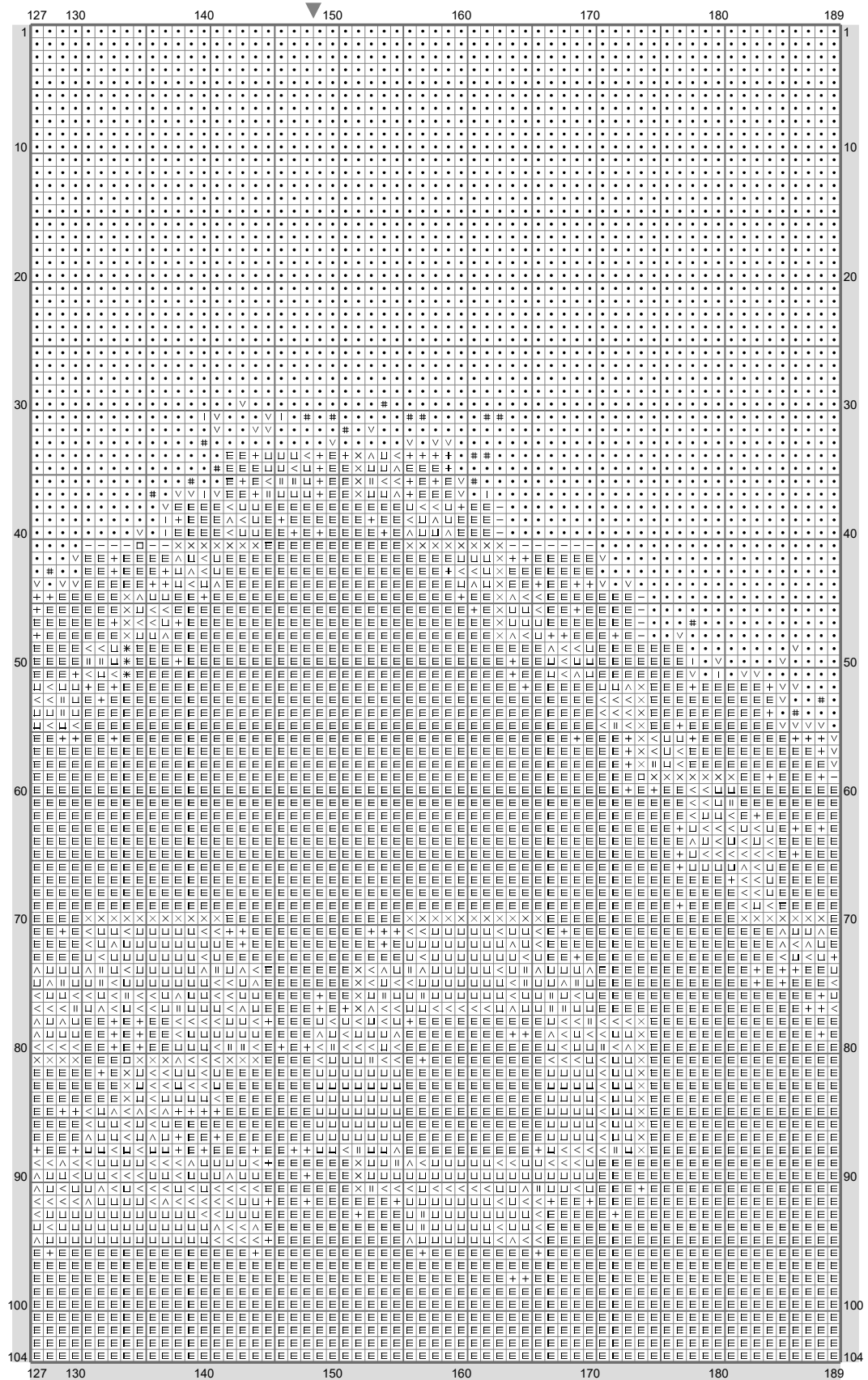


(This chart is printed using KG-Chart LE for Cross Stitch.)

D20

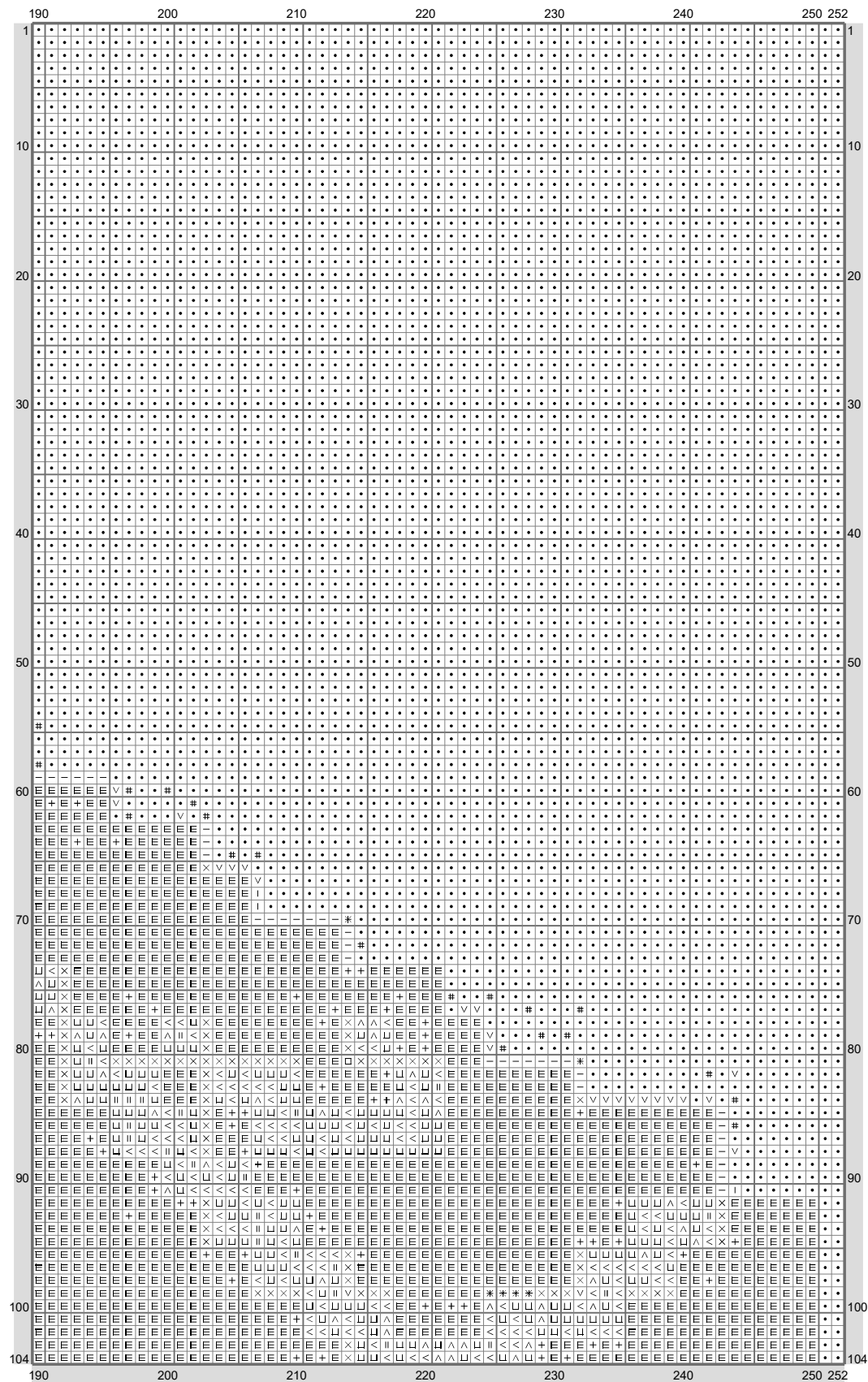


D20



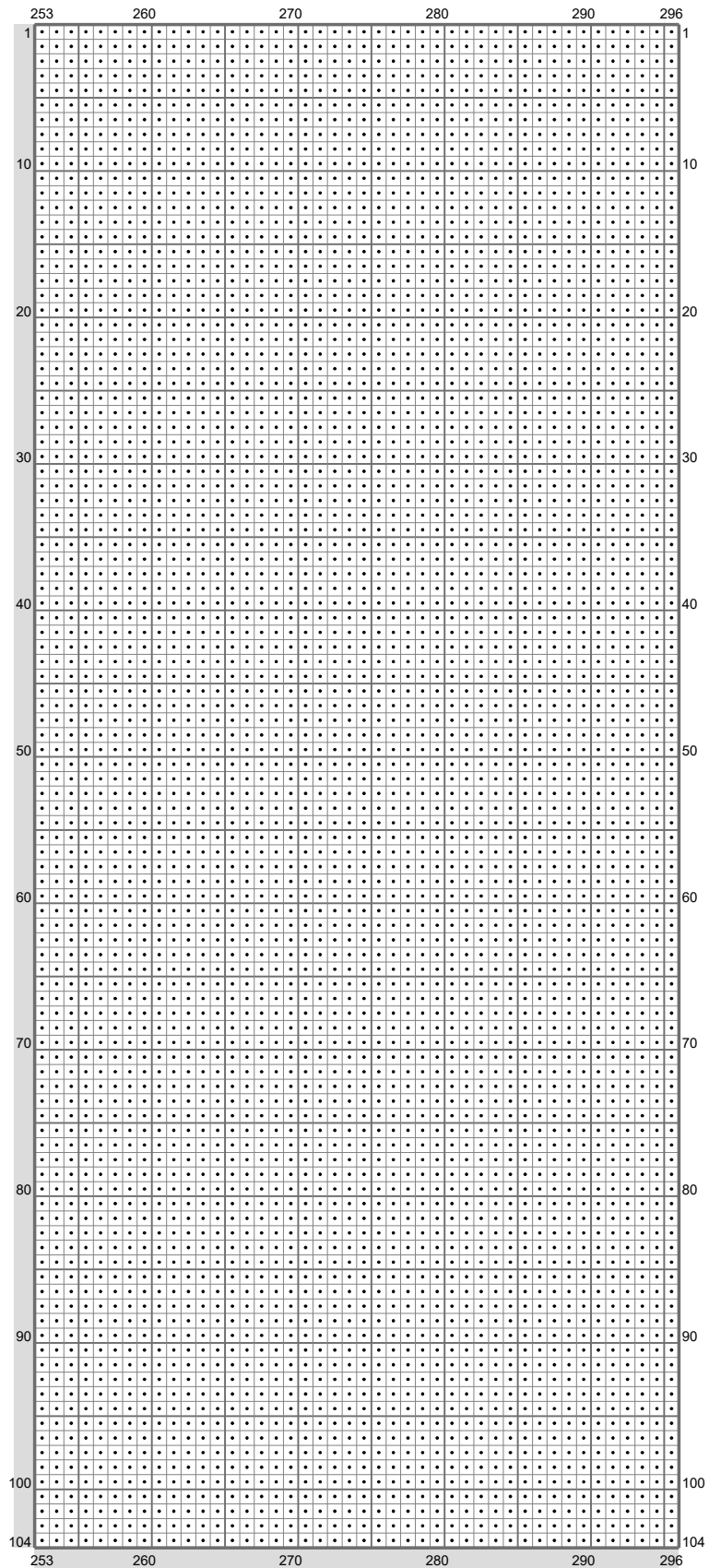
(This chart is printed using KG-Chart LE for Cross Stitch.)

D20



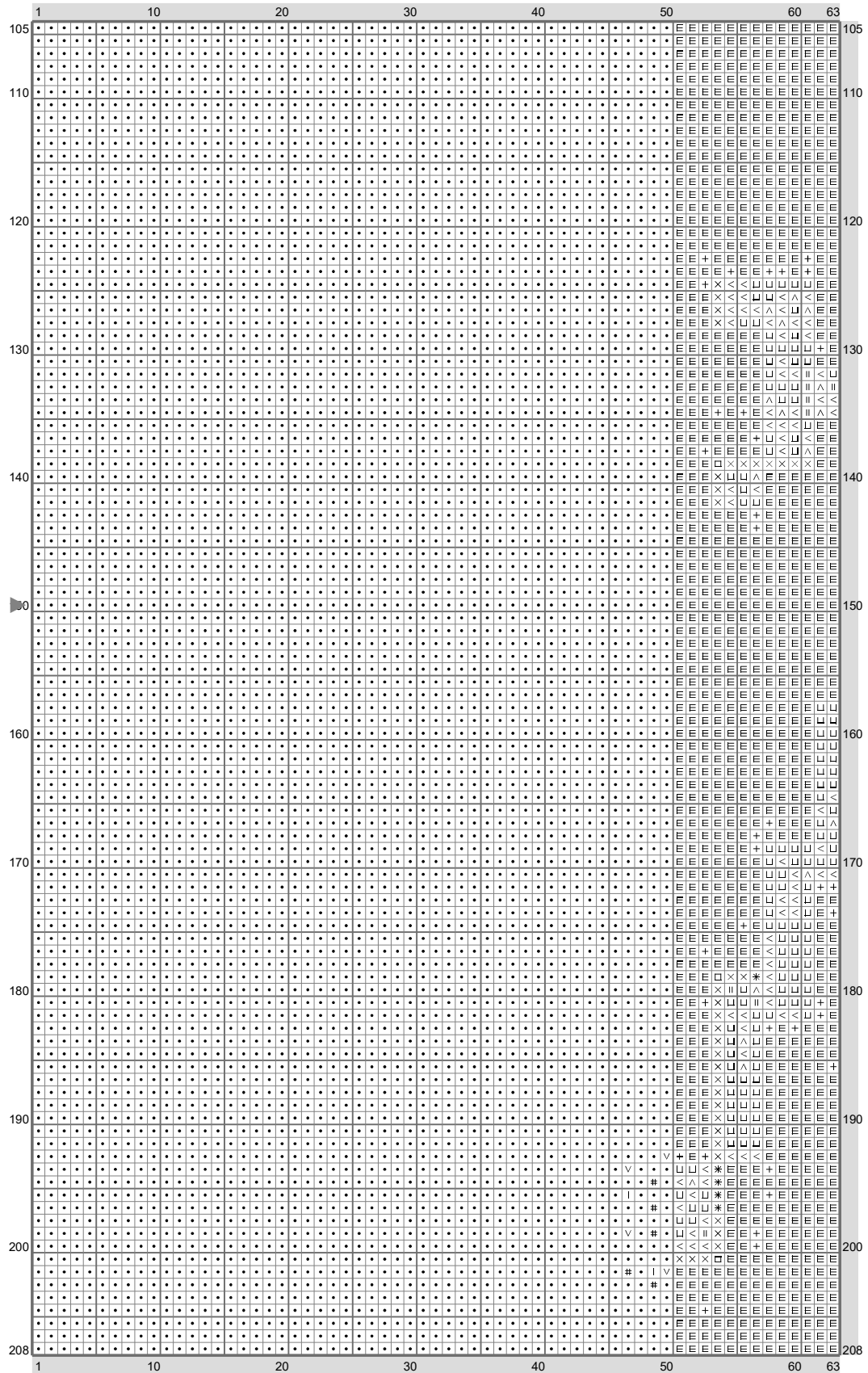
(This chart is printed using KG-Chart LE for Cross Stitch.)

D20



(This chart is printed using KG-Chart LE for Cross Stitch.)

D20

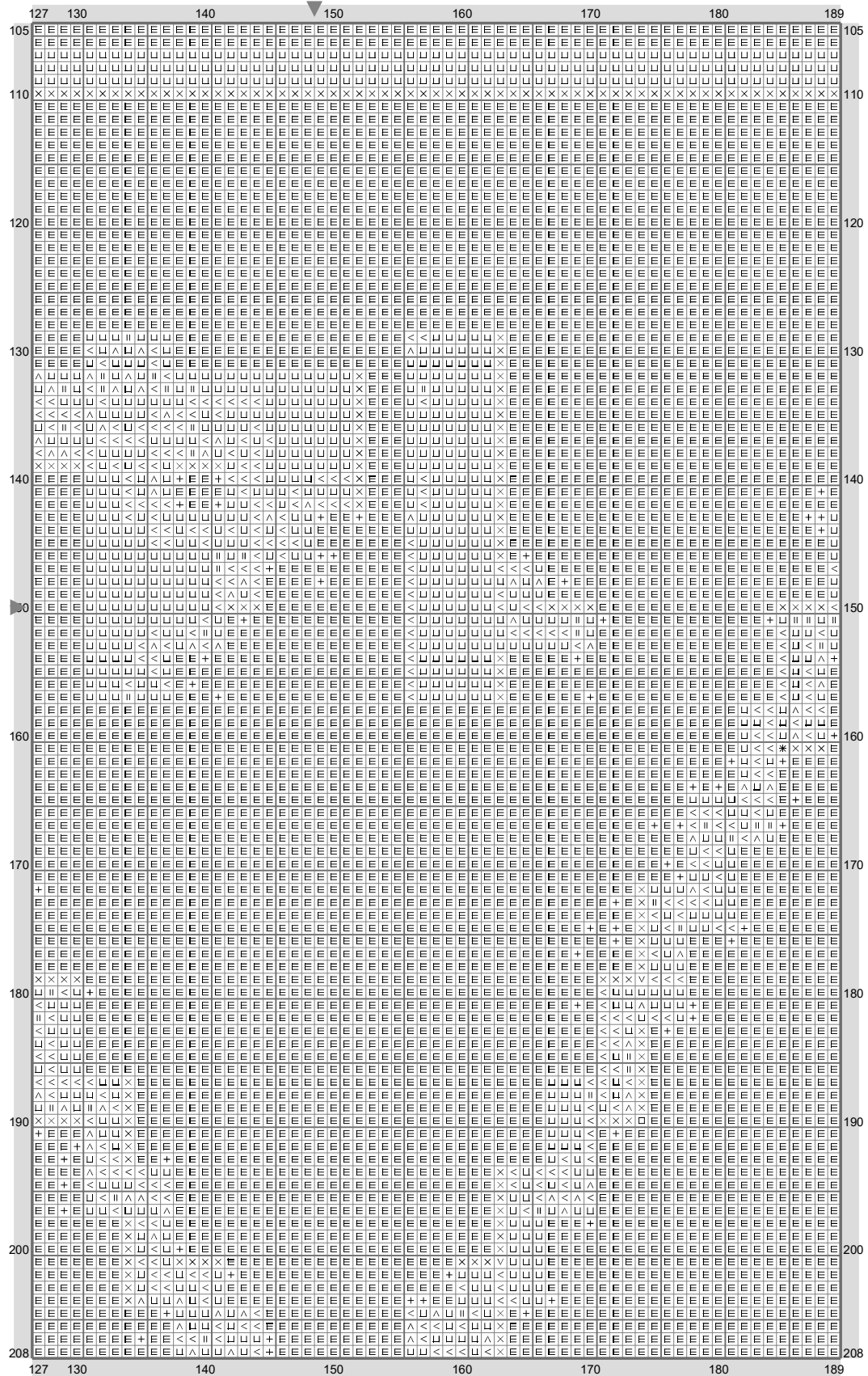


D20

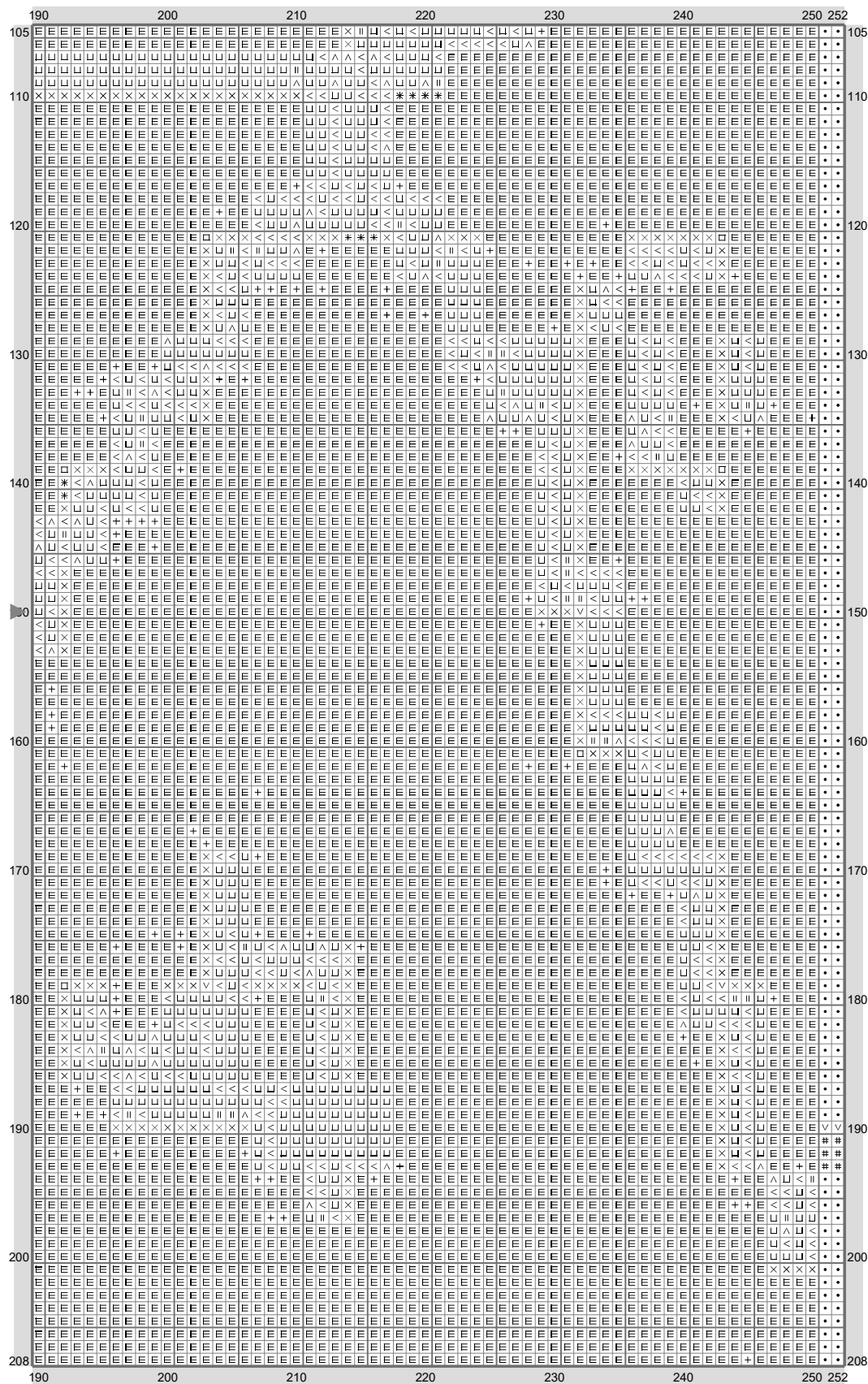
	64	70	80	90	100	110	120	126	
105	E	E	E	E	E	E	E	E	105
110	E	E	E	E	E	E	E	E	110
120	E	E	E	E	E	E	E	E	120
130	E	E	E	E	E	E	E	E	130
140	E	E	E	E	E	E	E	E	140
150	E	E	E	E	E	E	E	E	150
160	E	E	E	E	E	E	E	E	160
170	E	E	E	E	E	E	E	E	170
180	E	E	E	E	E	E	E	E	180
190	E	E	E	E	E	E	E	E	190
200	E	E	E	E	E	E	E	E	200
208	E	E	E	E	E	E	E	E	208

(This chart is printed using KG-Chart LE for Cross Stitch.)

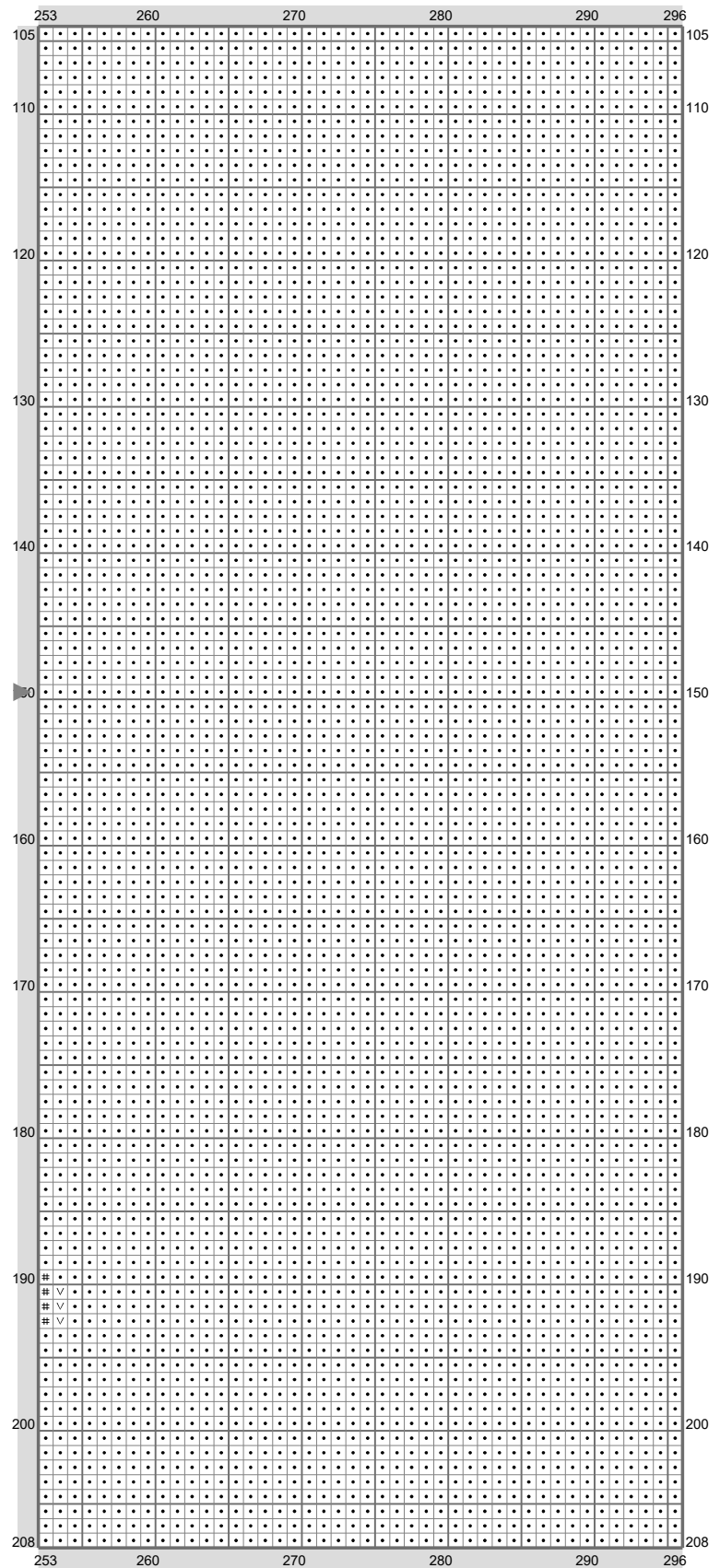
D20



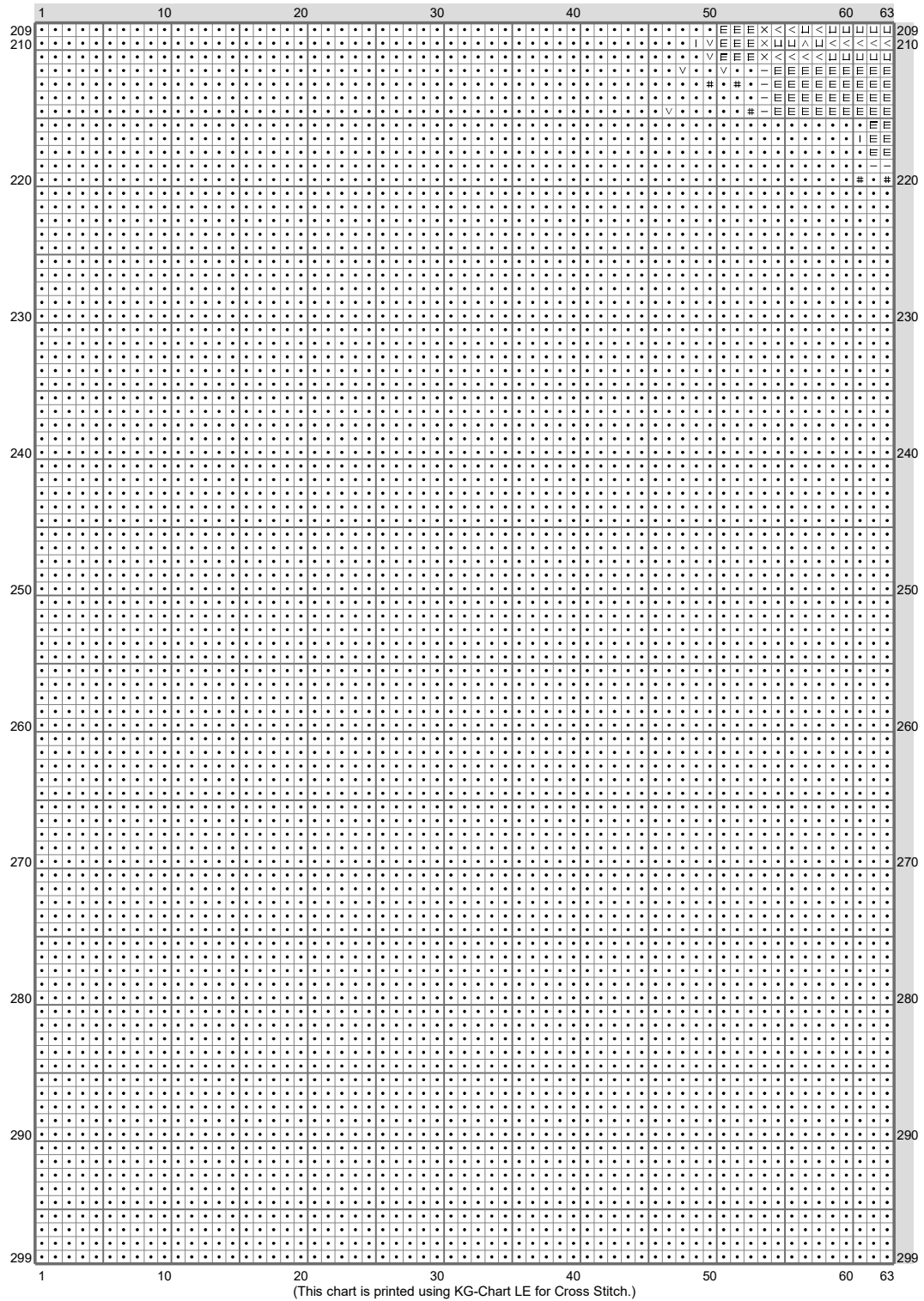
D20



D20



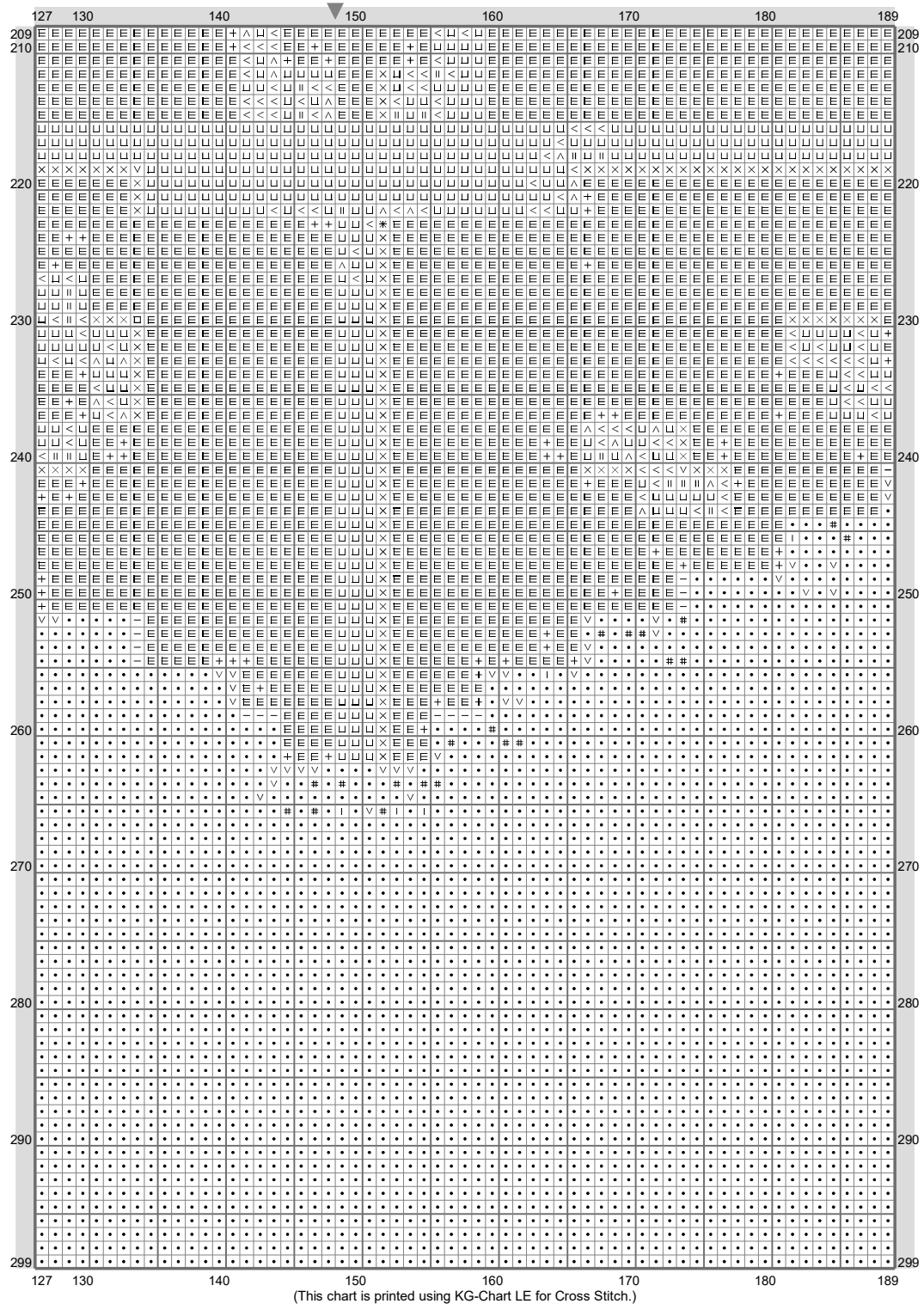
D20



D20



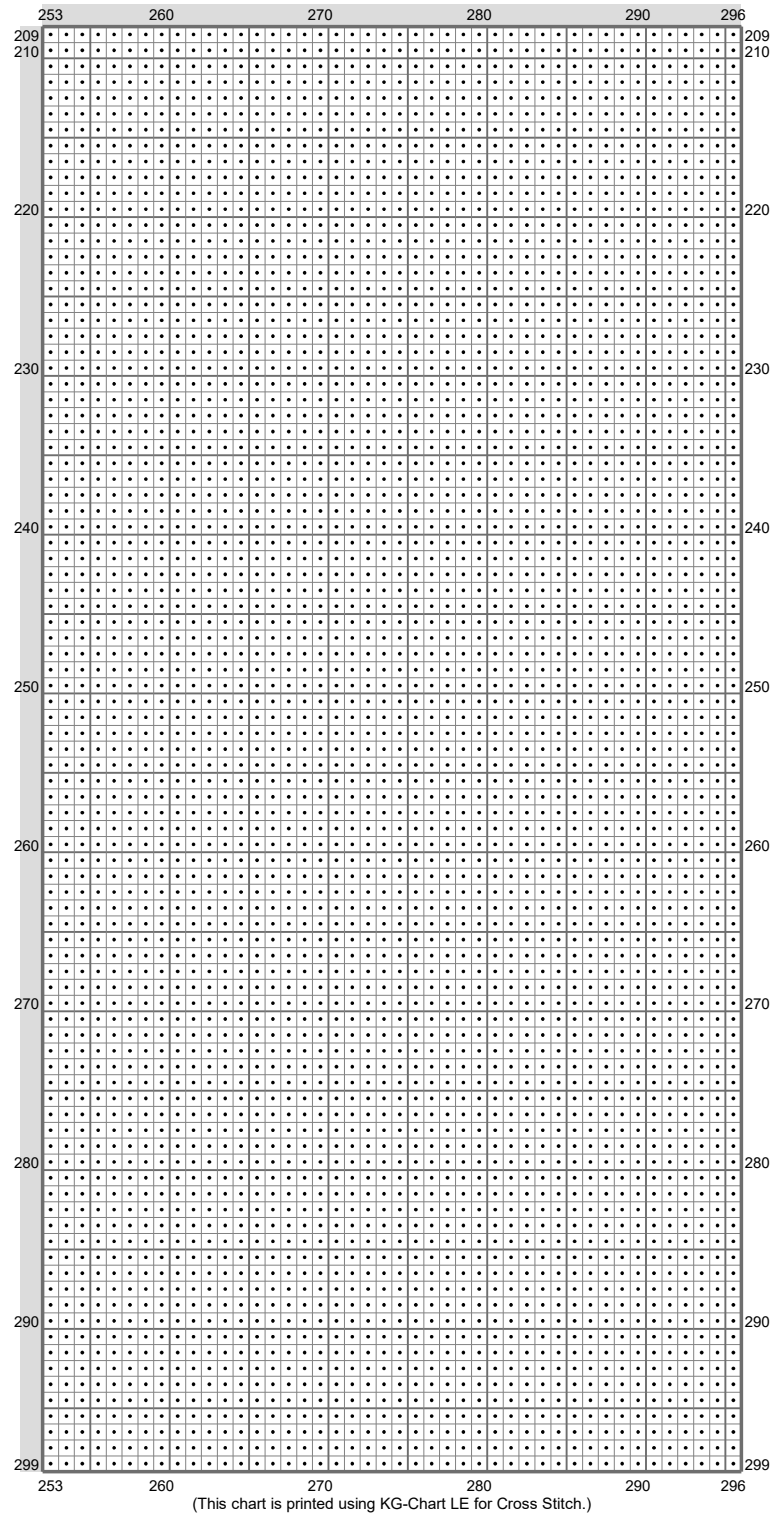
D20



D20



D20



D20

Stitch Count: 296w x 299h

Finished Size: 107.40 cm x 108.49 cm (14 ct./inch)






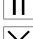



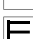




Cloth: Aida

Cloth's Color: White

of colors: 14 Colors

Color Table (DMC)

Cross Stitch

	B5200	(4316 ct)
	BLANC	(1835 ct)
	312	(24 ct)
	500	(738 ct)
	647	(156 ct)
	712	(250 ct)
	793	(1009 ct)
	794	(31 ct)
	927	(242 ct)
	3023	(53180 ct)
	3750	(26124 ct)
	3768	(158 ct)
	3817	(35 ct)
	3865	(406 ct)