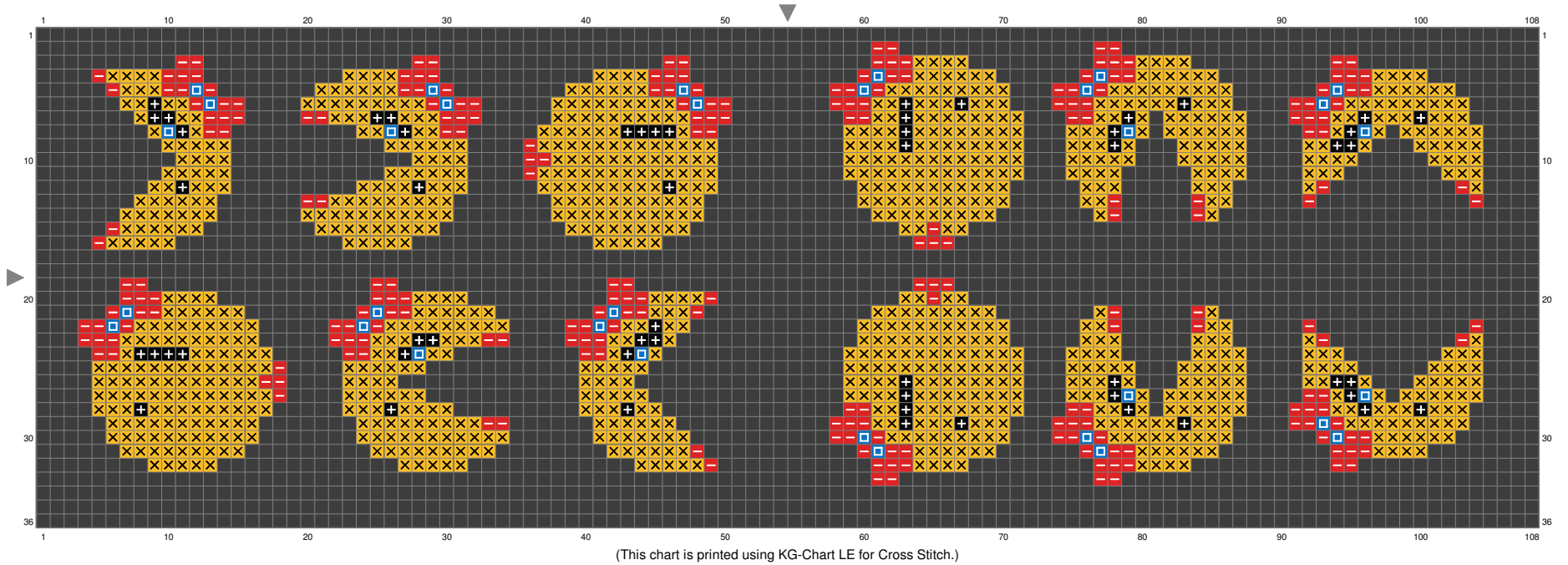


Ms. Pac-Man



Ms. Pac-Man

Stitch Count:108w x 36h





Cloth:Aida Cloth's Color:Black

Finished Size:39.18 cm x 13.06 cm (14 ct./inch)

Total 4 Colors

Color Table (DMC)

Cross Stitch

	3843	(32 ct)
	349	(240 ct)
	972	(1068 ct)
	310	(56 ct)