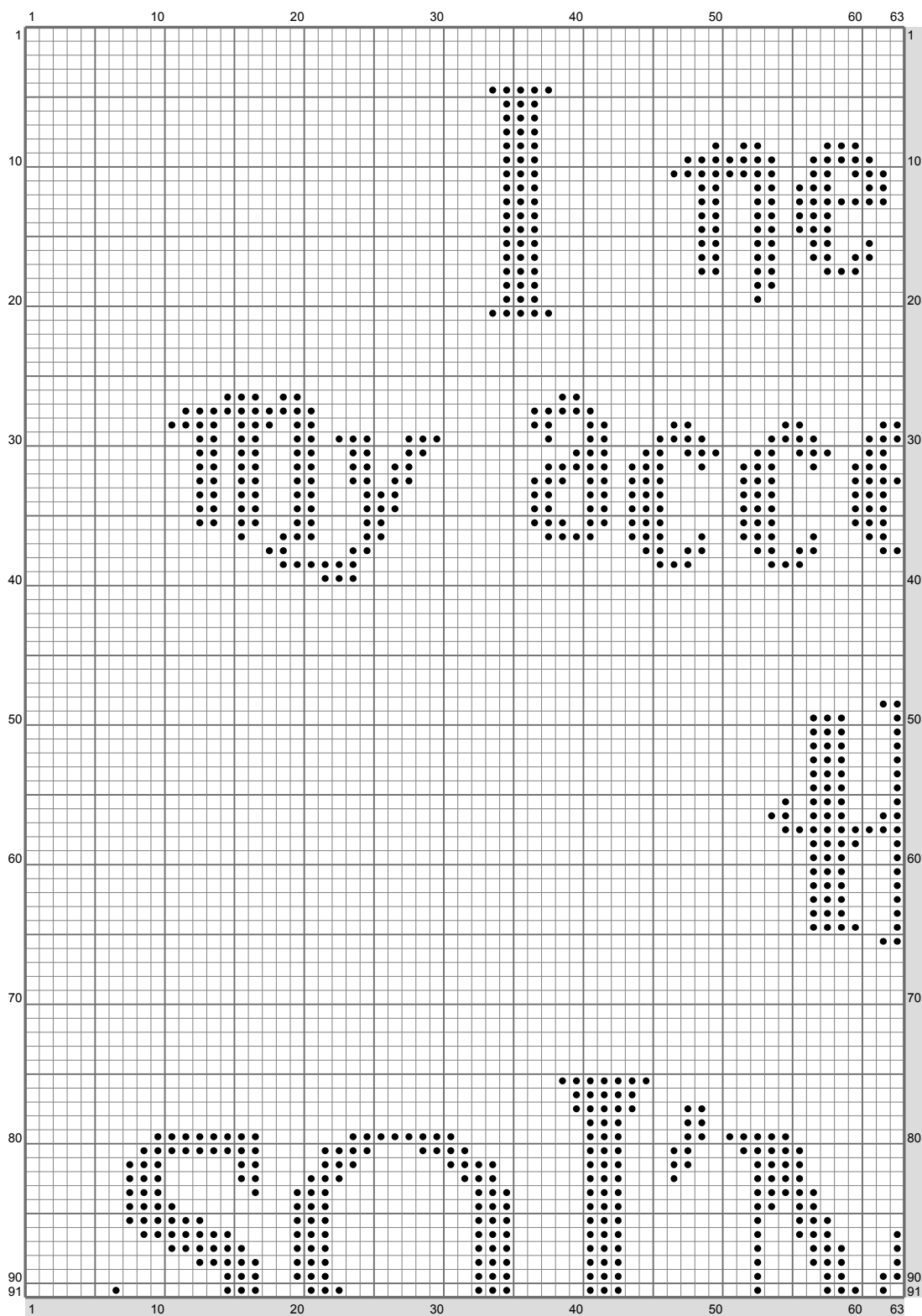
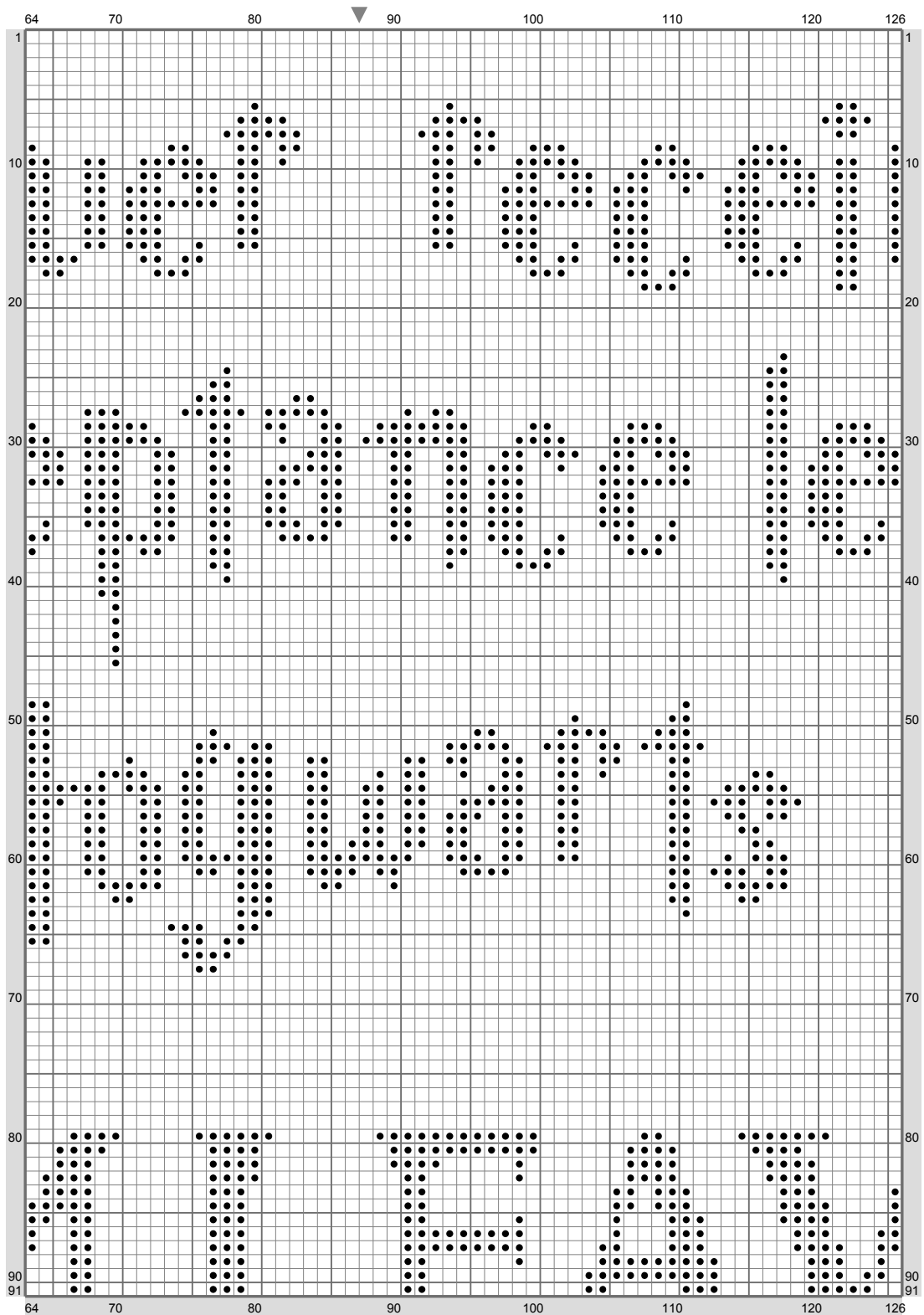


Hogwarts, Shire, Jedi + GoT



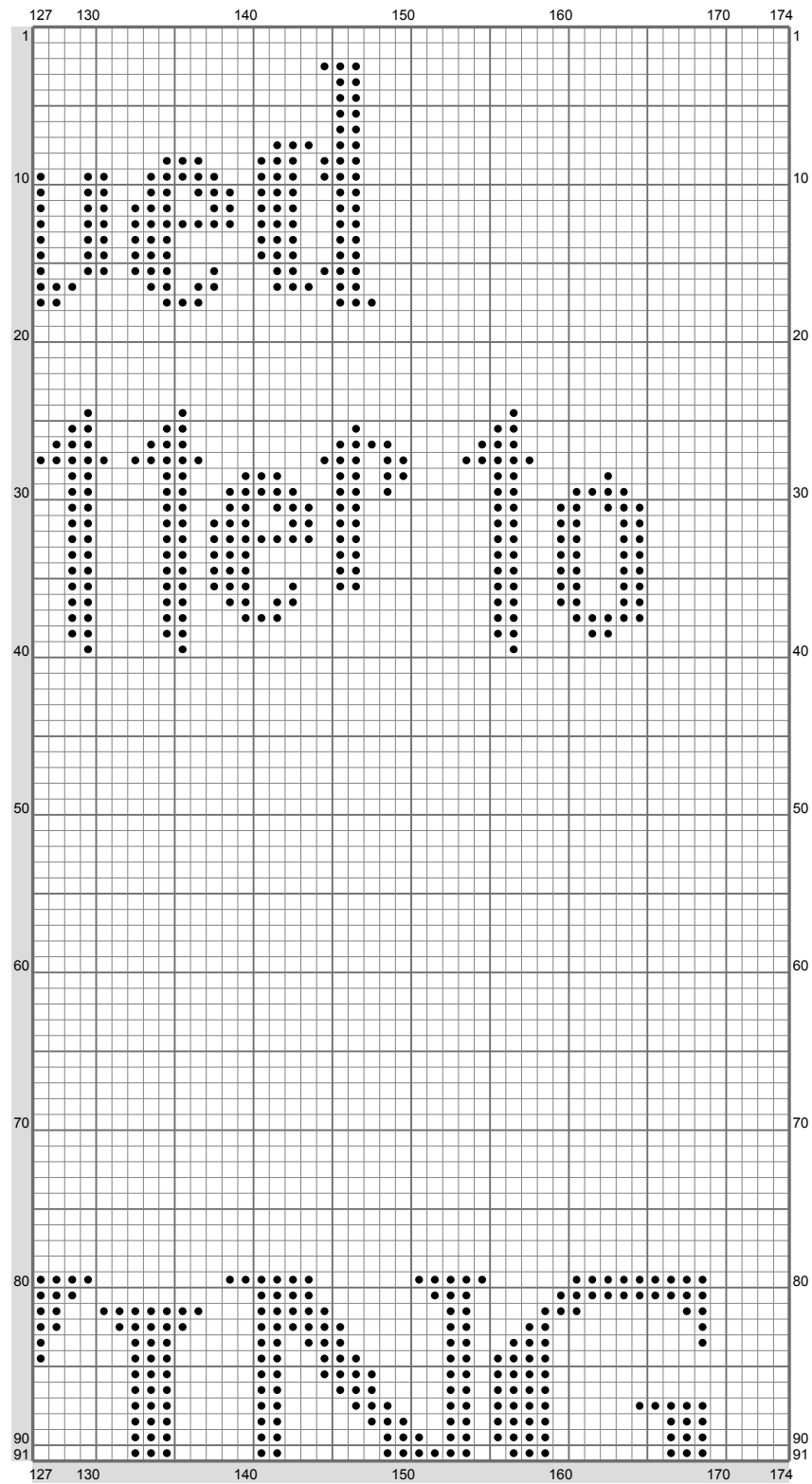
(This chart is printed using KG-Chart LE for Cross Stitch.)

Hogwarts, Shire, Jedi + GoT



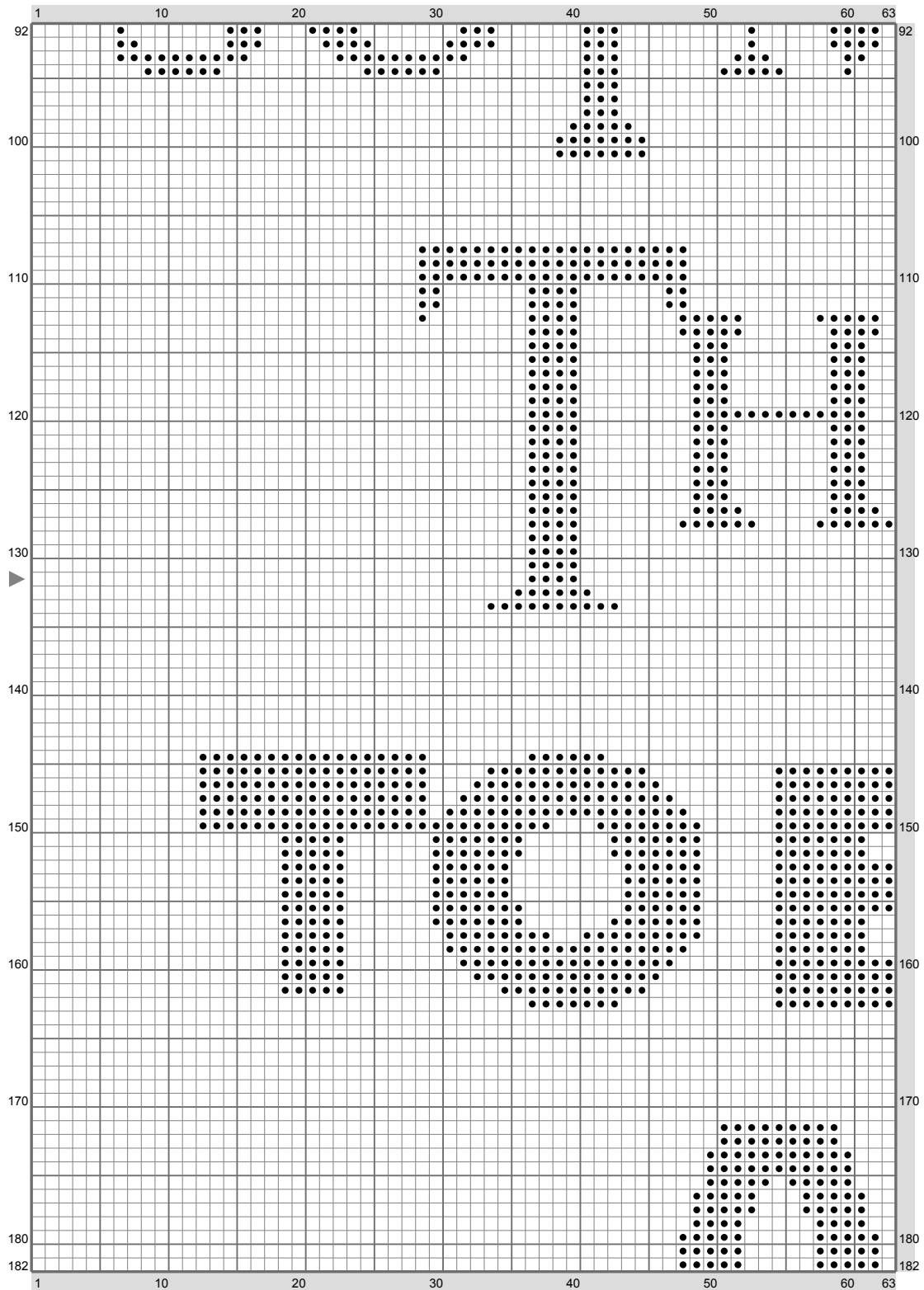
(This chart is printed using KG-Chart LE for Cross Stitch.)

Hogwarts, Shire, Jedi + GoT



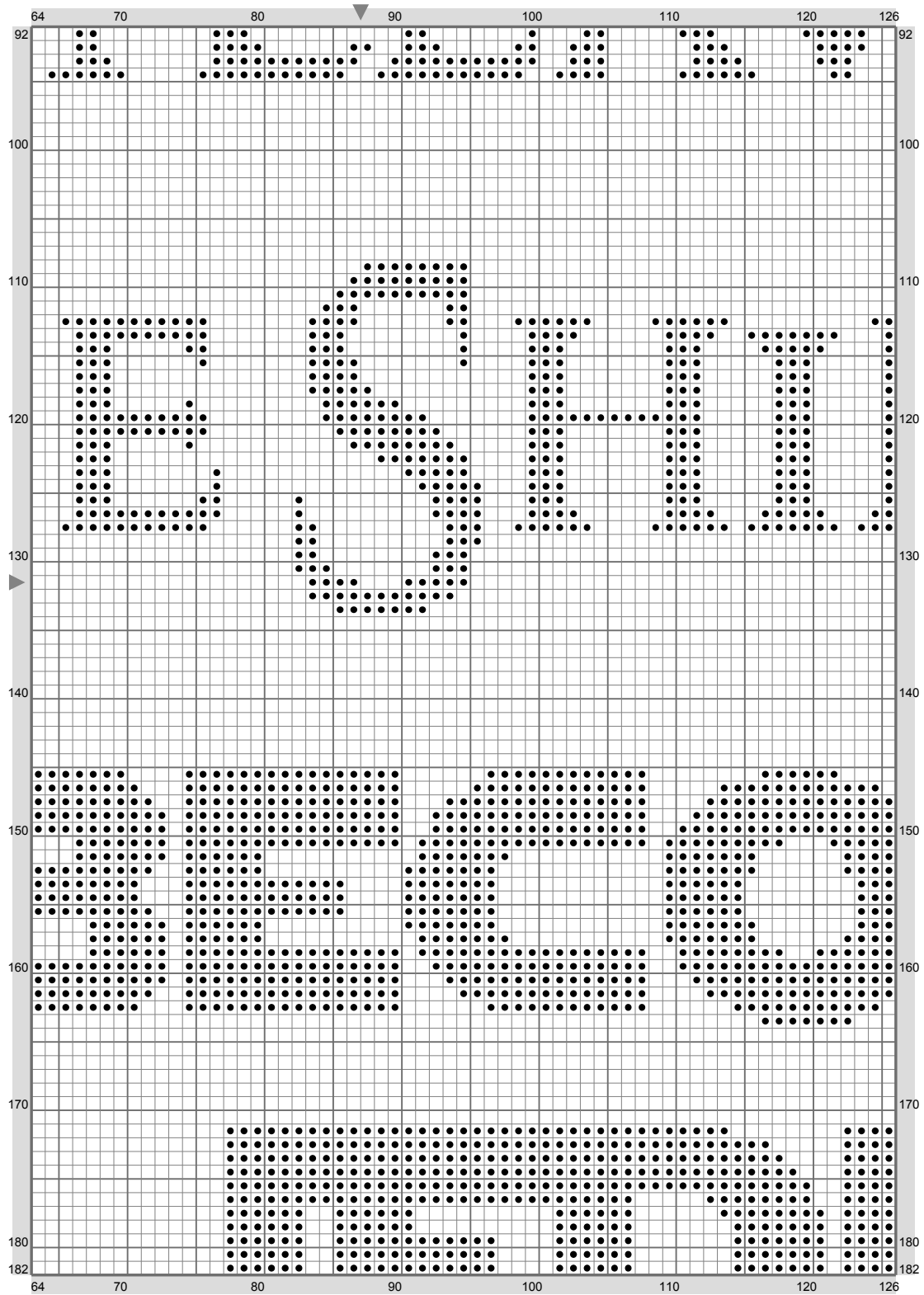
(This chart is printed using KG-Chart LE for Cross Stitch.)

Hogwarts, Shire, Jedi + GoT



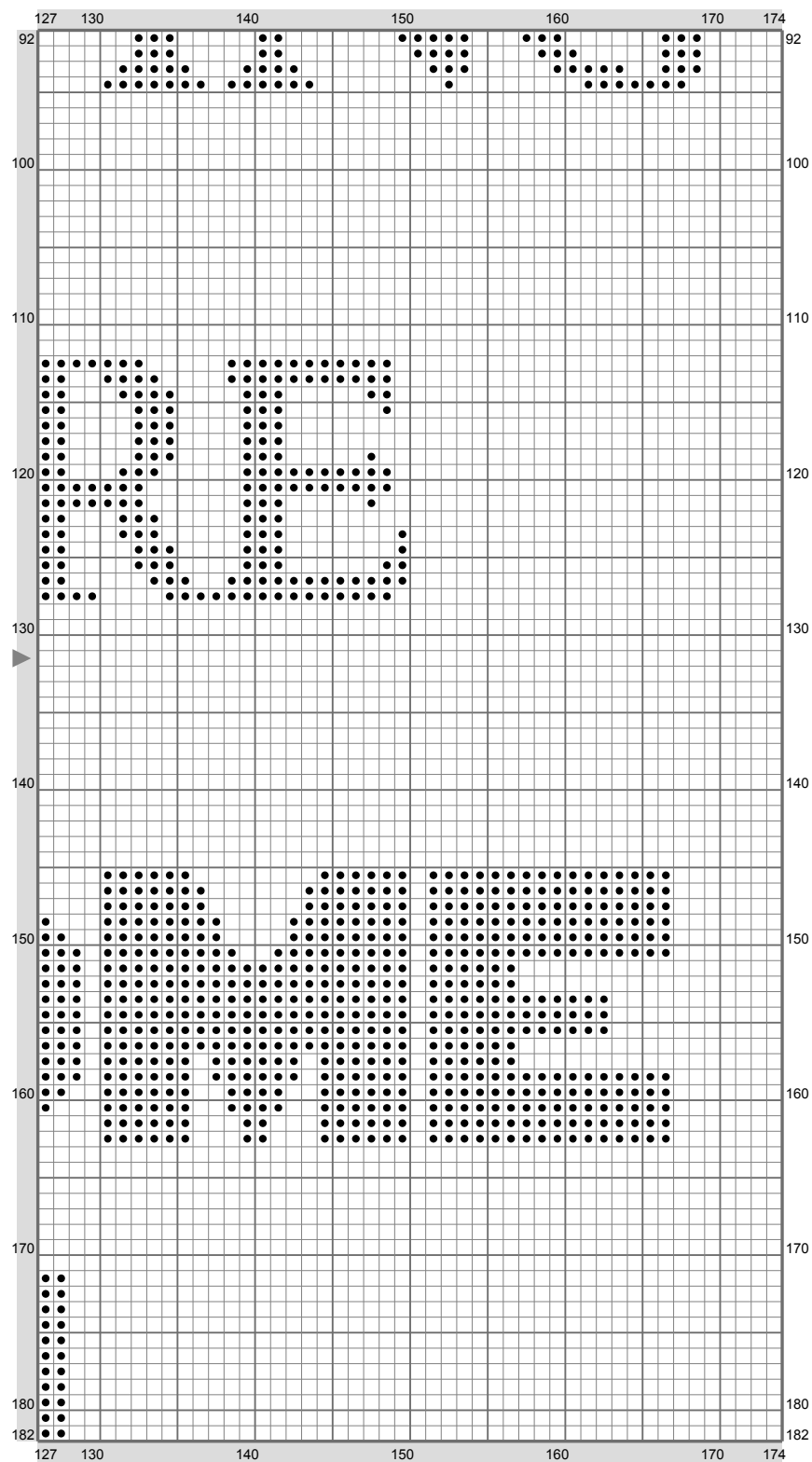
(This chart is printed using KG-Chart LE for Cross Stitch.)

Hogwarts, Shire, Jedi + GoT



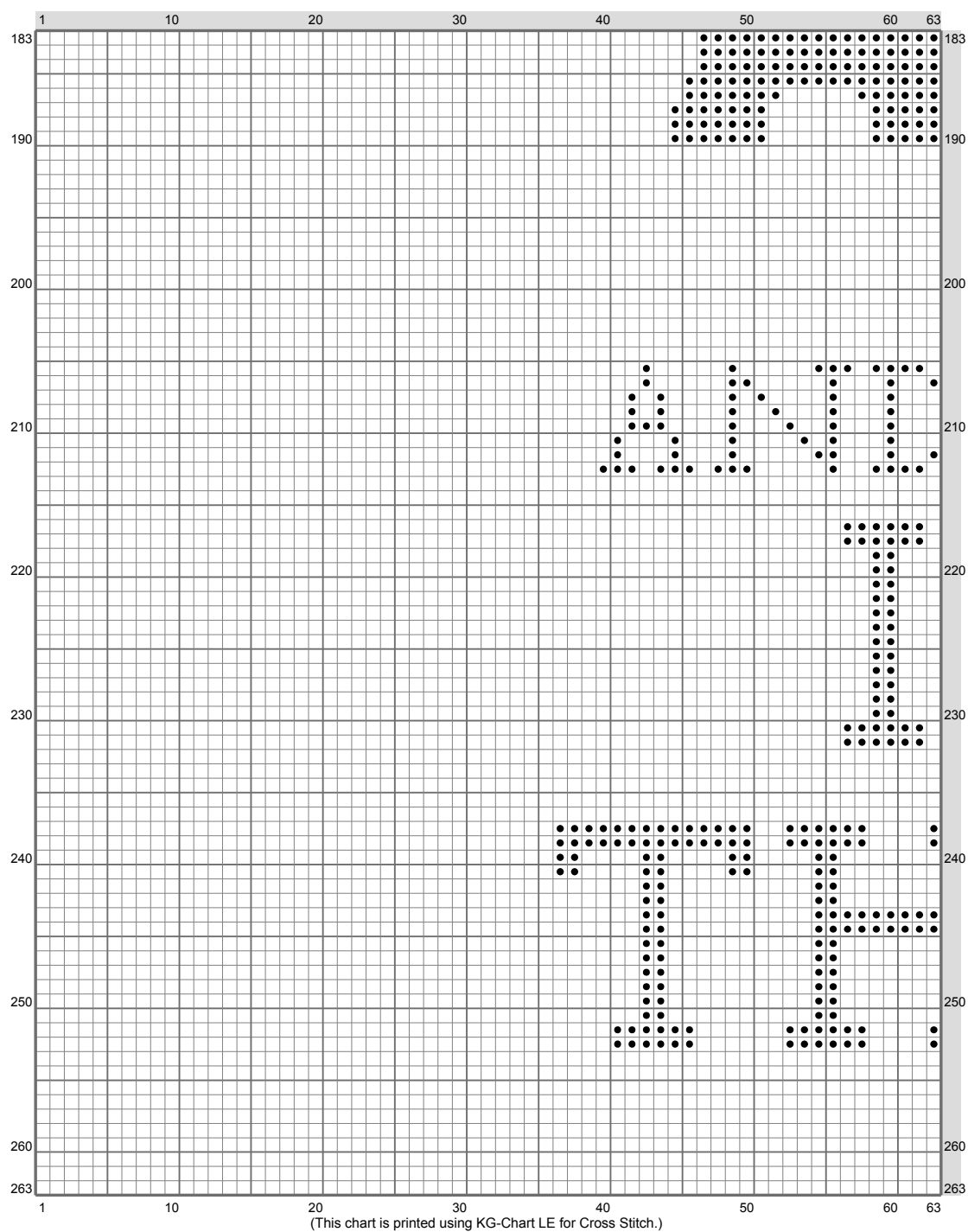
(This chart is printed using KG-Chart LE for Cross Stitch.)

Hogwarts, Shire, Jedi + GoT

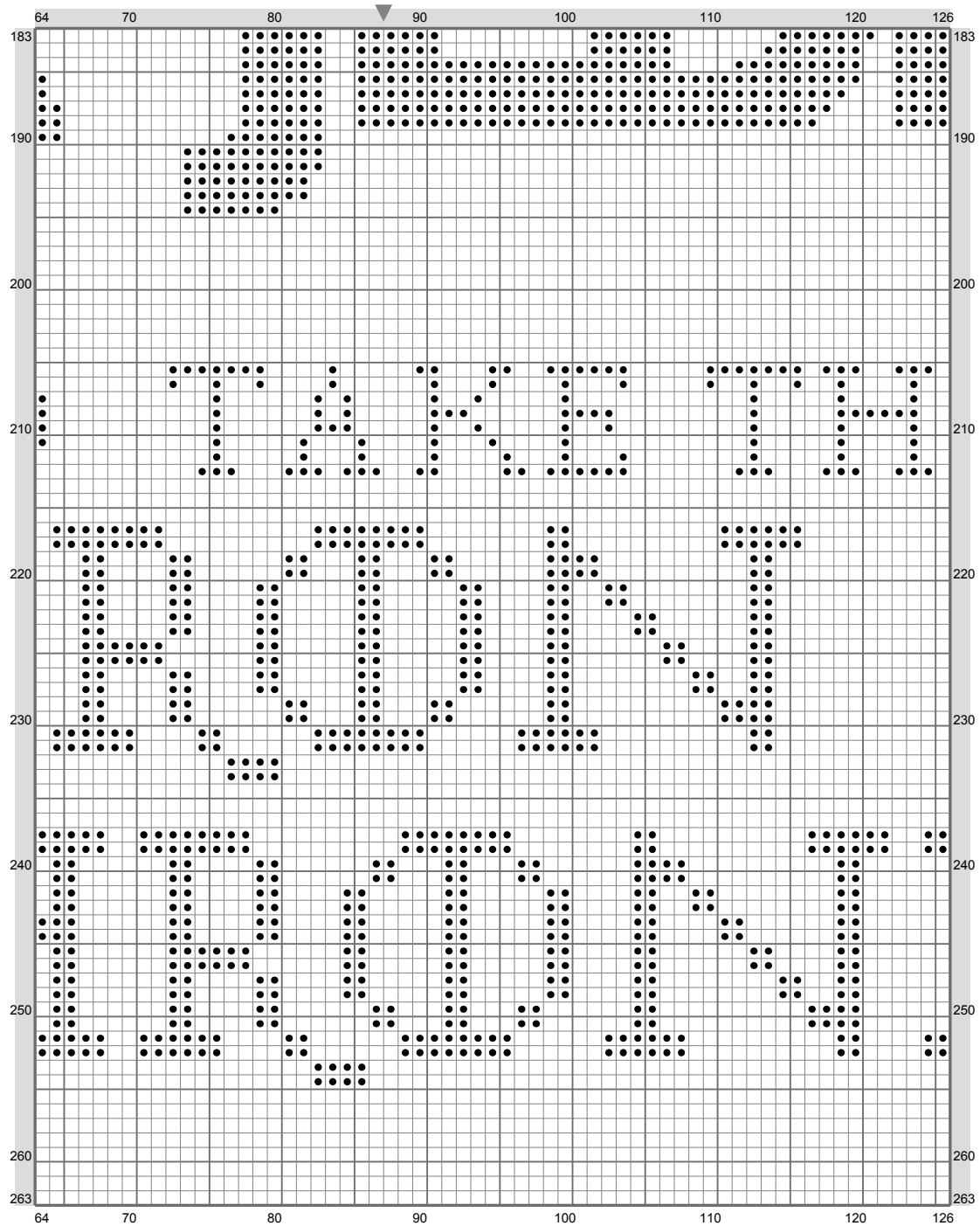


(This chart is printed using KG-Chart LE for Cross Stitch.)

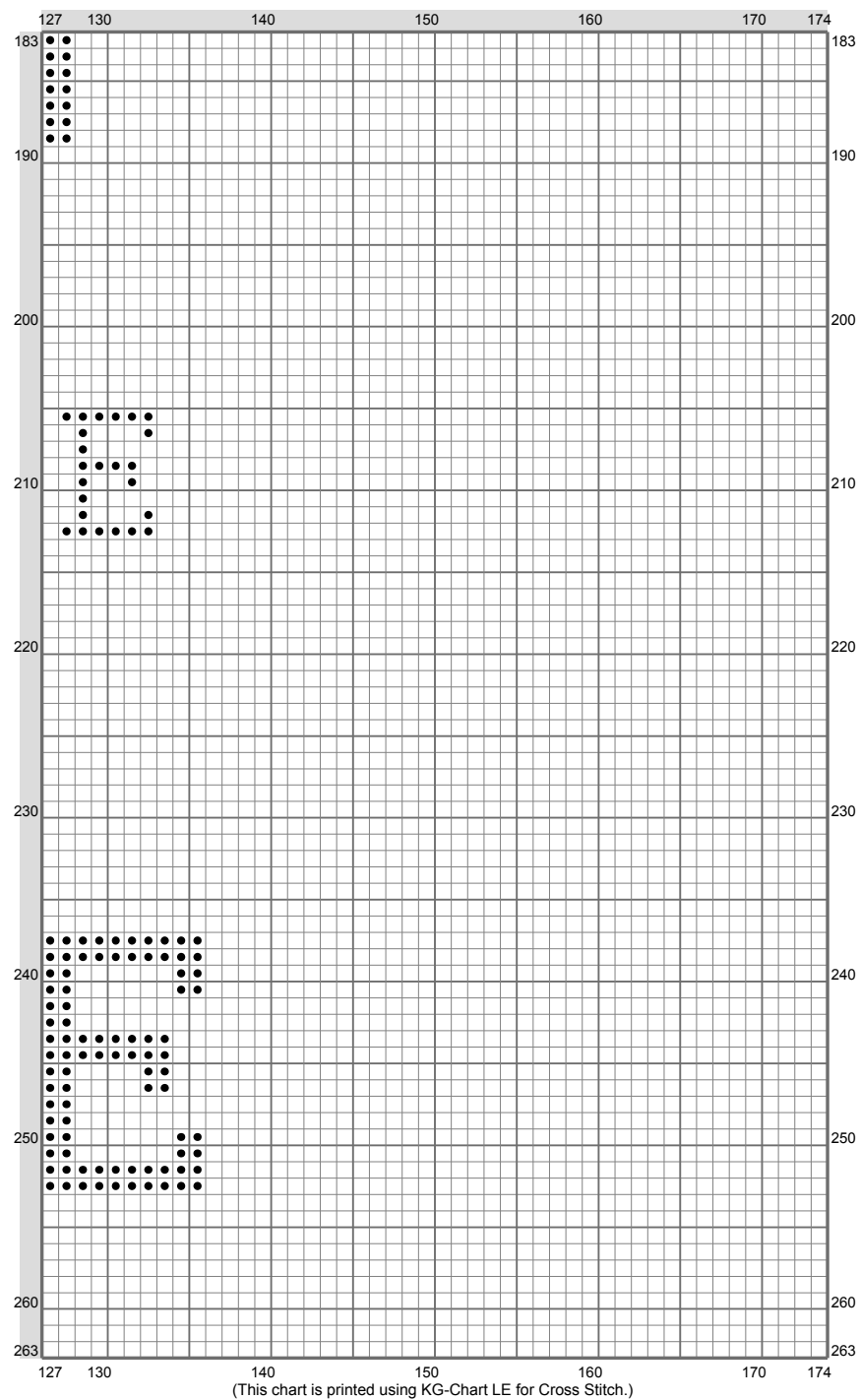
Hogwarts, Shire, Jedi + GoT



Hogwarts, Shire, Jedi + GoT



Hogwarts, Shire, Jedi + GoT



Hogwarts, Shire, Jedi + GoT

Stitch Count: 174w x 263h

Finished Size: 31.56 cm x 47.71 cm (14 ct./inch)

Cloth: Linen

Cloth's Color: White

of colors: 1 Colors

Color Table (DMC)

Cross Stitch

 310 (7973 ct)