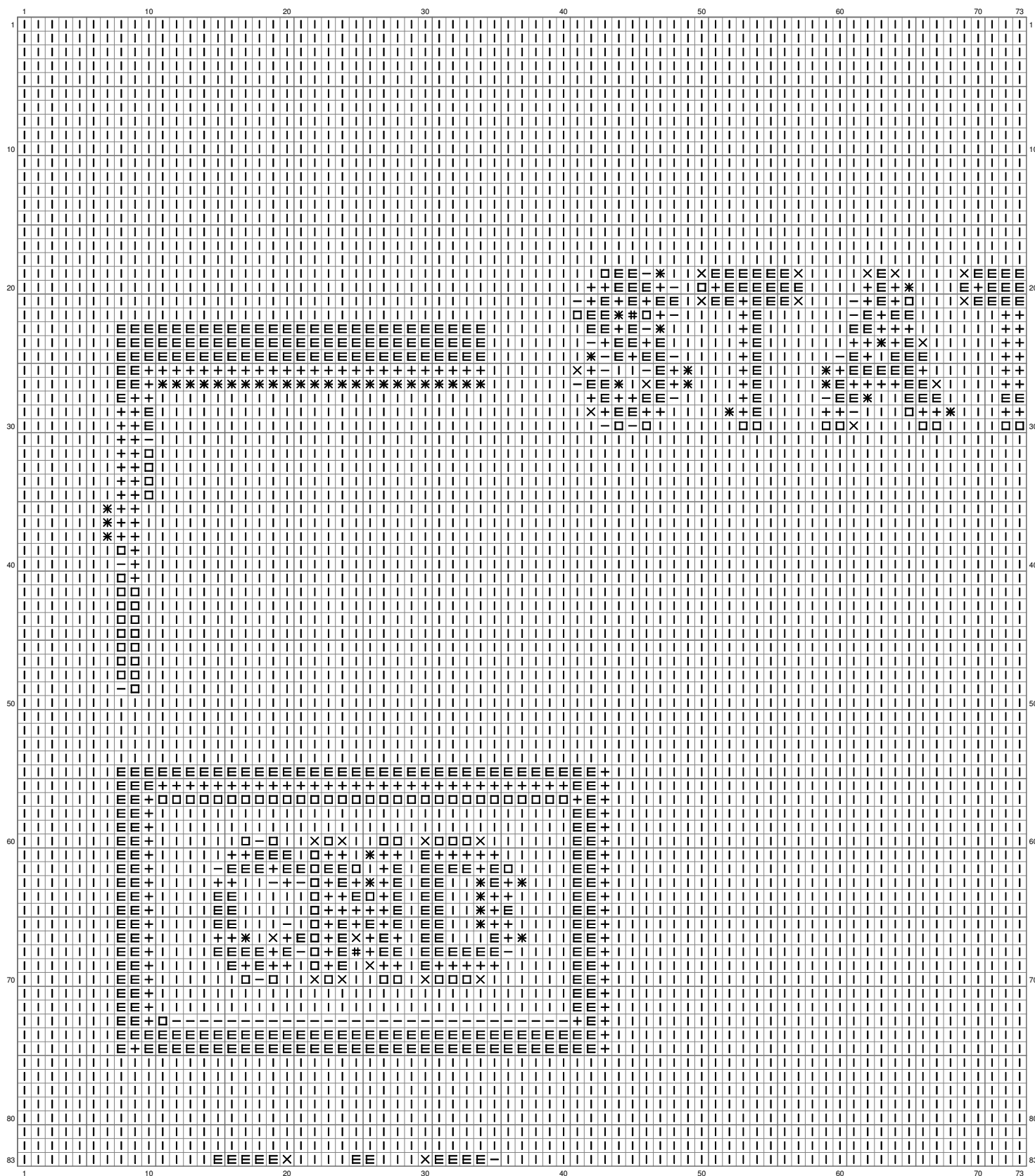
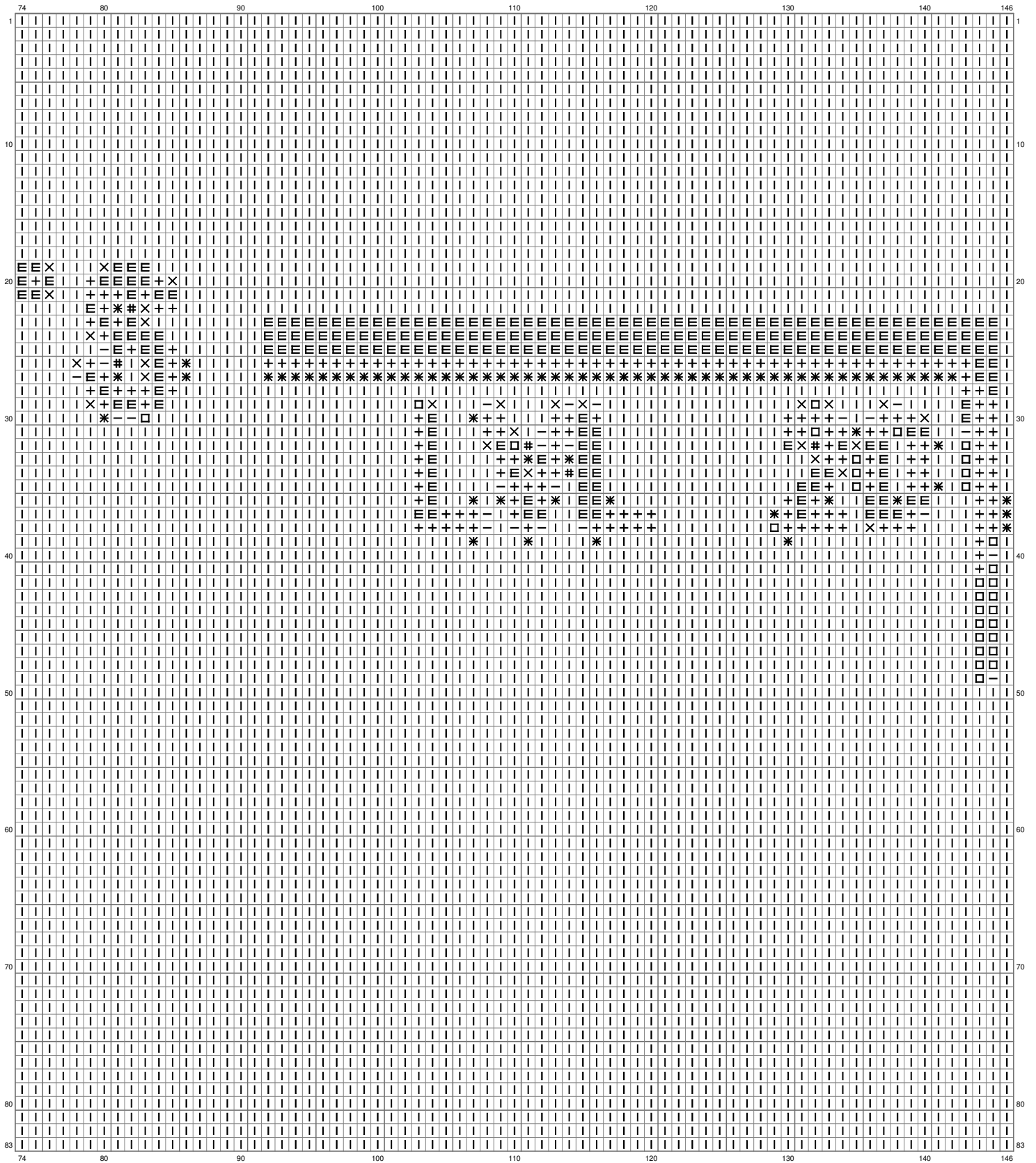


Untitled



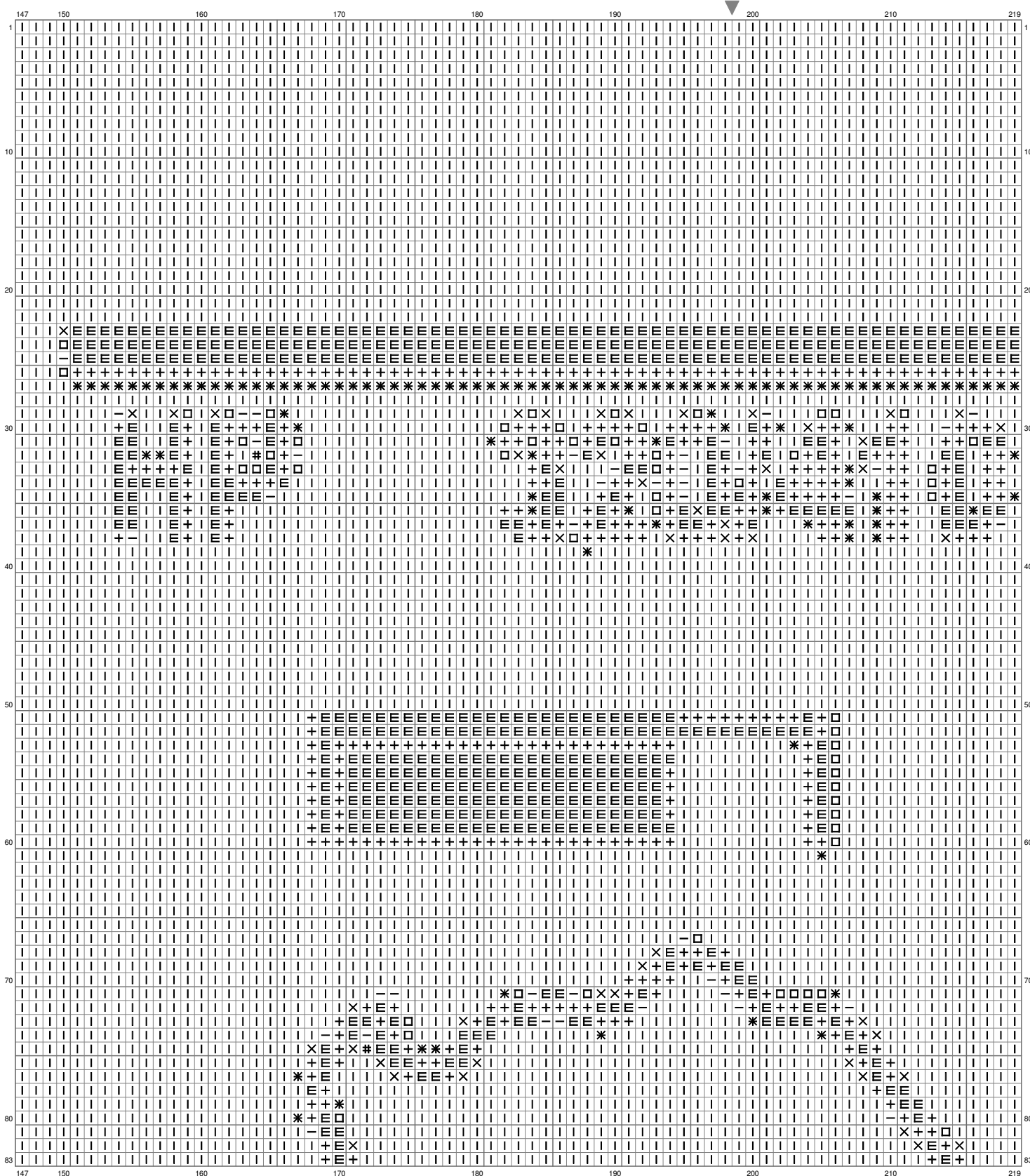
(This chart is printed using KG-Chart LE for Cross Stitch.)

Untitled



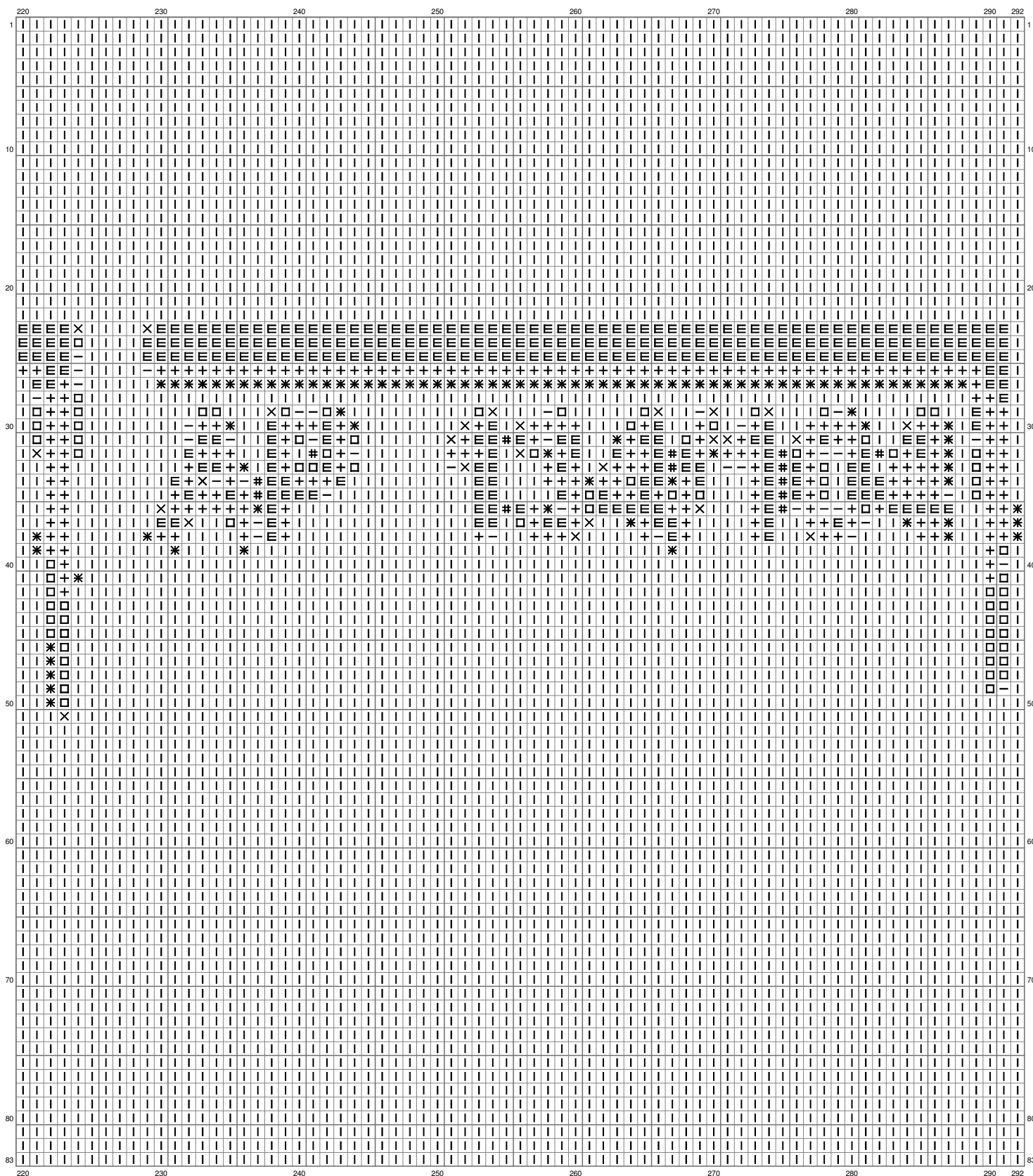
(This chart is printed using KG-Chart LE for Cross Stitch.)

Untitled



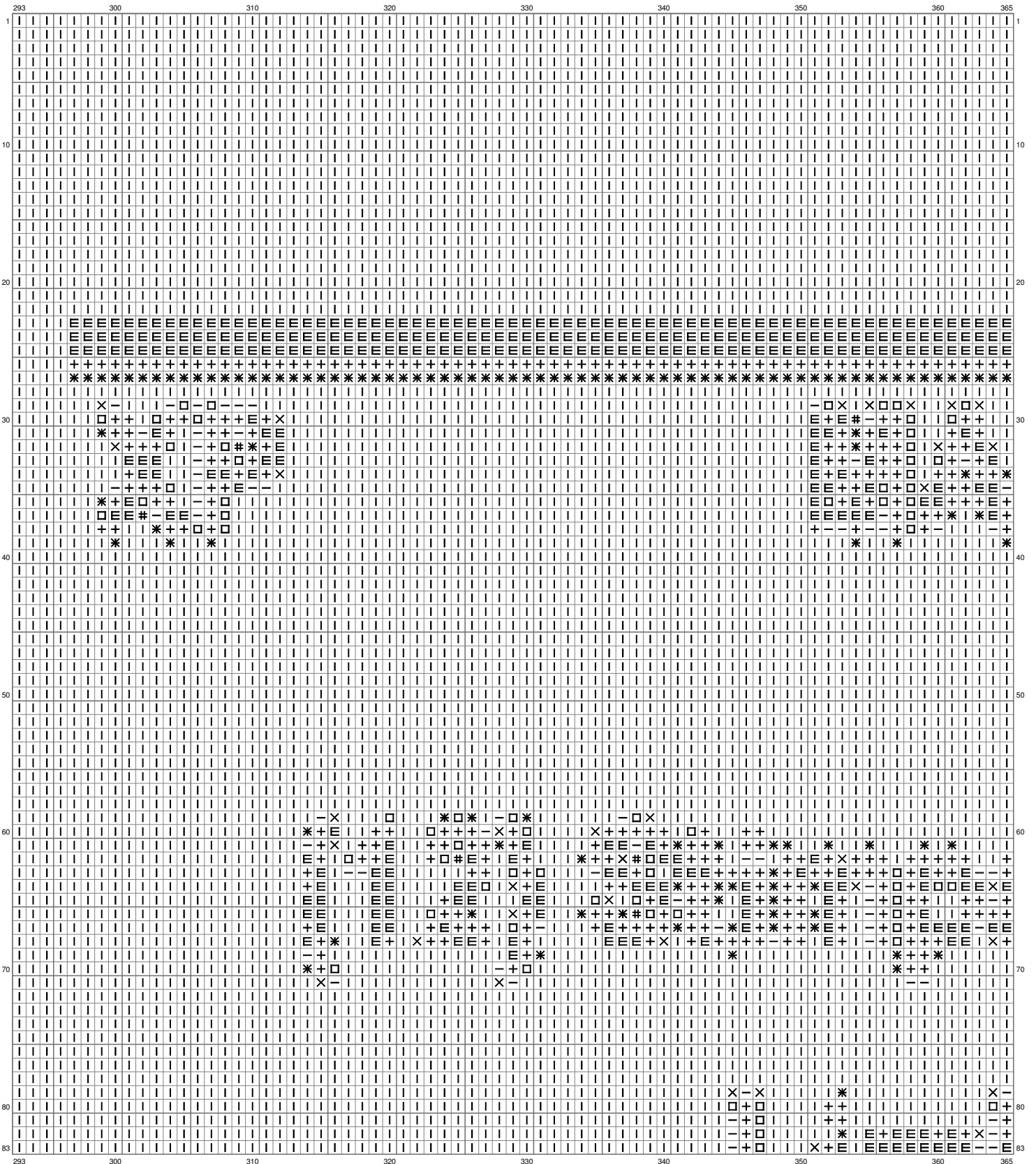
(This chart is printed using KG-Chart LE for Cross Stitch.)

Untitled



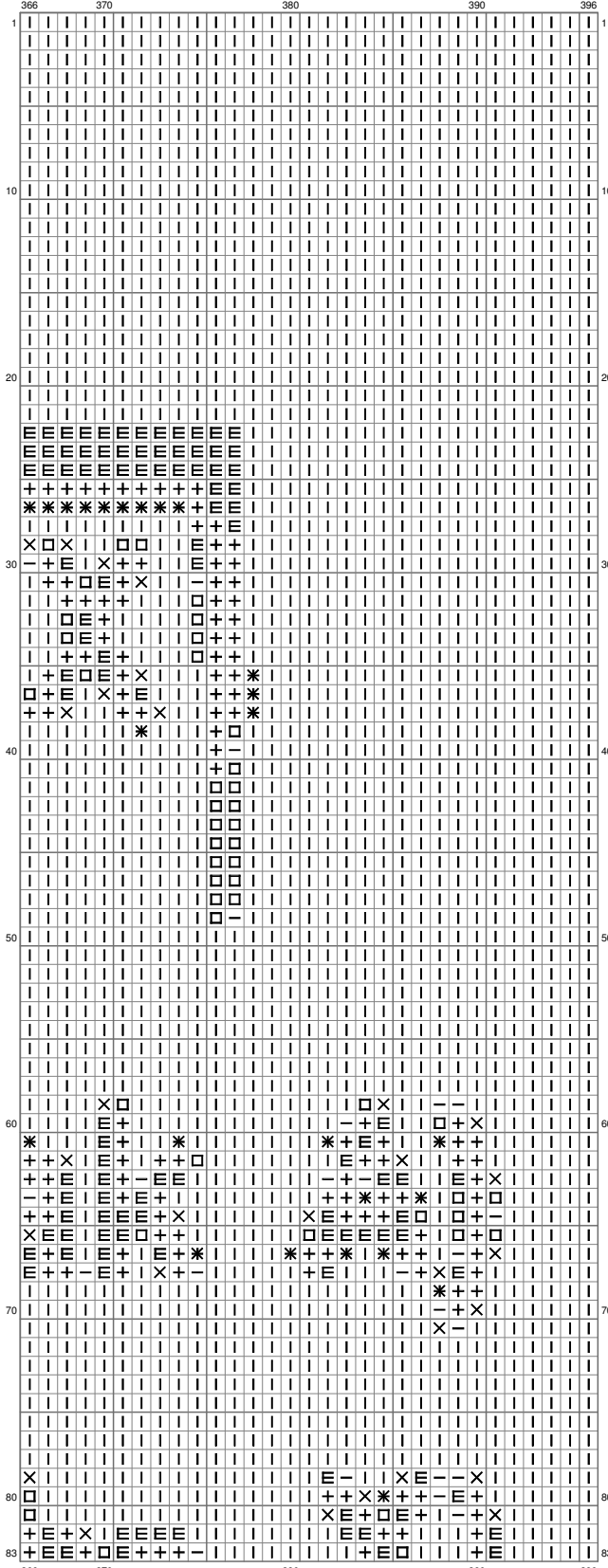
(This chart is printed using KG-Chart LE for Cross Stitch.)

Untitled



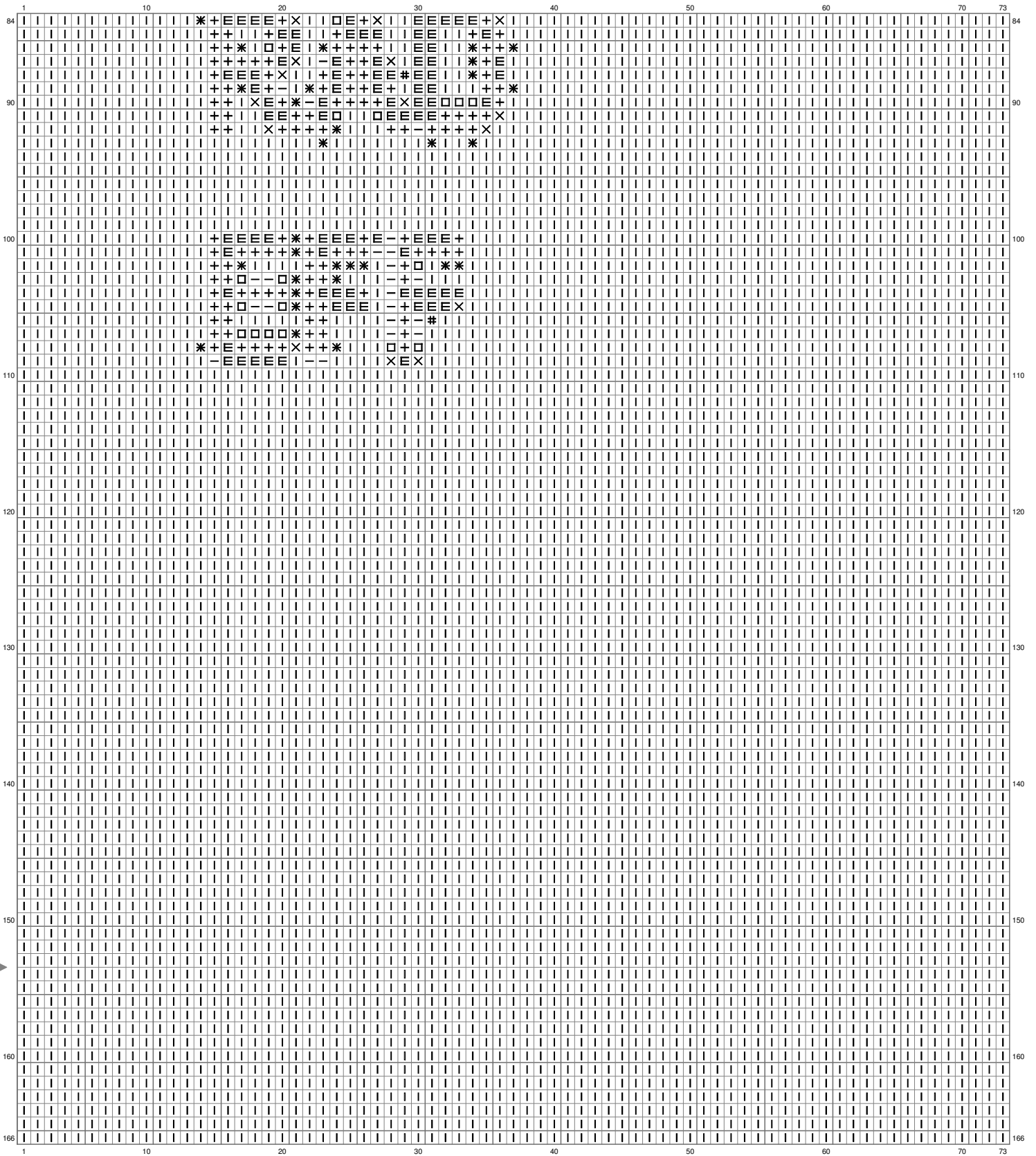
(This chart is printed using KG-Chart LE for Cross Stitch.)

Untitled



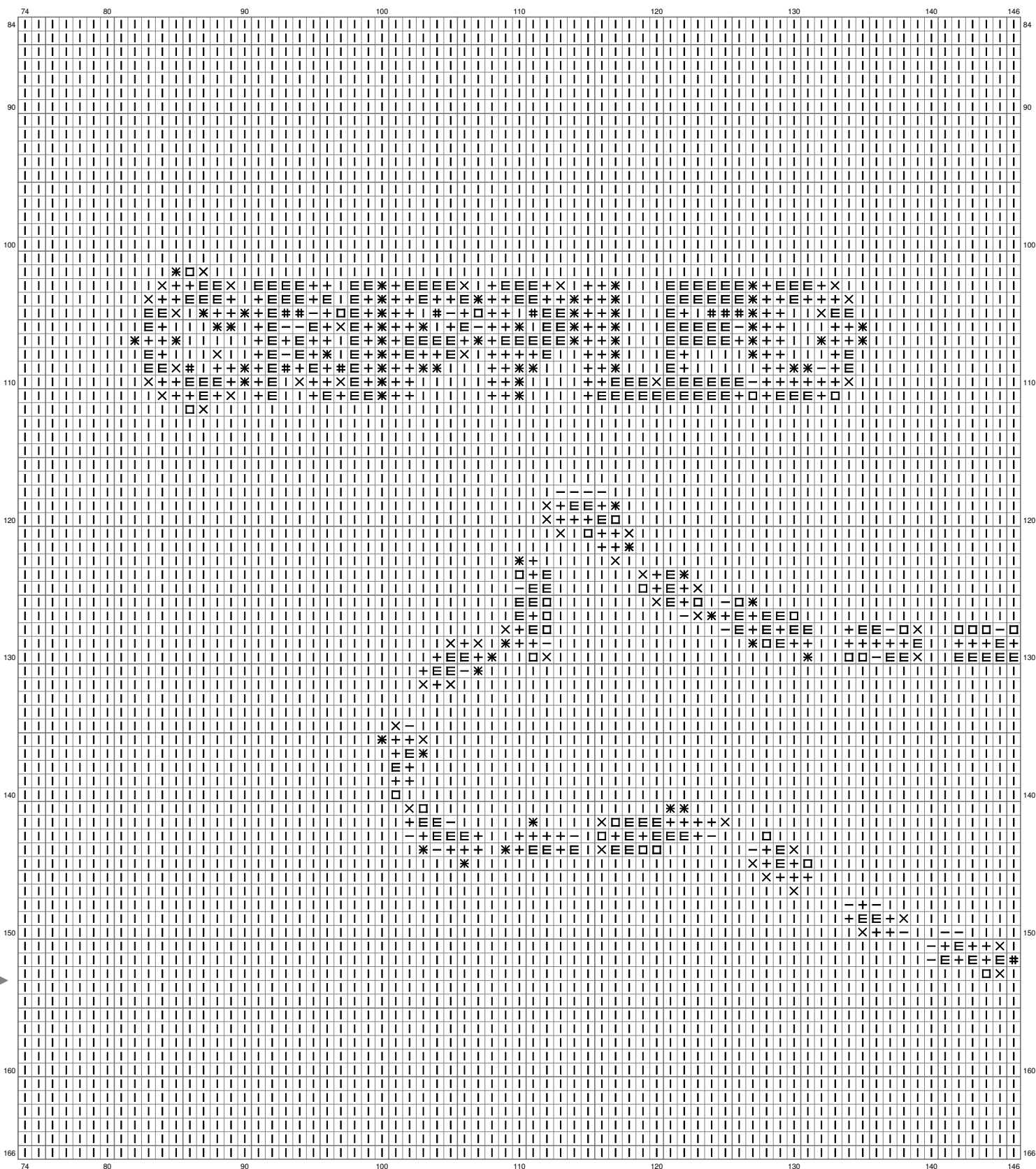
(This chart is printed using KG-Chart LE for Cross Stitch.)

Untitled



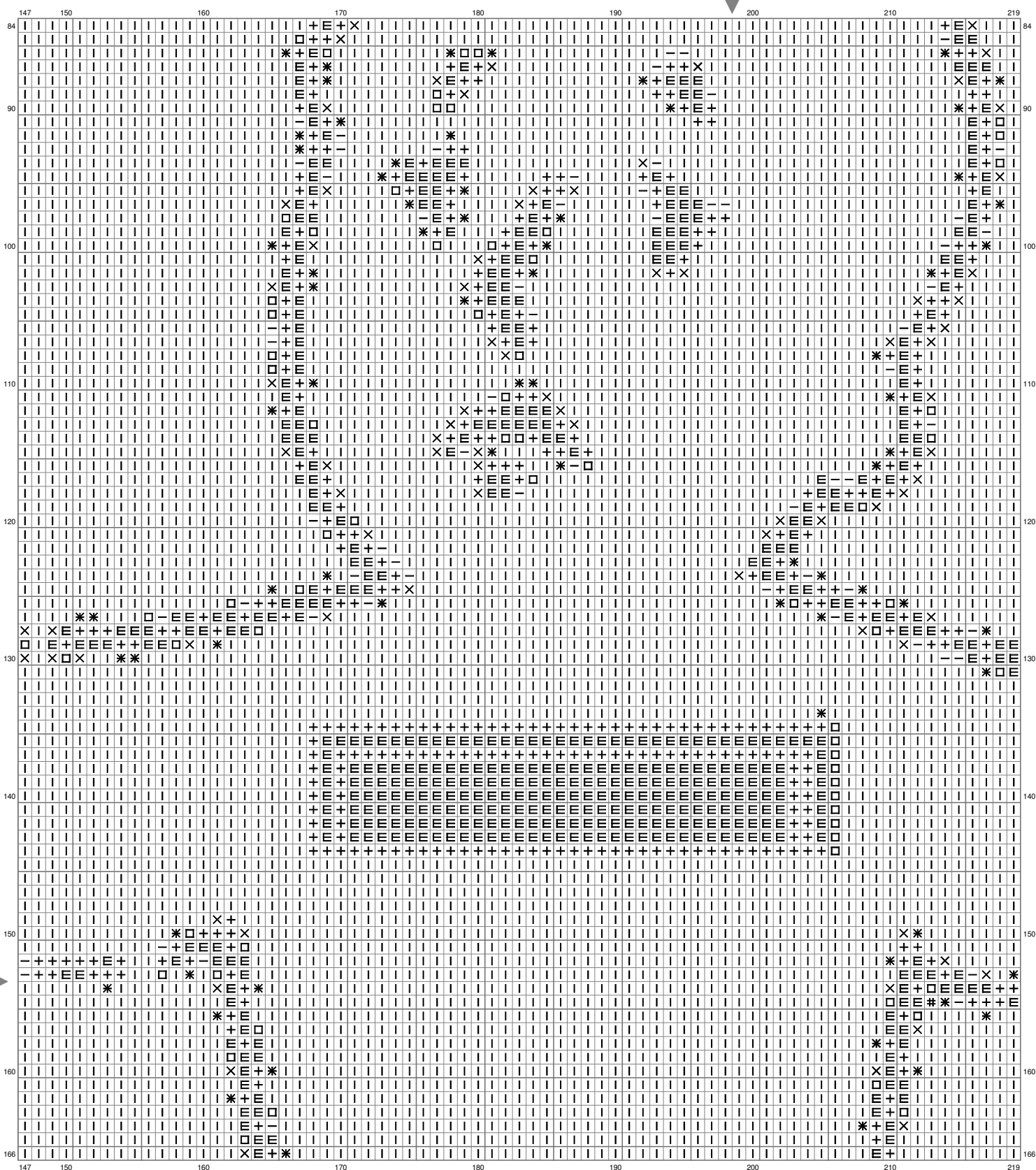
(This chart is printed using KG-Chart LE for Cross Stitch.)

Untitled



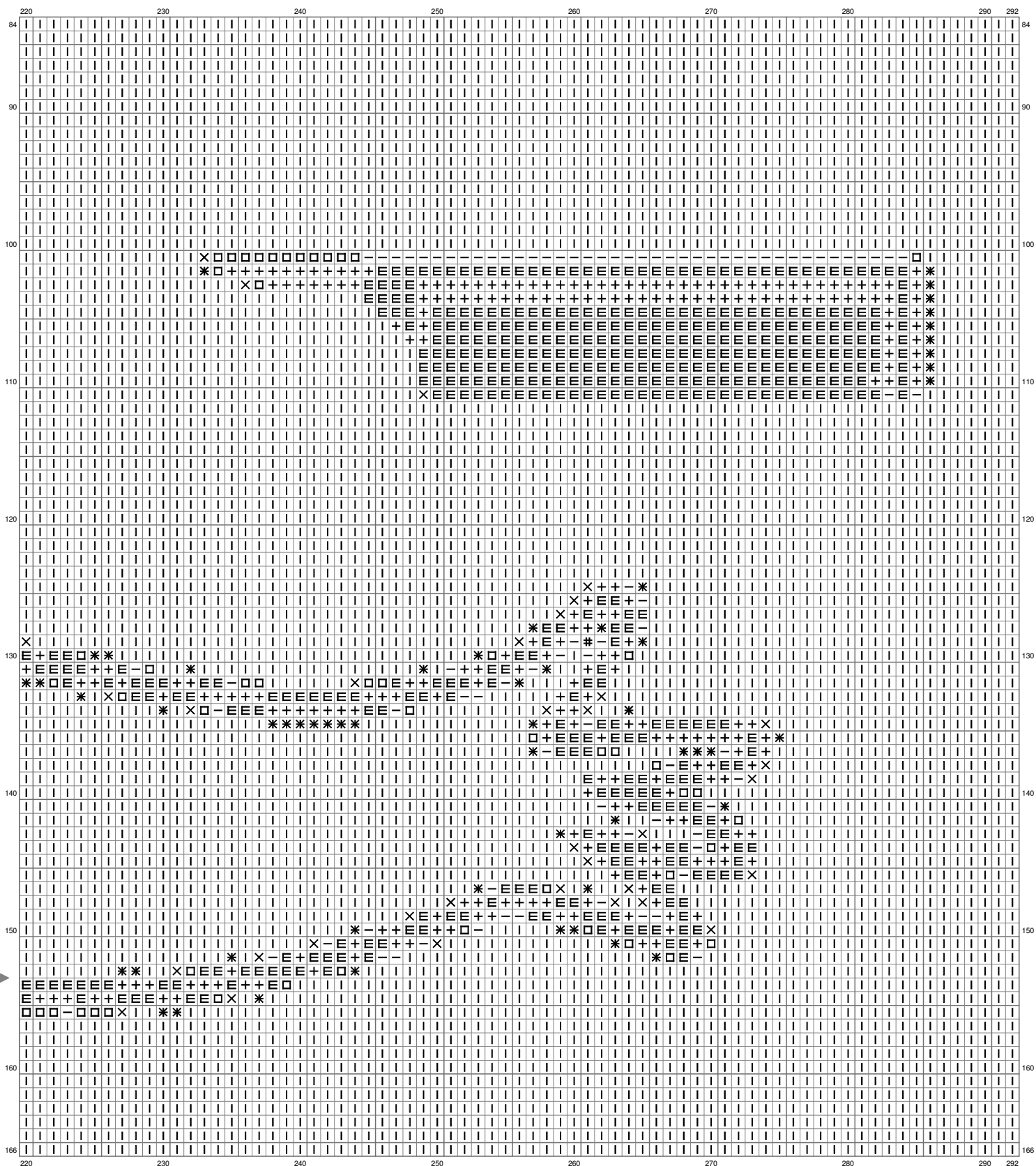
(This chart is printed using KG-Chart LE for Cross Stitch.)

Untitled



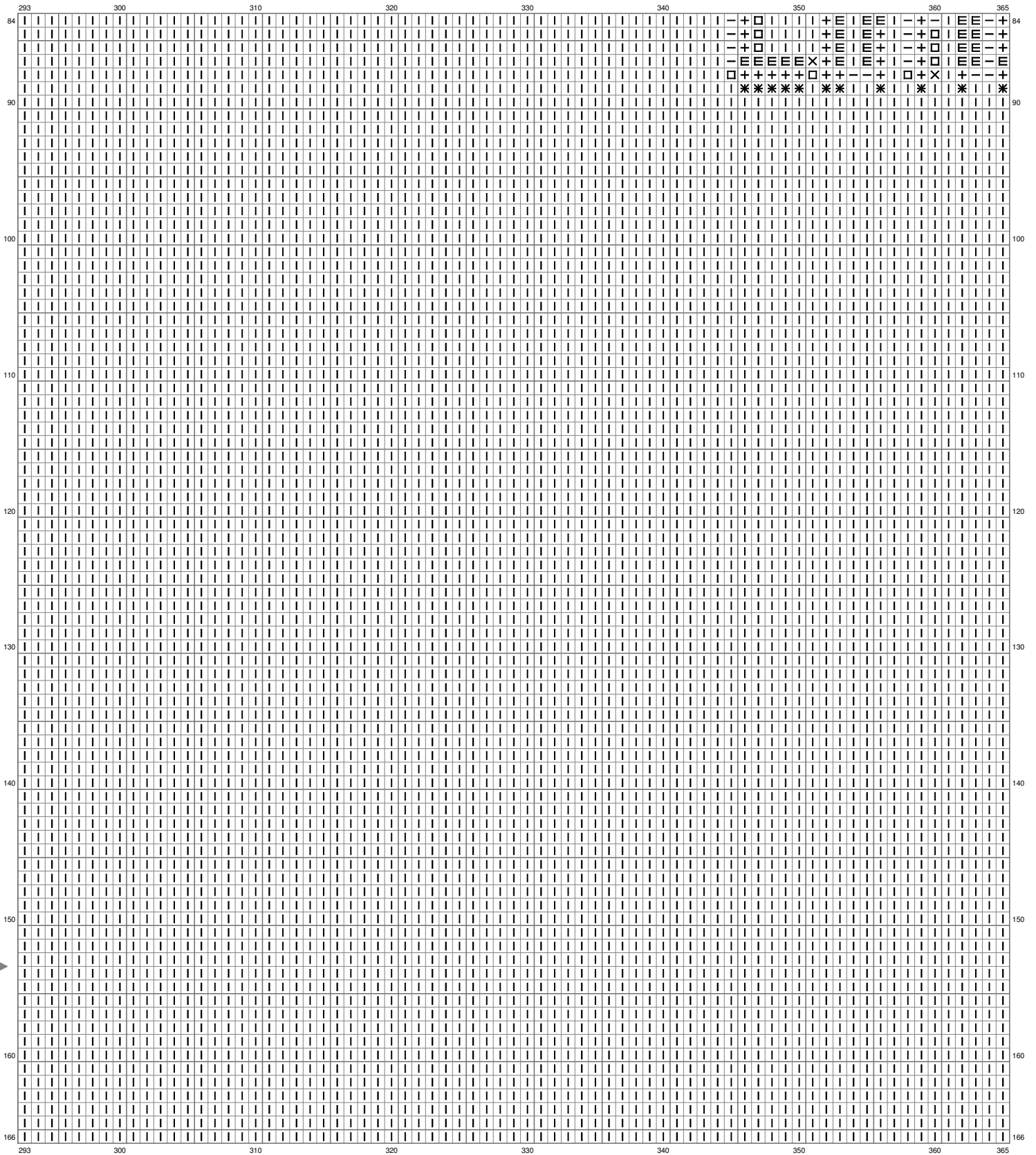
(This chart is printed using KG-Chart LE for Cross Stitch.)

Untitled



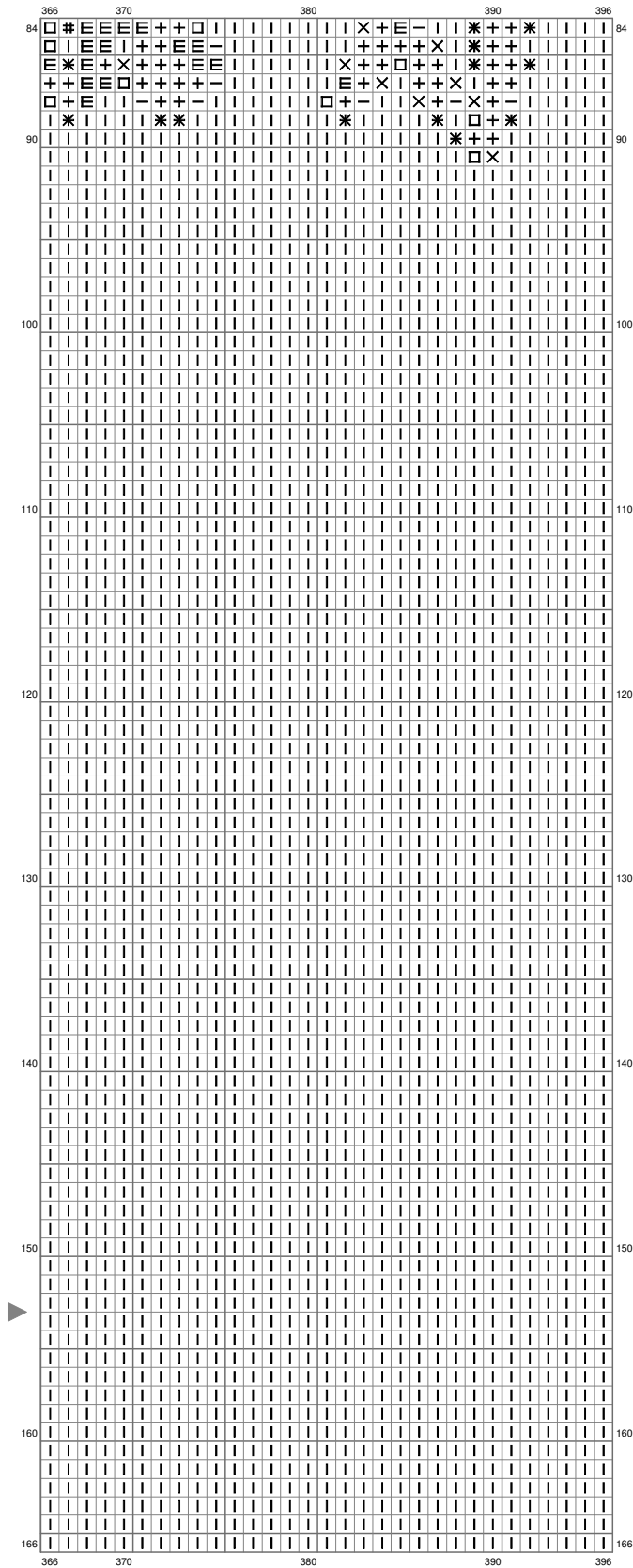
(This chart is printed using KG-Chart LE for Cross Stitch.)

Untitled



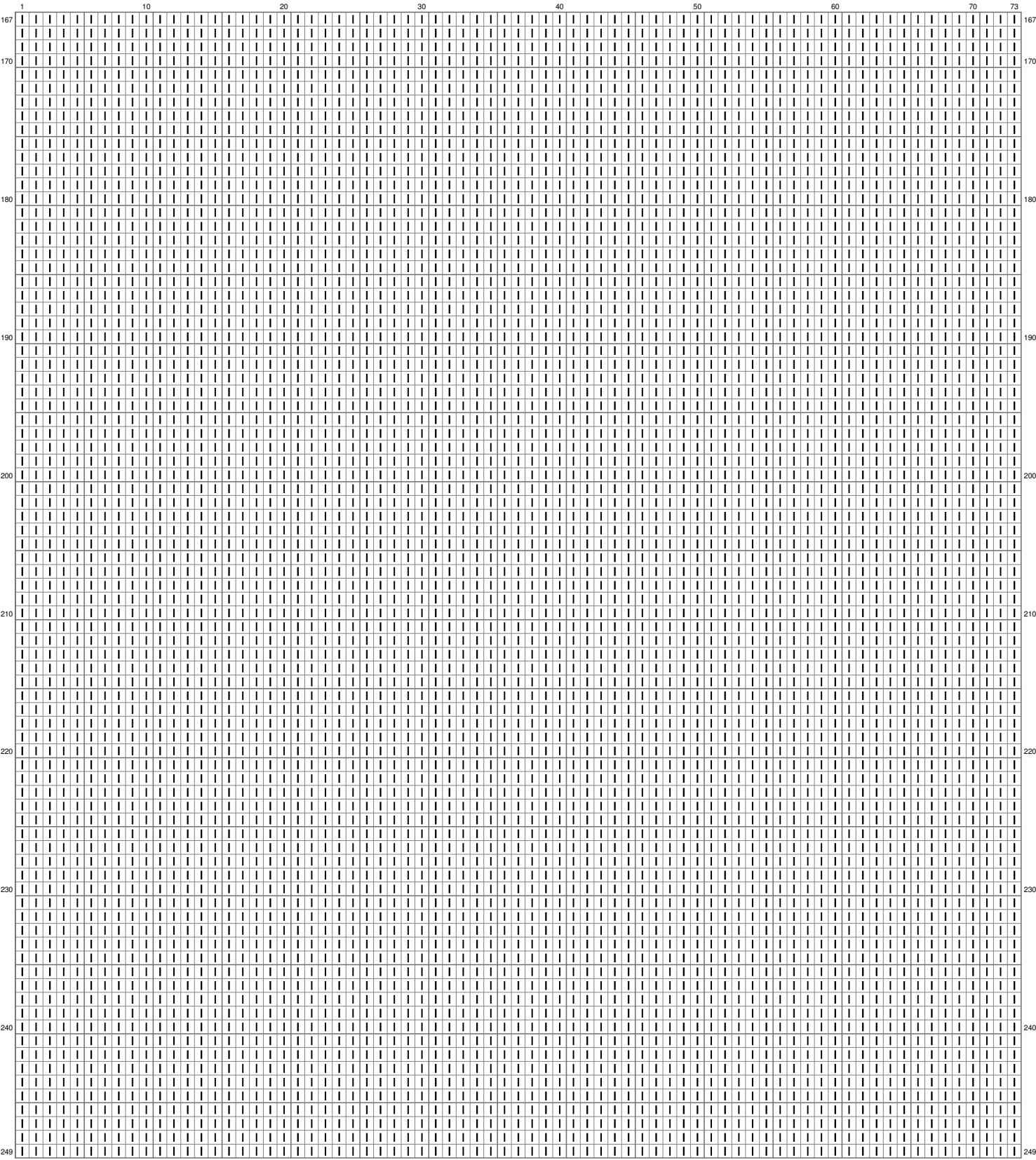
(This chart is printed using KG-Chart LE for Cross Stitch.)

Untitled



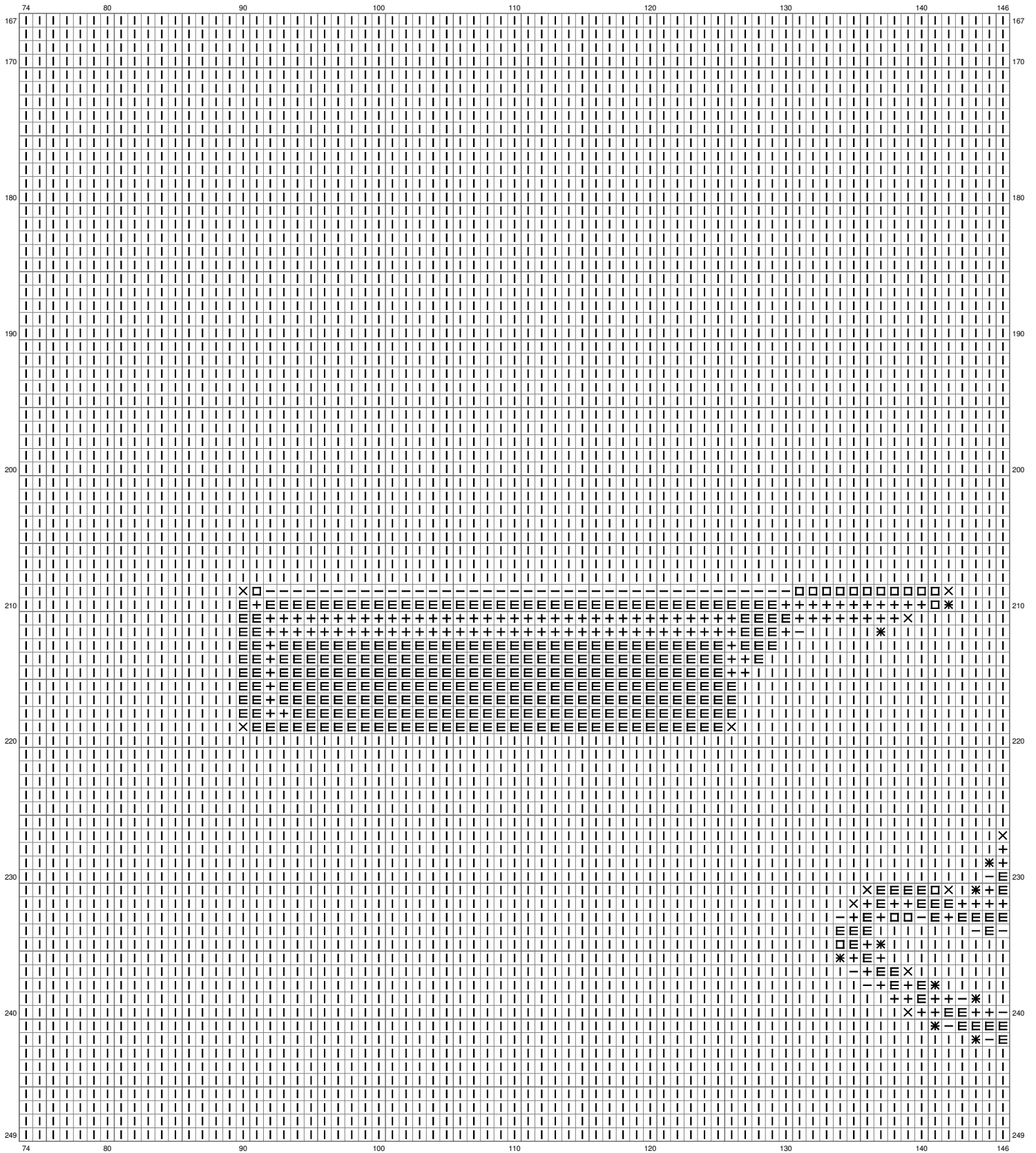
(This chart is printed using KG-Chart LE for Cross Stitch.)

Untitled



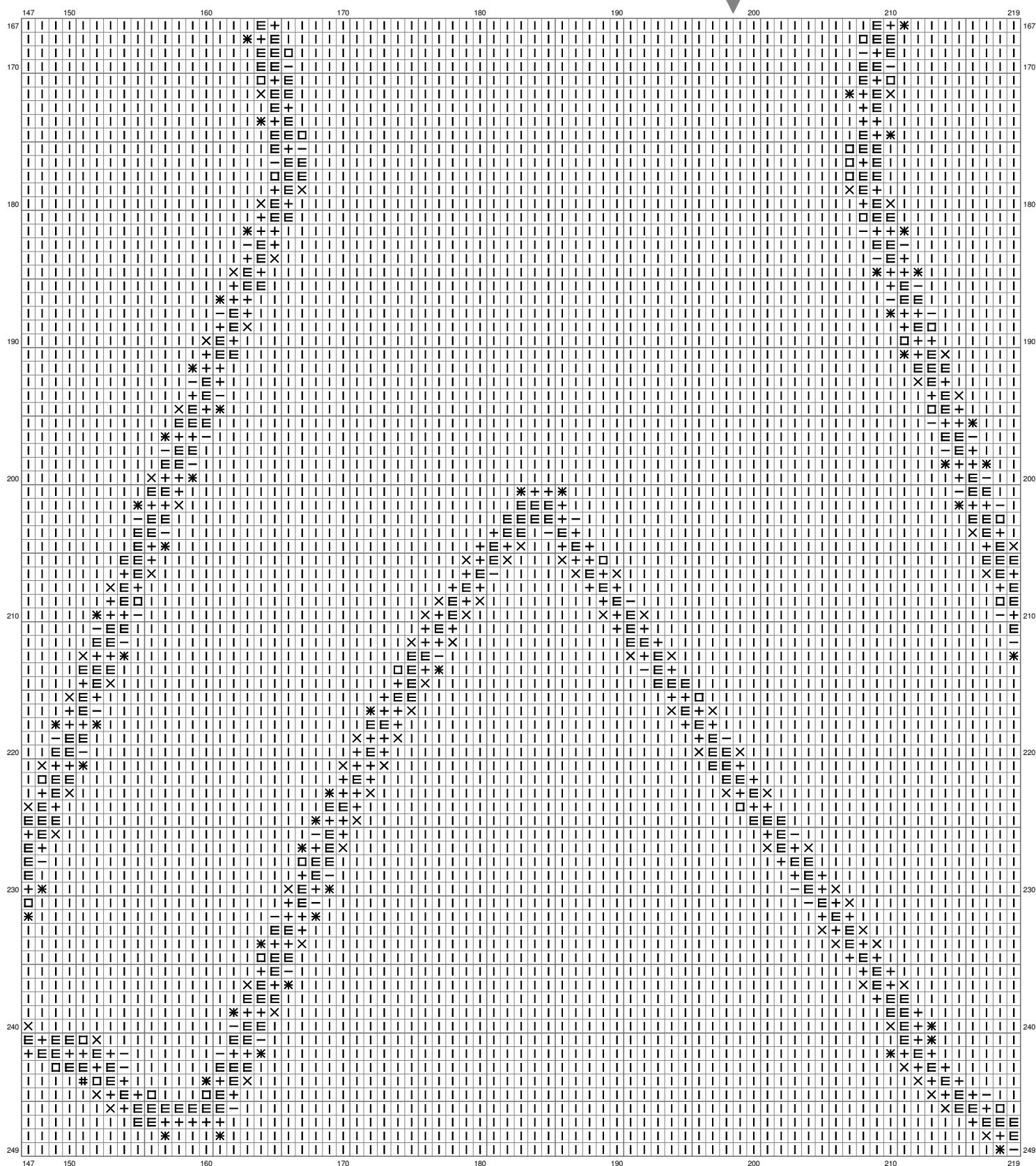
(This chart is printed using KG-Chart LE for Cross Stitch.)

Untitled



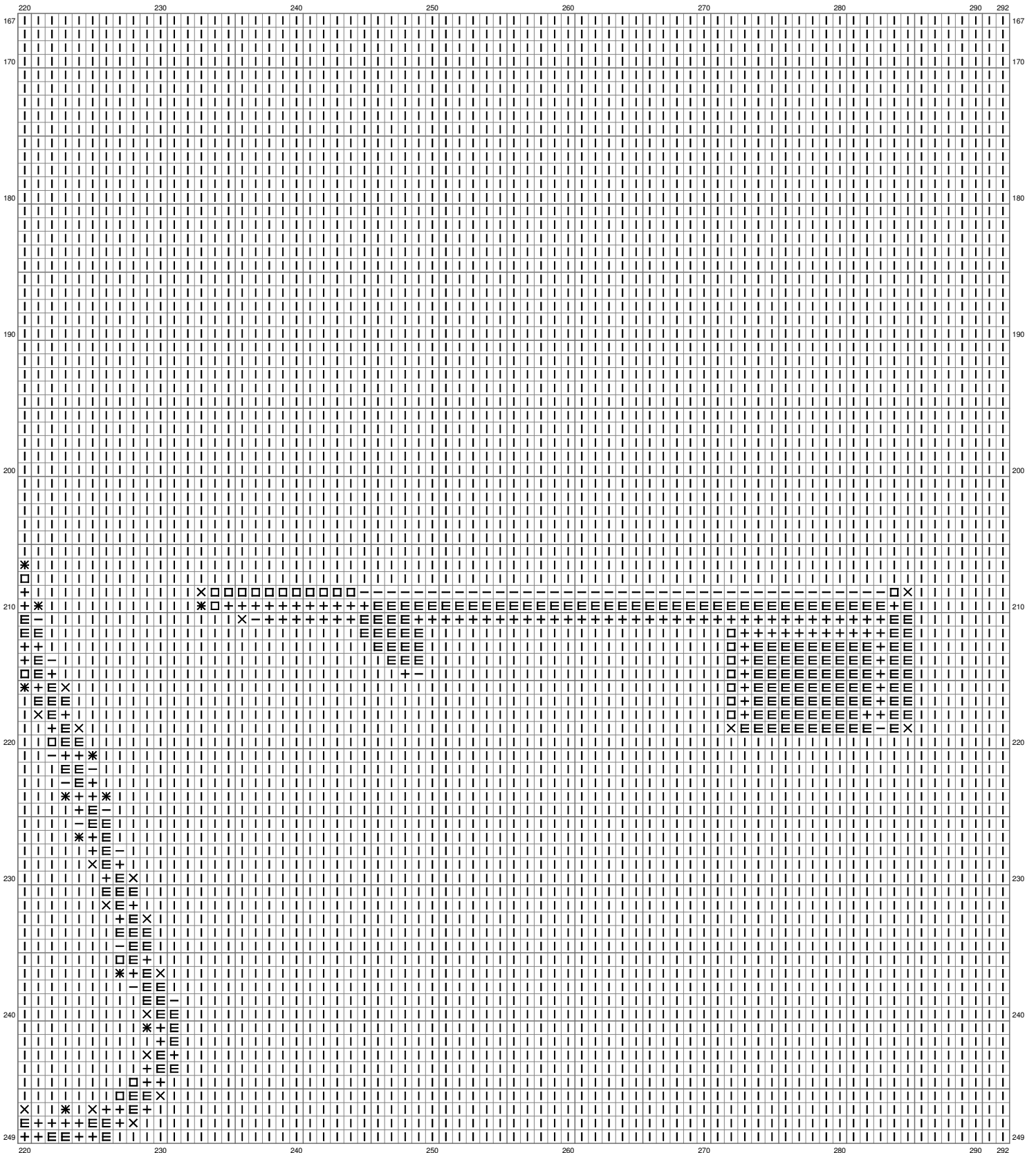
(This chart is printed using KG-Chart LE for Cross Stitch.)

Untitled



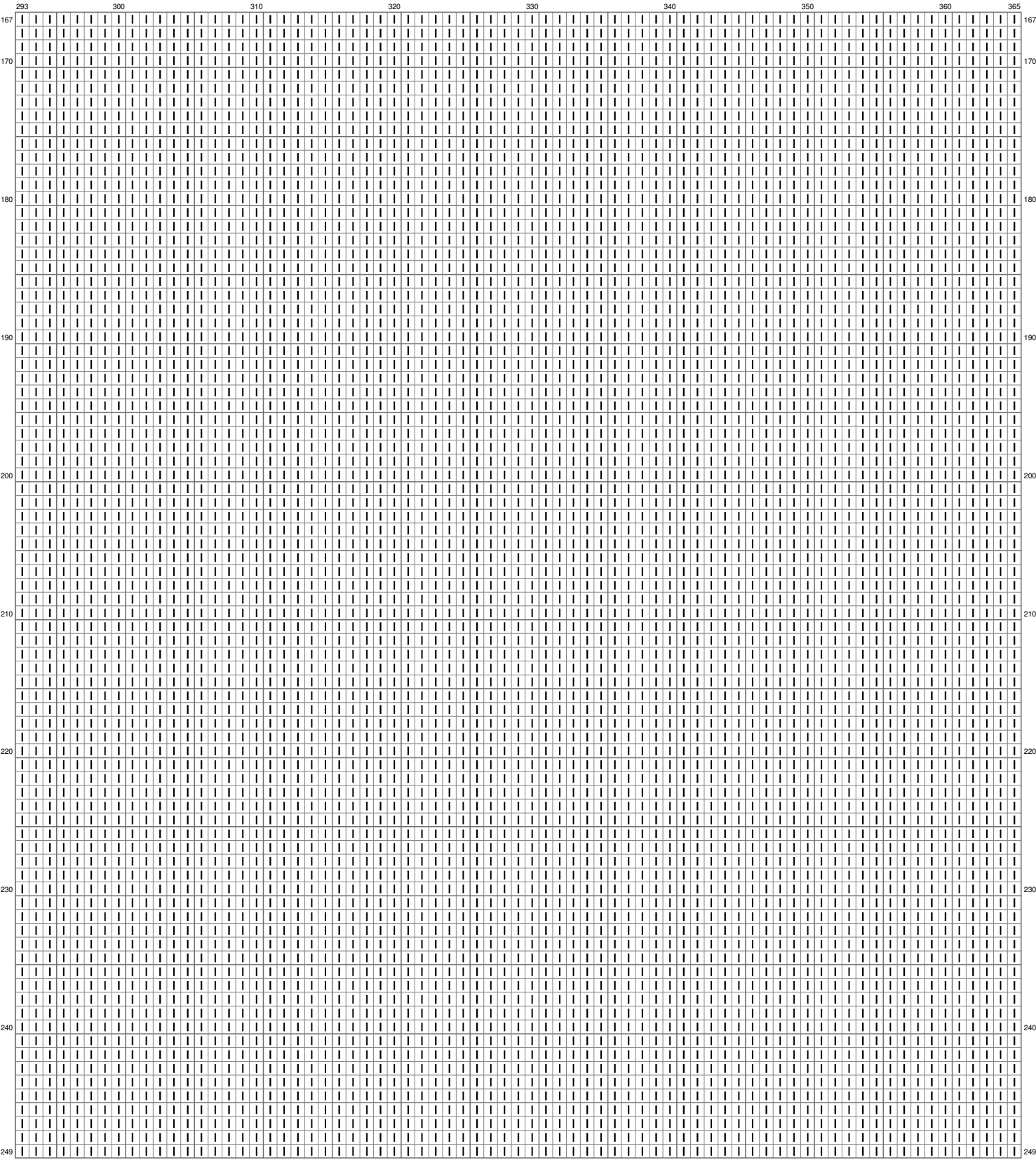
(This chart is printed using KG-Chart LE for Cross Stitch.)

Untitled



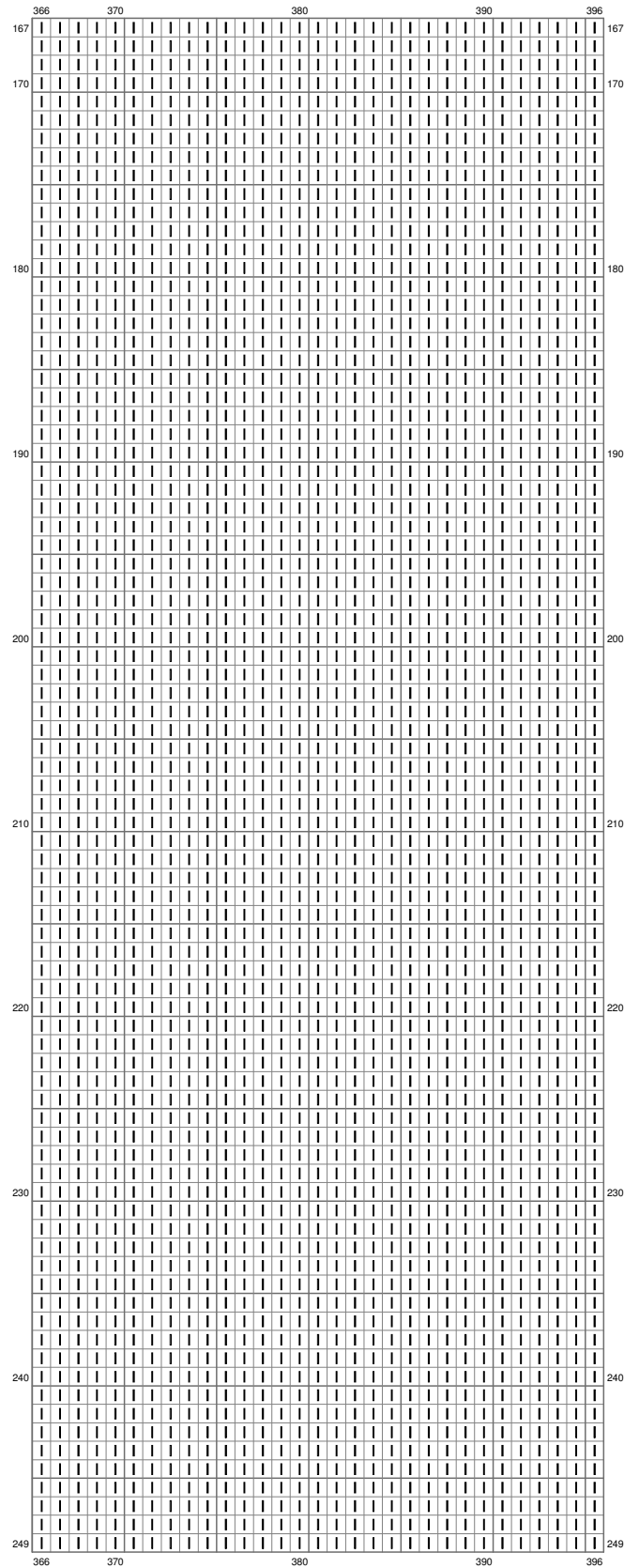
(This chart is printed using KG-Chart LE for Cross Stitch.)

Untitled



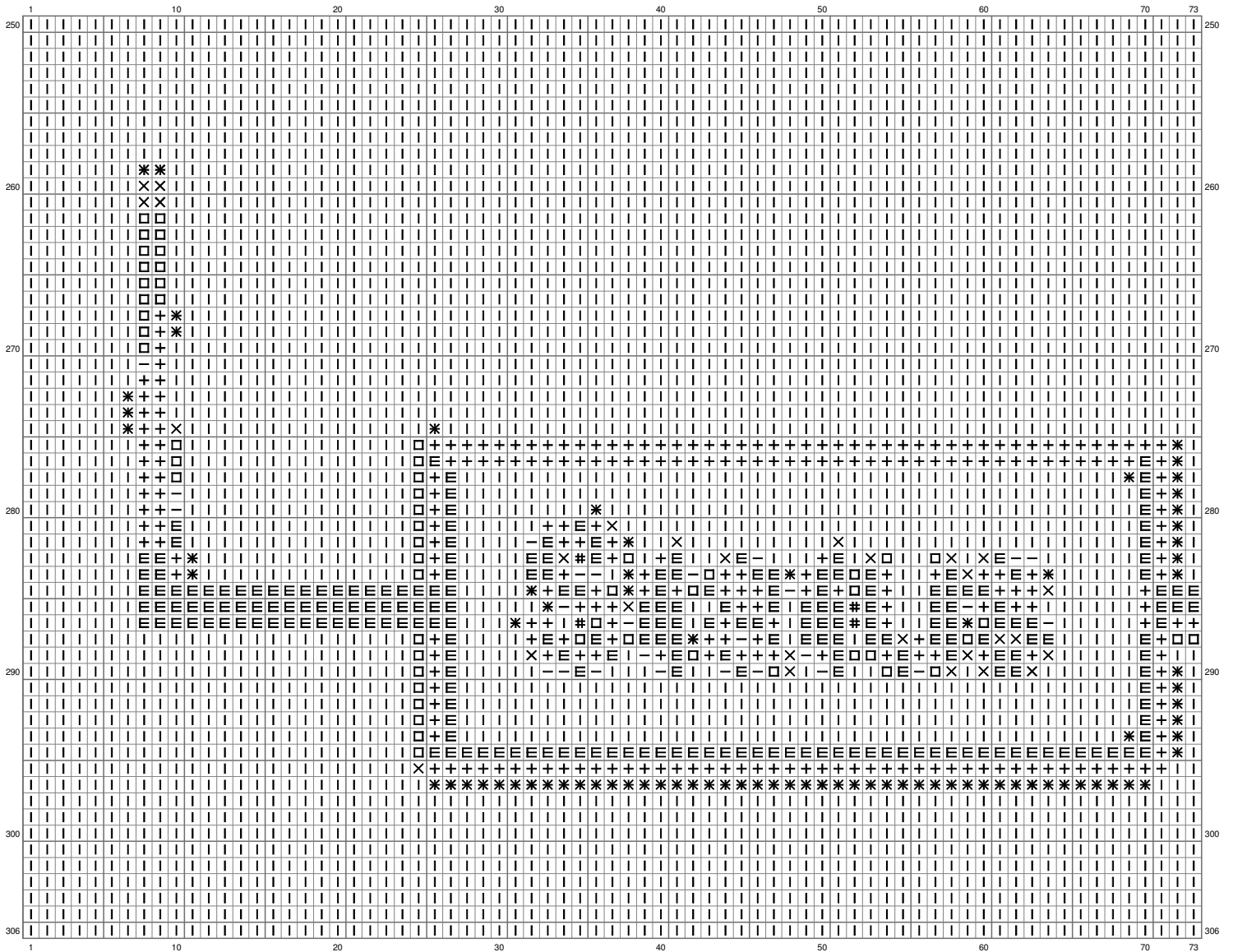
(This chart is printed using KG-Chart LE for Cross Stitch.)

Untitled

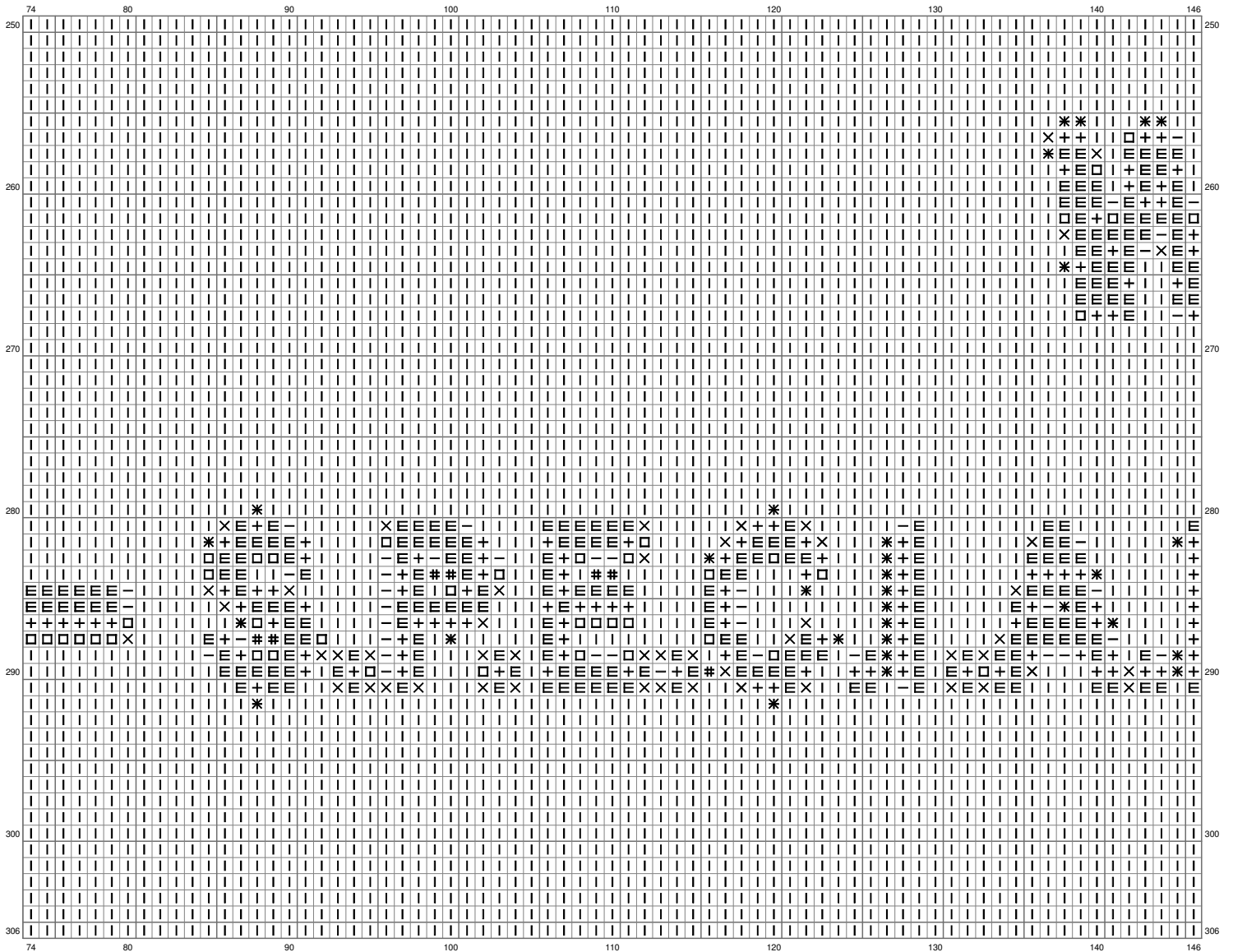


(This chart is printed using KG-Chart LE for Cross Stitch.)

Untitled

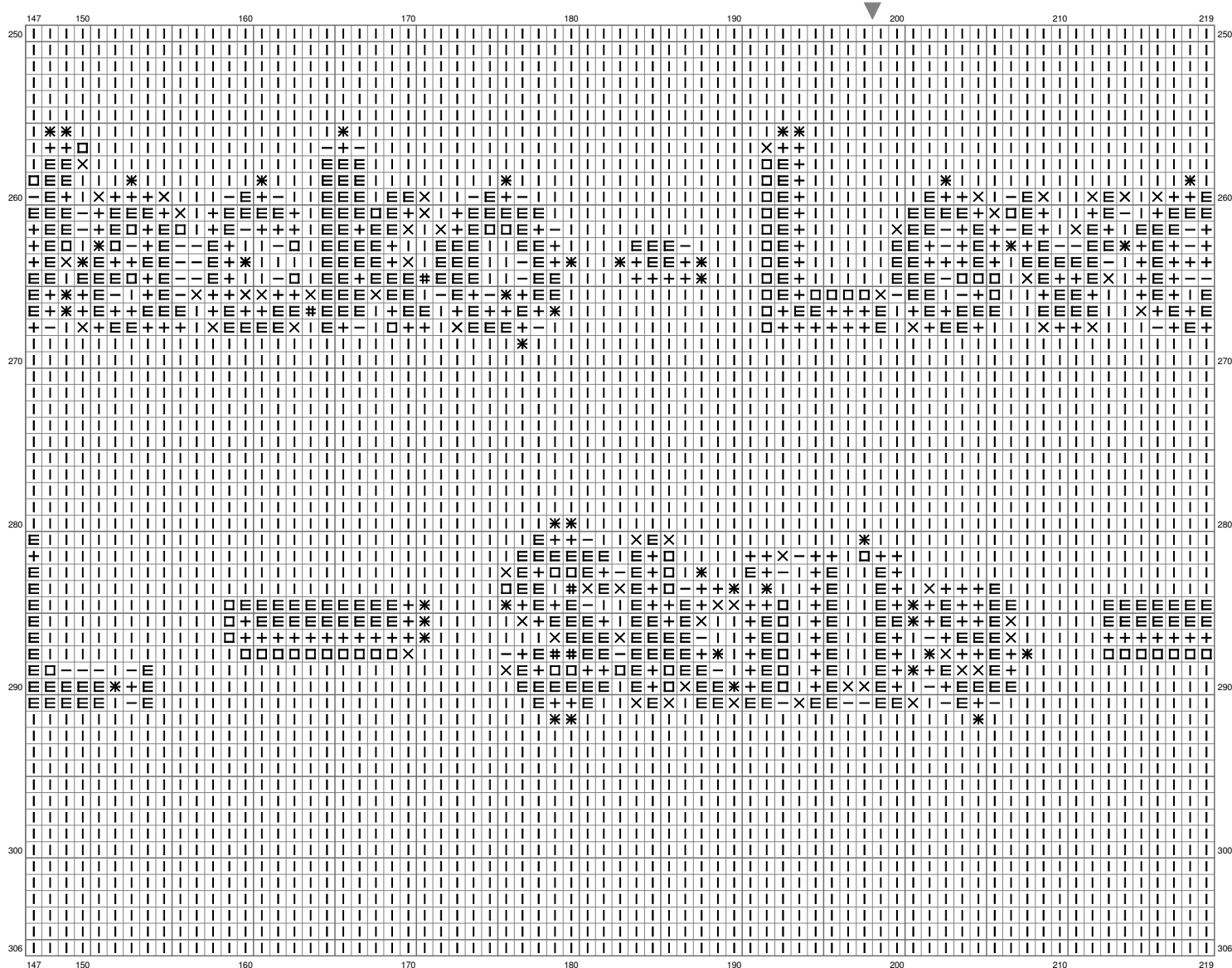


Untitled

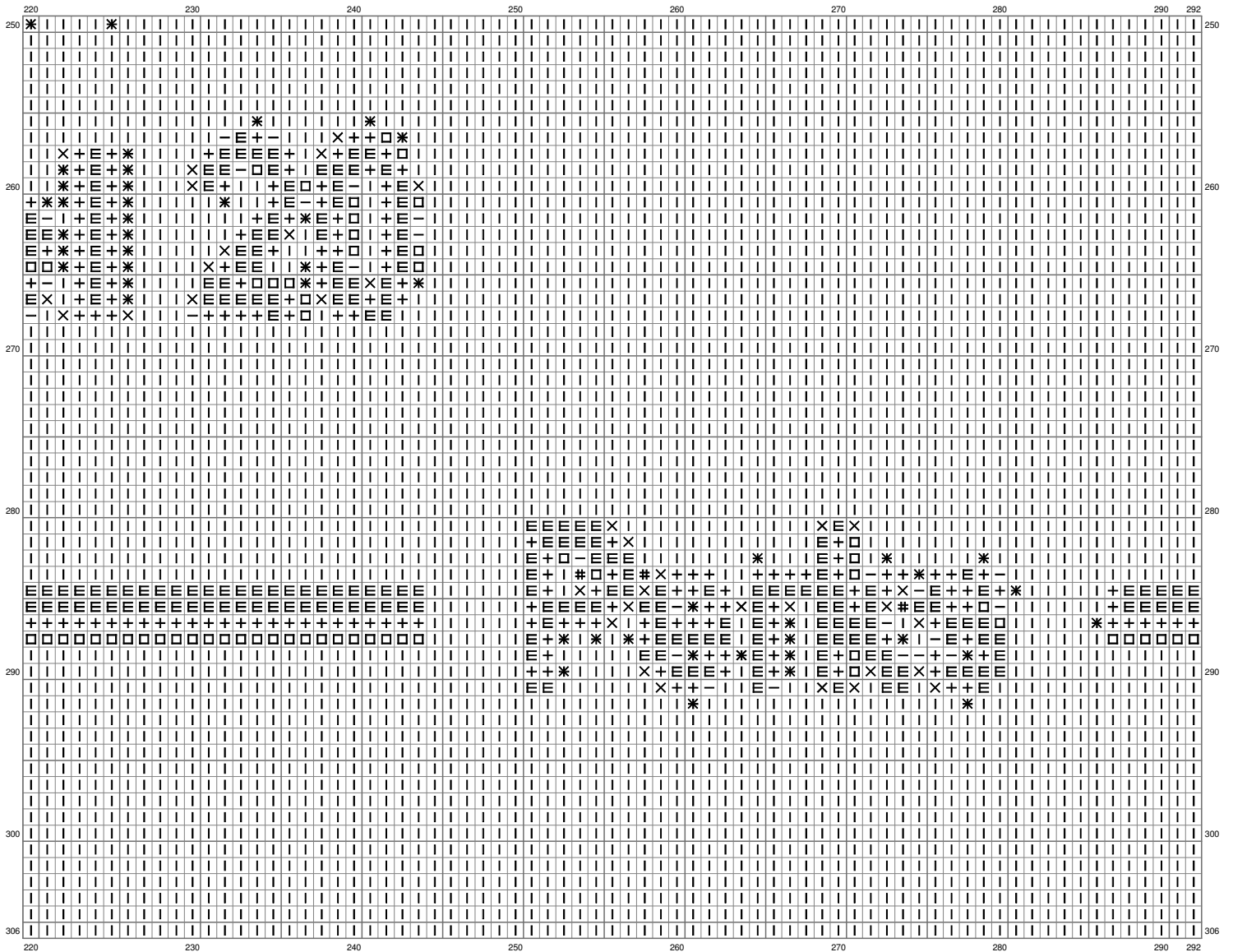


(This chart is printed using KG-Chart LE for Cross Stitch.)

Untitled

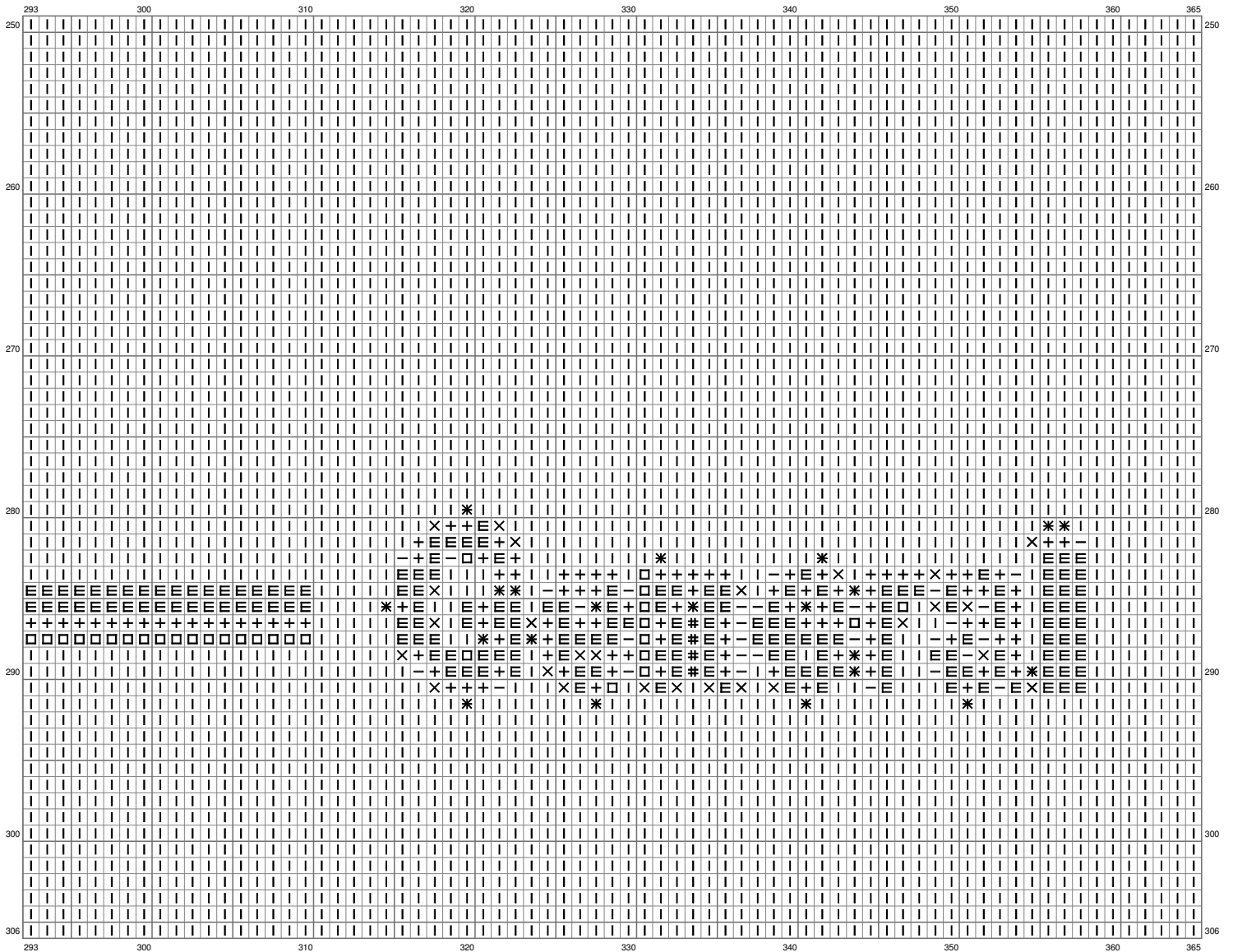


Untitled



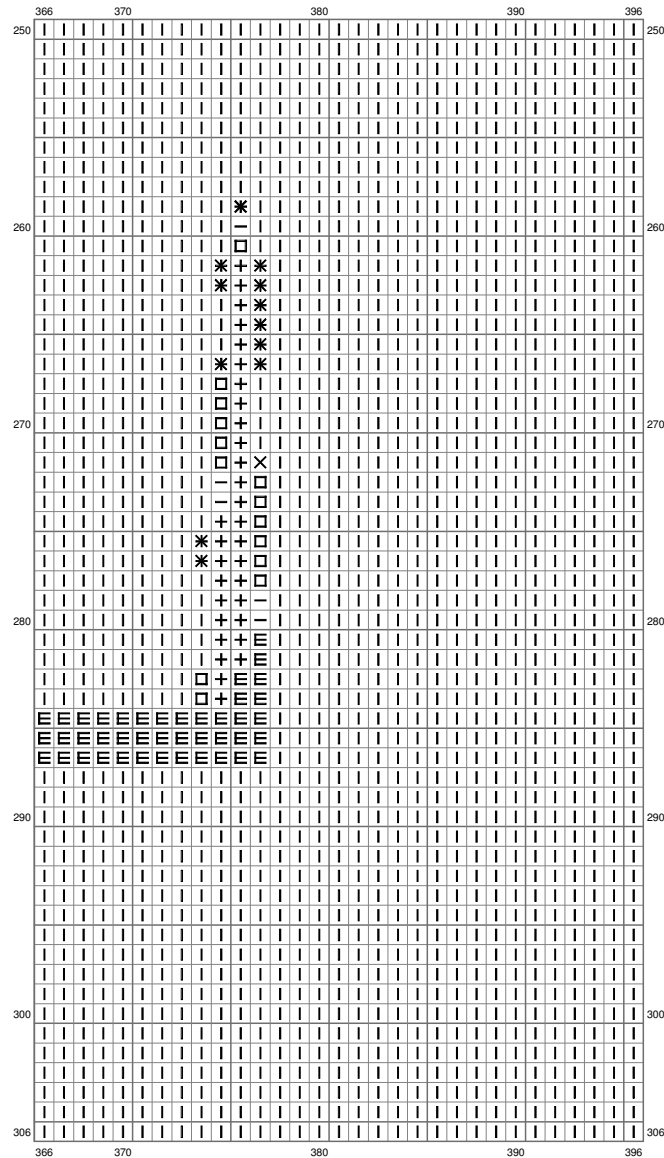
(This chart is printed using KG-Chart LE for Cross Stitch.)

Untitled



(This chart is printed using KG-Chart LE for Cross Stitch.)

Untitled



(This chart is printed using KG-Chart LE for Cross Stitch.)

Stitch Count:396w x 306h // Cloth:Aida Cloth's Color:White

Finished Size:111.76 cm x 86.36 cm (18 ct./inch) // Total 8 Colors

Color Table (DMC)

Cross Stitch

+	911	(4057 ct)
E	3851	(5456 ct)
□	320	(911 ct)
—	562	(849 ct)
X	163	(702 ct)
*	522	(1048 ct)
I	3022	(108085 ct)
#	414	(68 ct)