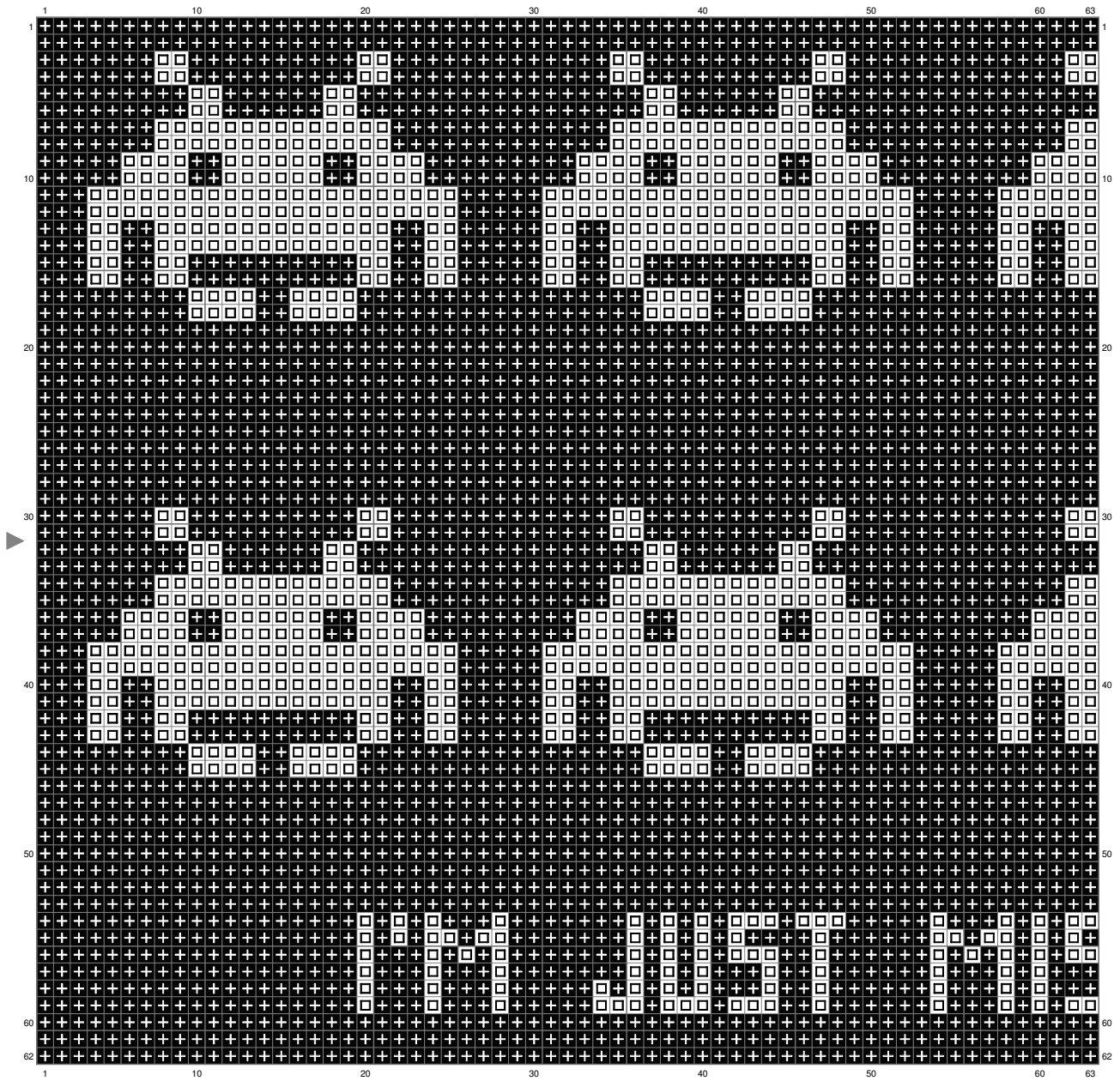
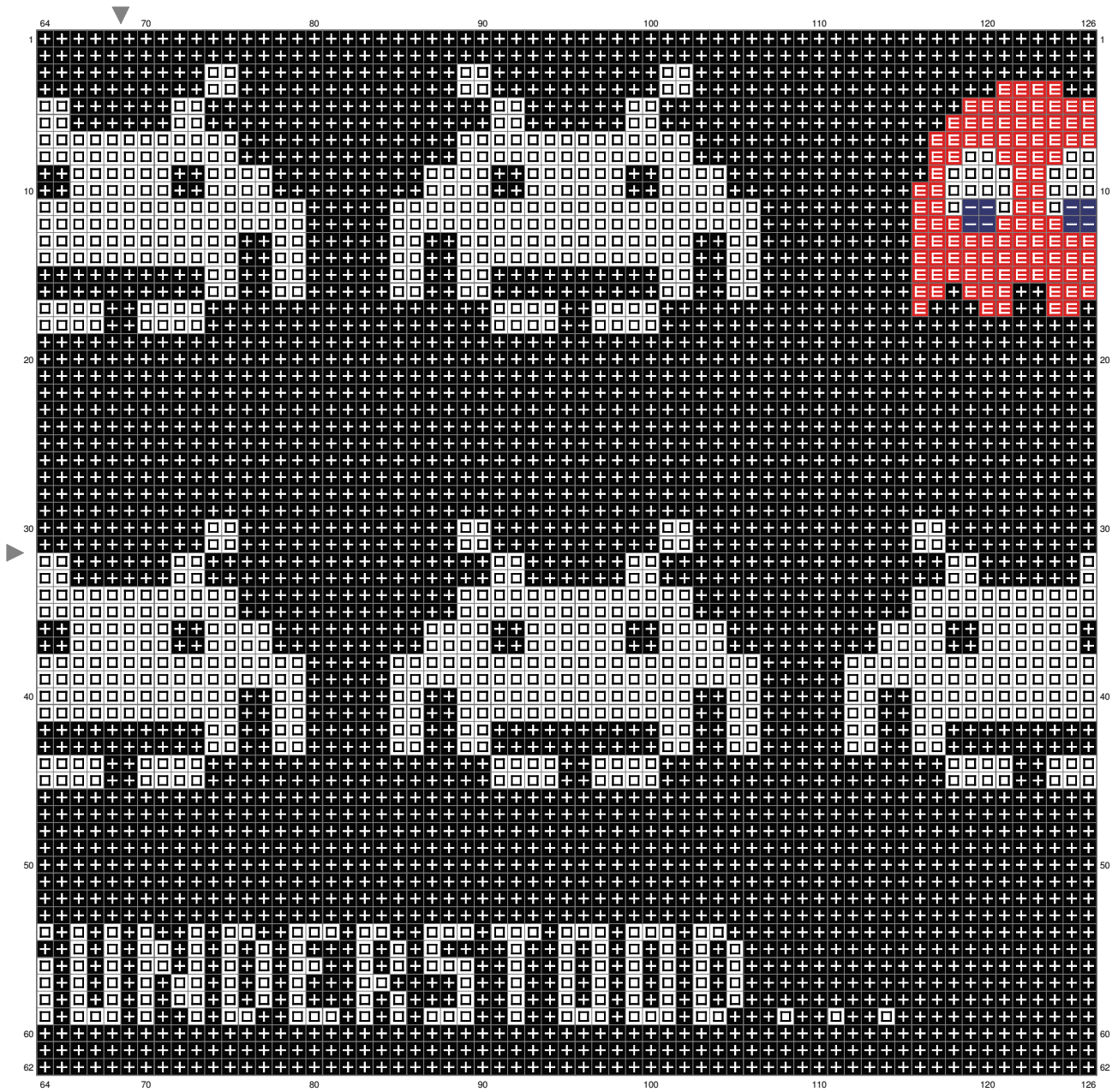


# Misunderstood

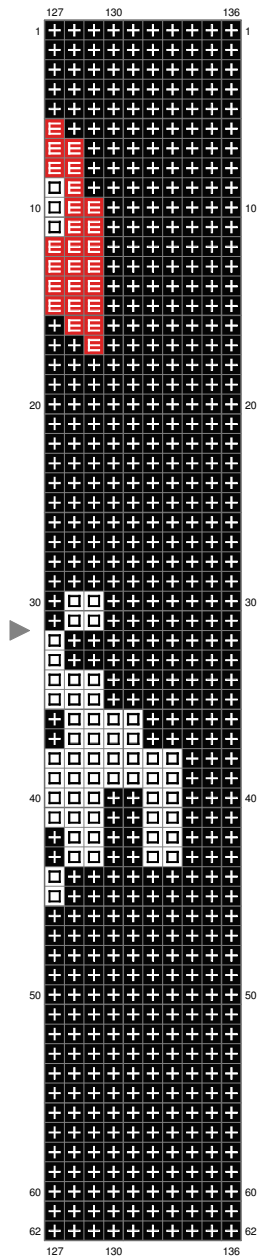


# Misunderstood



(This chart is printed using KG-Chart LE for Cross Stitch.)

# Misunderstood



(This chart is printed using KG-Chart LE for Cross Stitch.)

Stitch Count: 136w x 62h

Finished Size: 49.34 cm x 22.49 cm (14 ct./inch)




Cloth: Linen

Cloth's Color: White

# of colors: 4 Colors

## Color Table (DMC)

### Cross Stitch

	310	(6393 ct)
	349	(126 ct)
	B5200	(1905 ct)
	311	(8 ct)