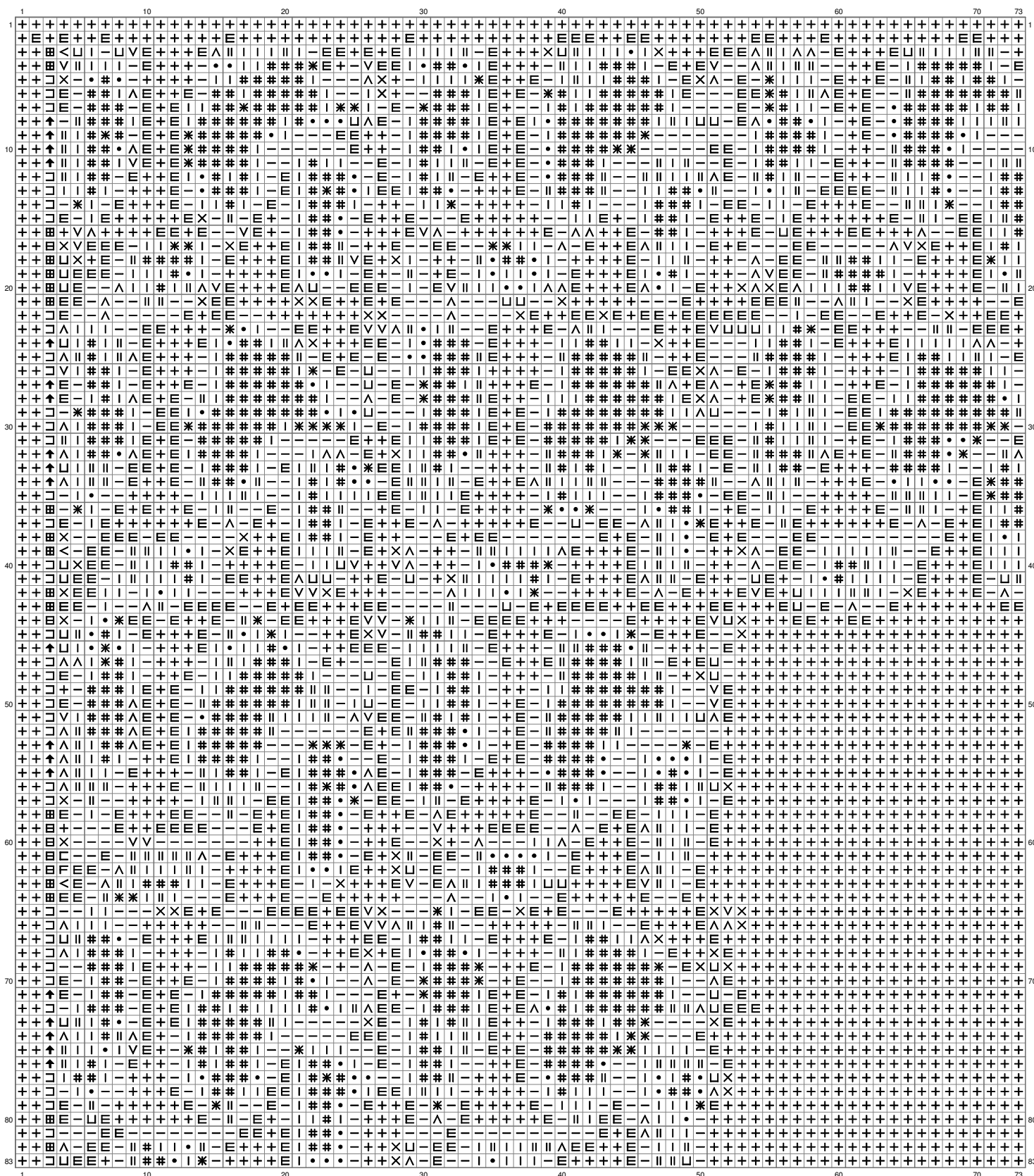
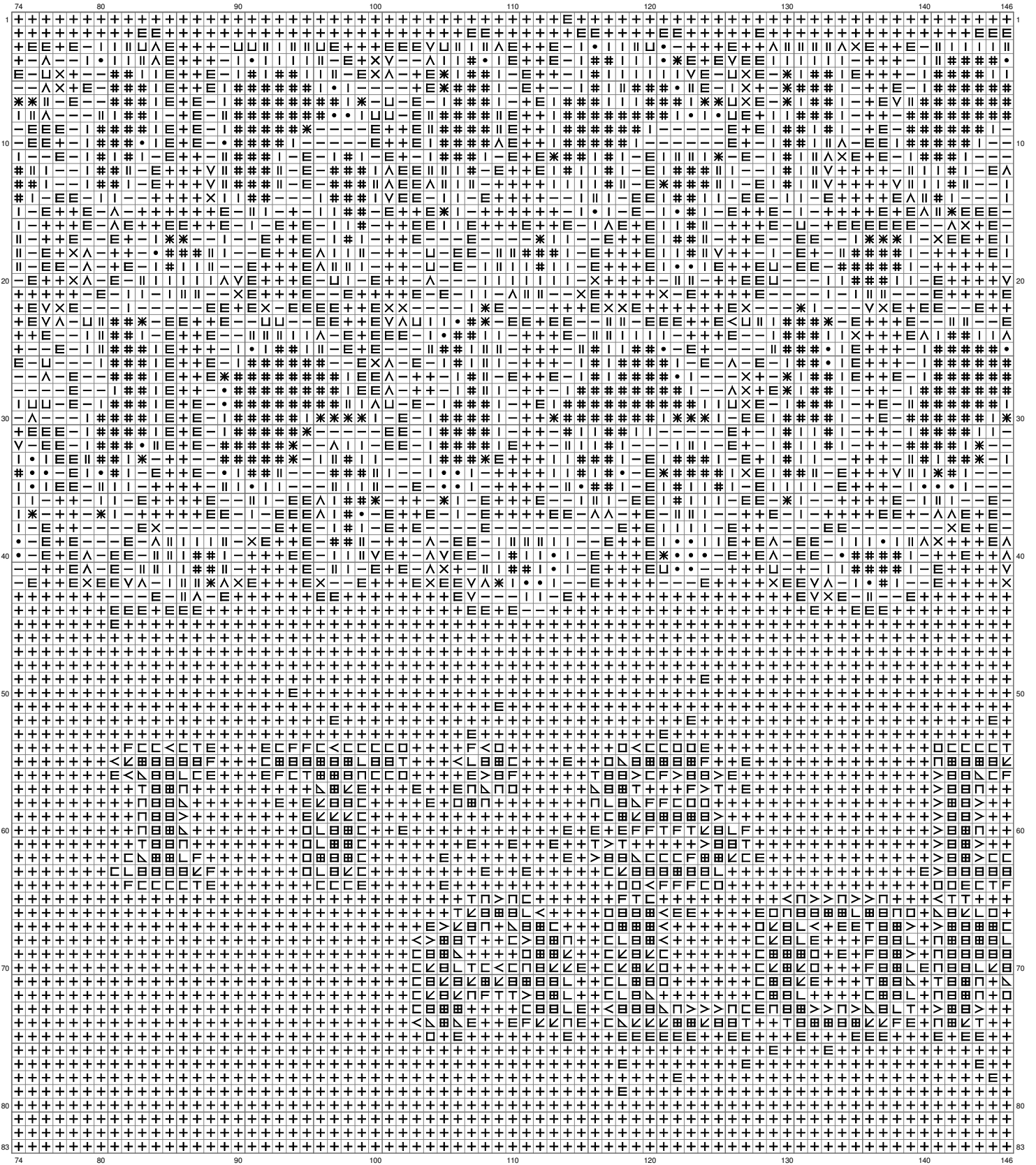


# Alone Large

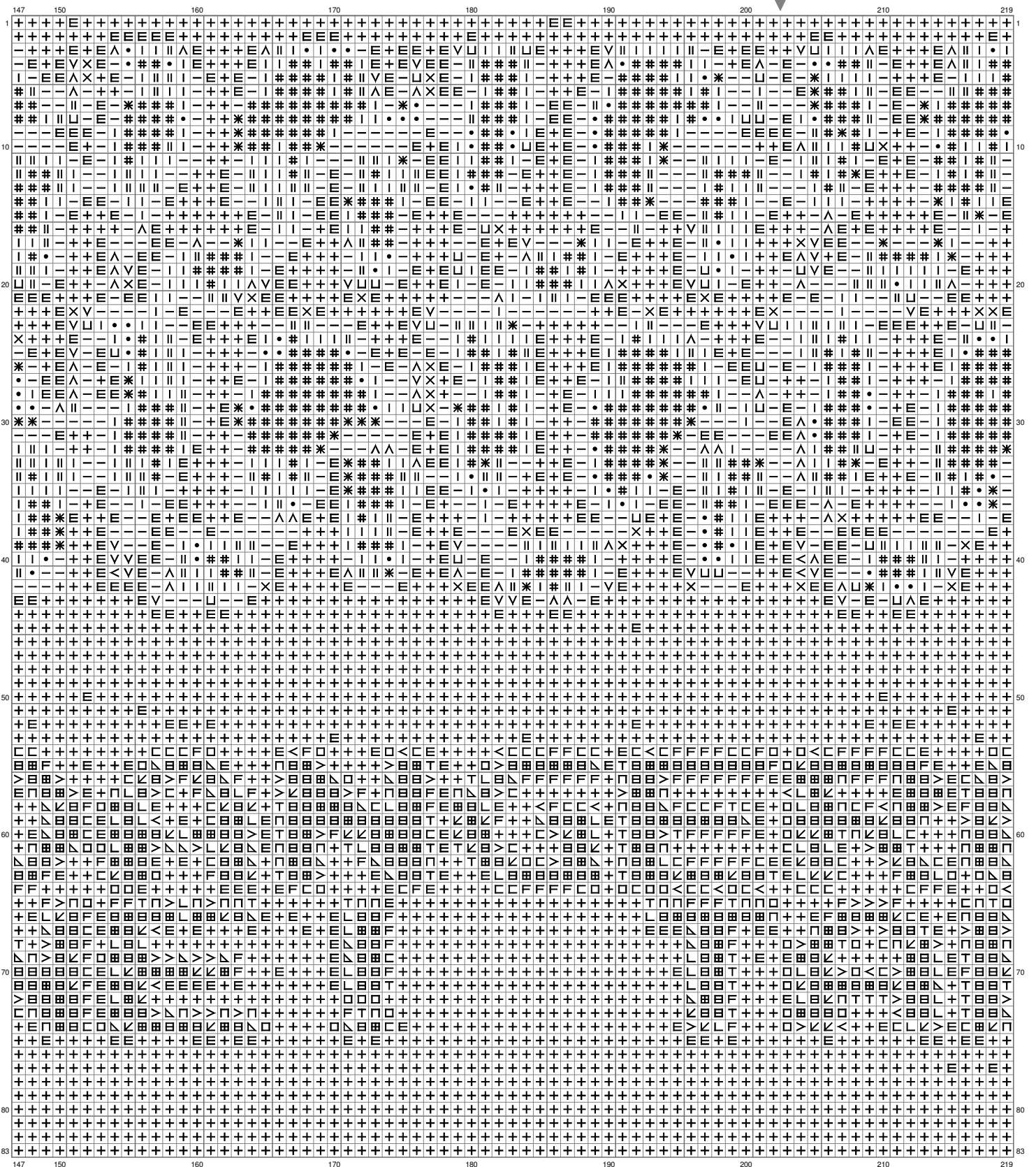


(This chart is printed using KG-Chart LE for Cross Stitch.)

# Alone Large

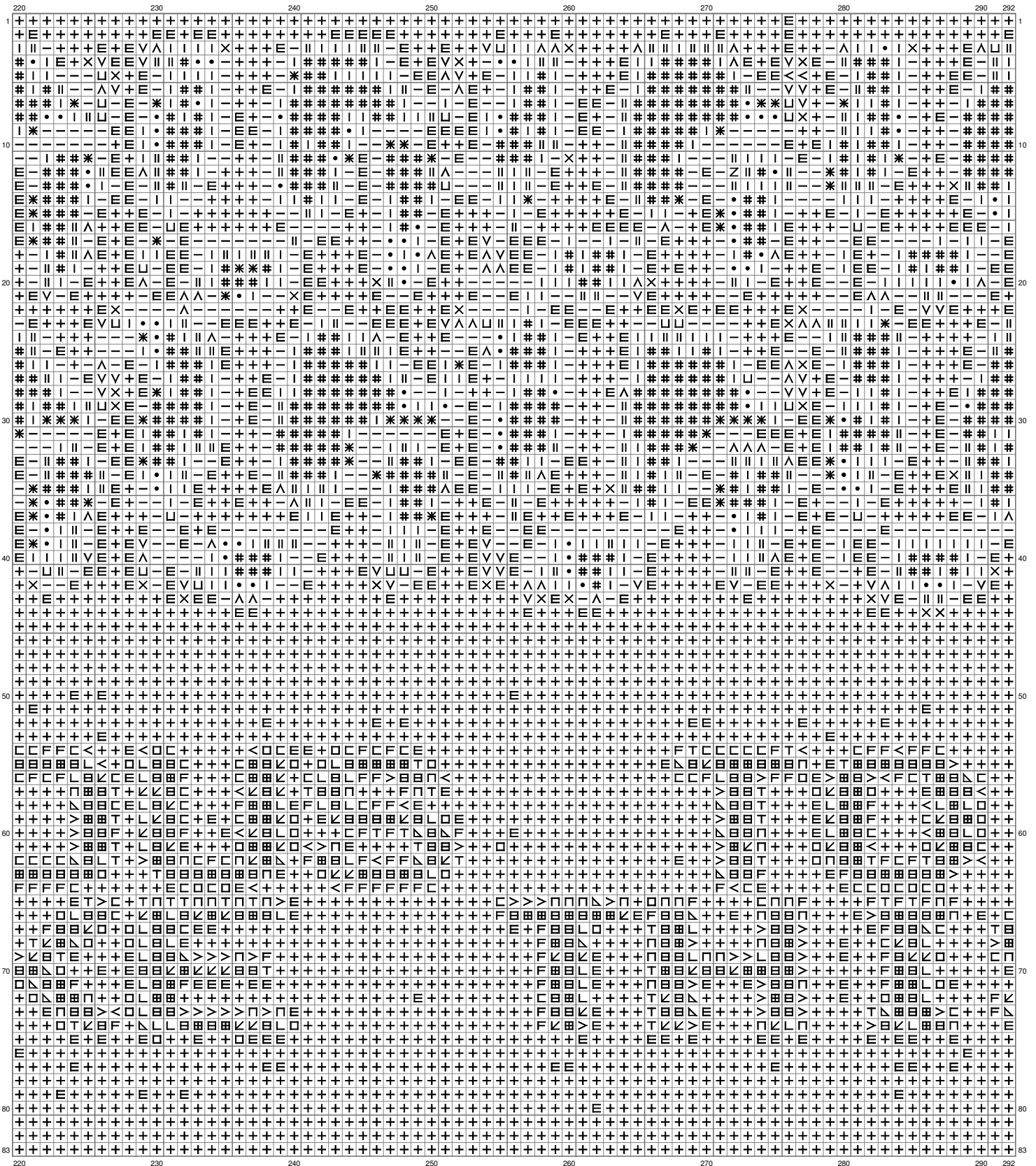


# Alone Large



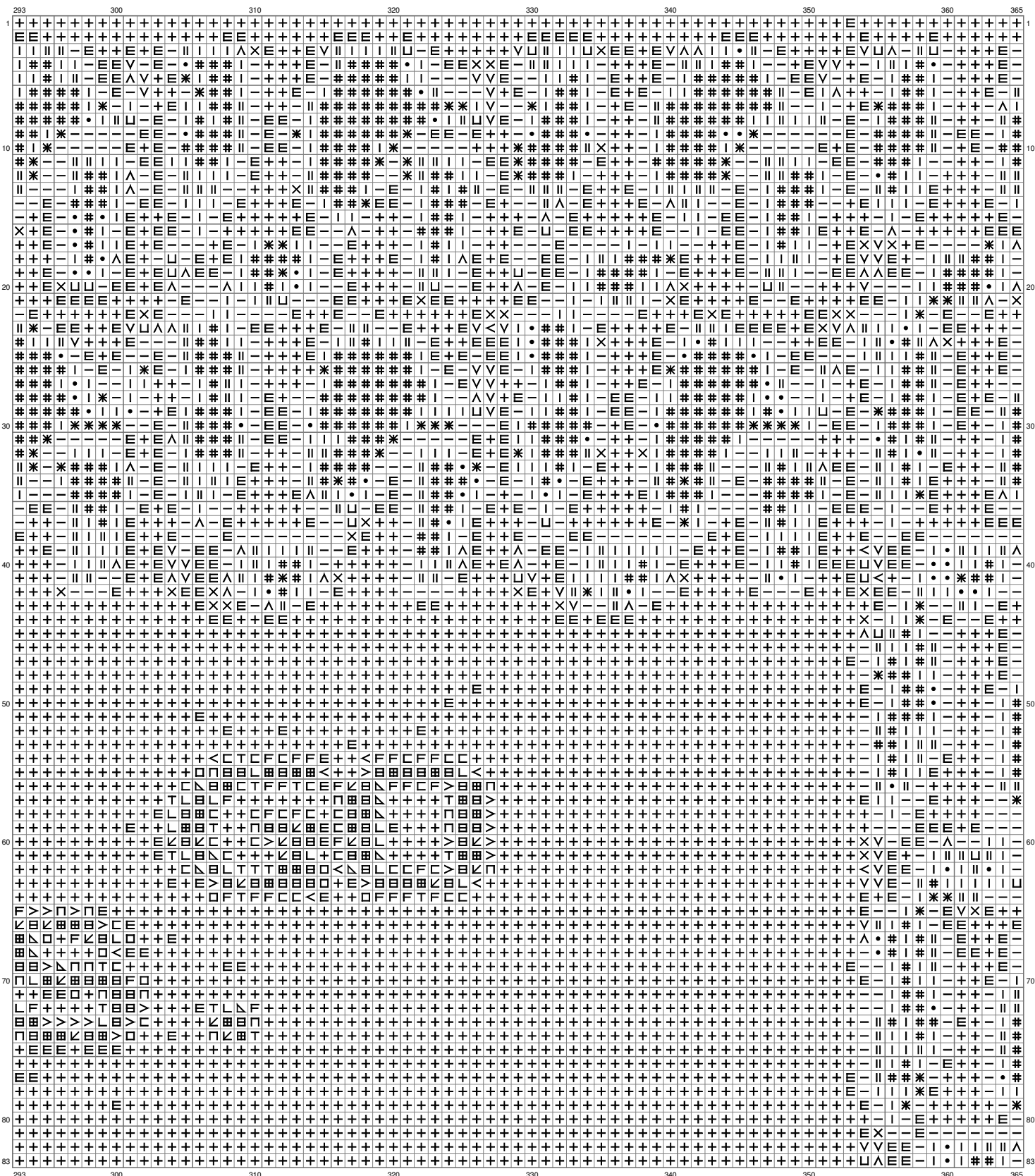
(This chart is printed using KG-Chart LE for Cross Stitch.)

## Alone Large

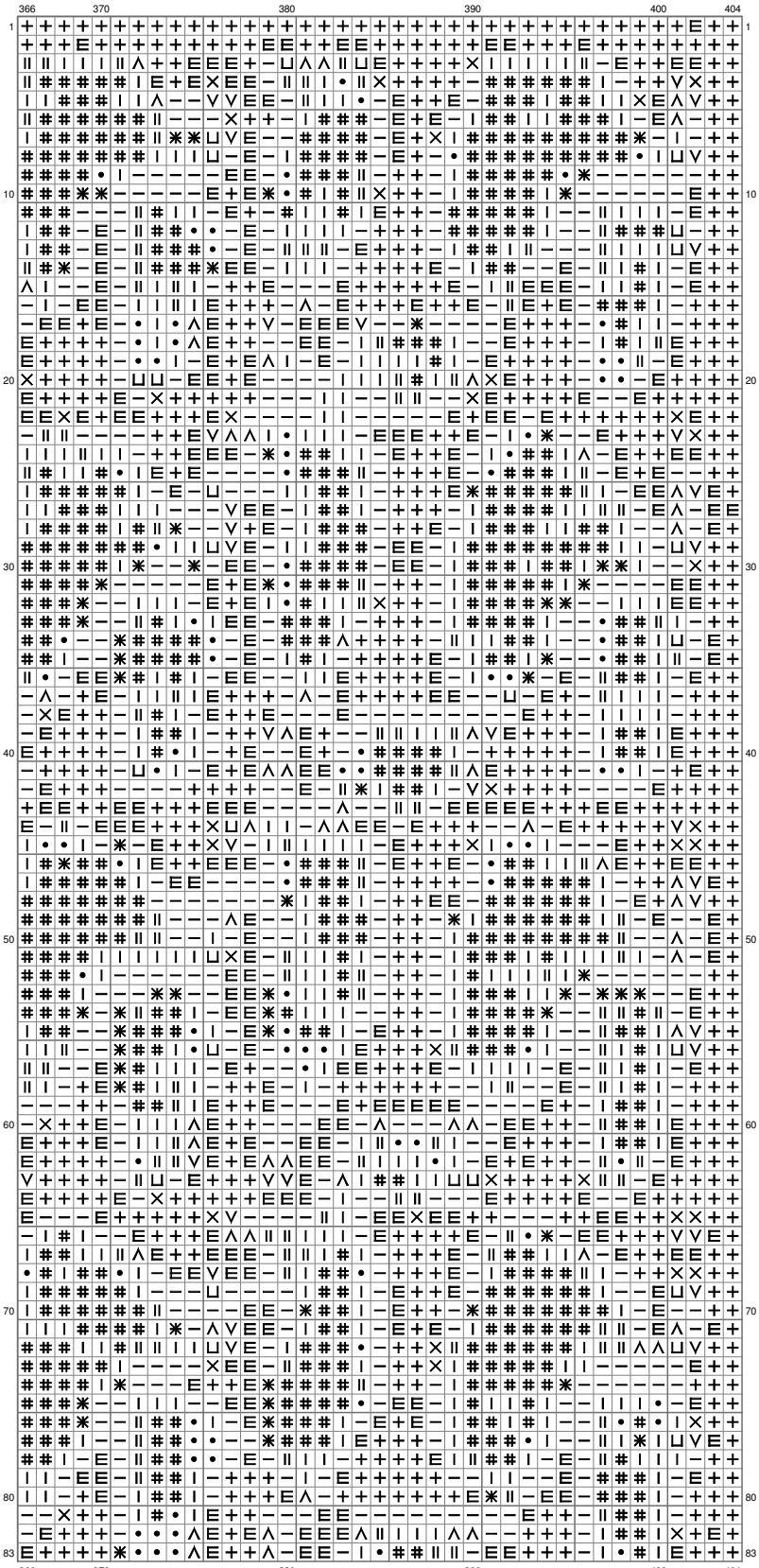


(This chart is printed using KG-Chart LE for Cross Stitch

# Alone Large

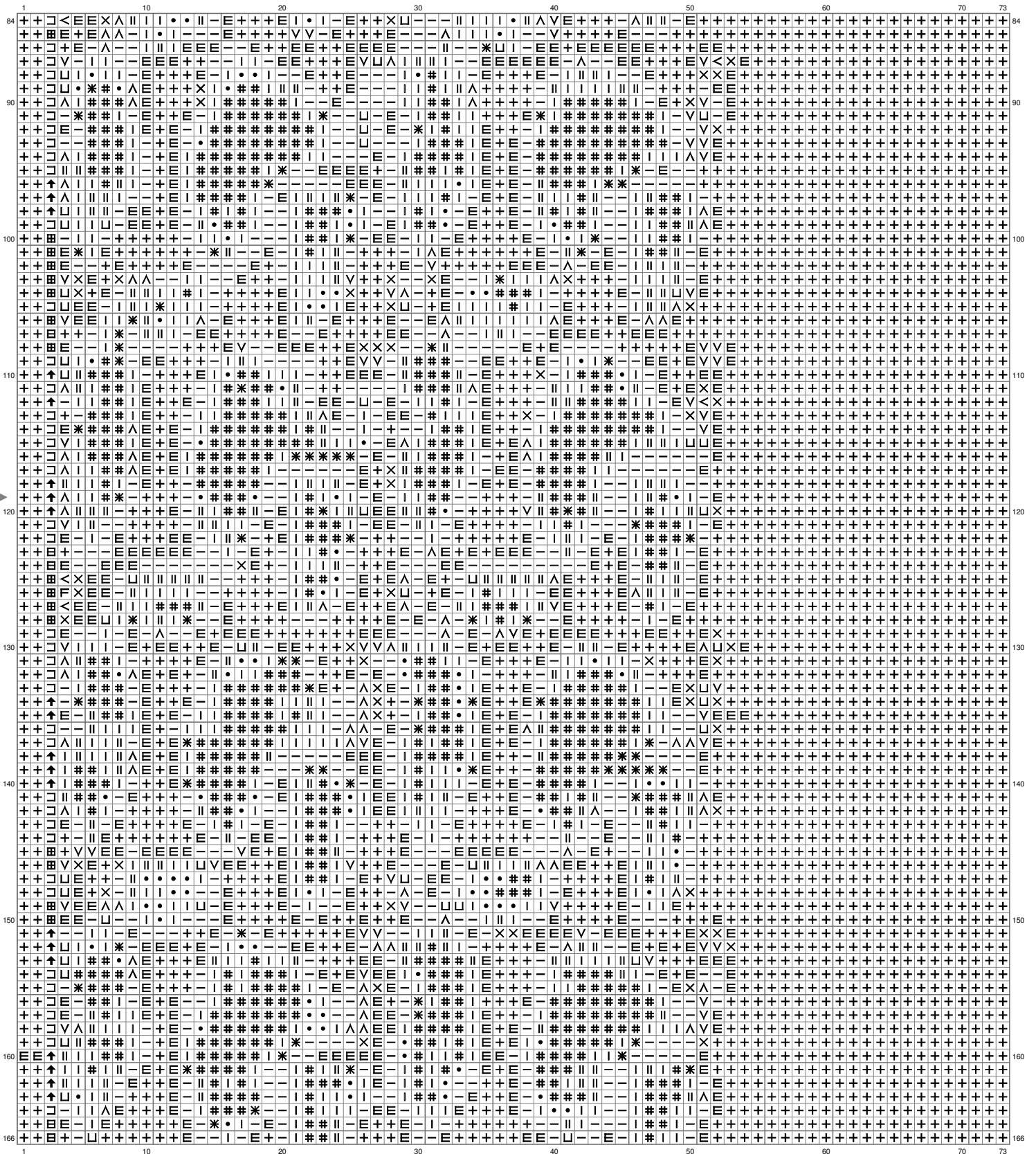


## Alone Large



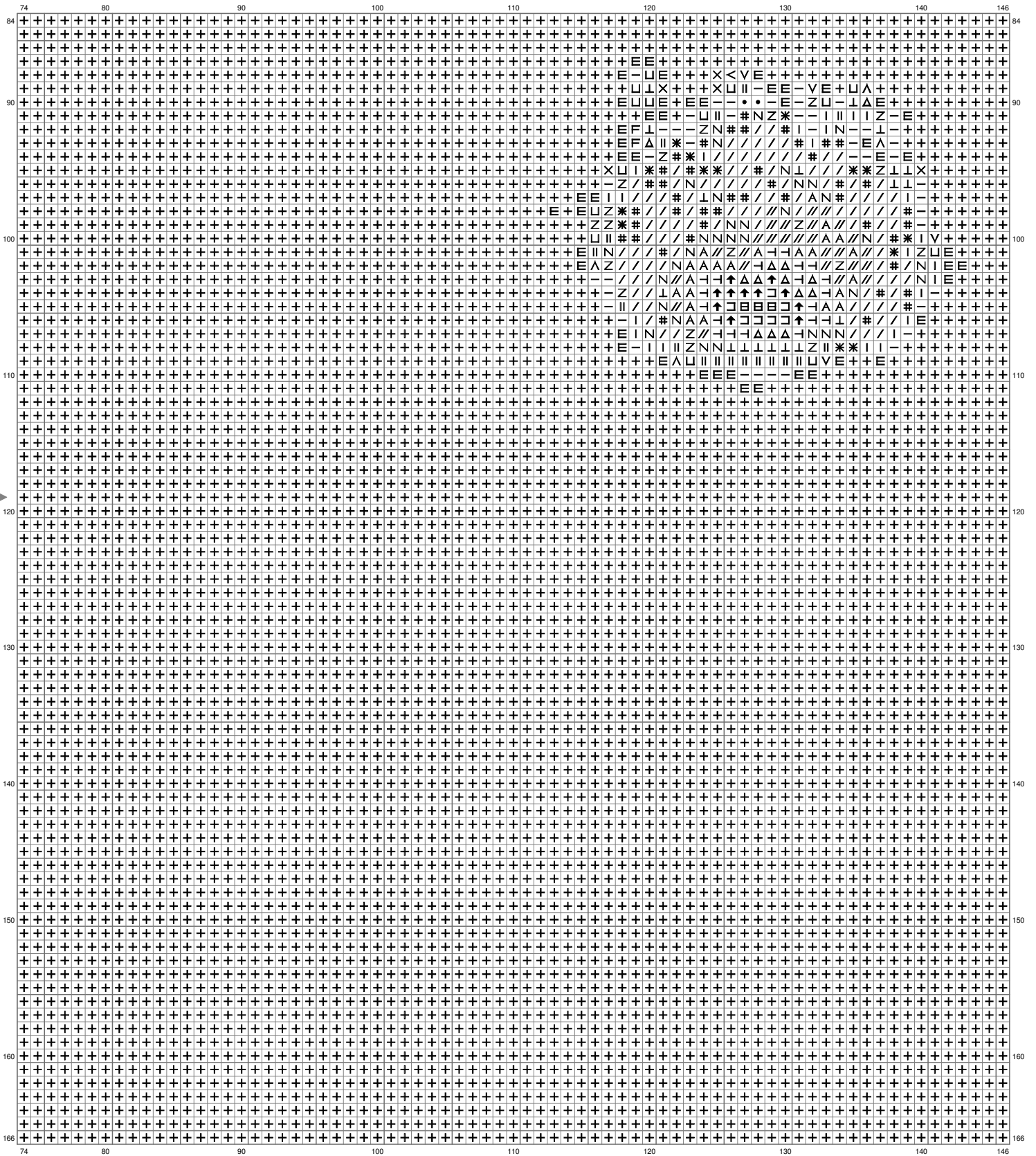
(This chart is printed using KG-Chart LE for Cross Stitch.

# Alone Large



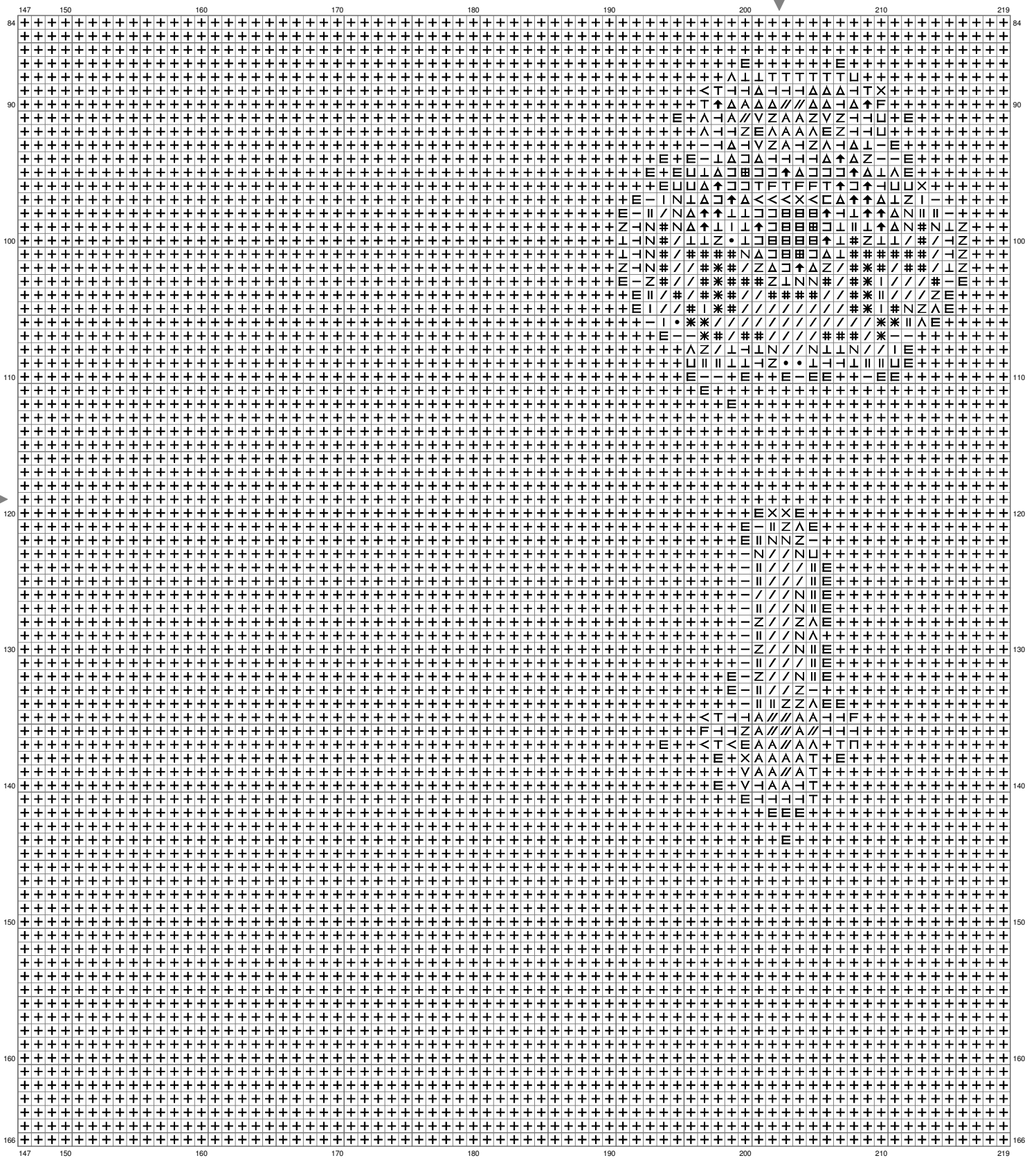
(This chart is printed using KG-Chart LE for Cross Stitch.)

# Alone Large



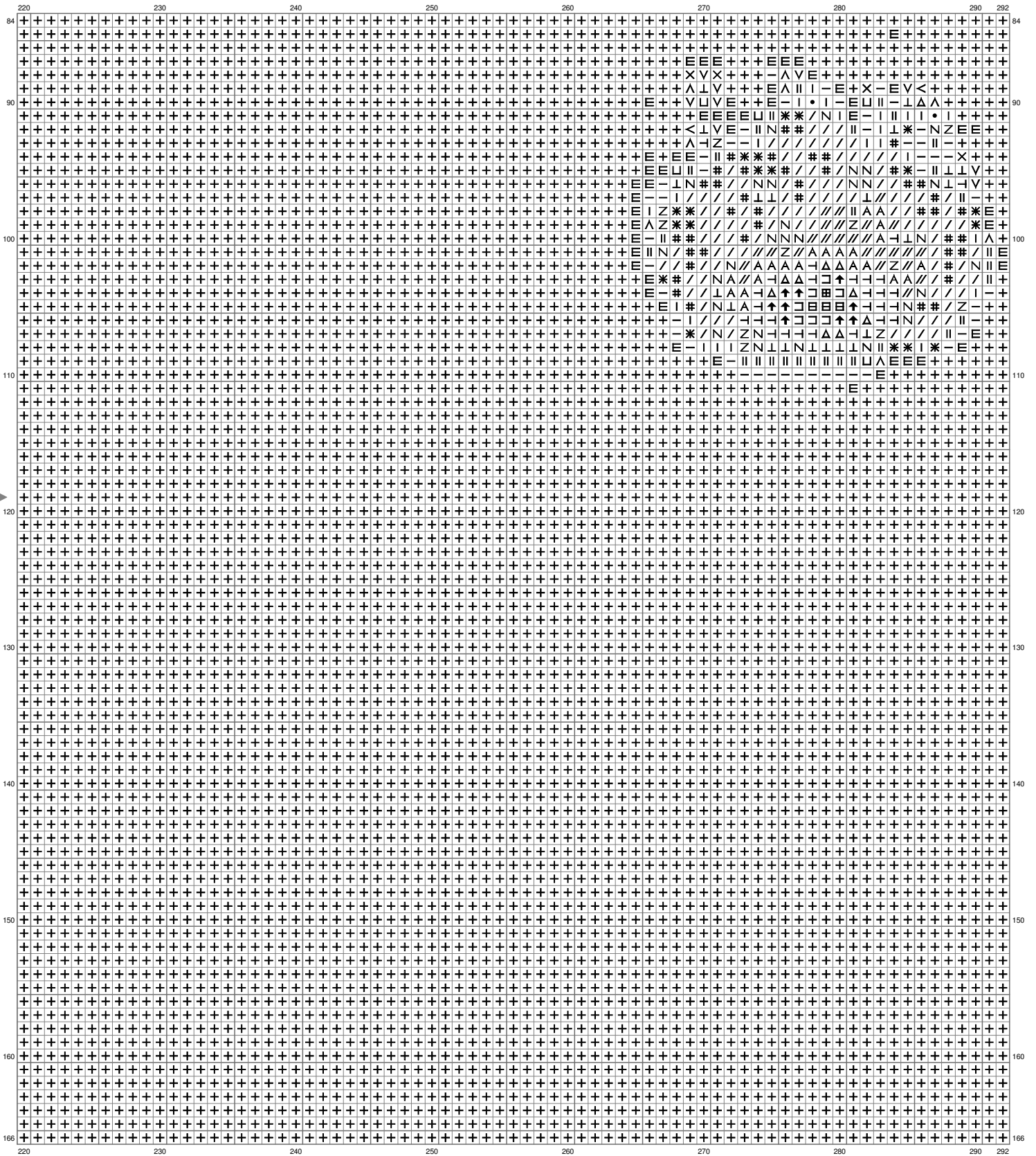


## Alone Large



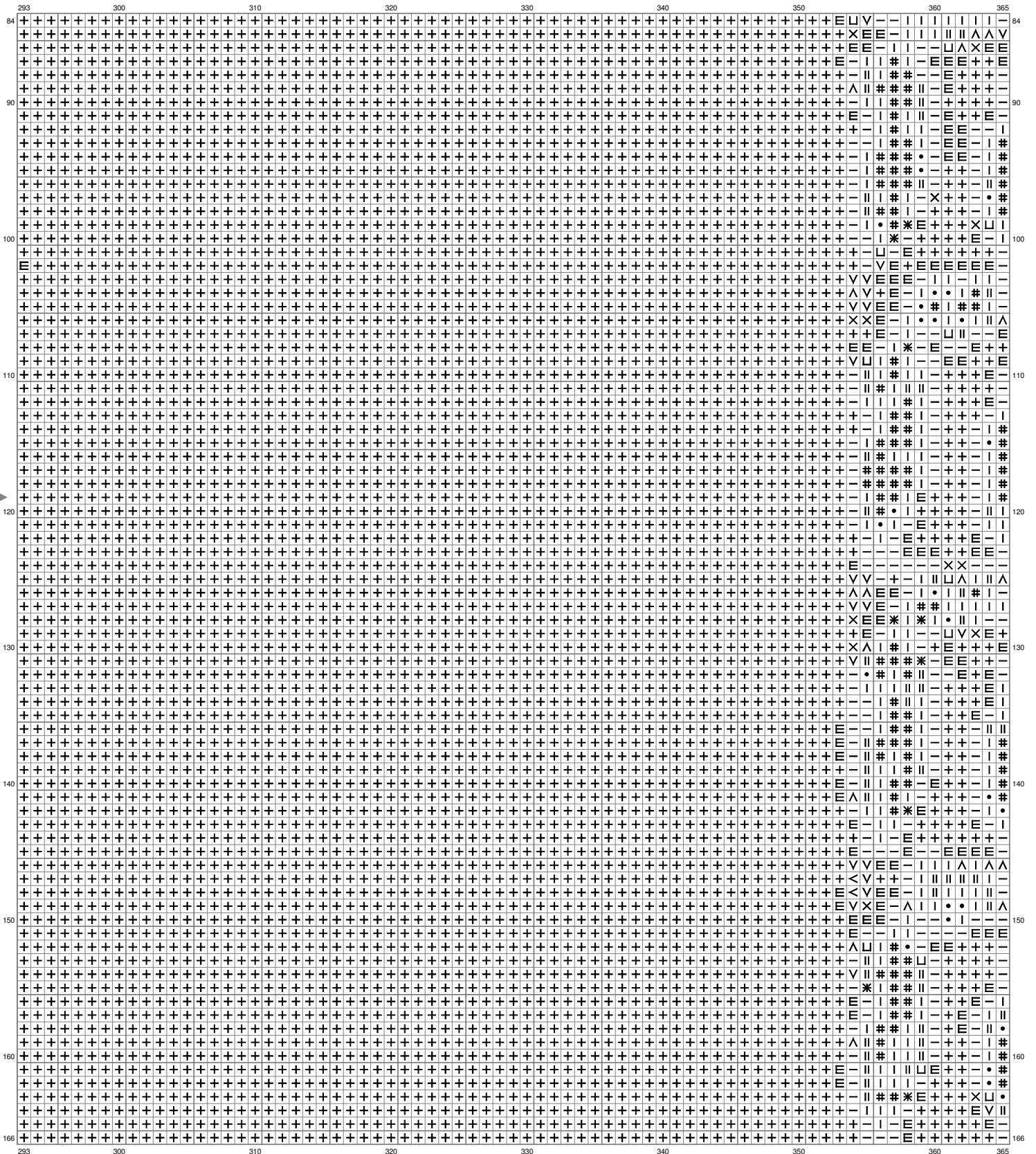
(This chart is printed using KG-Chart LE for Cross Stitch.)

# Alone Large



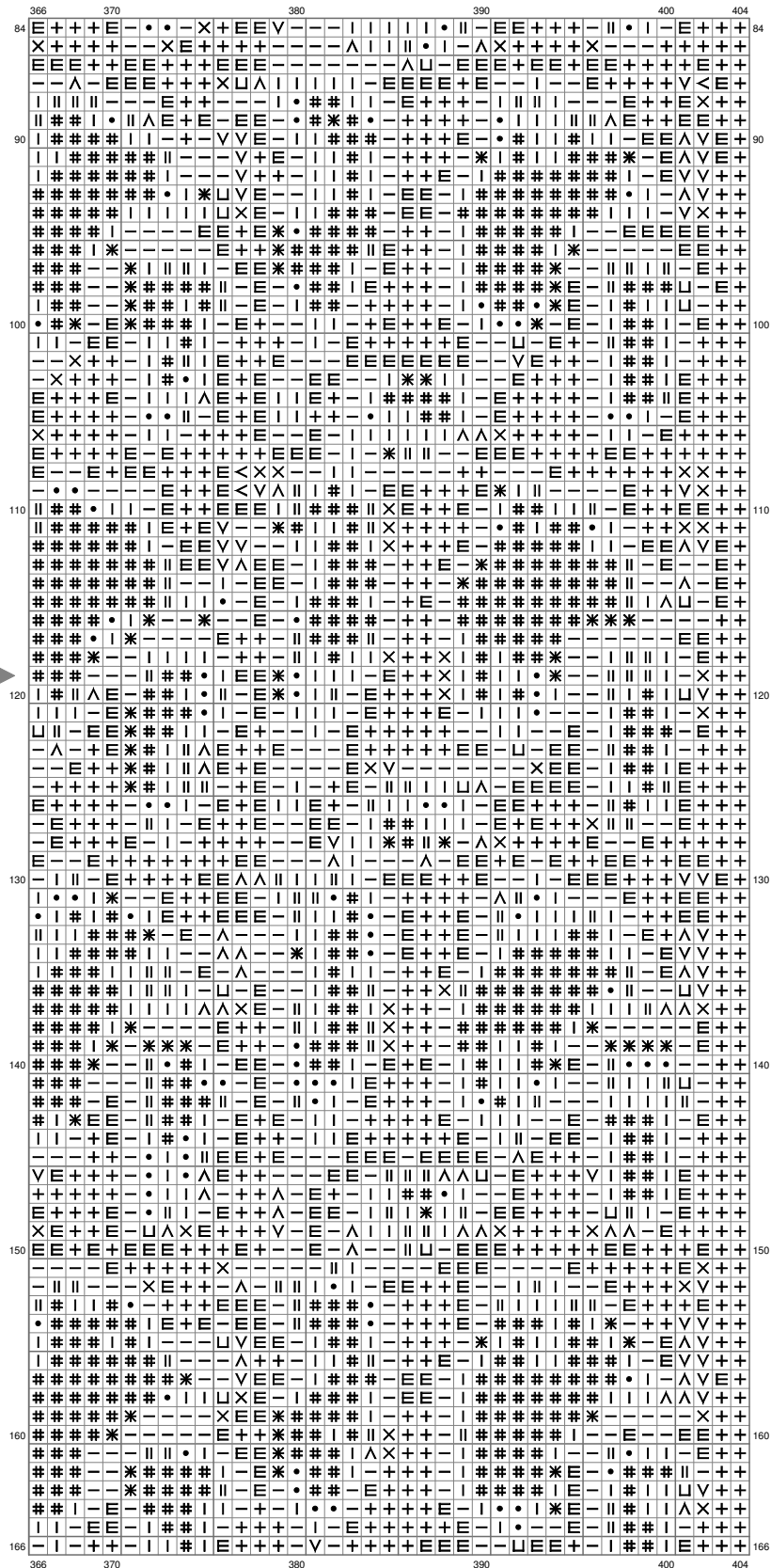
(This chart is printed using KG-Chart LE for Cross Stitch.)

## Alone Large



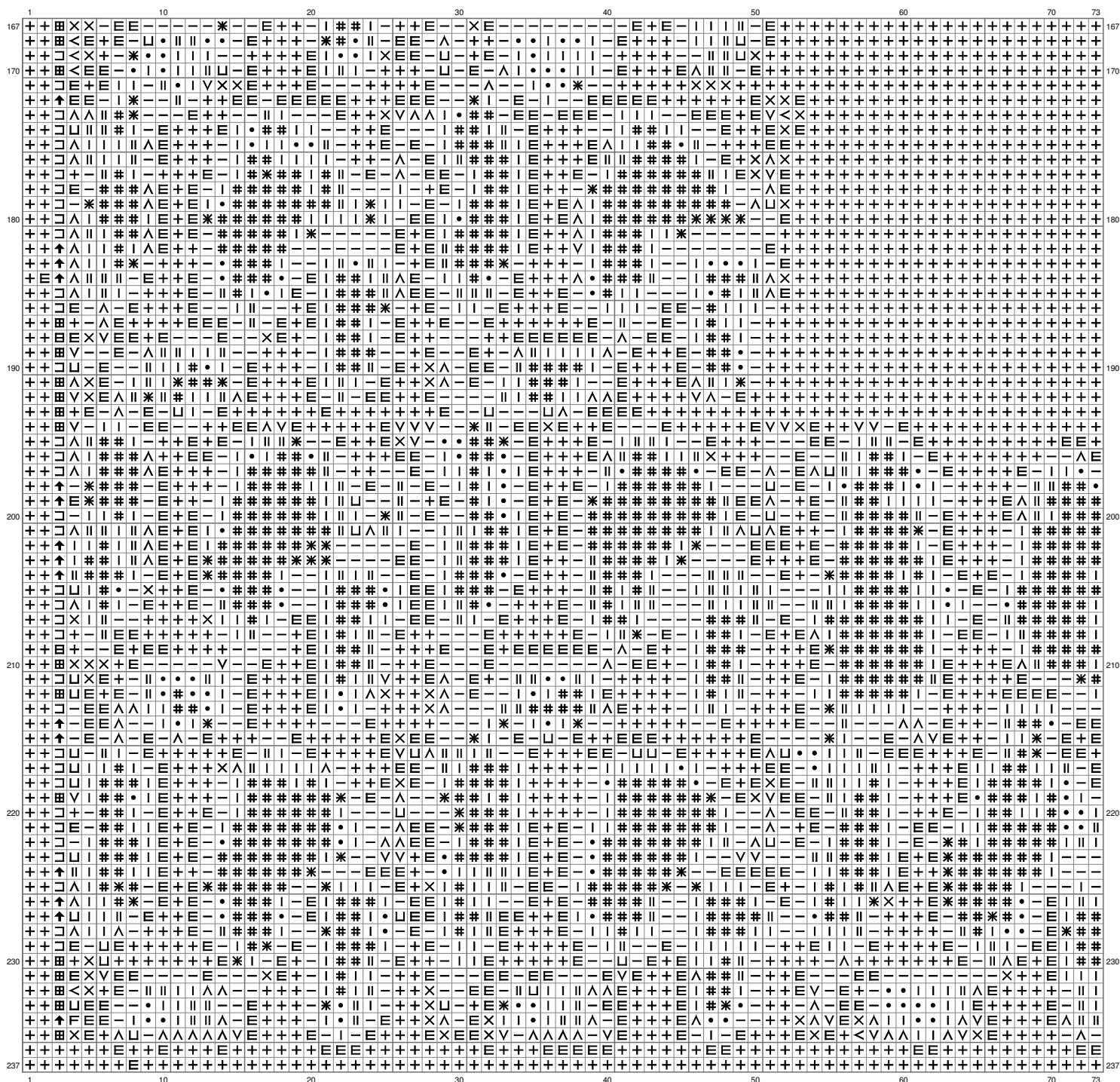
(This chart is printed using KG-Chart LE for Cross Stitch.)

# Alone Large



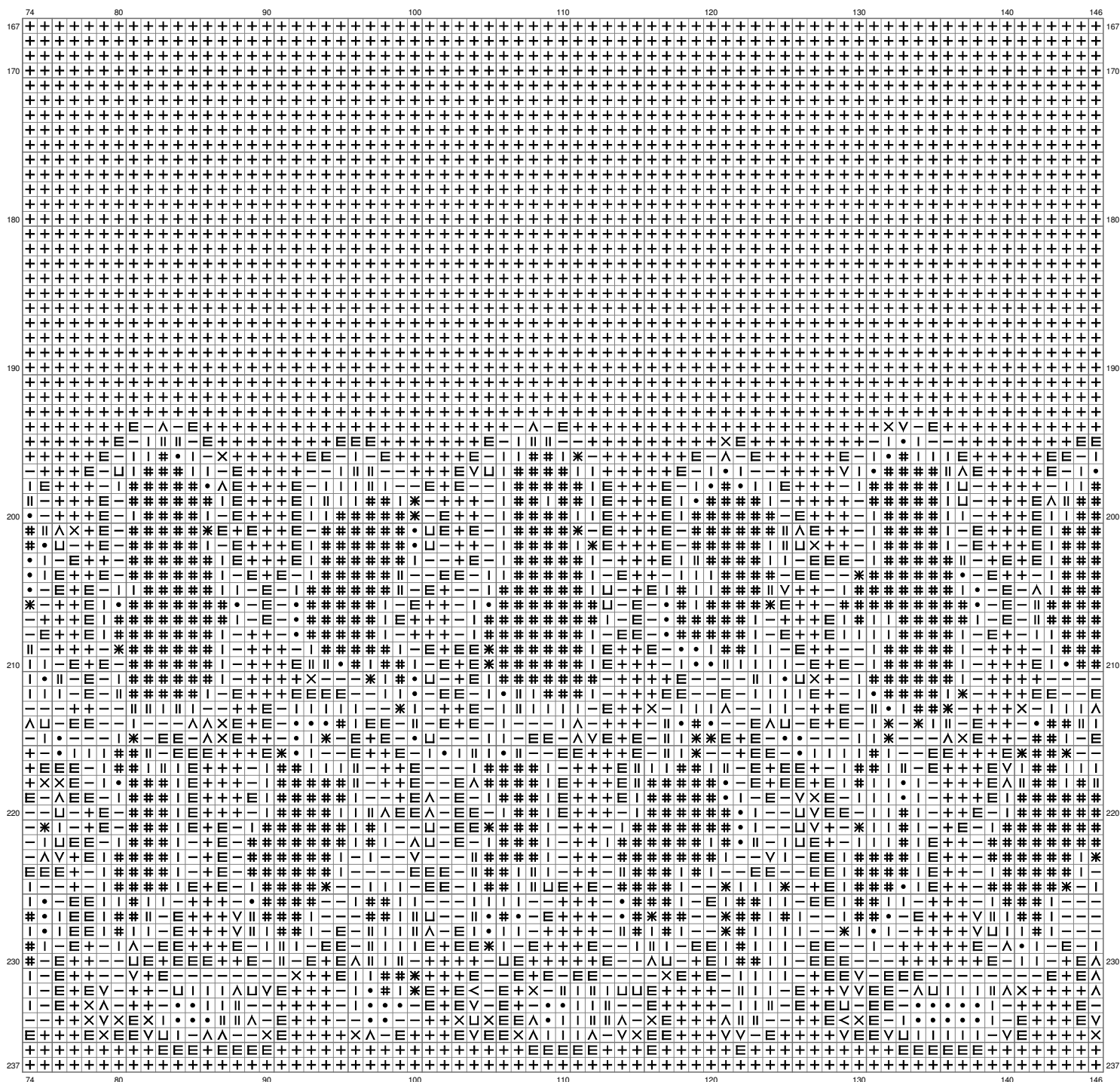
(This chart is printed using KG-Chart LE for Cross Stitch.)

# Alone Large

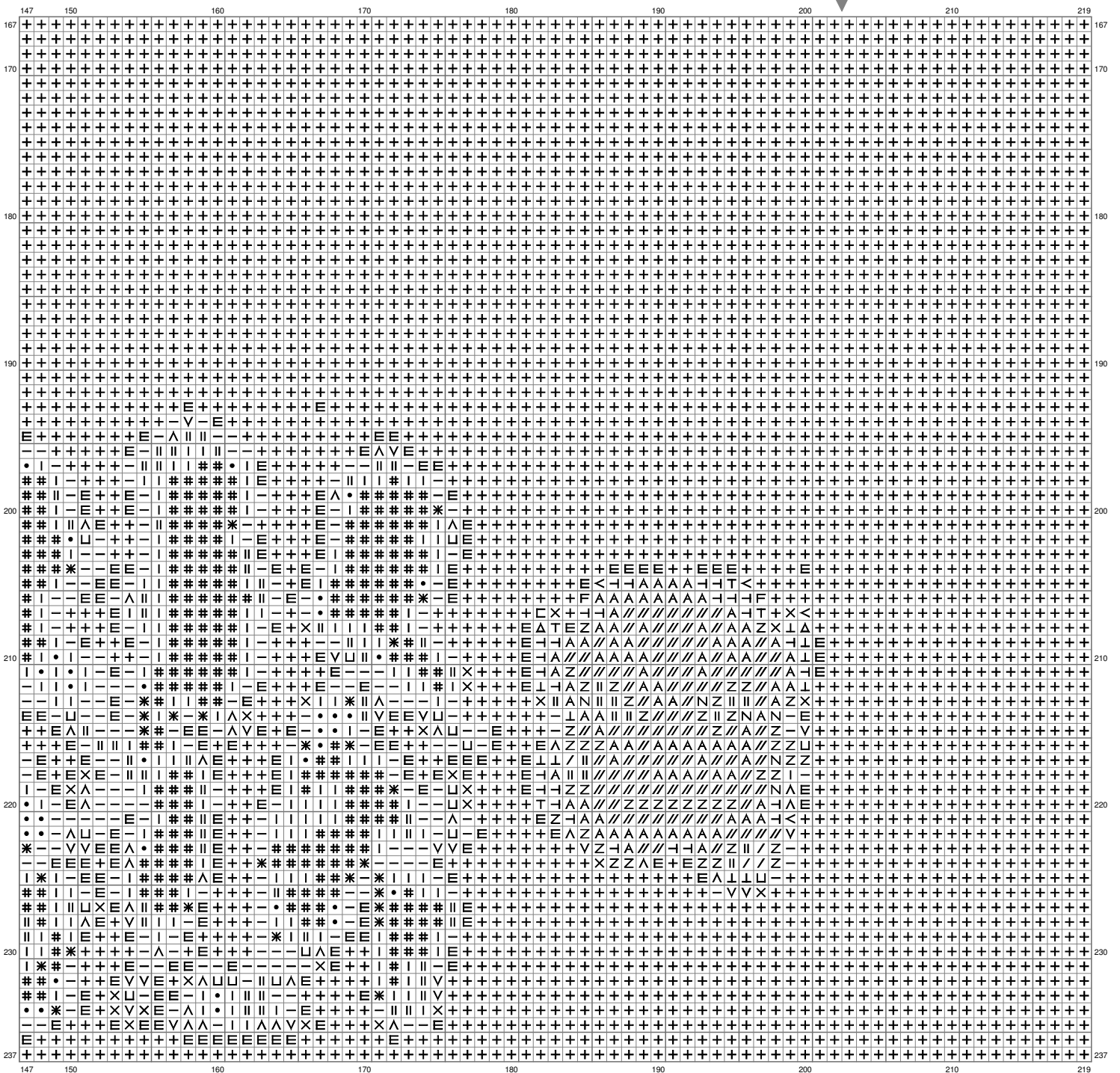


(This chart is printed using KG-Chart LE for Cross Stitch.)

# Alone Large

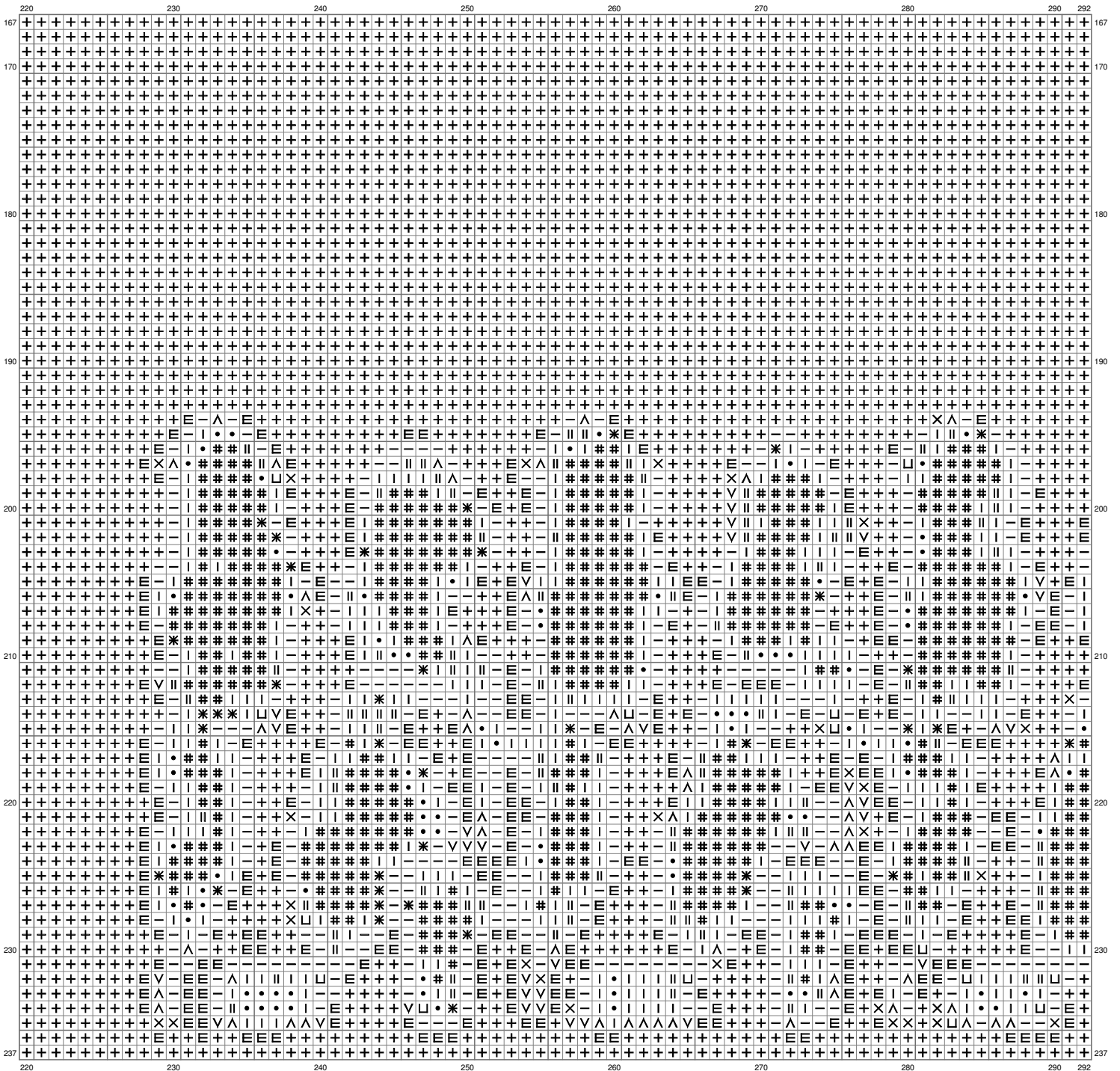


# Alone Large



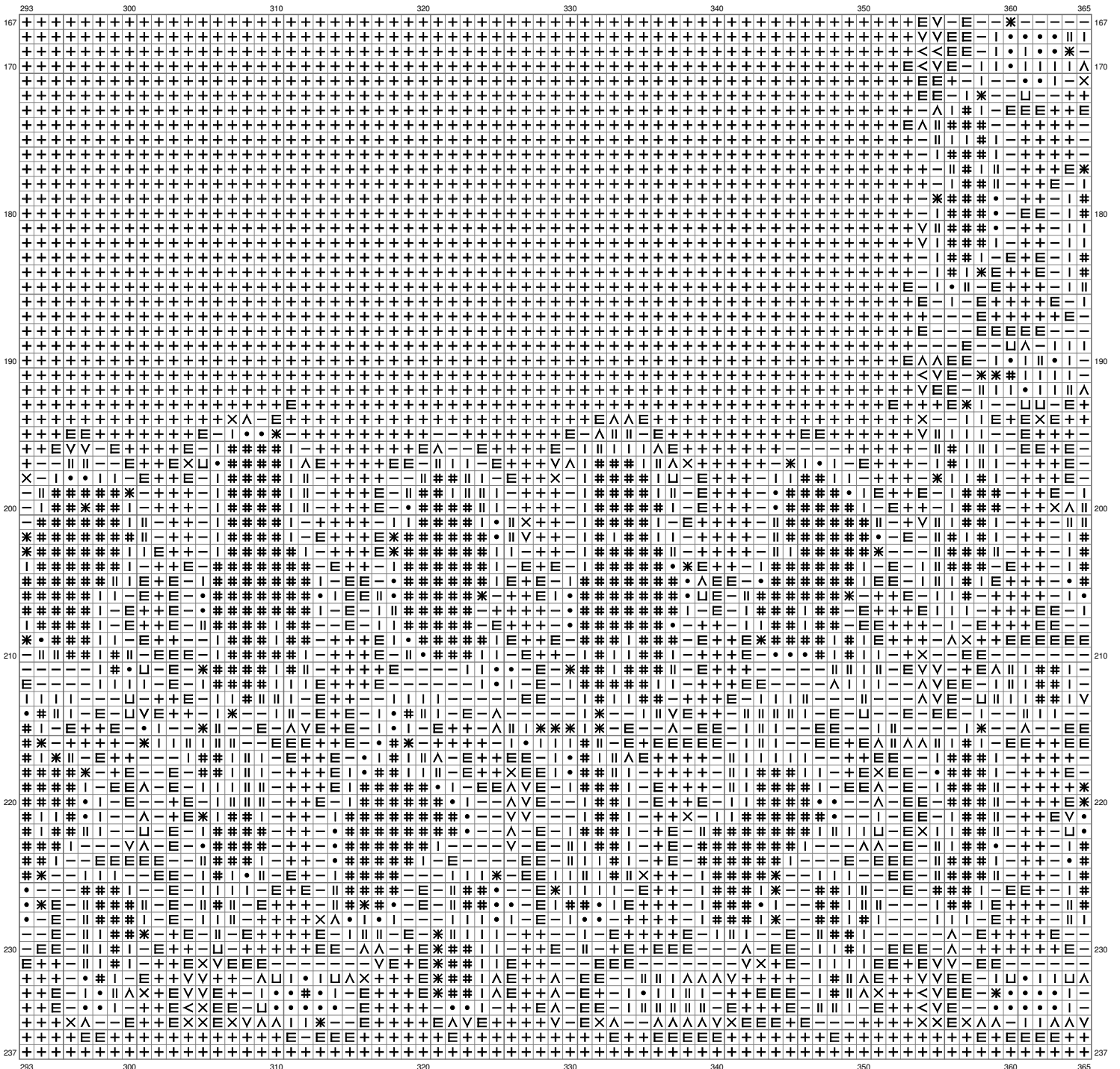
(This chart is printed using KG-Chart LE for Cross Stitch.)

# Alone Large



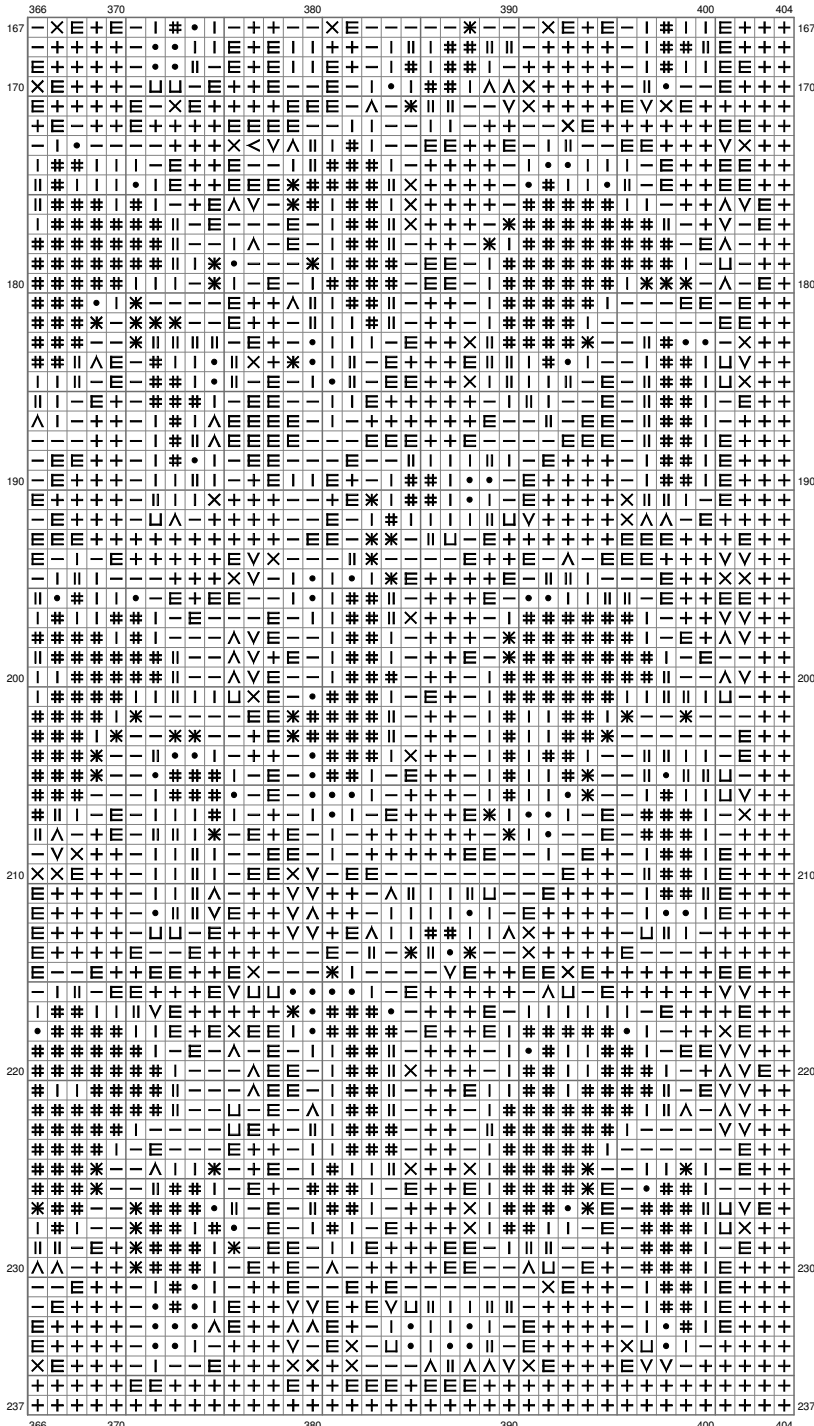


## Alone Large



(This chart is printed using KG-Chart LE for Cross Stitch.)

## Alone Large



(This chart is printed using KG-Chart LE for Cross Stitch.)

# Alone Large



























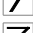

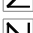

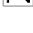



Stitch Count:404w x 237h

Cloth:Linen Cloth's Color:White

Finished Size:114.01 cm x 66.88 cm (18 ct./inch)

Total 34 Colors

Color Table (DMC)

Cross Stitch					
	310	(52582 ct)		972	(171 ct)
	939	(6860 ct)		444	(161 ct)
	500	(142 ct)		535	(245 ct)
	815	(9476 ct)		3787	(251 ct)
	3371	(654 ct)		522	(158 ct)
	498	(938 ct)		3826	(84 ct)
	3777	(6770 ct)		3822	(123 ct)
	817	(8551 ct)		523	(153 ct)
	321	(1385 ct)		738	(57 ct)
	938	(611 ct)		3023	(183 ct)
	300	(1036 ct)		928	(110 ct)
	918	(2343 ct)		3072	(145 ct)
	3031	(122 ct)		3756	(176 ct)
	780	(482 ct)		3770	(95 ct)
	946	(303 ct)		3866	(149 ct)
	782	(111 ct)		3865	(401 ct)
	3853	(94 ct)		BLANC	(626 ct)