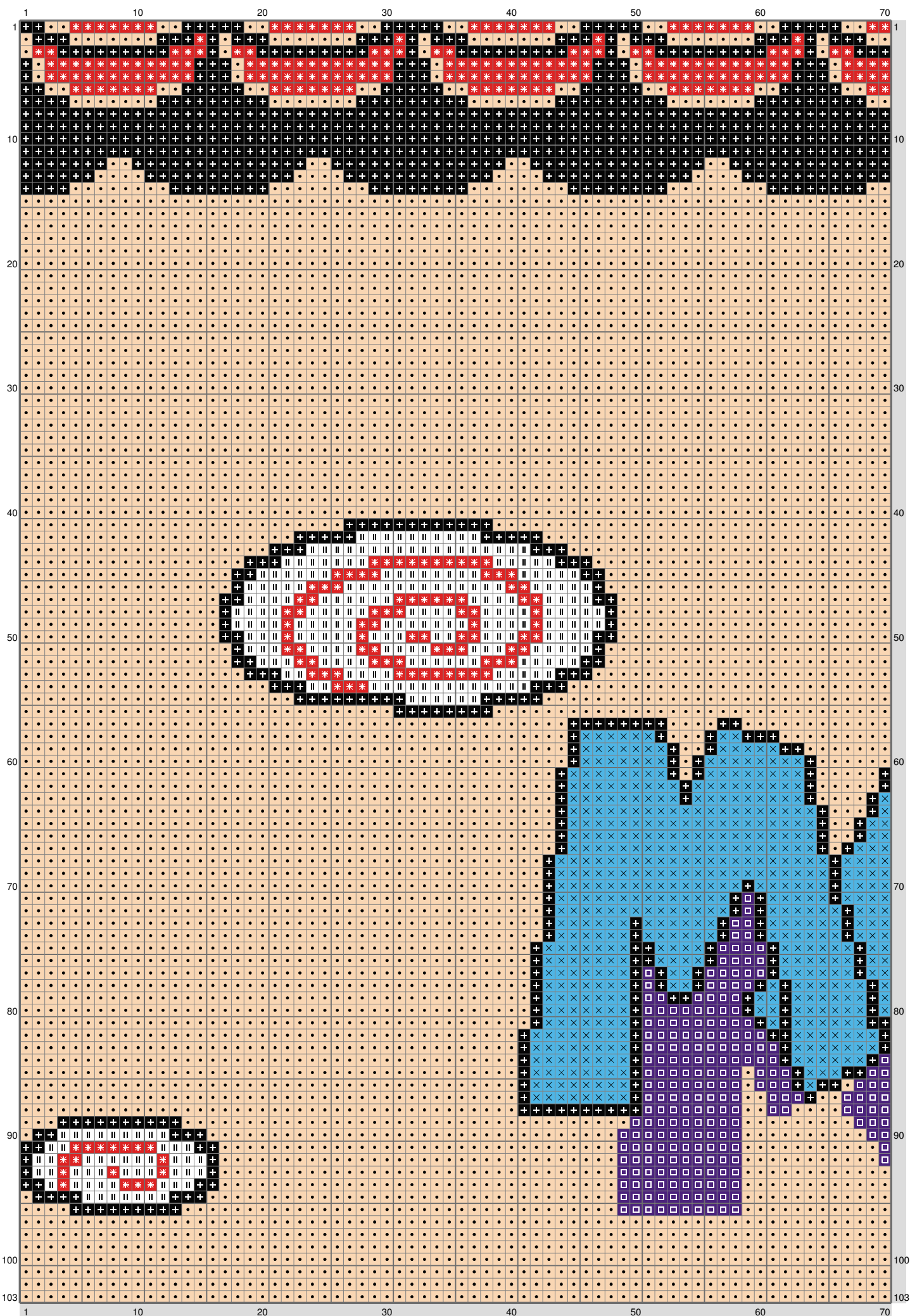
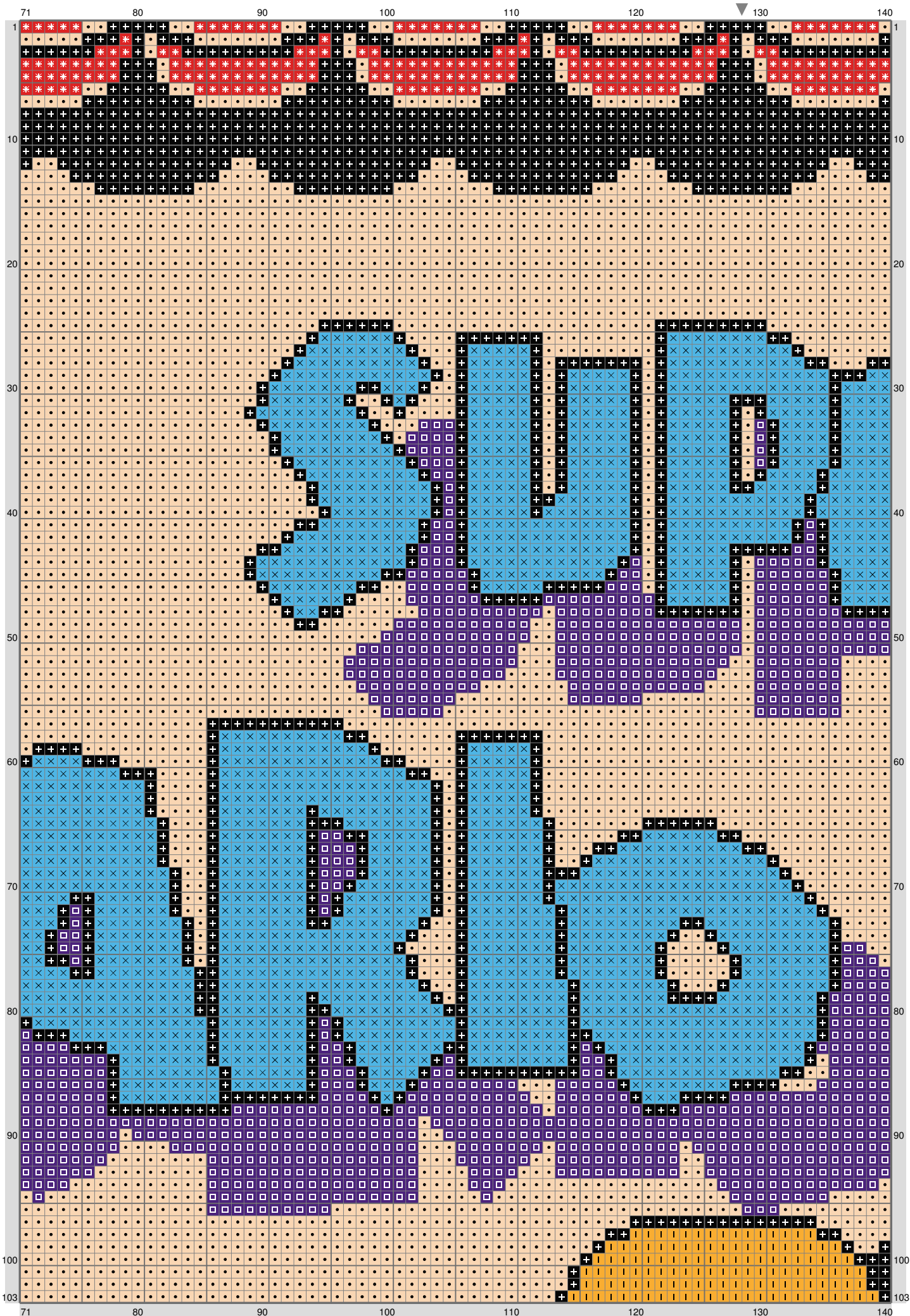


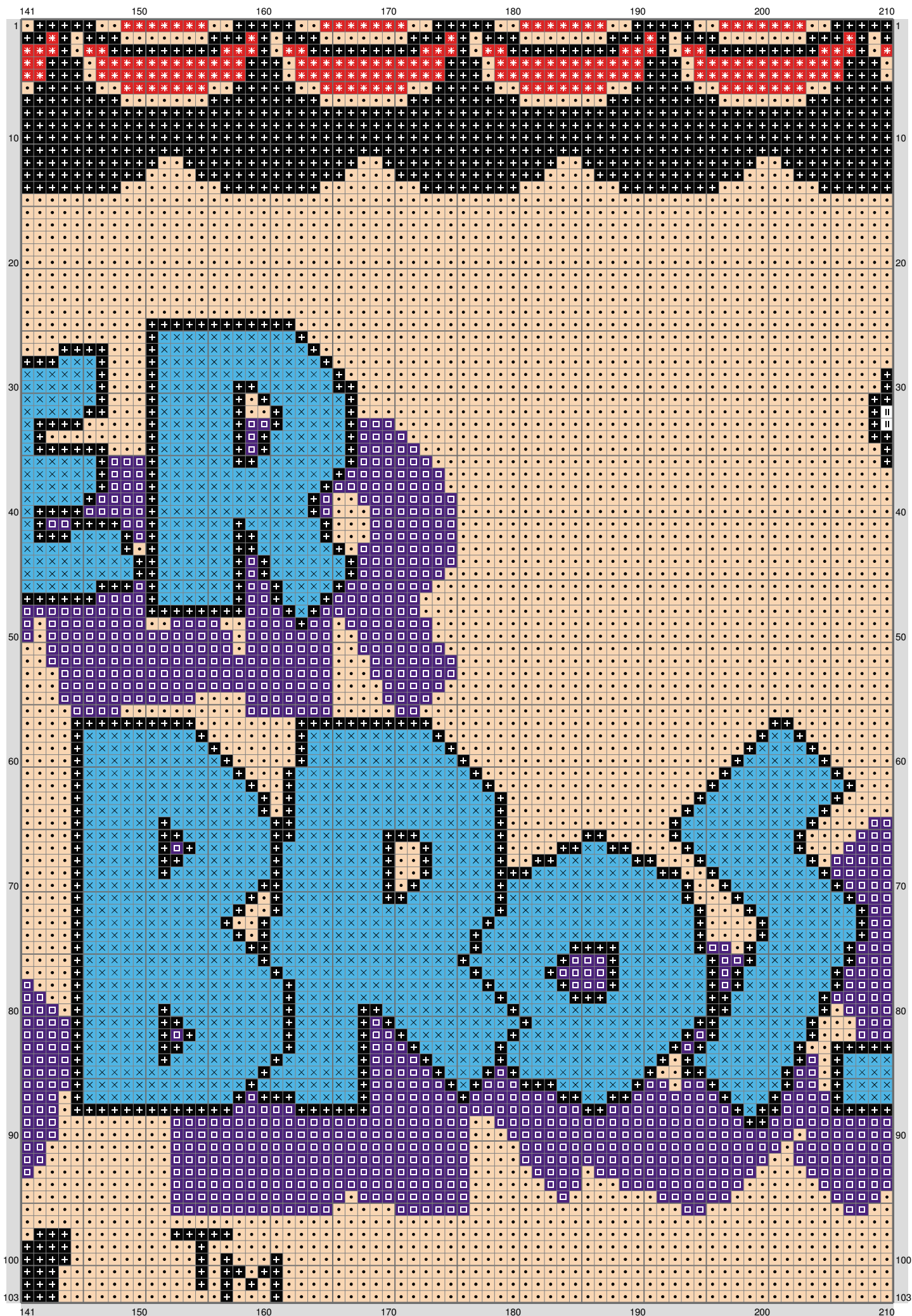
Untitled



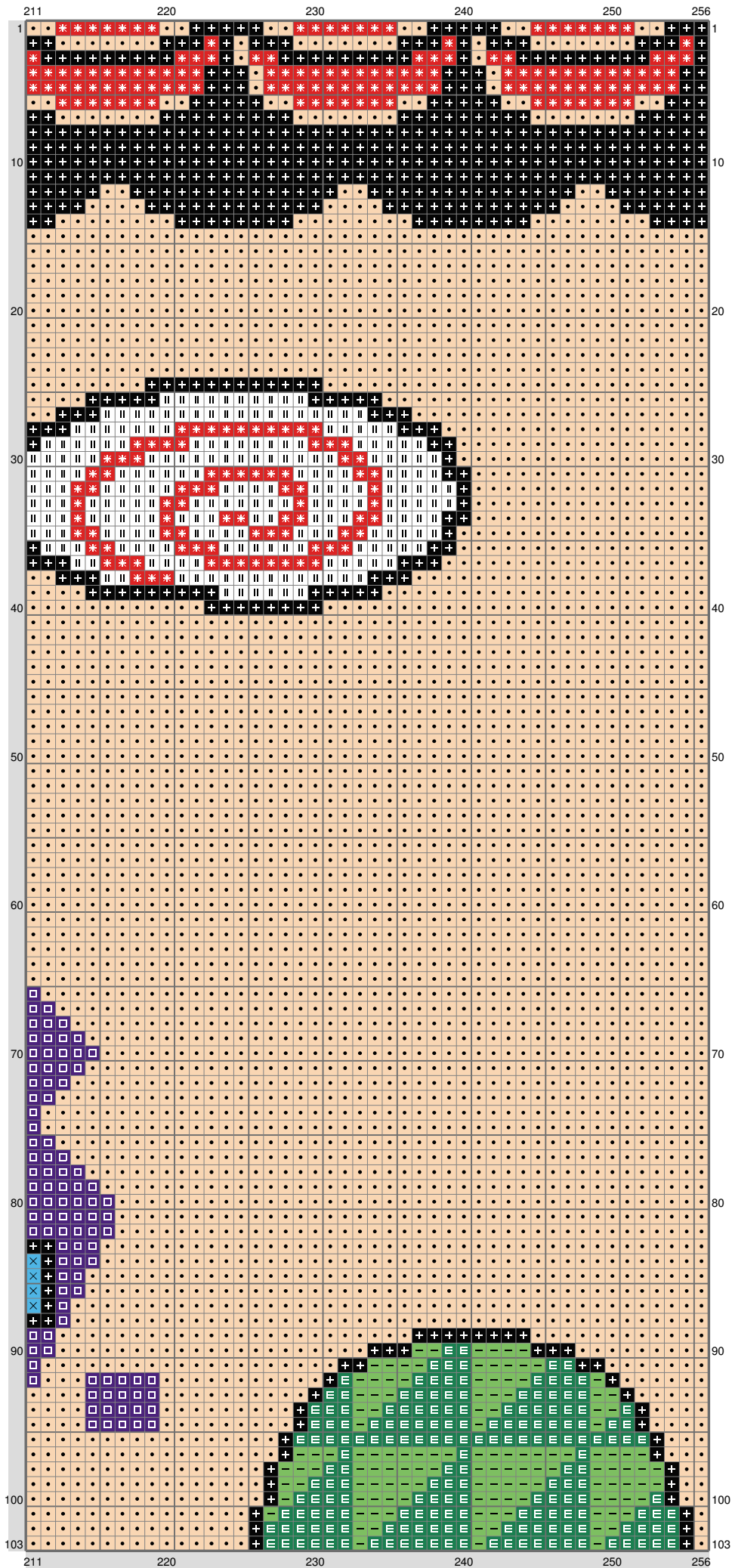
Untitled



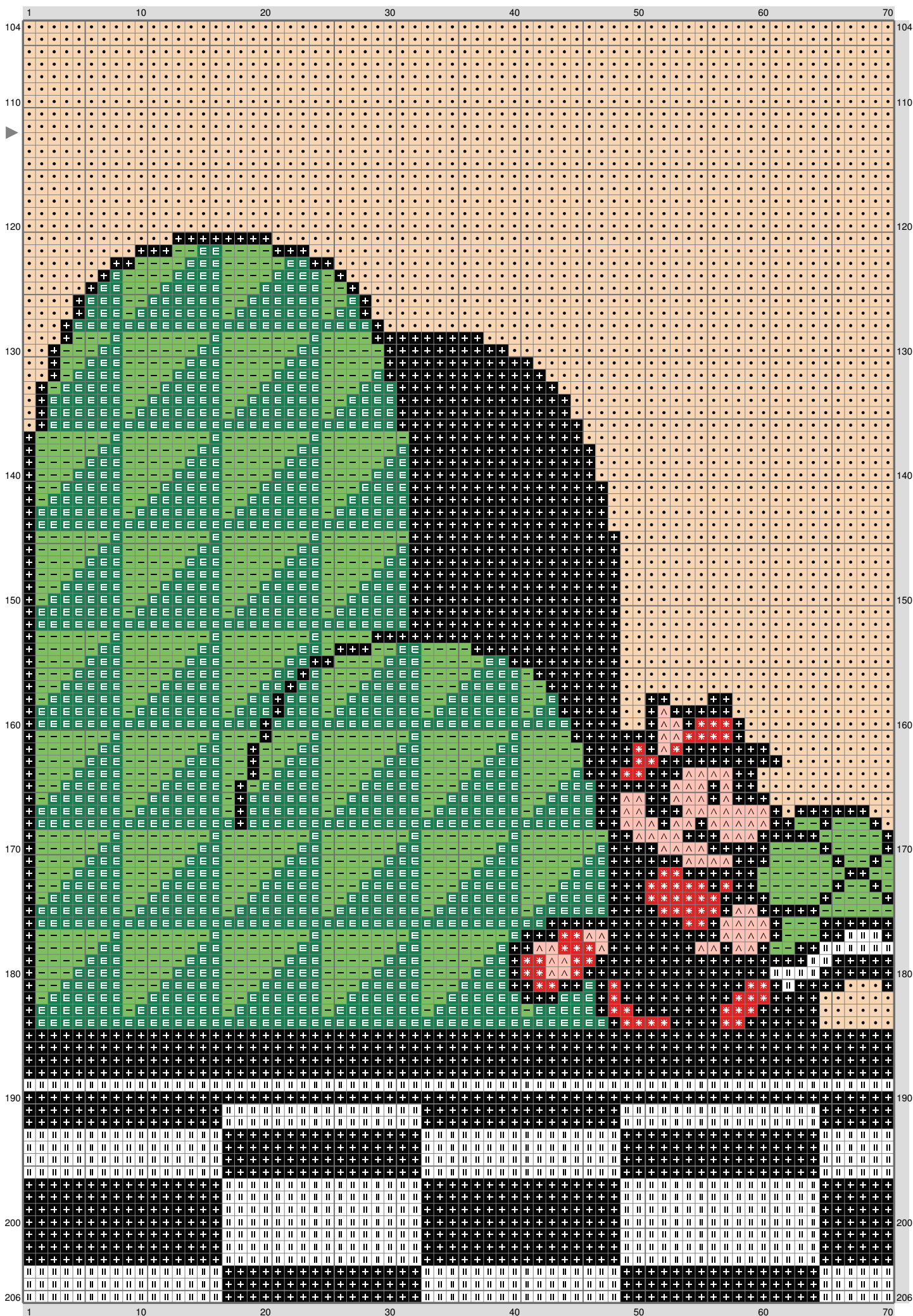
Untitled



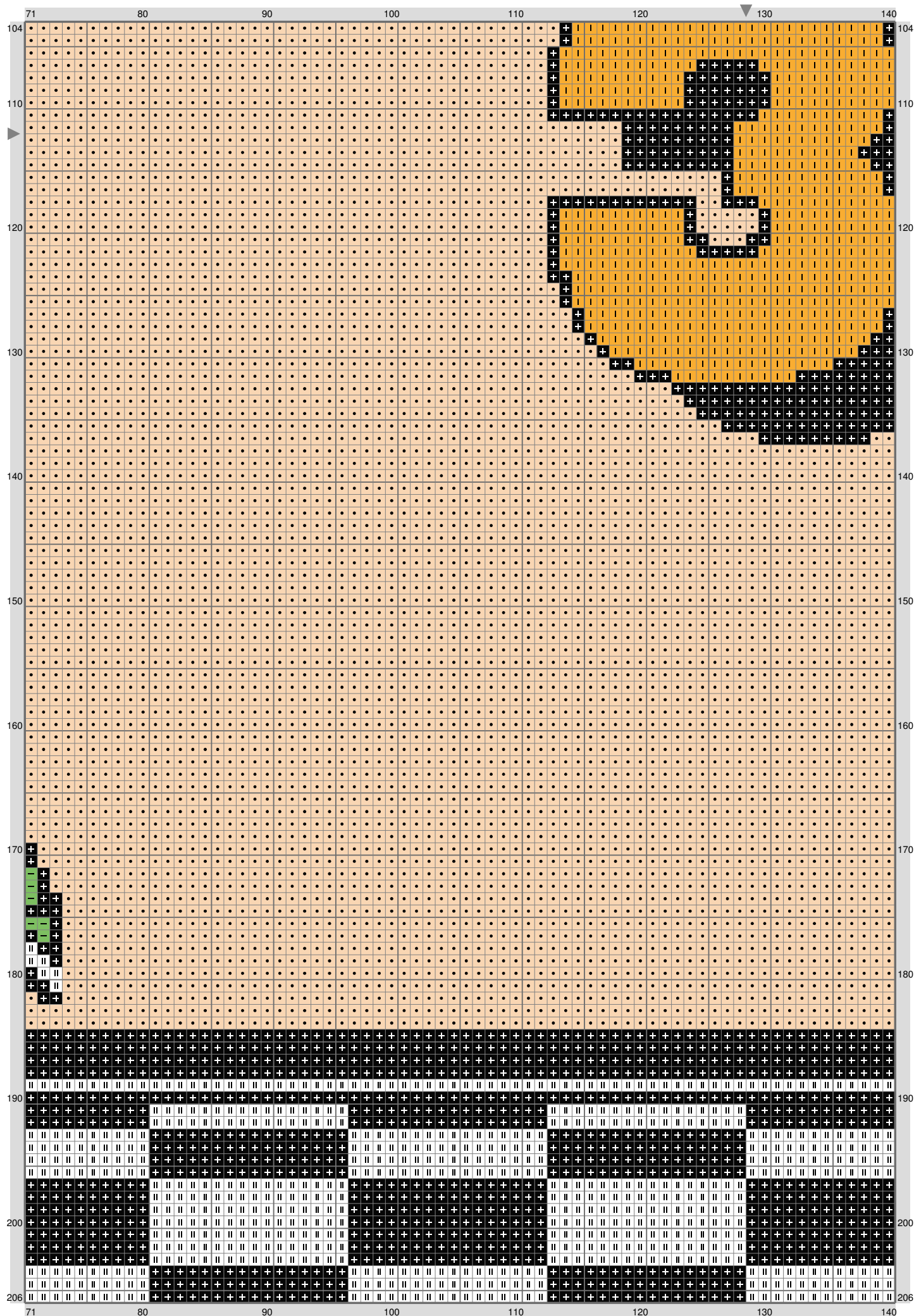
Untitled



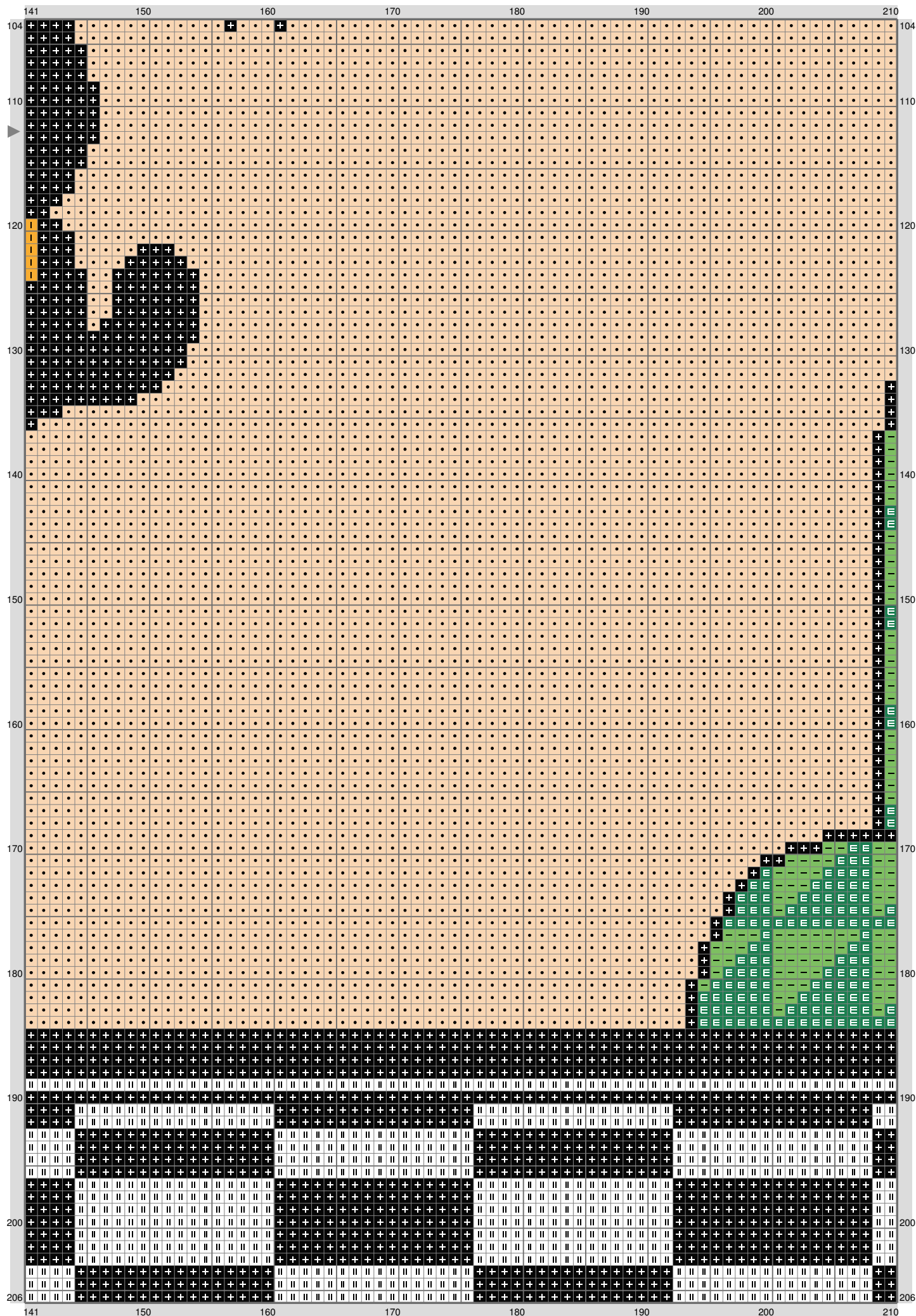
Untitled



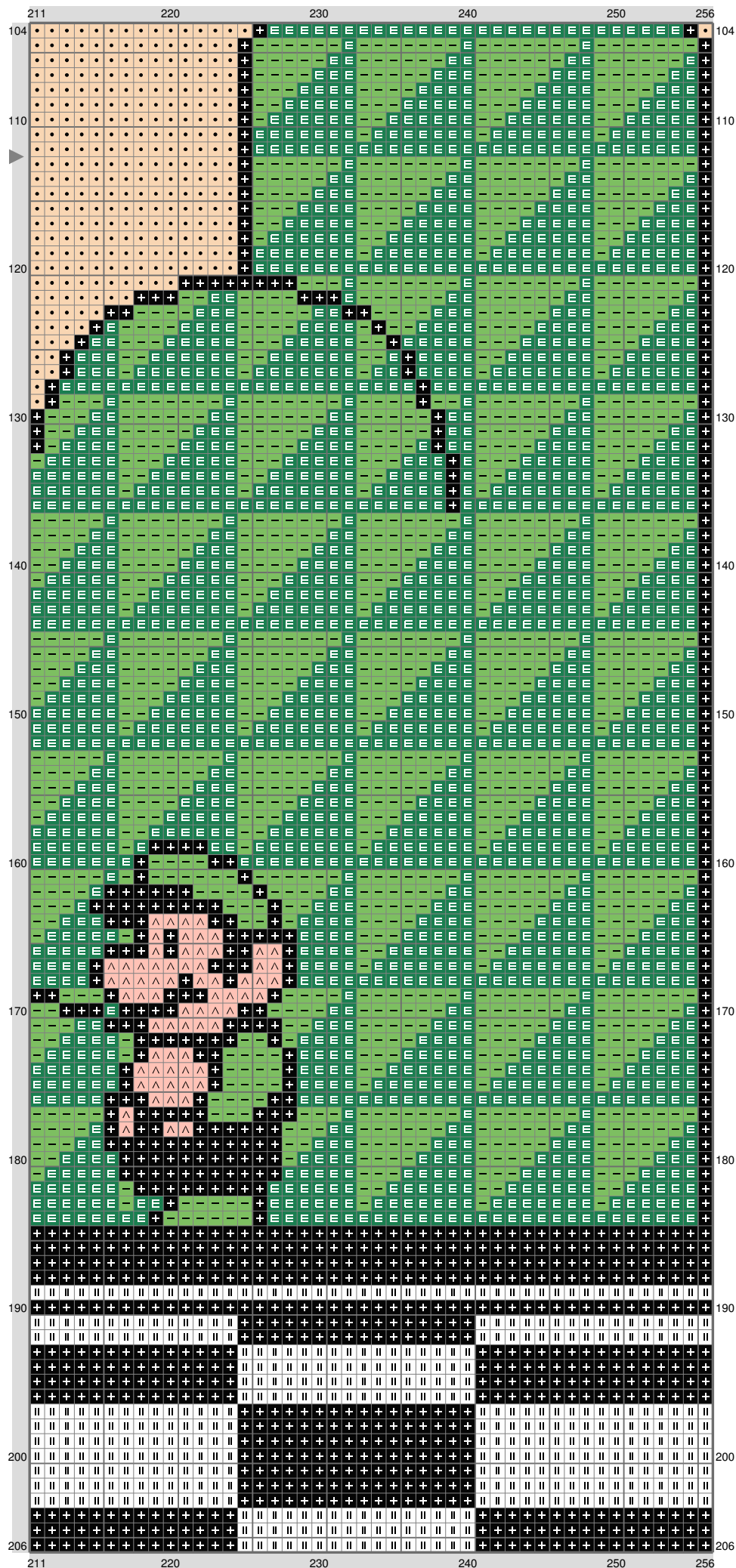
Untitled



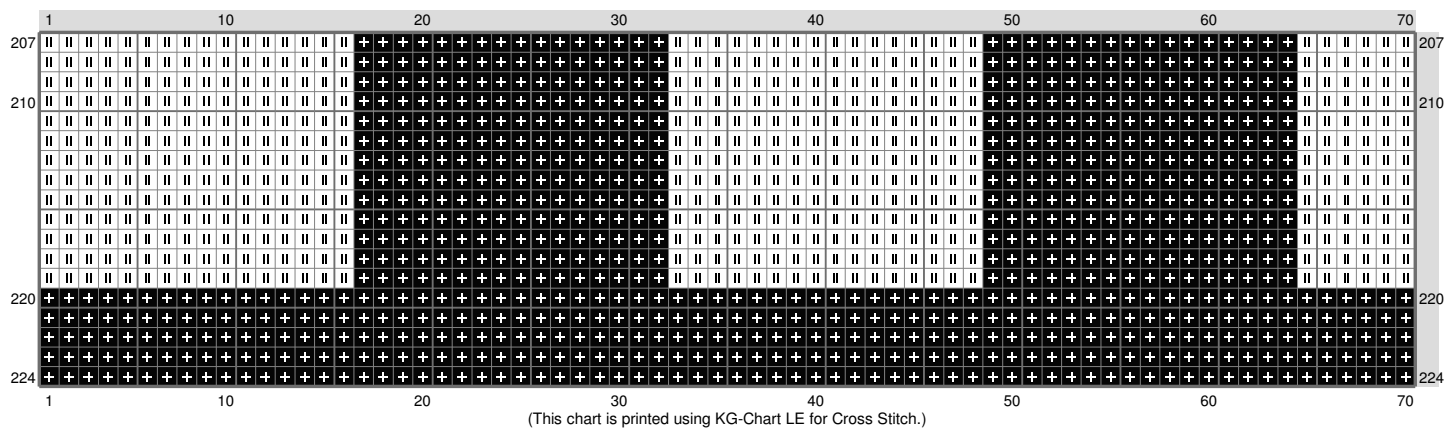
Untitled



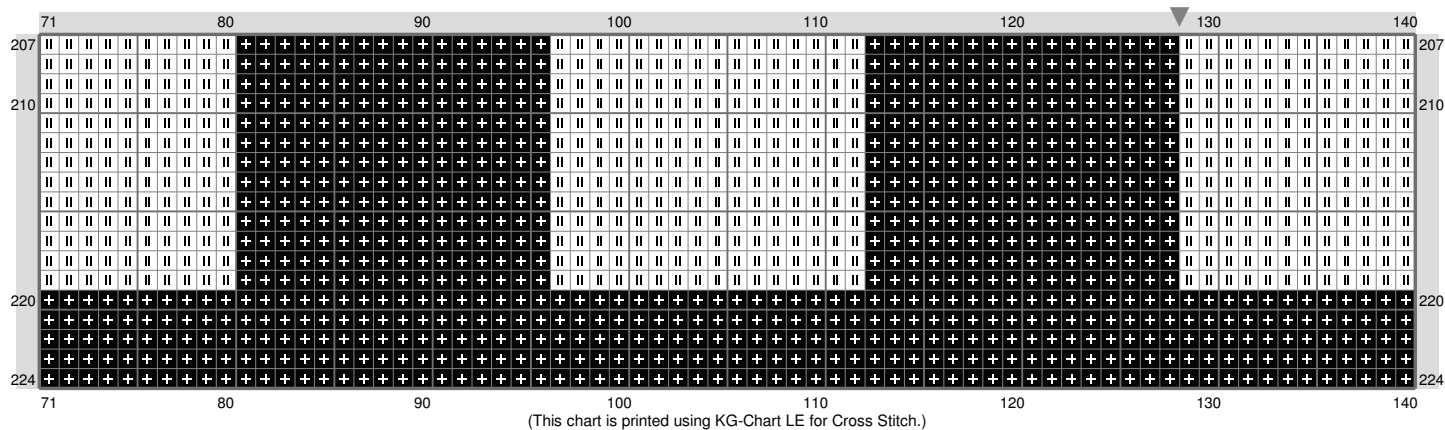
Untitled



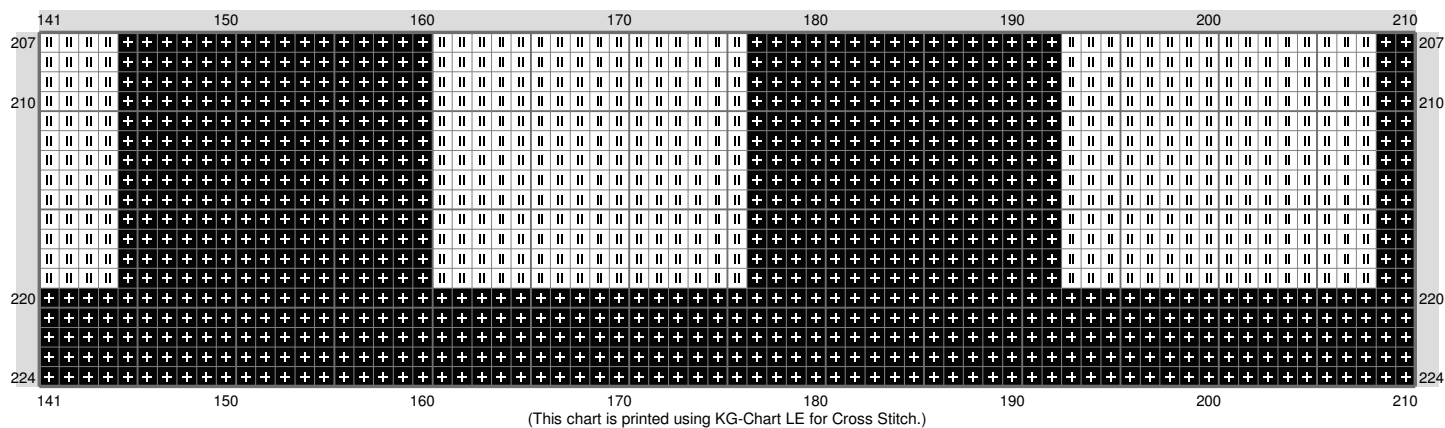
Untitled



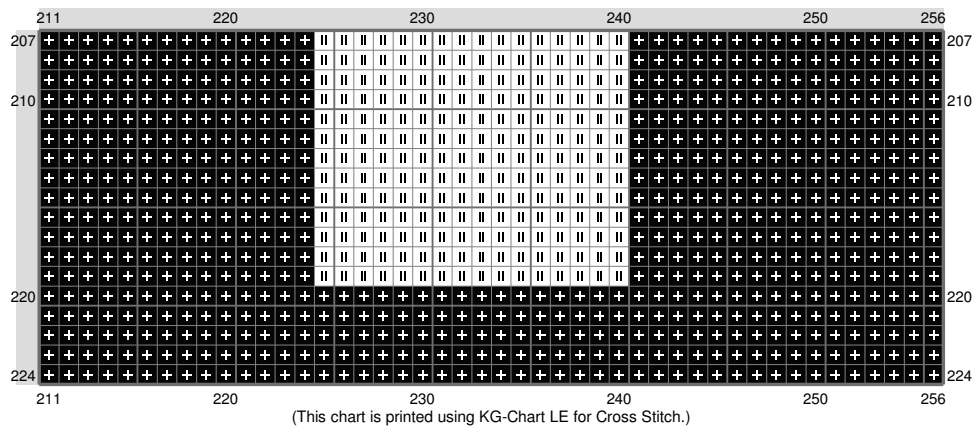
Untitled



Untitled



Untitled



Stitch Count: 256w x 224h

Finished Size: 72.24 cm x 63.21 cm (18 ct./inch)

Cloth: Aida

Cloth's Color: White

of colors: 10 Colors

Color Table (DMC)

Cross Stitch

	310	(11769 ct)
	910	(3311 ct)
	820	(2241 ct)
	906	(2540 ct)
	3845	(4021 ct)
	349	(955 ct)
	742	(682 ct)
	738	(27166 ct)
	353	(146 ct)
	B5200	(4513 ct)