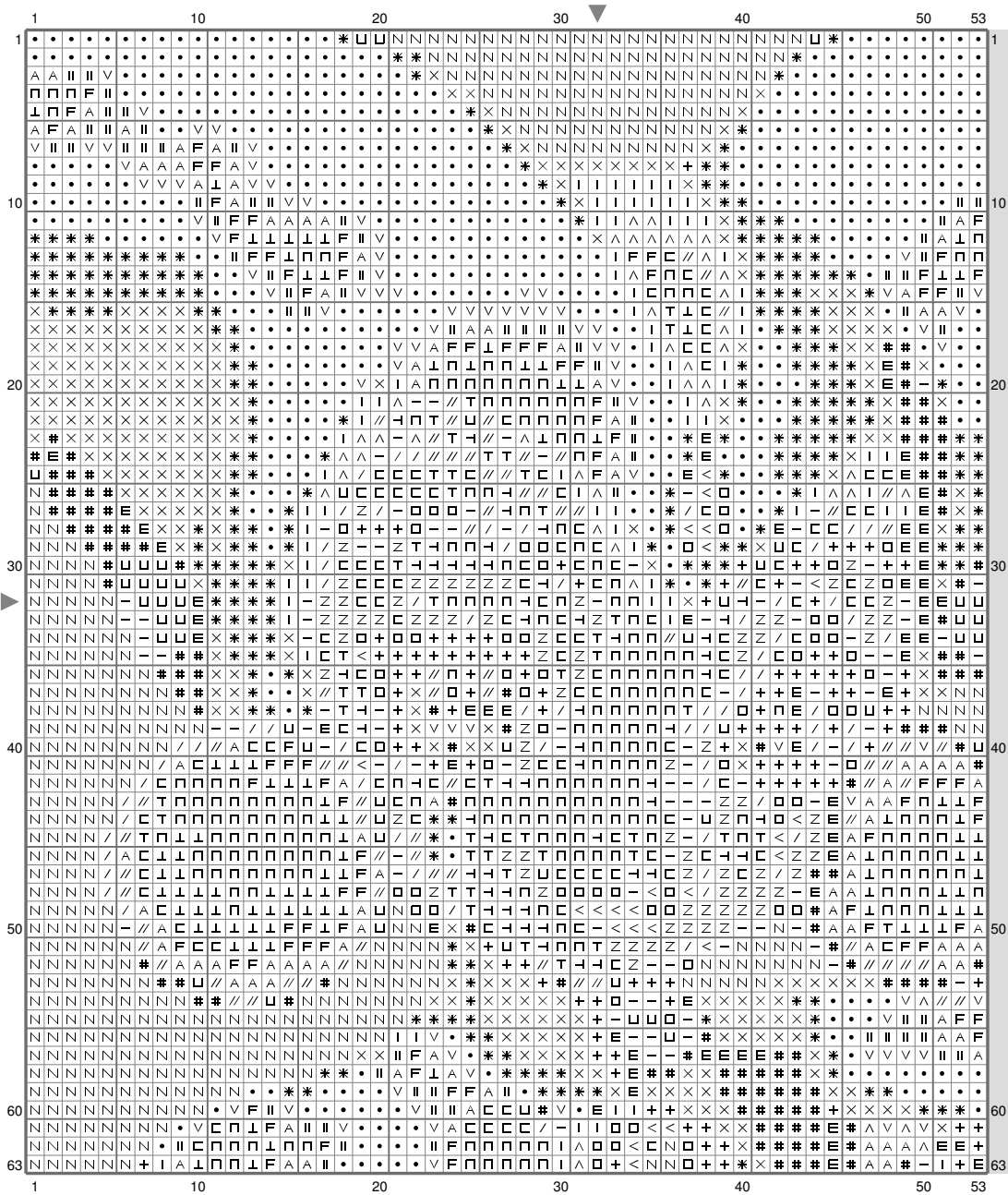
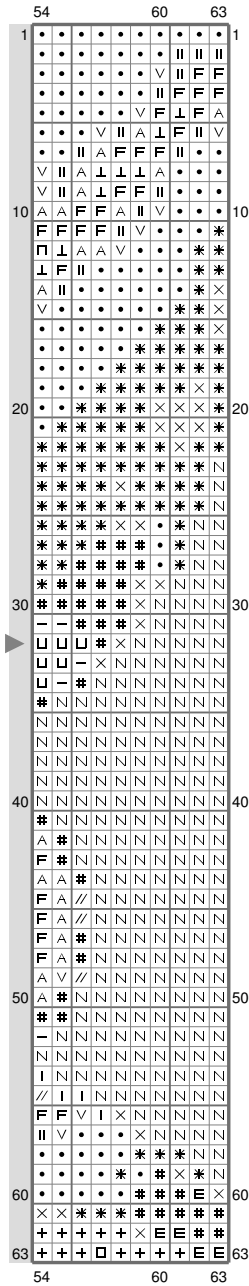


Untitled



Untitled



Stitch Count: 63w x 63h

Finished Size: 22.86 cm x 22.86 cm (14 ct./inch)

Cloth: Aida

Cloth's Color: White

of colors: 25 Colors

Color Table (DMC)

Cross Stitch

+	939	(123 ct)
E	3371	(67 ct)
□	500	(68 ct)
—	844	(104 ct)
×	815	(306 ct)
*	498	(353 ct)
I	300	(81 ct)
#	3802	(171 ct)
•	817	(709 ct)
∨	347	(97 ct)
^	420	(44 ct)
	921	(88 ct)
<	824	(25 ct)
U	3041	(57 ct)
/	3768	(69 ct)
Z	793	(84 ct)
N	798	(663 ct)
//	3860	(80 ct)
A	356	(123 ct)
□	647	(120 ct)
F	152	(110 ct)
T	3023	(45 ct)
⊥	842	(103 ct)
⌊	415	(55 ct)
□	822	(224 ct)

(This chart is printed using KG-Chart LE for Cross Stitch.)