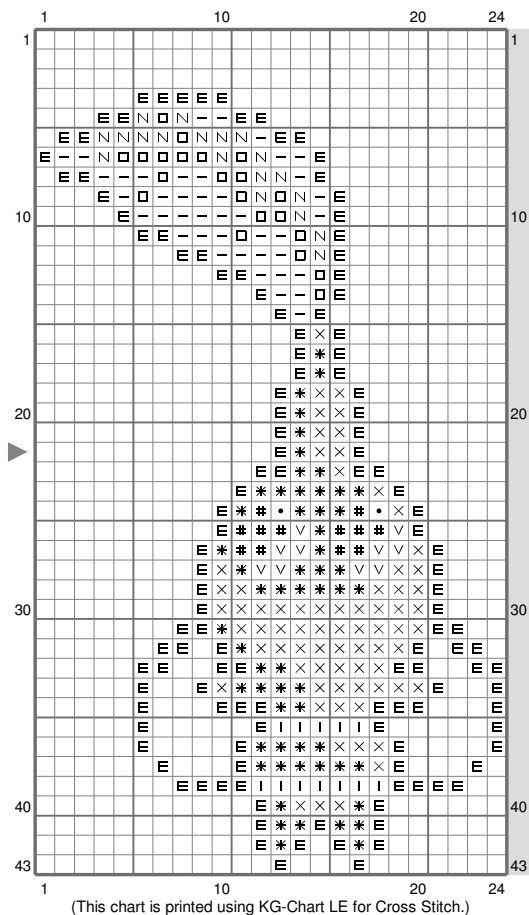
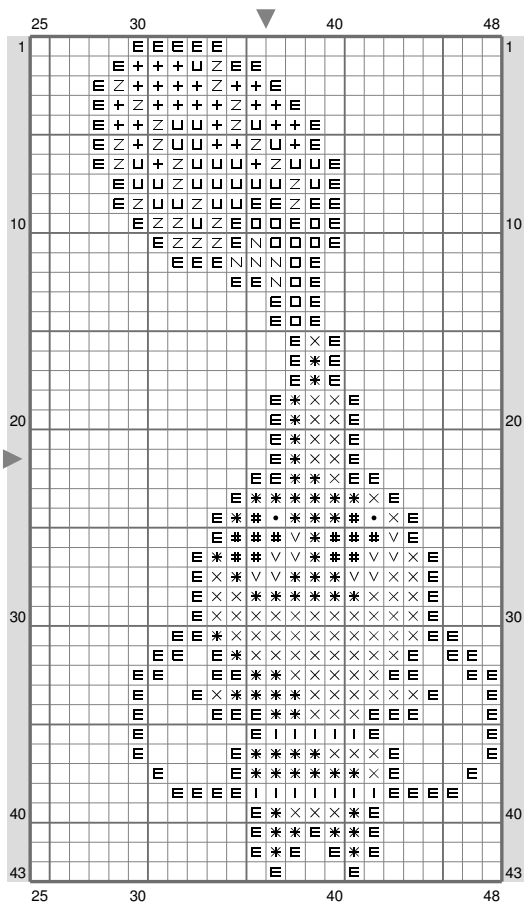


Flying Pikmin

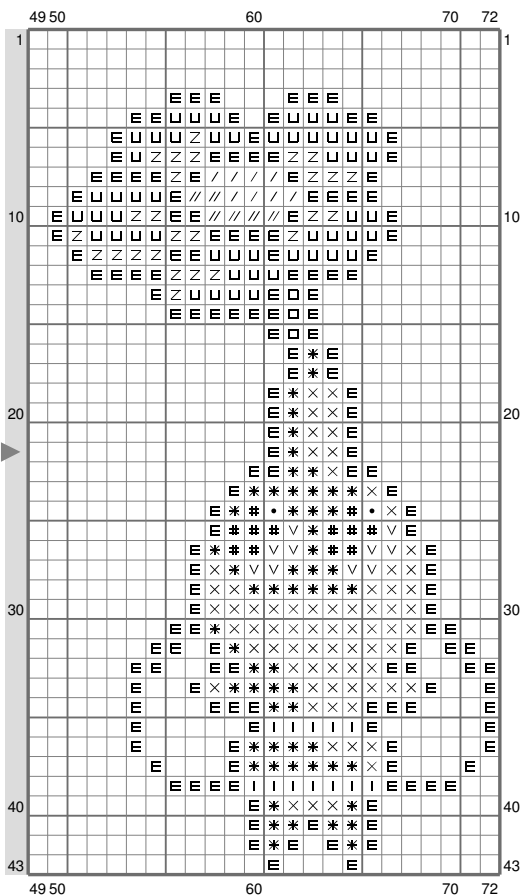


Flying Pikmin



(This chart is printed using KG-Chart LE for Cross Stitch.)

Flying Pikmin



(This chart is printed using KG-Chart LE for Cross Stitch.)

Flying Pikmin

Stitch Count: 72w x 43h

Finished Size: 26.12 cm x 15.60 cm (14 ct./inch)
















Cloth: Aida

Cloth's Color: White

of colors: 15 Colors

Color Table (DMC)

Cross Stitch

	310	(425 ct)
	3818	(34 ct)
	701	(41 ct)
	3350	(215 ct)
	3731	(177 ct)
	517	(36 ct)
	162	(6 ct)
	3842	(30 ct)
	797	(78 ct)
	444	(8 ct)
	3838	(27 ct)
	796	(50 ct)
	909	(24 ct)
	3822	(6 ct)
	601	(36 ct)