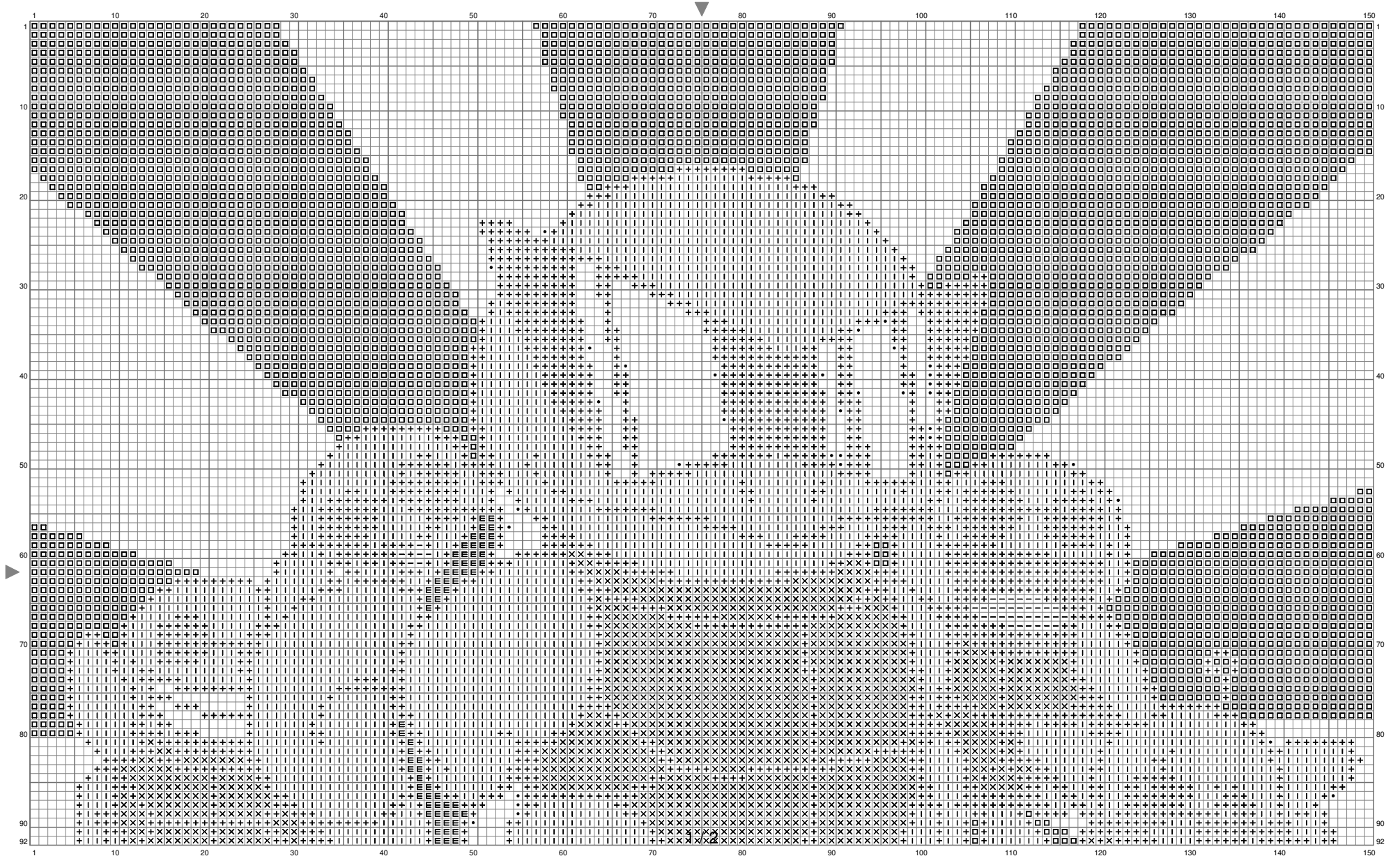
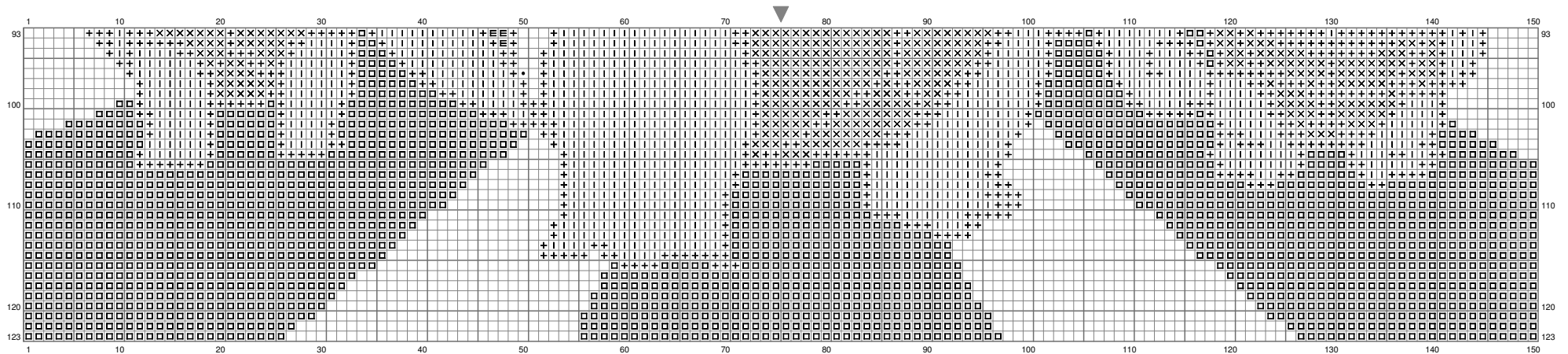


Squirtle Squad 2



(This chart is printed using KG-Chart LE for Cross Stitch.)

Squirtle Squad 2



(This chart is printed using KG-Chart LE for Cross Stitch.)

Stitch Count: 150w x 123h // Cloth: Aida Cloth's Color: White

Finished Size: 42.33 cm x 34.71 cm (18 ct./inch) // Total 6 Colors

Color Table (DMC)

Cross Stitch

+	310	(2791 ct)
□	349	(6091 ct)
-	3805	(38 ct)
X	972	(1493 ct)
I	519	(3507 ct)
E	829	(67 ct)