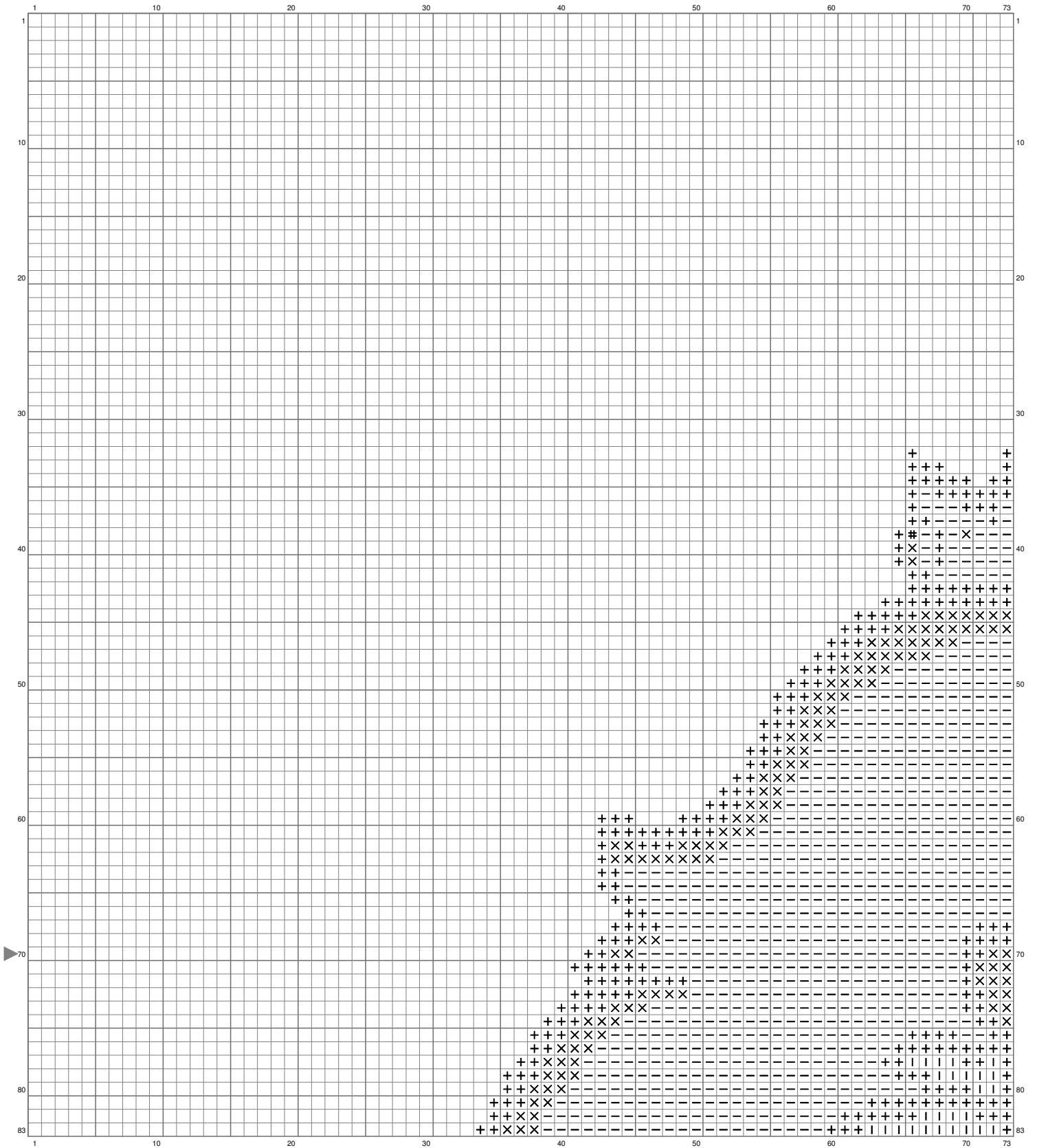
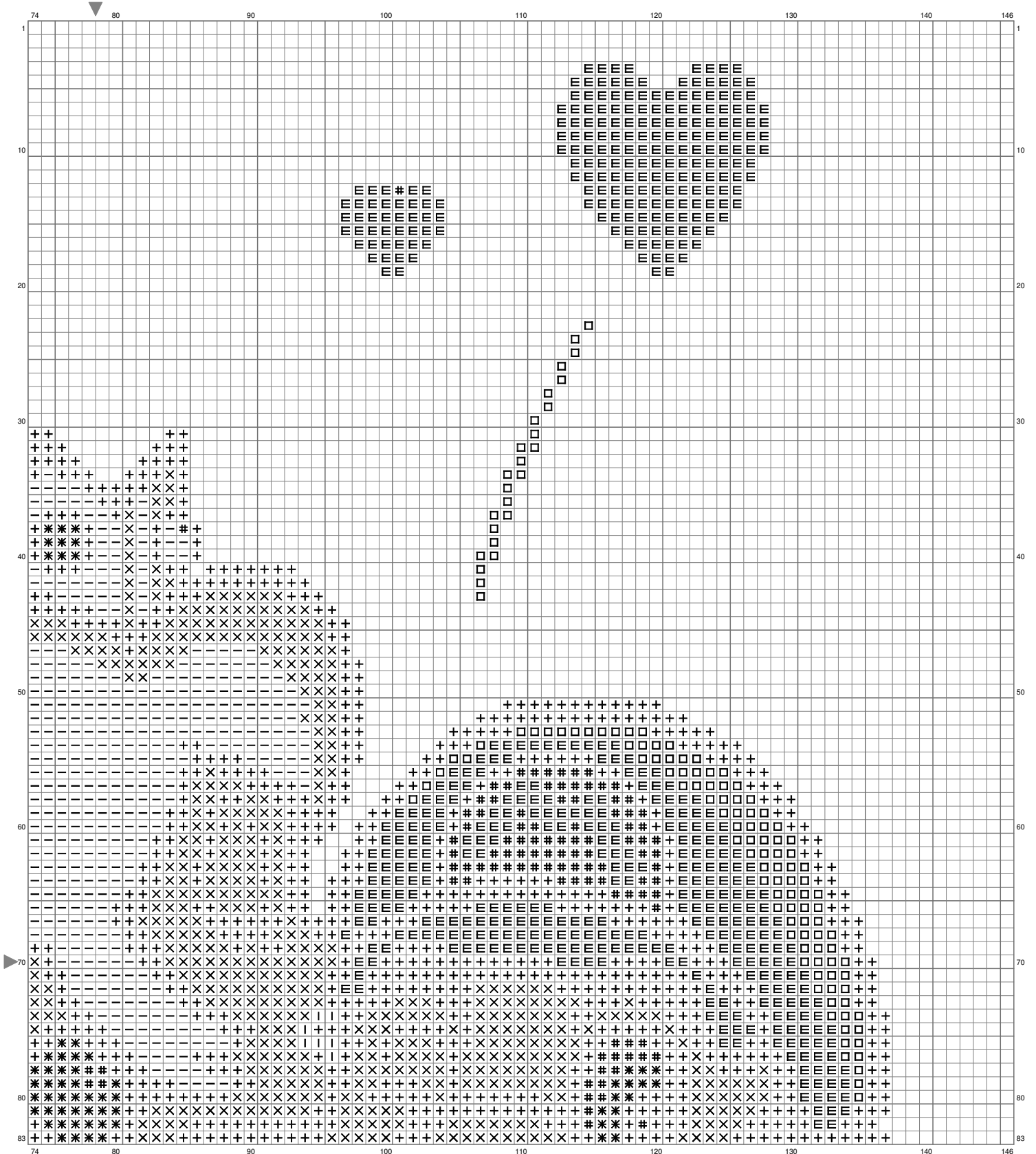


Mario and Peach



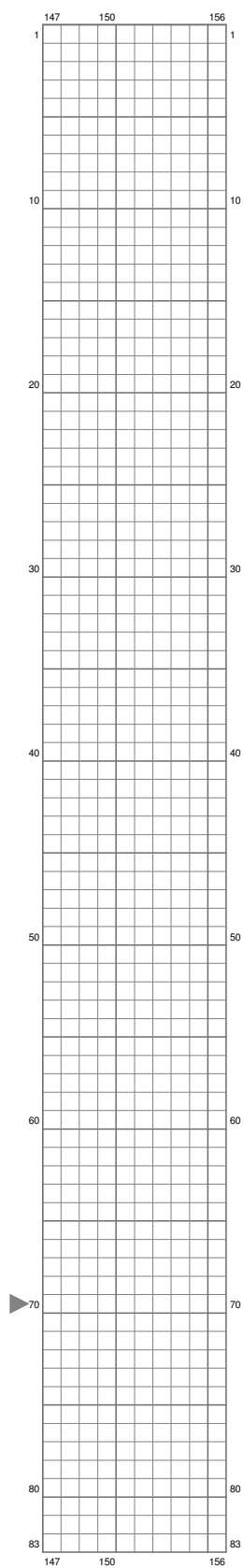
(This chart is printed using KG-Chart LE for Cross Stitch.)

Mario and Peach



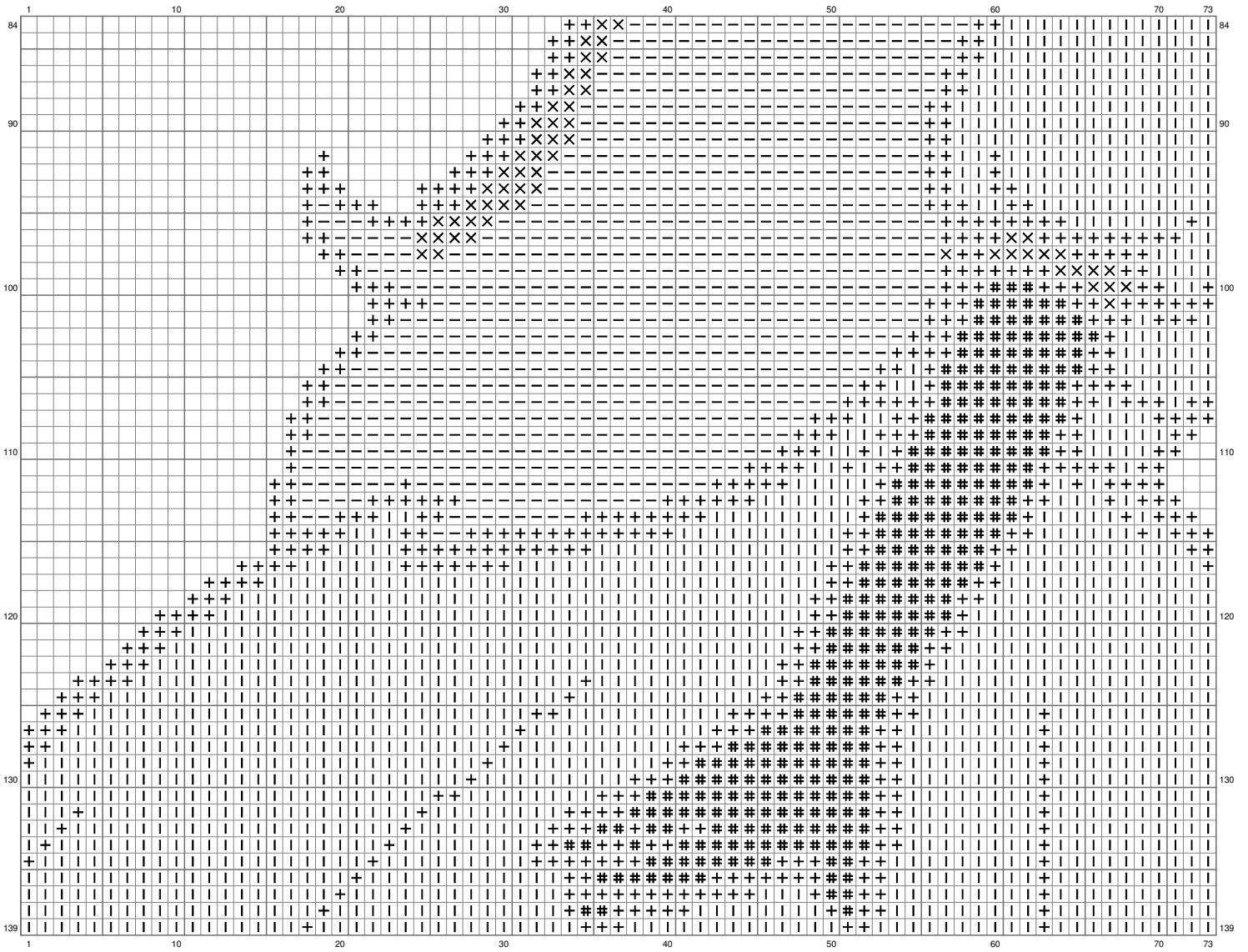
(This chart is printed using KG-Chart LE for Cross Stitch.)

Mario and Peach

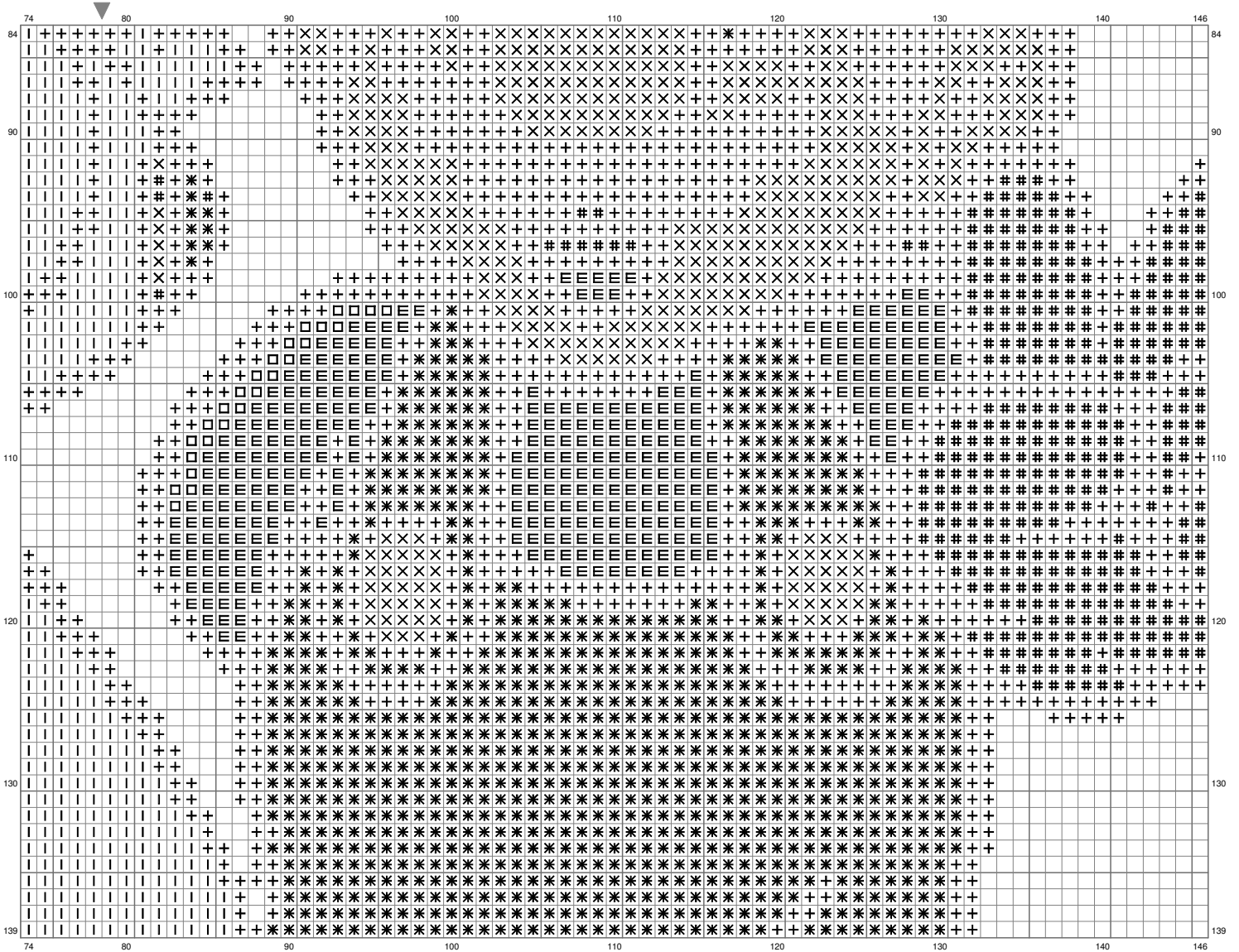


(This chart is printed using KG-Chart LE for Cross Stitch.)

Mario and Peach

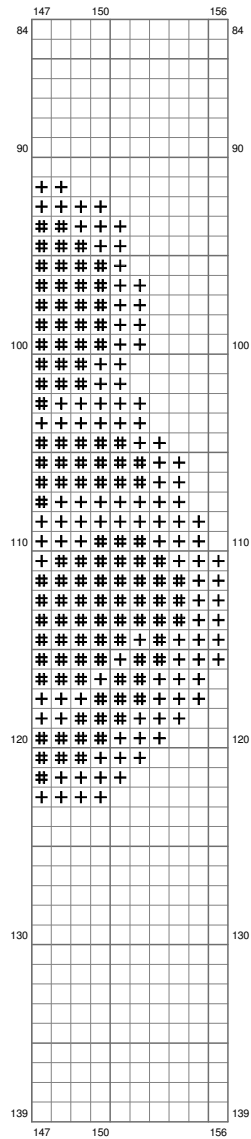


Mario and Peach



(This chart is printed using KG-Chart LE for Cross Stitch.)

Mario and Peach



(This chart is printed using KG-Chart LE for Cross Stitch.)

Stitch Count:156w x 139h // Cloth:Aida Cloth's Color:White

Finished Size:44.02 cm x 39.22 cm (18 ct./inch) // Total 8 Colors

Color Table (DMC)

Cross Stitch

+	310	(2884 ct)
E	498	(862 ct)
□	946	(157 ct)
—	740	(1954 ct)
×	3856	(1095 ct)
✱	3843	(1019 ct)
I	3805	(1861 ct)
#	3865	(902 ct)