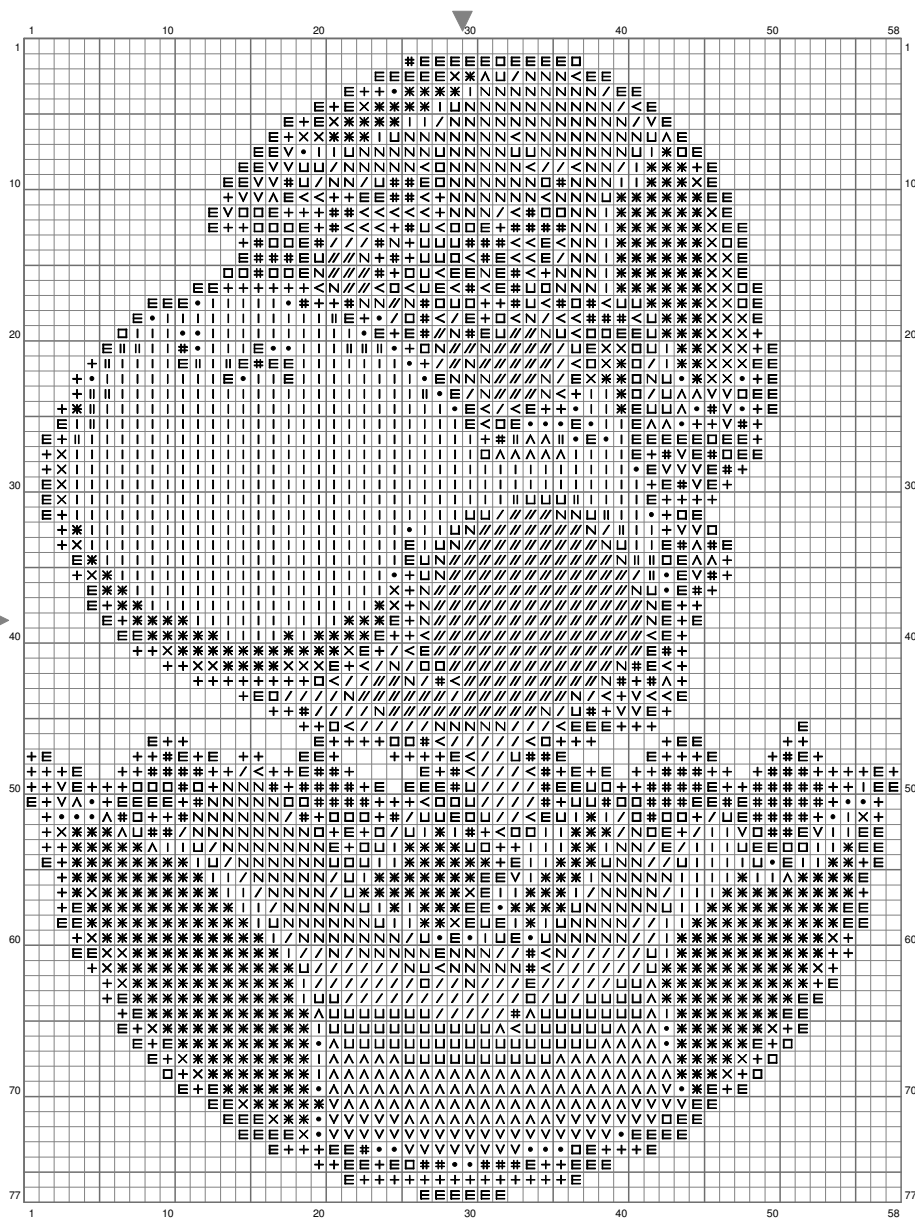


Baby Yoshi



(This chart is printed using KG-Chart LE for Cross Stitch.)

Stitch Count: 58w x 77h
 Cloth: Aida Cloth's Color: White
 Finished Size: 16.36 cm x 21.73 cm
 (18 ct./inch)

Total 16 Colors

Color Table (DMC)

Cross Stitch

+	934	(261 ct)
E	936	(292 ct)
□	937	(97 ct)
×	986	(71 ct)
*	988	(456 ct)
I	906	(566 ct)
#	830	(139 ct)
•	470	(64 ct)
V	471	(74 ct)
△	166	(125 ct)
	704	(24 ct)
<	372	(71 ct)
U	3348	(157 ct)
/	772	(161 ct)
N	745	(268 ct)
//	B5200	(185 ct)