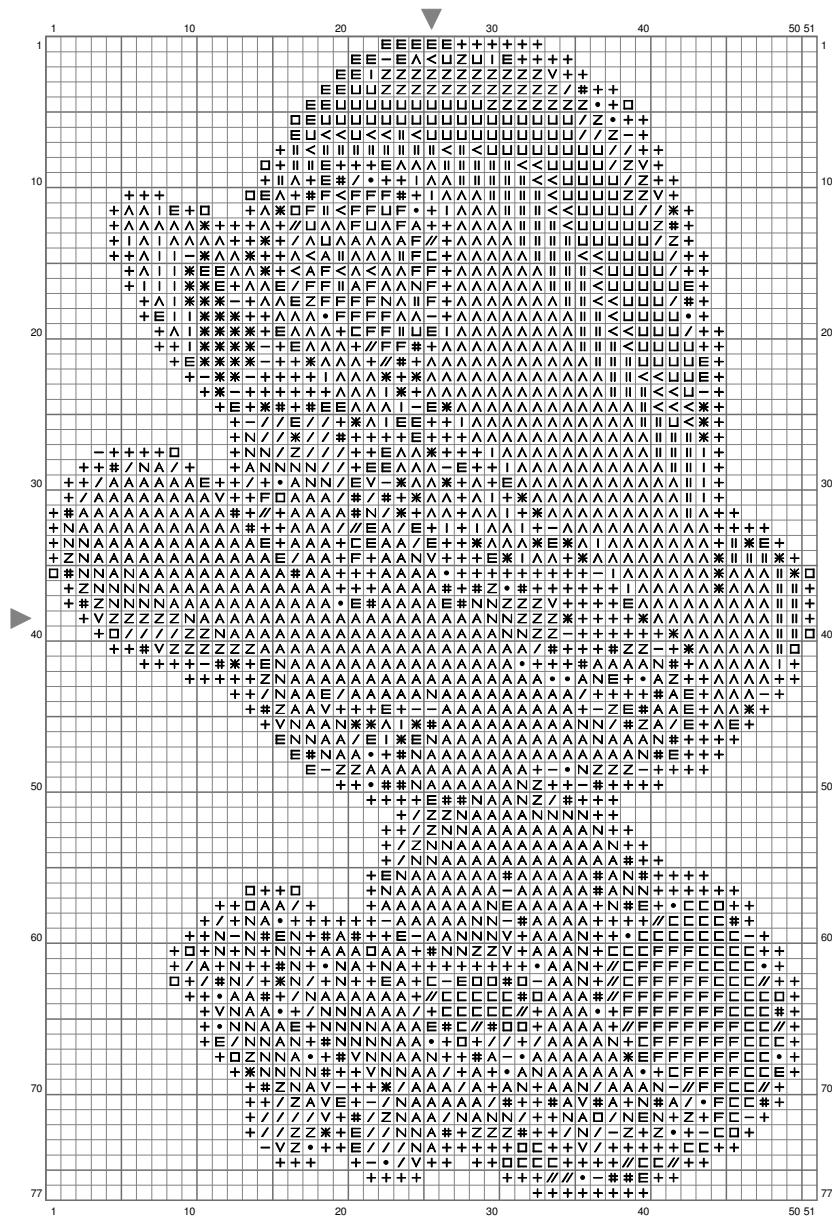


Baby Mario



(This chart is printed using KG-Chart LE for Cross Stitch.)

Stitch Count: 51w x 77h

Cloth: Aida Cloth's Color: White

Finished Size: 14.39 cm x 21.73 cm
(18 ct./inch)

Total 20 Colors

Color Table (DMC)

Cross Stitch

+	939	(519 ct)
E	3371	(95 ct)
□	936	(33 ct)
-	898	(47 ct)
*	780	(75 ct)
I	975	(44 ct)
#	830	(83 ct)
•	370	(38 ct)
V	435	(23 ct)
△	947	(368 ct)
	970	(98 ct)
<	922	(41 ct)
U	976	(117 ct)
/	422	(101 ct)
Z	977	(99 ct)
N	437	(154 ct)
//	3022	(22 ct)
A	738	(506 ct)
C	828	(75 ct)
F	B5200	(87 ct)