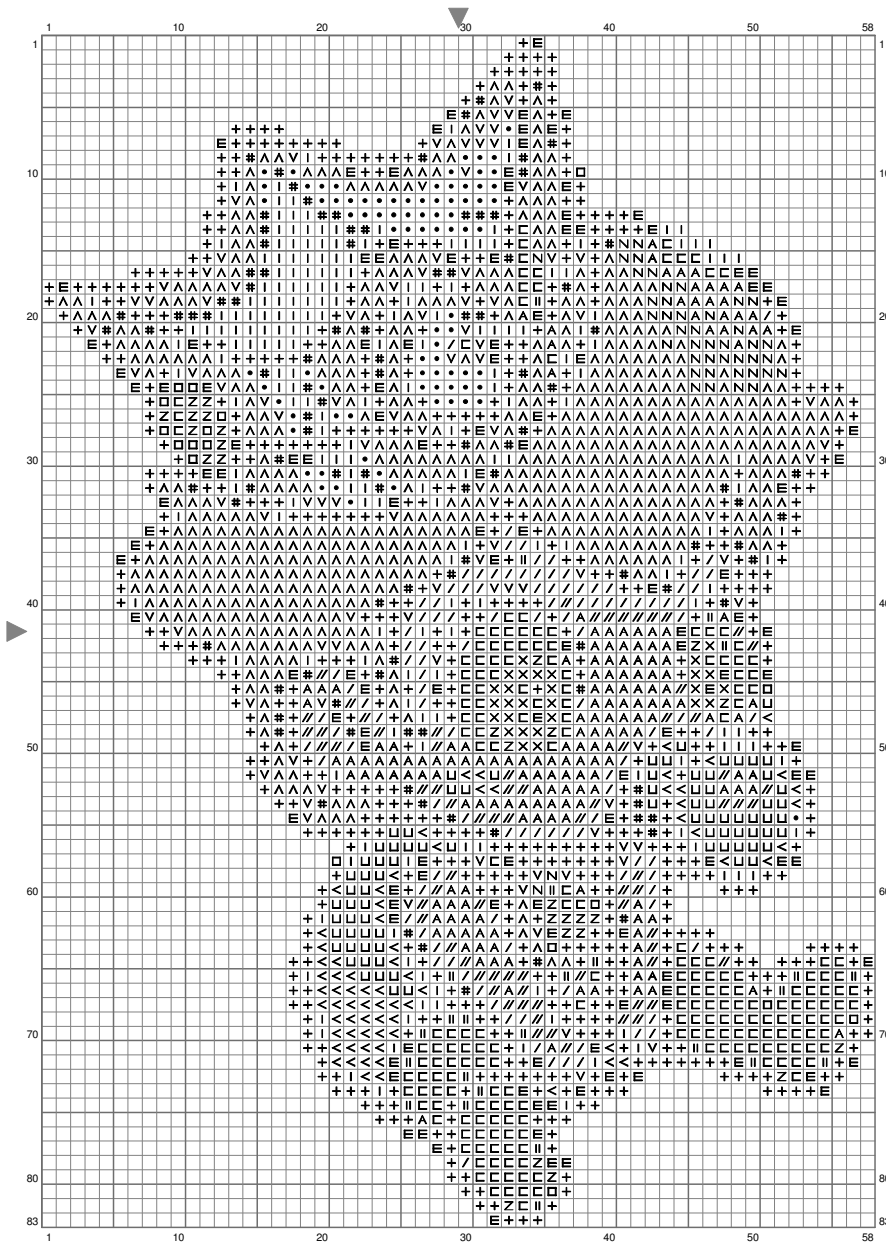


Baby Princess Peach



(This chart is printed using KG-Chart LE for Cross Stitch.)

Stitch Count: 58w x 83h

Cloth: Aida Cloth's Color: White

Finished Size: 16.36 cm x 23.42 cm
(18 ct./inch)

Total 18 Colors

Color Table (DMC)

Cross Stitch

+	310	(632 ct)
E	934	(132 ct)
□	988	(18 ct)
×	3845	(28 ct)
I	829	(214 ct)
#	918	(107 ct)
●	946	(85 ct)
V	3852	(97 ct)
△	972	(641 ct)
	3790	(25 ct)
<	335	(73 ct)
U	603	(82 ct)
/	743	(115 ct)
Z	964	(28 ct)
N	307	(44 ct)
//	744	(73 ct)
A	3078	(186 ct)
□	B5200	(215 ct)