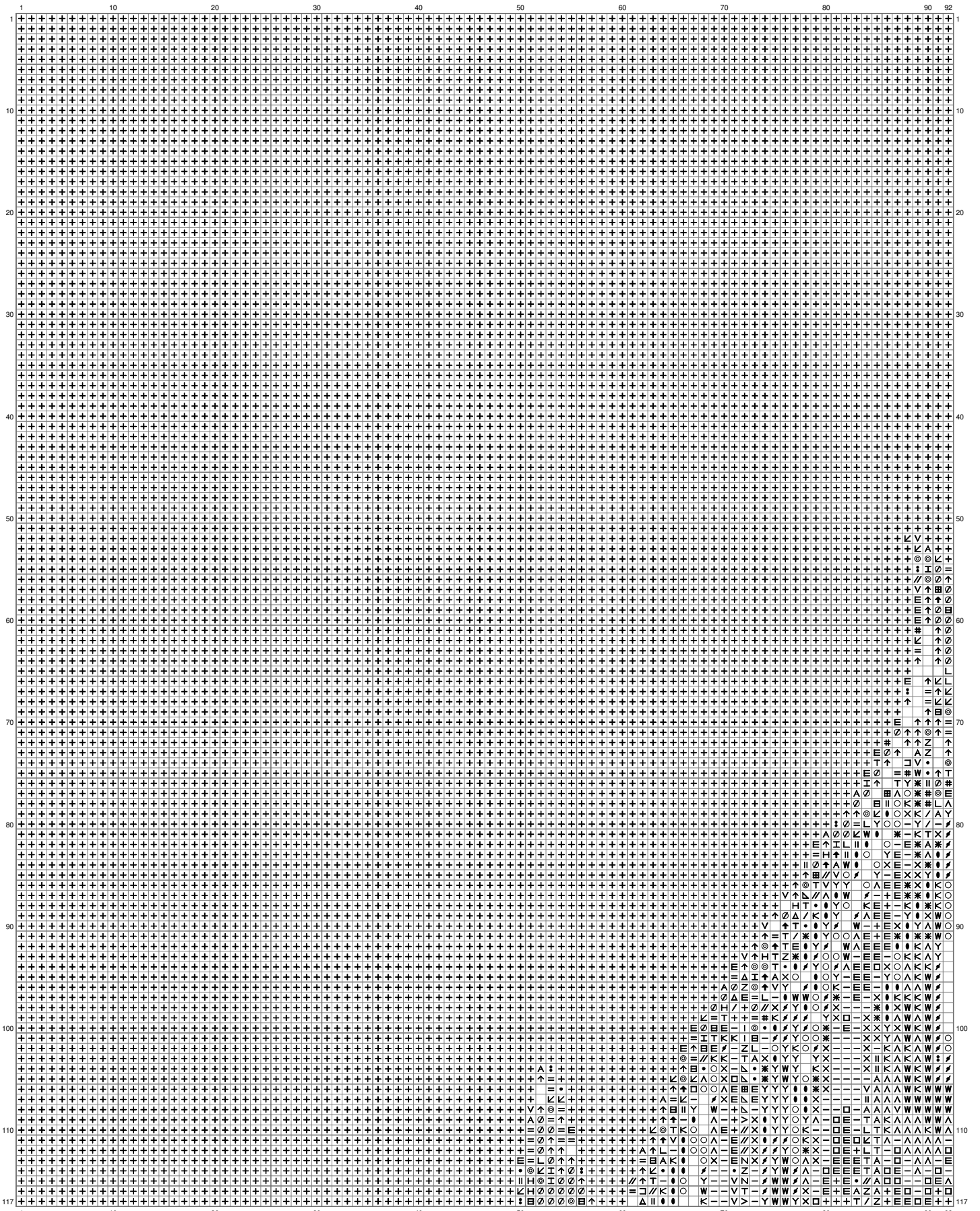
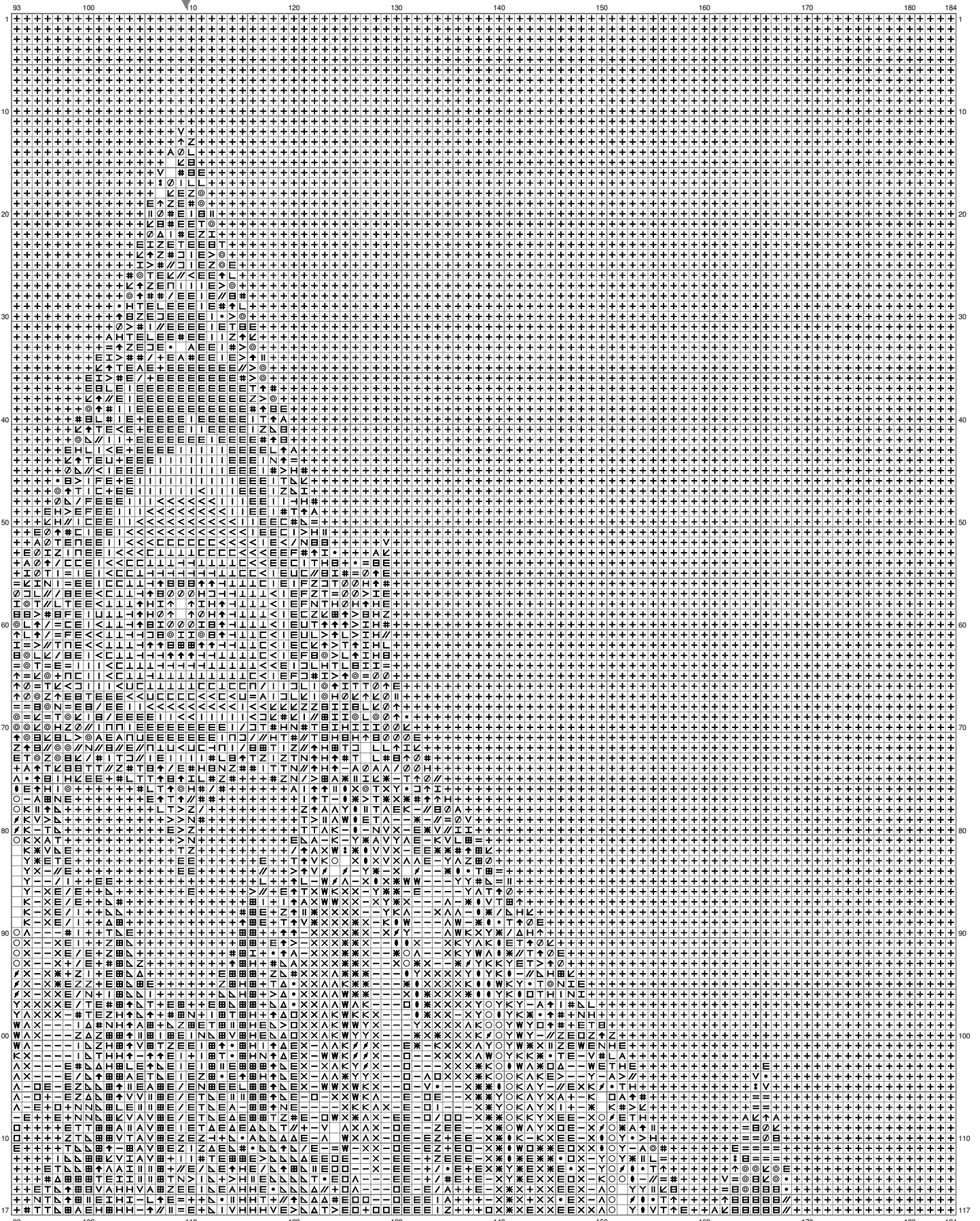


Blood Elf Emblem



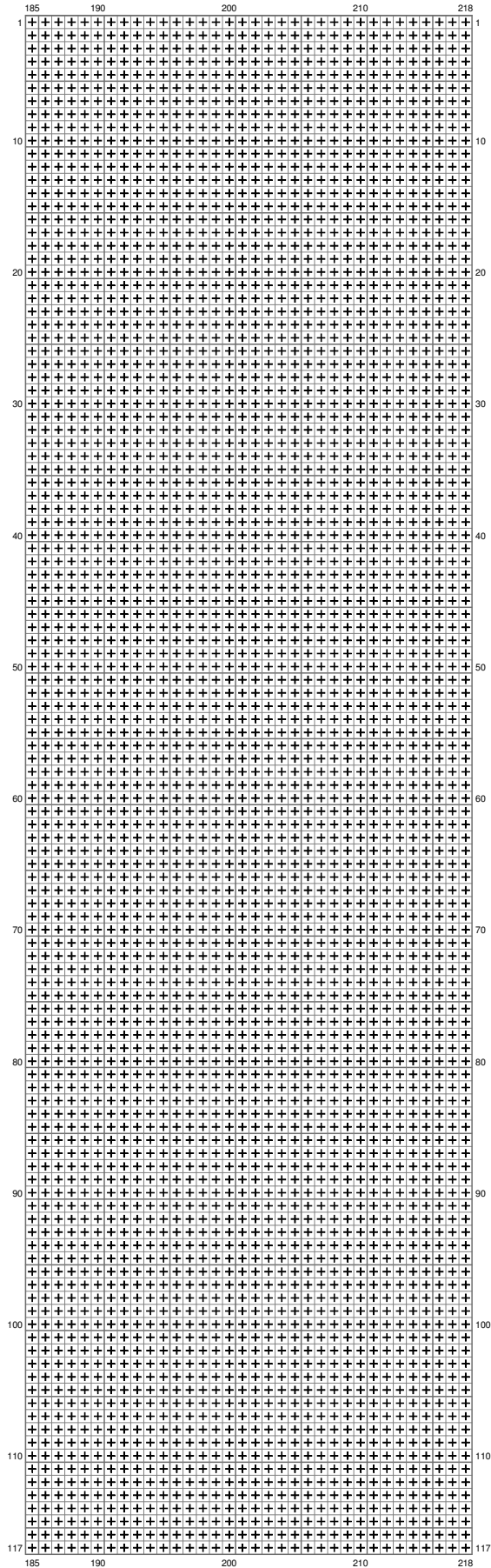
(This chart is printed using KG-Chart LE for Cross Stitch.)

Blood Elf Emblem



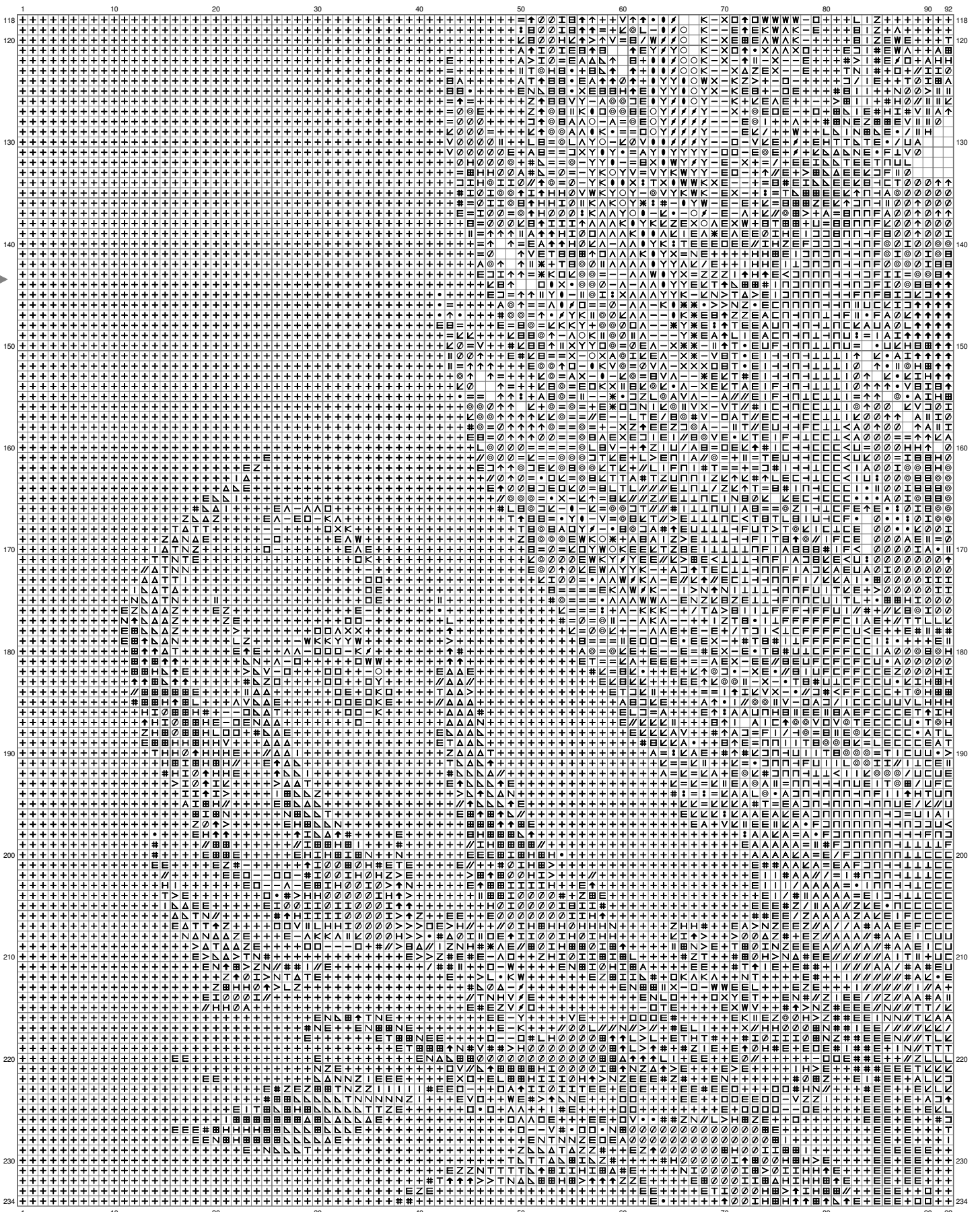
(This chart is printed using KG-Chart LE for Cross Stitch.)

Blood Elf Emblem



(This chart is printed using KG-Chart LE for Cross Stitch.)

Blood Elf Emblem



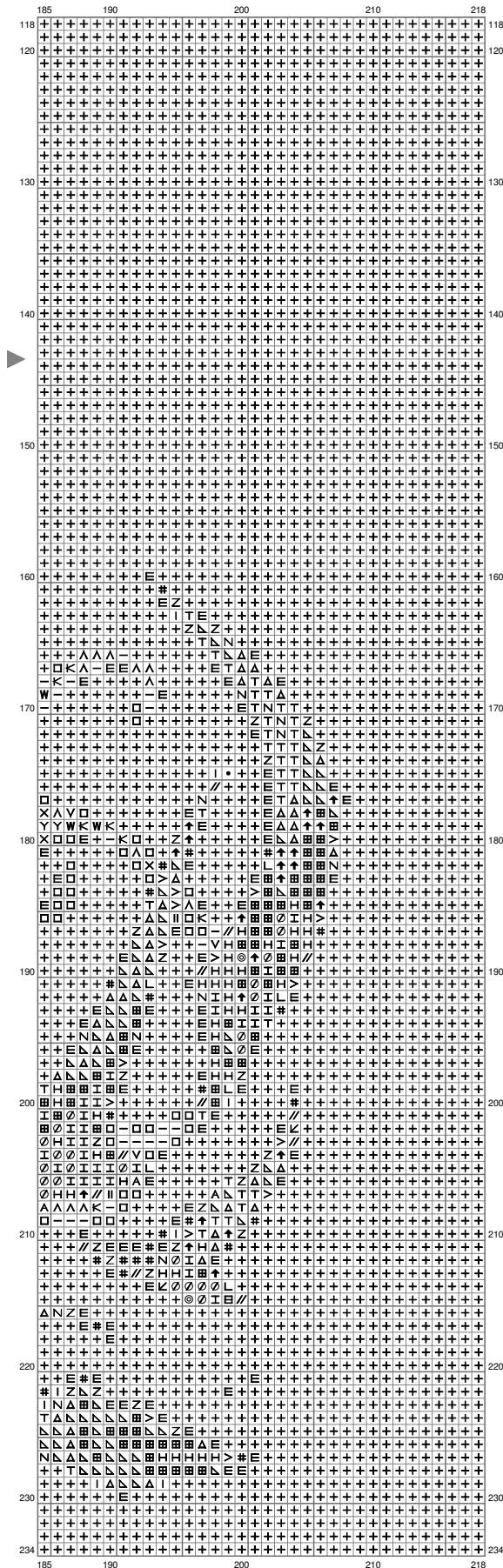
(This chart is printed using KG-Chart LE for Cross Stitch.)

Blood Elf Emblem



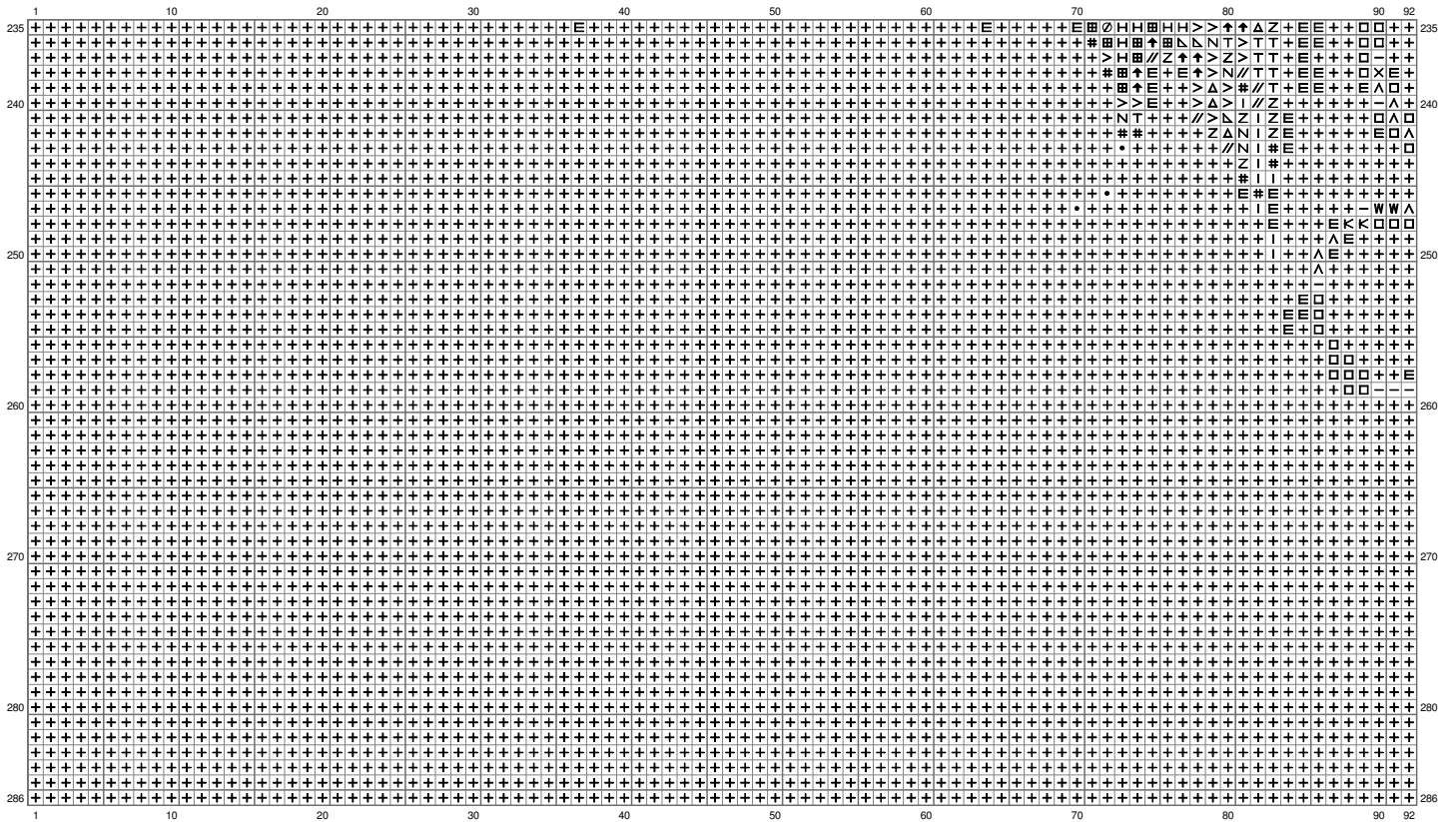
(This chart is printed using KG-Chart LE for Cross Stitch.)

Blood Elf Emblem

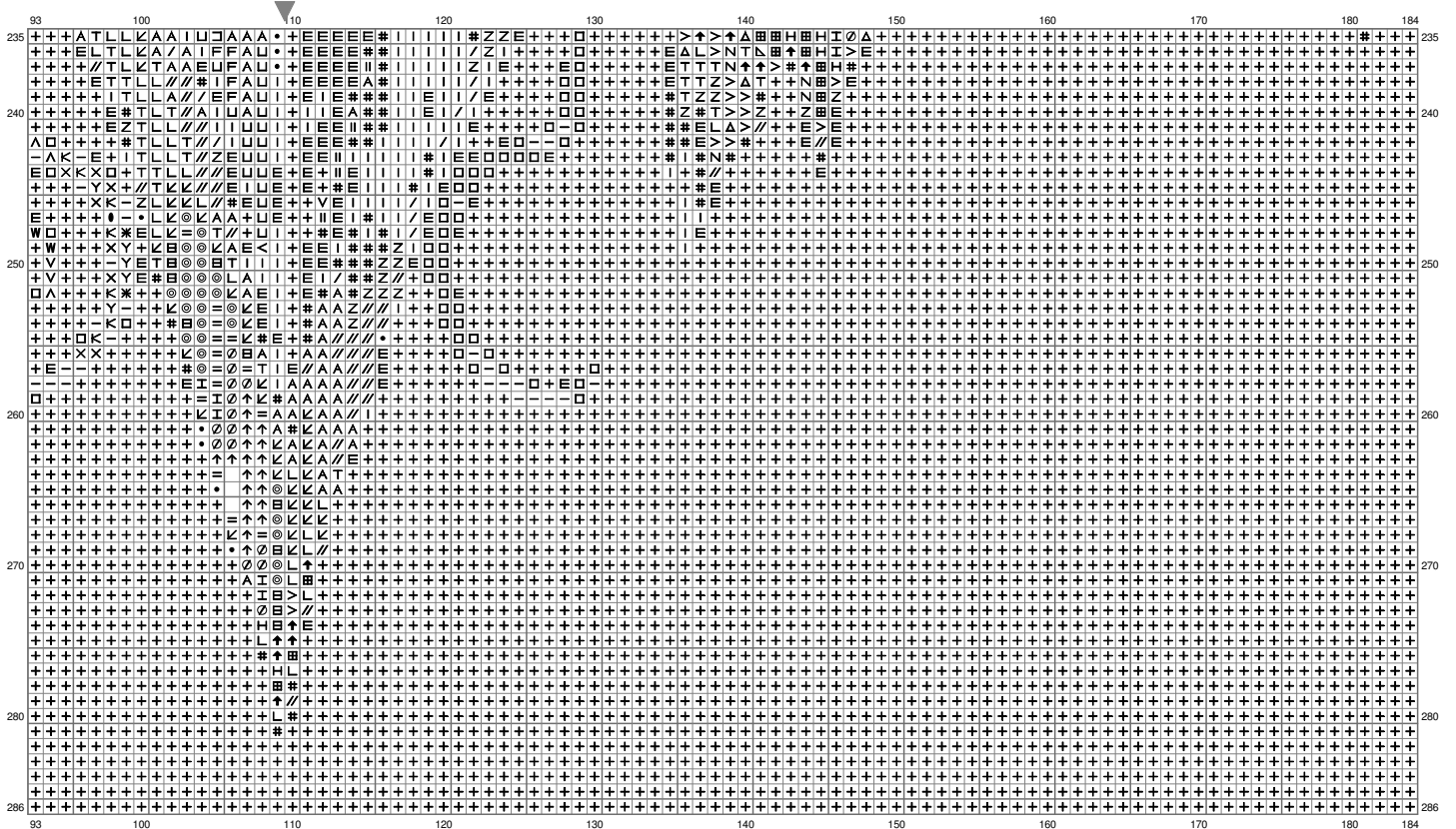


(This chart is printed using KG-Chart LE for Cross Stitch.)

Blood Elf Emblem

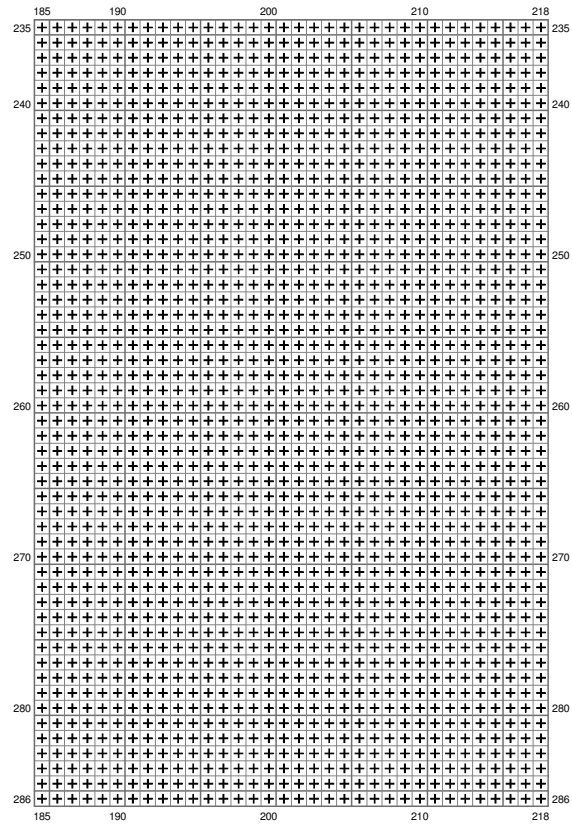


Blood Elf Emblem



(This chart is printed using KG-Chart LE for Cross Stitch.)

Blood Elf Emblem



(This chart is printed using KG-Chart LE for Cross Stitch.)

Blood Elf Emblem
















































Stitch Count:218w x 286h

Cloth:Aida Cloth's Color:White

Finished Size:61.52 cm x 80.71 cm (18 ct./inch)

Total 47 Colors

Color Table (DMC)

Cross Stitch					
	310	(42379 ct)		970	(159 ct)
	939	(2663 ct)		3705	(308 ct)
	890	(424 ct)		3852	(332 ct)
	699	(765 ct)		783	(330 ct)
	3847	(432 ct)		742	(465 ct)
	3809	(189 ct)		680	(349 ct)
	815	(1369 ct)		729	(464 ct)
	829	(588 ct)		728	(590 ct)
	3371	(243 ct)		977	(169 ct)
	3021	(162 ct)		444	(637 ct)
	501	(304 ct)		3854	(375 ct)
	3781	(211 ct)		973	(530 ct)
	498	(469 ct)		307	(525 ct)
	304	(246 ct)		3810	(218 ct)
	300	(213 ct)		502	(167 ct)
	918	(489 ct)		597	(235 ct)
	975	(314 ct)		3846	(167 ct)
	3829	(466 ct)		3032	(42 ct)
	434	(532 ct)		3766	(118 ct)
	666	(253 ct)		162	(128 ct)
	919	(194 ct)		3855	(324 ct)
	782	(770 ct)		445	(1002 ct)
	3801	(240 ct)		738	(326 ct)
				3823	(257 ct)