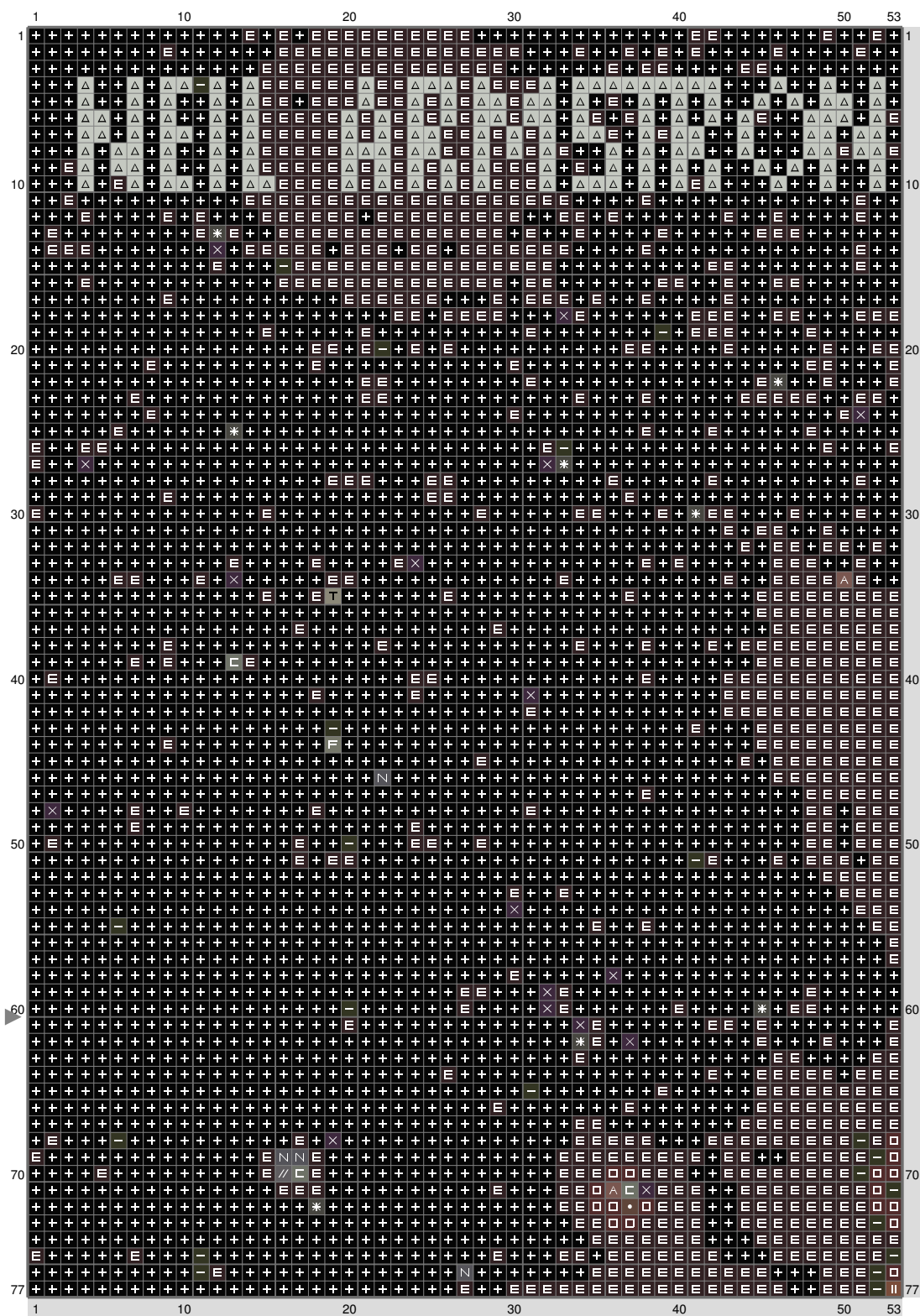


Karl Pilkington

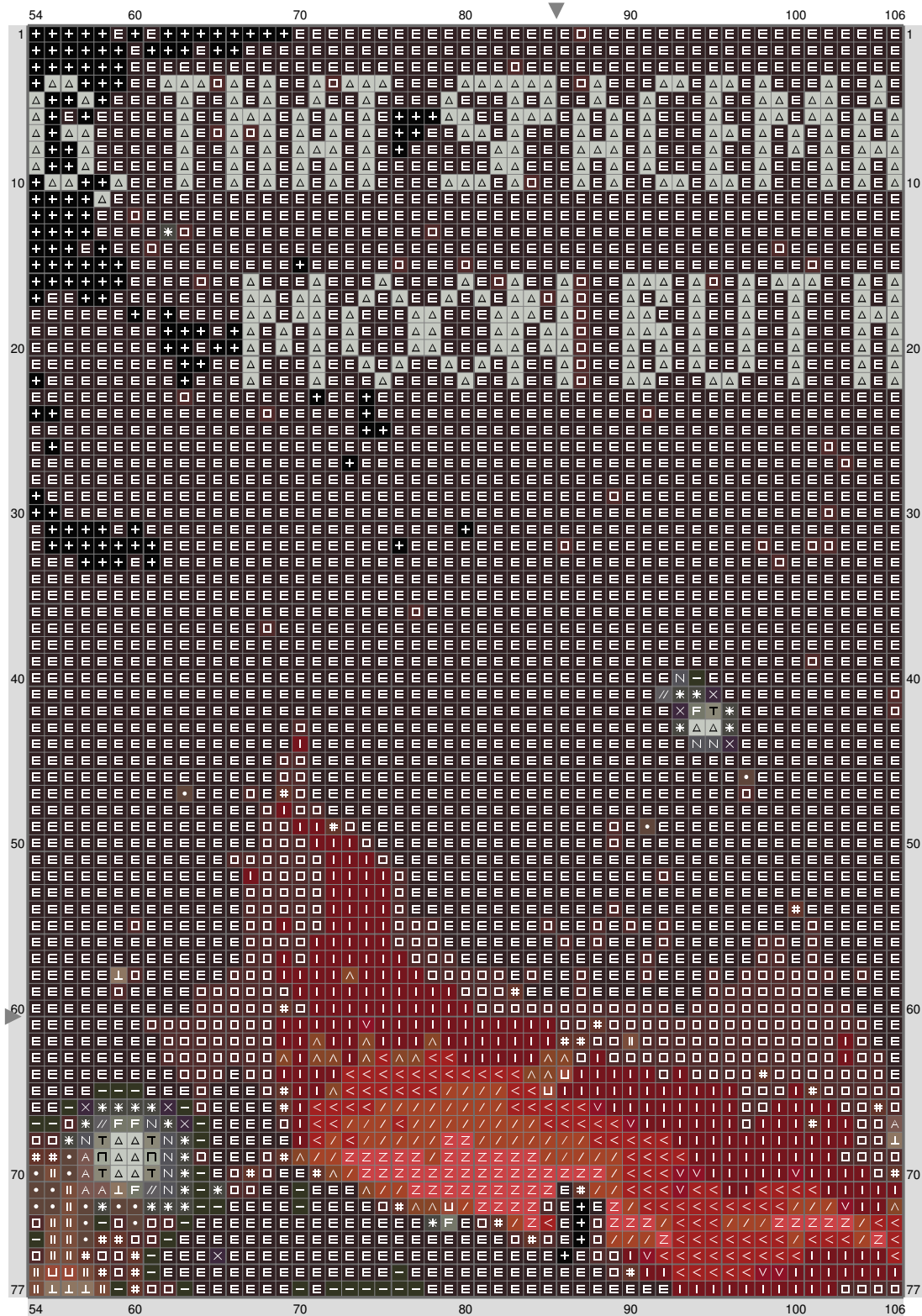


## Karl Pilkington



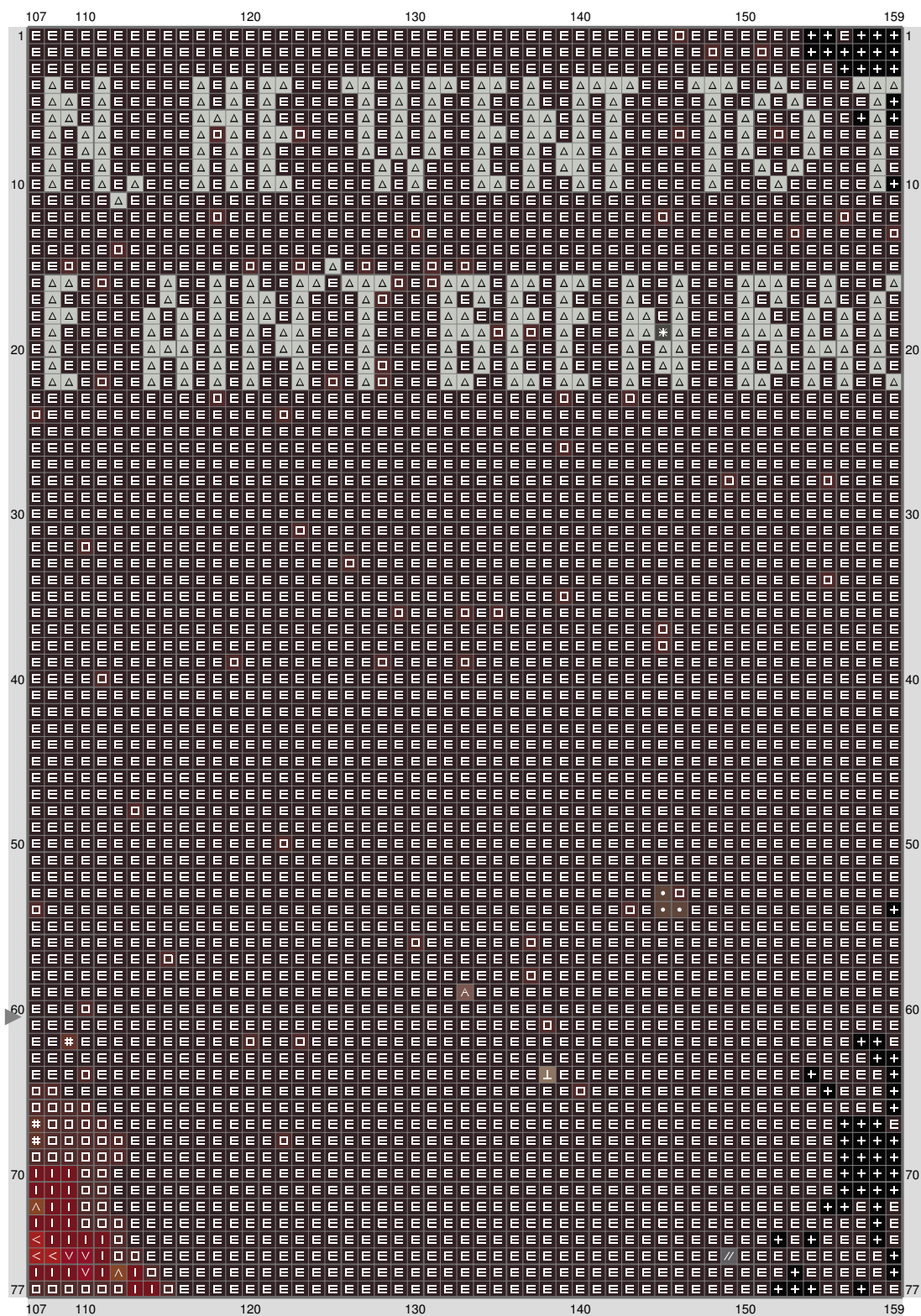
(This chart is printed using KG-Chart LE for Cross Stitch.)

# Karl Pilkington



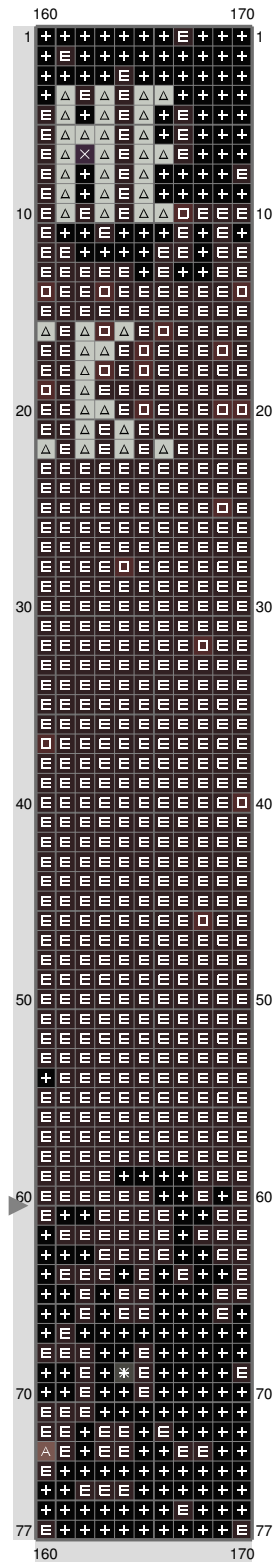
(This chart is printed using KG-Chart LE for Cross Stitch.)

## Karl Pilkington



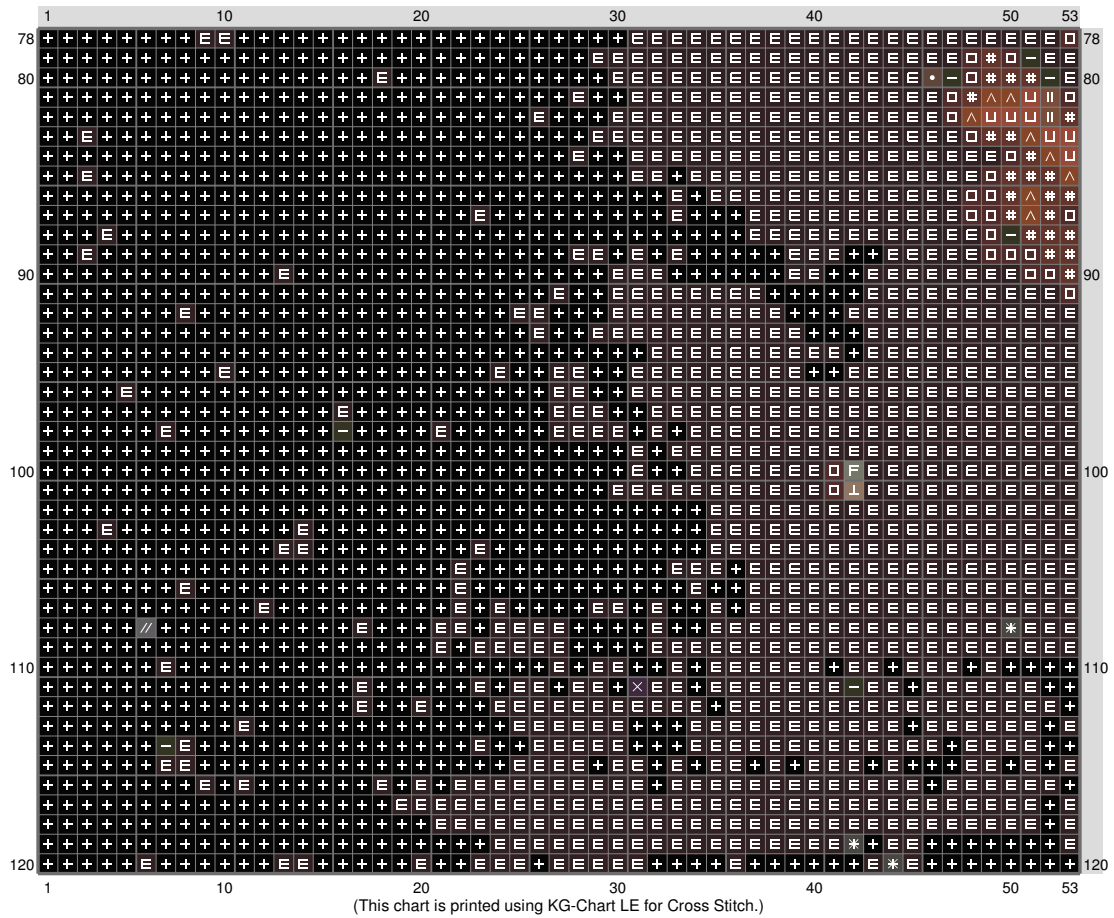
(This chart is printed using KG-Chart LE for Cross Stitch.)

# Karl Pilkington

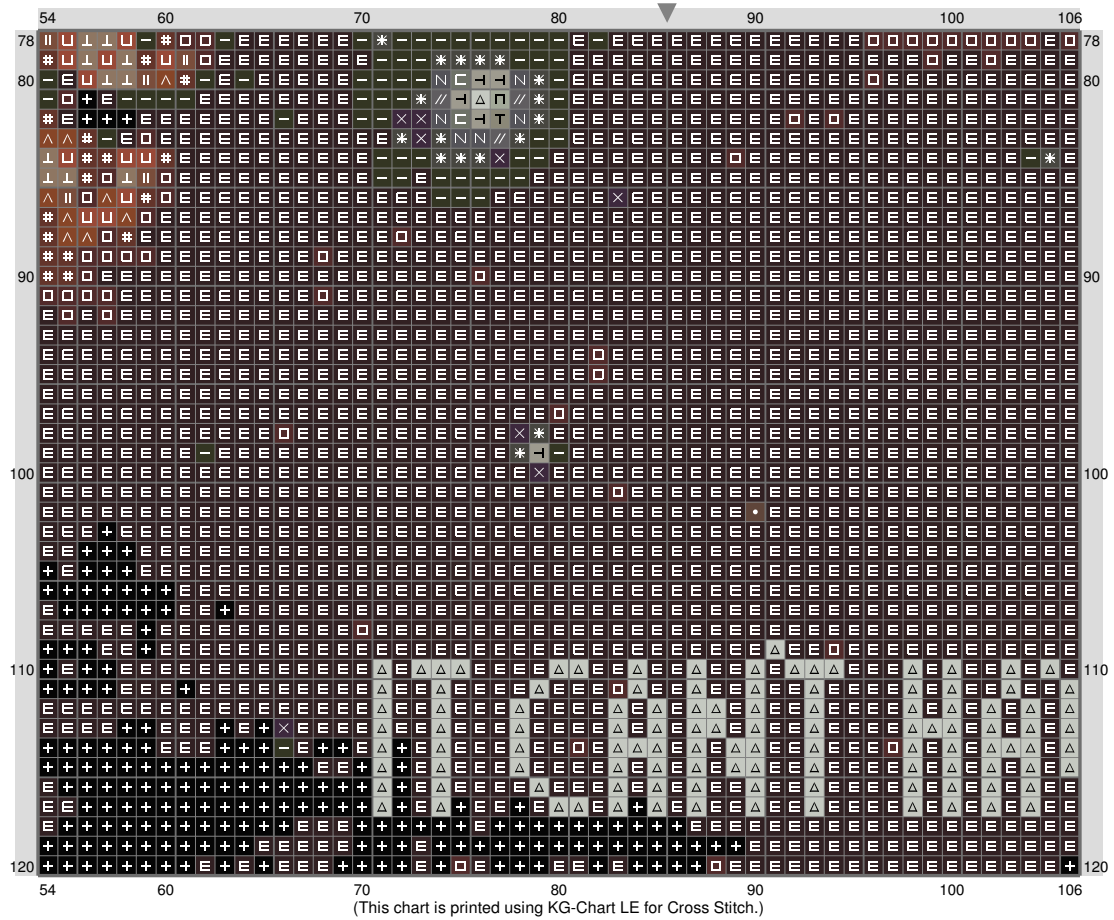


(This chart is printed using KG-Chart LE for Cross Stitch.)

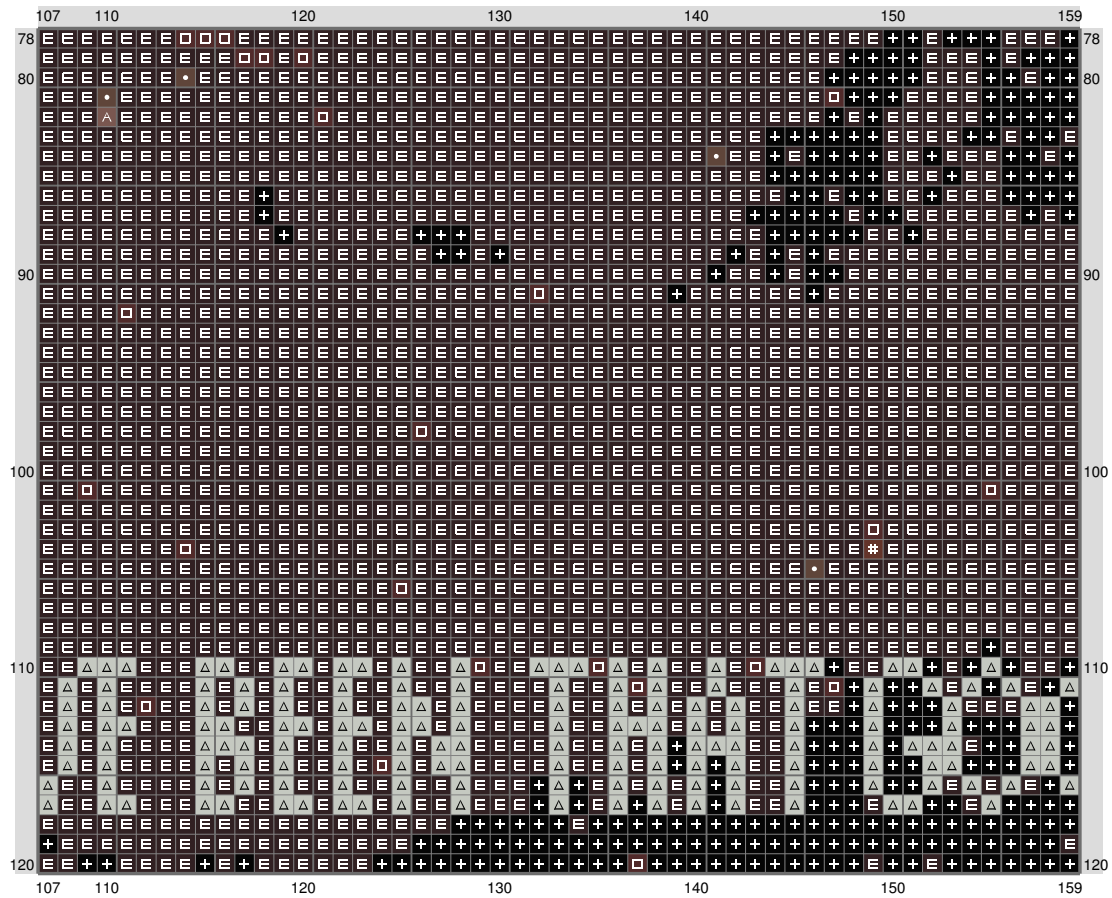
# Karl Pilkington



# Karl Pilkington



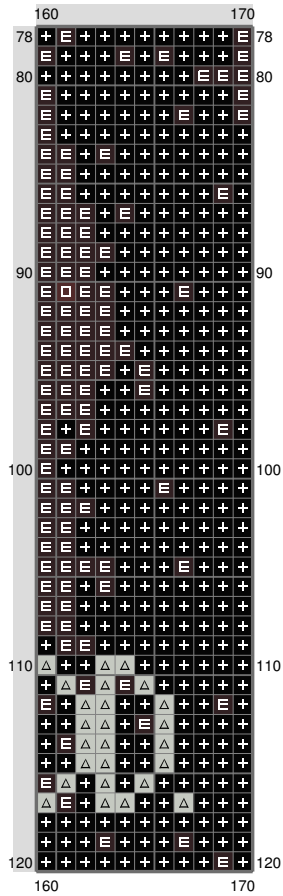
# Karl Pilkington



(This chart is printed using KG-Chart LE for Cross Stitch.)



# Karl Pilkington



Stitch Count: 170w x 120h  
 Finished Size: 47.97 cm x 33.86 cm (18 ct./inch)  
 Cloth: Aida  
 Cloth's Color: White  
 # of colors: 26 Colors

## Color Table (DMC)

### Cross Stitch

	310	(5461 ct)
	939	(12323 ct)
	3371	(592 ct)
	934	(123 ct)
	823	(34 ct)
	3021	(54 ct)
	815	(244 ct)
	938	(77 ct)
	3031	(26 ct)
	816	(14 ct)
	300	(40 ct)
	433	(22 ct)
	3777	(106 ct)
	780	(24 ct)
	918	(66 ct)
	347	(53 ct)
	3799	(19 ct)
	535	(9 ct)
	839	(10 ct)
	645	(5 ct)
	3787	(7 ct)
	640	(7 ct)
	3790	(18 ct)
	646	(5 ct)
	3022	(3 ct)
	3023	(1058 ct)

(This chart is printed using KG-Chart LE for Cross Stitch.)