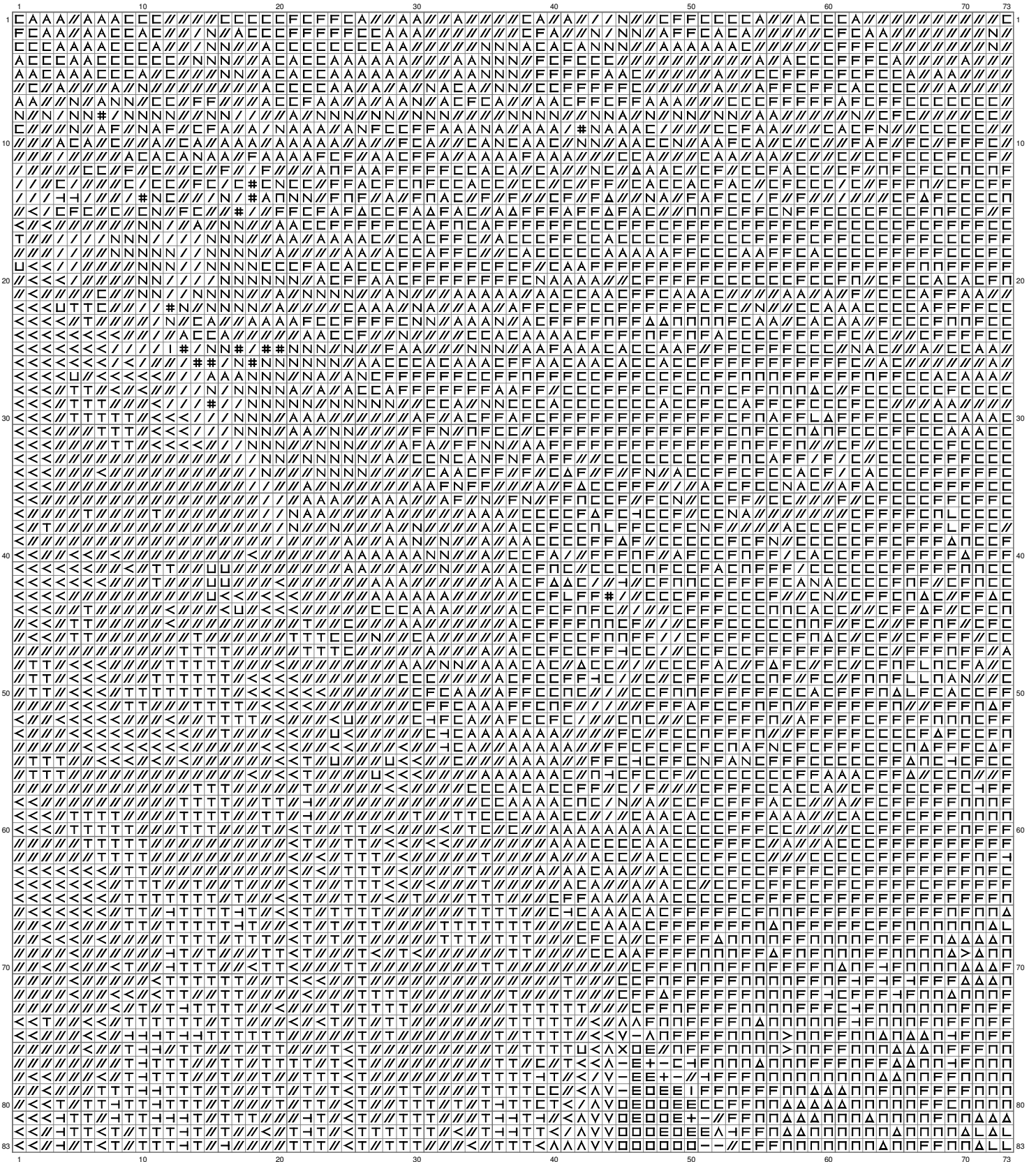


Twilight Princess- Two Worlds

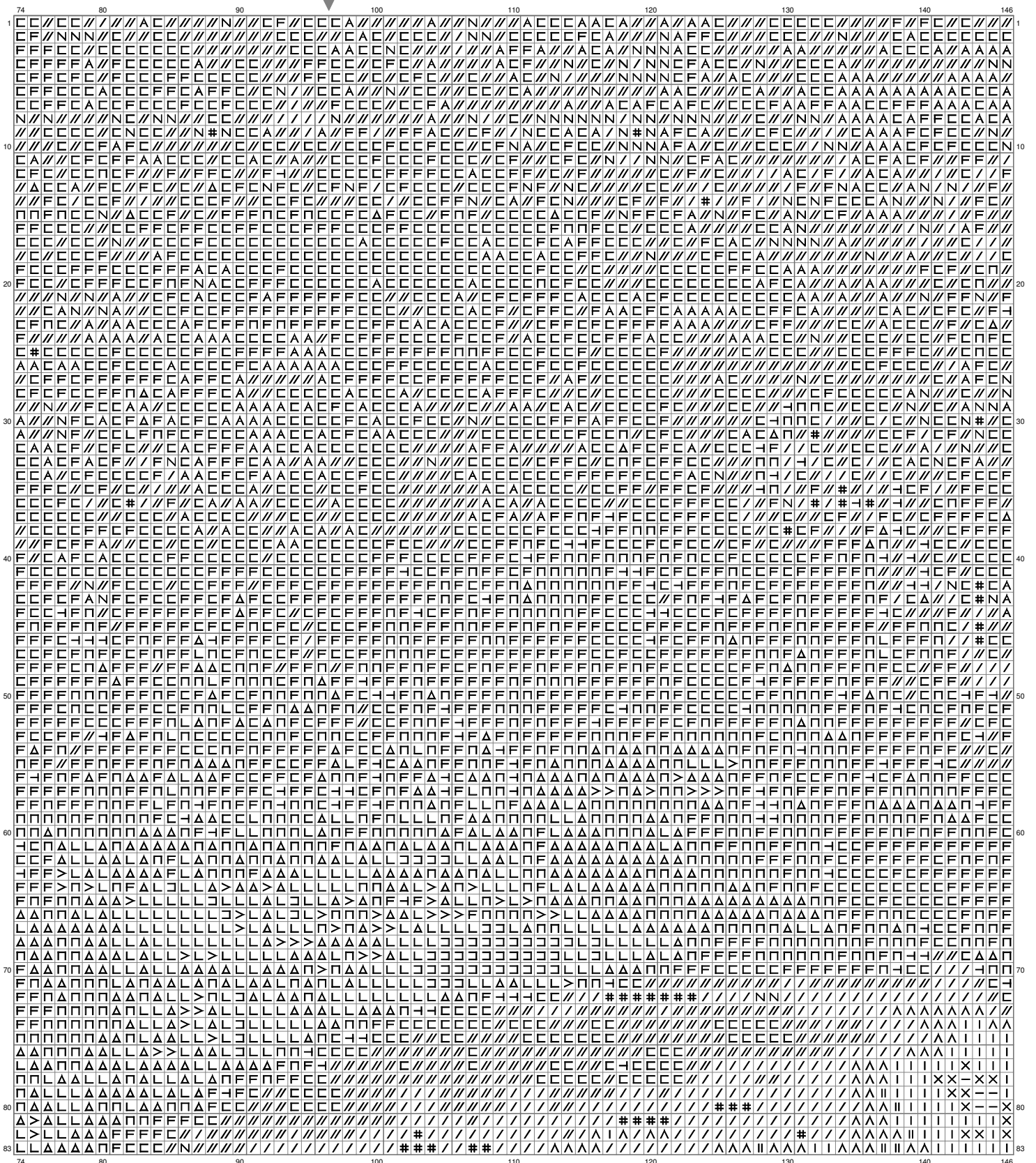


Twilight Princess- Two Worlds

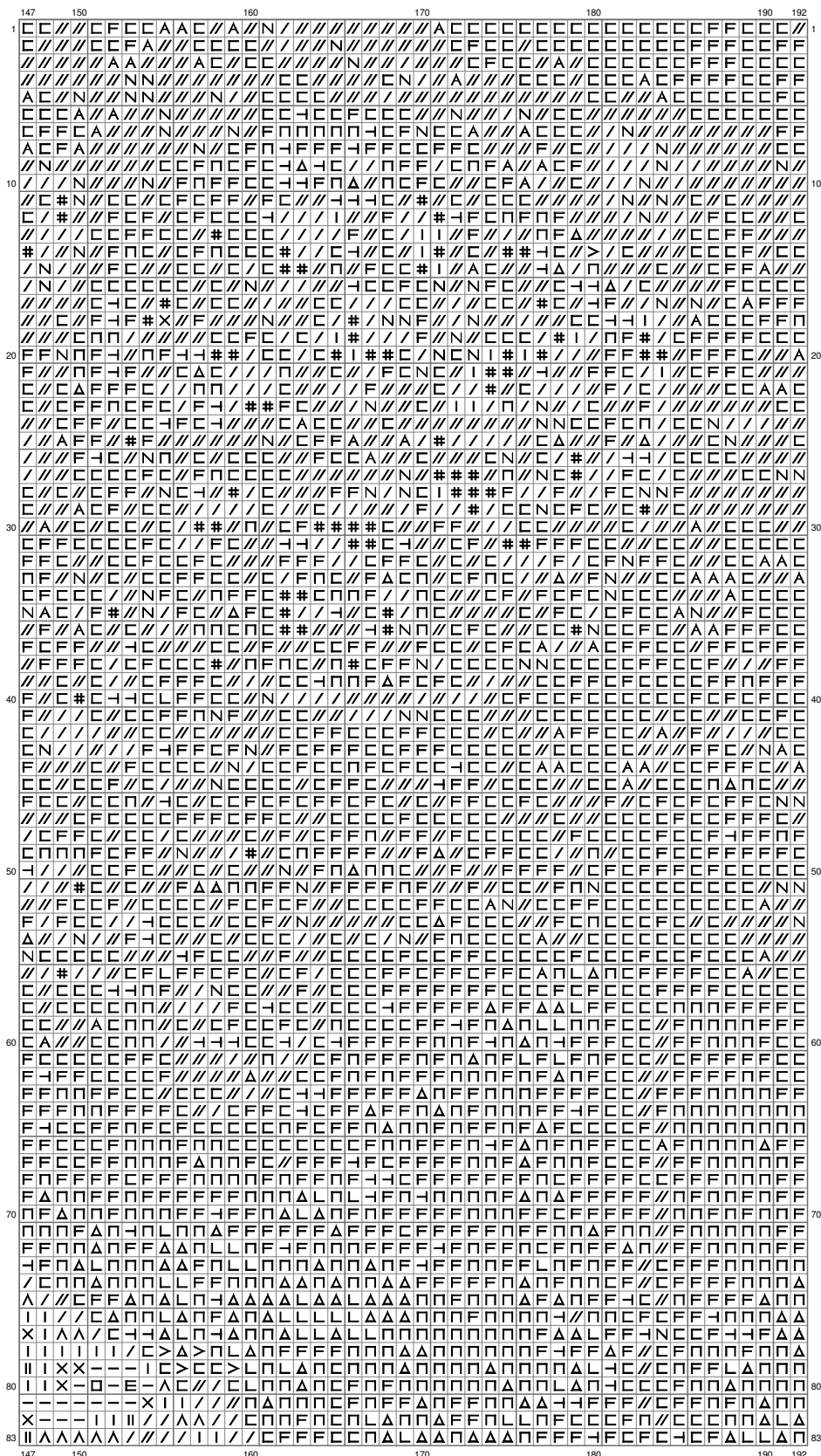


(This chart is printed using KG-Chart LE for Cross Stitch.)

Twilight Princess- Two Worlds



Twilight Princess- Two Worlds



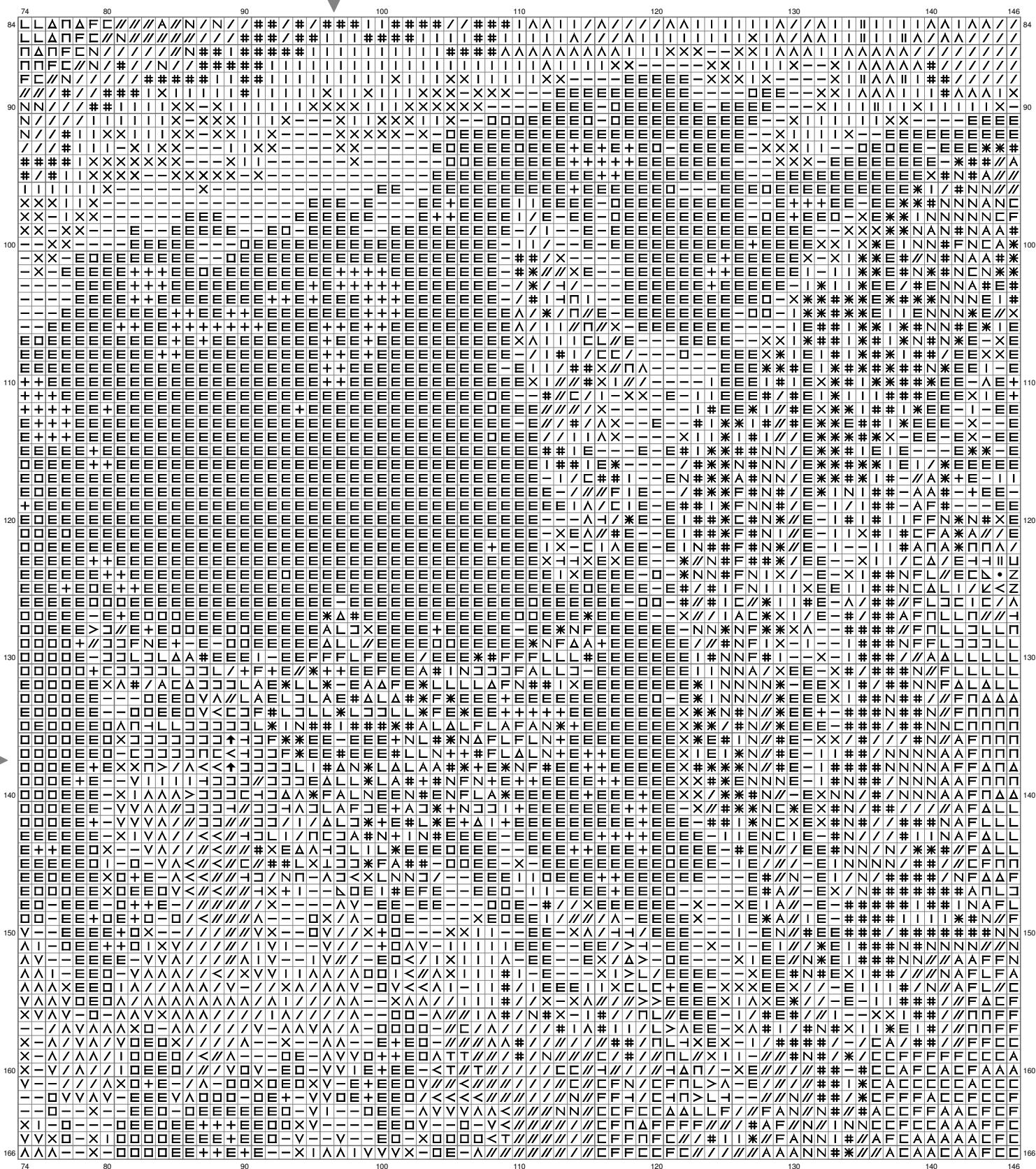
(This chart is printed using KG-Chart LE for Cross Stitch.)

Twilight Princess- Two Worlds



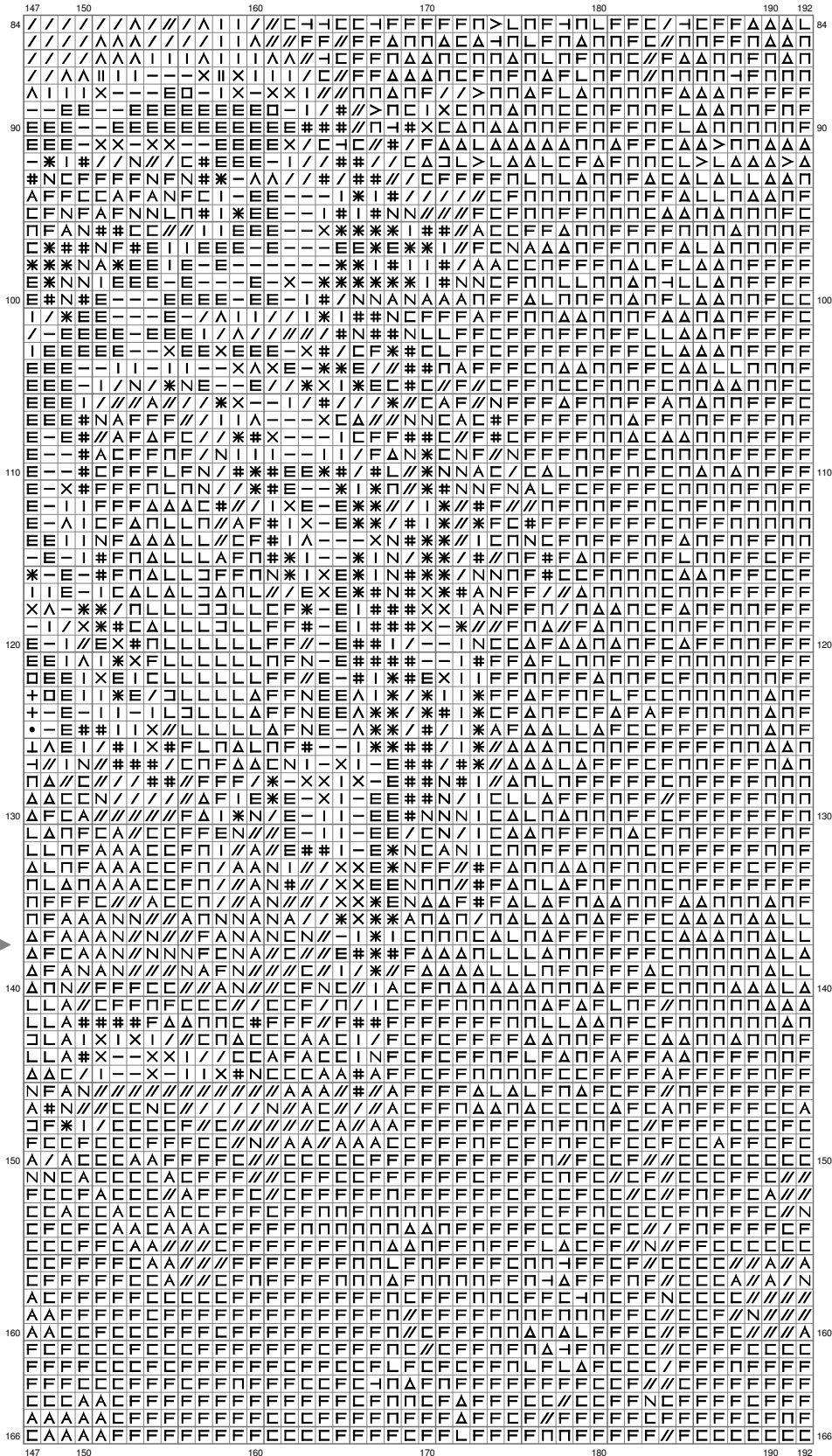
(This chart is printed using KG-Chart LE for Cross Stitch.)

Twilight Princess- Two Worlds



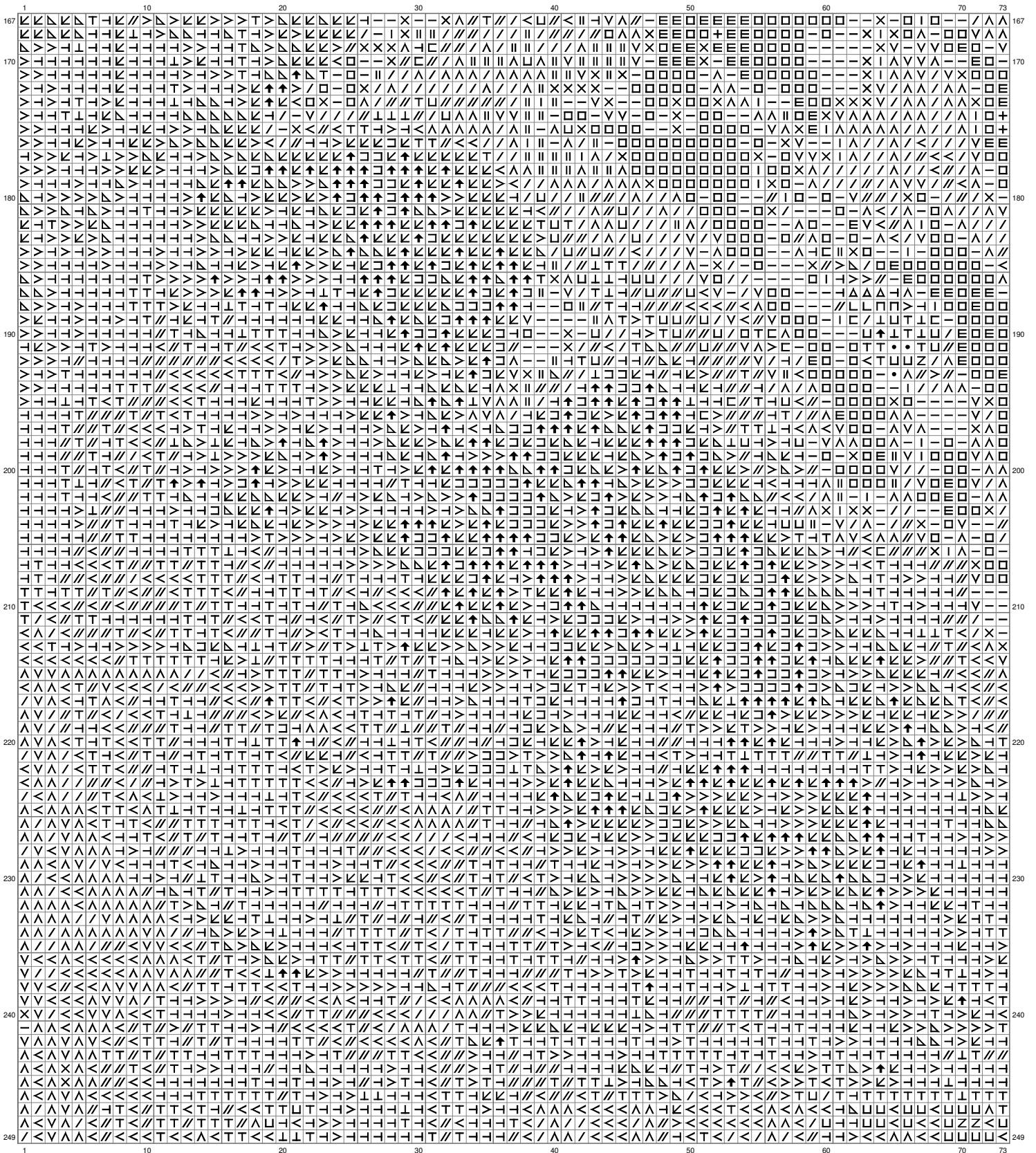
(This chart is printed using KG-Chart LE for Cross Stitch.)

Twilight Princess- Two Worlds



(This chart is printed using KG-Chart LE for Cross Stitch.)

Twilight Princess- Two Worlds



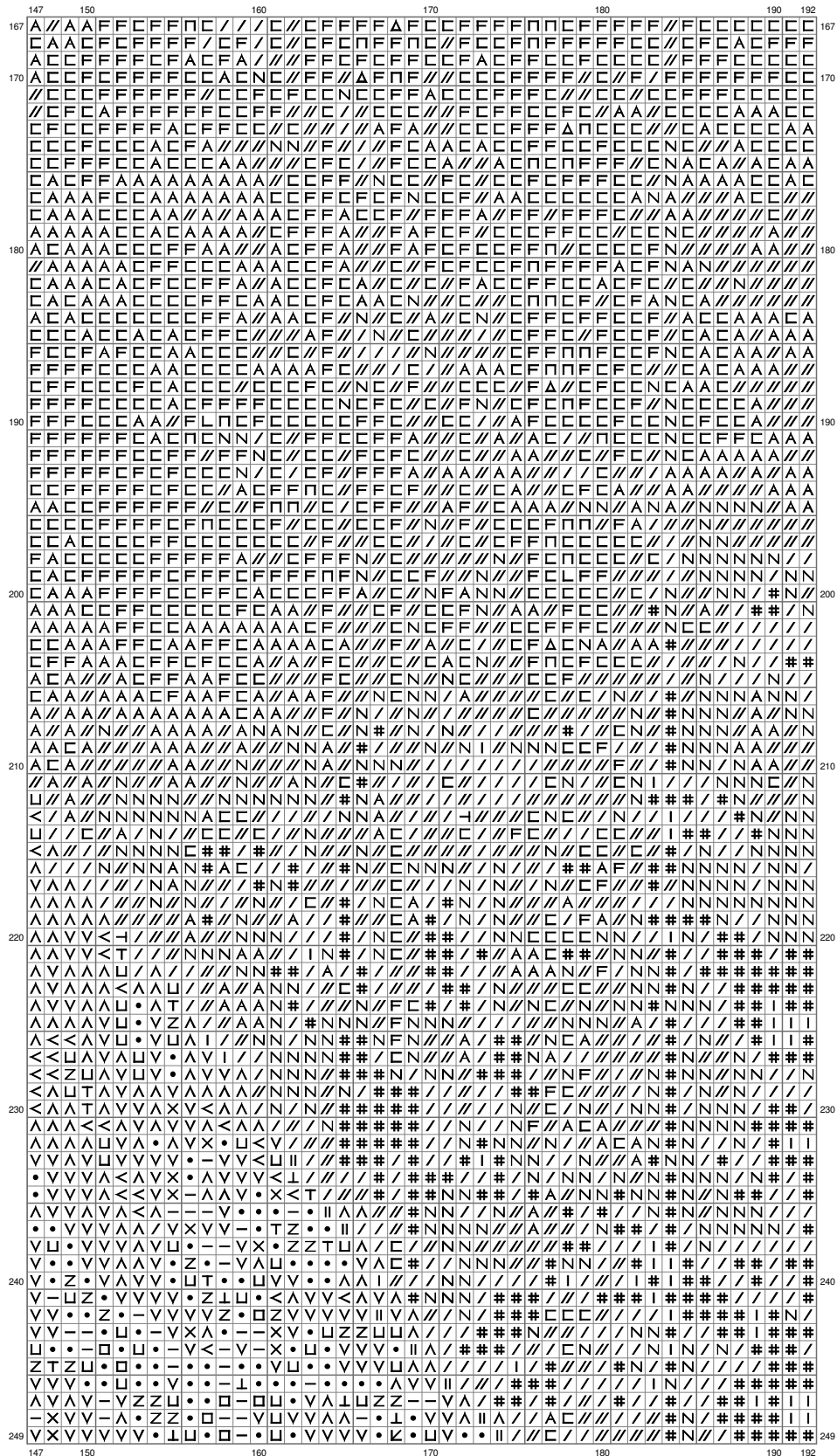
(This chart is printed using KG-Chart LE for Cross Stitch.)

Twilight Princess- Two Worlds



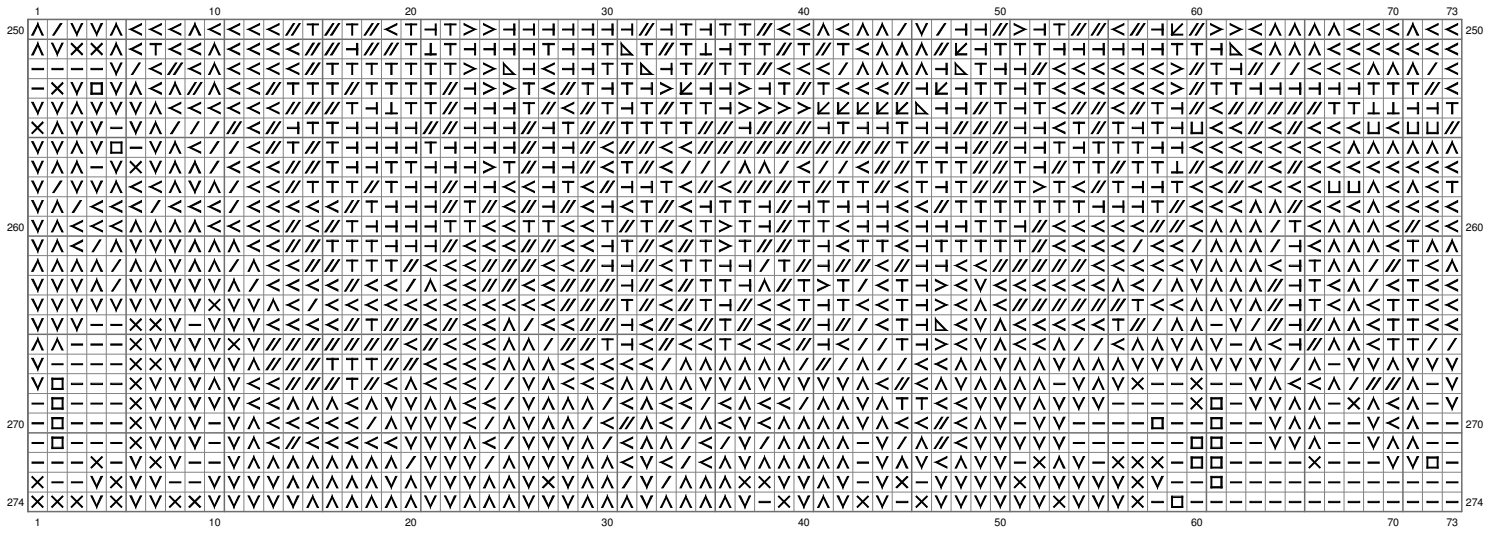
(This chart is printed using KG-Chart LE for Cross Stitch.)

Twilight Princess- Two Worlds



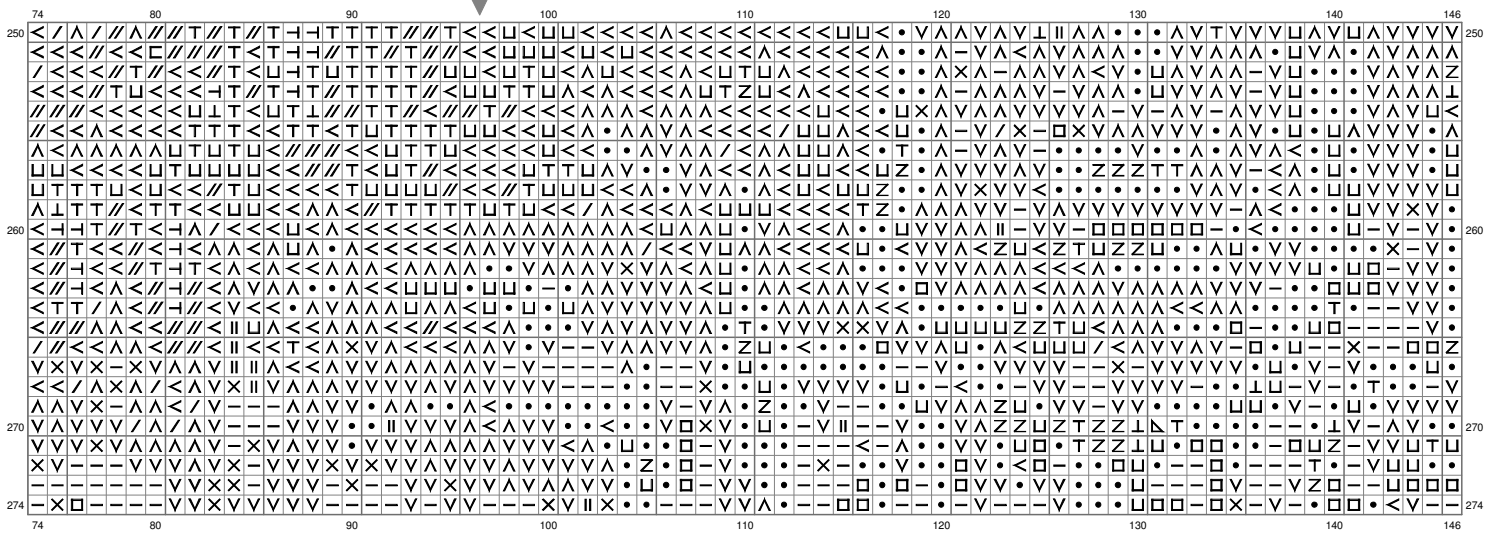
(This chart is printed using KG-Chart LE for Cross Stitch.)

Twilight Princess- Two Worlds



(This chart is printed using KG-Chart LE for Cross Stitch.)

Twilight Princess- Two Worlds



Twilight Princess- Two Worlds

147	150	160	170	180	190	192				
250	Λ V V X V X V V Λ Z • - Λ U • U • V V □ • Λ - V V • • X Λ // C // C // C // C // # # N / / # # / /						250			
U • • V X - V V Z • Z • < < V U U • • U U • • V V • • □ // / / / / N // / / I / / # # # / / /										
T Z Z U V V X - • • T T V V V - • • U • • - Λ < - • □ • U - // / / N // / / # / / # # # / / /										
• • - Λ X - - U • • Z • V V - - V • • V V Λ • • U □ • • □ V / N N / / / / / # / / # # / / /										
< V - Λ Λ V V V T • V < U • V U Λ V • Λ Λ V - • T • - • V V V I Λ / # / / # / / # # # I I #										
< V X V - V - • U V V V U U • • - V • • V V • Z • • Λ • V V V U Z Λ // N / * / # # # # Λ I I										
V V V V - • • U • V V V • U U U • • U U U • • - • U V V □ • Λ Λ // N I # # # # I I I I										
• • • - • • Z • V V • • • • • V V Λ Λ V - V - • • - V - T • - Λ // N / # / / # I I I I										
Z • • U U Z • □ V Λ U • • • • - V V V V - < < - □ U U V V X / Λ // # N / # I I # #										
Z • U • • • - V V < I I V V V V • • • - V V < Z U Λ V V • U • • V Λ V X // I / / I I # I I										
260	Λ • • V V V V V Λ • V X V V V V - • • • • Z • - V V • Λ V - • U U U - I // I / / # # I # # I					260				
T • V V V V V U • X X V X - - • • □ Z • • V V < • V V • U • • • U V Λ I / / # # # #										
T • V - X V V V U X V • Λ < Λ - V • U - U V • • U • V • U U V V V V • X I I # / / # # #										
T • V - V - - U • V Λ Λ V - • • - • U • • • • V V • U • • • Λ V V □ • Z U I I # # / # # #										
U - - X V • • U • U V V V • • - • Λ • U • • Λ • • - • Λ U U Λ Λ < < • • - I / / # # / #										
• - X V - • U • • □ V V V • • V • V V U • V • U U • • V V • Z T • - - V V / / # # N N										
• • - V □ U • V • • - - V - U • • Λ V V • Z • • • • U < • V • • V V - U T U Λ / / # N N N										
• • • □ U • - V • • • • U • • Z • Λ • • • • U • • • < • • V V V Λ • • • Λ // N N N N										
V • • T U □ • - Z • U • U Λ U • < • U Λ Λ T Z • U U < • V □ • • V V U • □ • U U I I // N N N										
V - • Λ • - • • U U • □ < < • • • V Z • V V < • • • V • • • • Z Λ U V • U U V V V V / N # #										
270	- V - • Z V V • • • • • U • • • • • V V • Z • < - □ U • • Λ • • U - • • Z U I I / # #					270				
• V - - U - □ • V • • • < • U • • • U • V V • Z • T - - □ T • • Λ • • U • V U U • U I I Λ Λ										
• V V - • • - • V Λ • U • • • • • • U Z T U • • Z - - □ T • • Z • • • • U V V Λ < V Λ /										
X V - □ • V - • V • • - < V • • V • Λ • • • - V U Λ V X □ U • • U V Λ Λ V U • V V V < I I Λ										
274	- V - □ V V - • V • • • Λ V V Λ V V Λ U • • V Λ U V V X □ U V • < V Λ Λ V U • • V • • Λ X V					274				
147	150	160	170	180	190	192				

(This chart is printed using KG-Chart LE for Cross Stitch.)

Twilight Princess- Two Worlds

Stitch Count:192w x 274h

Cloth:Linen Cloth's Color:White

Finished Size:34.83 cm x 49.71 cm (28 ct./inch)

Total 32 Colors

Color Table (DMC)

Cross Stitch

	939	(335 ct)
	934	(2783 ct)
	500	(2768 ct)
	3021	(2380 ct)
	935	(919 ct)
	936	(281 ct)
	3362	(916 ct)
	3781	(1029 ct)
	924	(775 ct)
	3799	(1489 ct)
	535	(2150 ct)
	520	(306 ct)
	317	(2489 ct)
	3768	(698 ct)
	3787	(2313 ct)
	502	(115 ct)
	3790	(1243 ct)
	640	(6580 ct)
	611	(1742 ct)
	522	(4734 ct)
	3032	(4749 ct)
	926	(2361 ct)
	503	(190 ct)
	3022	(2628 ct)
	642	(2023 ct)
	3782	(977 ct)
	523	(1026 ct)
	3817	(405 ct)
	524	(598 ct)
	927	(836 ct)
	318	(406 ct)
	3024	(364 ct)