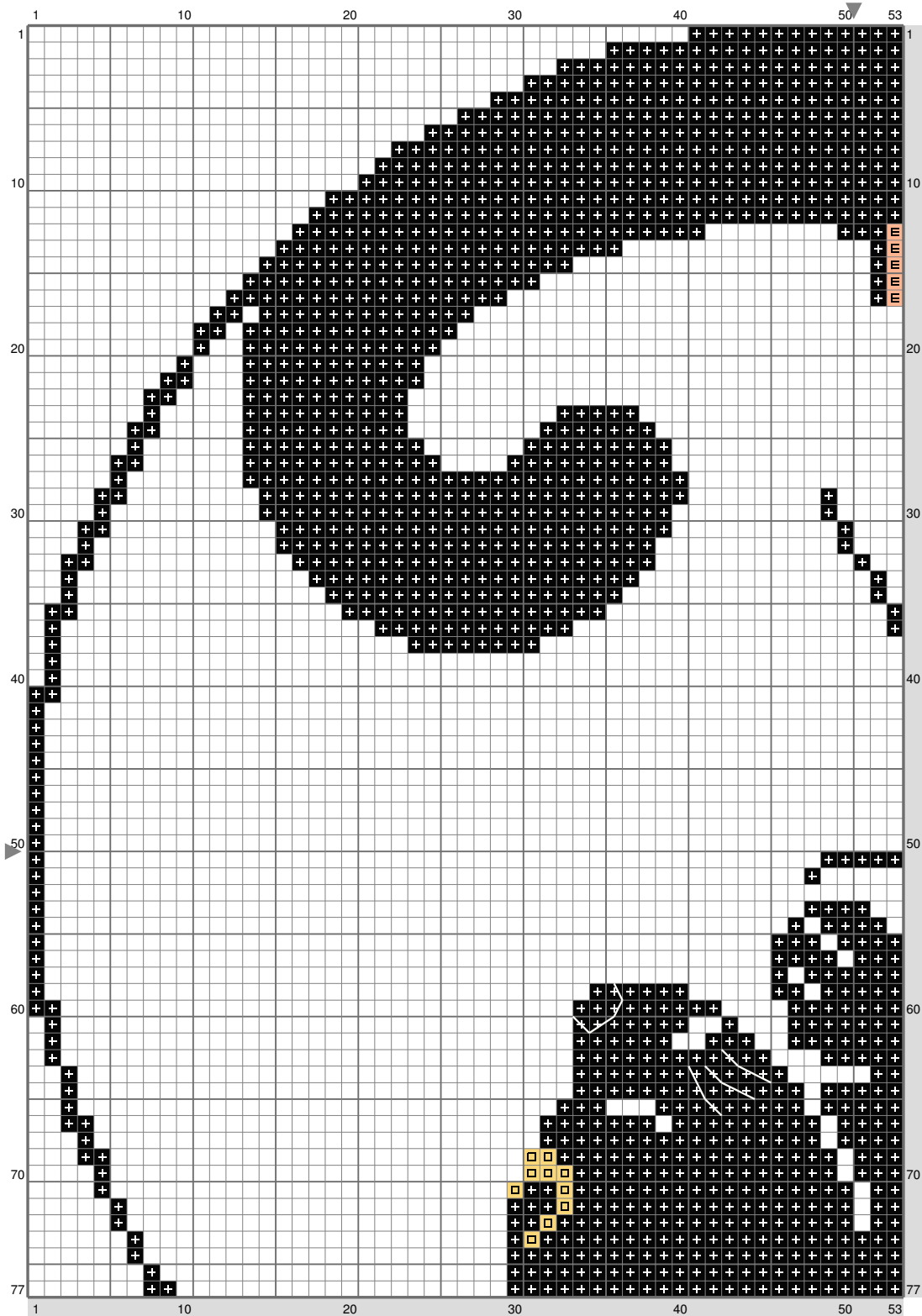
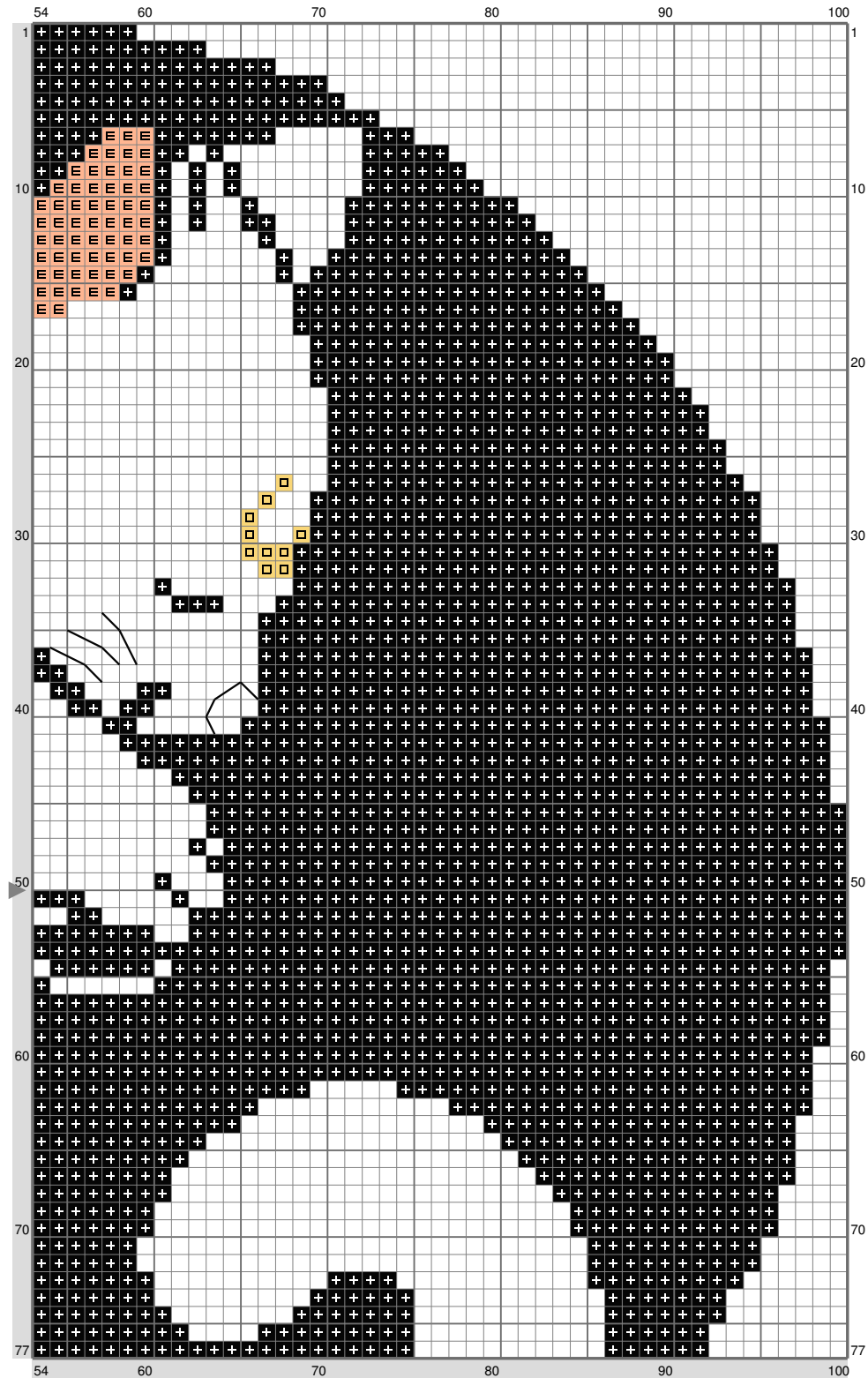


Luna ans Artemis



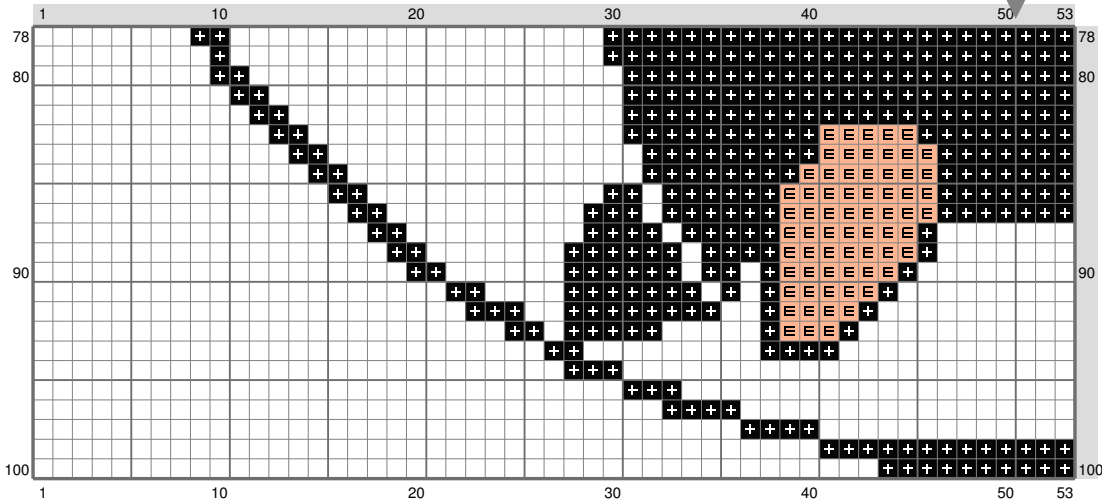
(This chart is printed using KG-Chart LE for Cross Stitch.)

Luna ans Artemis

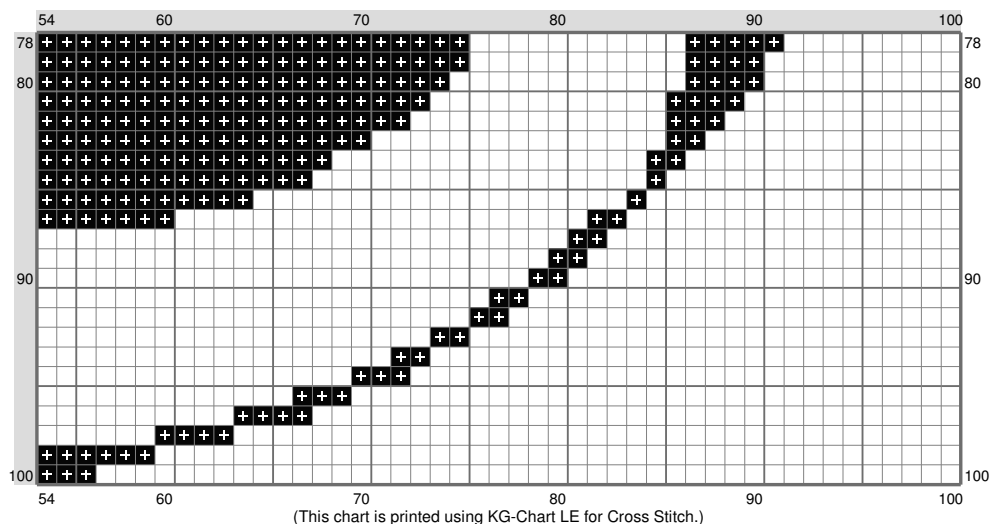


(This chart is printed using KG-Chart LE for Cross Stitch.)

Luna ans Artemis



Luna ans Artemis



Stitch Count: 100w x 100h

Finished Size: 18.14 cm x 18.14 cm (28 ct./inch)

Cloth: Linen

Cloth's Color: White

of colors: 4 Colors

Color Table (DMC)

Cross Stitch

310 (3952 ct)

3856 (130 ct)

743 (20 ct)

Backstitch

310 (10 ct)

BLANC (10 ct)