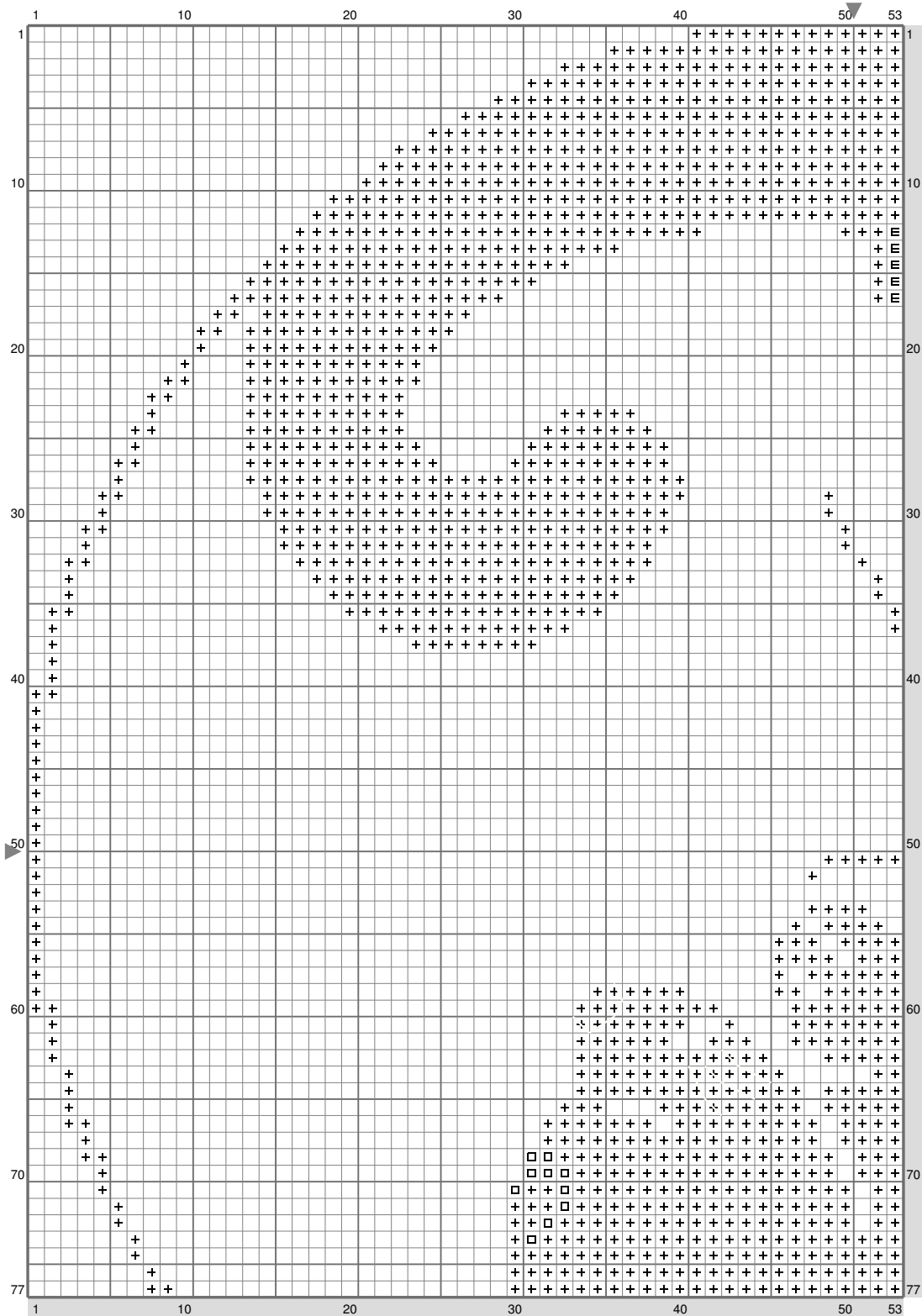
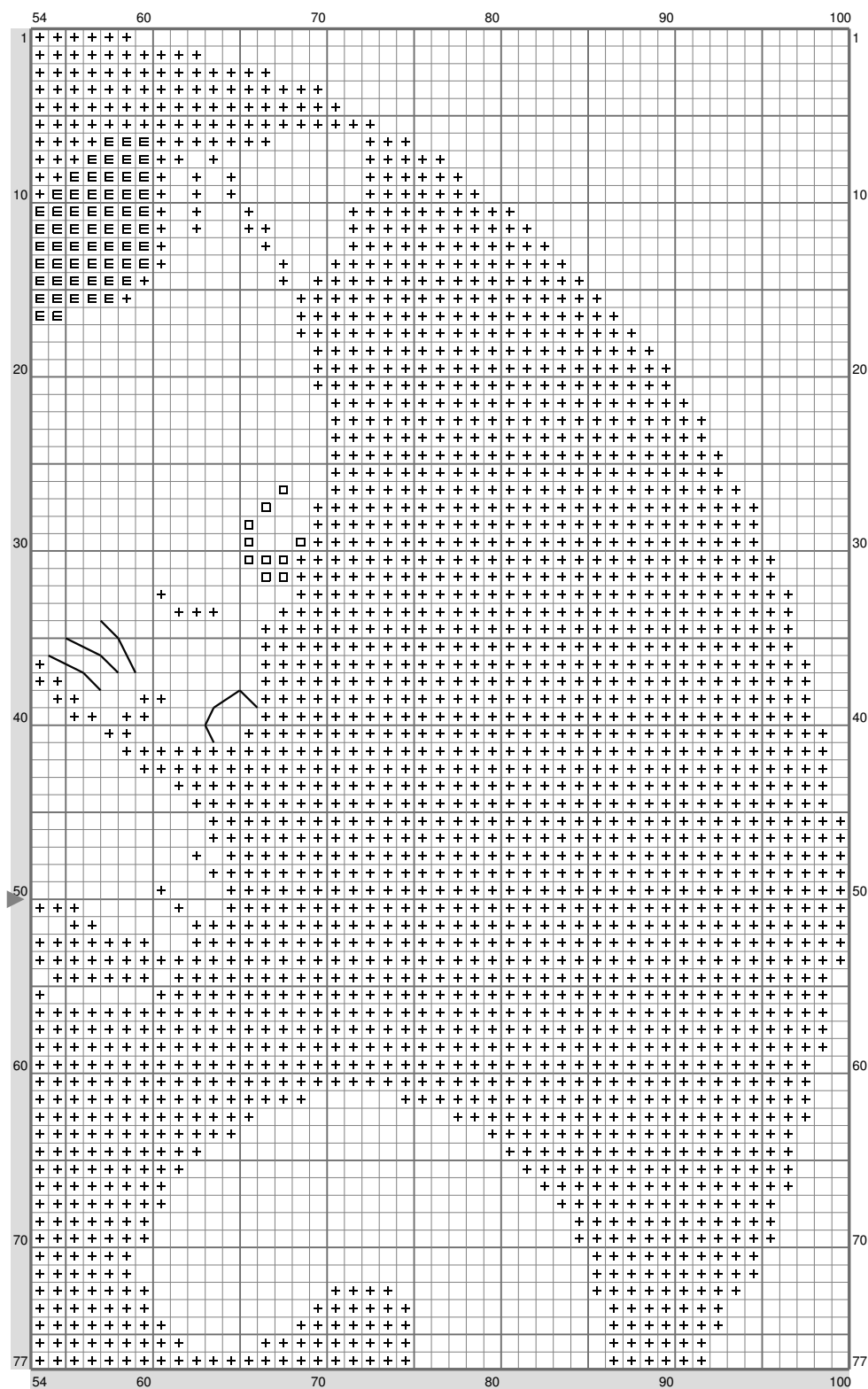


Luna ans Artemis



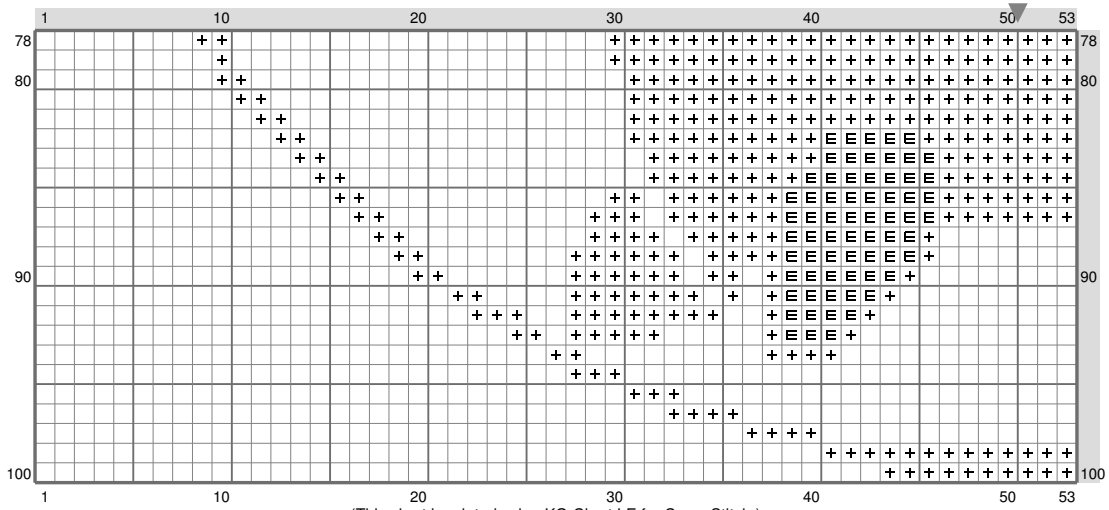
(This chart is printed using KG-Chart LE for Cross Stitch.)

Luna ans Artemis



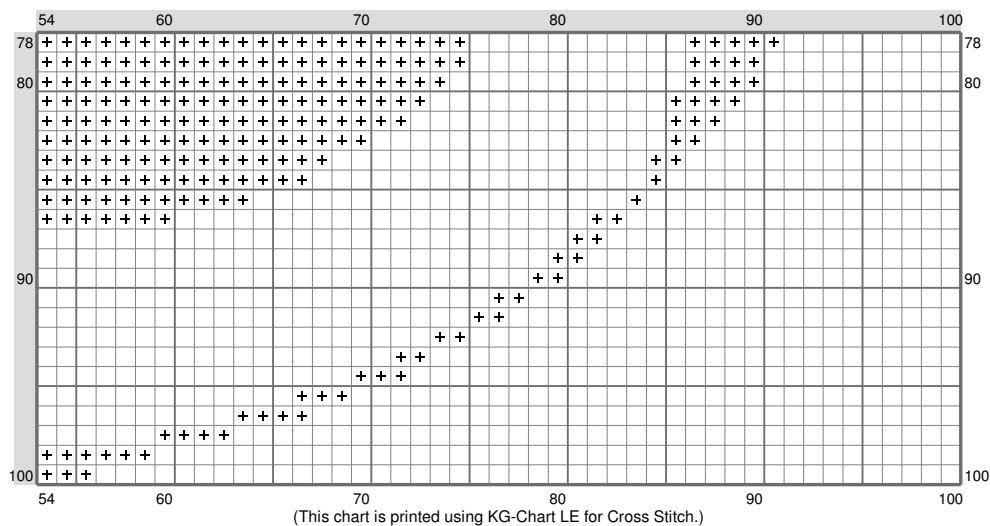
(This chart is printed using KG-Chart LE for Cross Stitch.)

Luna ans Artemis



(This chart is printed using KG-Chart LE for Cross Stitch.)

Luna ans Artemis



Stitch Count: 100w x 100h
 Finished Size: 18.14 cm x 18.14 cm (28 ct./inch)
 Cloth: Linen
 Cloth's Color: White
 # of colors: 4 Colors

Color Table (DMC)

Cross Stitch

+	310	(3952 ct)
□	743	(20 ct)
≡	3856	(130 ct)

Backstitch

↖	BLANC	(10 ct)
↖	310	(10 ct)