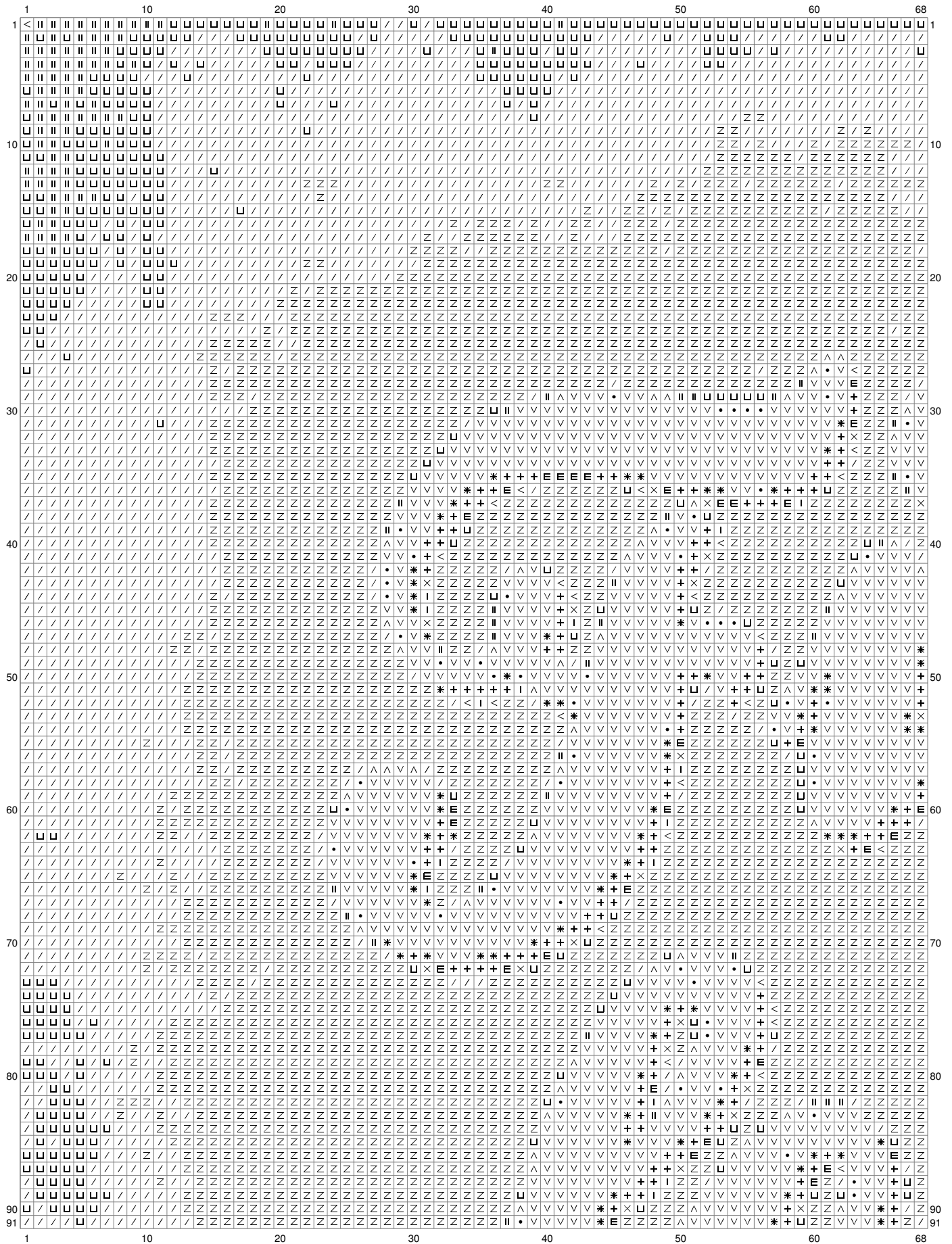
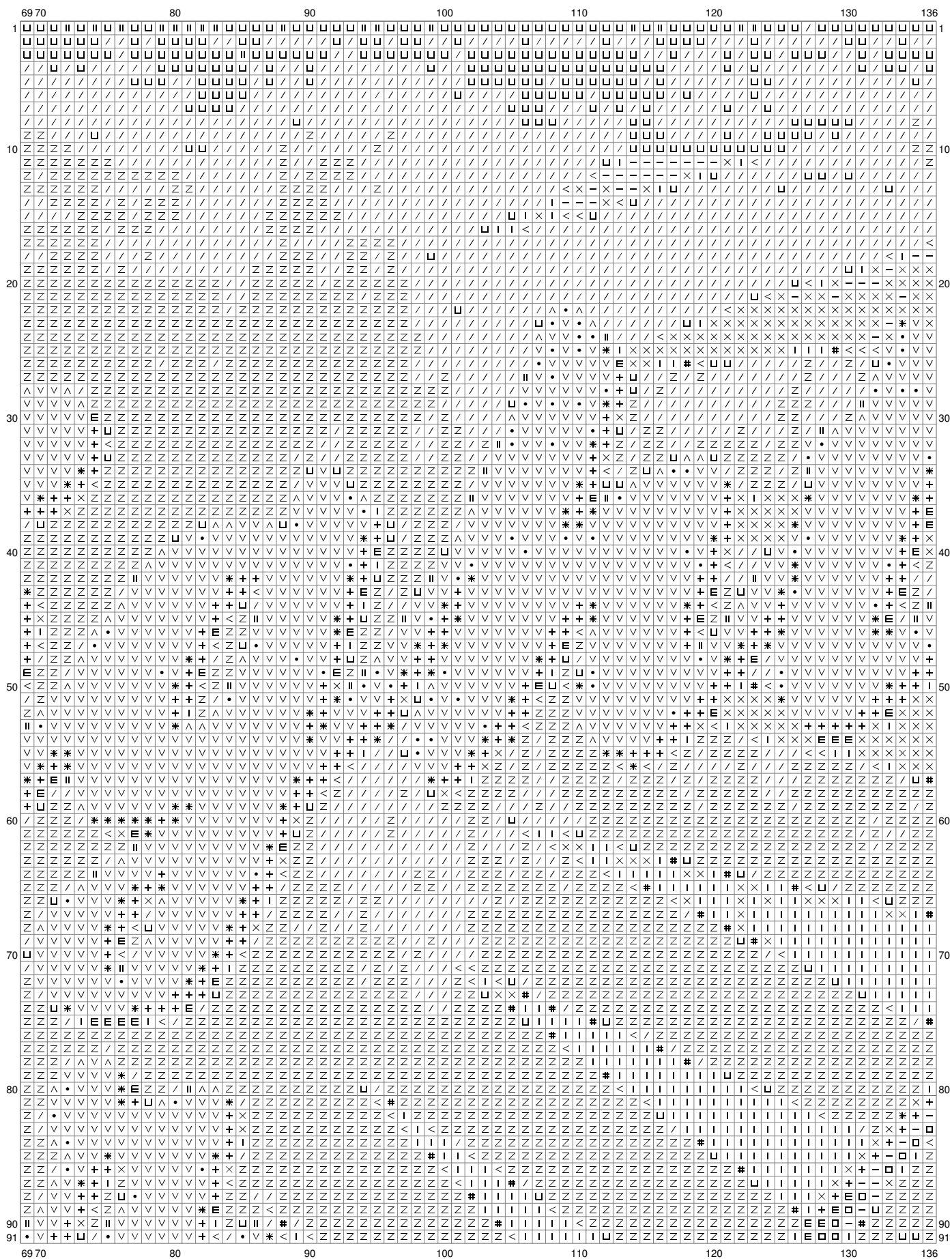


Untitled



(This chart is printed using KG-Chart LE for Cross Stitch.)

Untitled

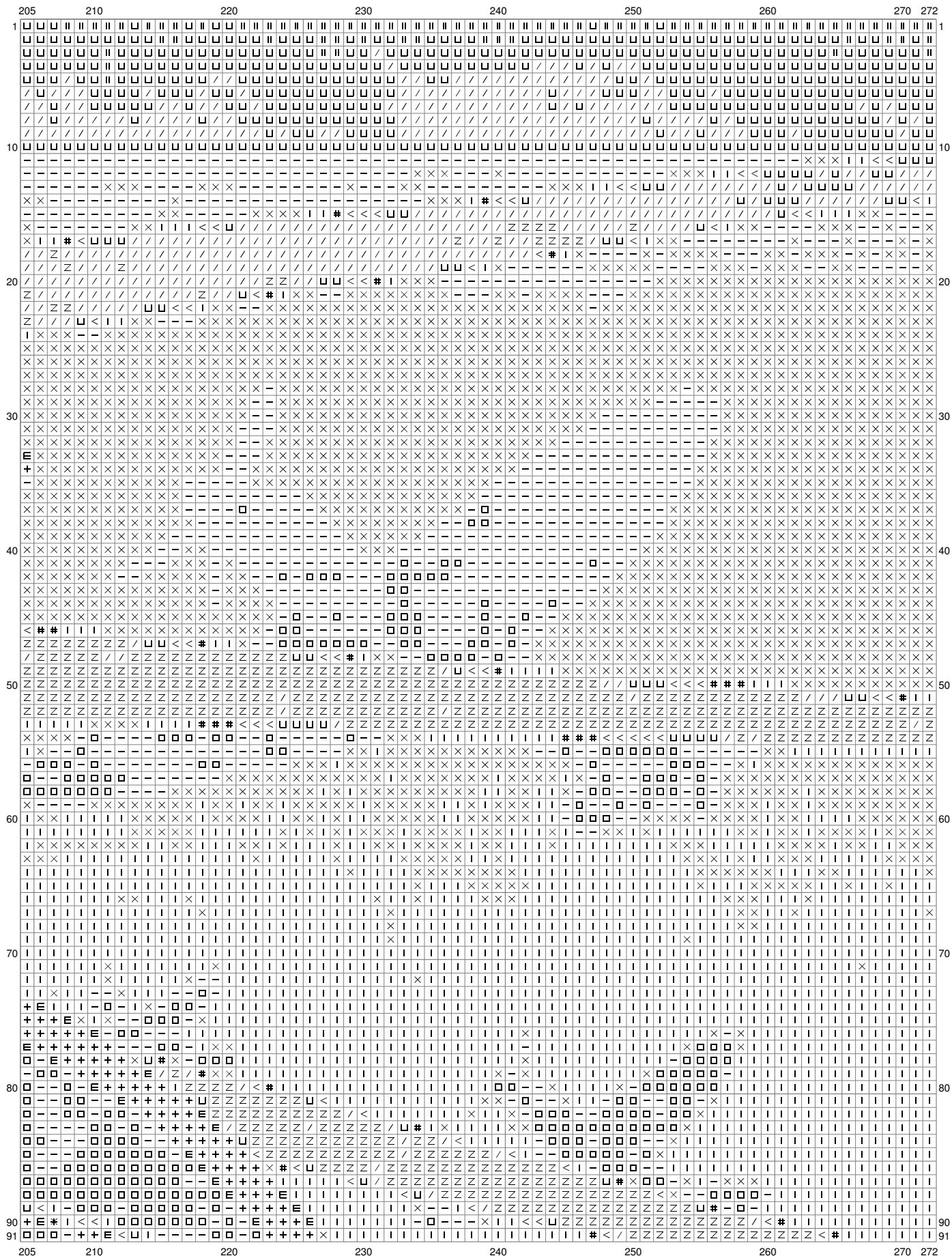


(This chart is printed using KG-Chart LE for Cross Stitch.)

▼

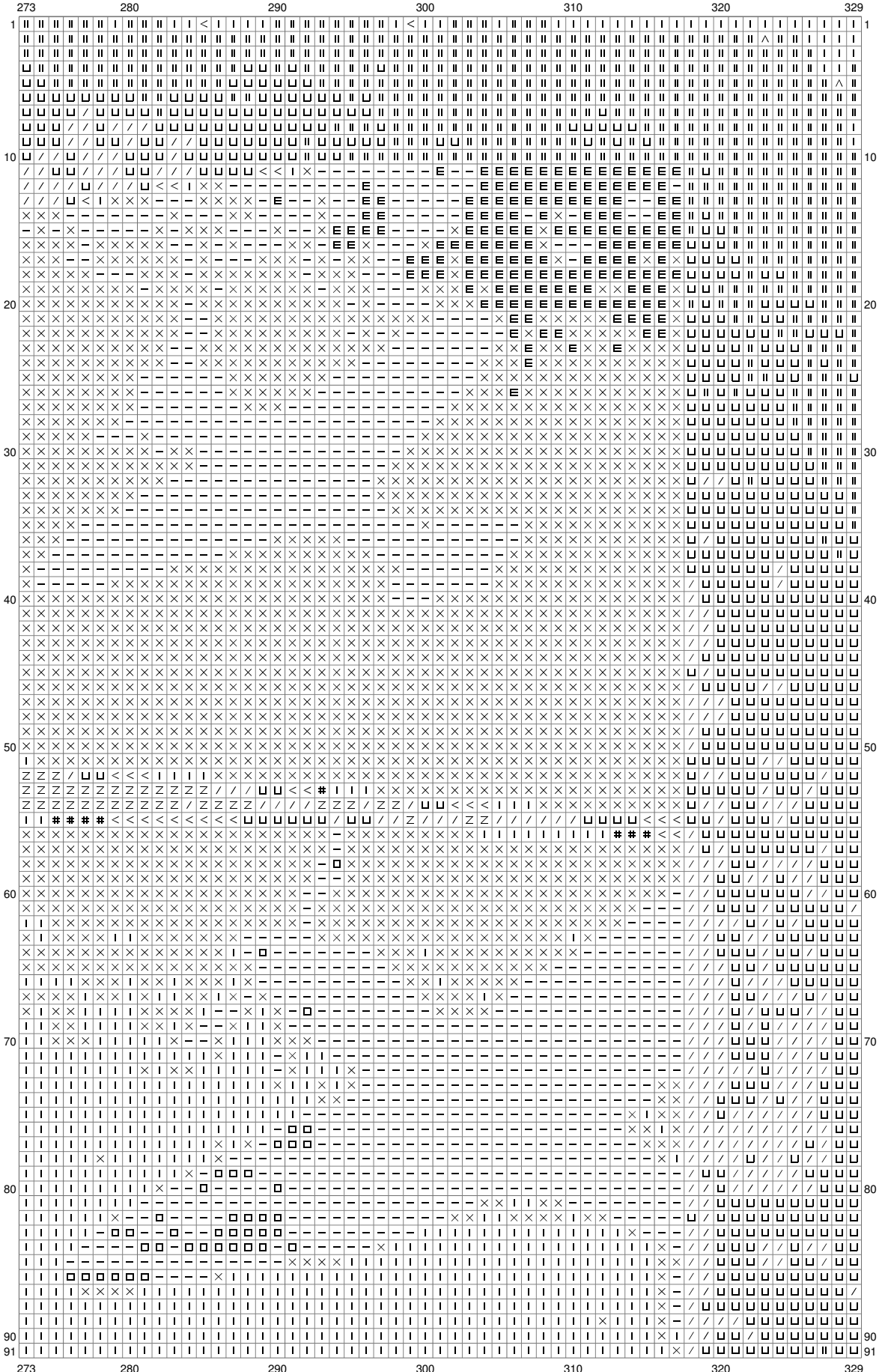


Untitled



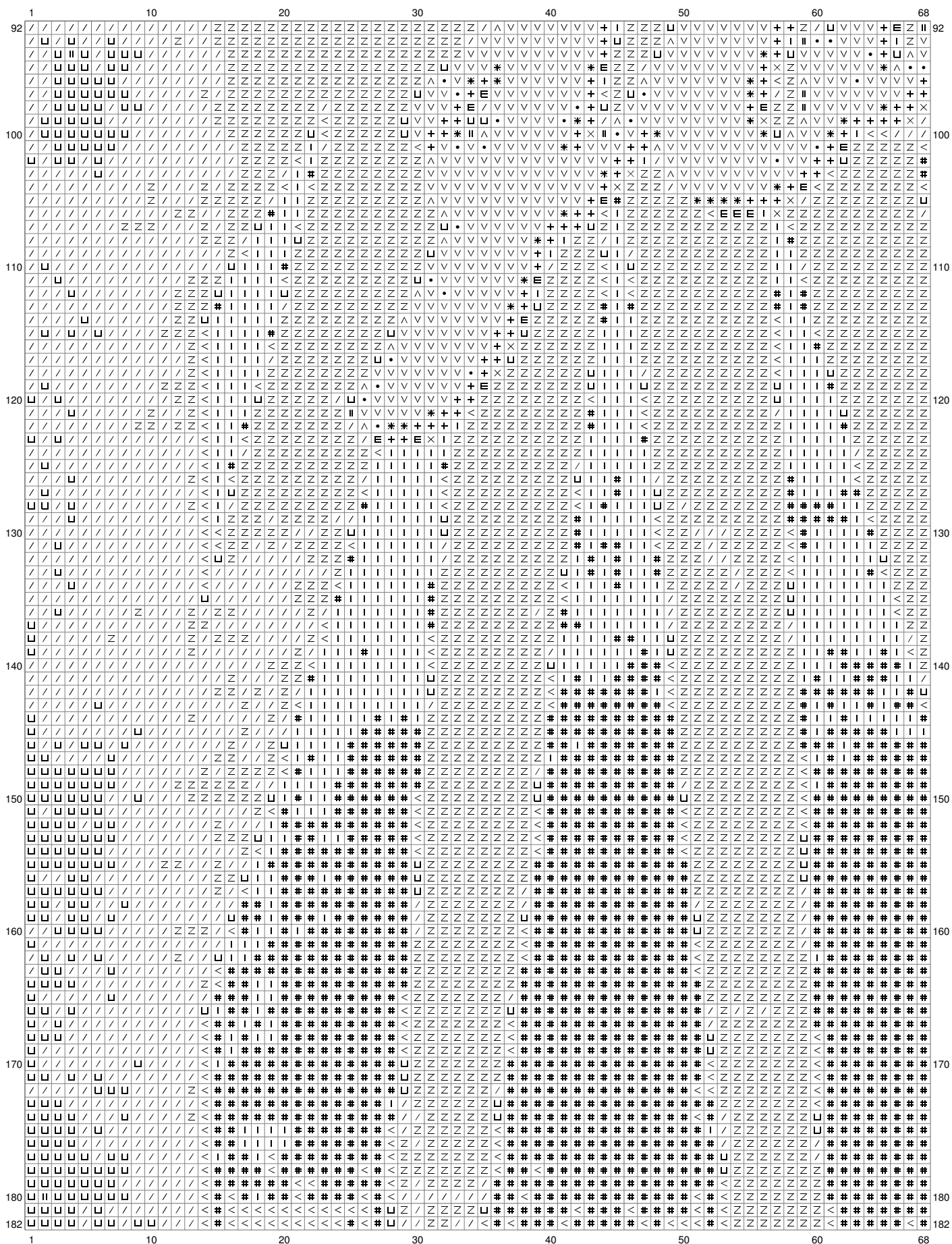
(This chart is printed using KG-Chart LE for Cross Stitch.)

Untitled

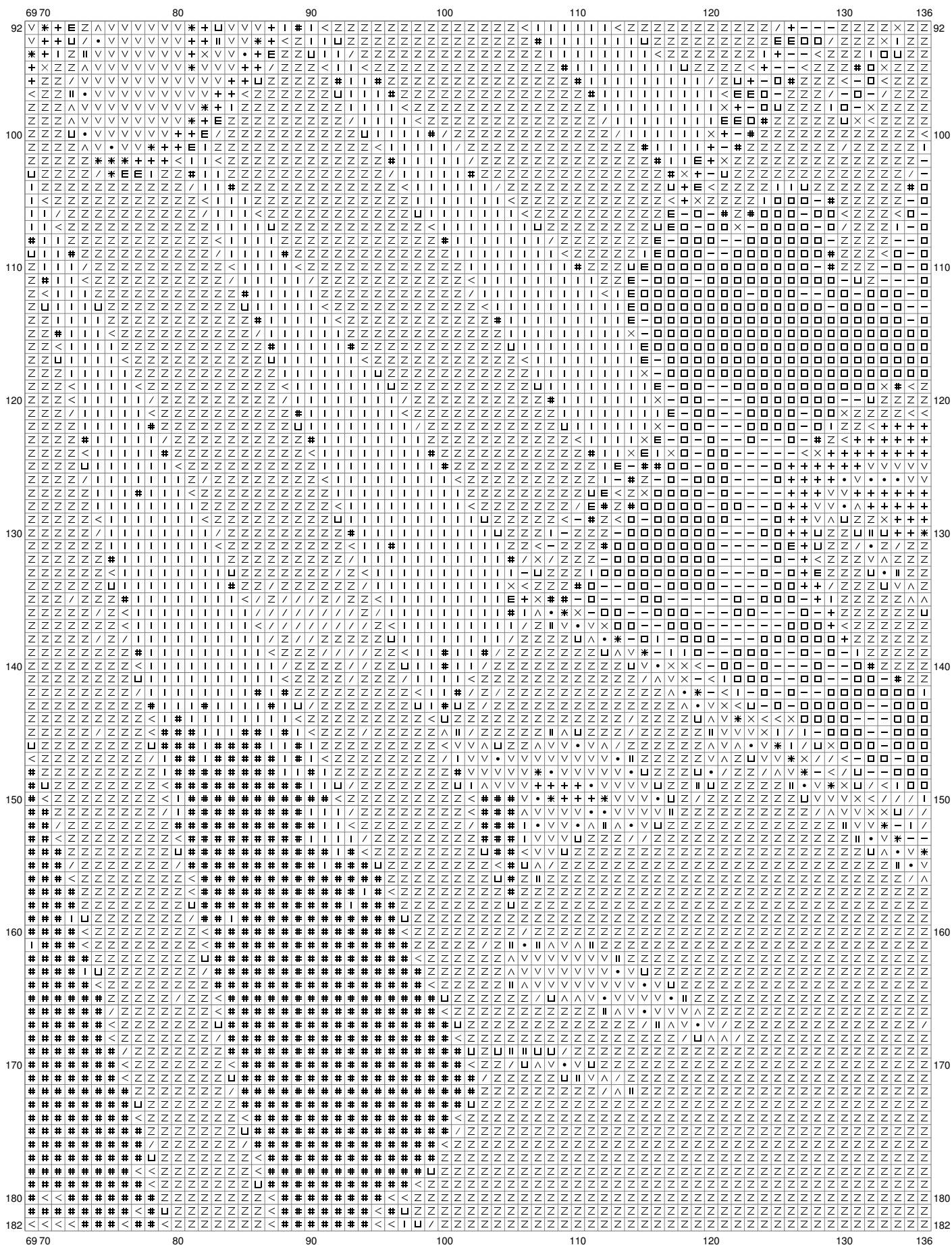


(This chart is printed using KG-Chart LE for Cross Stitch.)

Untitled

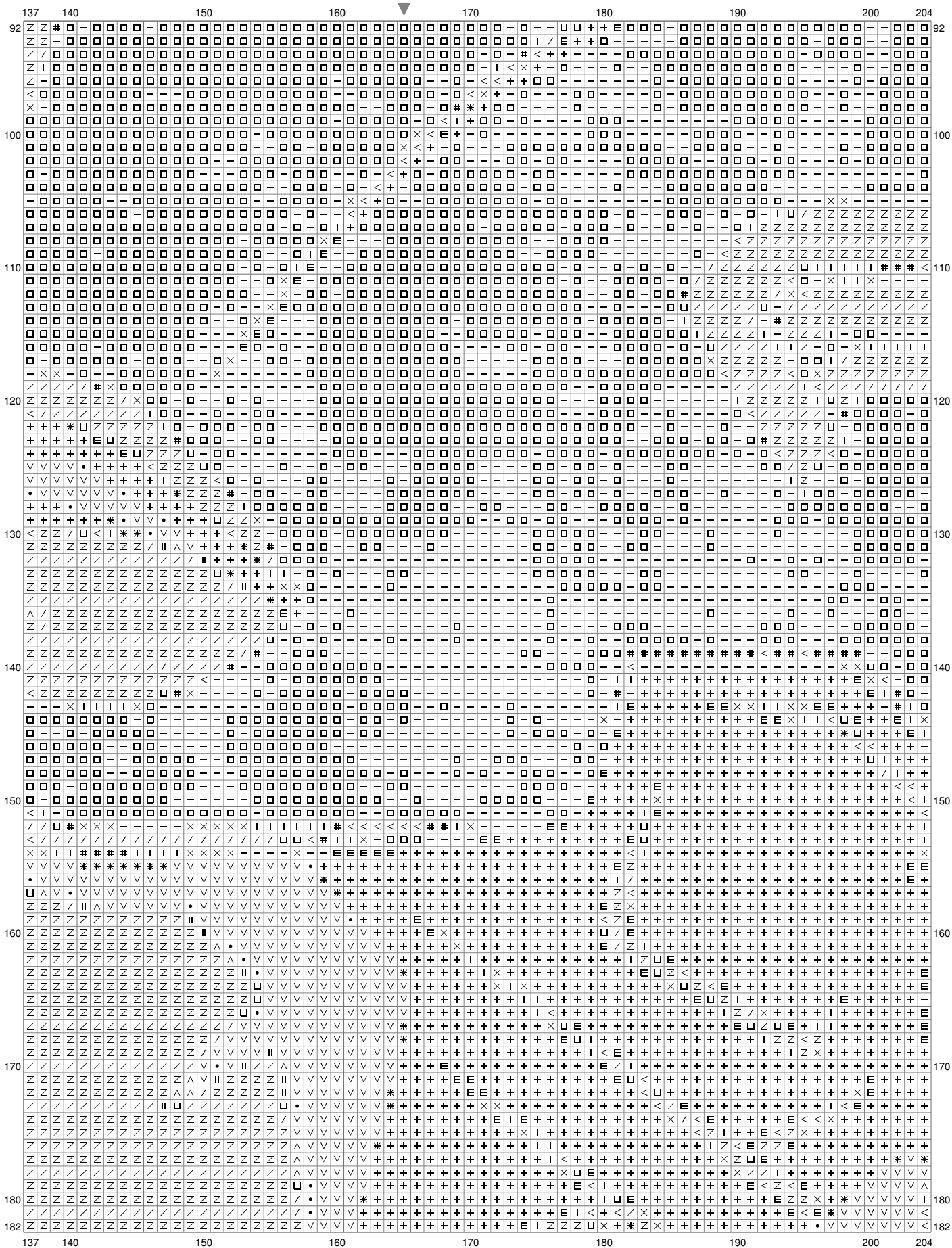


Untitled



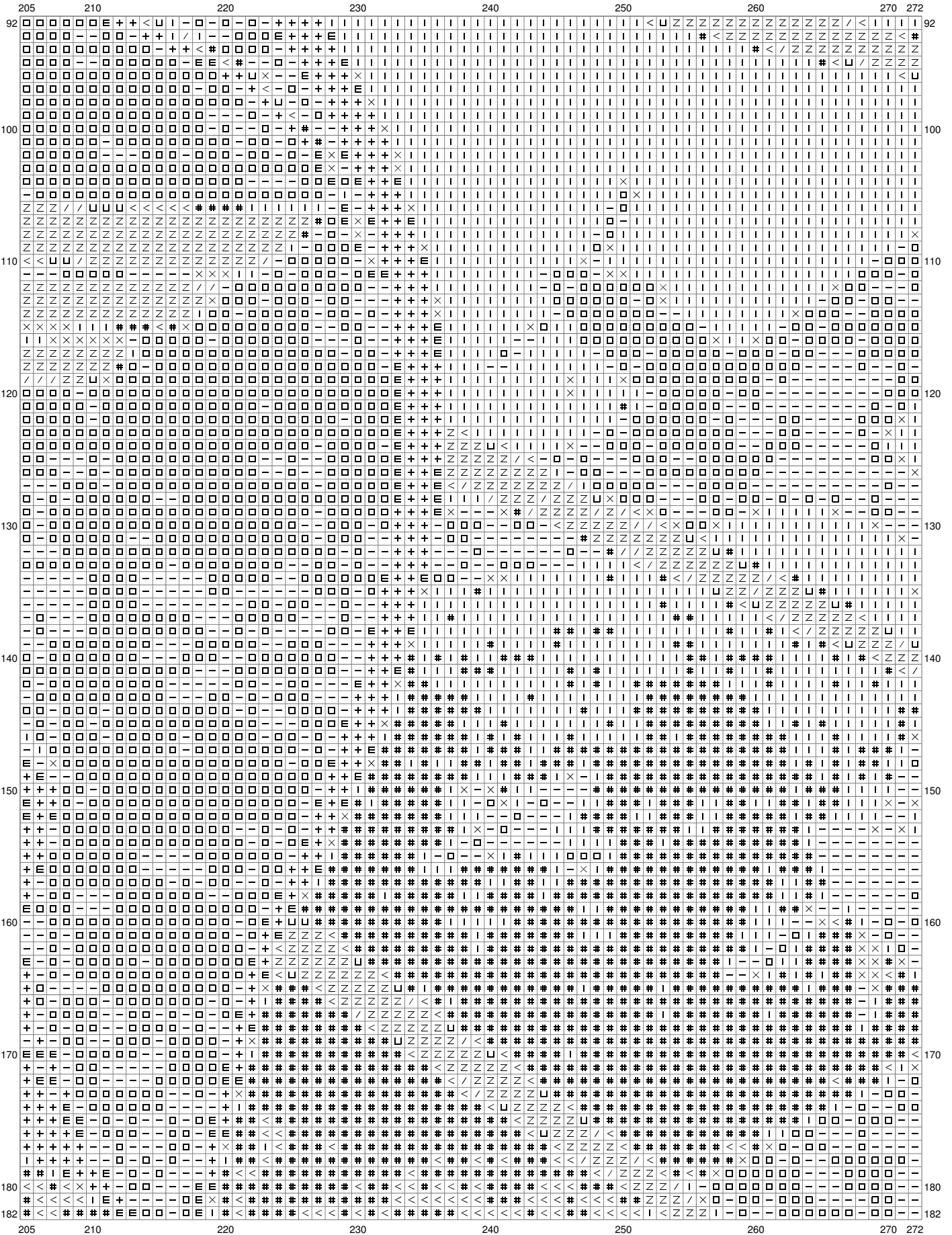
(This chart is printed using KG-Chart LE for Cross Stitch.)

Untitled

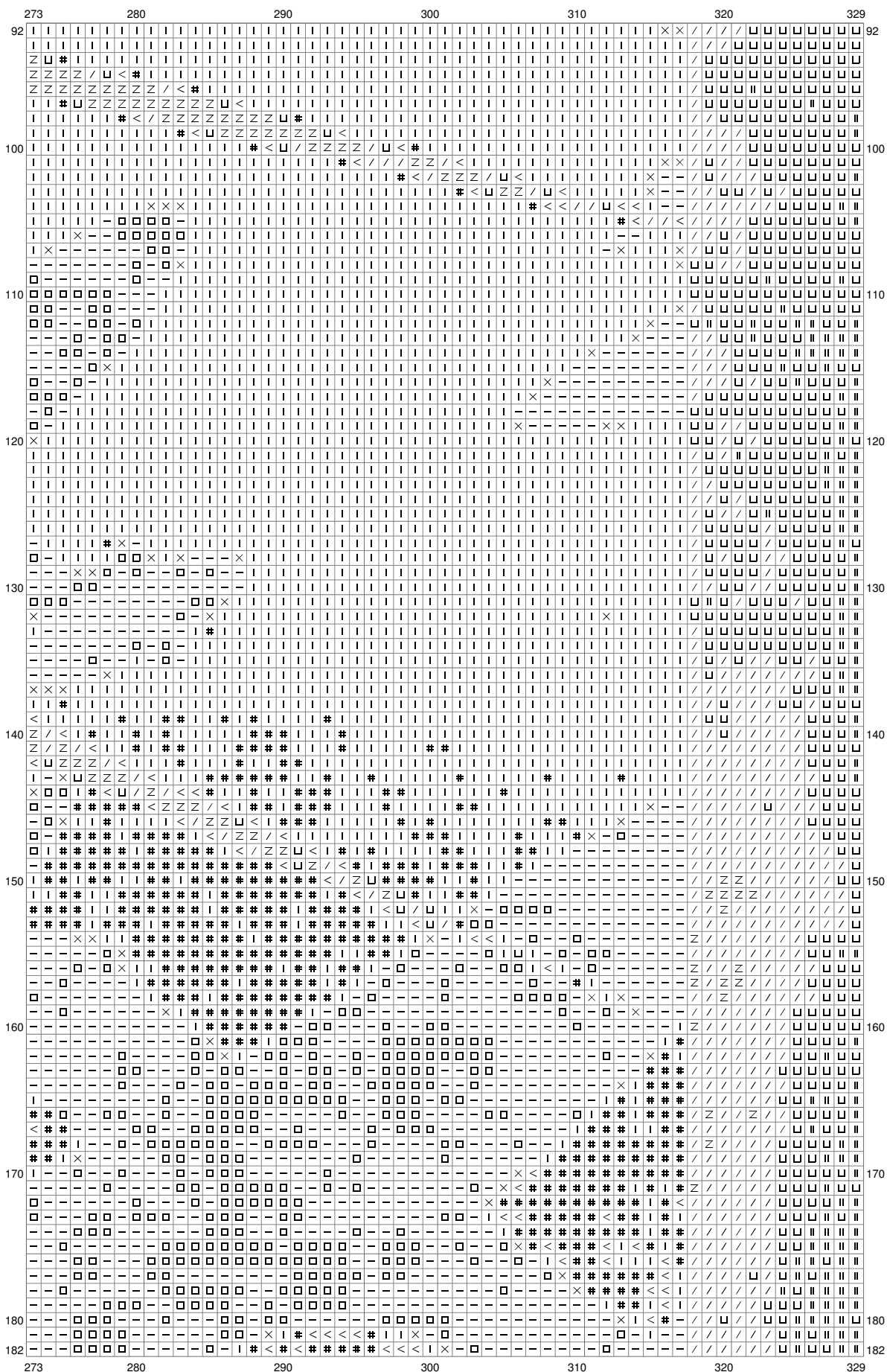


(This chart is printed using KG-Chart LE for Cross Stitch.)

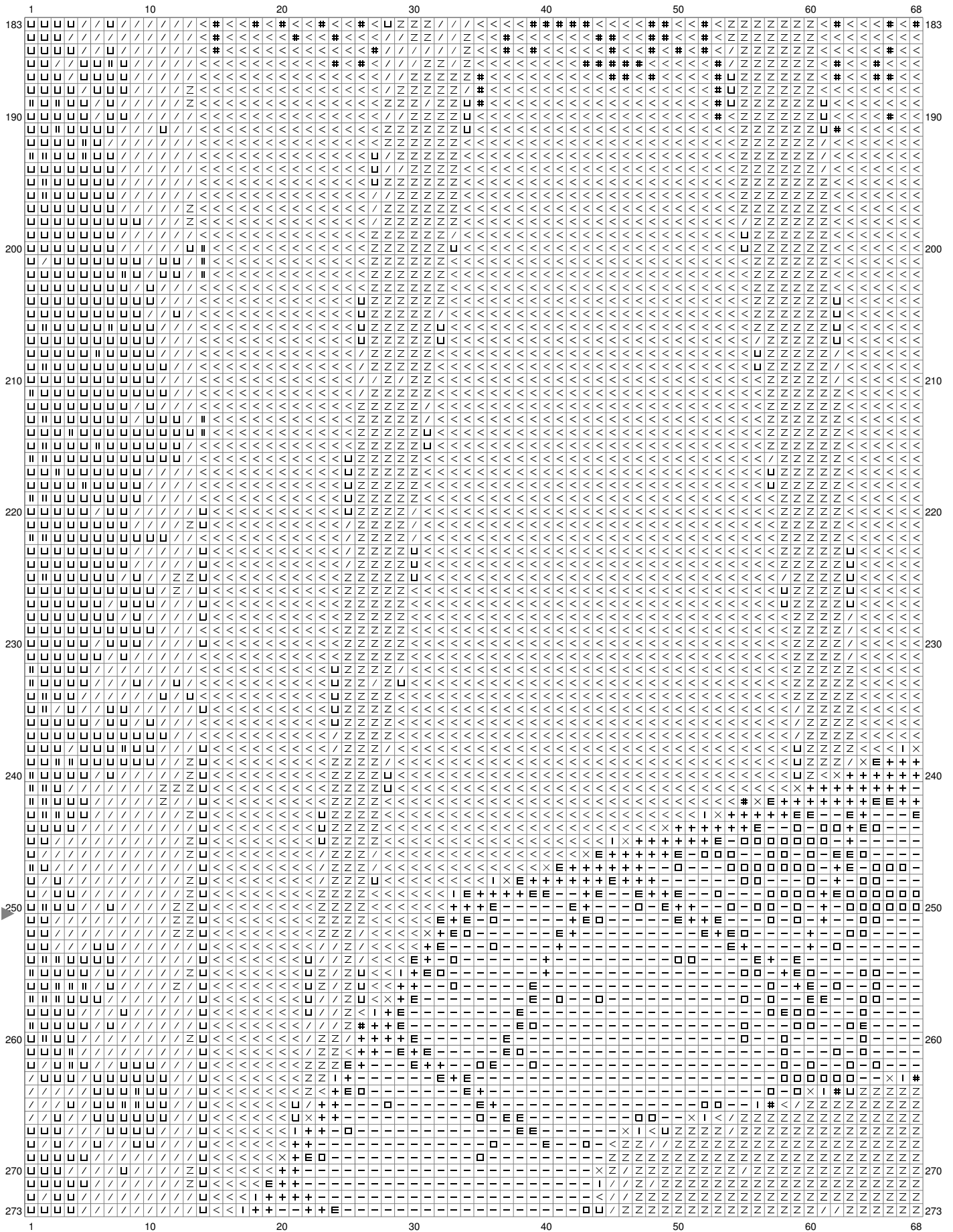
Untitled



Untitled

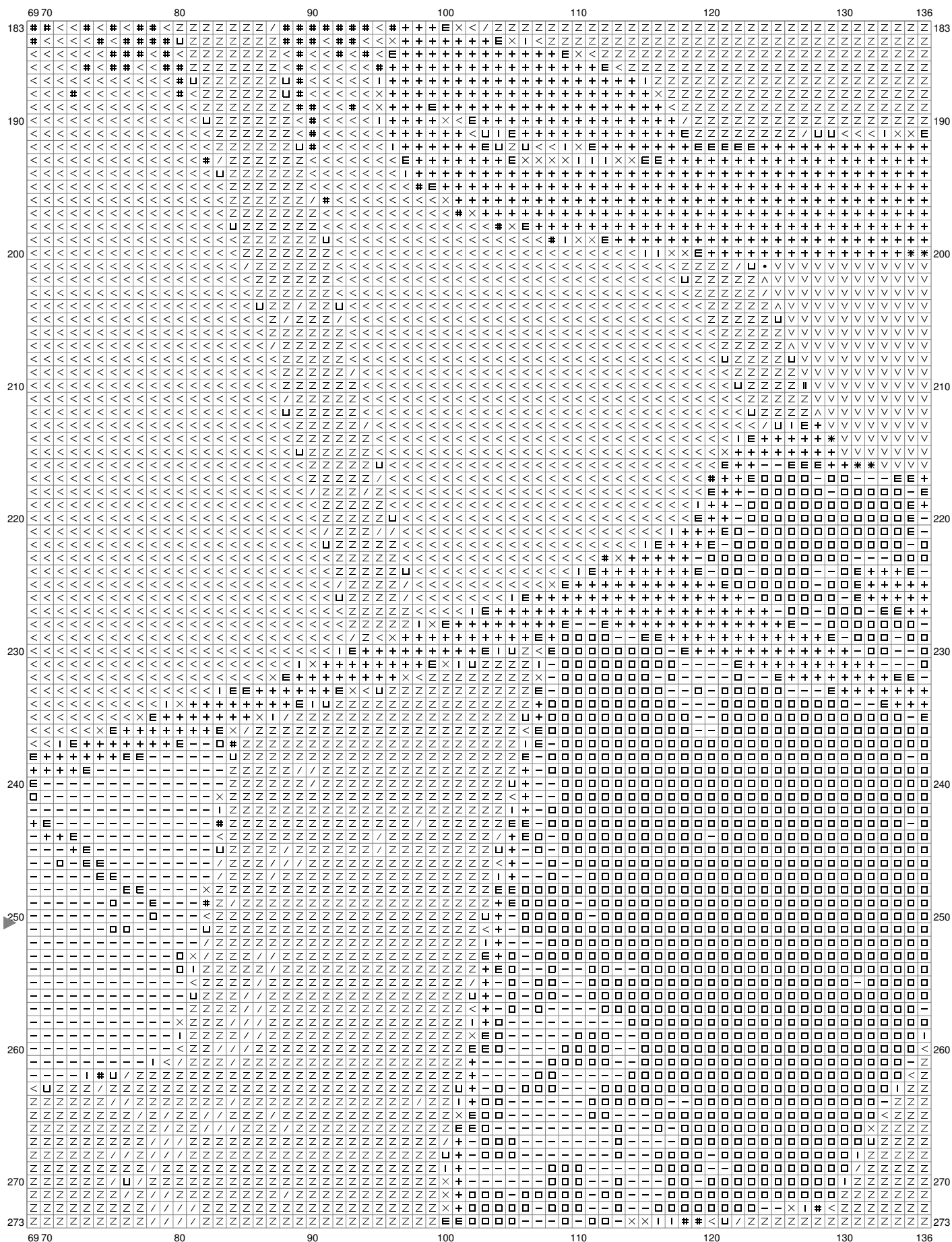


Untitled



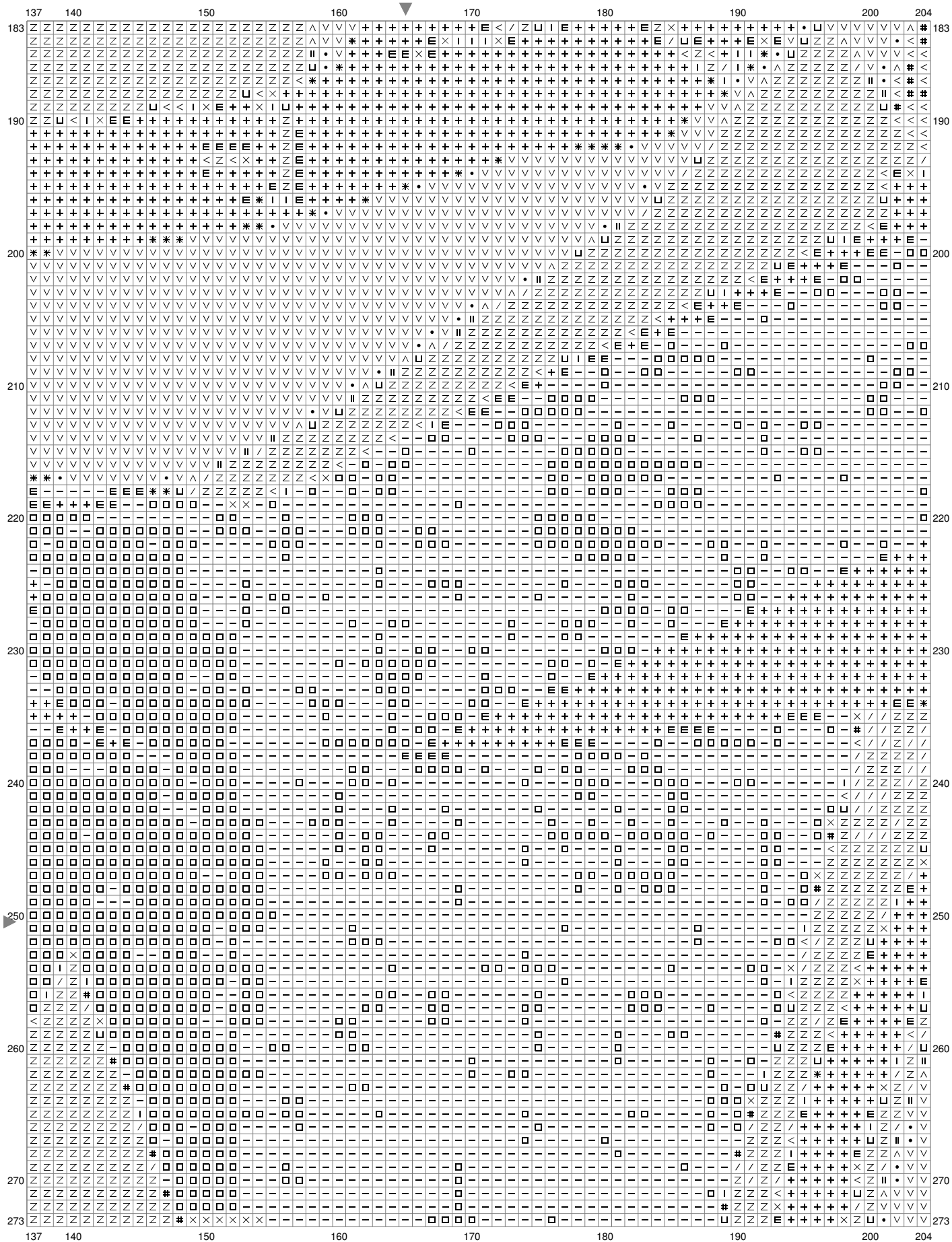
(This chart is printed using KG-Chart LE for Cross Stitch.)

Untitled

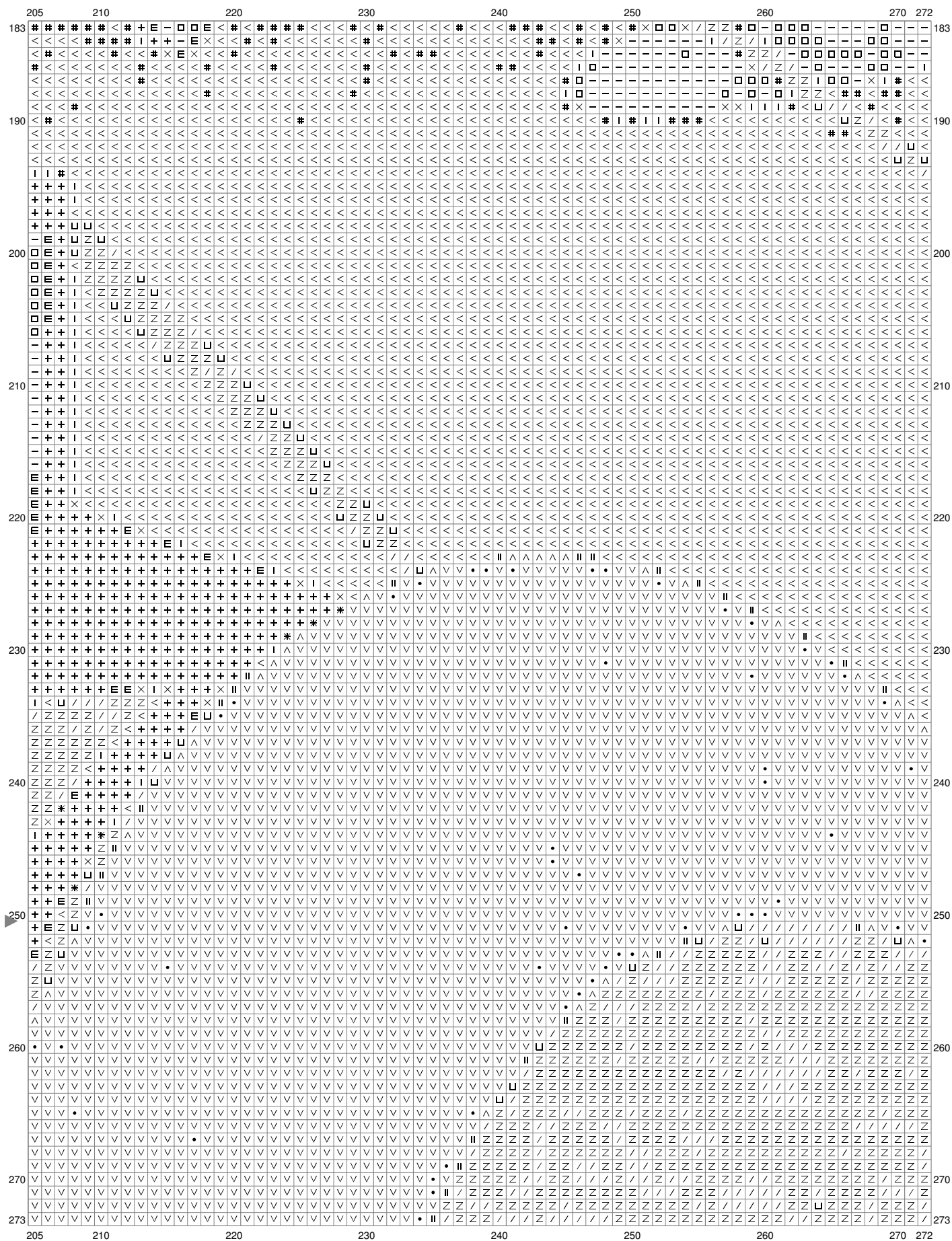


(This chart is printed using KG-Chart LE for Cross Stitch.)

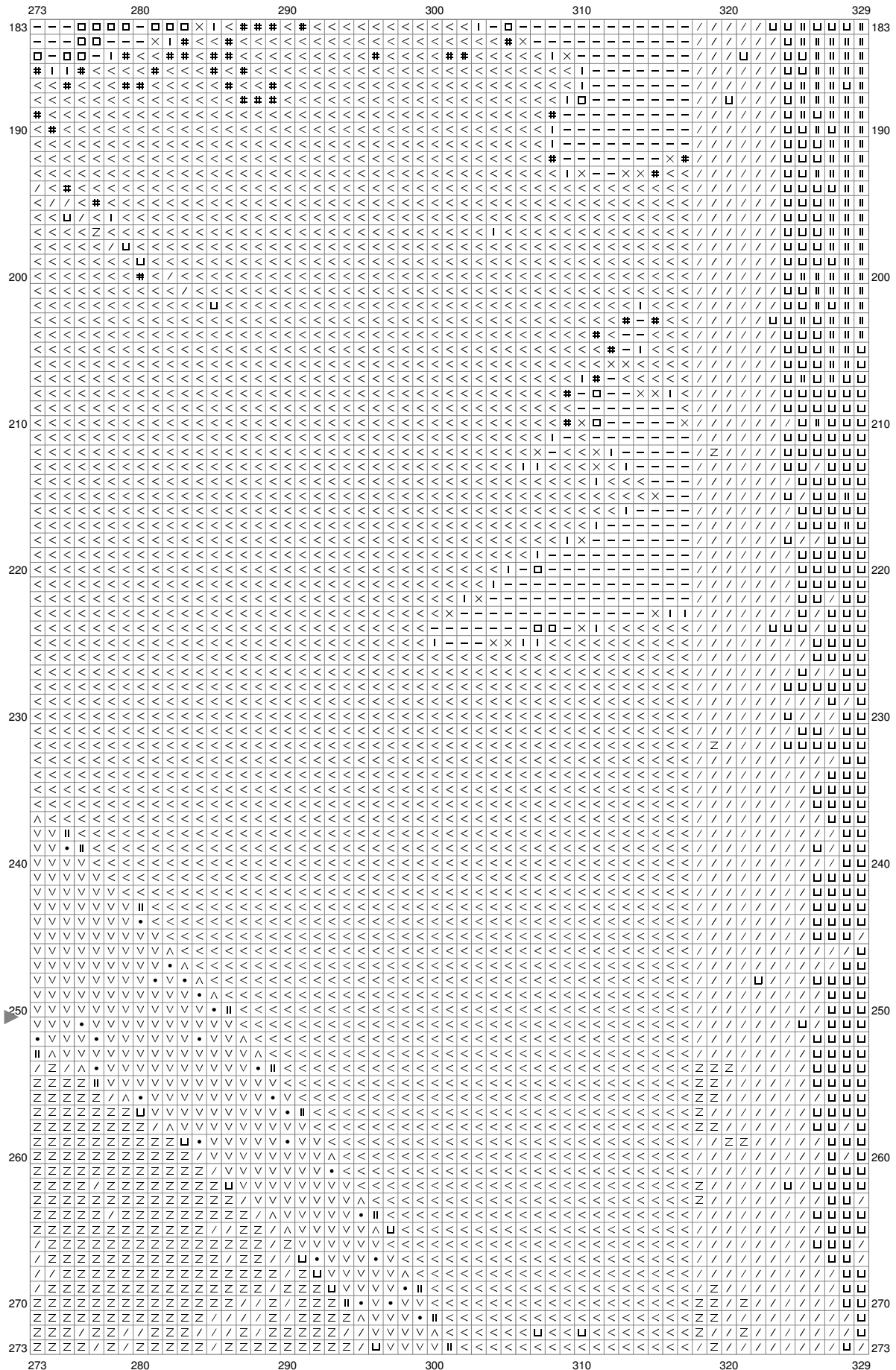
Untitled



Untitled

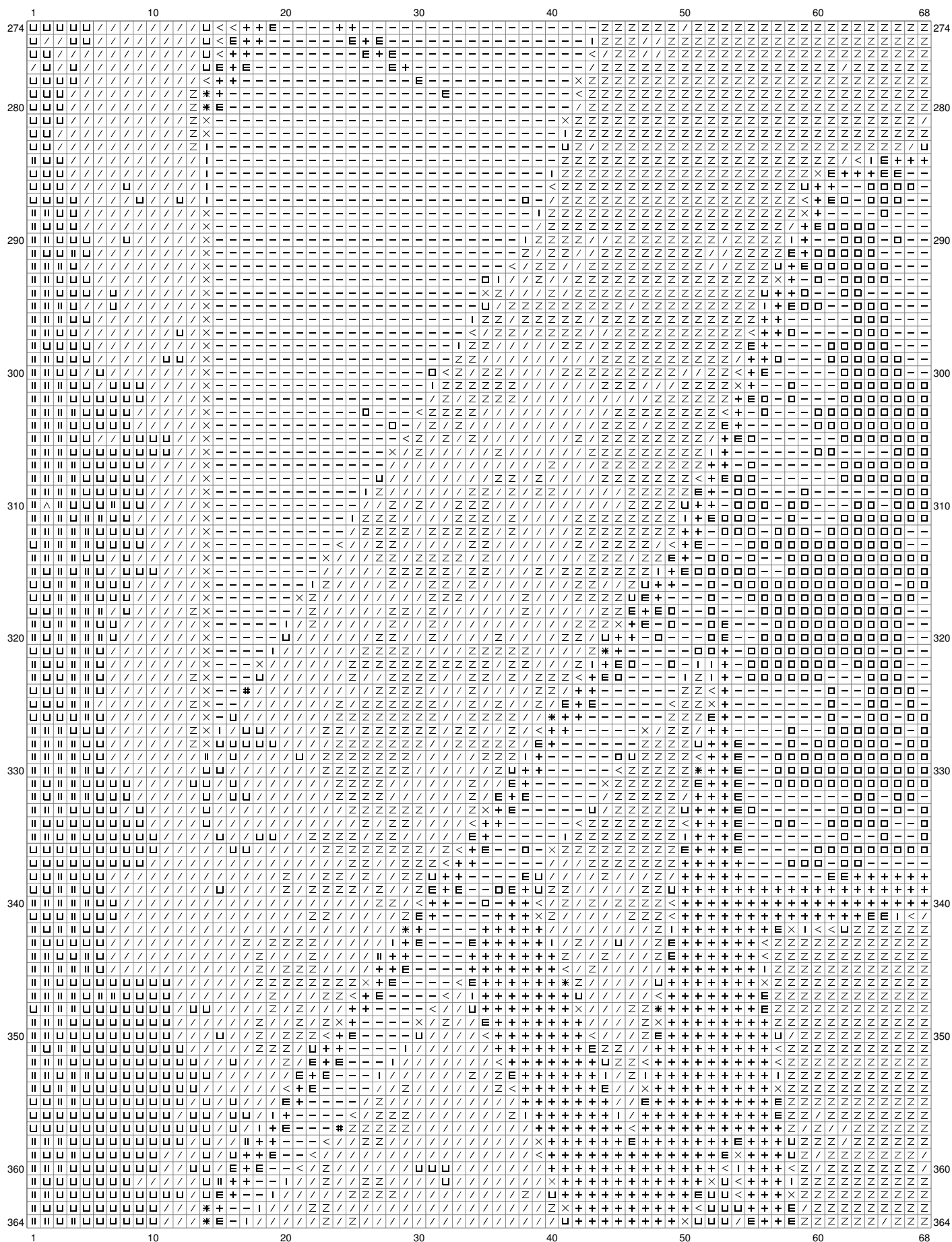


Untitled



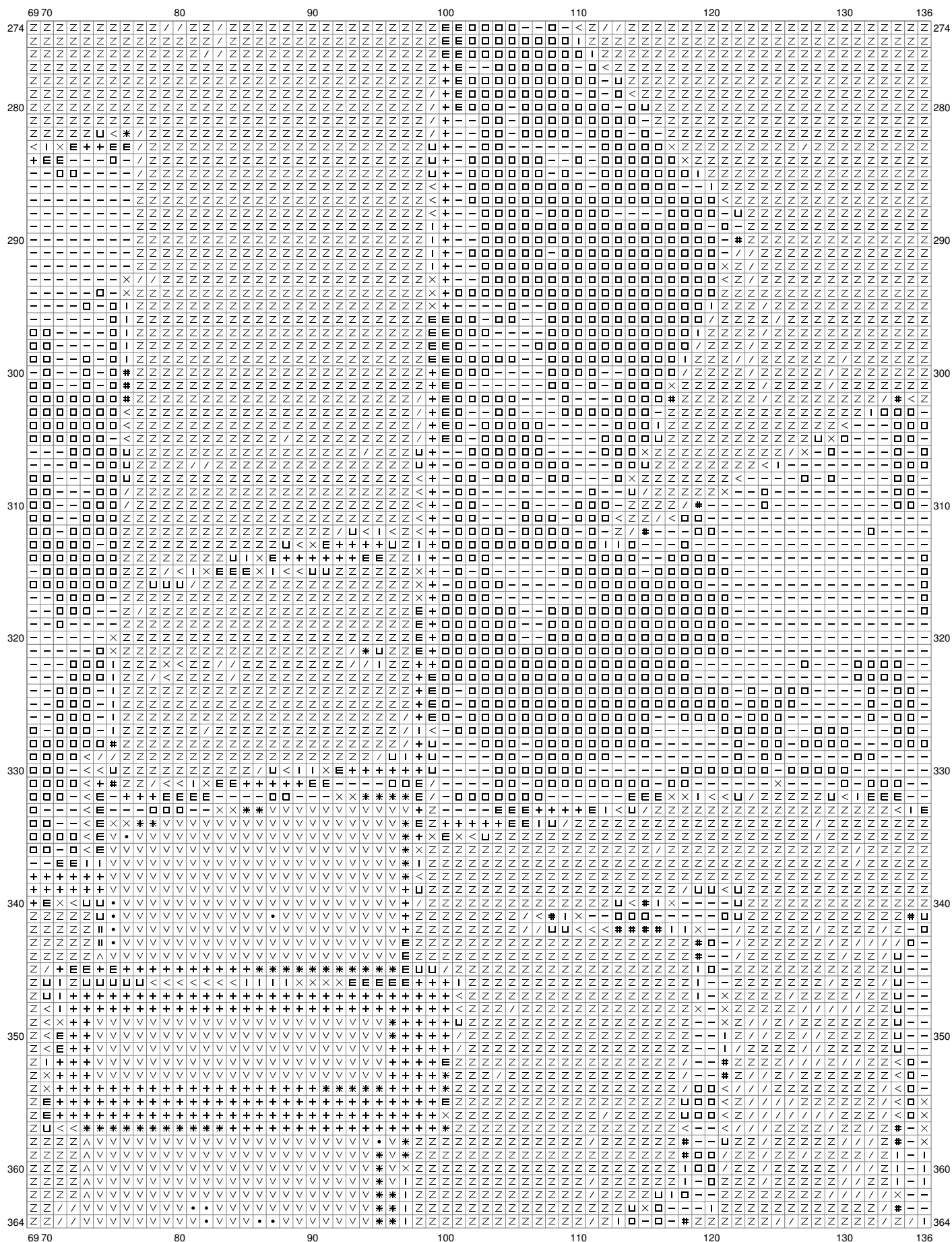
(This chart is printed using KG-Chart LE for Cross Stitch.)

Untitled



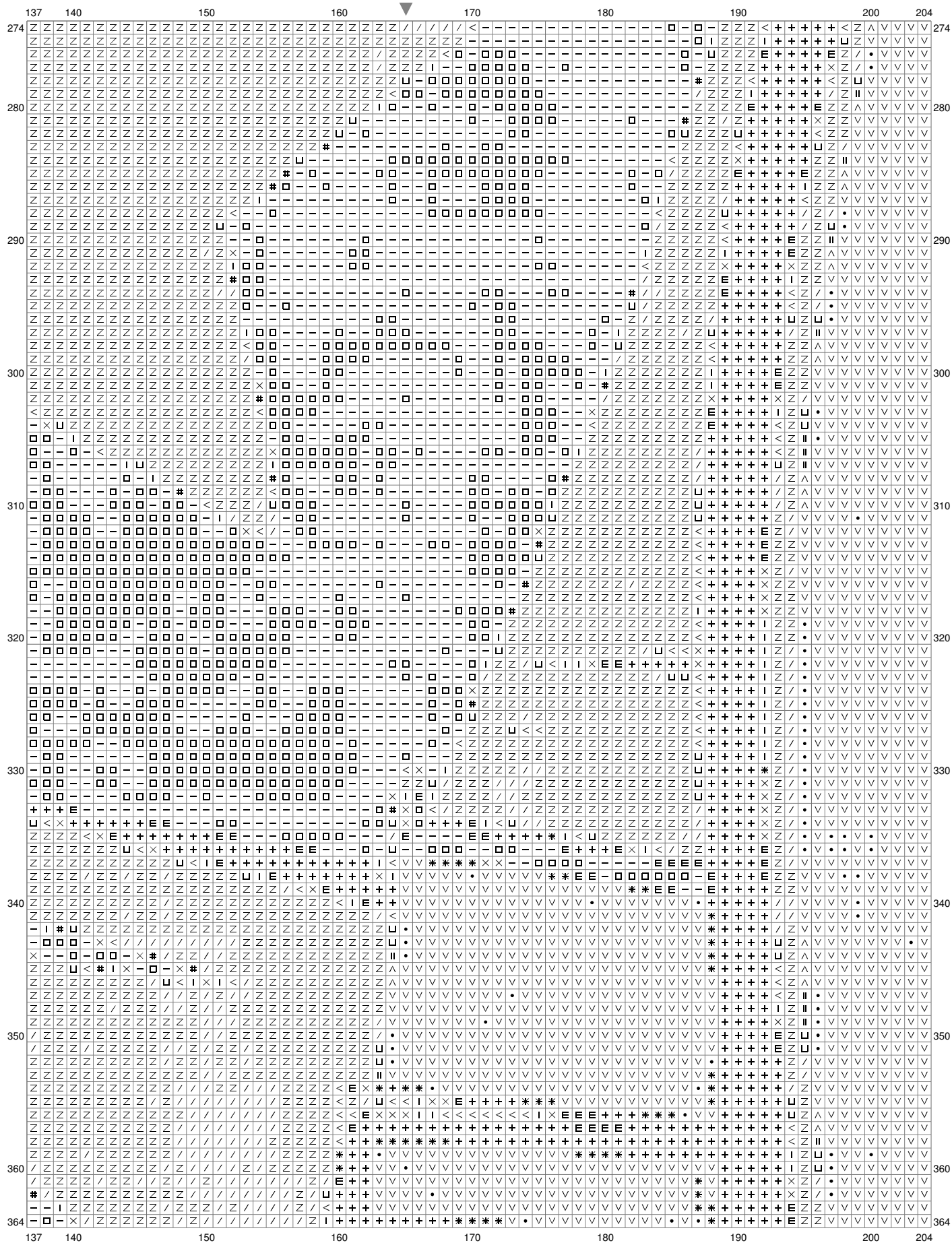
(This chart is printed using KG-Chart LE for Cross Stitch.)

Untitled

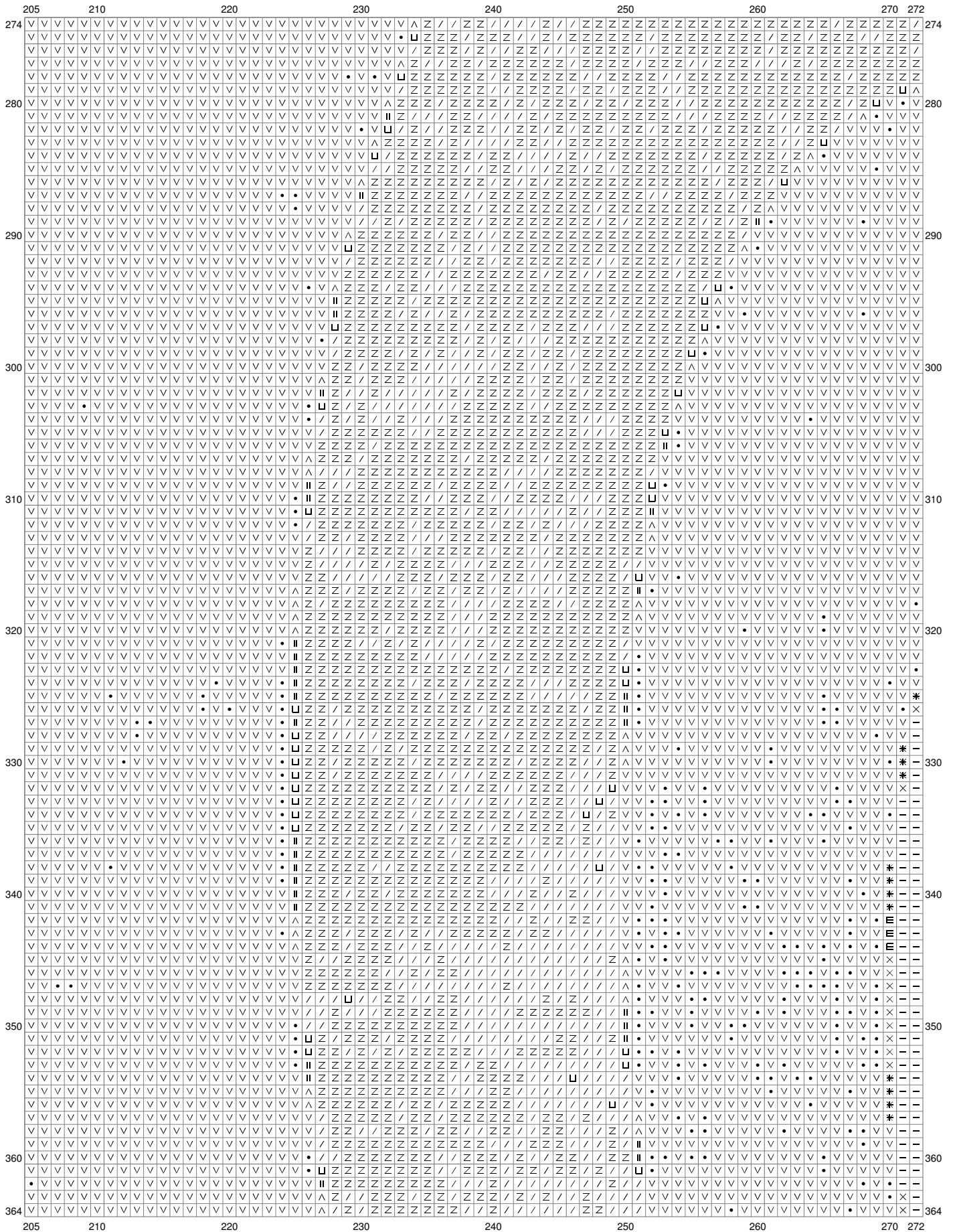


(This chart is printed using KG-Chart LE for Cross Stitch.)

Untitled

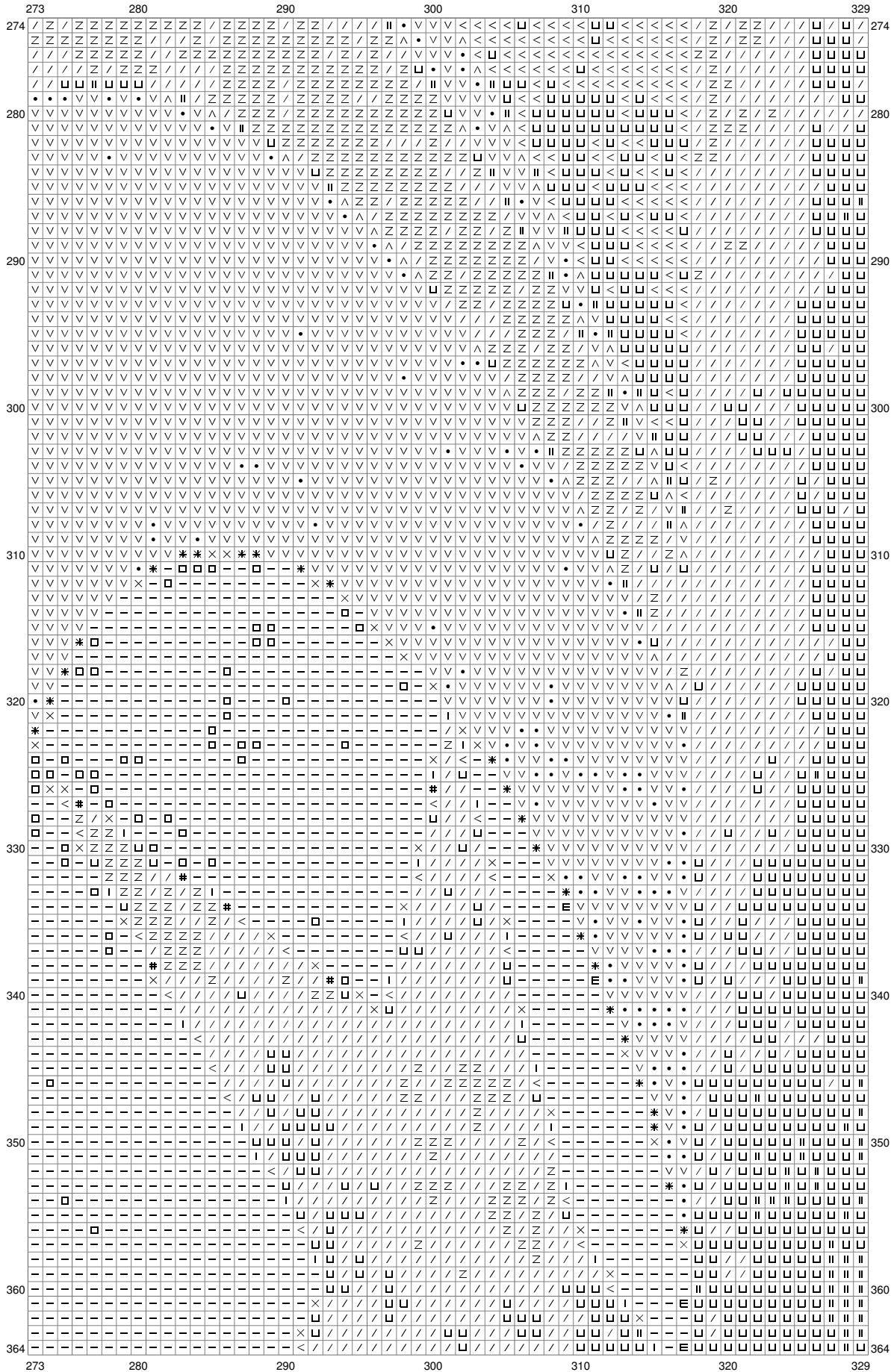


Untitled

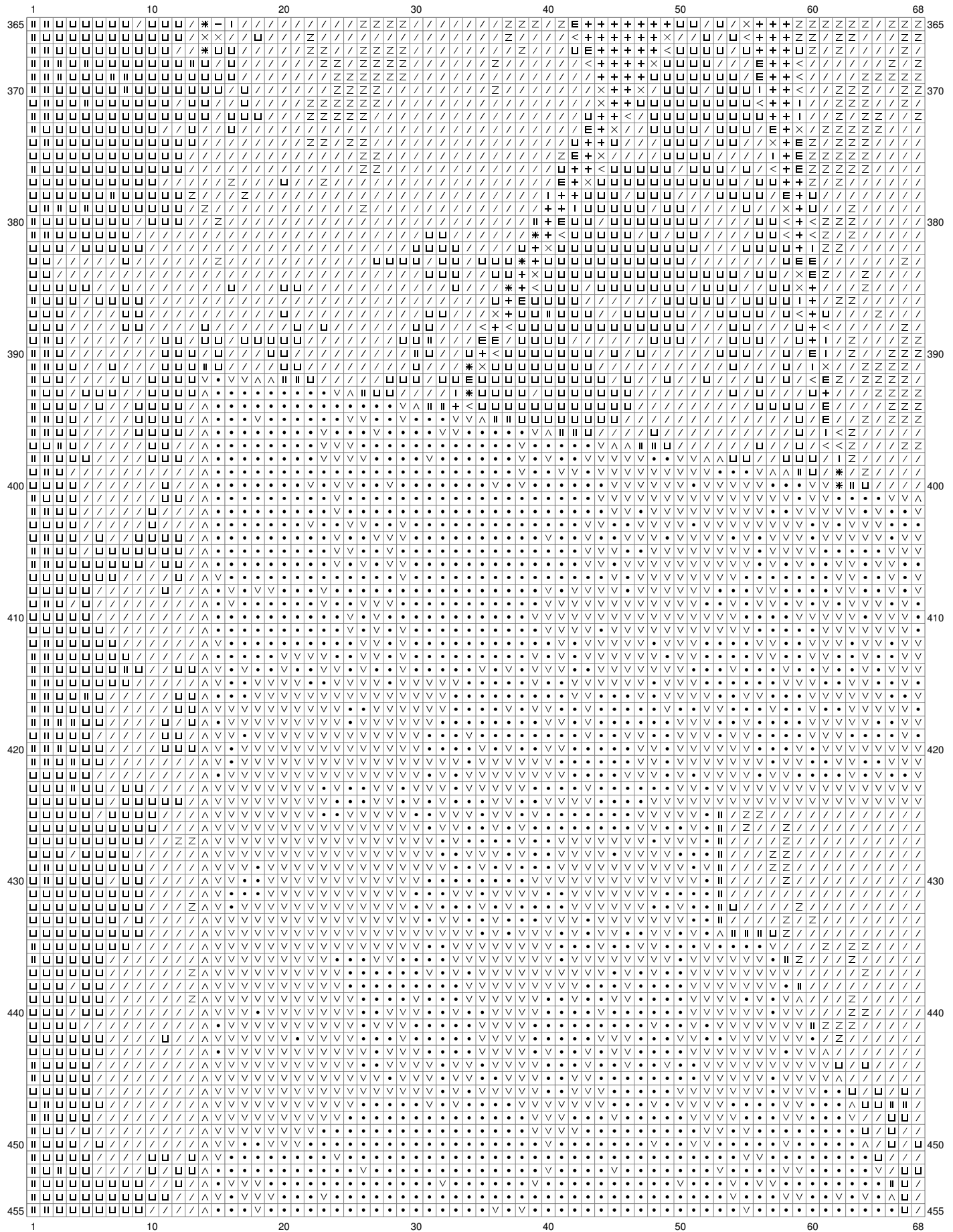


(This chart is printed using KG-Chart LE for Cross Stitch

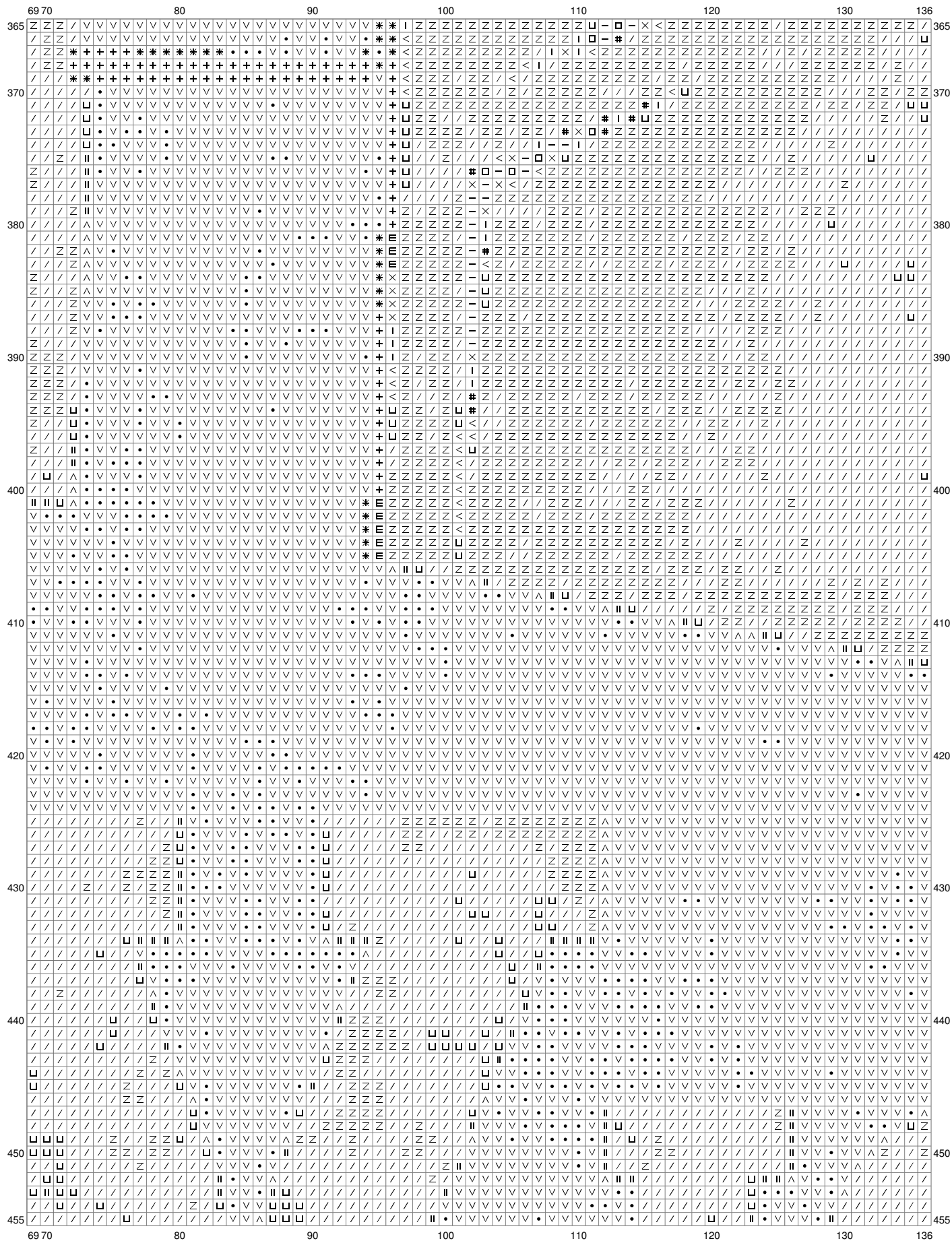
Untitled



Untitled

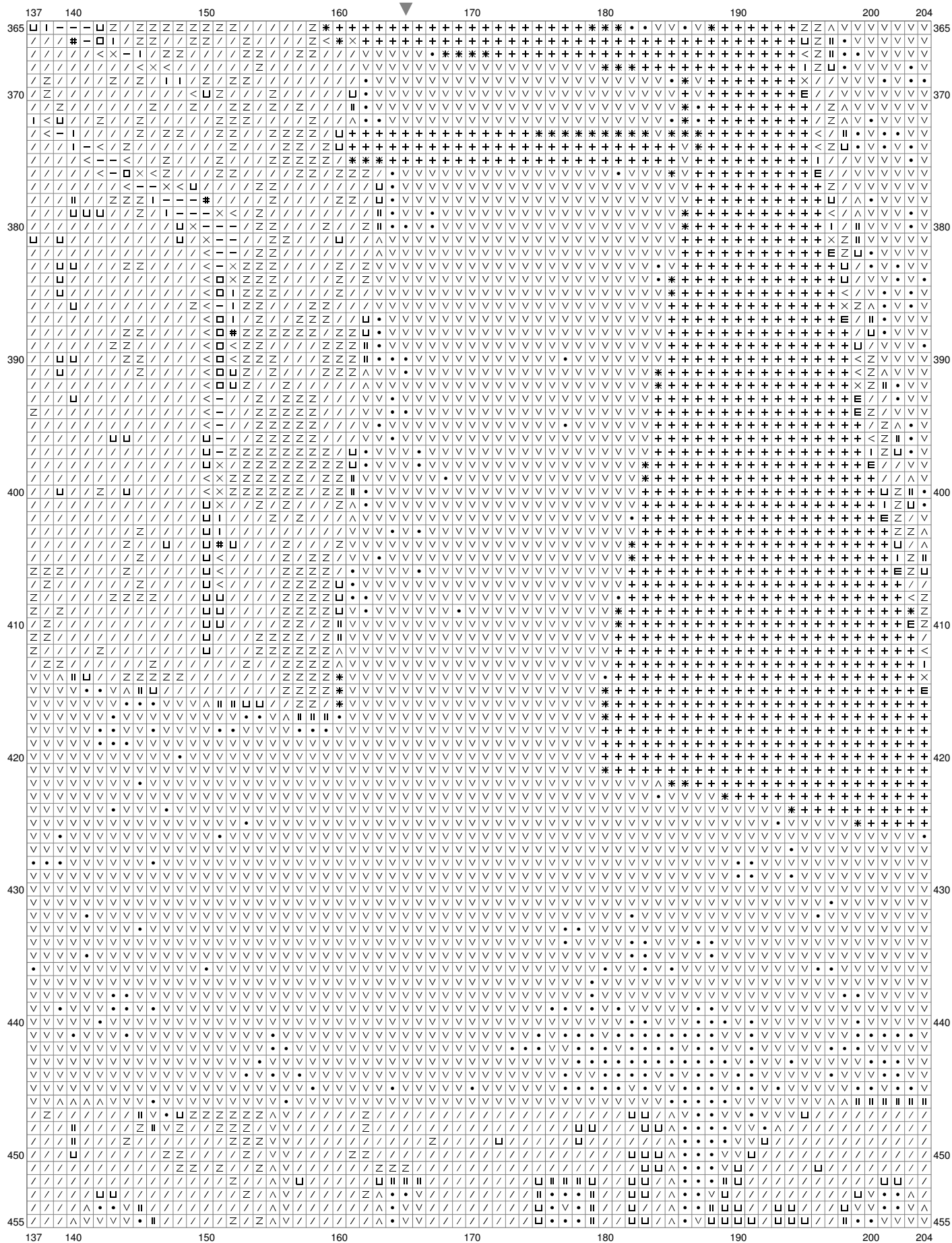


Untitled

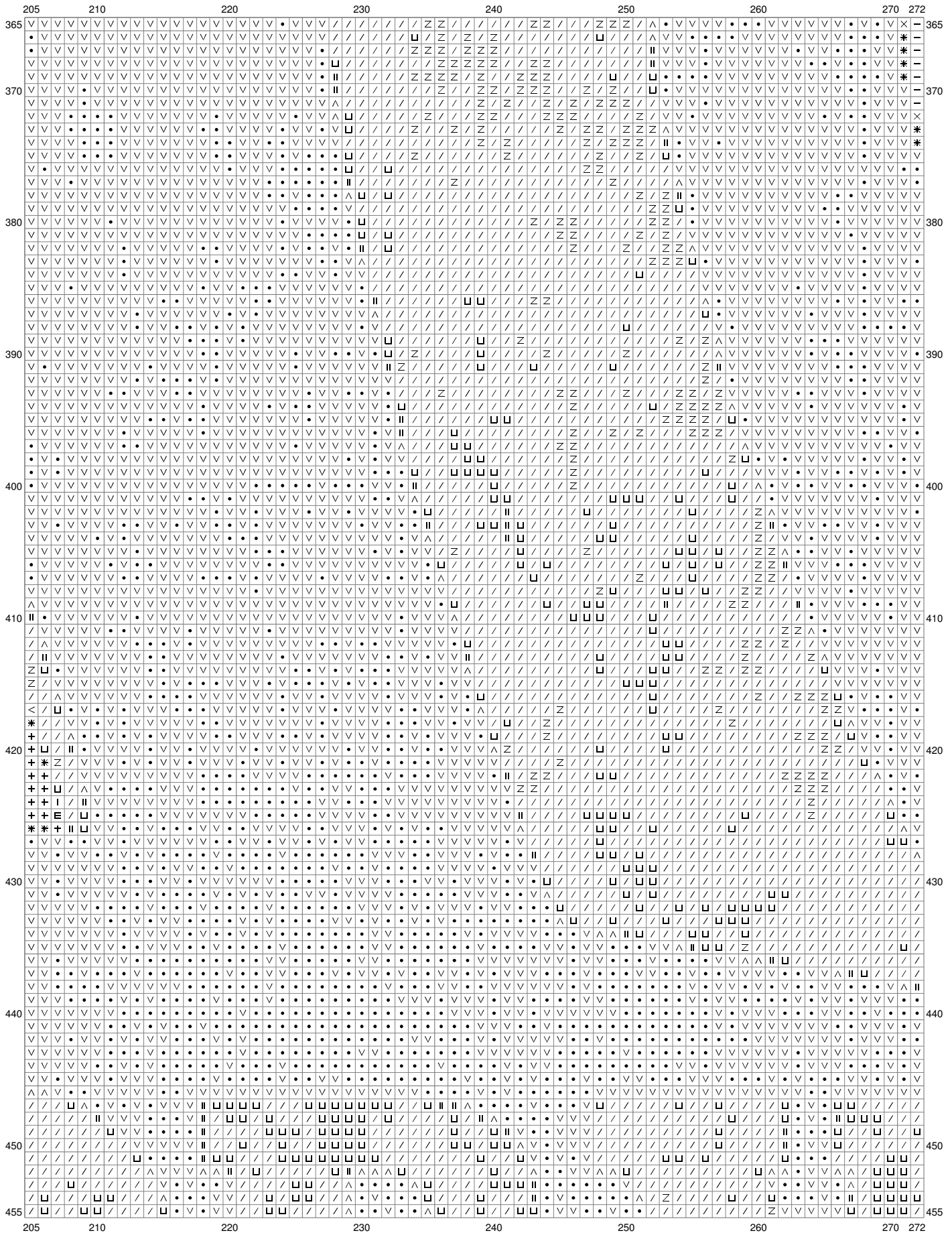


(This chart is printed using KG-Chart LE for Cross Stitch.)

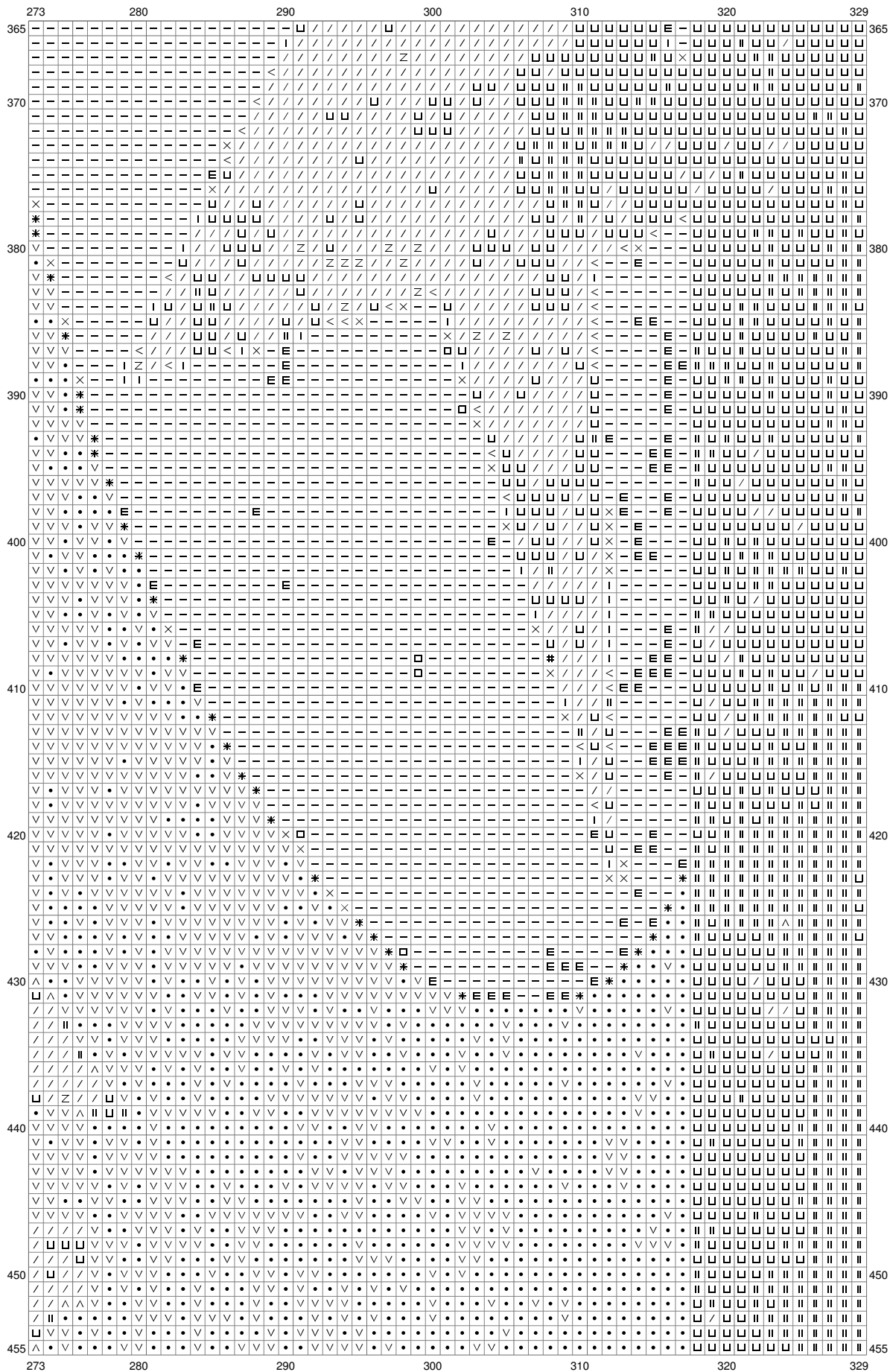
Untitled



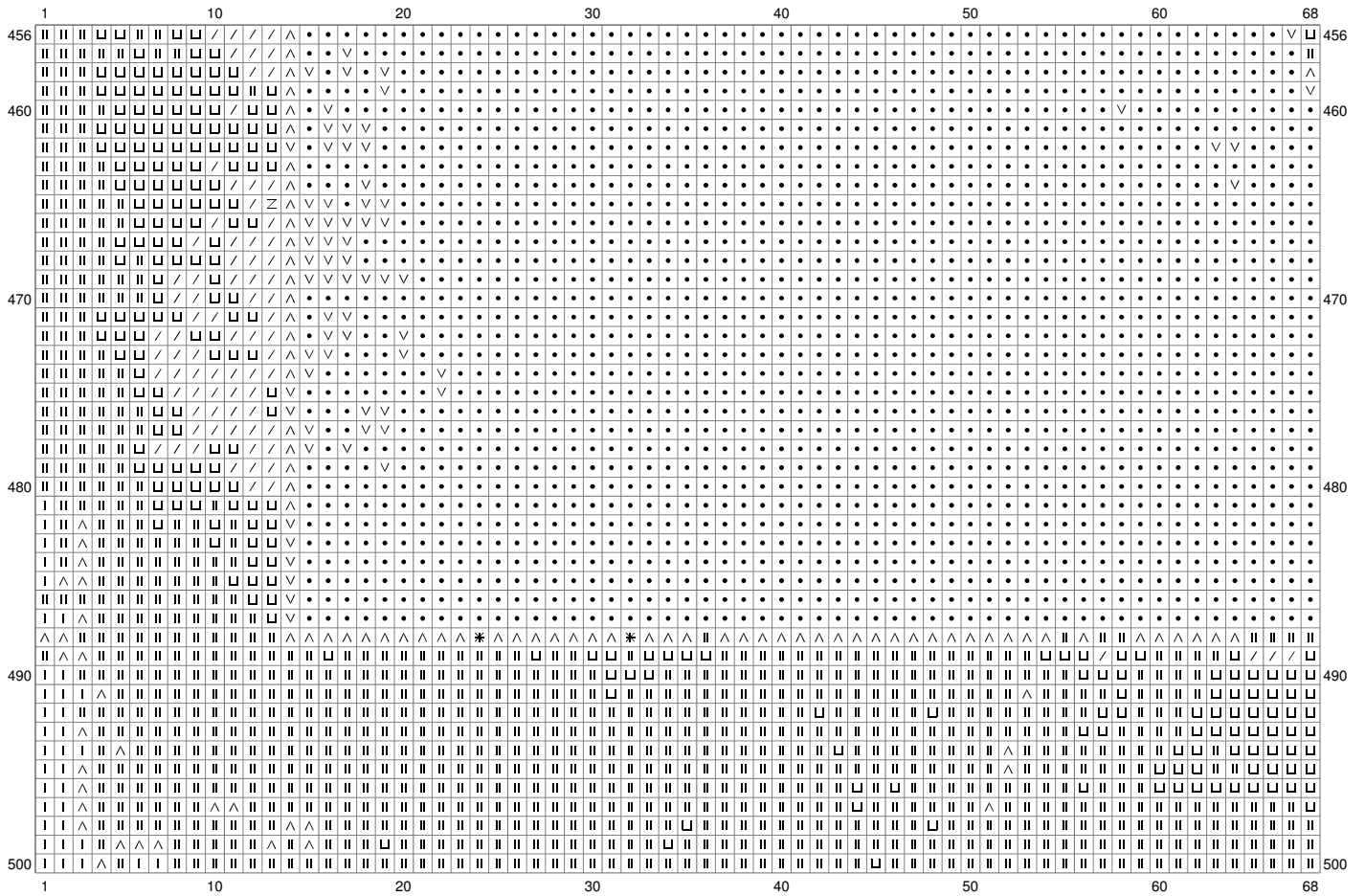
Untitled



Untitled

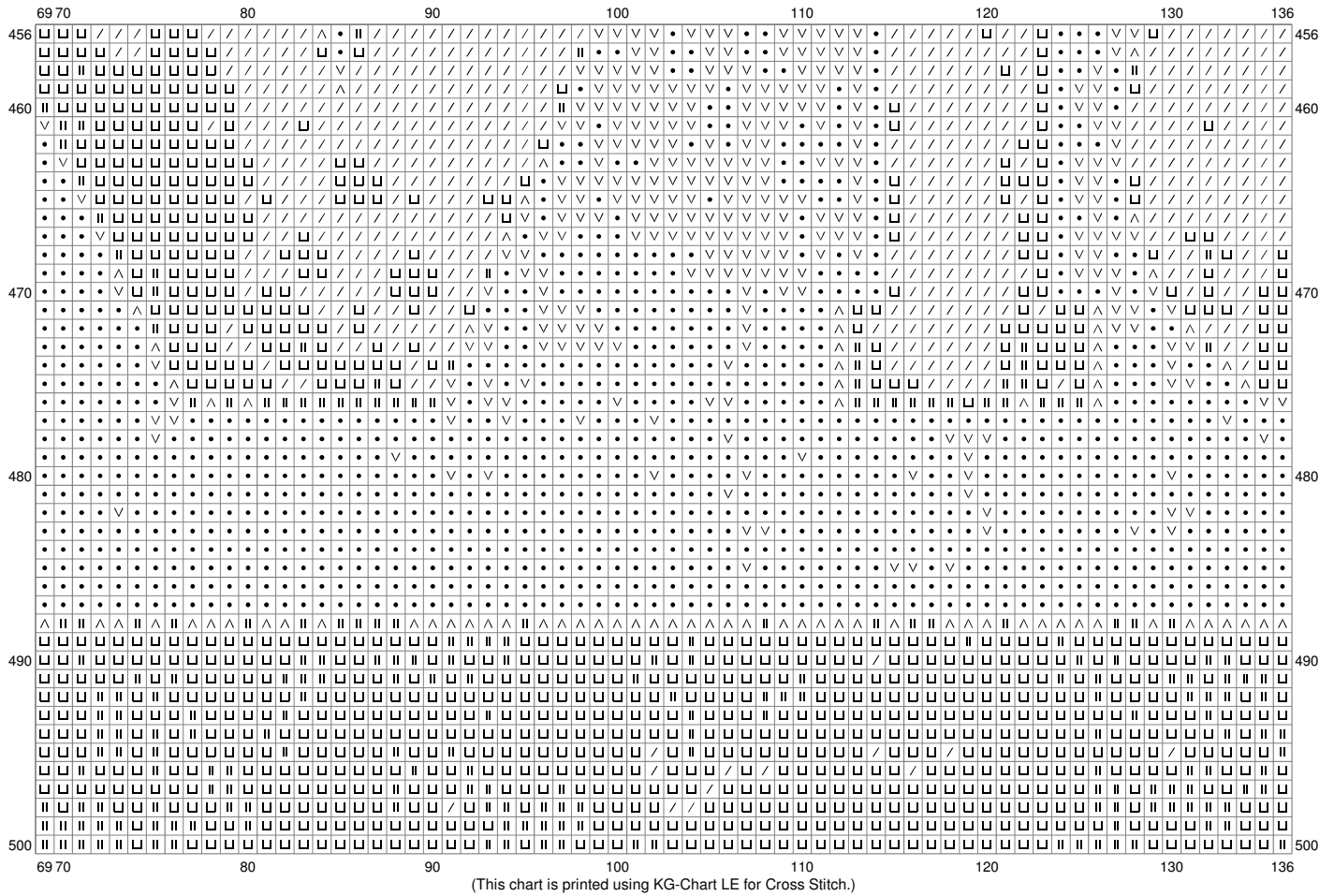


Untitled

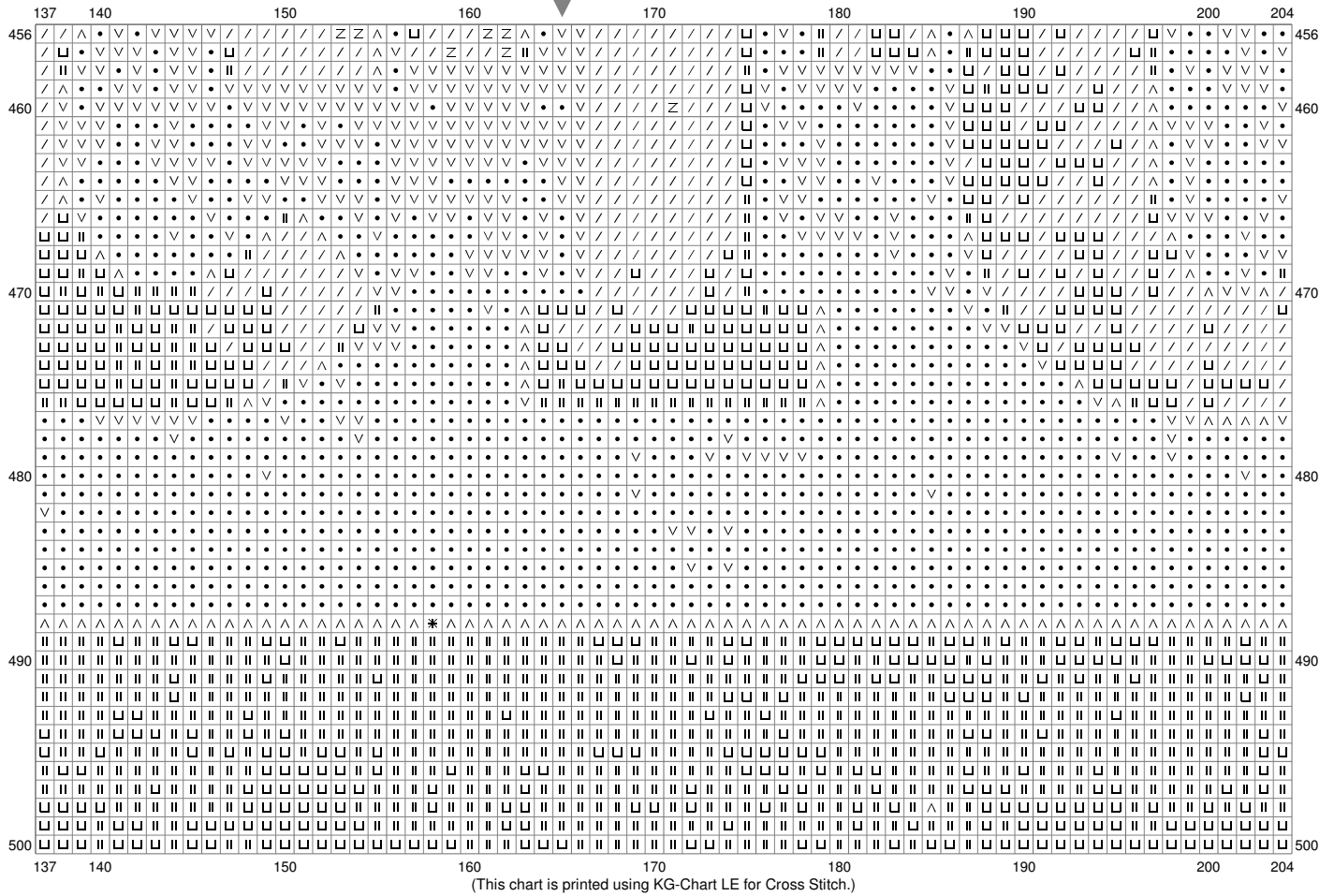


(This chart is printed using KG-Chart LE for Cross Stitch.)

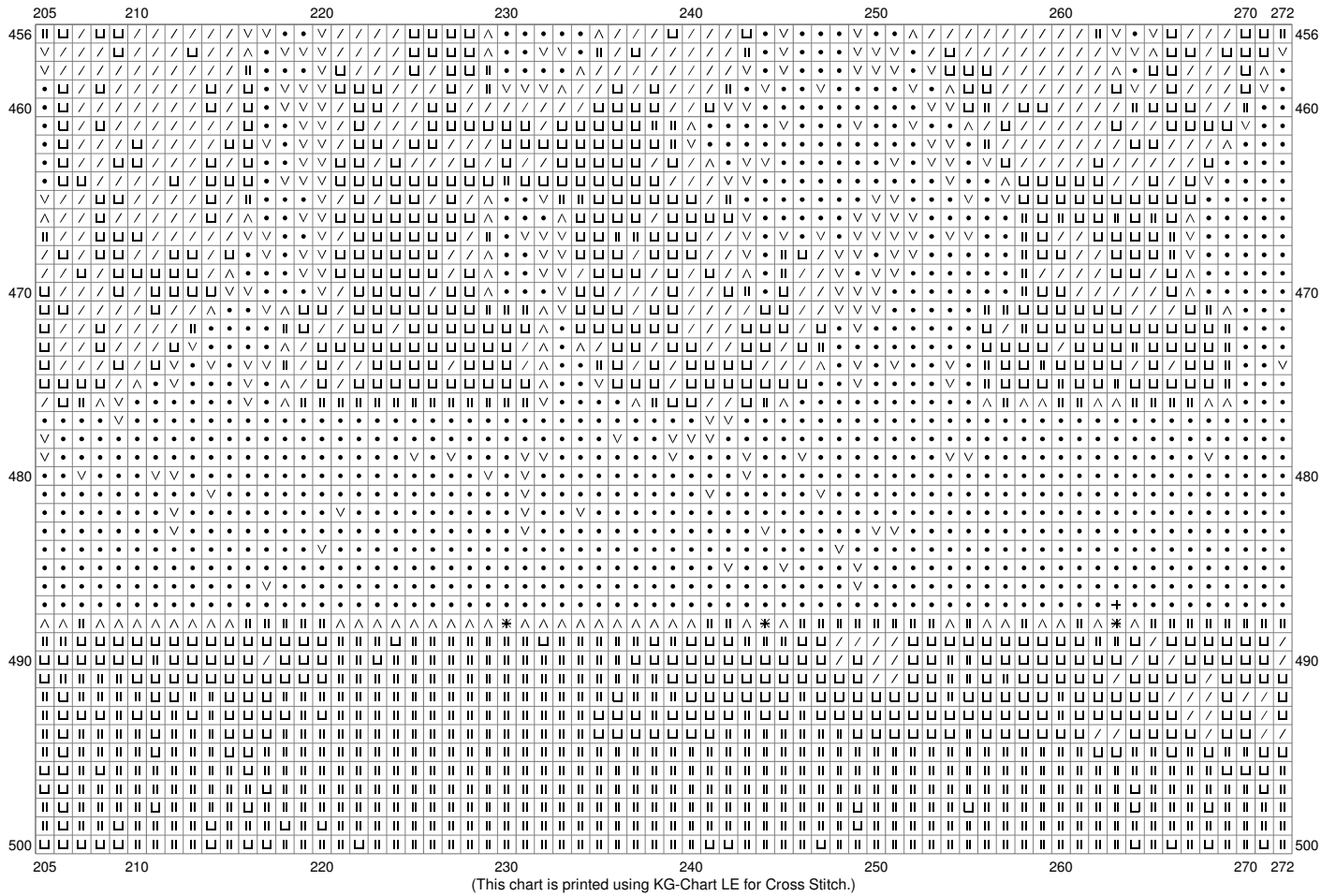
Untitled



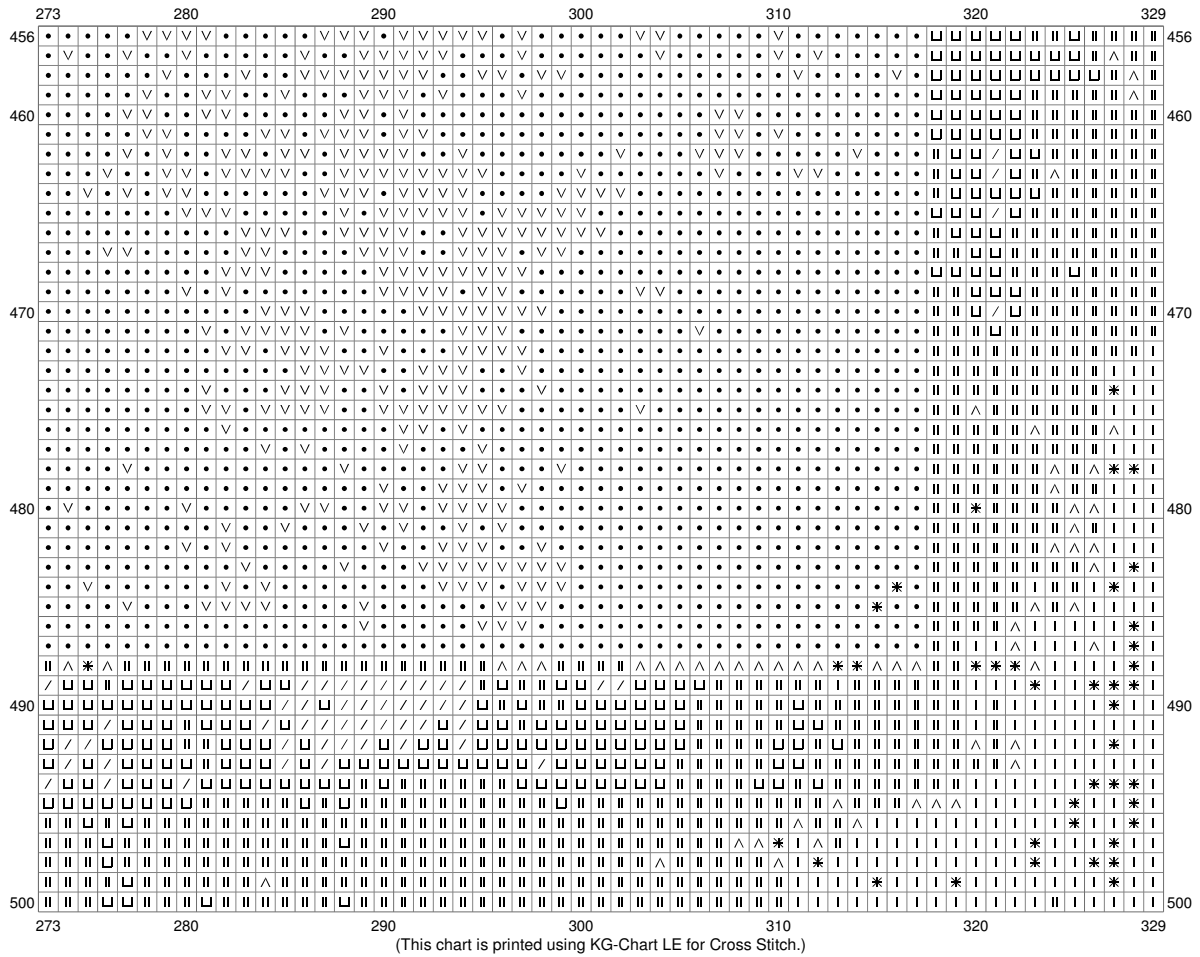
Untitled



Untitled



Untitled



Untitled

Stitch Count: 329w x 500h

Finished Size: 119.38 cm x 181.42 cm (14 ct./inch)

















Cloth: Aida

Cloth's Color: White

of colors: 16 Colors

Color Table (DMC)

Cross Stitch

	939	(7222 ct)
	895	(1339 ct)
	3847	(10436 ct)
	3808	(15467 ct)
	924	(5615 ct)
	801	(781 ct)
	3768	(8576 ct)
	926	(4262 ct)
	3777	(11184 ct)
	918	(24792 ct)
	400	(1126 ct)
	3863	(5229 ct)
	646	(11591 ct)
	3864	(11455 ct)
	676	(19595 ct)
	677	(25830 ct)