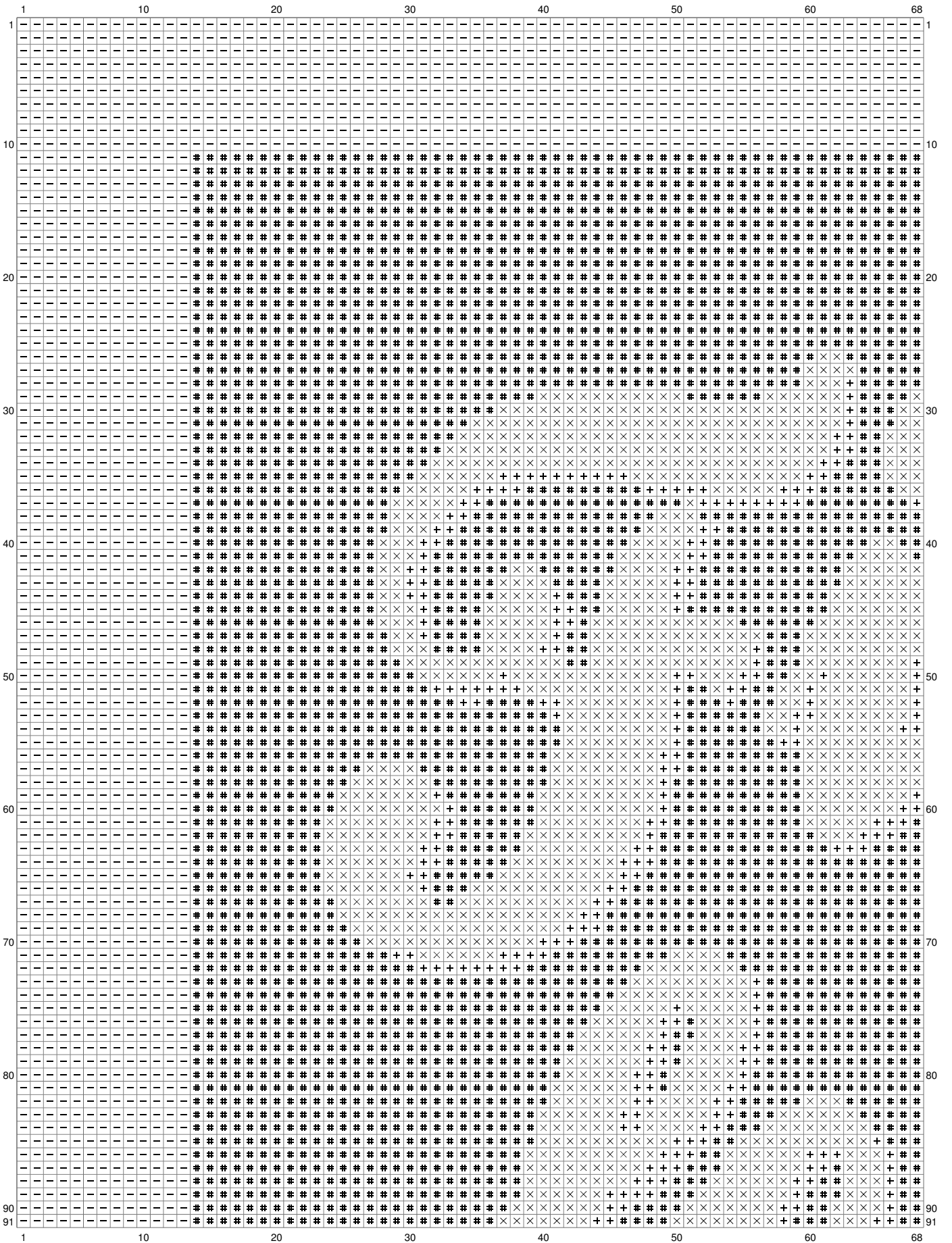
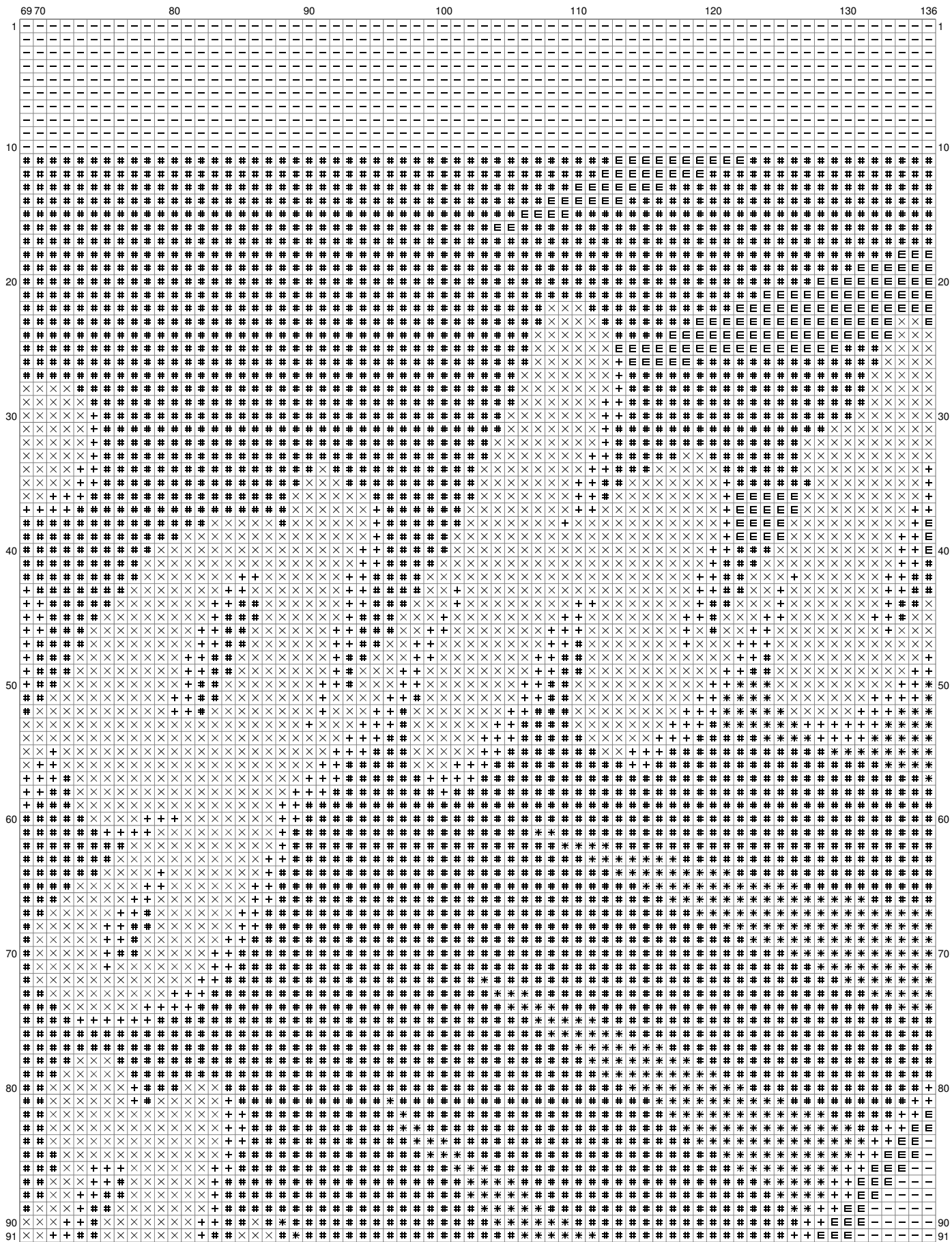


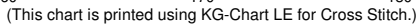
Untitled



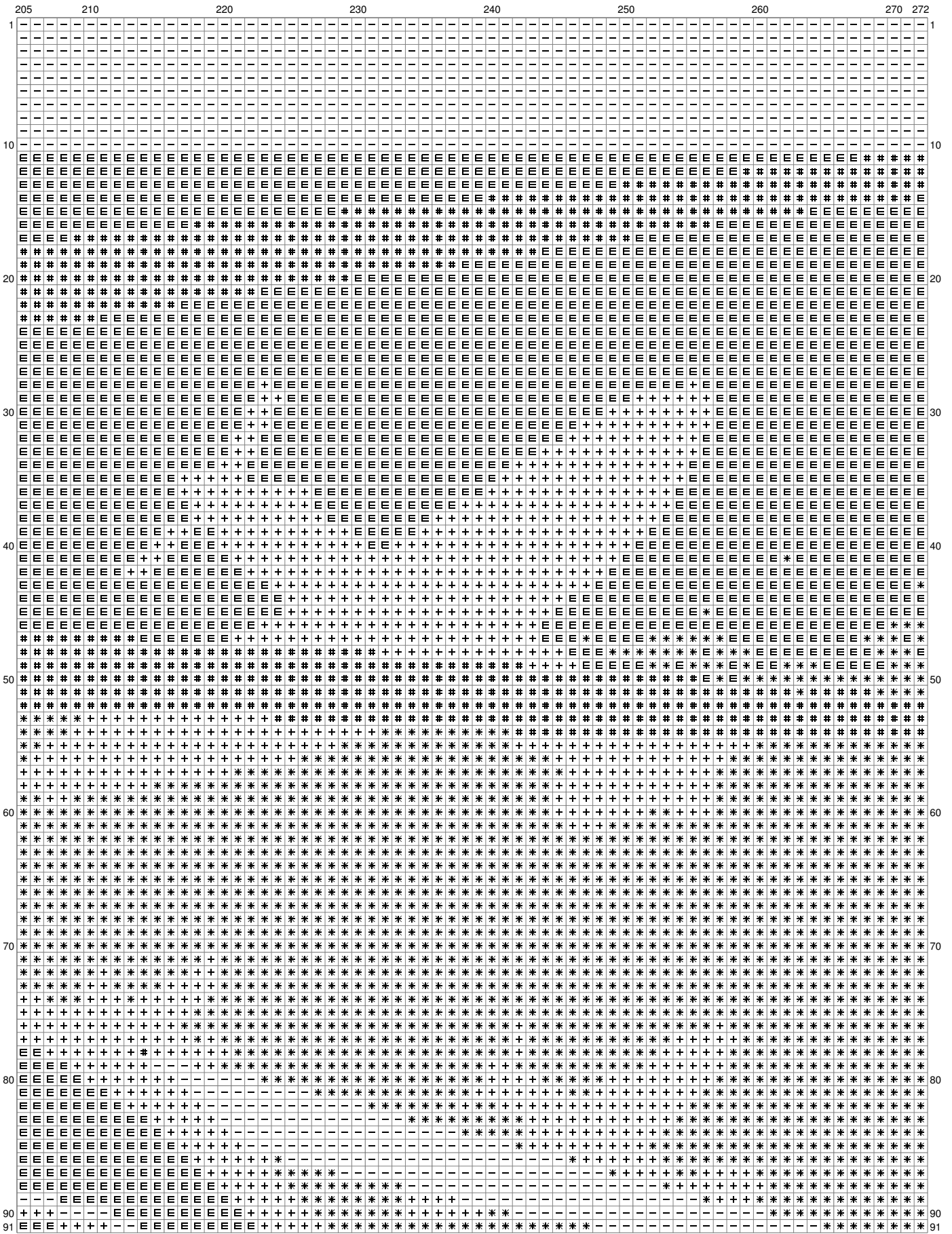
Untitled



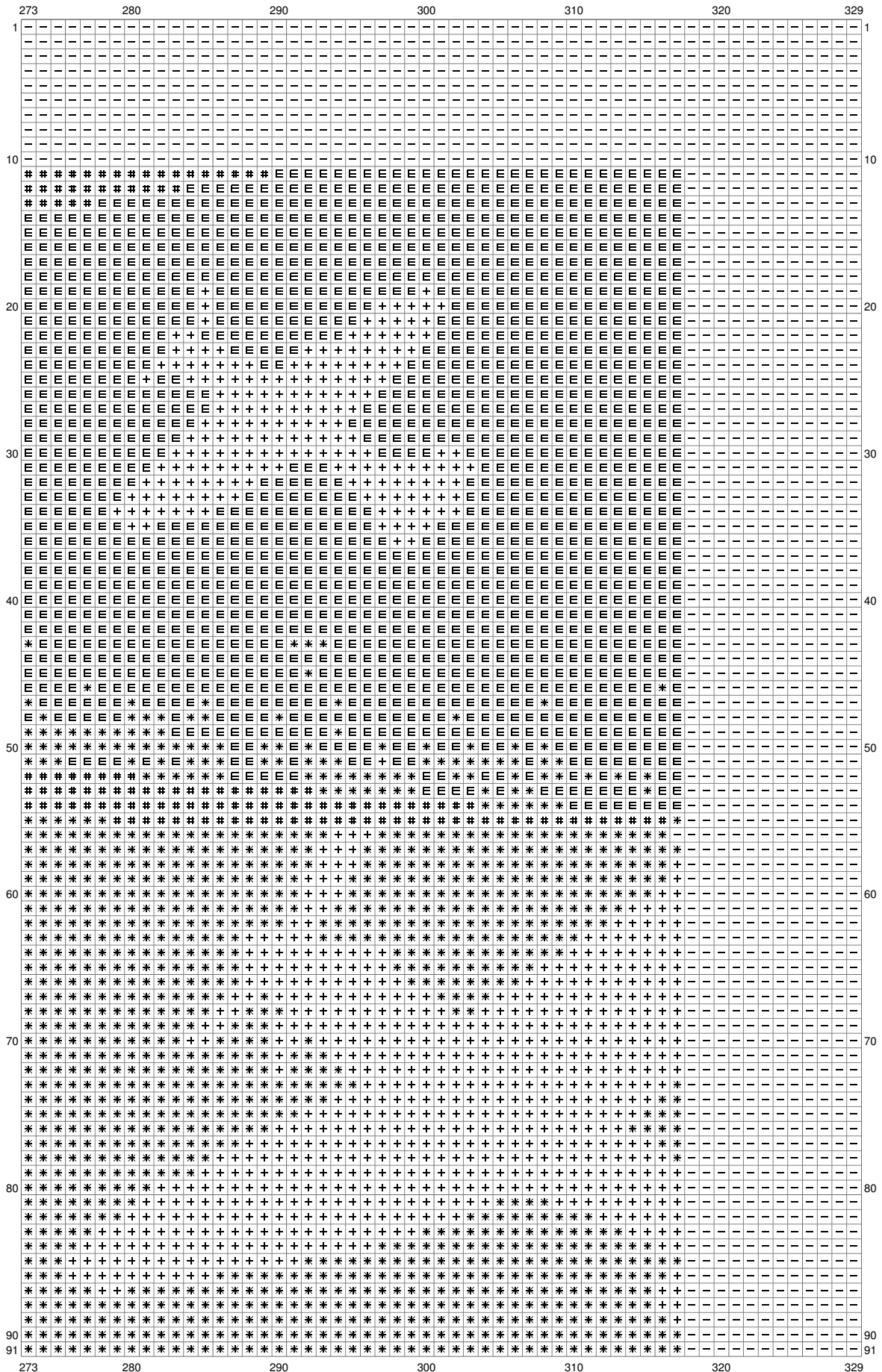
(This chart is printed using KG-Chart LE for Cross Stitch.)



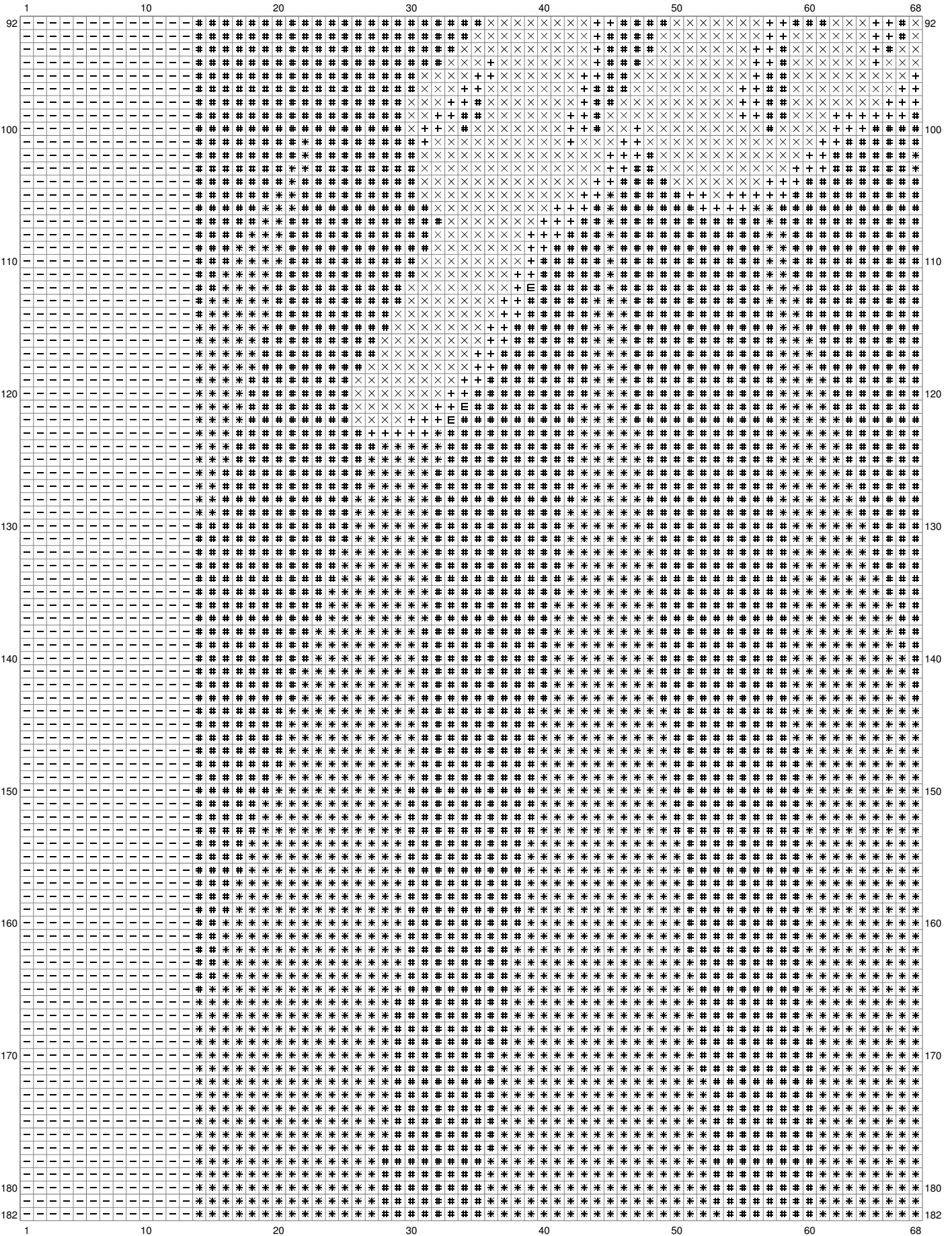
Untitled



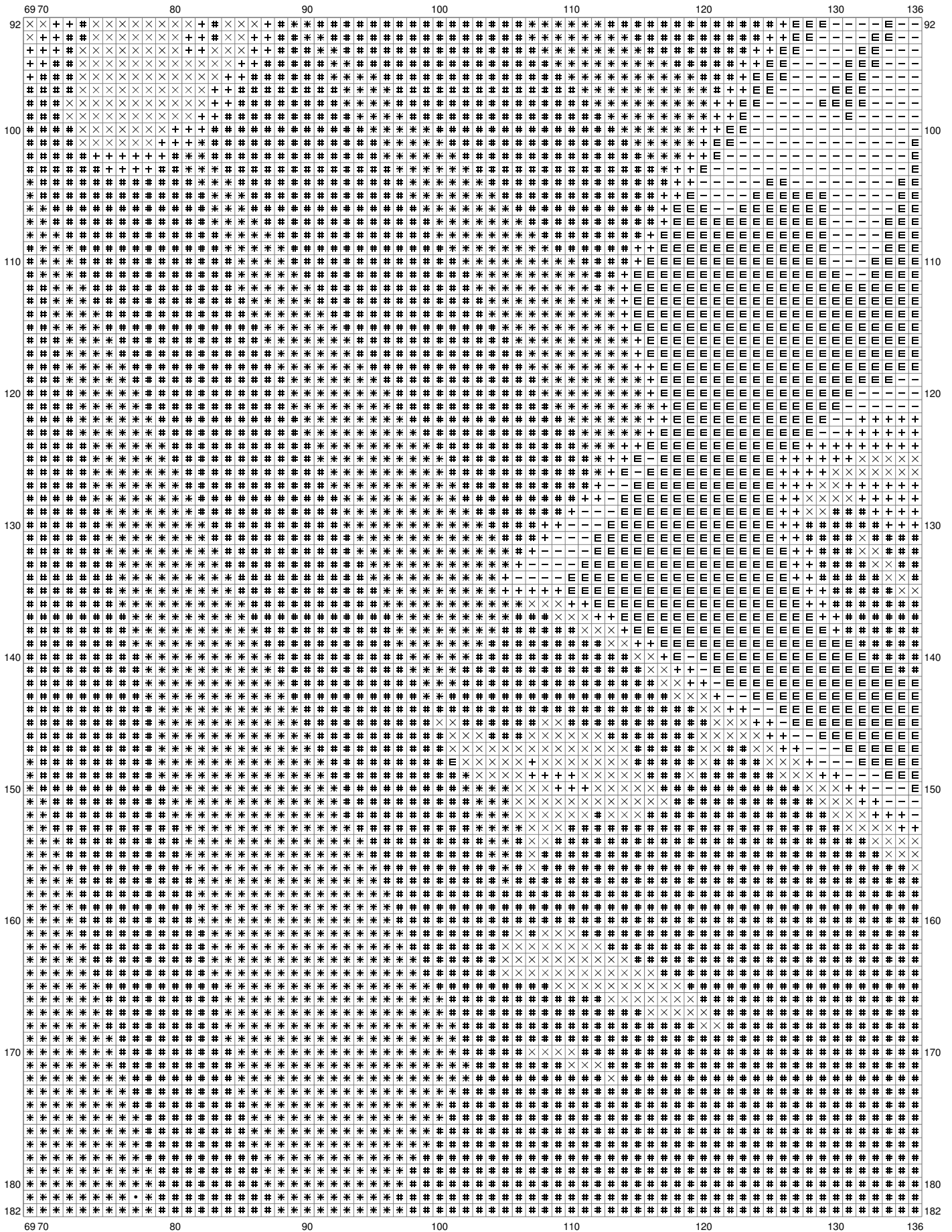
Untitled



Untitled

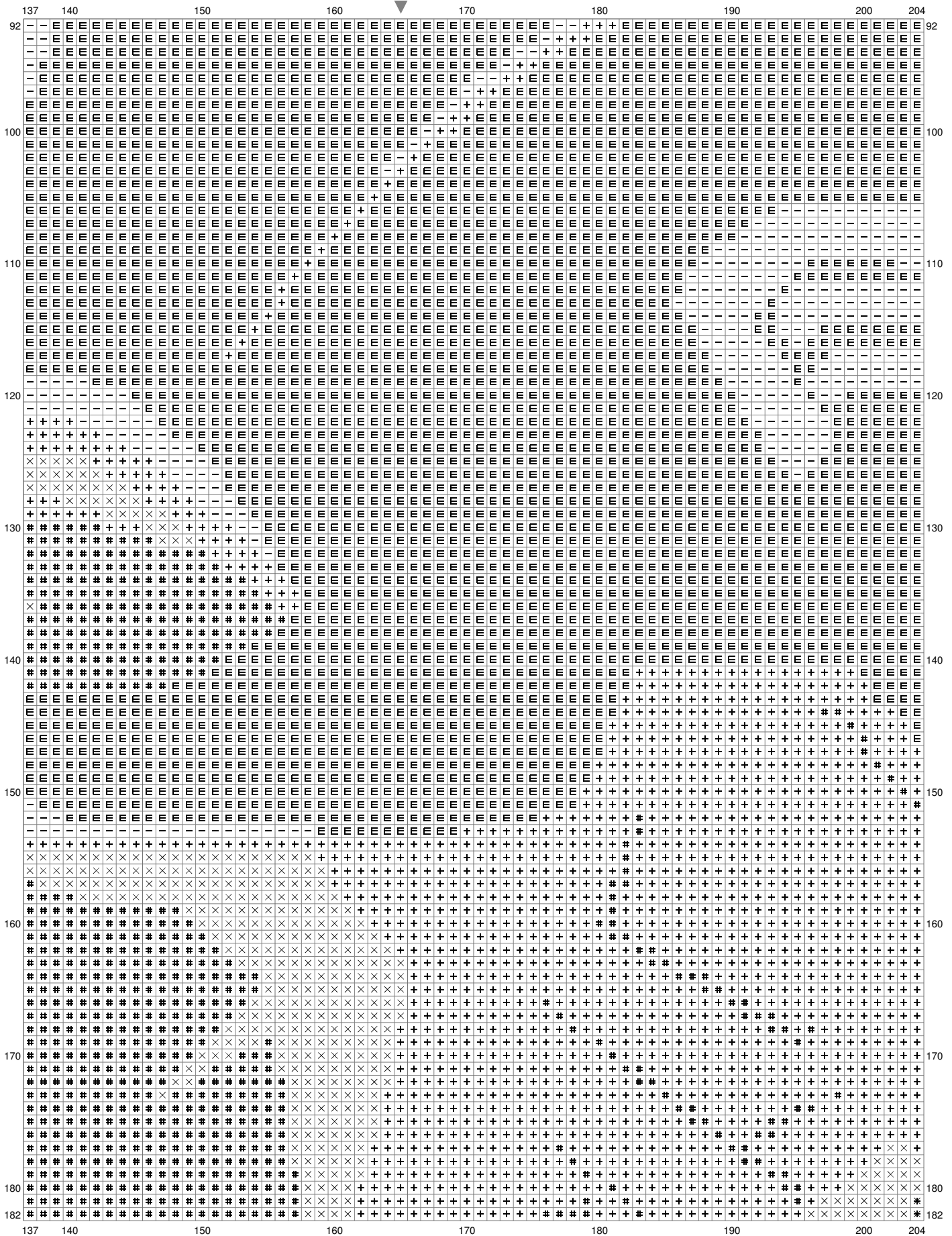


Untitled

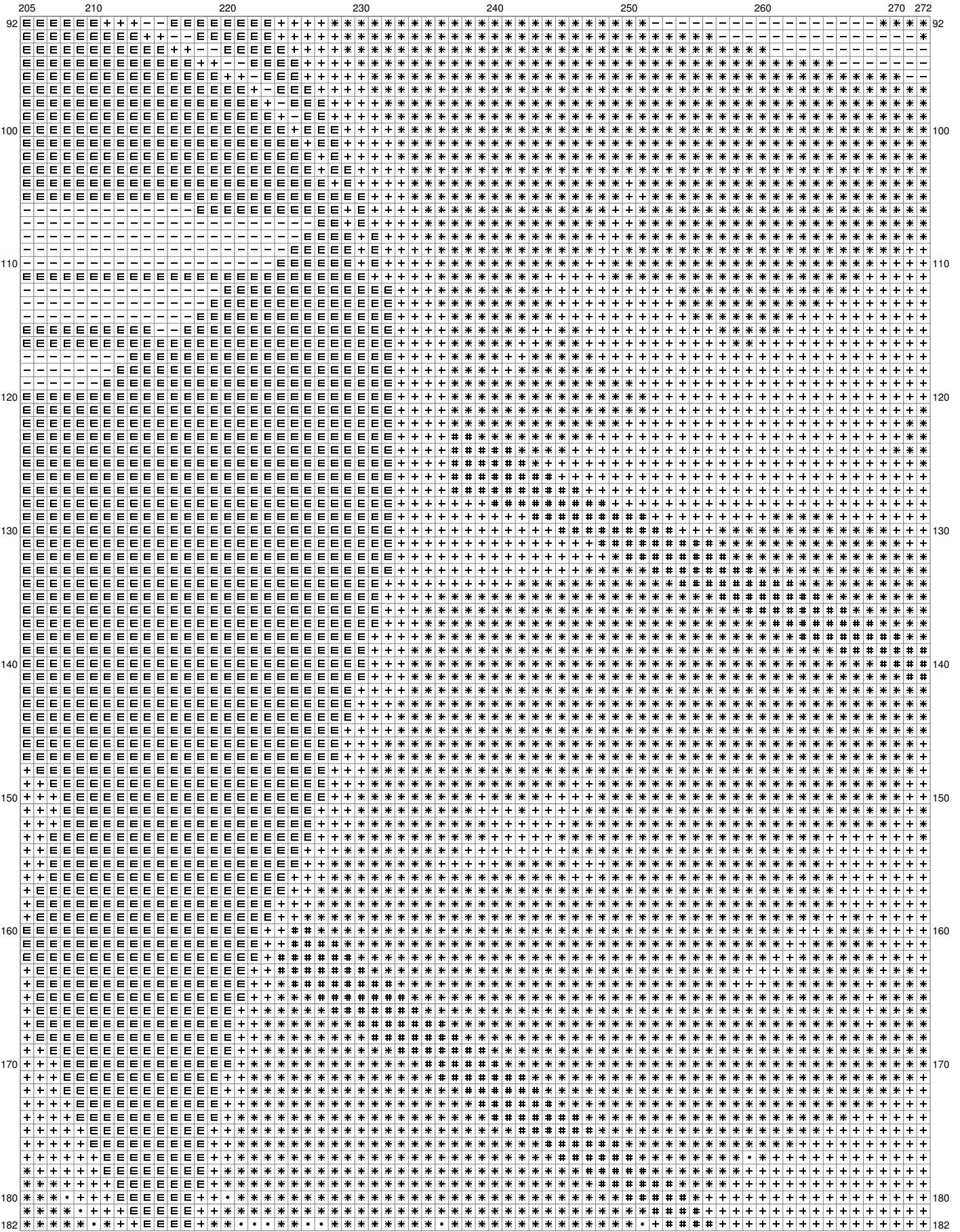


(This chart is printed using KG-Chart LE for Cross Stitch.)

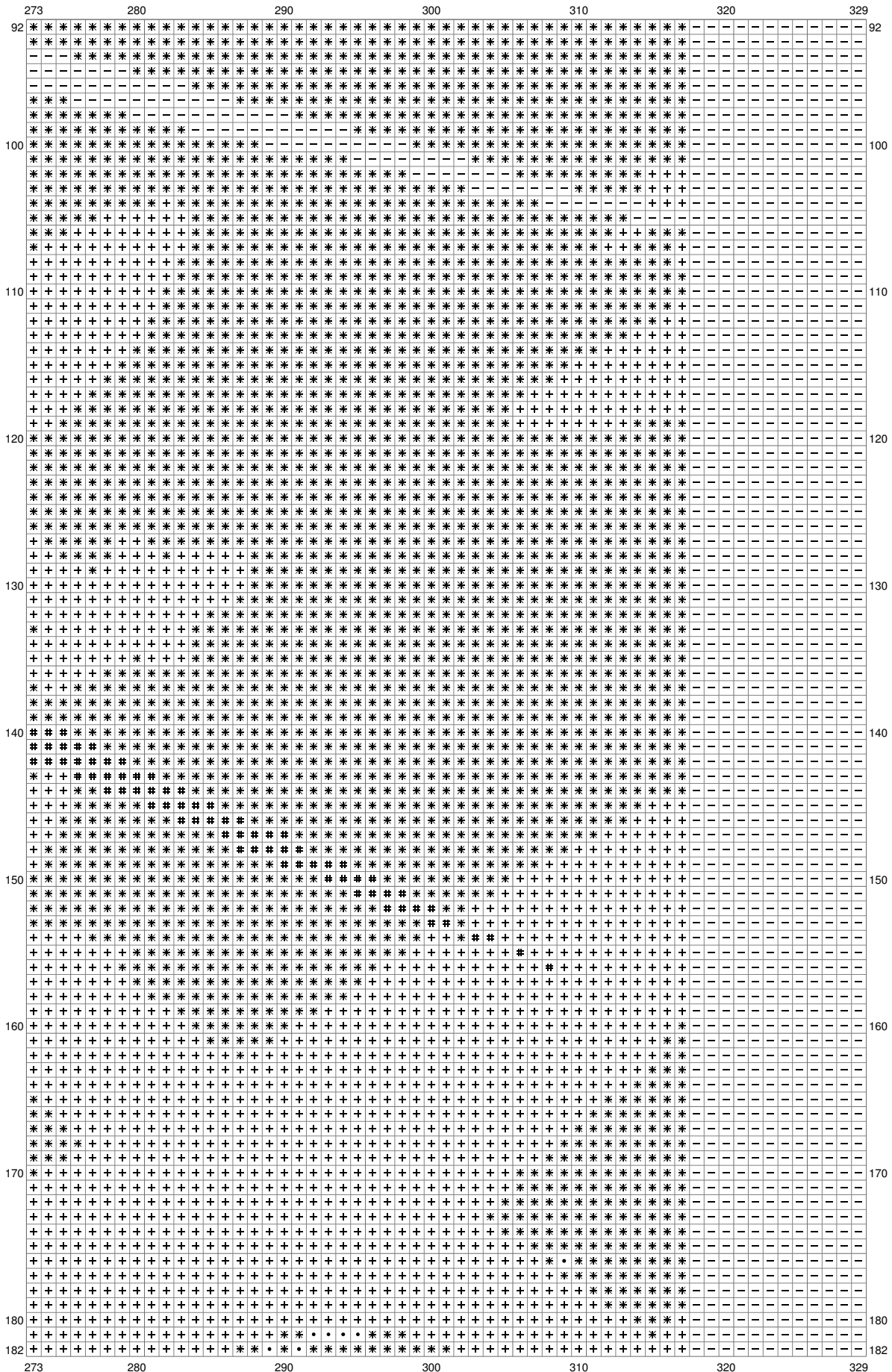
Untitled



Untitled

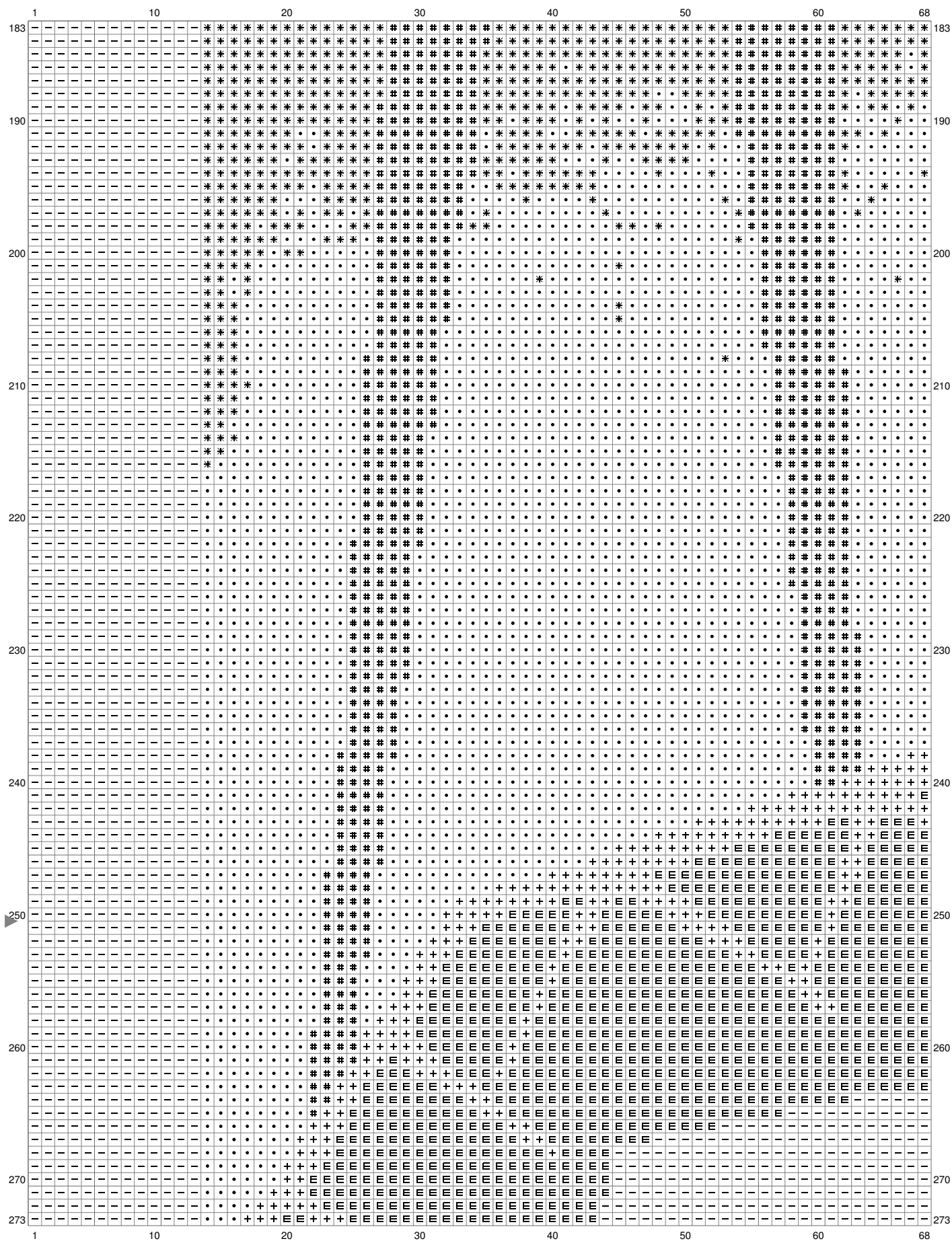


Untitled

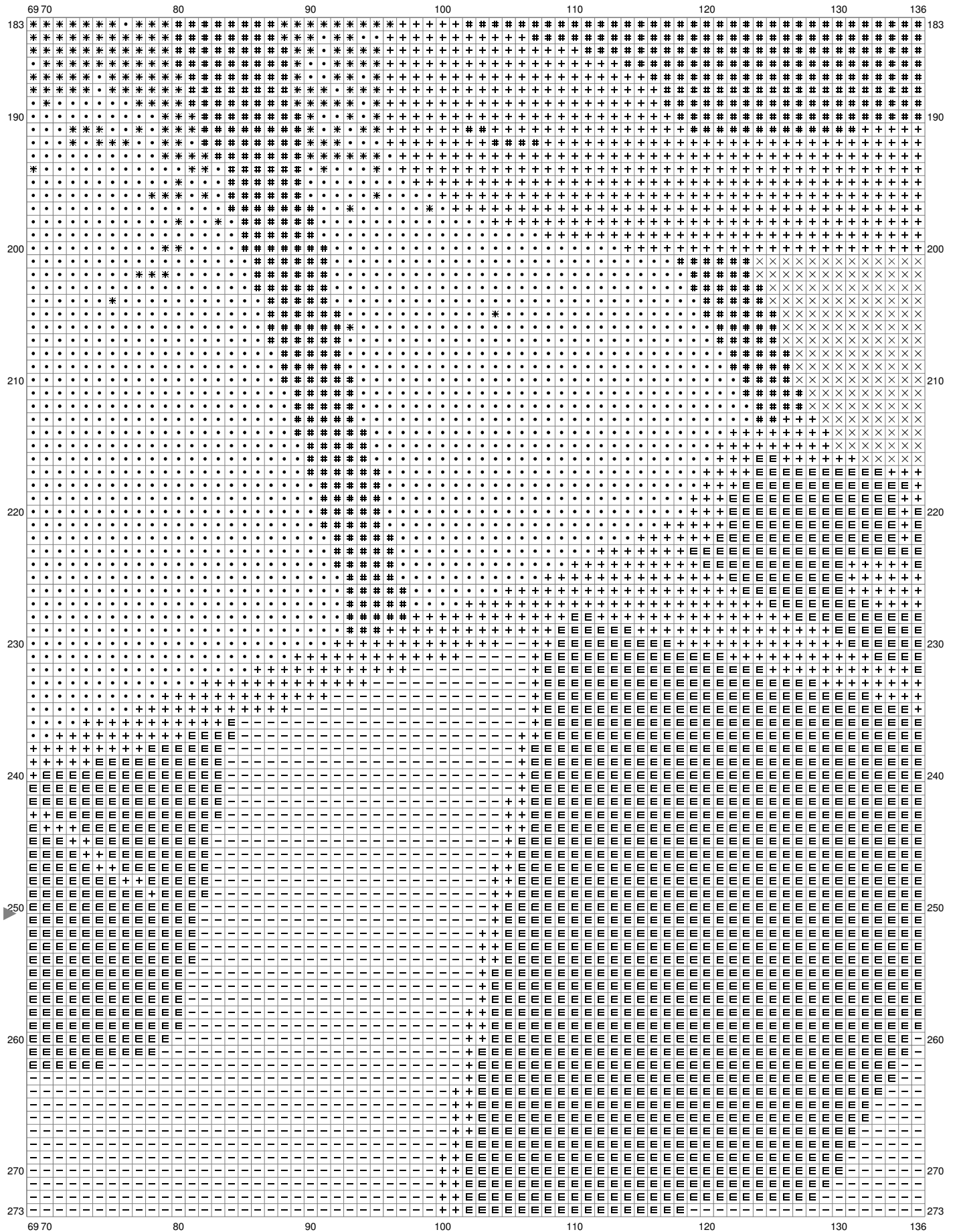


(This chart is printed using KG-Chart LE for Cross Stitch.)

Untitled

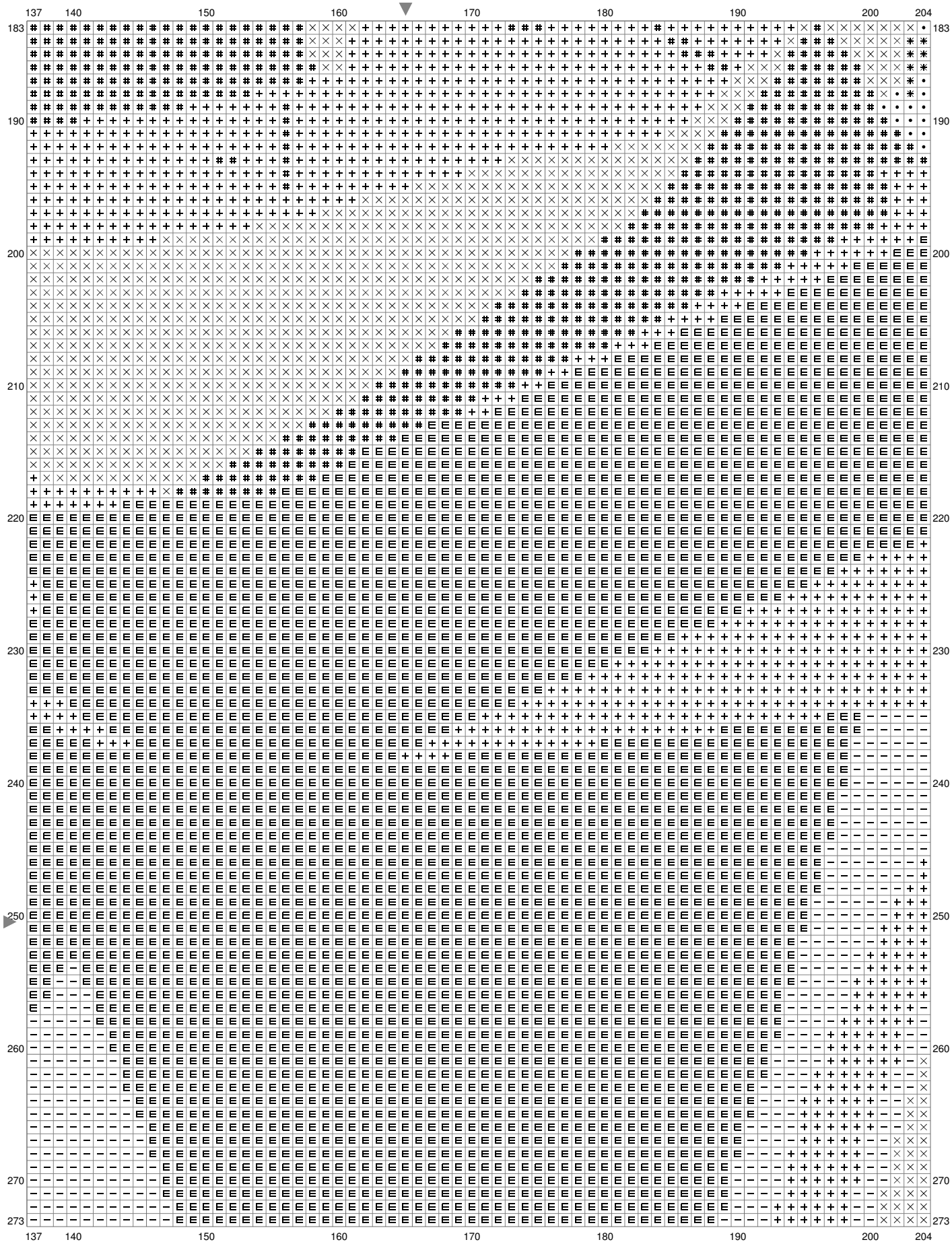


Untitled

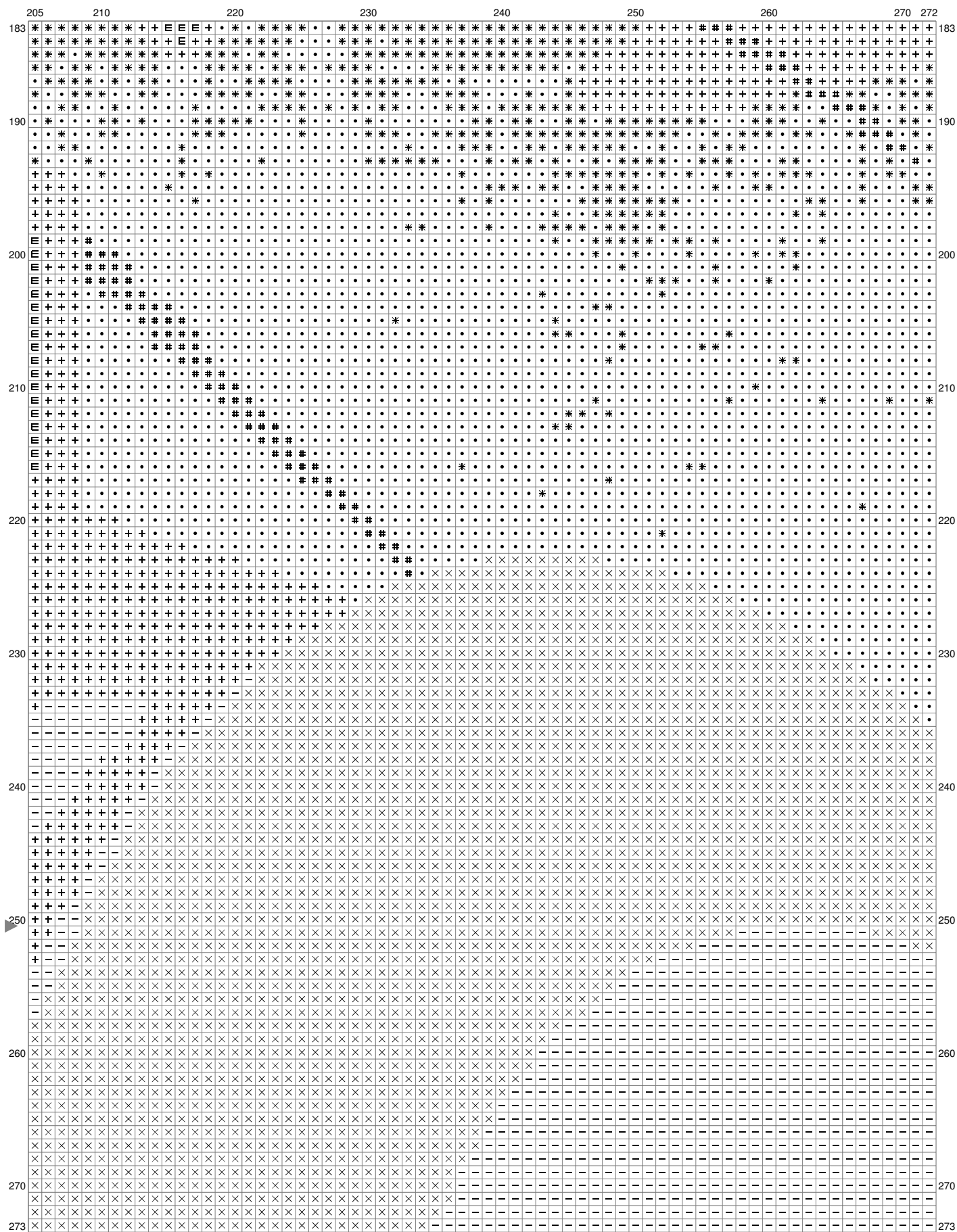


(This chart is printed using KG-Chart LE for Cross Stitch.)

Untitled

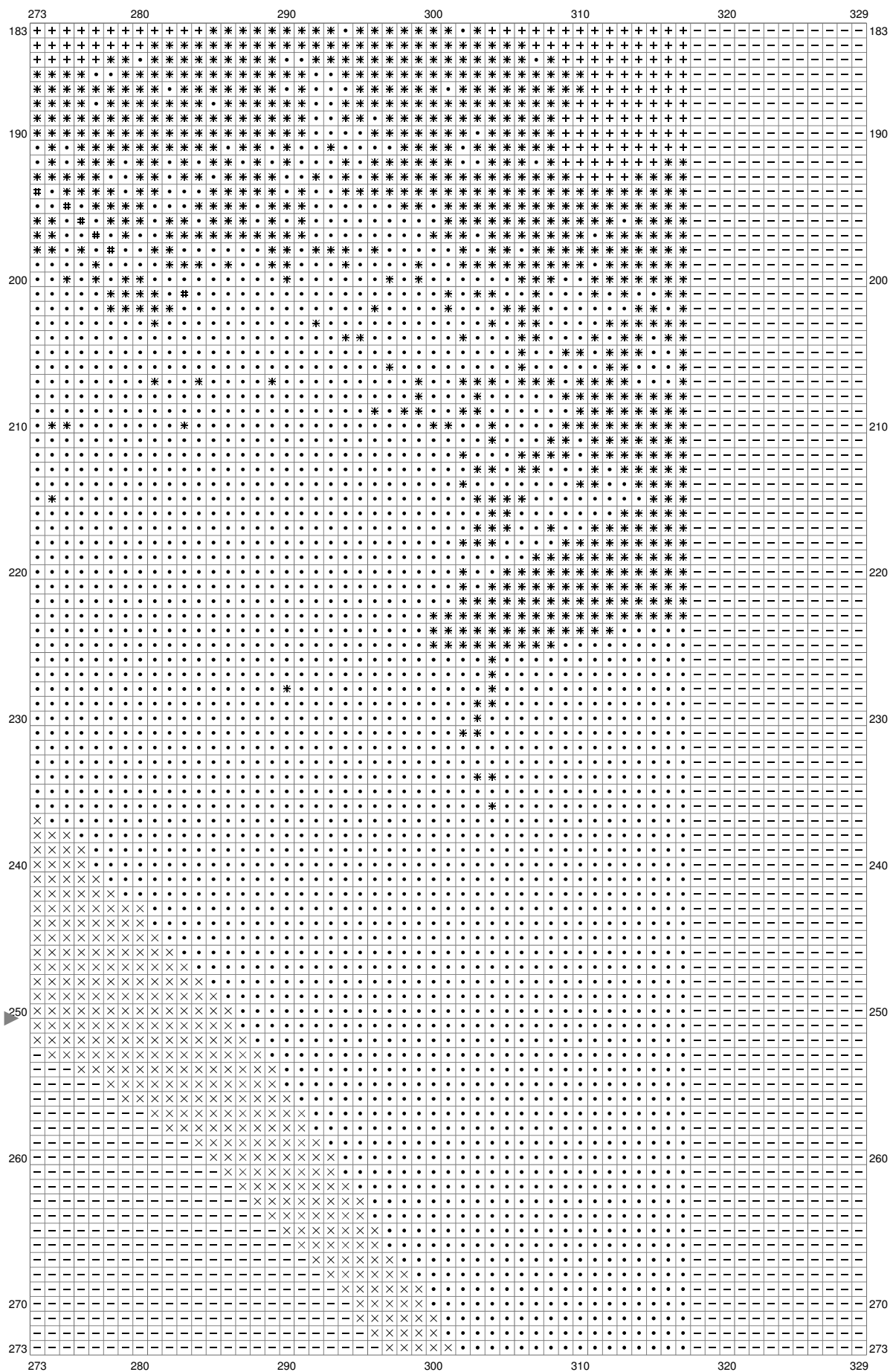


Untitled

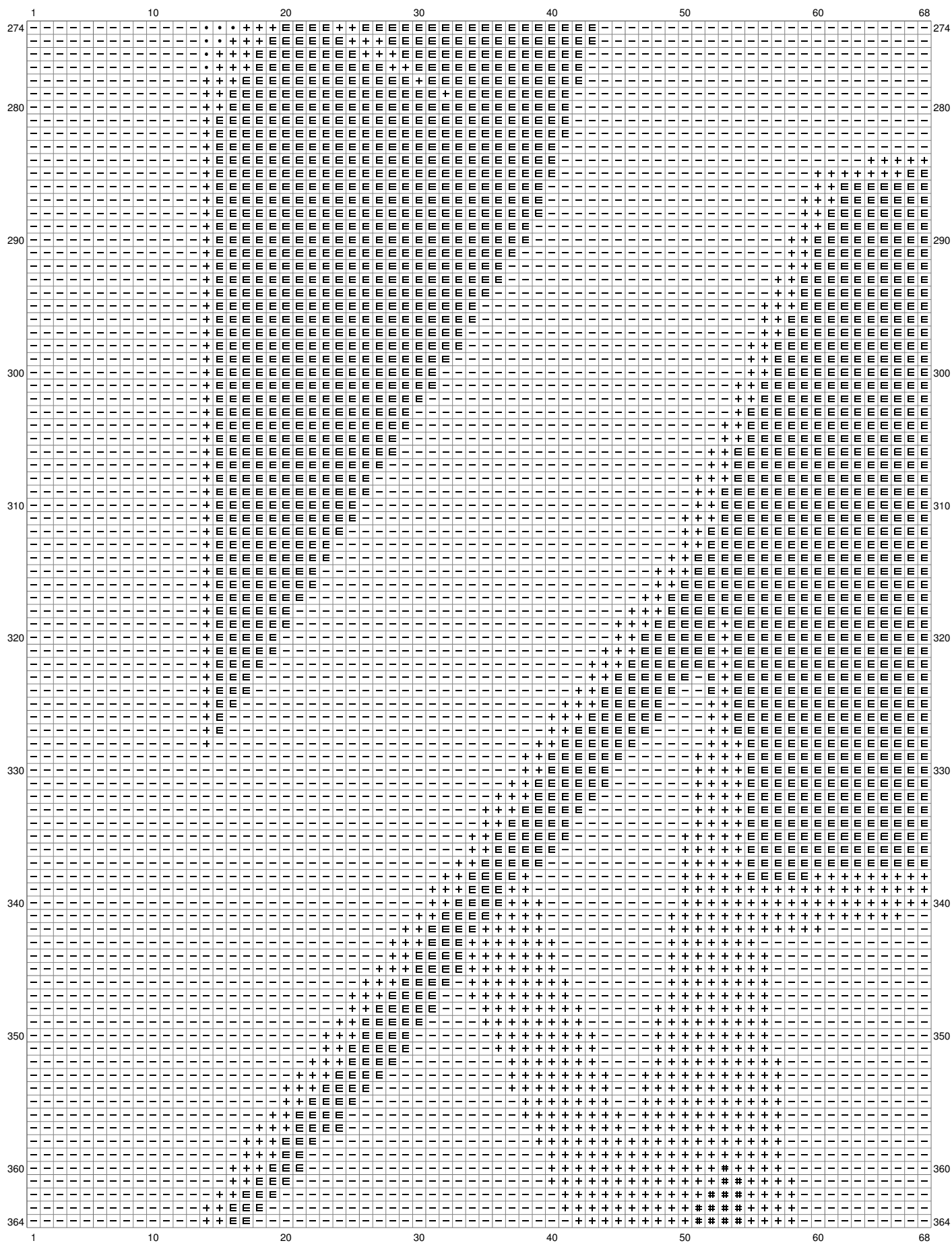


(This chart is printed using KG-Chart LE for Cross Stitch.)

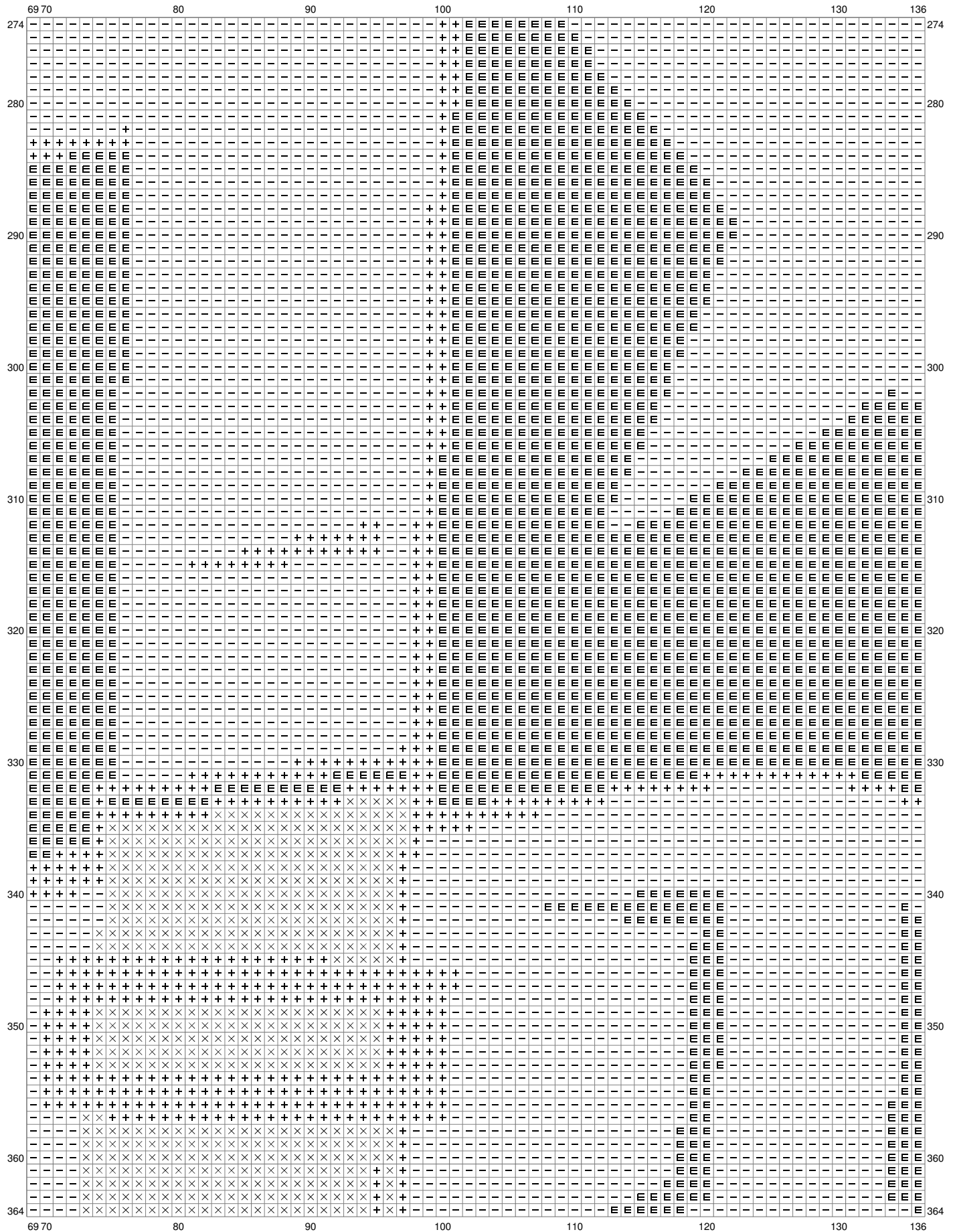
Untitled



Untitled

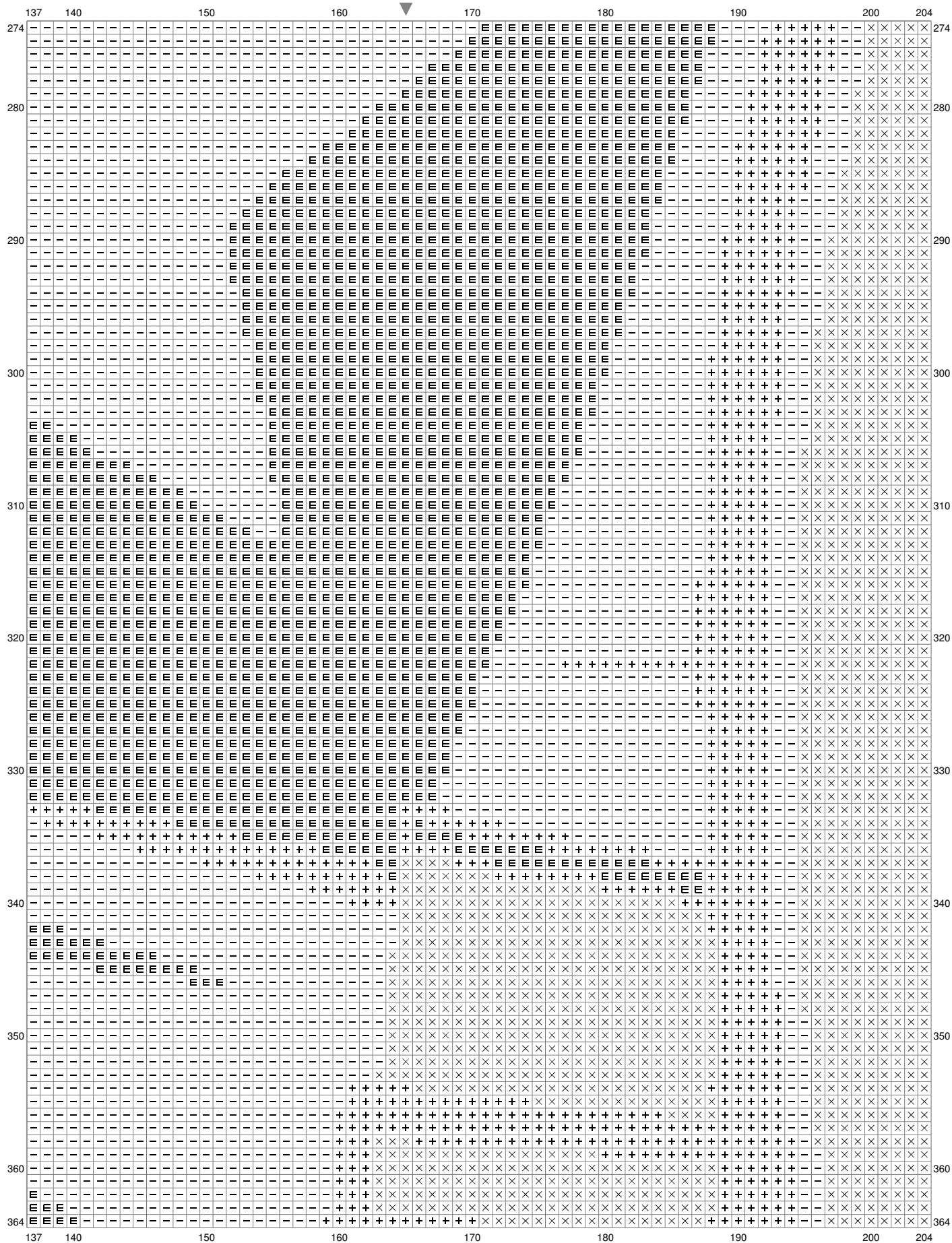


Untitled

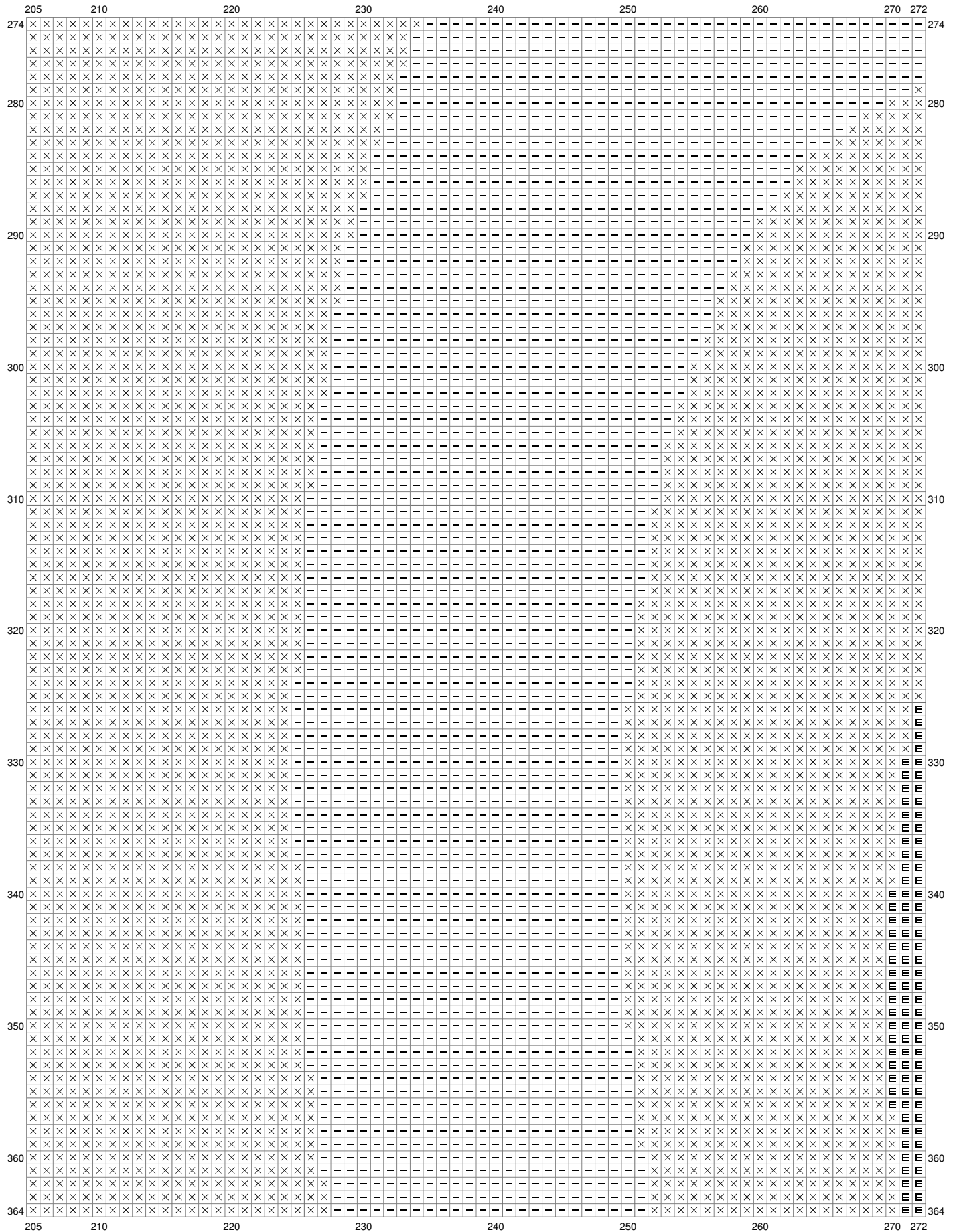


(This chart is printed using KG-Chart LE for Cross Stitch.)

Untitled

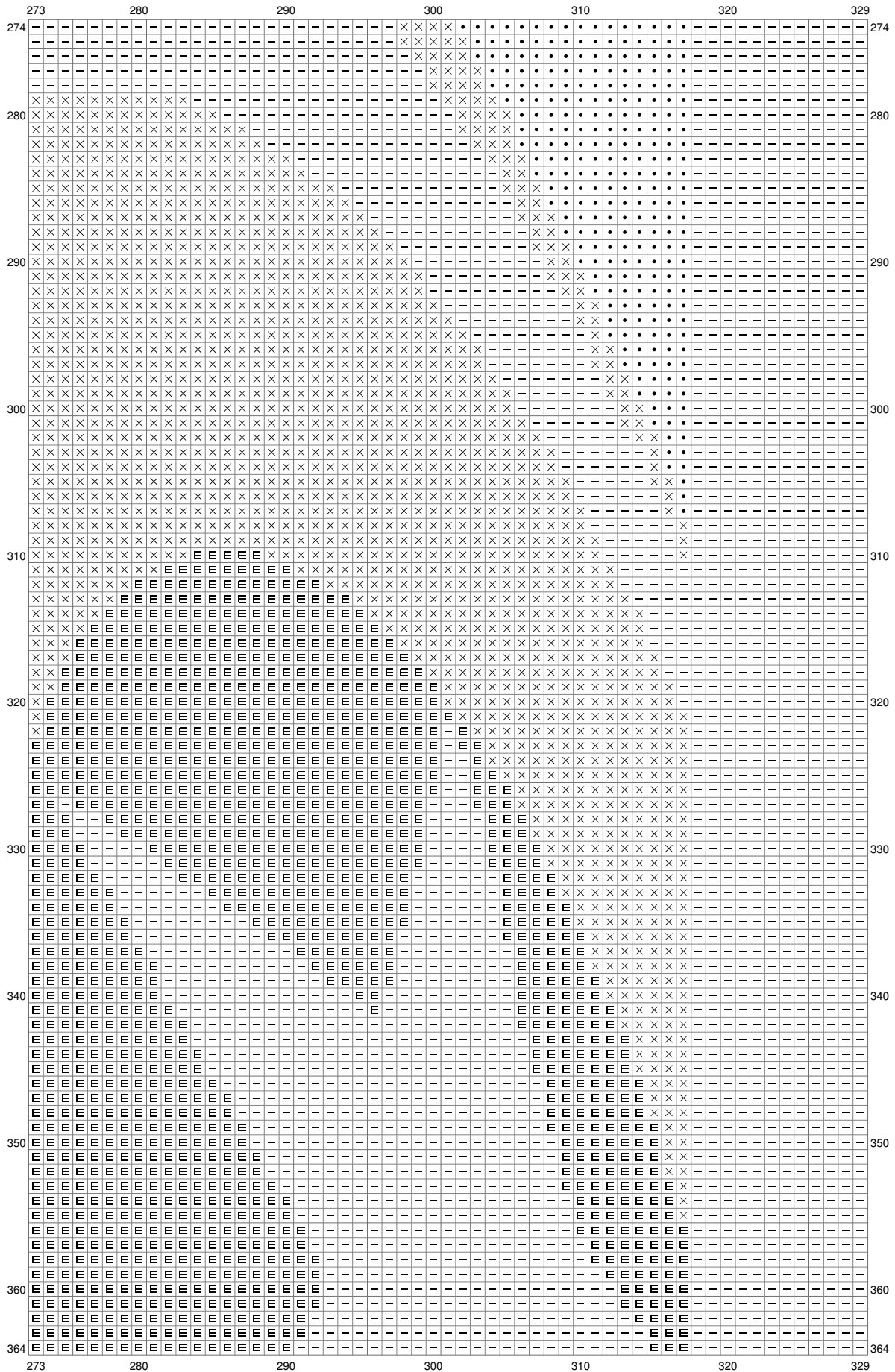


Untitled

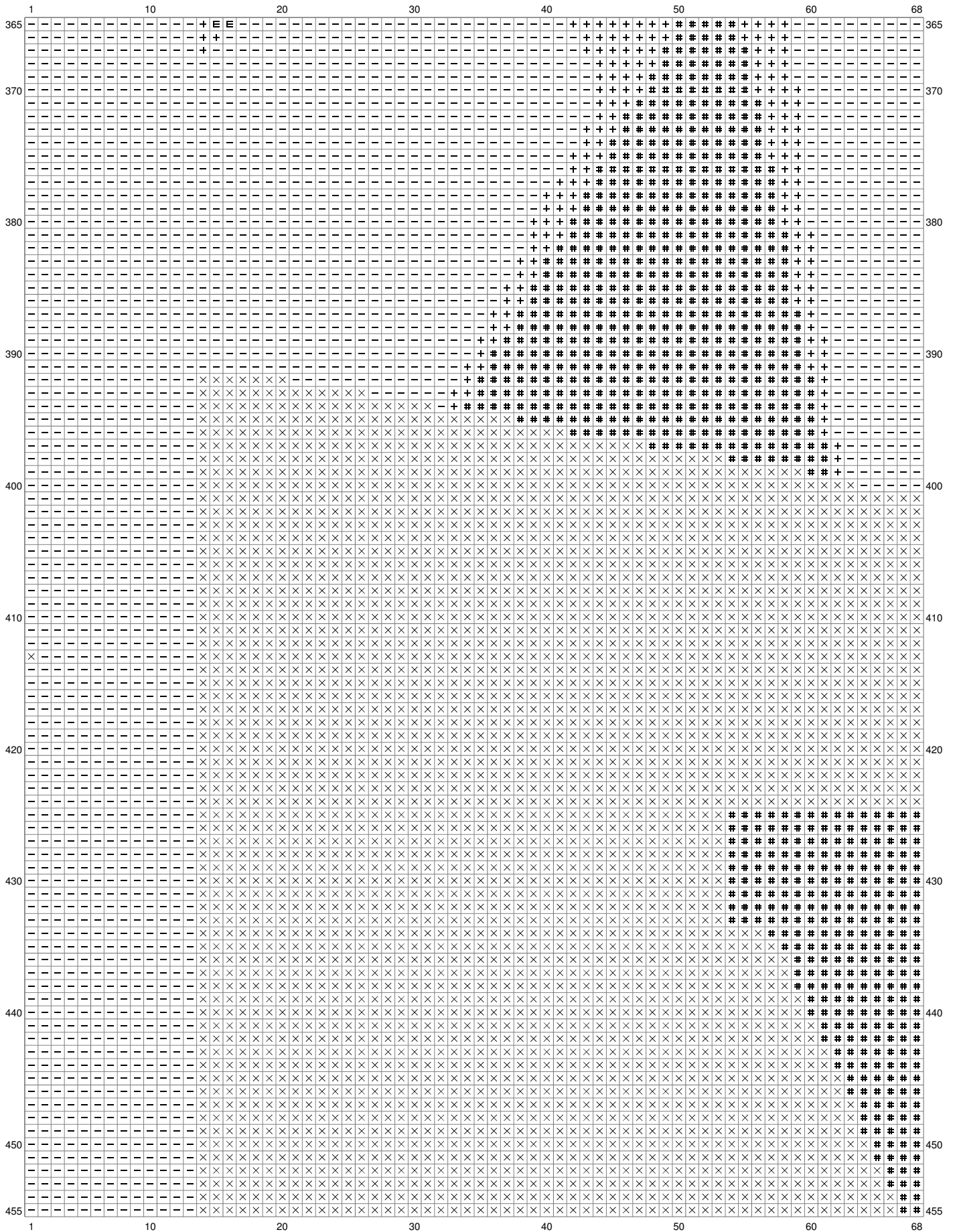


(This chart is printed using KG-Chart LE for Cross Stitch.)

Untitled

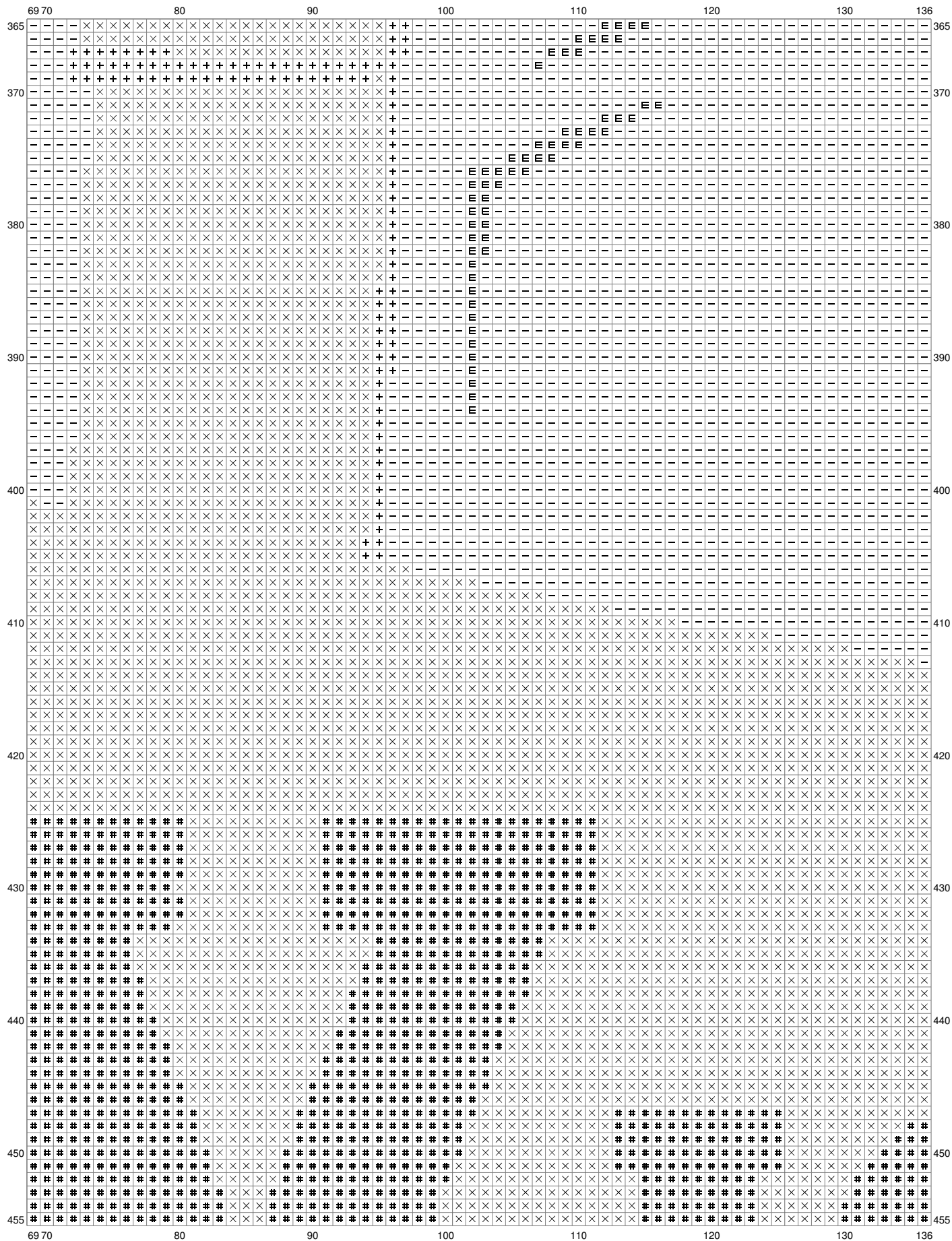


Untitled



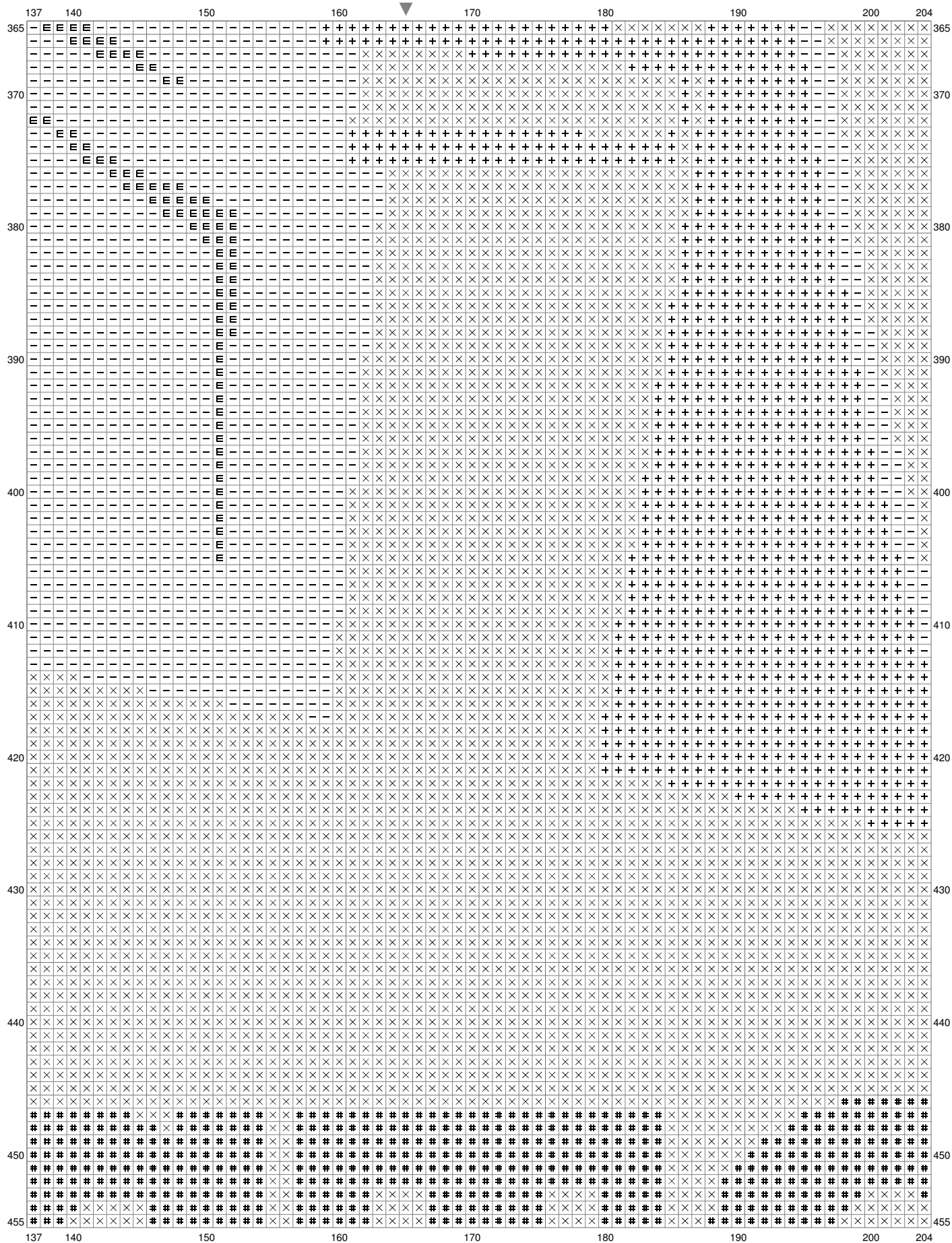
(This chart is printed using KG-Chart LE for Cross Stitch.)

Untitled



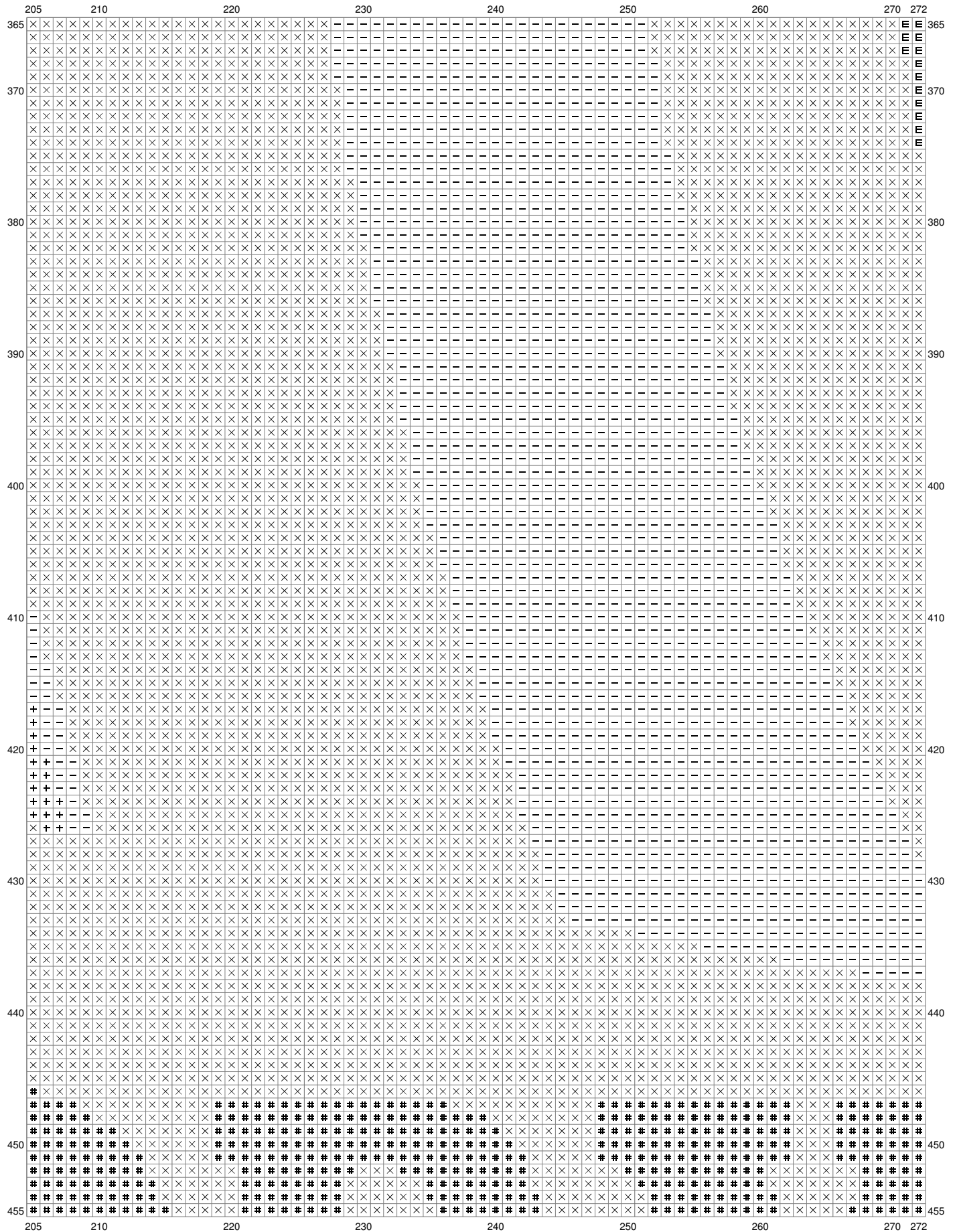
(This chart is printed using KG-Chart LE for Cross Stitch.)

Untitled

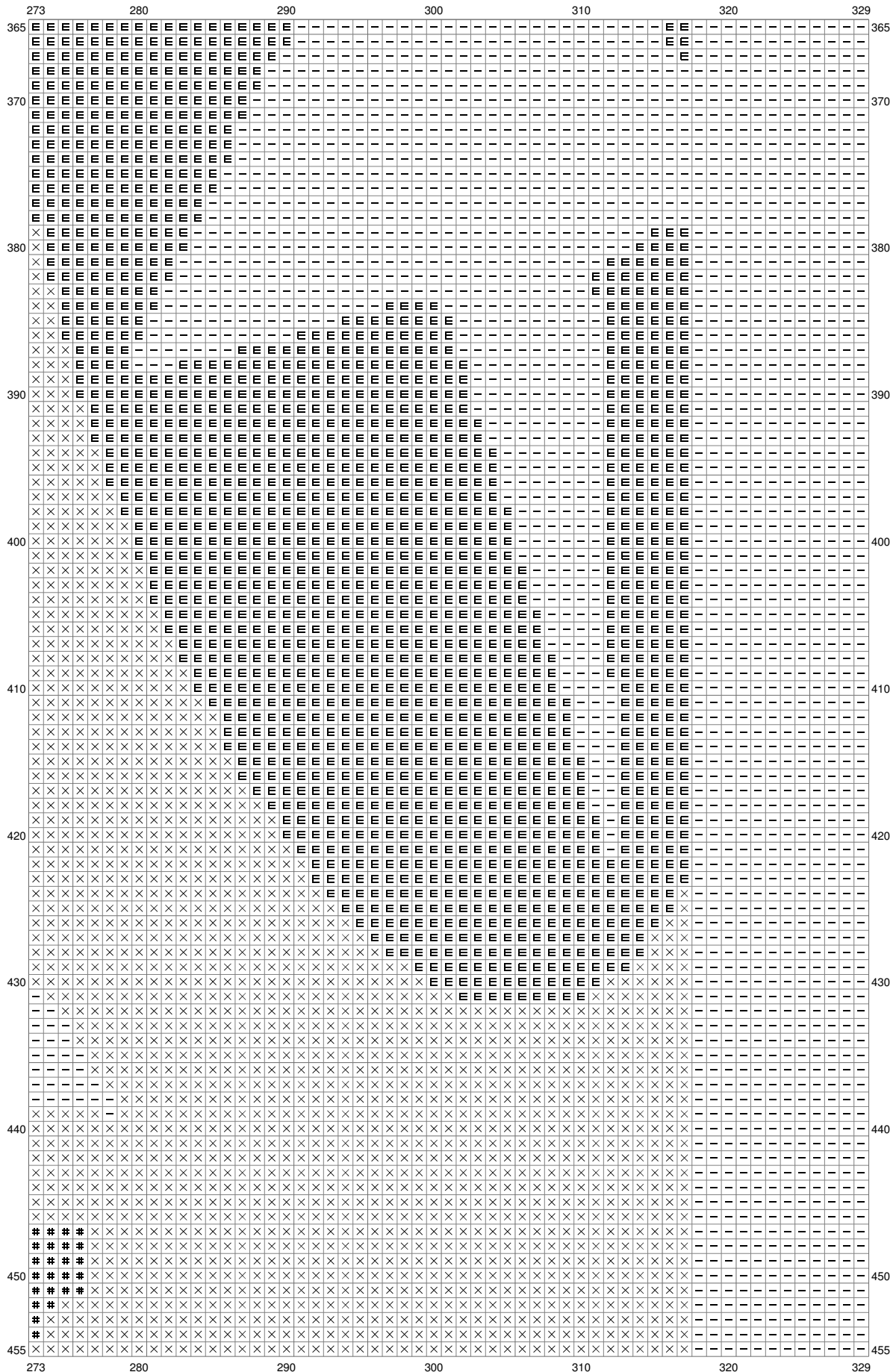


(This chart is printed using KG-Chart LE for Cross Stitch.)

Untitled

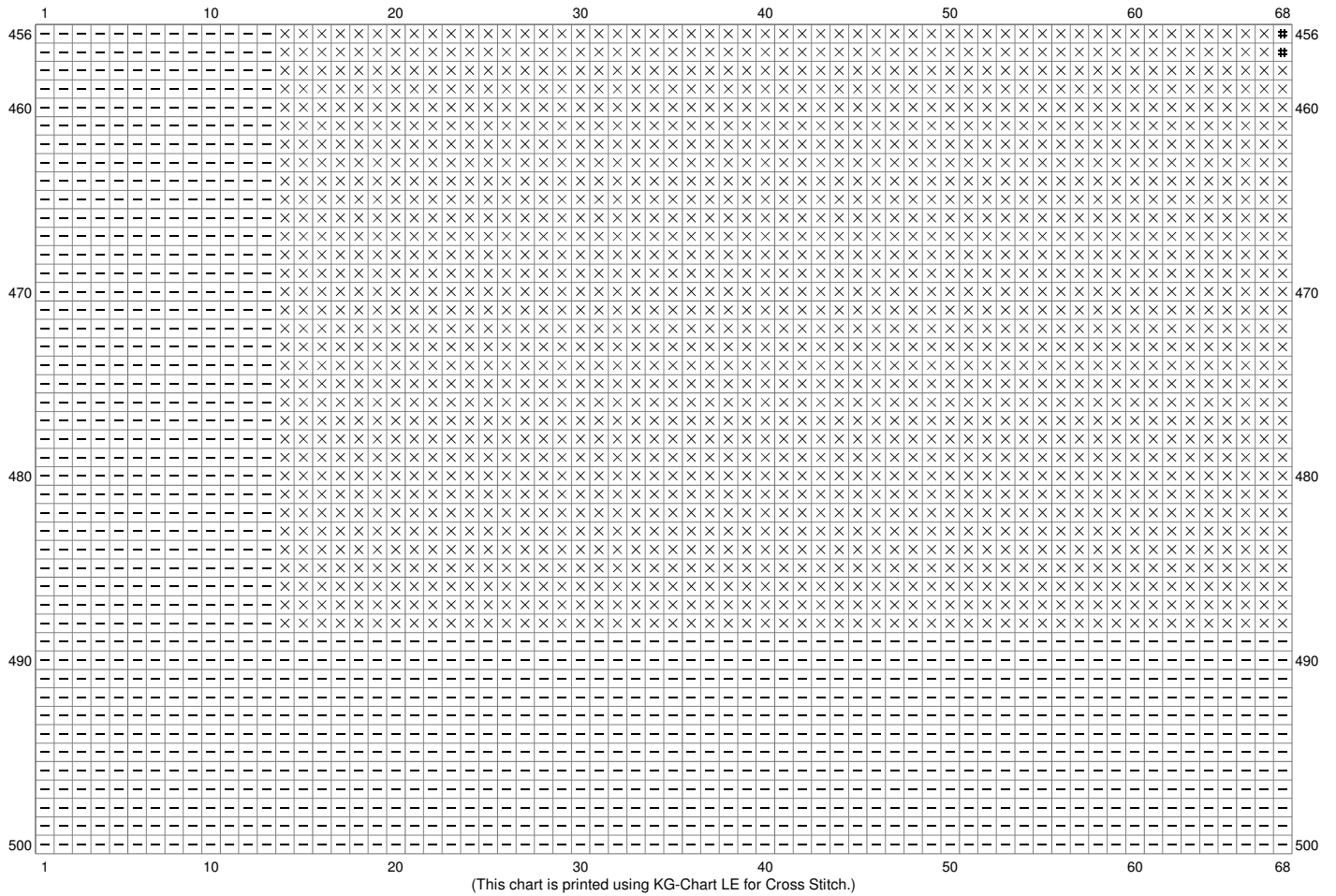


Untitled



(This chart is printed using KG-Chart LE for Cross Stitch.)

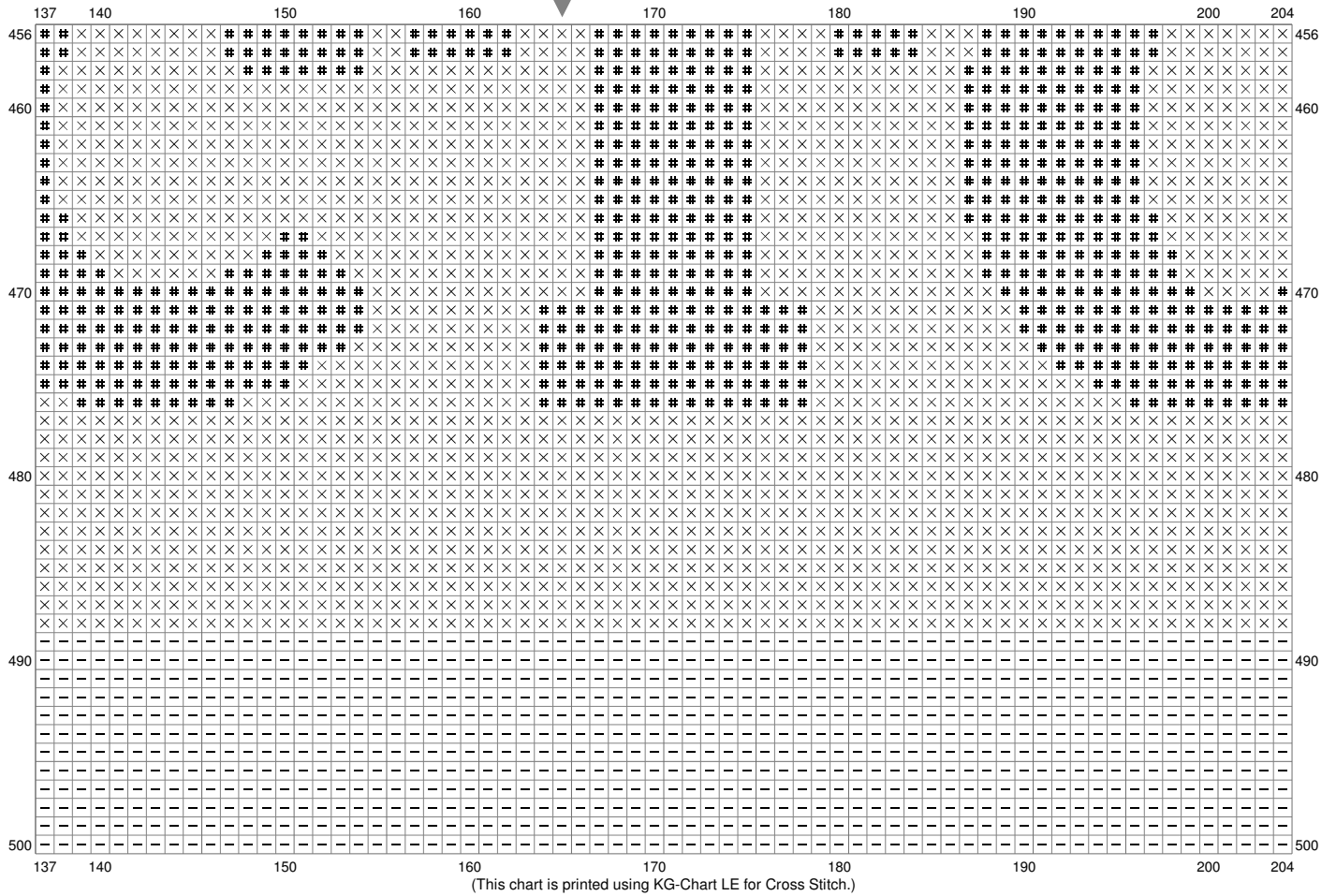
Untitled



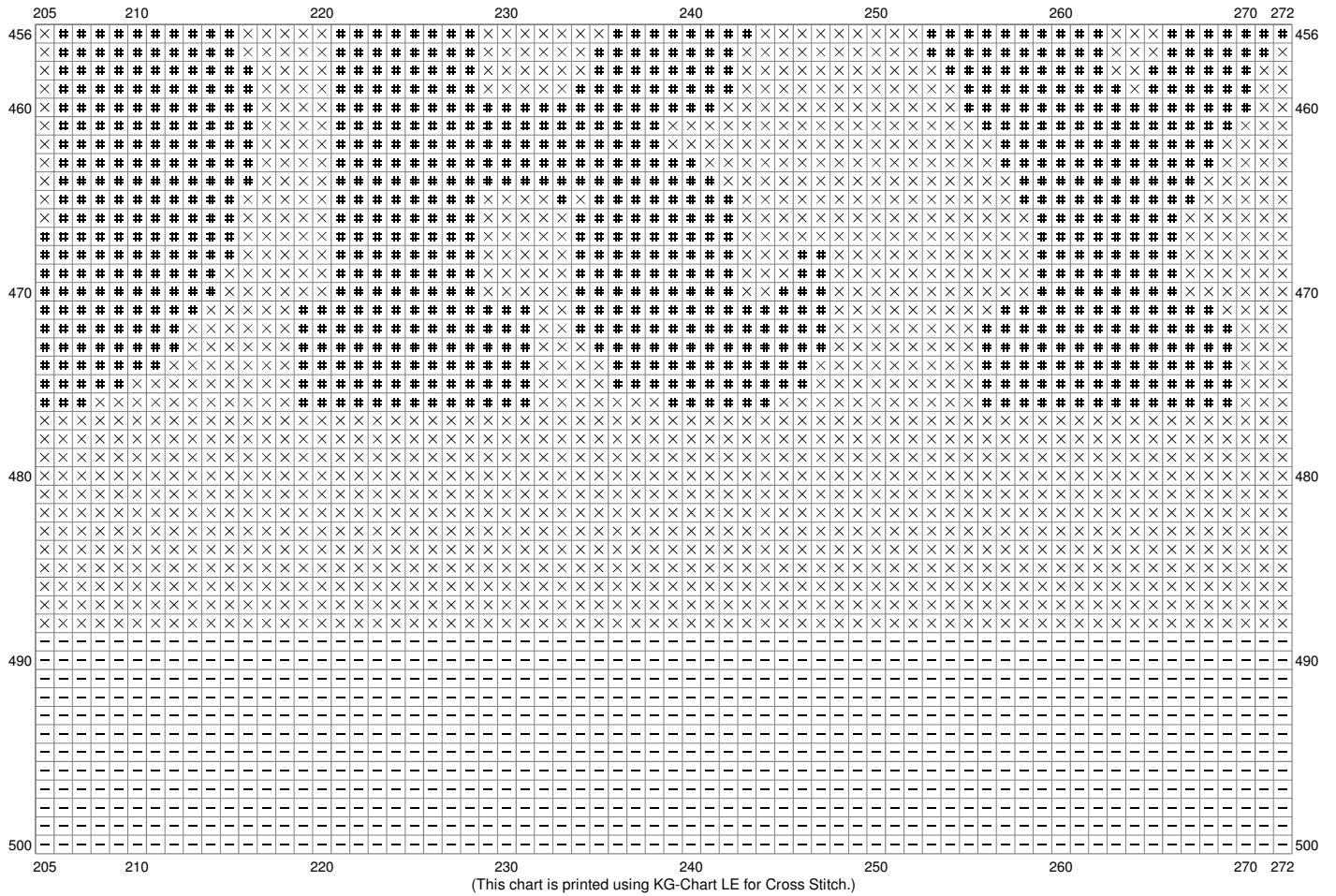
Untitled



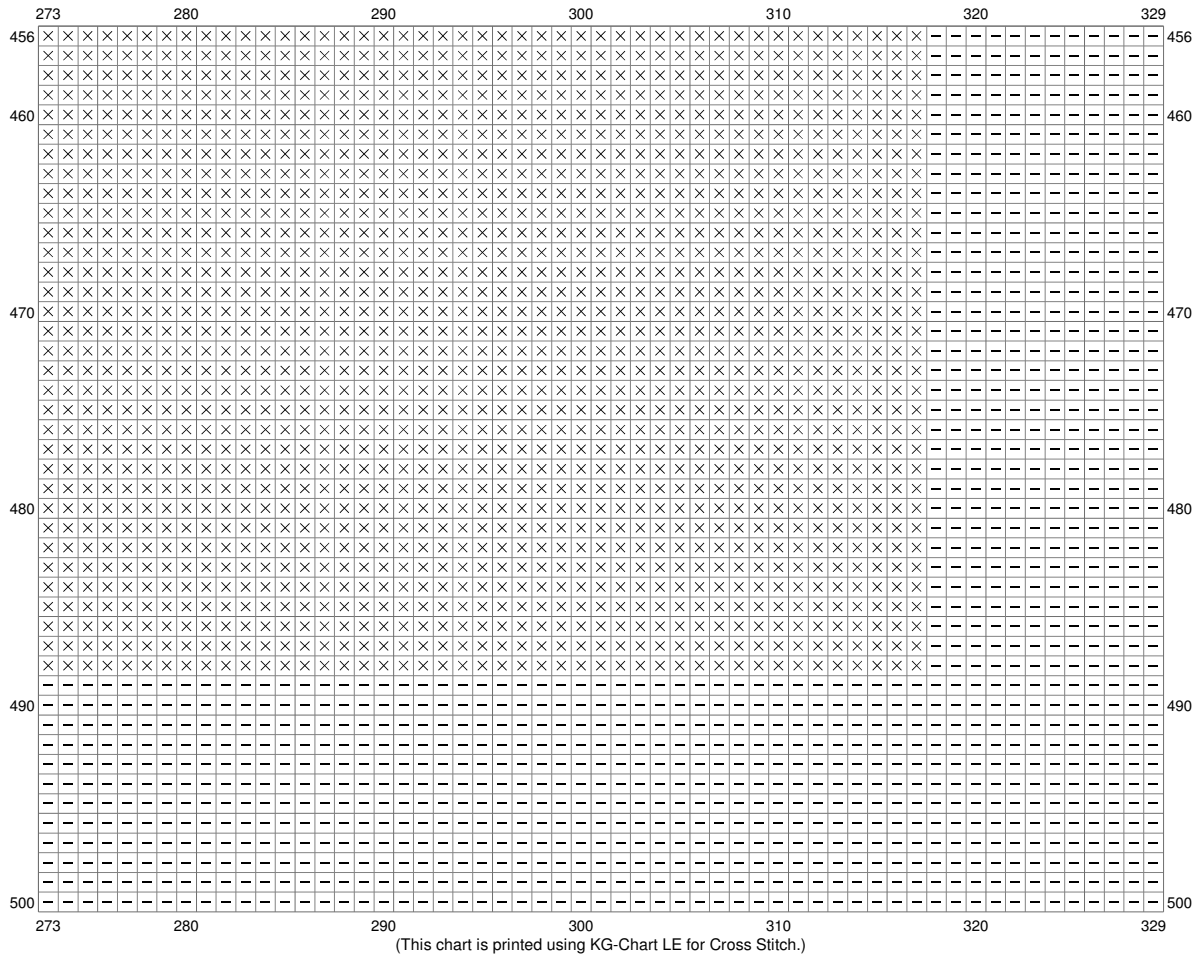
Untitled



Untitled



Untitled



Stitch Count: 329w x 500h

Finished Size: 119.38 cm x 181.42 cm (14 ct./inch)

Cloth: Aida

Cloth's Color: White

of colors: 7 Colors

Color Table (DMC)

Cross Stitch

+	500	(13699 ct)
E	3808	(26336 ct)
X	918	(37765 ct)
#	738	(21601 ct)
•	613	(8908 ct)
*	3768	(15030 ct)
-	3866	(41161 ct)