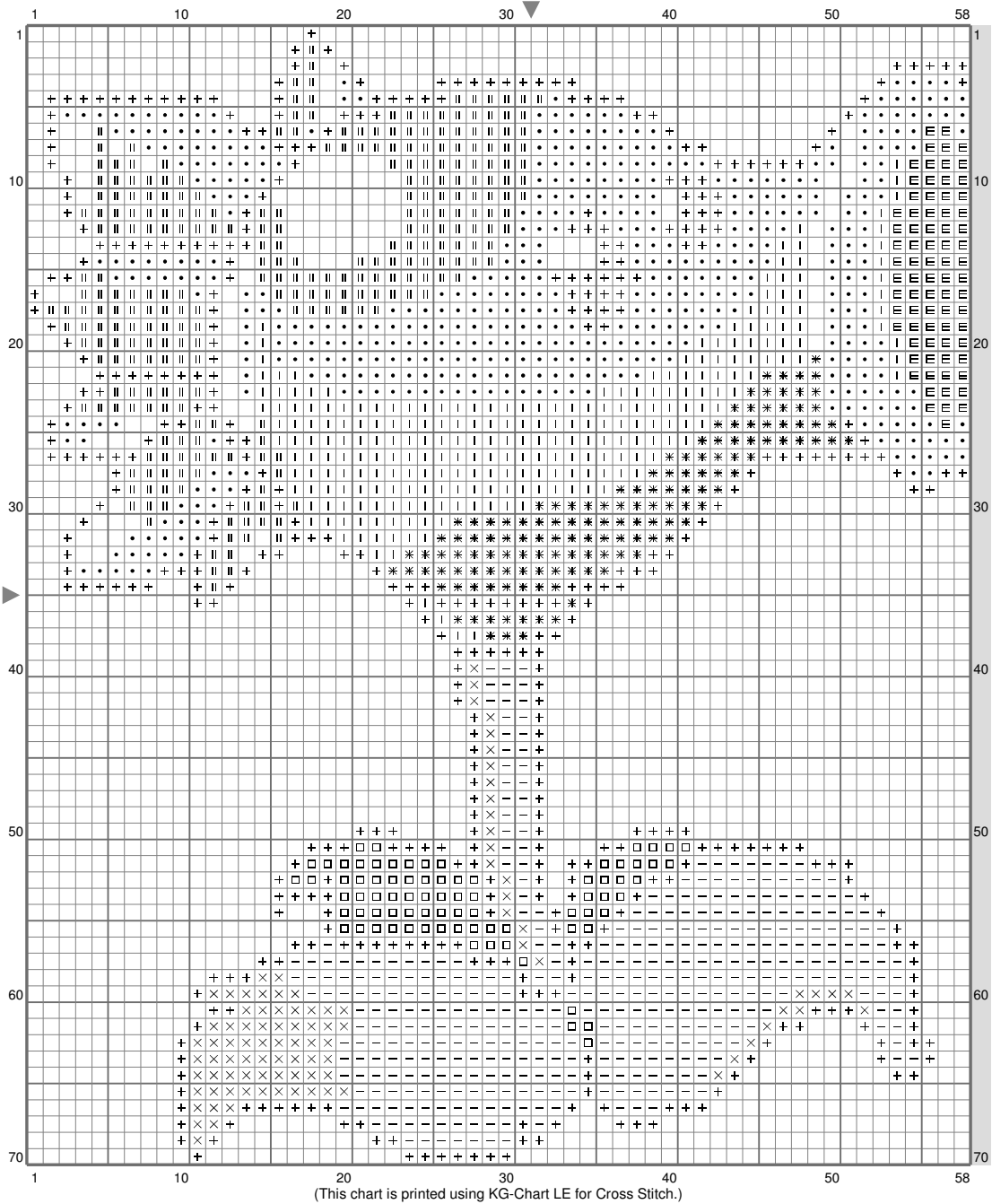
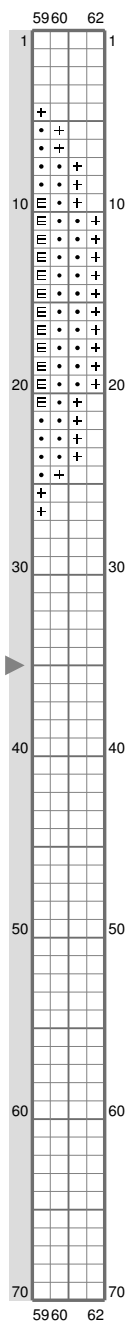


# Snow Pea



# Snow Pea



Stitch Count: 62w x 70h

Finished Size: 11.24 cm x 12.7 cm (28 ct./inch)

Cloth: Aida

Cloth's Color: White

# of colors: 9 Colors

## Color Table (DMC)

### **Cross Stitch**

+	310	(470 ct)
E	500	(88 ct)
□	319	(80 ct)
-	988	(394 ct)
X	704	(97 ct)
*	3844	(142 ct)
I	3845	(258 ct)
•	827	(513 ct)
II	3841	(282 ct)

(This chart is printed using KG-Chart LE for Cross Stitch.)