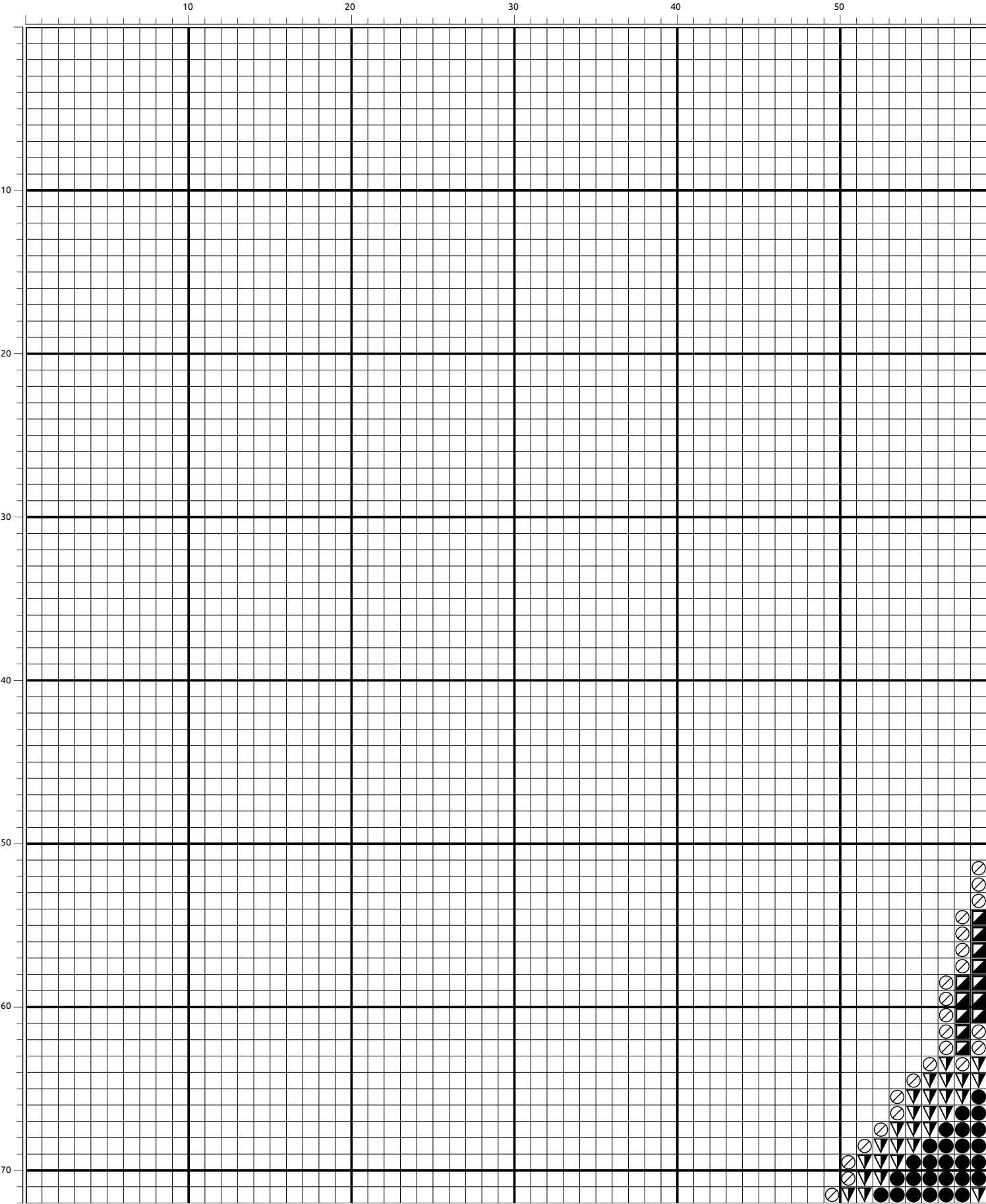
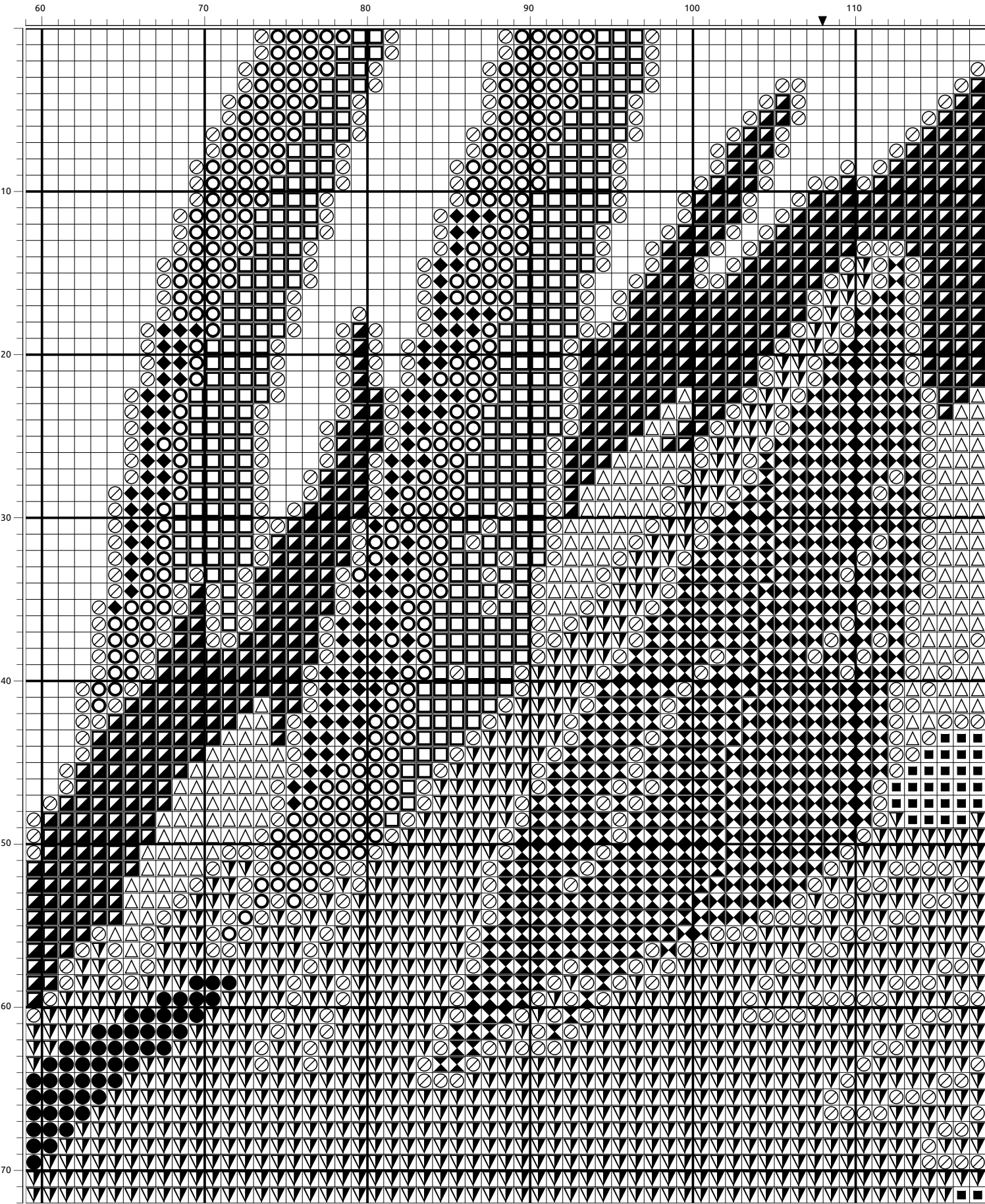
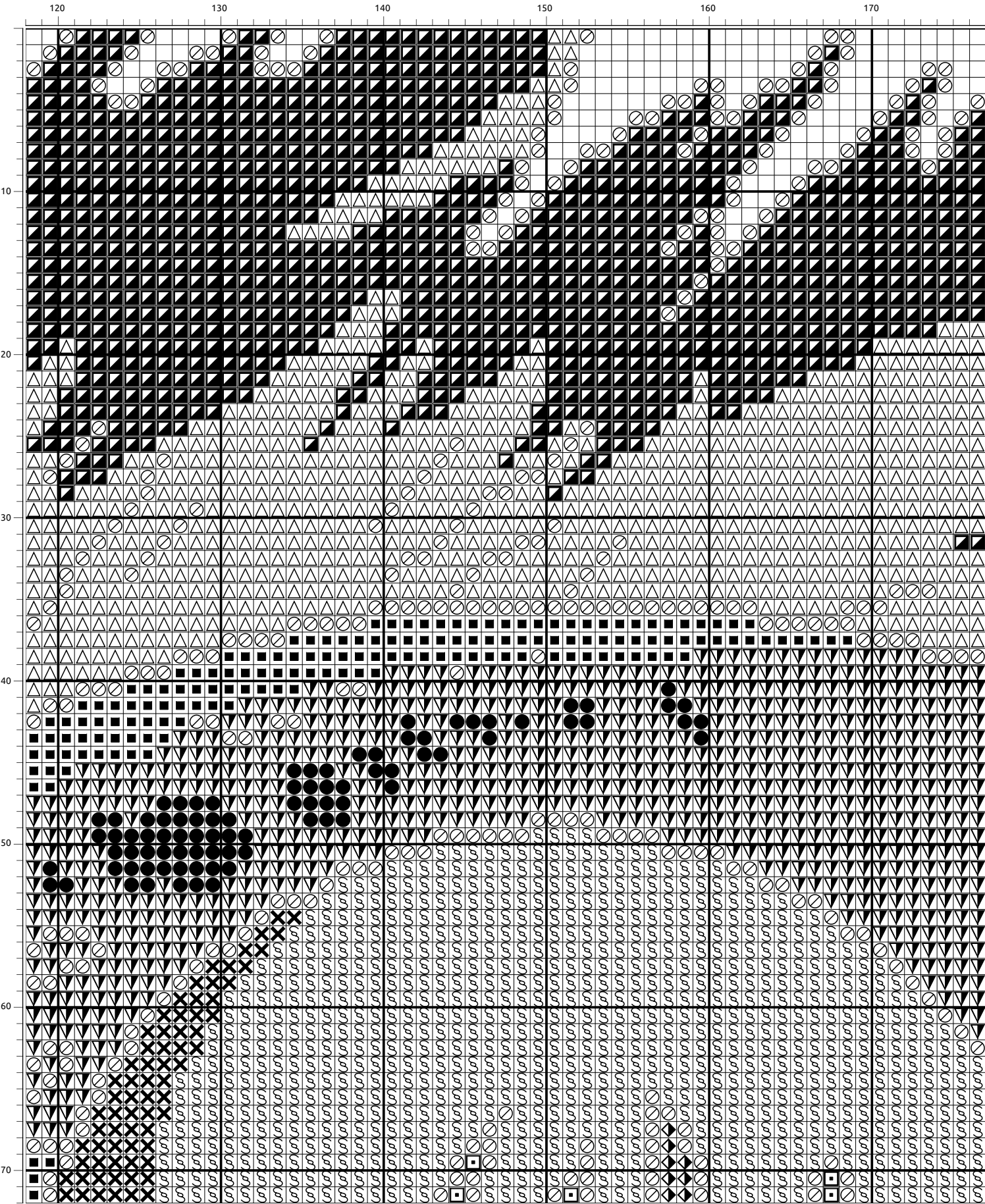
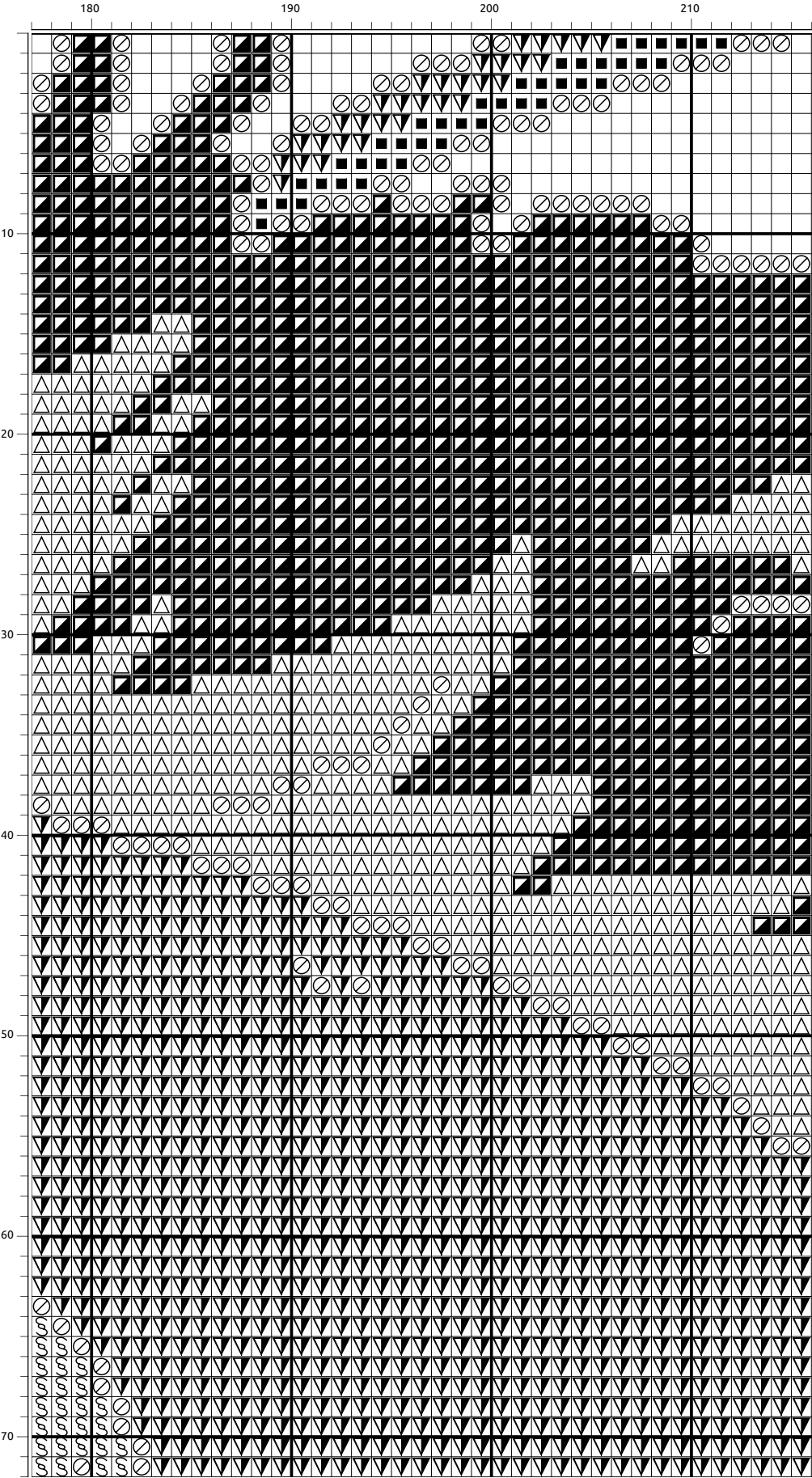


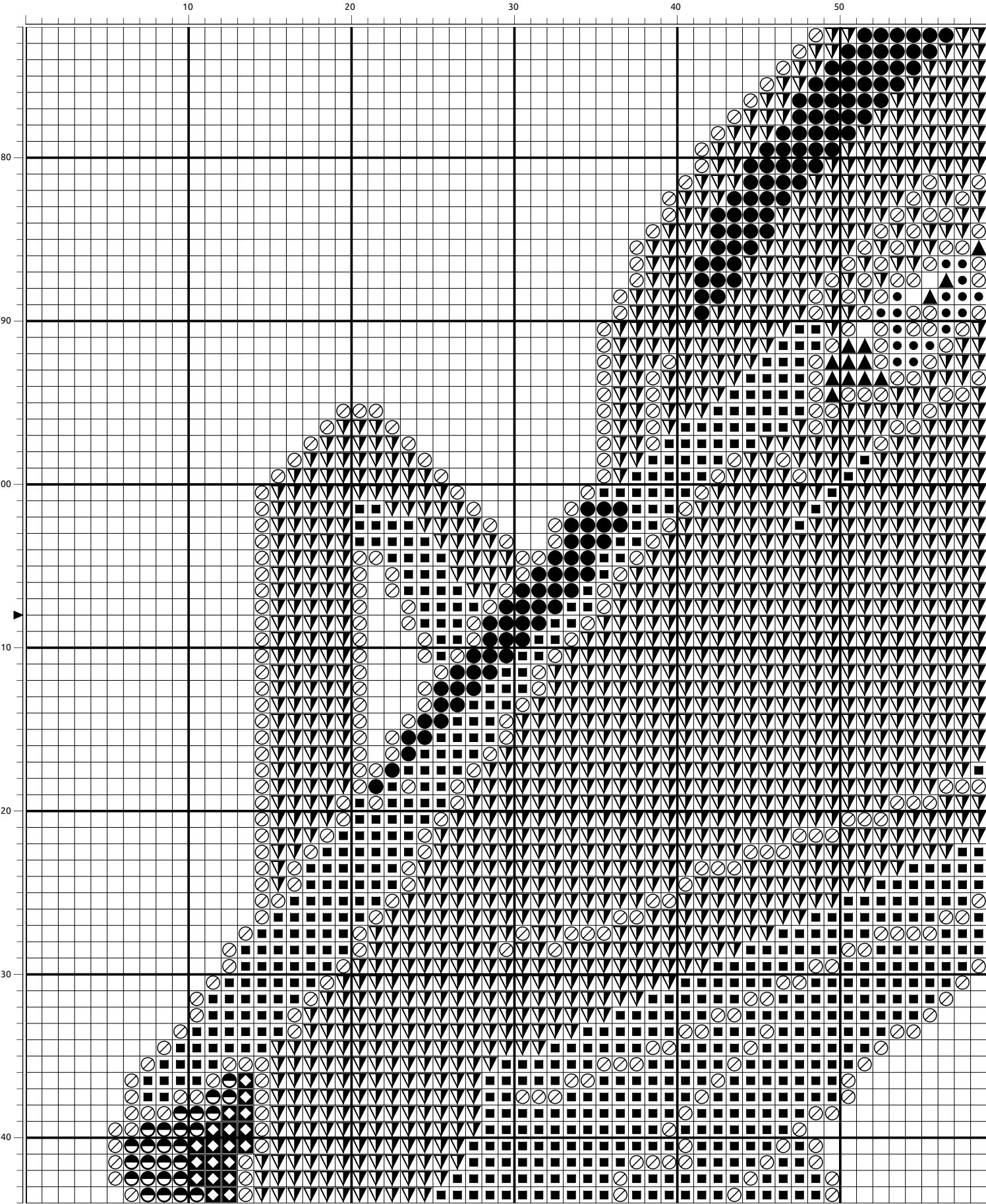
Created by RHStitch (C) 08/13/2013 Pattern Size: 216 x 216 Flosses from the DMC range.

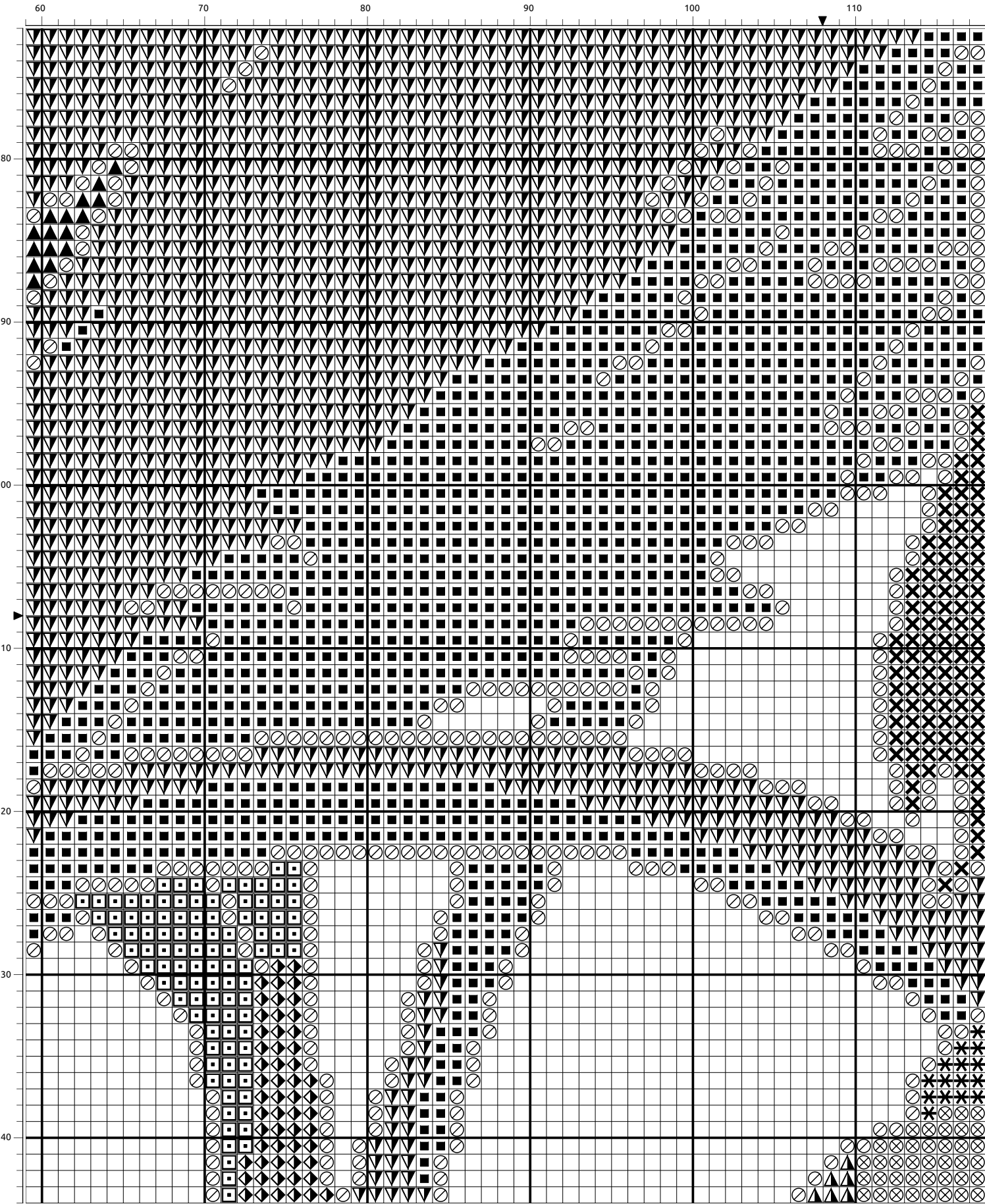


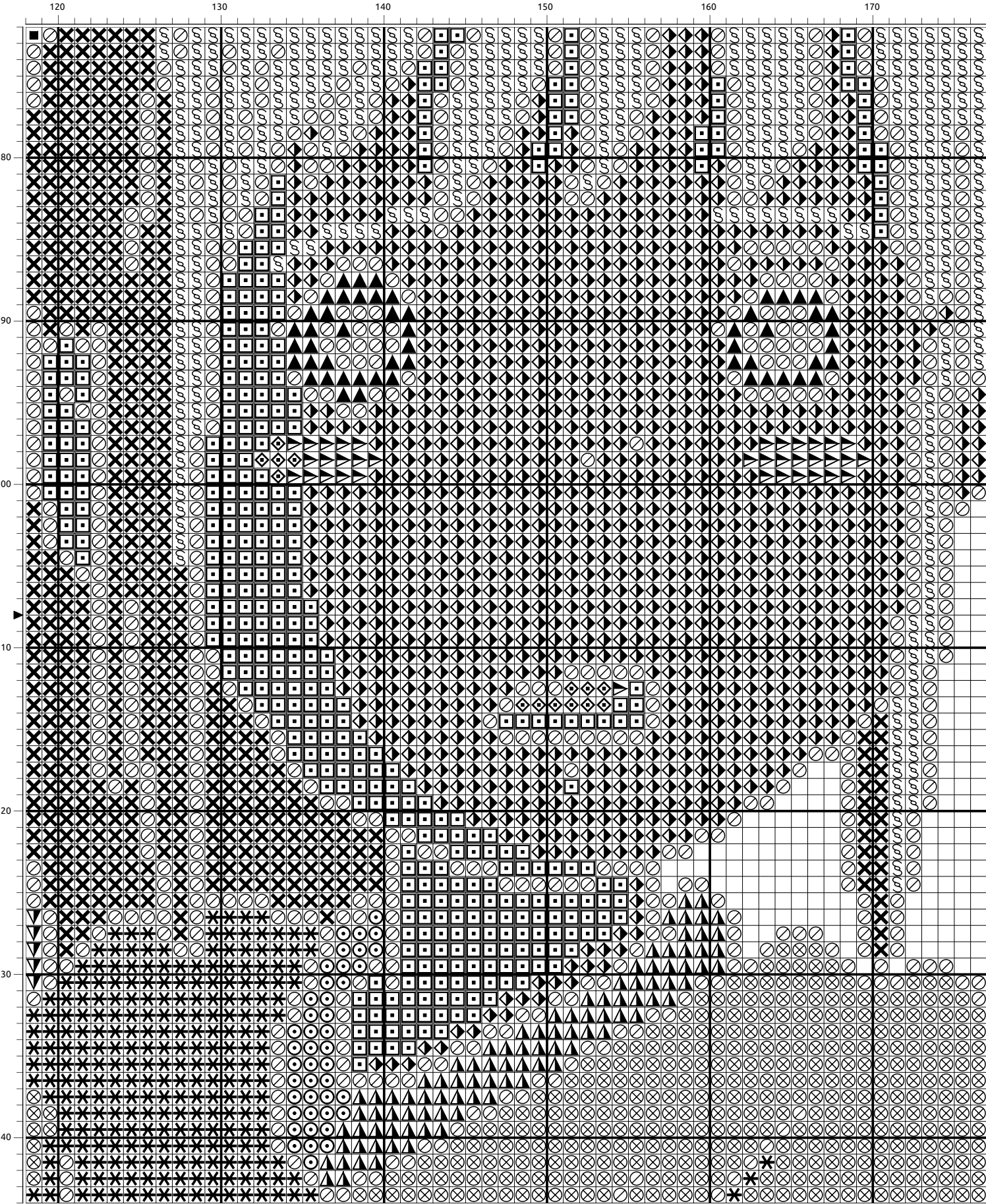


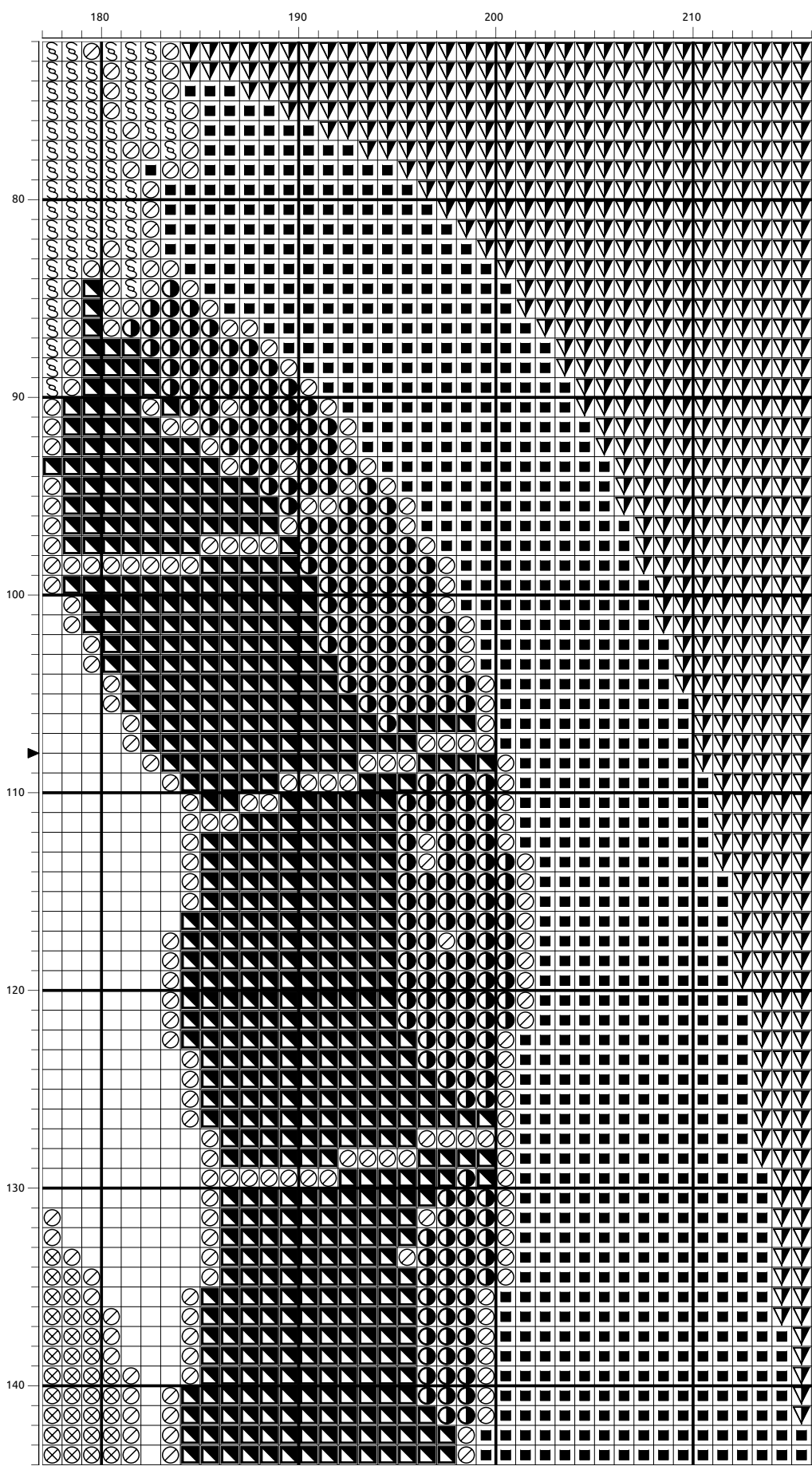


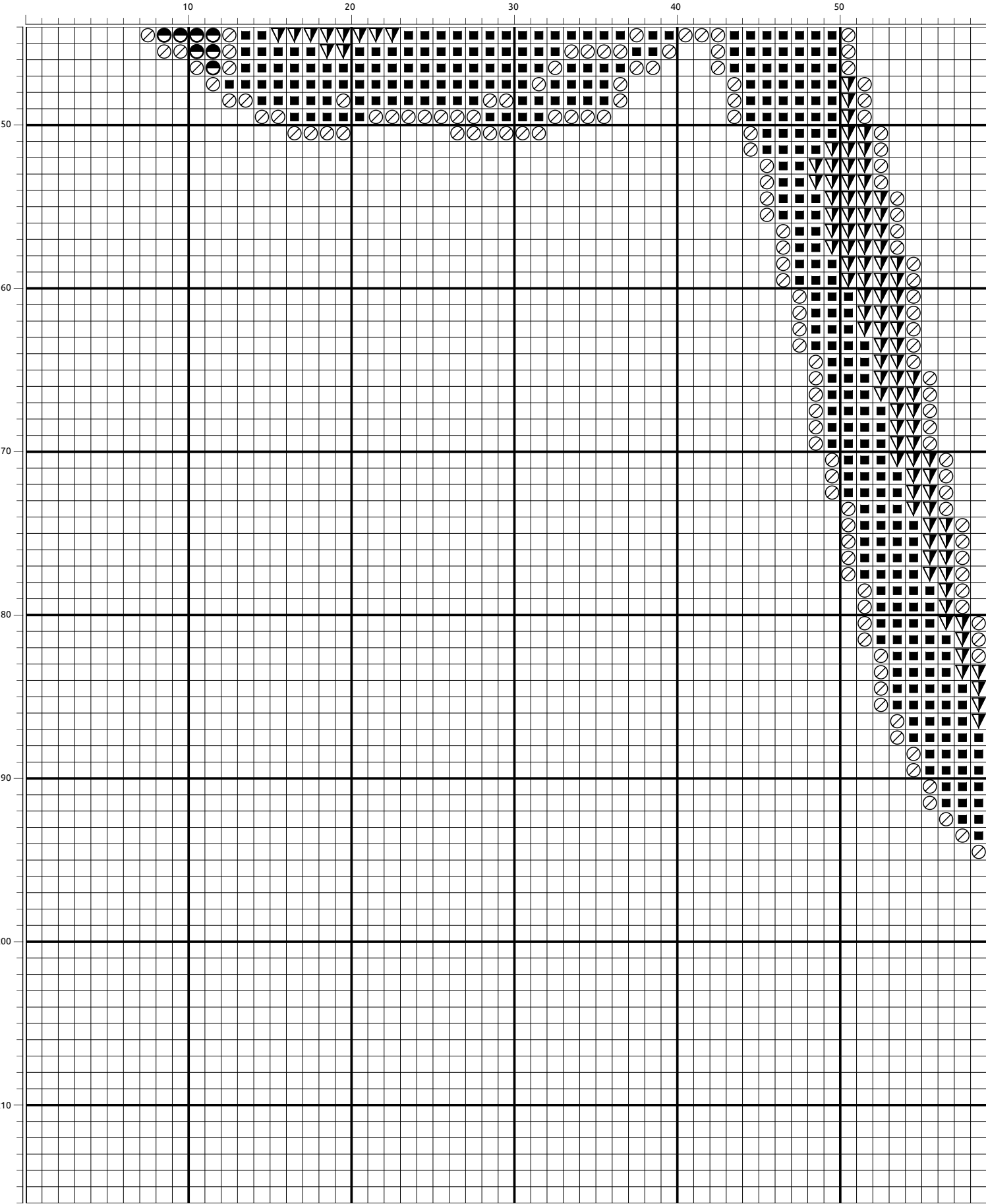


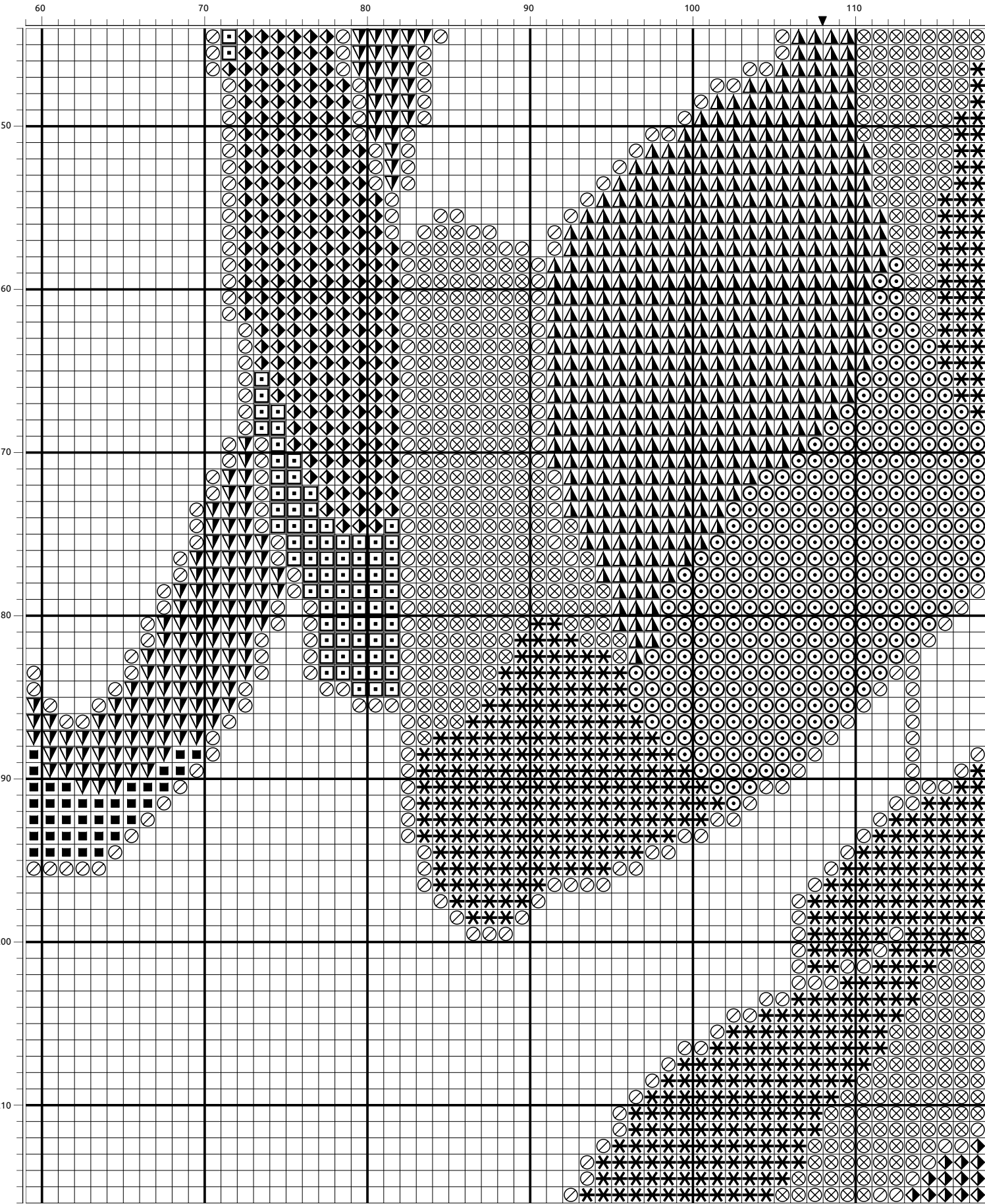


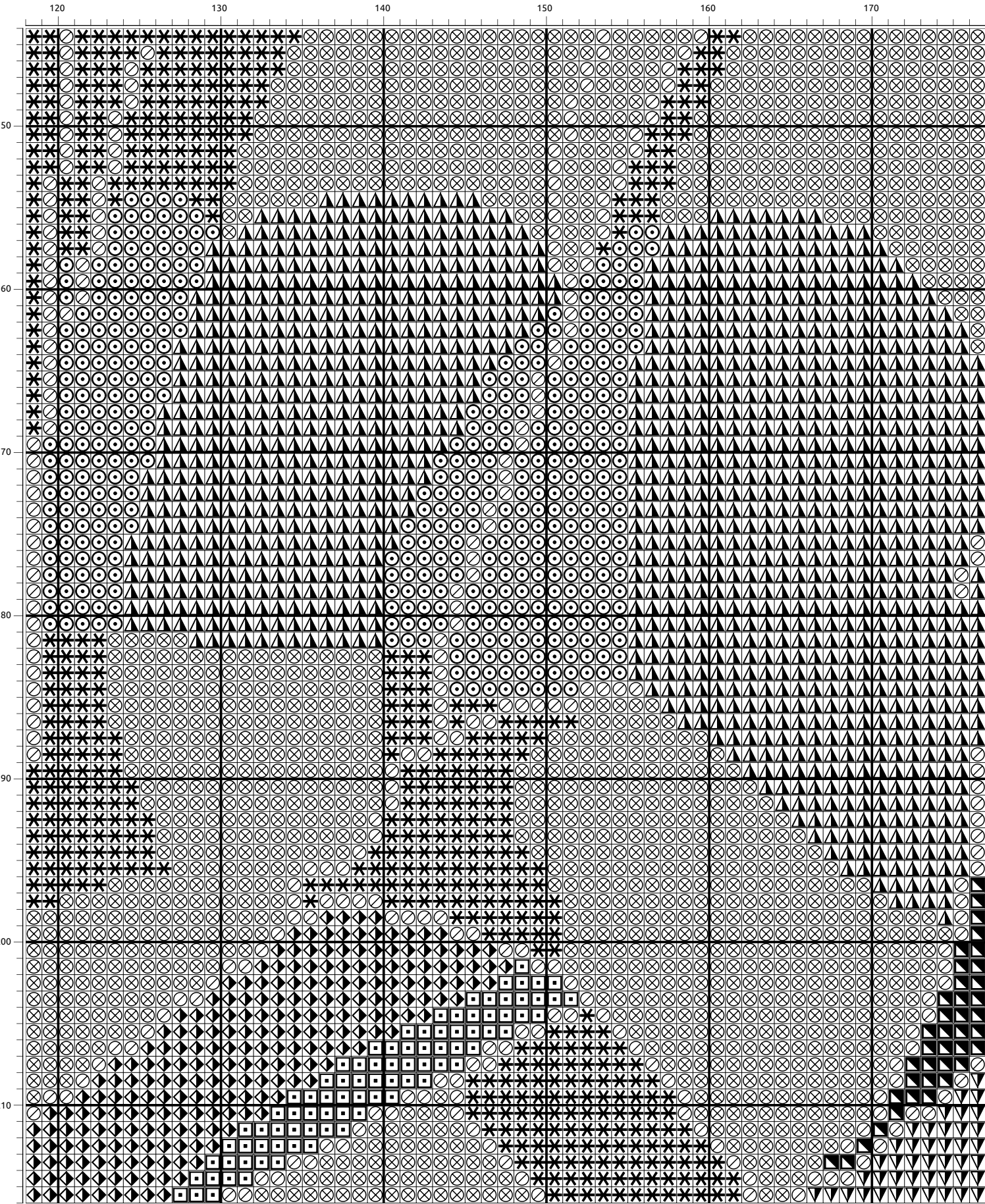


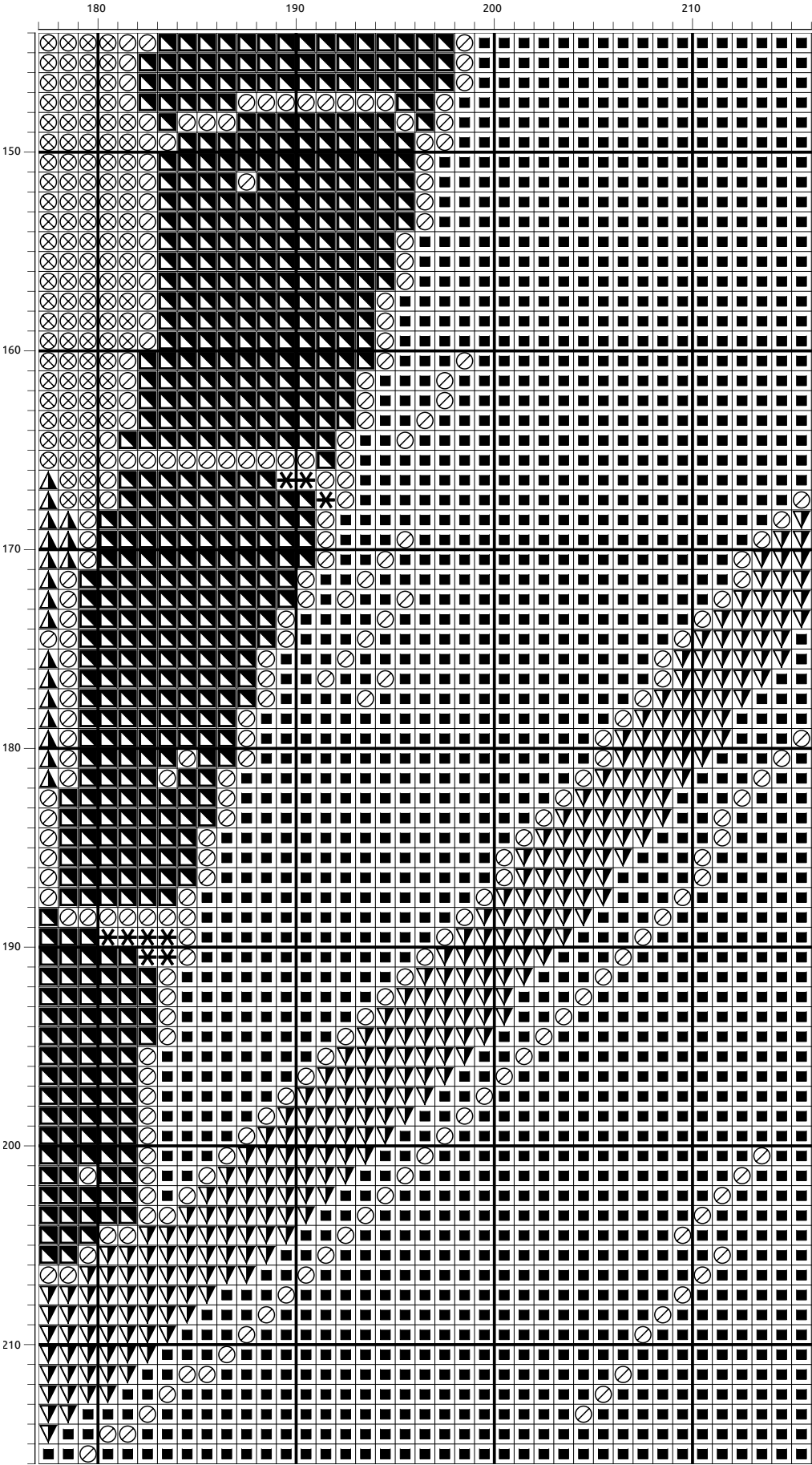












DMC Flosses

Symbol	Name	Strands	Description	Stitches	Length(m)	Skeins (8m)
✕	151	2 / 2	Dusty Rose Vry Lt	293	3.99	1 (0.08)
▽	159	2 / 2	Blue Gray Light	6681	91.04	2 (1.9)
■	161	2 / 2	Blue Gray	4812	65.57	2 (1.37)
●	162	2 / 2	Blue Ultra Very Light	293	3.99	1 (0.08)
⊗	168	2 / 2	Pewter Very Light	2312	31.51	1 (0.66)
◇	223	2 / 2	Shell Pink Light	14	0.19	1 (0)
⊖	310	2 / 2	Black	3737	50.92	2 (1.06)
◼	317	2 / 2	Pewter Gray	1156	15.75	1 (0.33)
◐	340	2 / 2	Blue Violet Medium	33	0.45	1 (0.01)
●	367	2 / 2	Pistachio Green Dk	18	0.25	1 (0.01)
▲	368	2 / 2	Pistachio Green Lt	1872	25.51	1 (0.53)
✱	413	2 / 2	Pewter Gray Dark	1316	17.93	1 (0.37)
△	500	2 / 2	Blue Green Vy Dk	1502	20.47	1 (0.43)
◼	503	2 / 2	Blue Green Med	2442	33.28	1 (0.69)
◻	610	2 / 2	Drab Brown Dk	331	4.51	1 (0.09)
◻	640	2 / 2	Beige Gray Vy Dk	683	9.31	1 (0.19)
○	642	2 / 2	Beige Gray Dark	303	4.13	1 (0.09)
◆	644	2 / 2	Beige Gray Med	129	1.76	1 (0.04)
◐	648	2 / 2	Beaver Gray Lt	247	3.37	1 (0.07)
§	839	2 / 2	Beige Brown Dk	1319	17.97	1 (0.37)
◊	841	2 / 2	Beige Brown Lt	1821	24.81	1 (0.52)
✕	3031	2 / 2	Mocha Brown Vy Dk	677	9.23	1 (0.19)
◼	3041	2 / 2	Antique Violet Medium	19	0.26	1 (0.01)
⊙	3051	2 / 2	Green Gray Dk	841	11.46	1 (0.24)
✕	3740	2 / 2	Antique Violet Dark	276	3.76	1 (0.08)
▶	3859	2 / 2	Rosewood Light	36	0.49	1 (0.01)
▲	Blanc	2 / 2	White	82	1.12	1 (0.02)