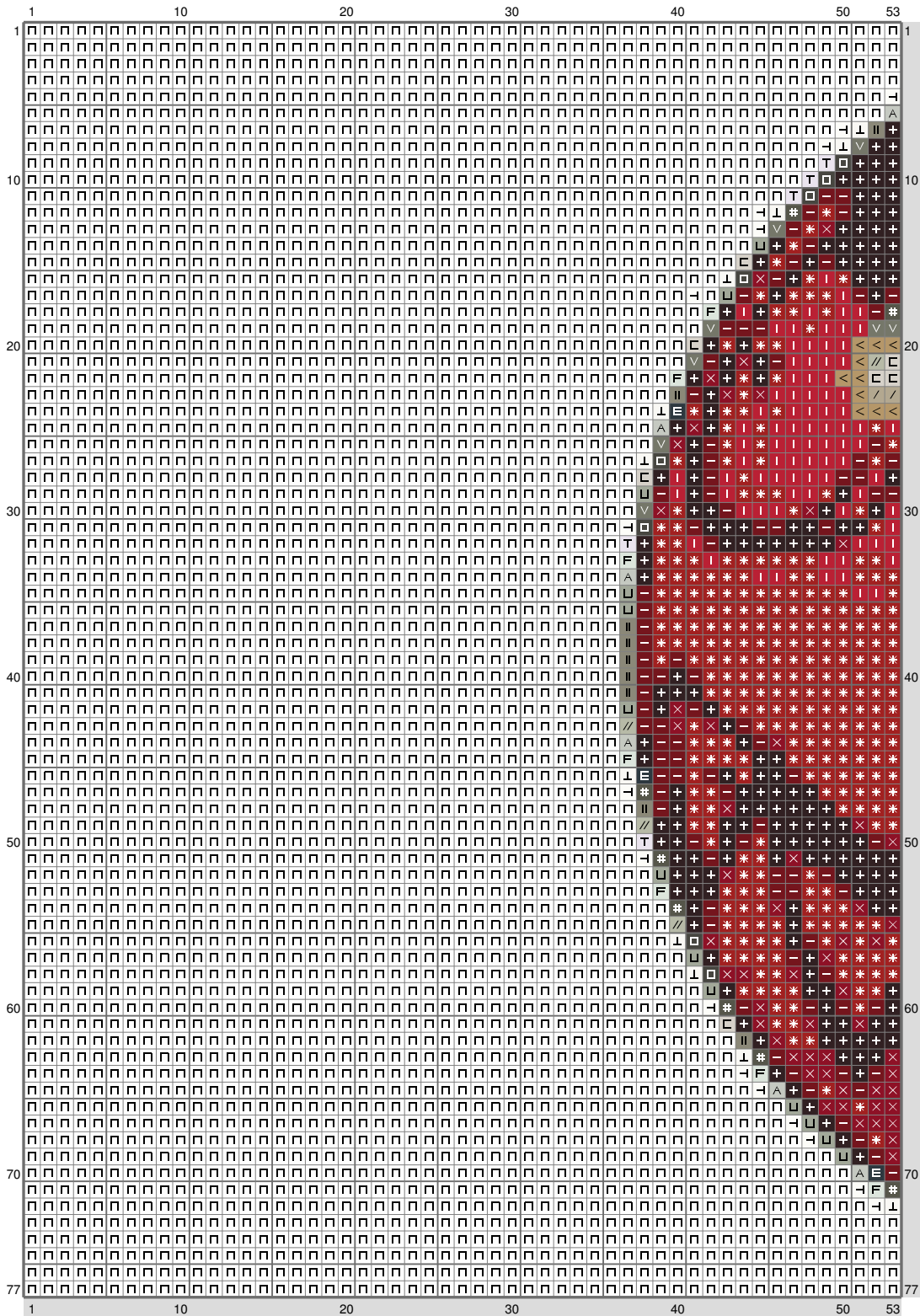
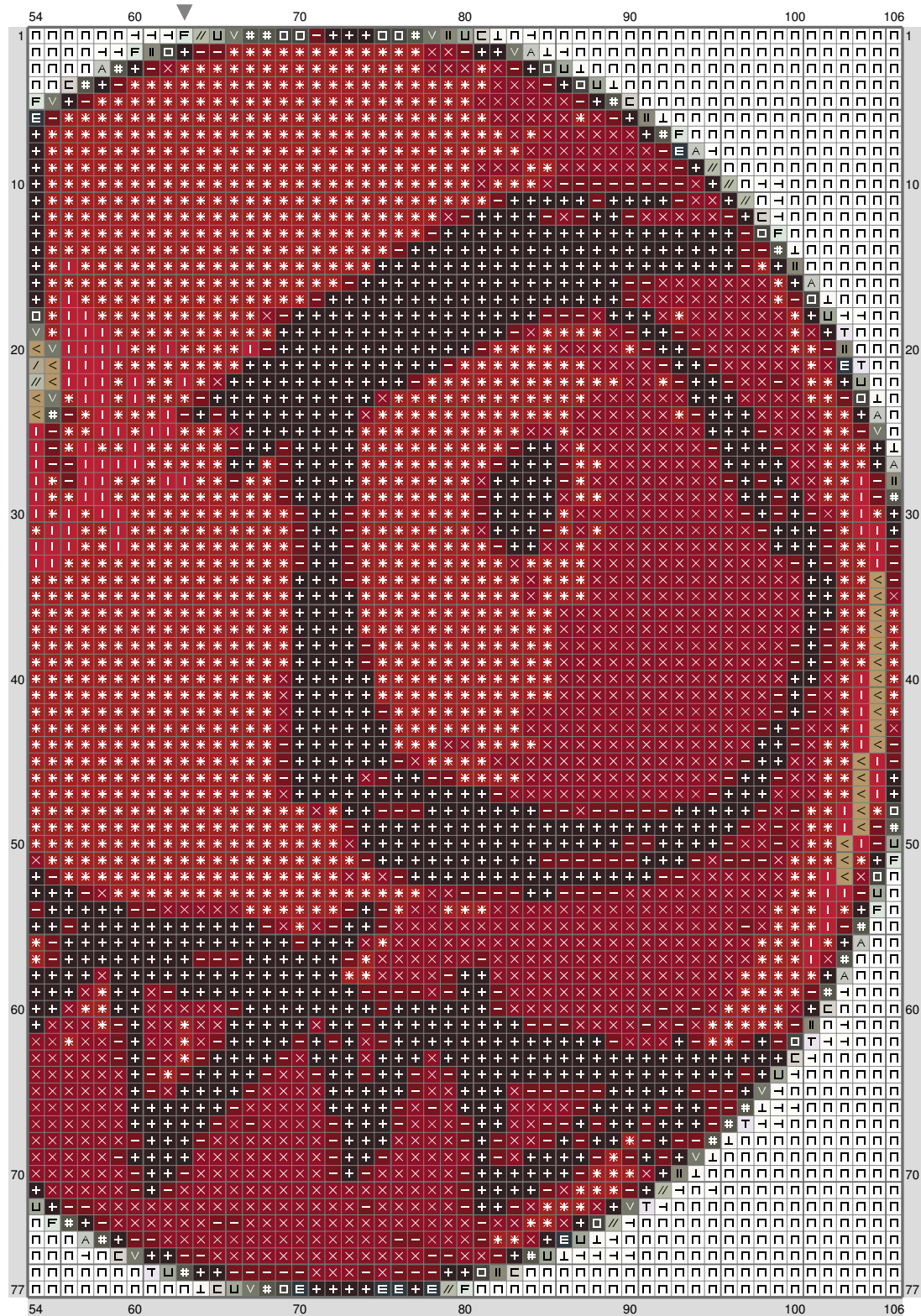


Untitled



Untitled



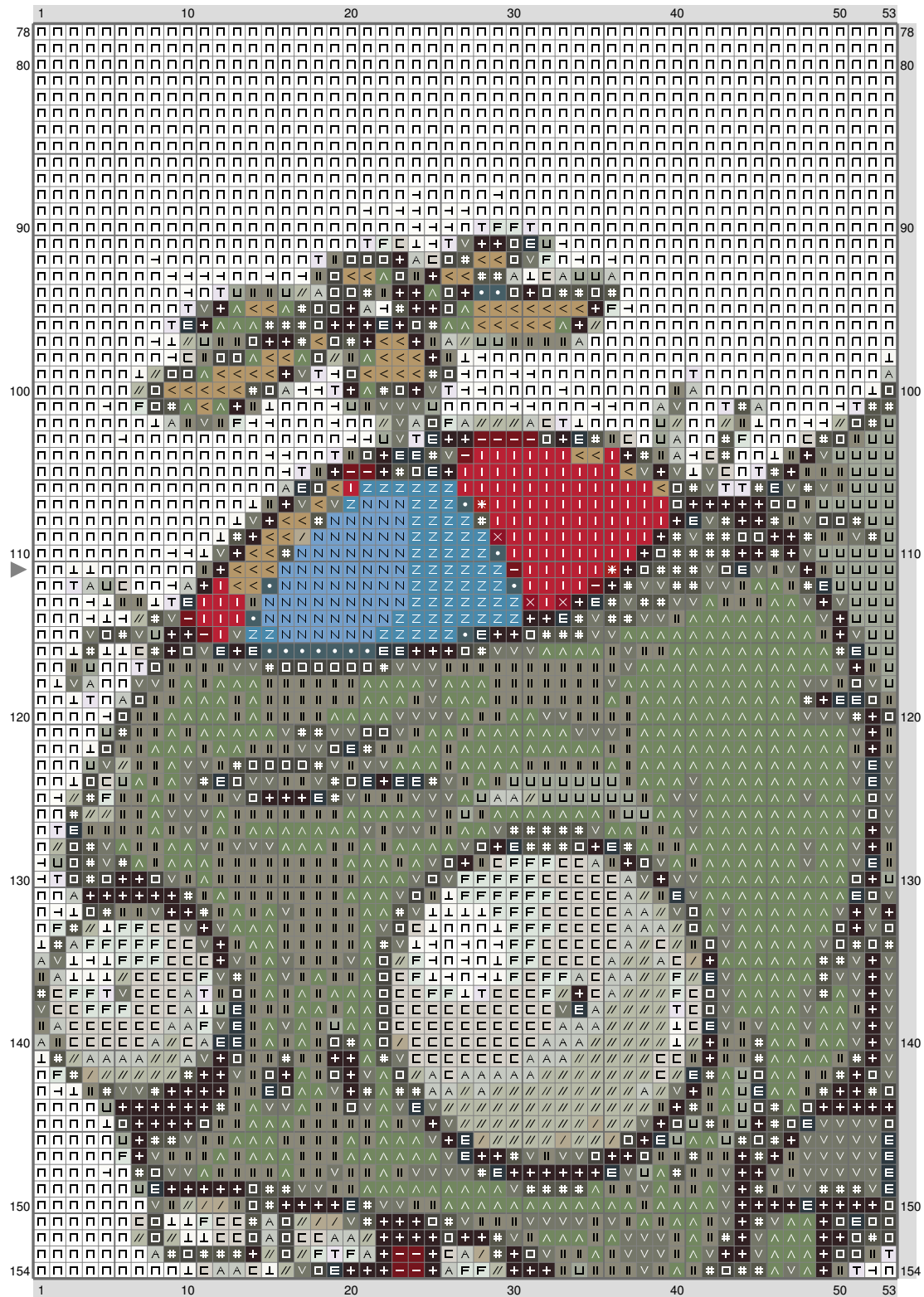
(This chart is printed using KG-Chart LE for Cross Stitch.)

Untitled

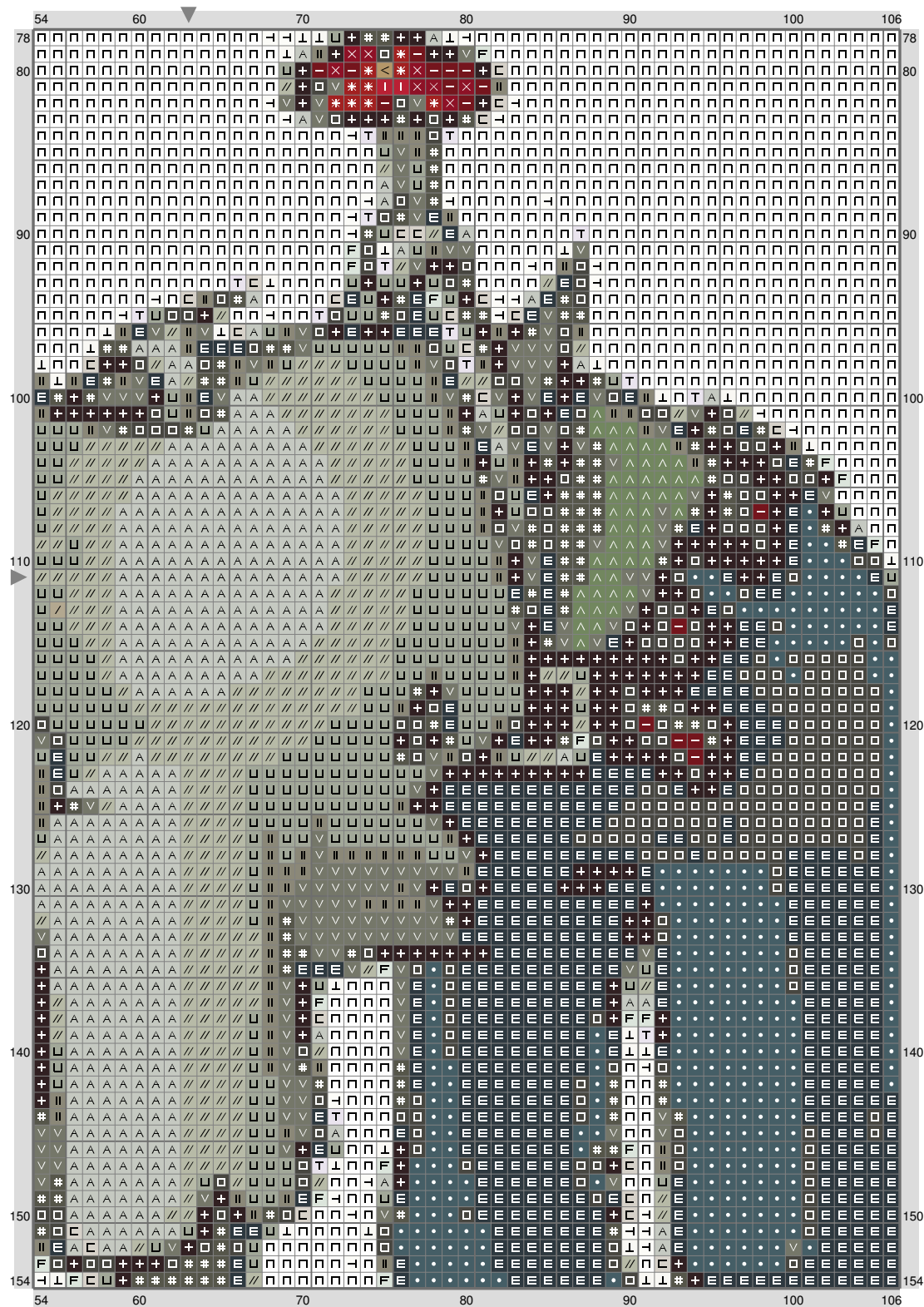
[illegible]

(This chart is printed using KG-Chart LE for Cross Stitch.)

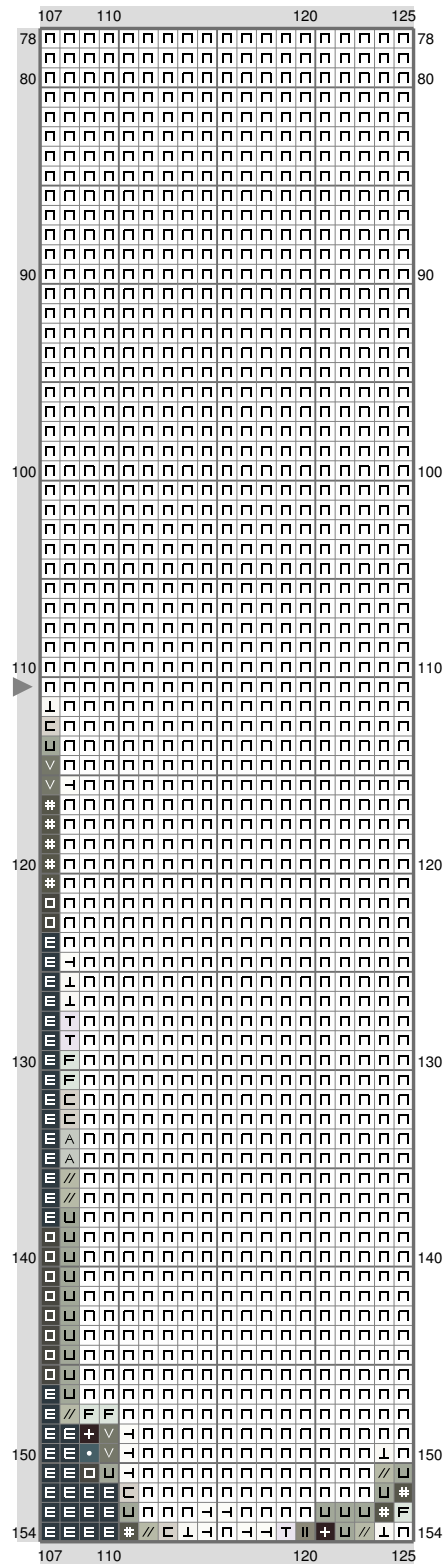
Untitled



Untitled

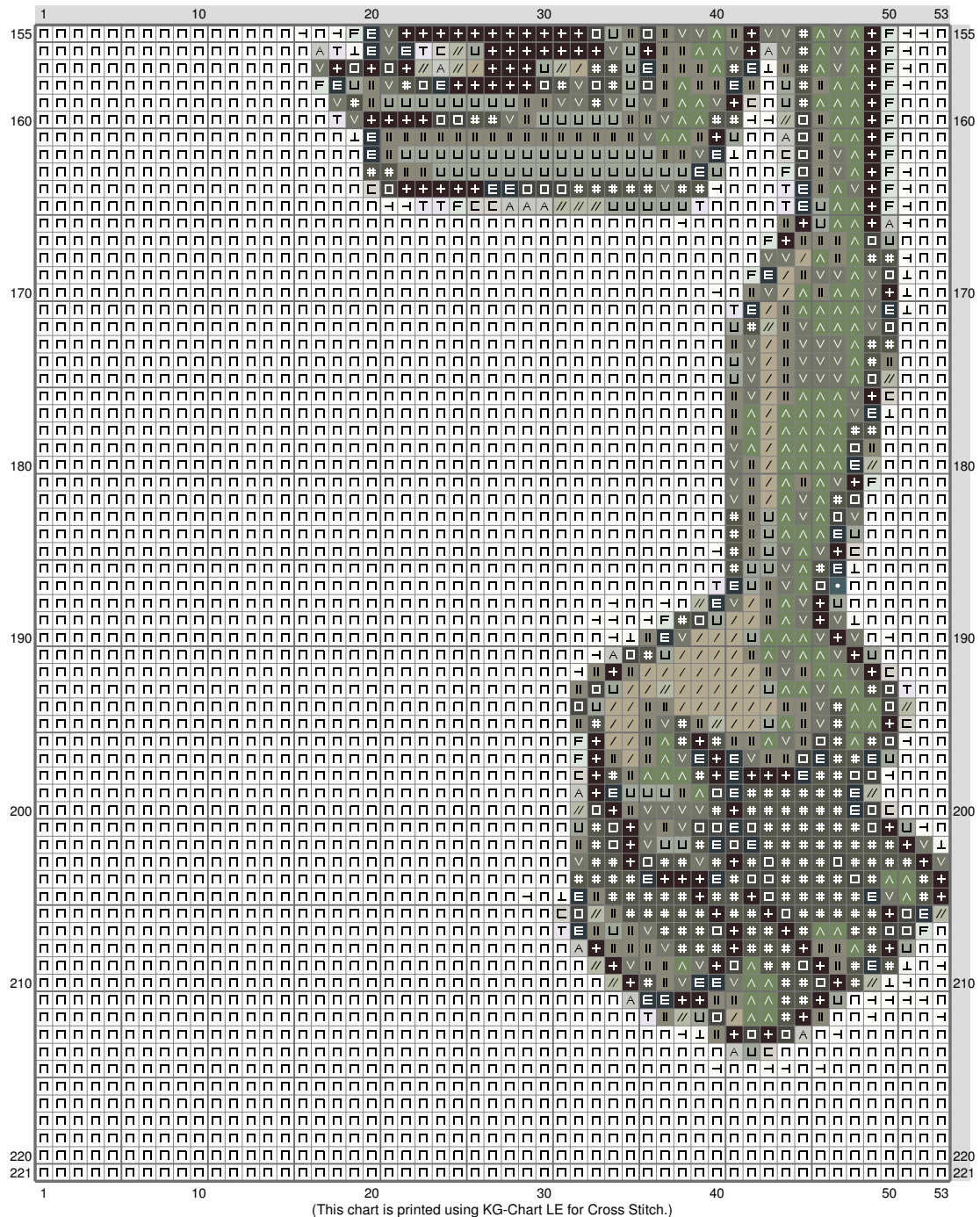


Untitled

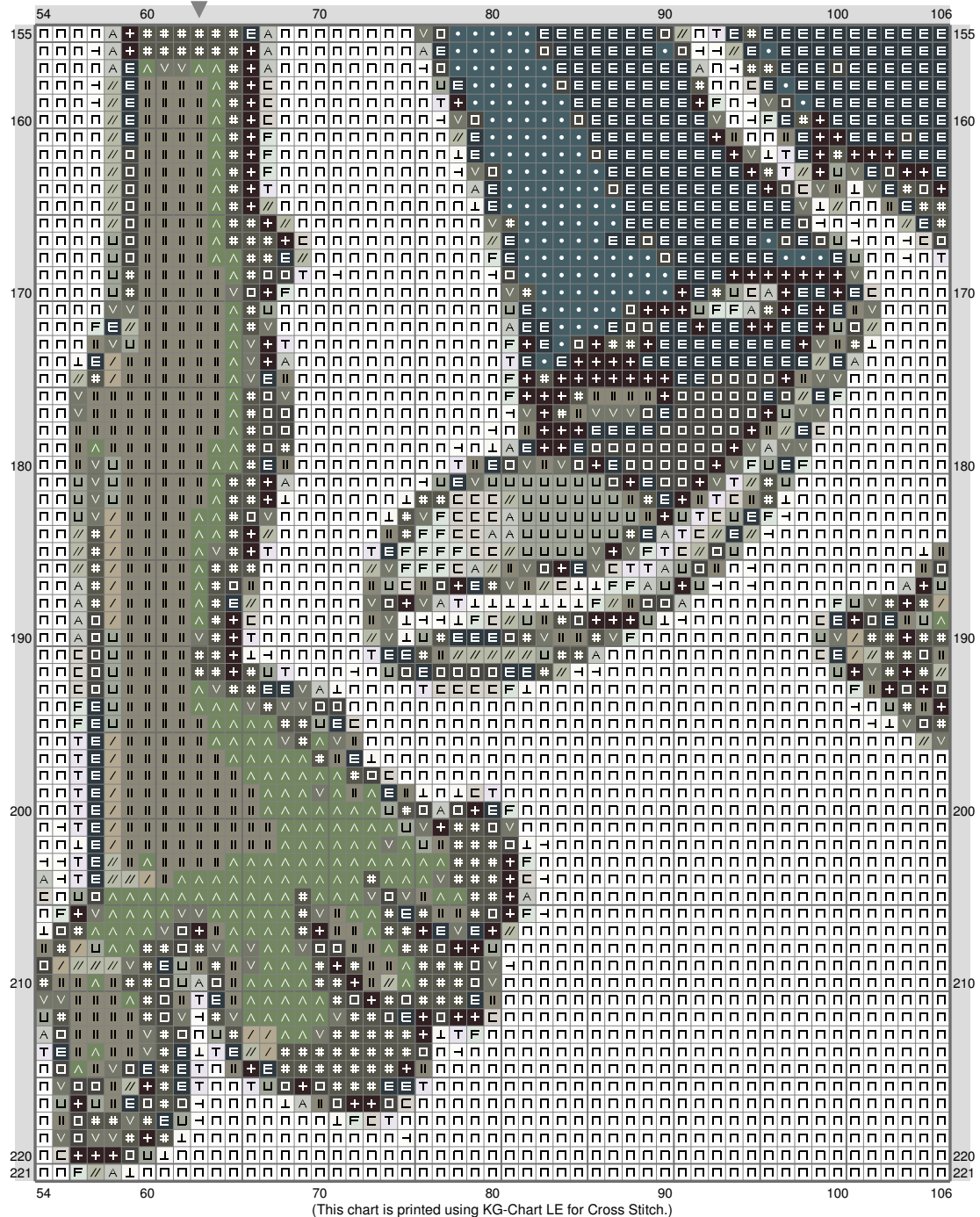


(This chart is printed using KG-Chart LE for Cross Stitch.)

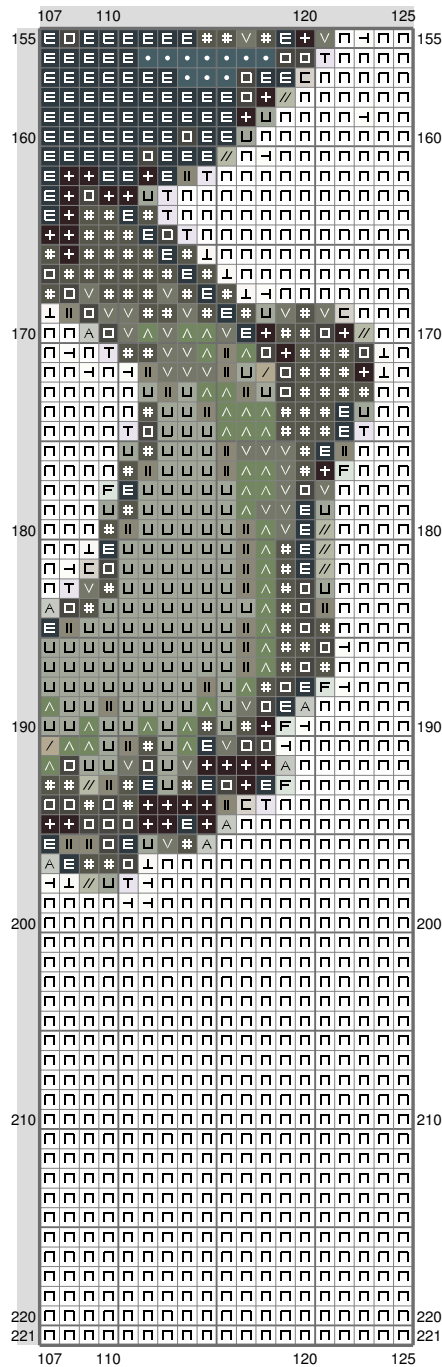
Untitled



Untitled



Untitled



Stitch Count: 125w x 221h
 Finished Size: 45.35 cm x 80.19 cm (14 ct./inch)
 Cloth: Aida
 Cloth's Color: White
 # of colors: 25 Colors

Color Table (DMC)

Cross Stitch

	939	(1792 ct)
	500	(1096 ct)
	3021	(758 ct)
	815	(461 ct)
	816	(962 ct)
	3777	(1559 ct)
	321	(260 ct)
	3362	(807 ct)
	924	(466 ct)
	3787	(724 ct)
	3363	(926 ct)
	640	(988 ct)
	370	(94 ct)
	3022	(773 ct)
	3032	(100 ct)
	3760	(58 ct)
	334	(60 ct)
	523	(598 ct)
	3023	(612 ct)
	3033	(250 ct)
	3072	(181 ct)
	762	(130 ct)
	3865	(193 ct)
	BLANC	(292 ct)
	B5200	(13485 ct)

(This chart is printed using KG-Chart LE for Cross Stitch.)