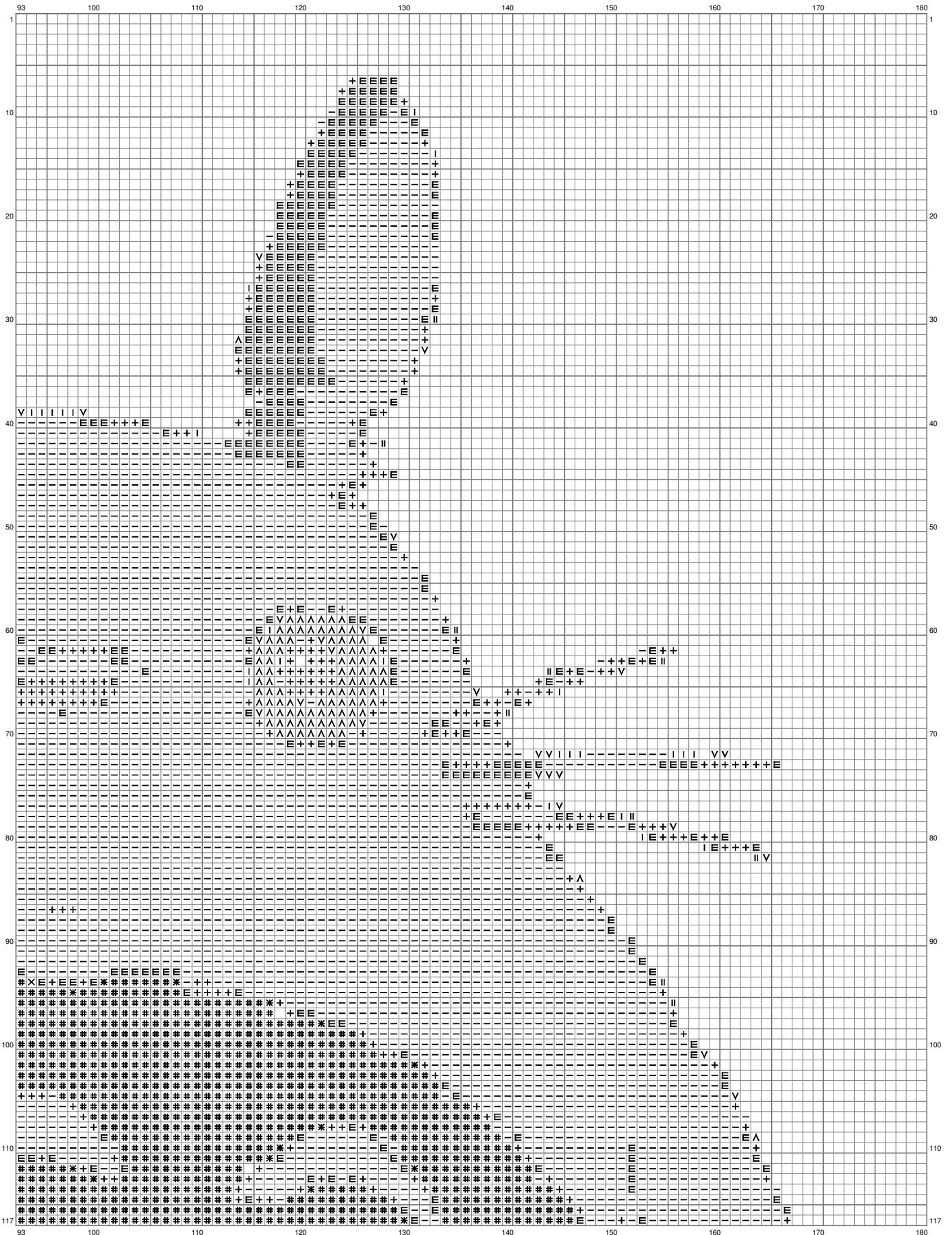


Totoro



(This chart is printed using KG-Chart LE for Cross Stitch.)

Totoro



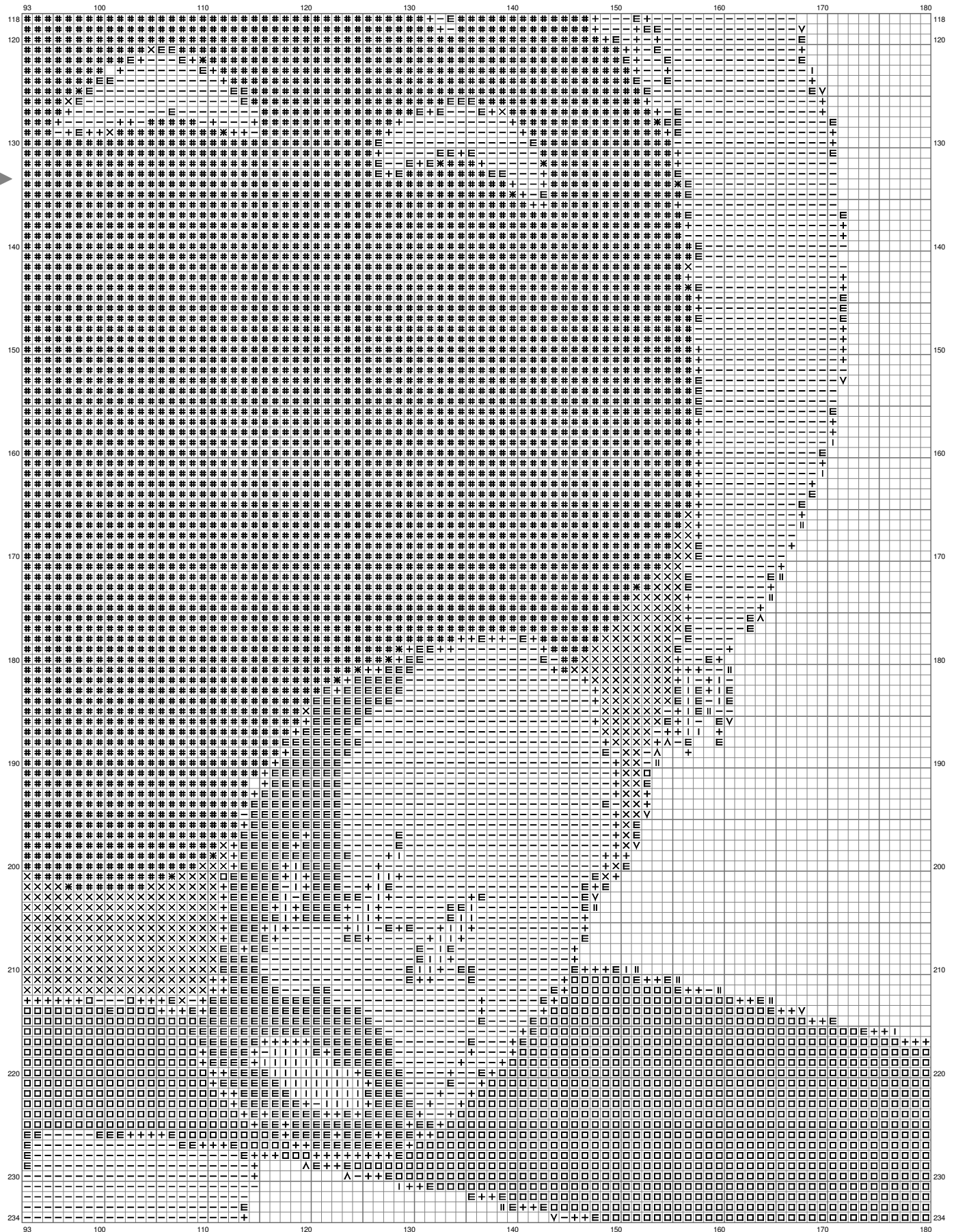
(This chart is printed using KG-Chart LE for Cross Stitch.)

Totoro



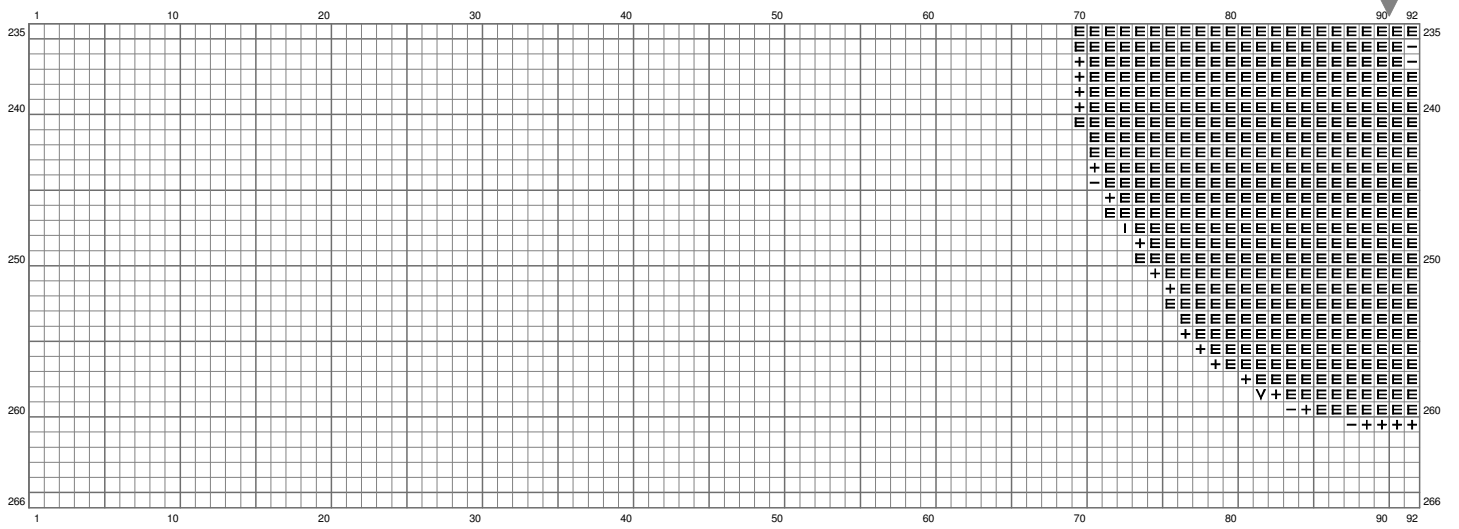
(This chart is printed using KG-Chart LE for Cross Stitch.)

Totoro

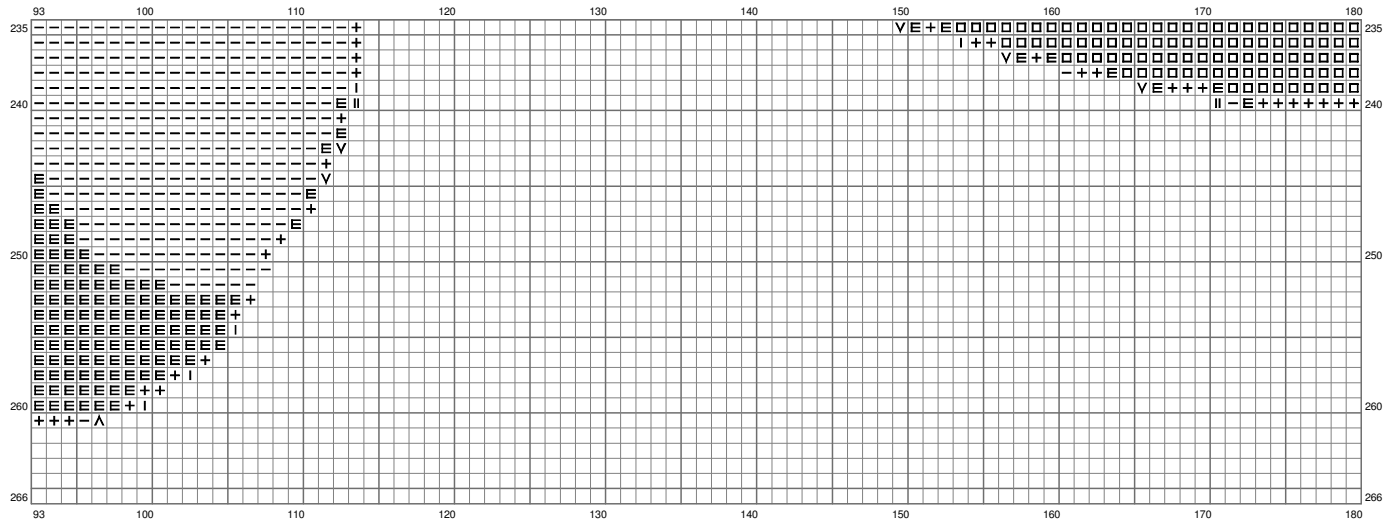


(This chart is printed using KG-Chart LE for Cross Stitch.)

Totoro



Totoro



(This chart is printed using KG-Chart LE for Cross Stitch.)

Stitch Count:180w x 266h // Cloth:Aida Cloth's Color:White

Finished Size:50.8 cm x 75.07 cm (18 ct./inch) // Total 11 Colors

Color Table (DMC)

Cross Stitch

+	310	(1325 ct)
□	829	(2362 ct)
✱	372	(67 ct)
×	734	(1571 ct)
E	3021	(4931 ct)
#	3078	(8931 ct)
—	3787	(8315 ct)
I	3022	(234 ct)
V	3023	(90 ct)
^	928	(225 ct)
	762	(36 ct)