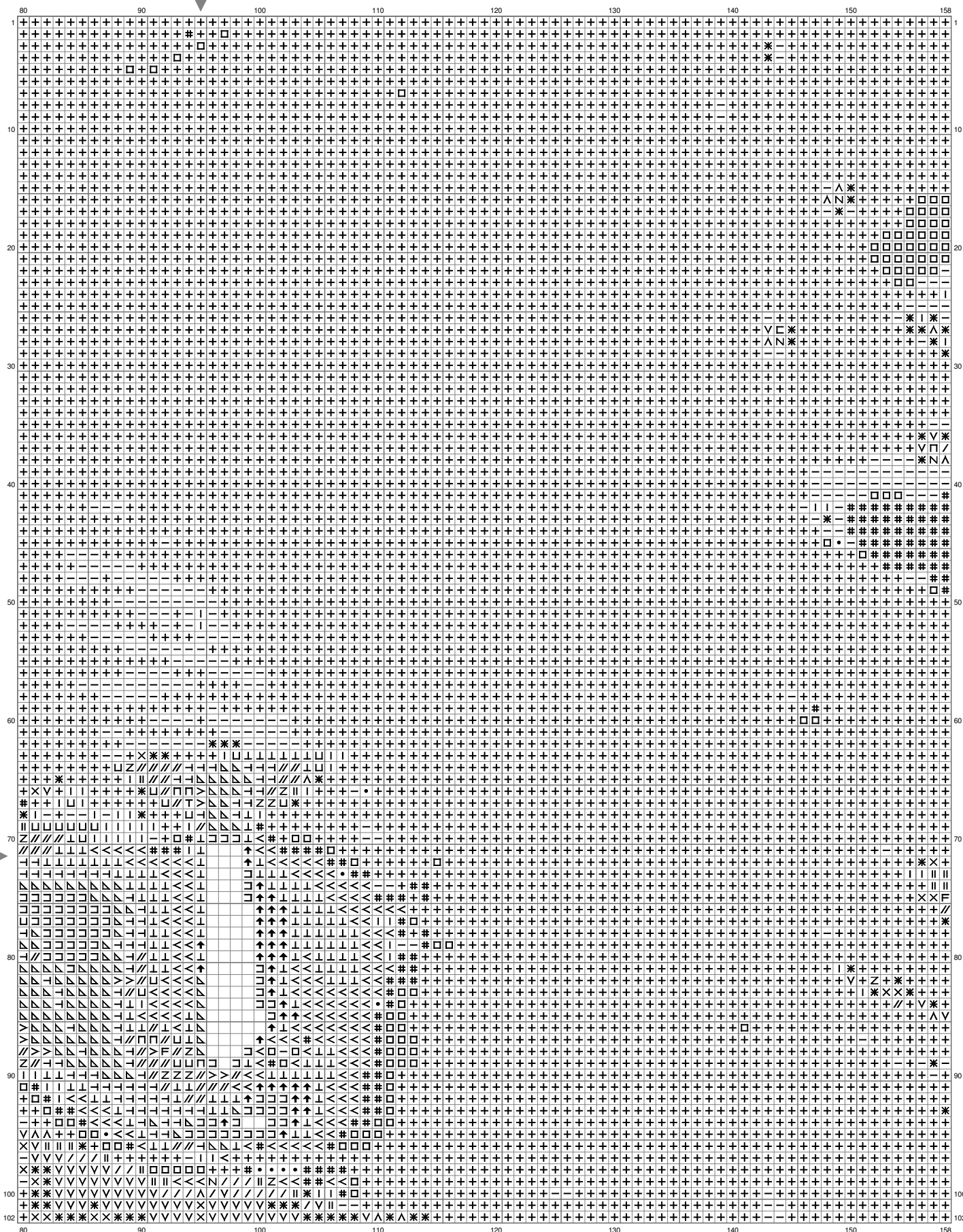


VV



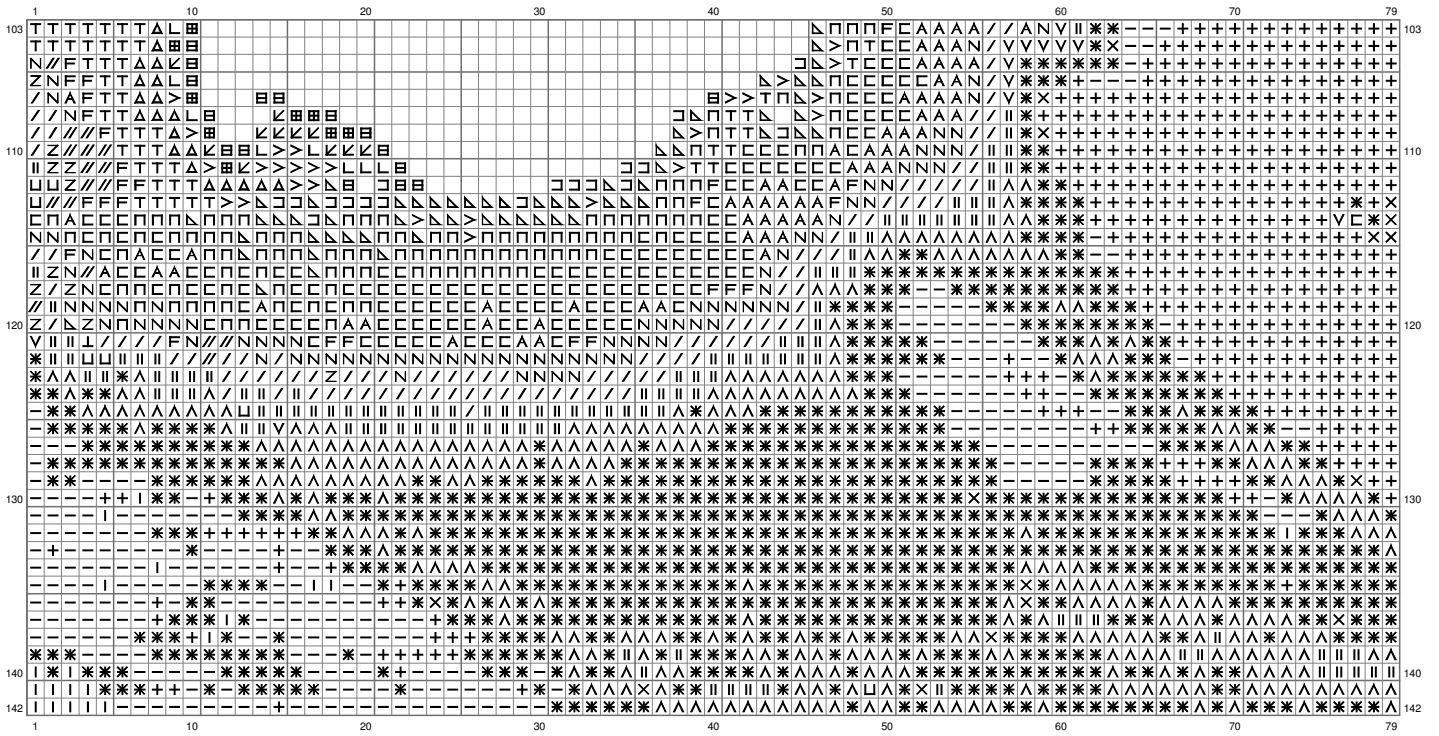
(This chart is printed using KG-Chart LE for Cross Stitch.)

VV

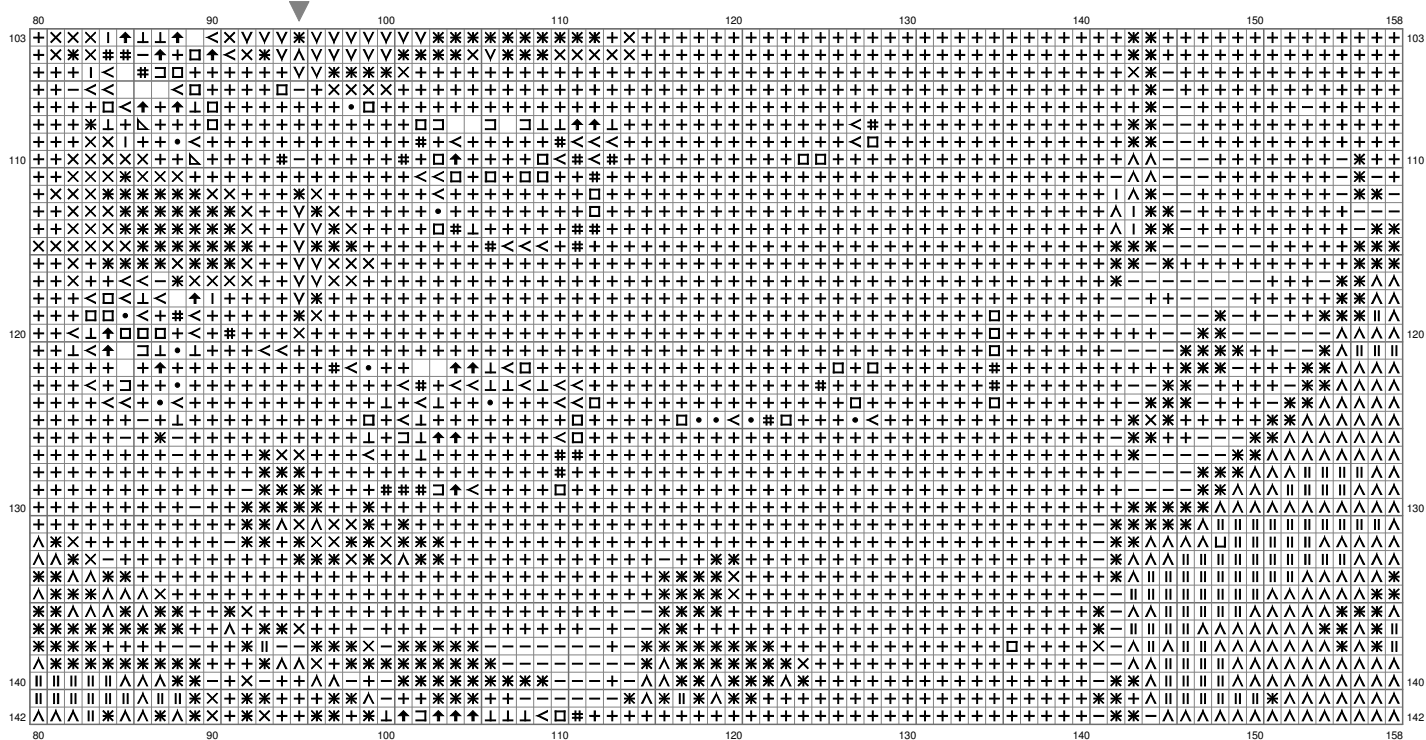


VV

VV

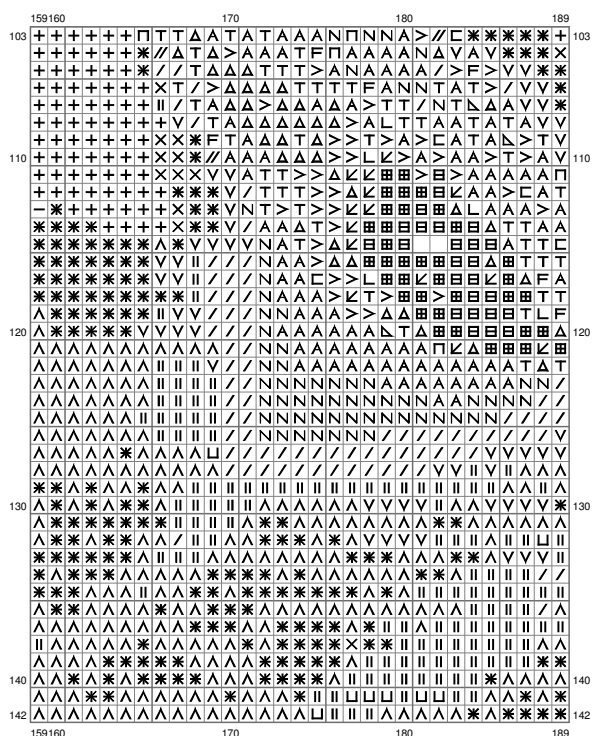


VV



(This chart is printed using KG-Chart LE for Cross Stitch.)

VV



(This chart is printed using KG-Chart LE for Cross Stitch.)

Stitch Count:189w x 142h

Cloth:Aida Cloth's Color:White

Finished Size:53.34 cm x 40.07 cm
(18 ct./inch)

Total 33 Colors

Color Table (DMC)

Cross Stitch

	939	(13526 ct)
	500	(665 ct)
	823	(1124 ct)
	3371	(355 ct)
	814	(1832 ct)
	3031	(505 ct)
	3021	(631 ct)
	336	(242 ct)
	815	(290 ct)
	902	(904 ct)
	221	(473 ct)
	535	(257 ct)
	779	(192 ct)
	355	(416 ct)
	434	(257 ct)
	347	(263 ct)
	919	(316 ct)
	606	(362 ct)
	350	(211 ct)
	921	(241 ct)
	970	(421 ct)
	640	(212 ct)
	436	(101 ct)
	351	(196 ct)
	976	(121 ct)
	3854	(510 ct)
	722	(222 ct)
	307	(158 ct)
	445	(206 ct)
	931	(65 ct)
	842	(102 ct)
	3078	(275 ct)
	3823	(351 ct)