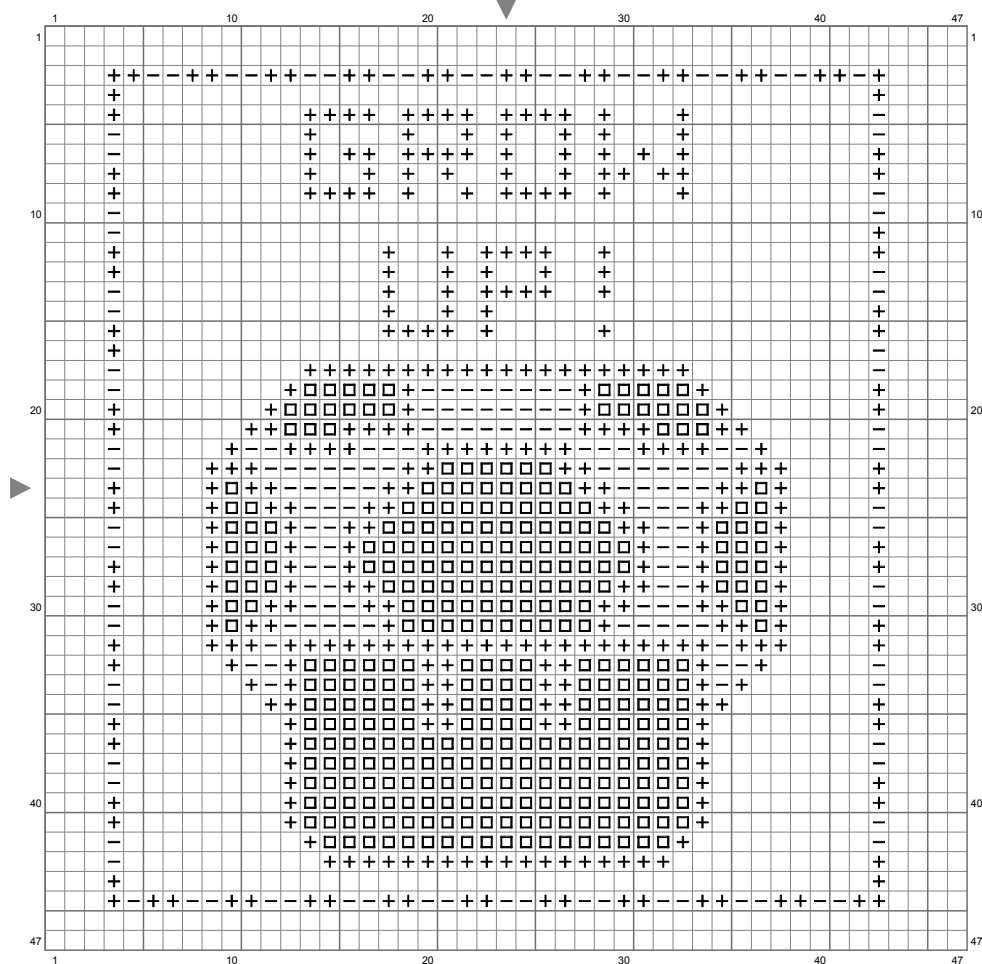


# Untitled



(This chart is printed using KG-Chart LE for Cross Stitch.)

Stitch Count: 47w x 47h // Cloth: Aida Cloth's Color: White

Finished Size: 14.92 cm x 14.92 cm (16 ct./inch) // Total 3 Colors

## Color Table (DMC)

### Cross Stitch

+	310	(389 ct)
□	ECRU	(342 ct)
—	666	(182 ct)