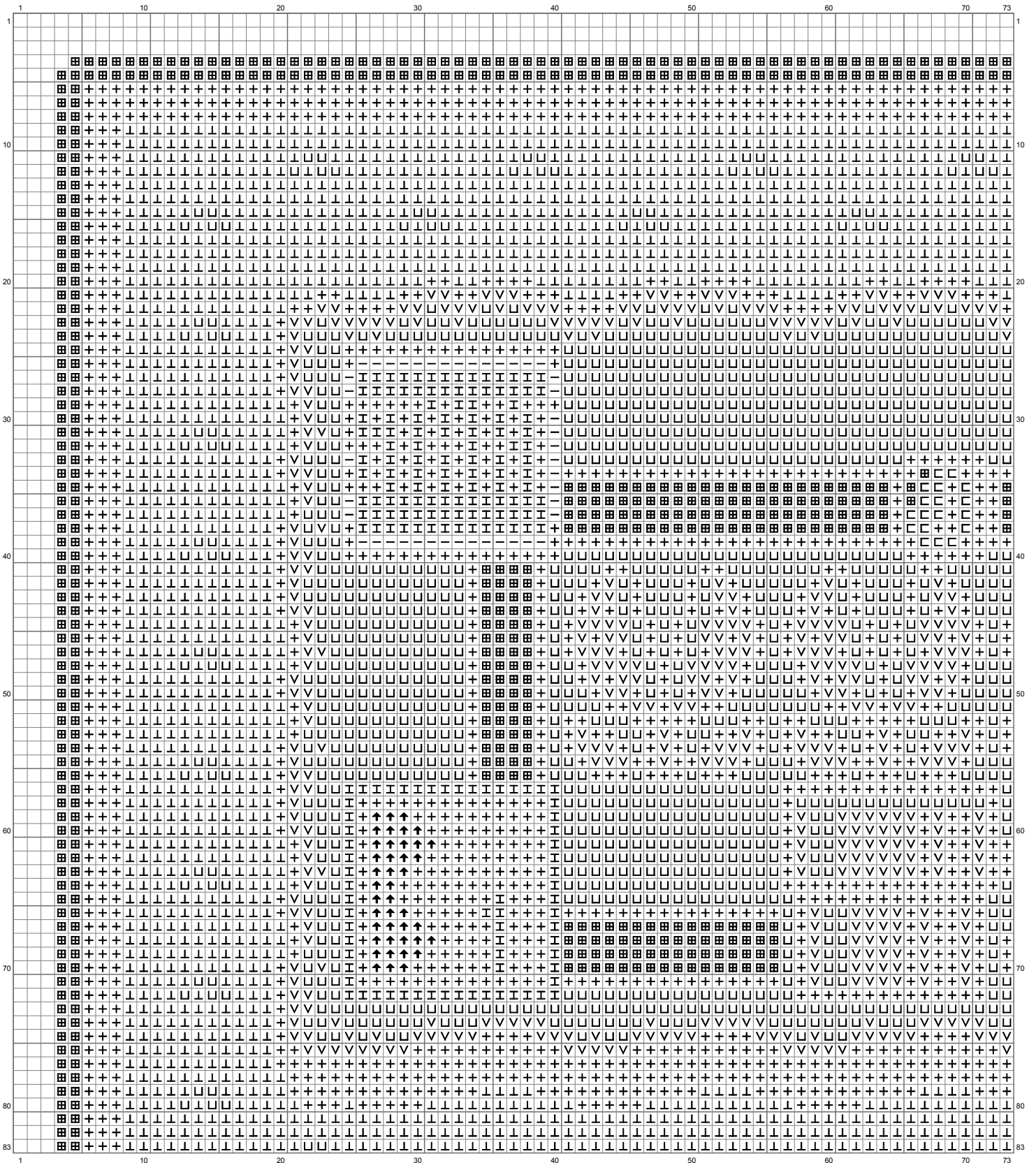
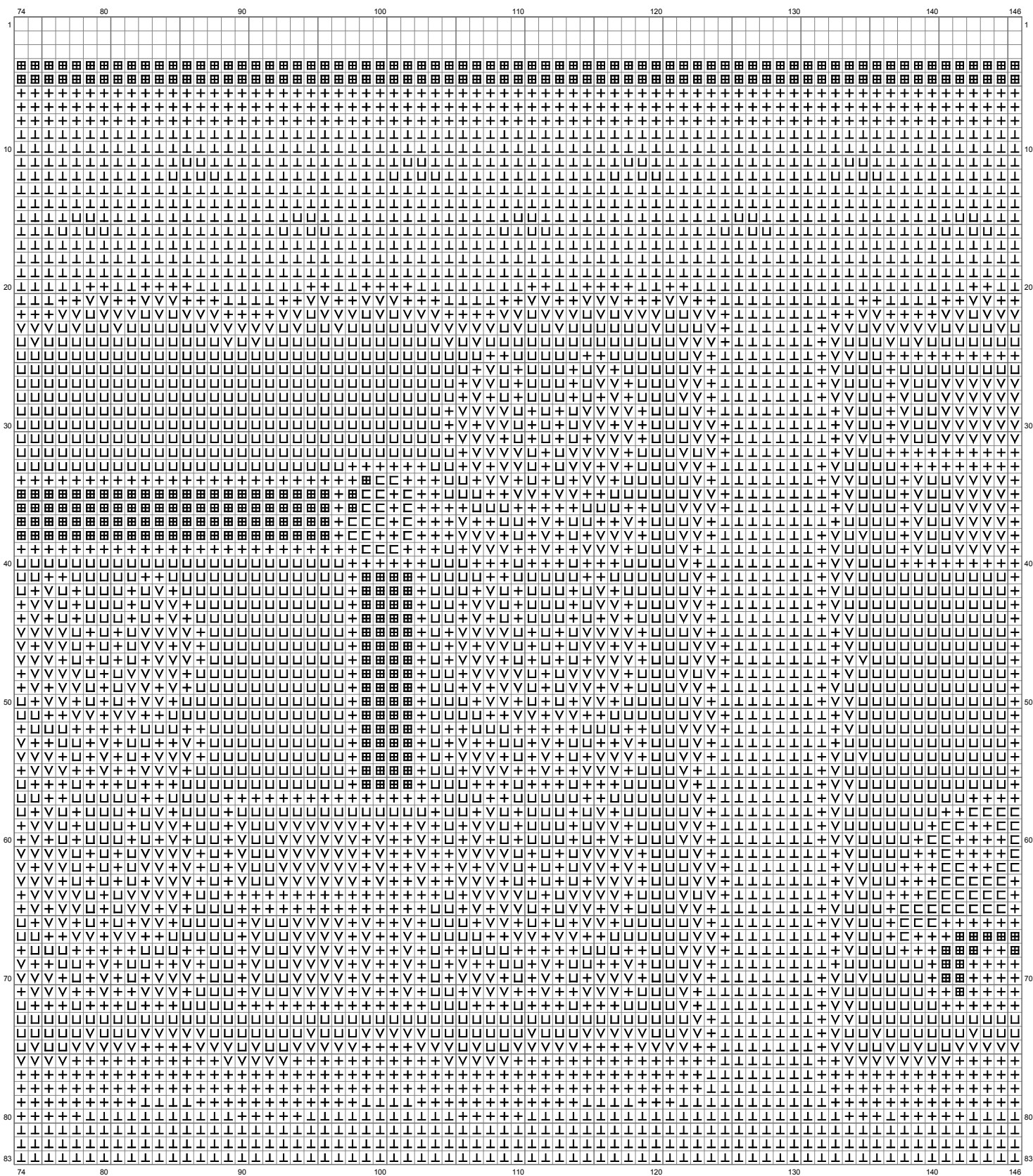


Untitled



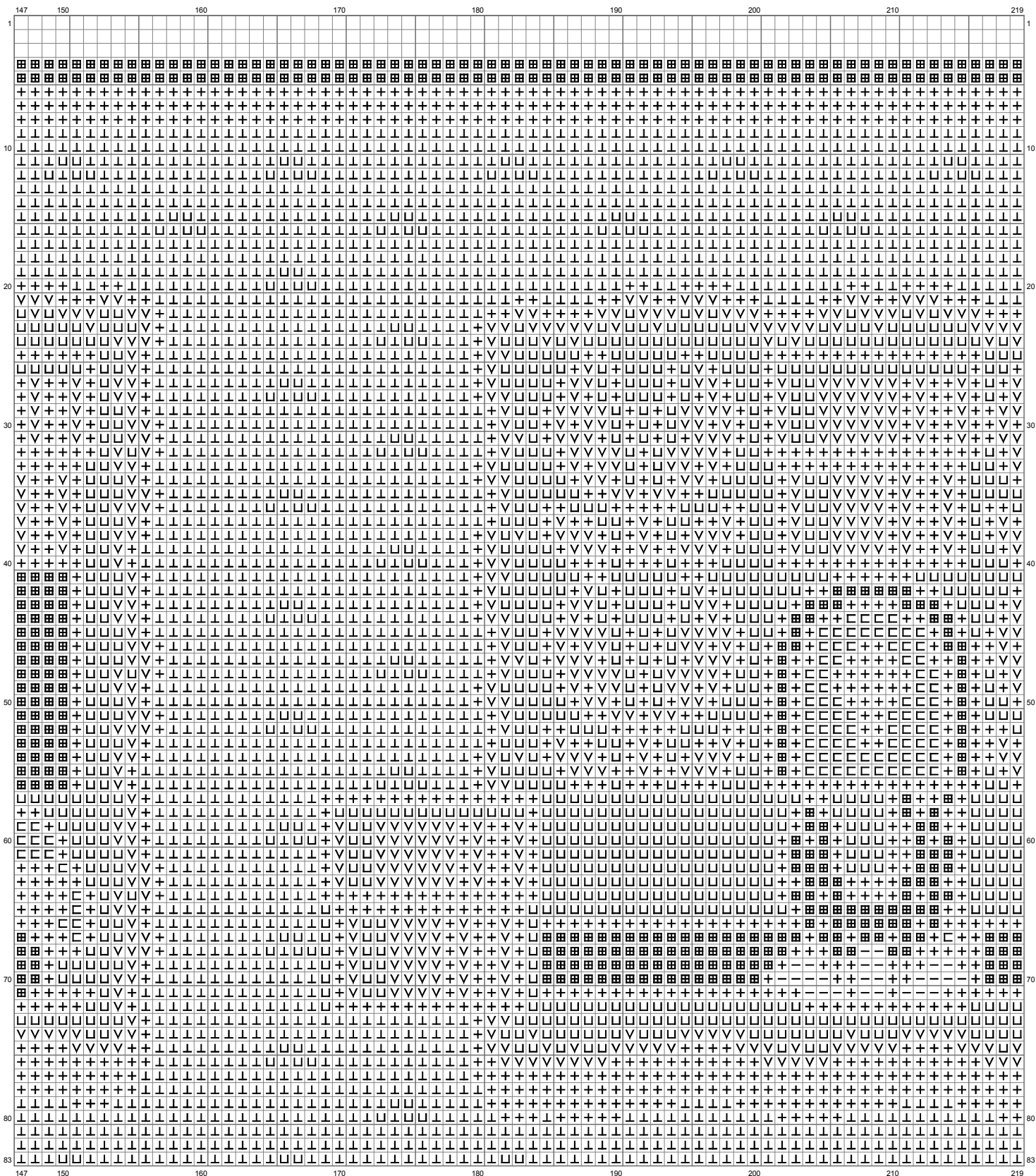
(This chart is printed using KG-Chart LE for Cross Stitch.)

Untitled



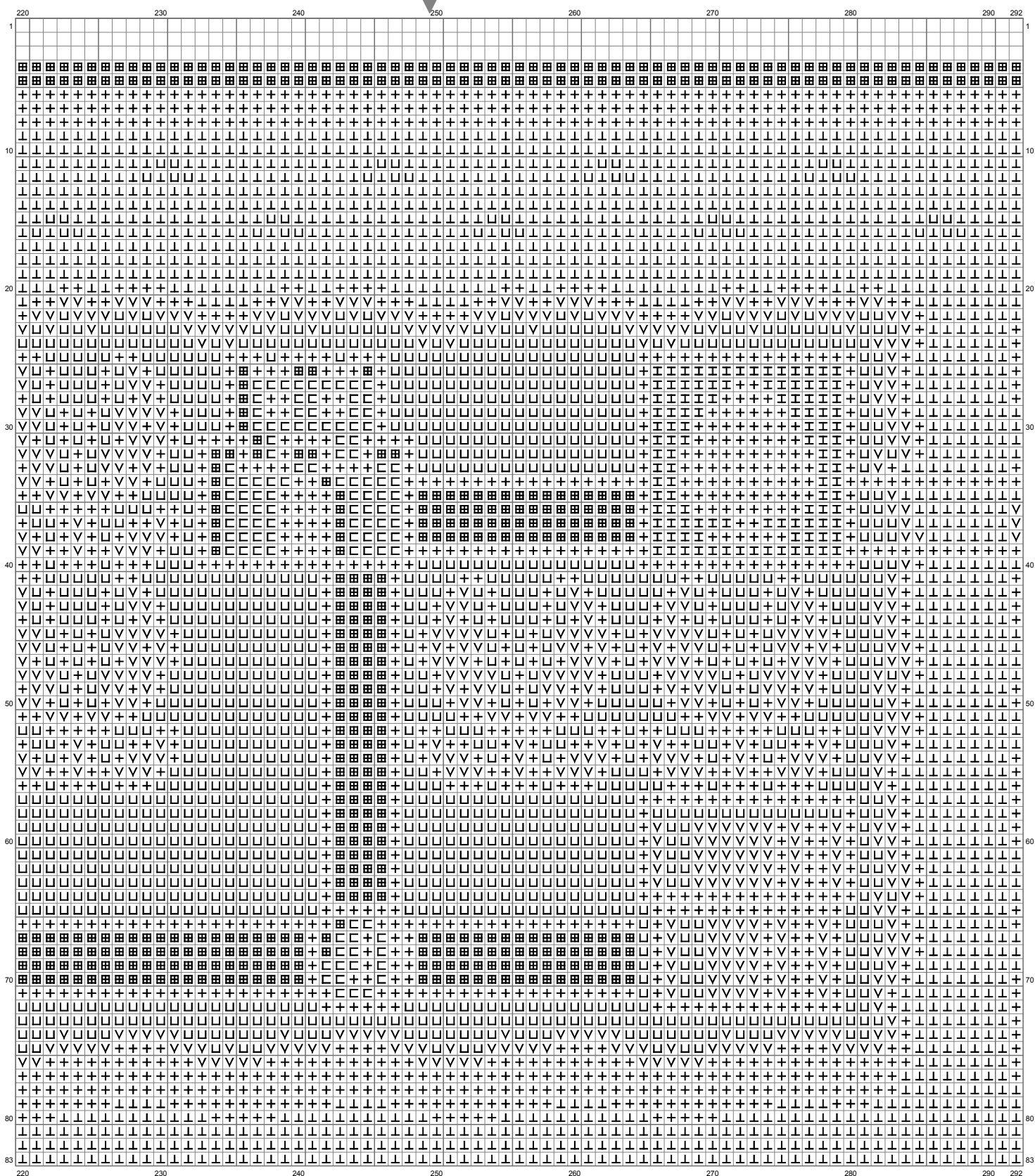
(This chart is printed using KG-Chart LE for Cross Stitch.)

Untitled

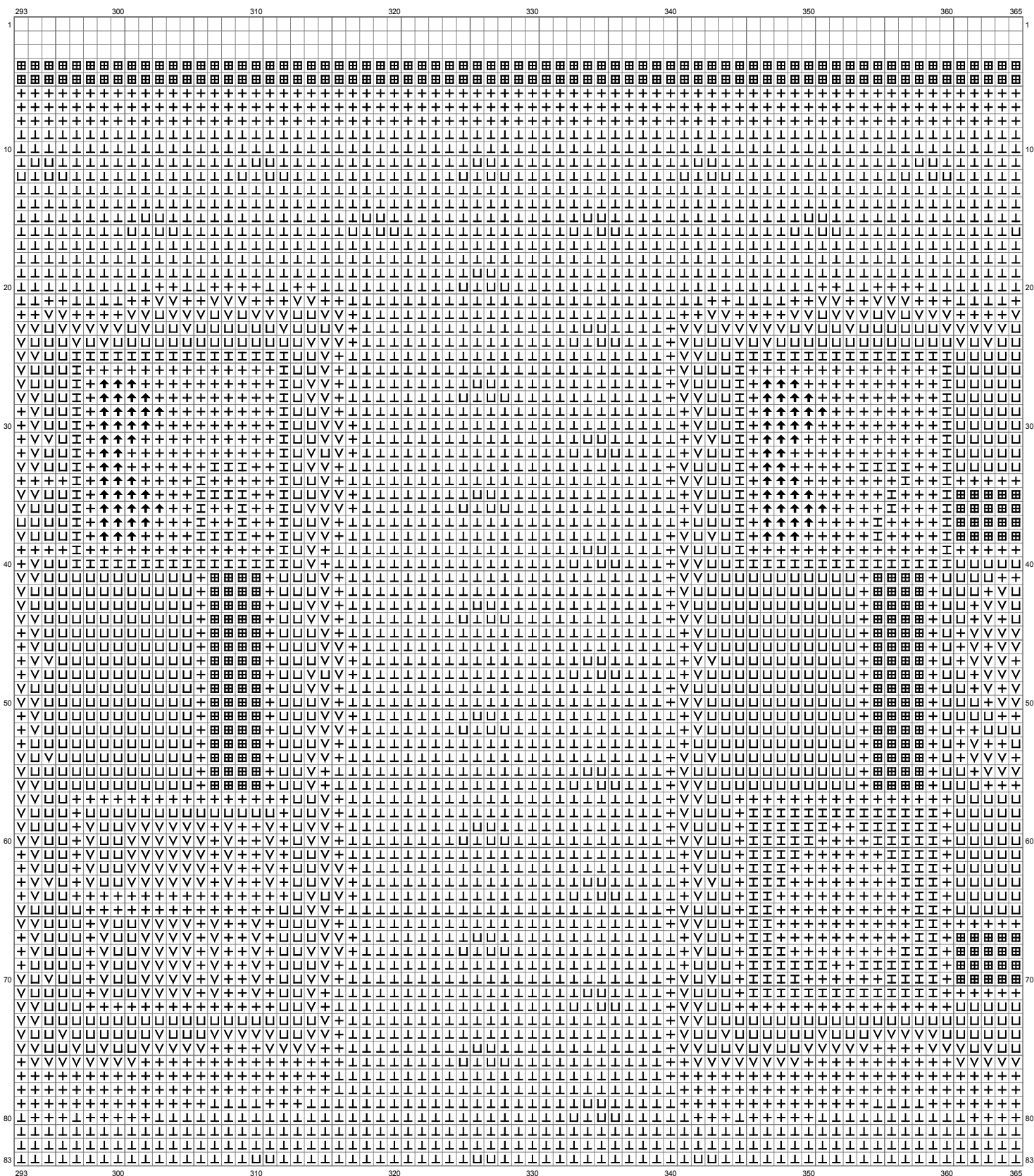


(This chart is printed using KG-Chart LE for Cross Stitch.)

Untitled

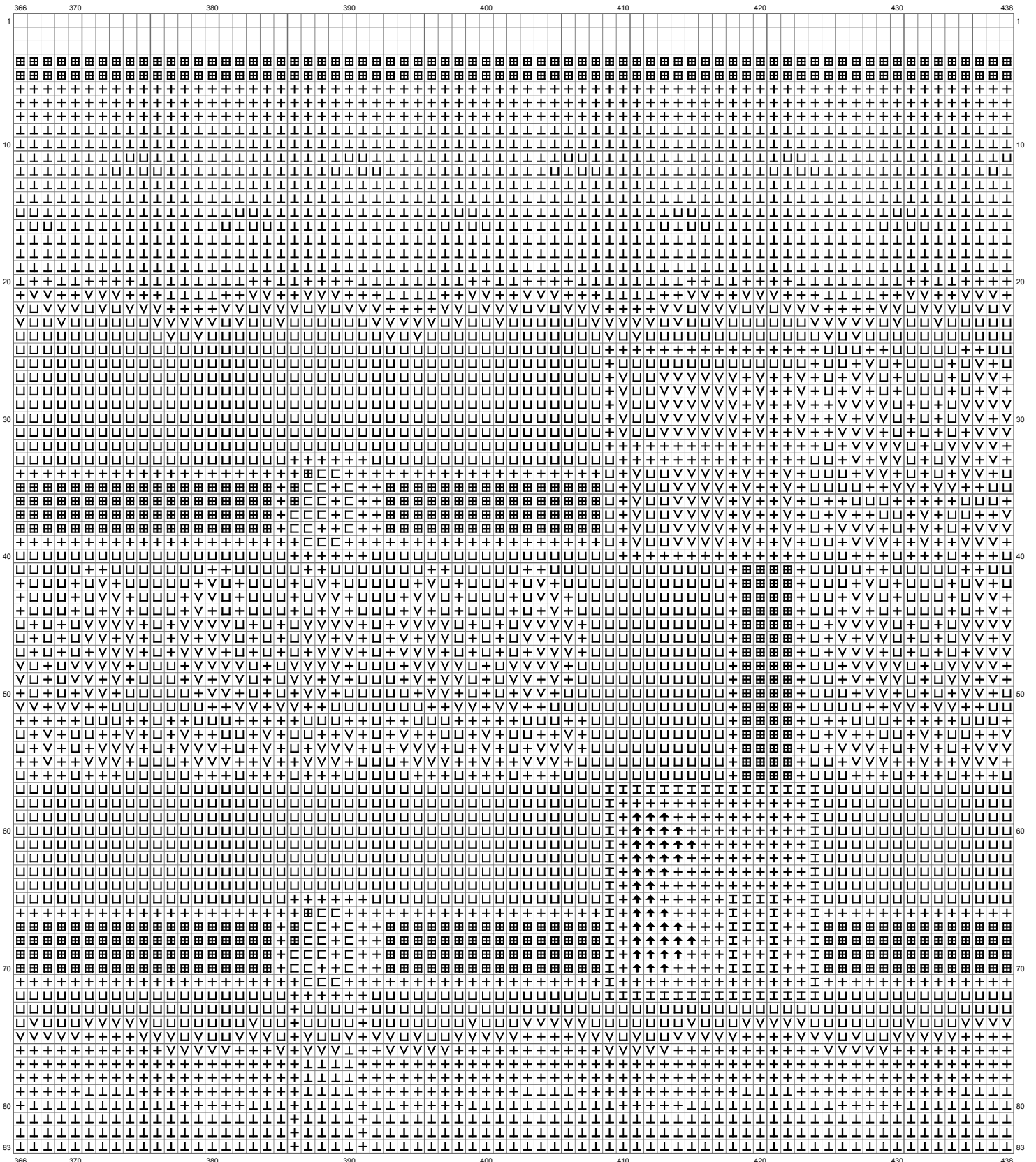


Untitled



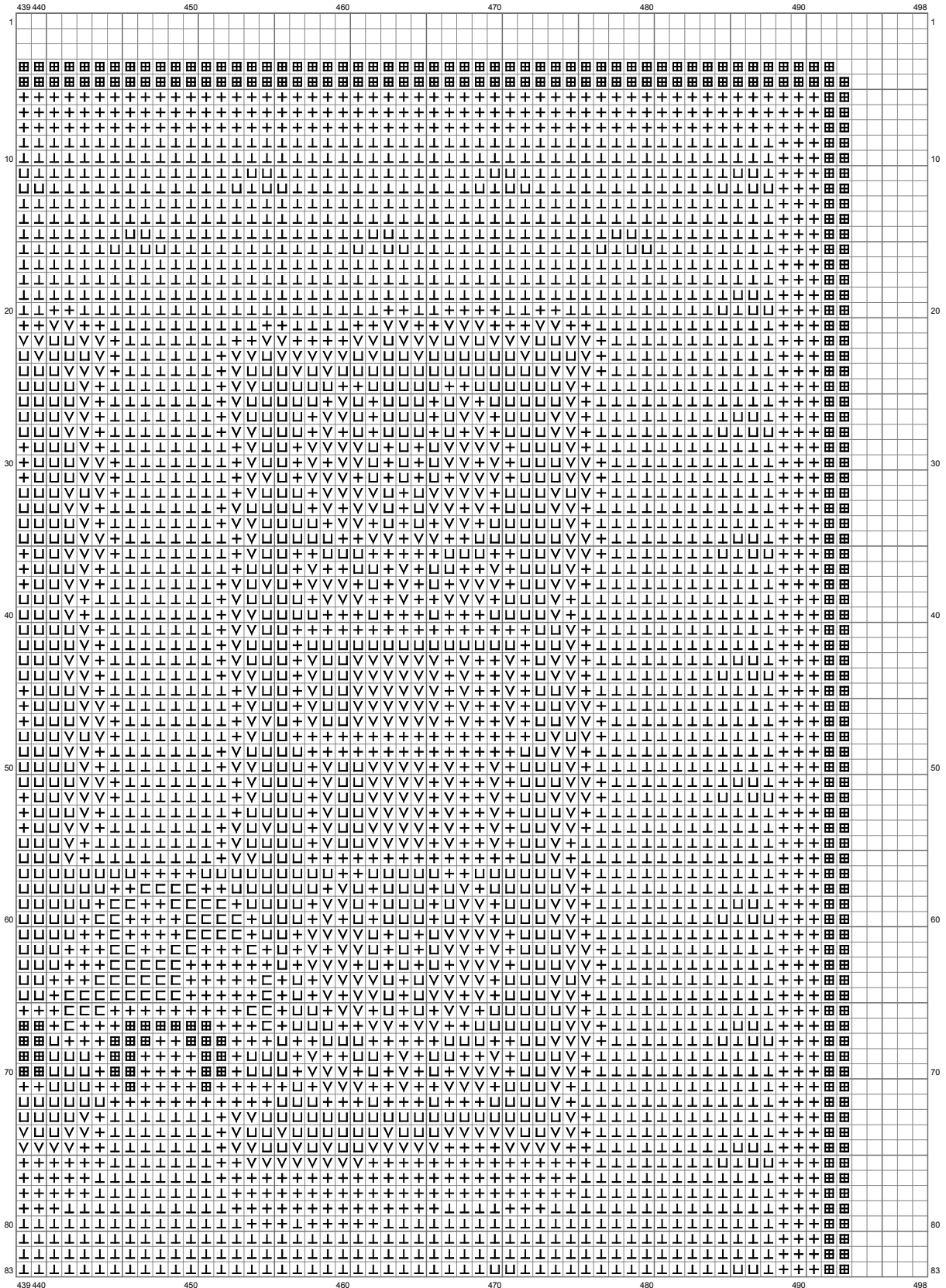
(This chart is printed using KG-Chart LE for Cross Stitch.)

Untitled



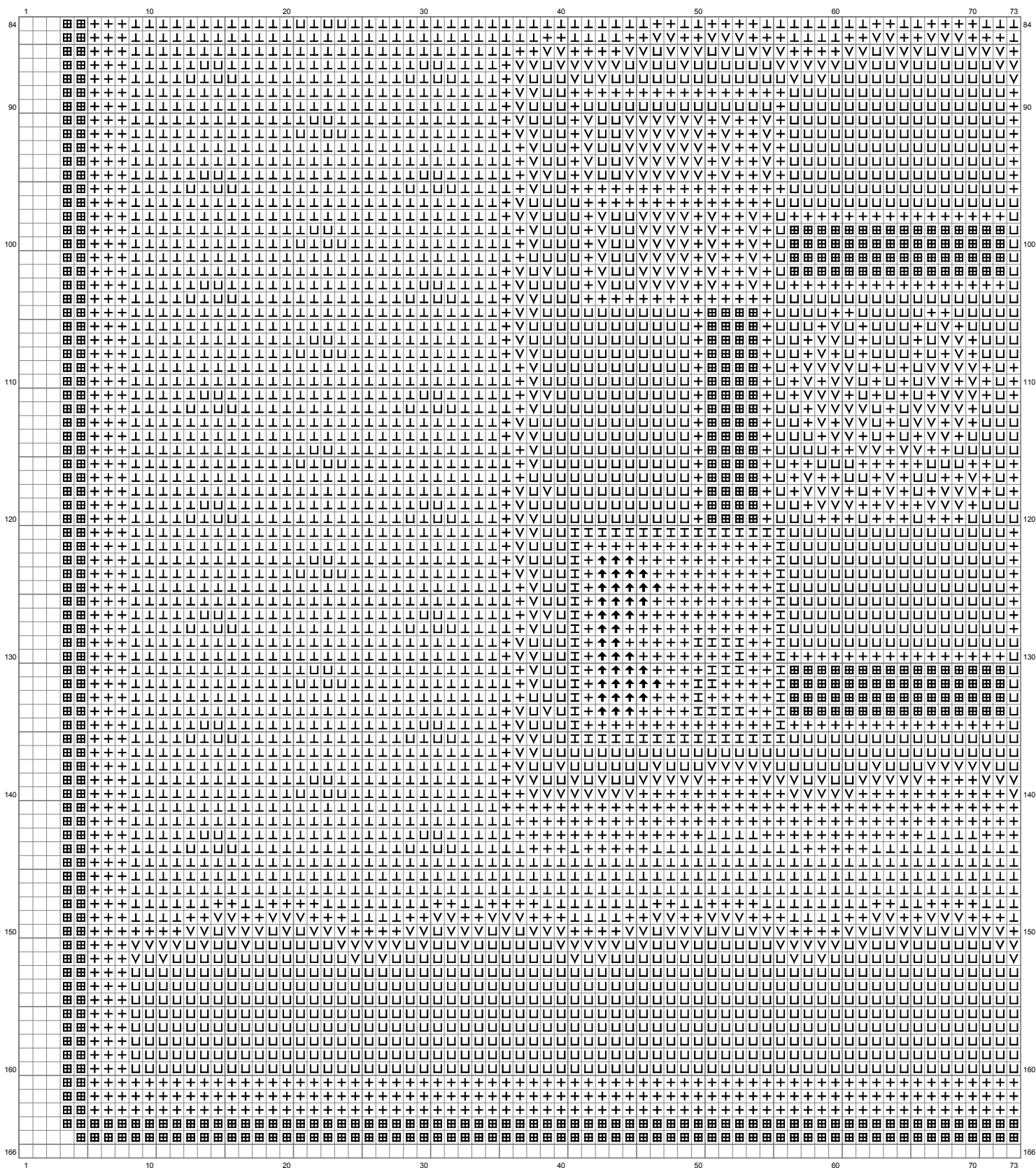
(This chart is printed using KG-Chart LE for Cross Stitch.)

Untitled



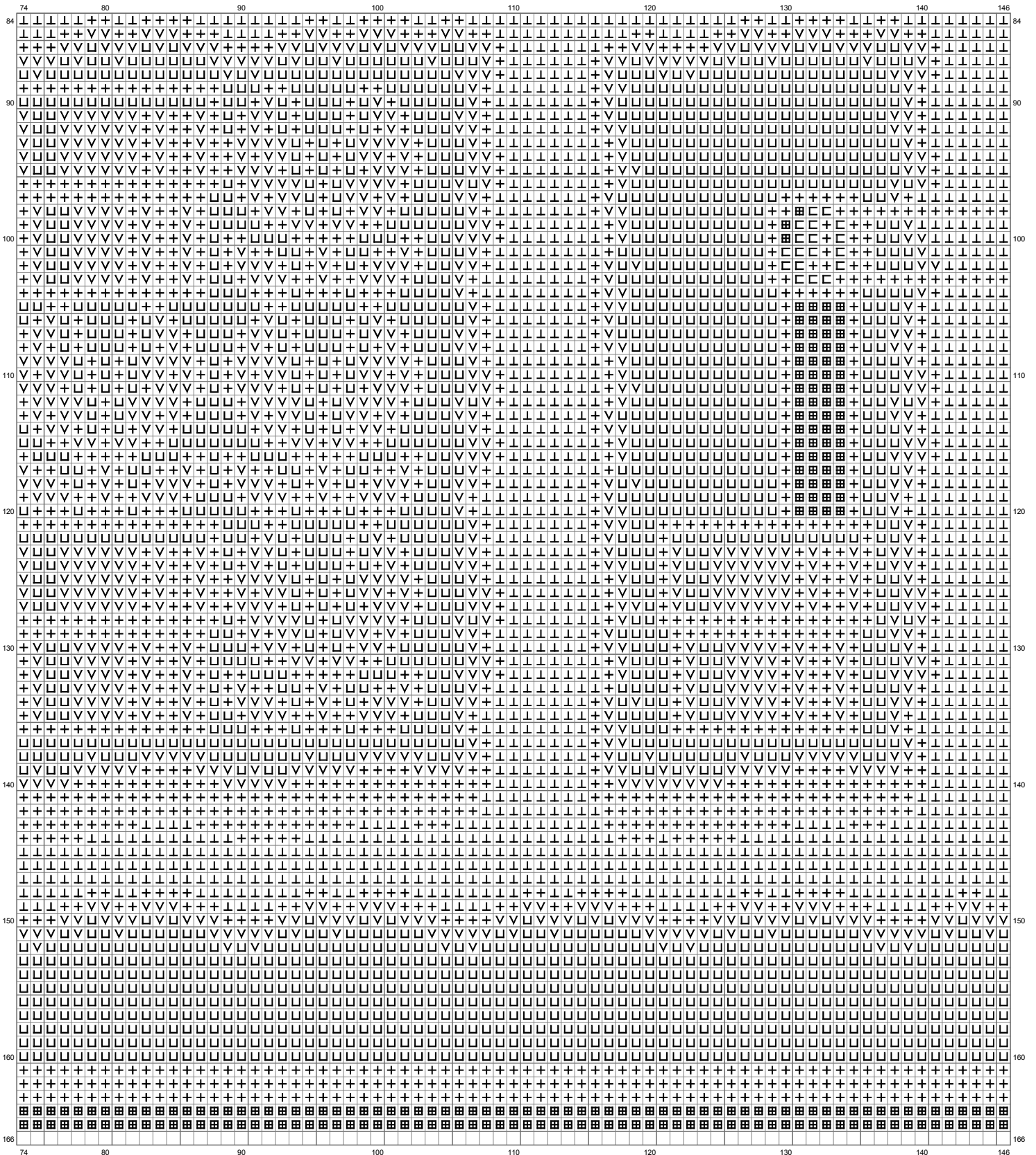
(This chart is printed using KG-Chart LE for Cross Stitch.)

Untitled



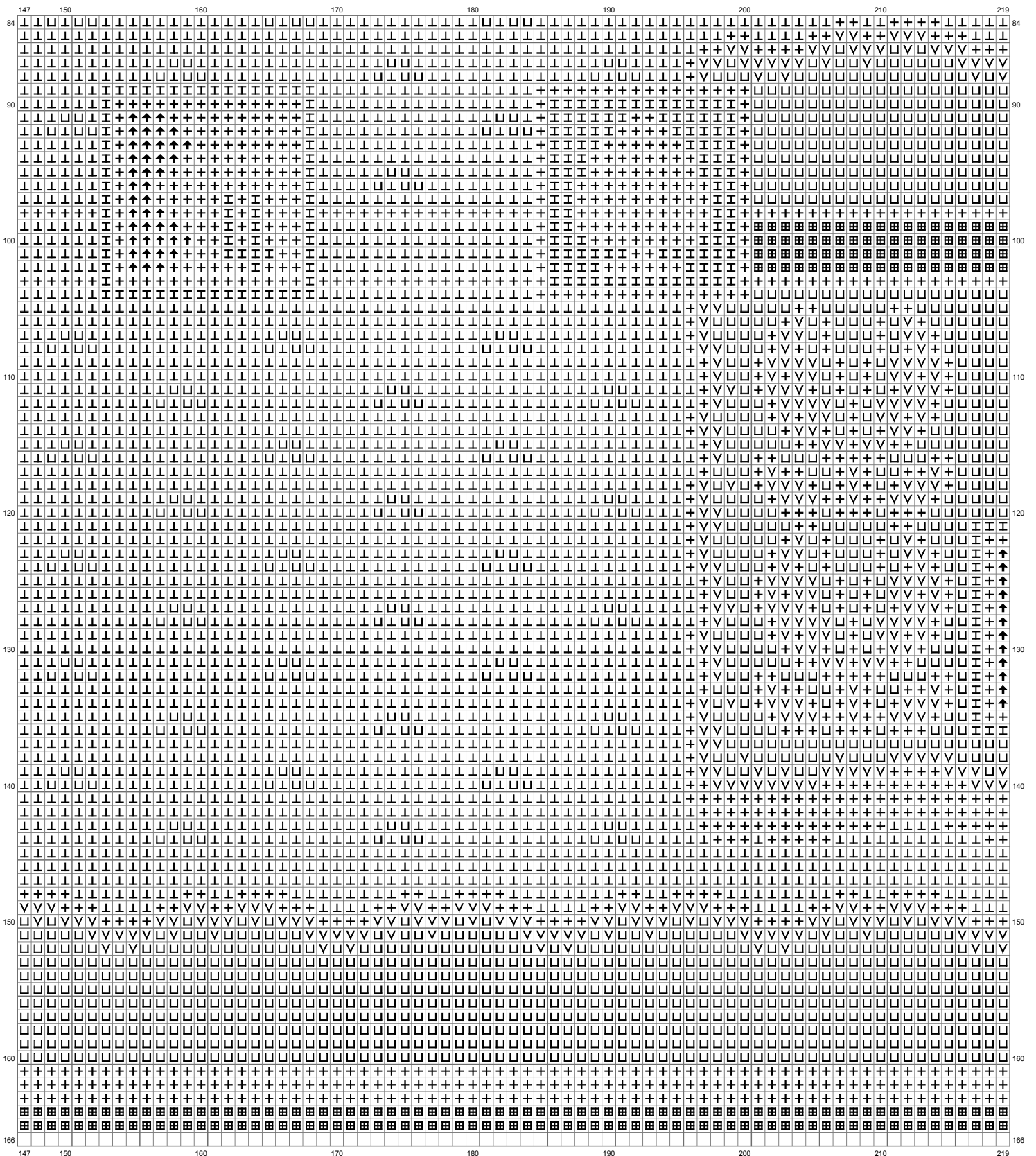
(This chart is printed using KG-Chart LE for Cross Stitch.)

Untitled



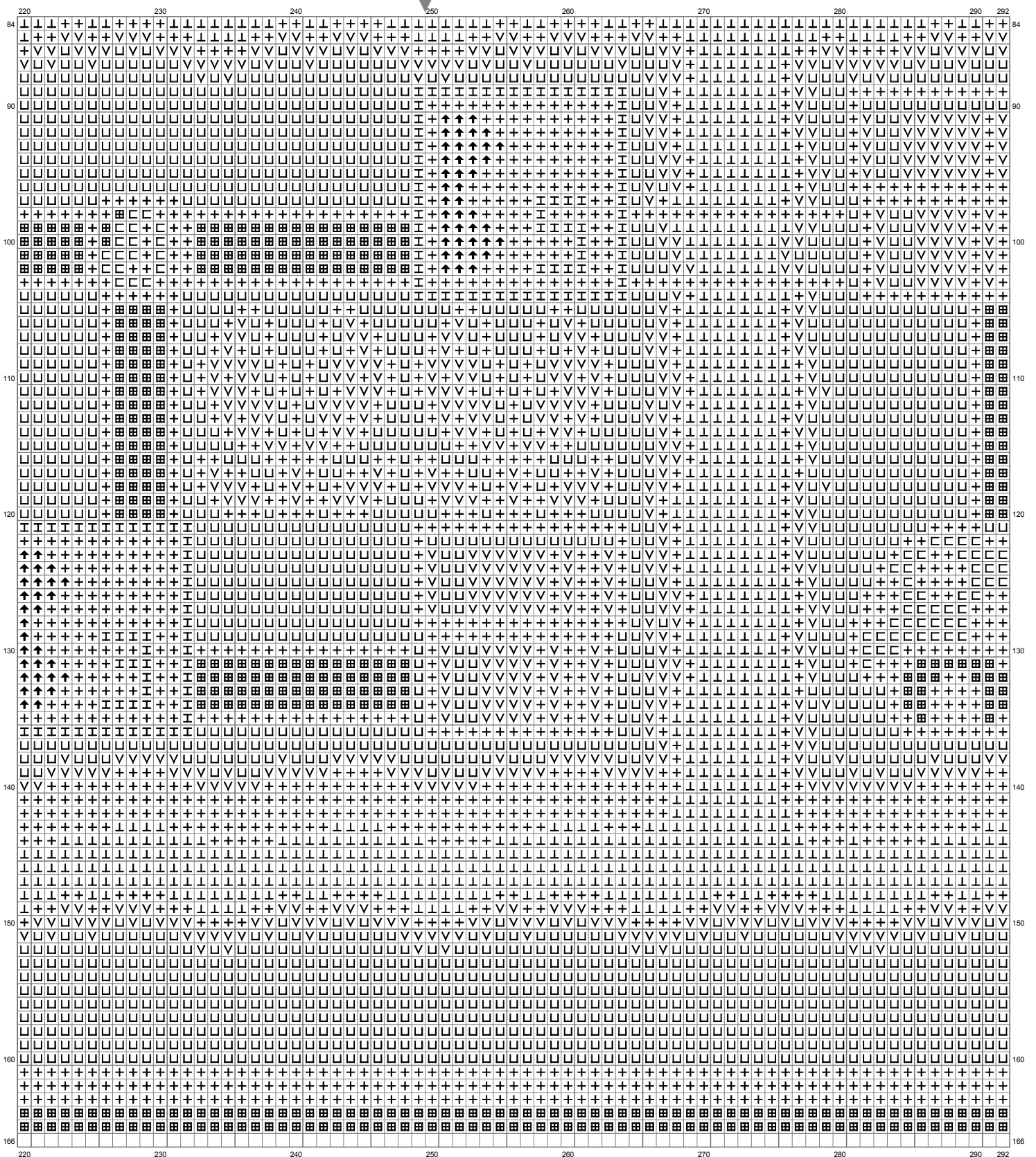
(This chart is printed using KG-Chart LE for Cross Stitch.)

Untitled



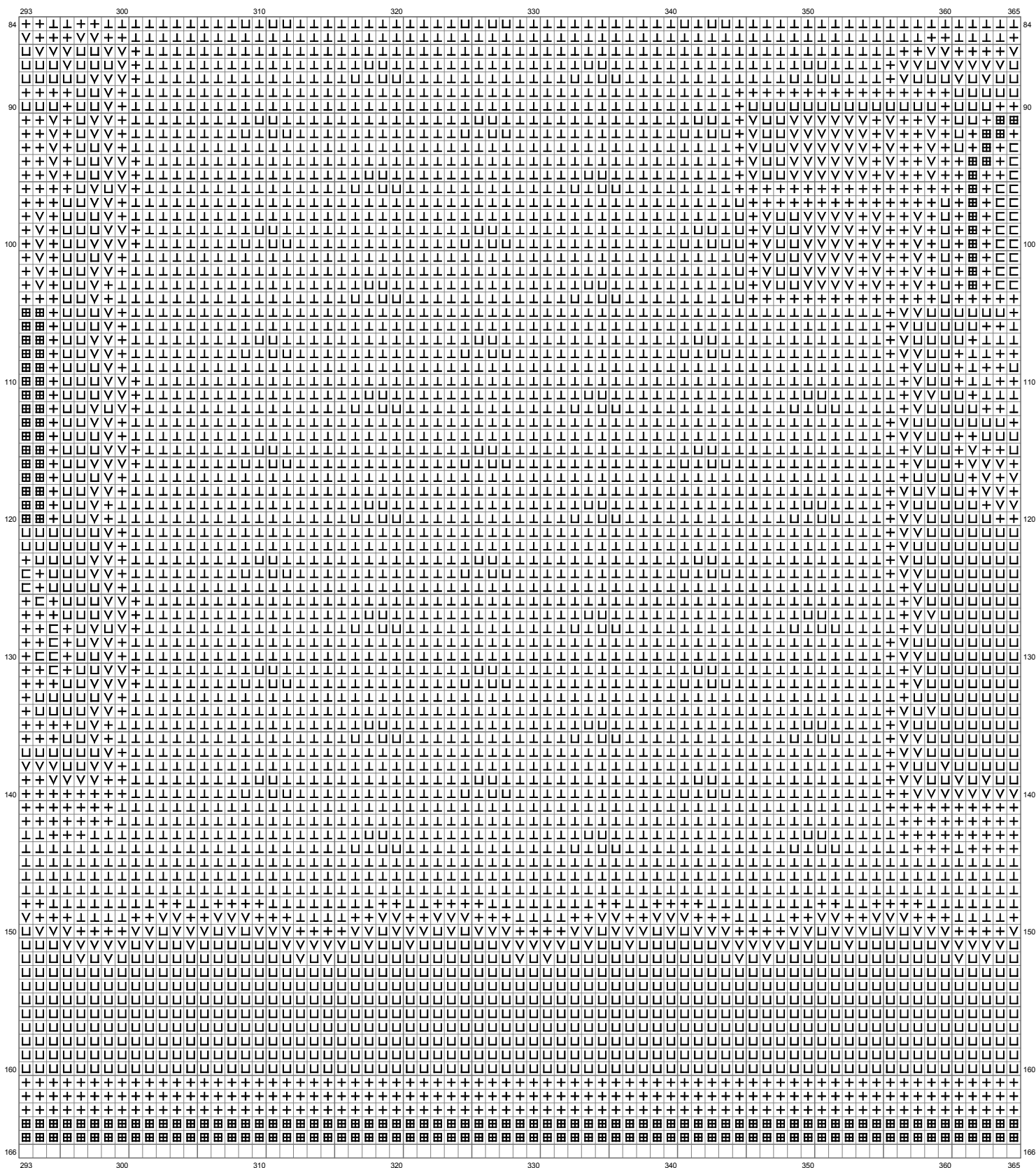
(This chart is printed using KG-Chart LE for Cross Stitch.)

Untitled



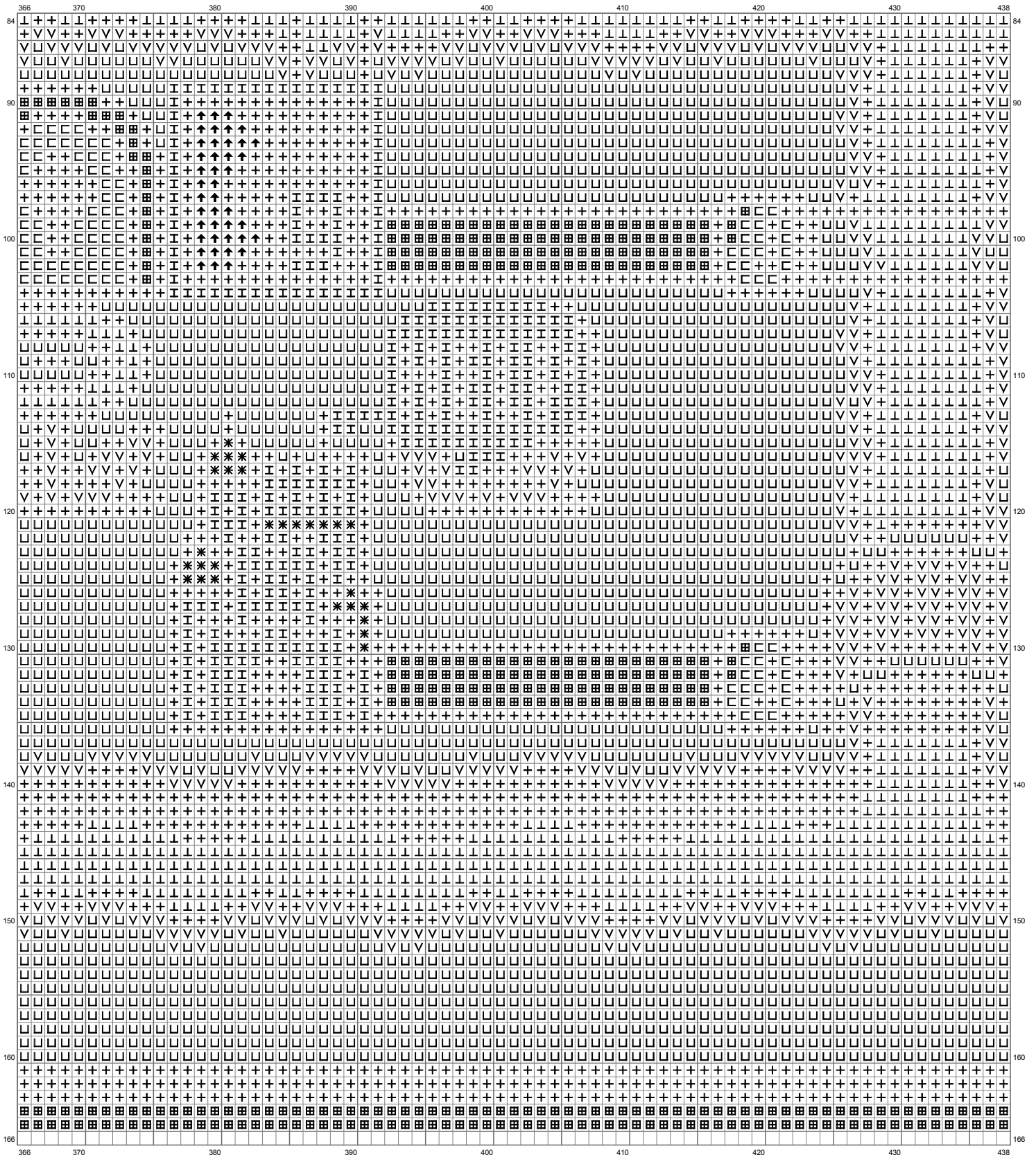
(This chart is printed using KG-Chart LE for Cross Stitch.)

Untitled



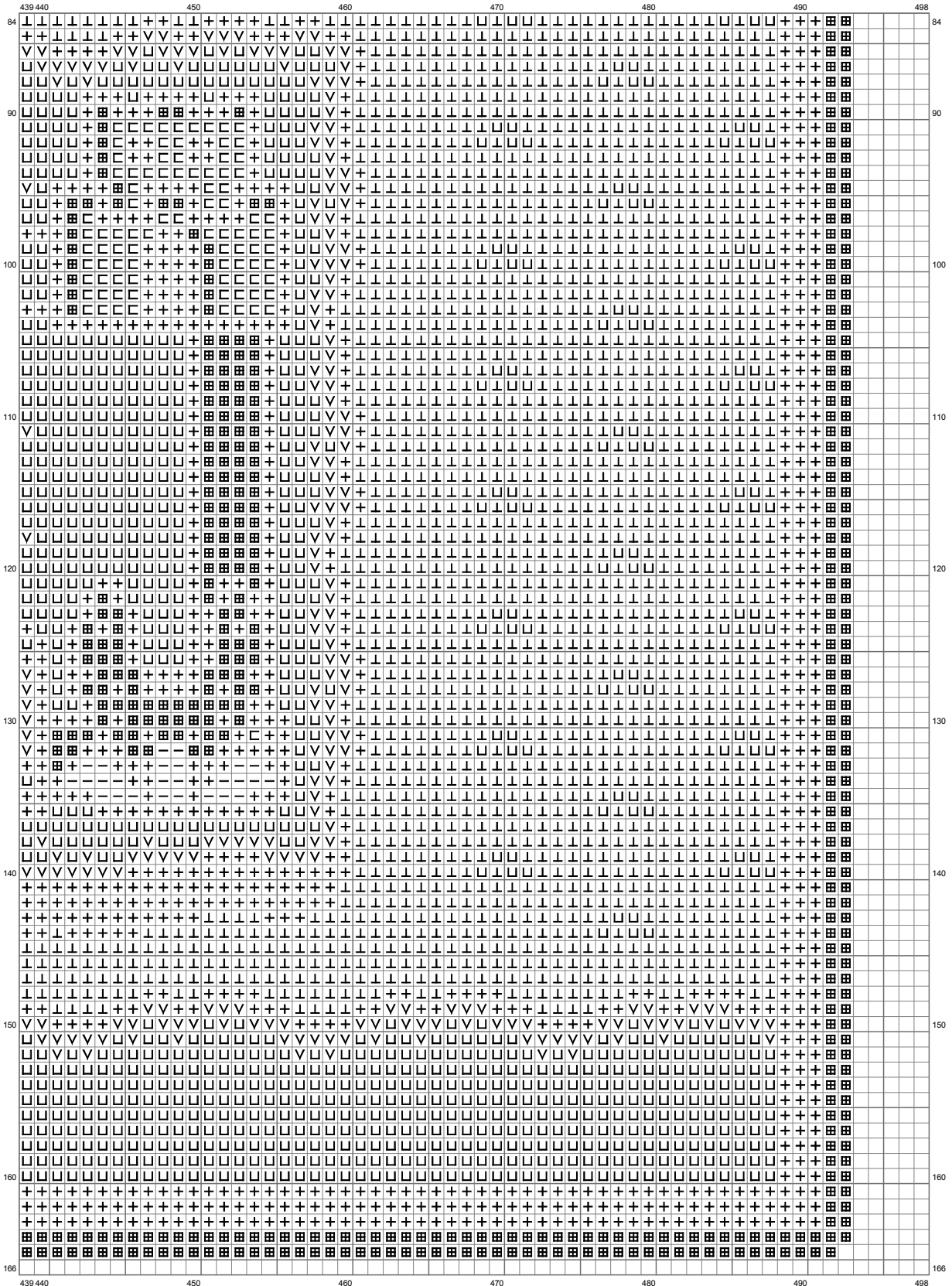
(This chart is printed using KG-Chart LE for Cross Stitch.)

Untitled

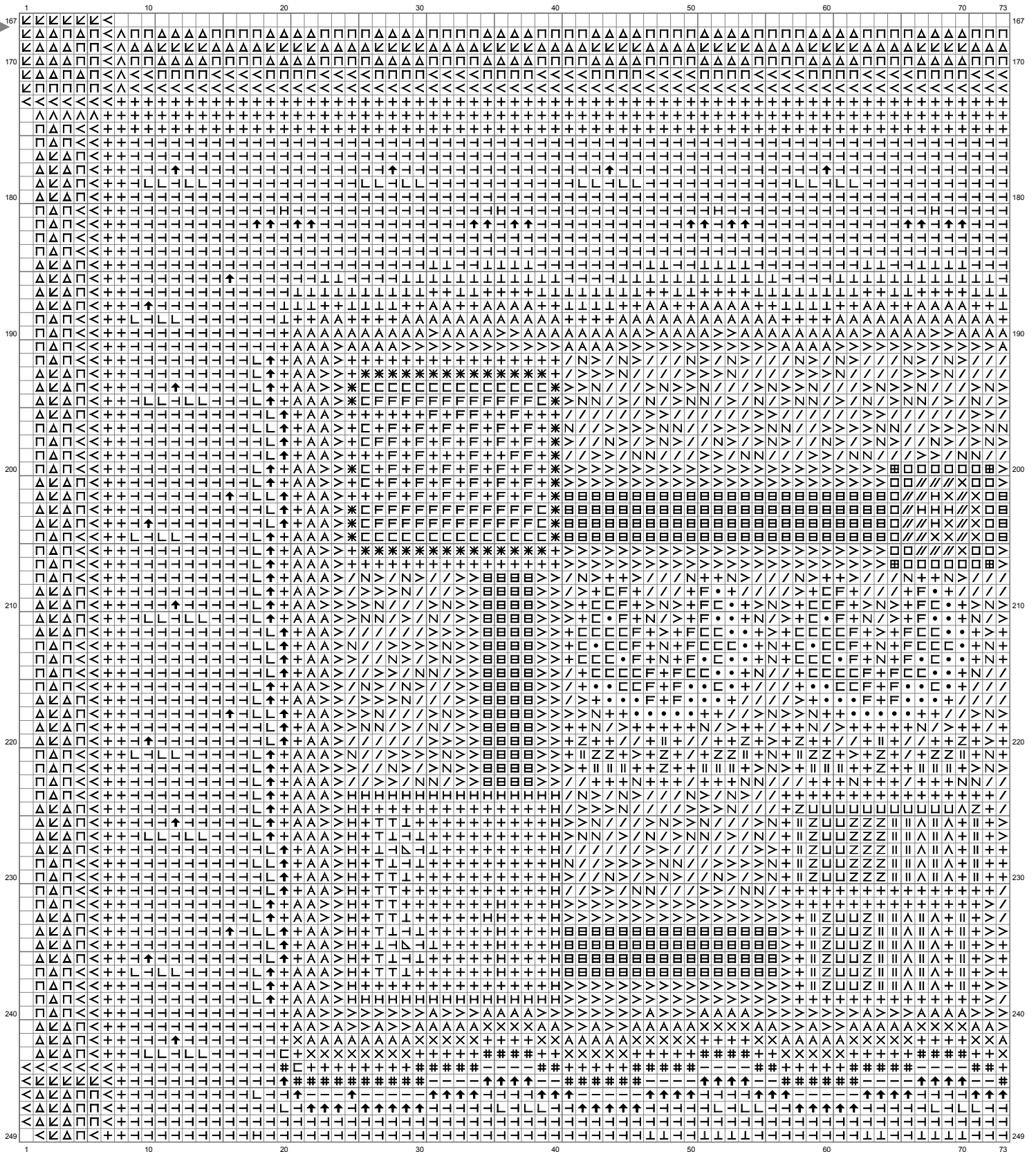


(This chart is printed using KG-Chart LE for Cross Stitch.)

Untitled

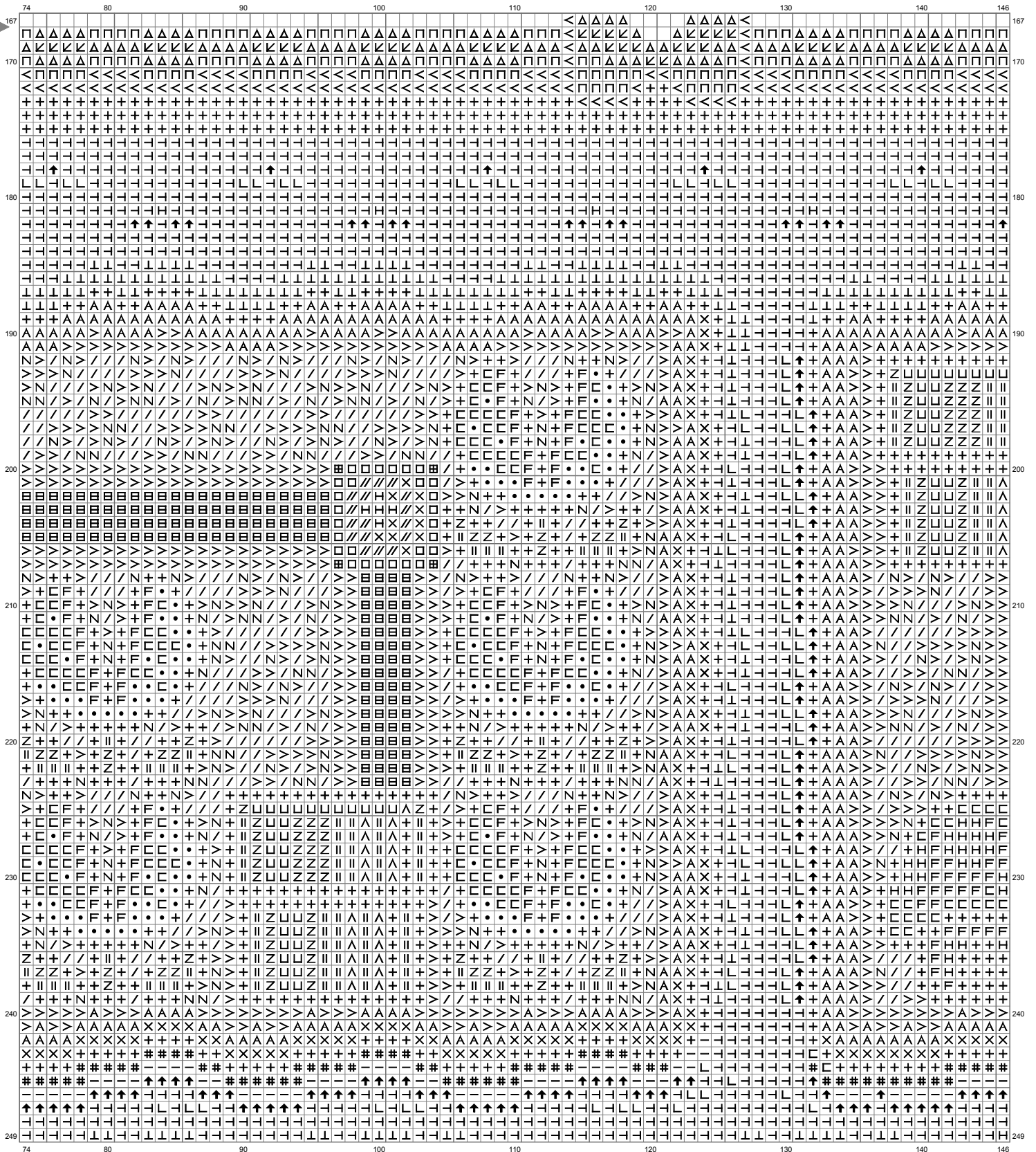


Untitled



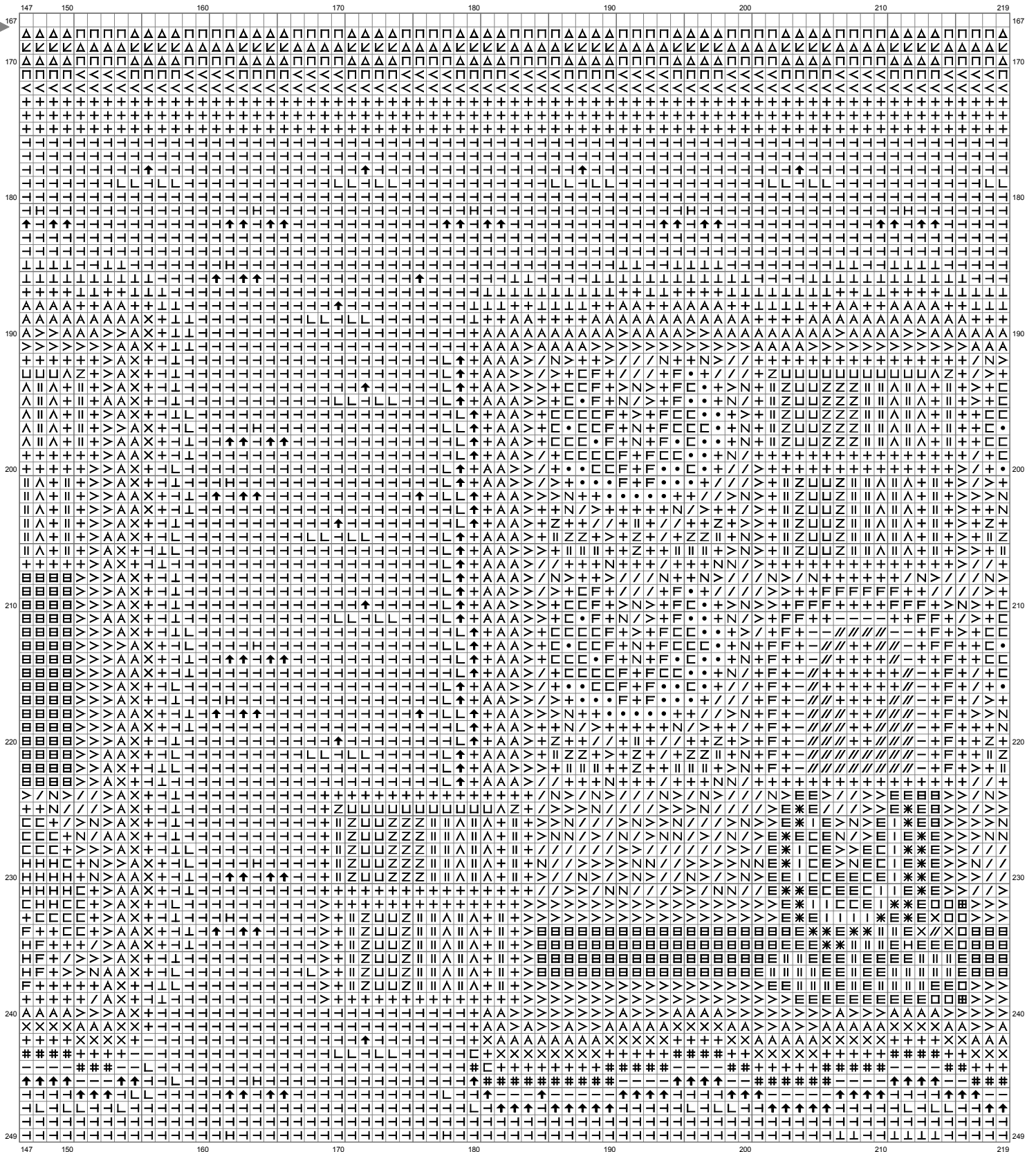
(This chart is printed using KG-Chart LE for Cross Stitch.)

Untitled



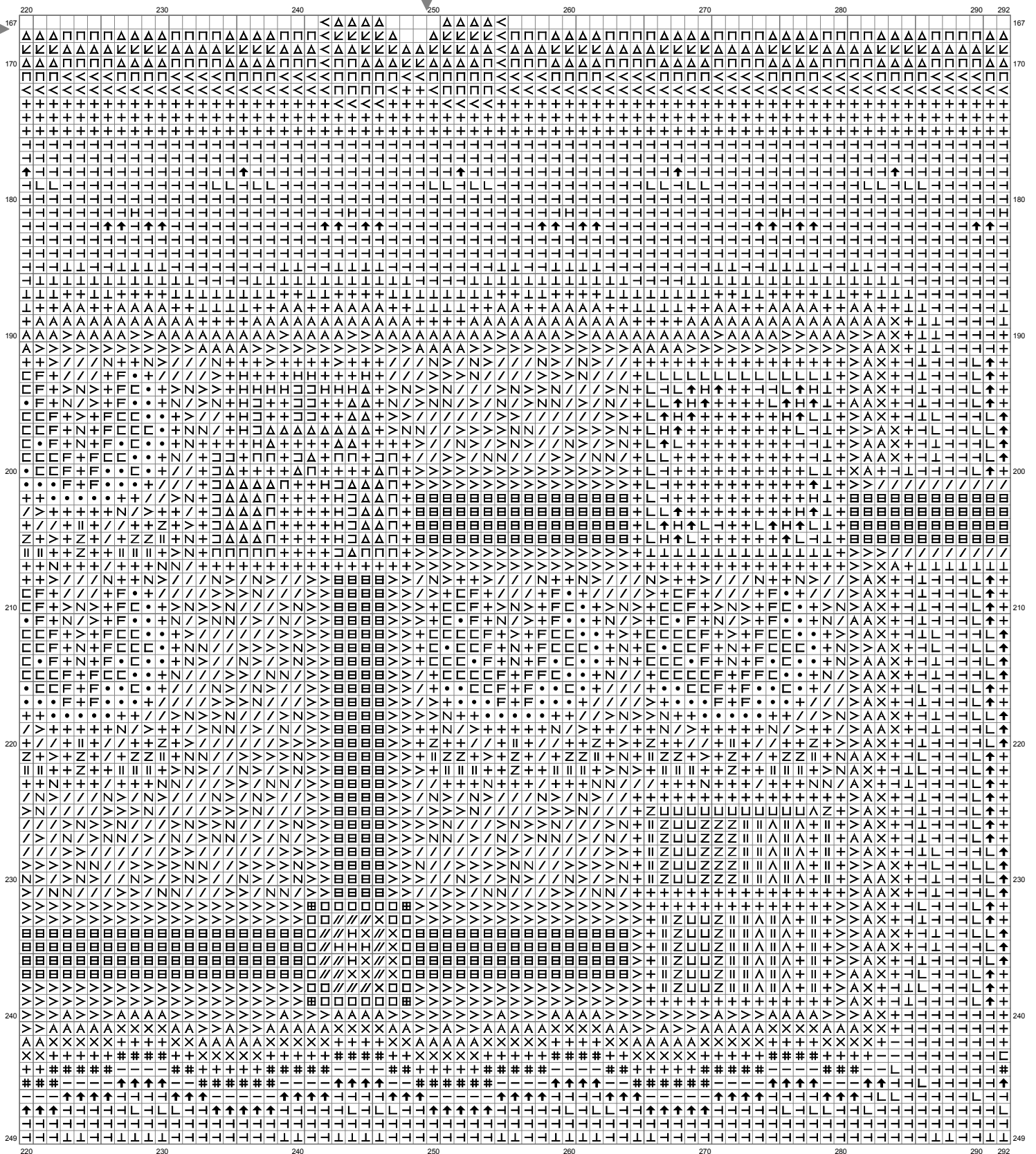
(This chart is printed using KG-Chart LE for Cross Stitch.)

Untitled



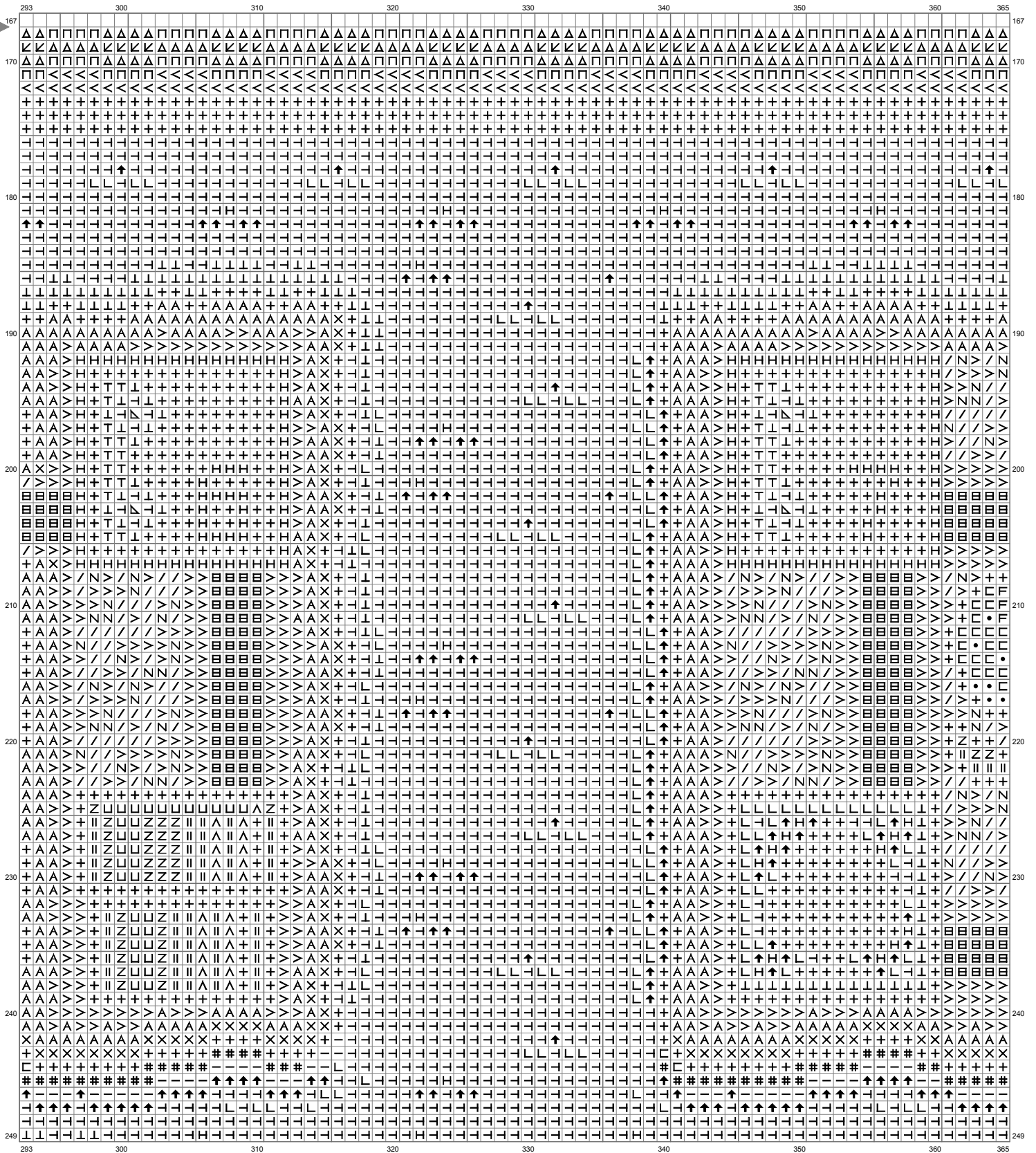
(This chart is printed using KG-Chart LE for Cross Stitch.)

Untitled



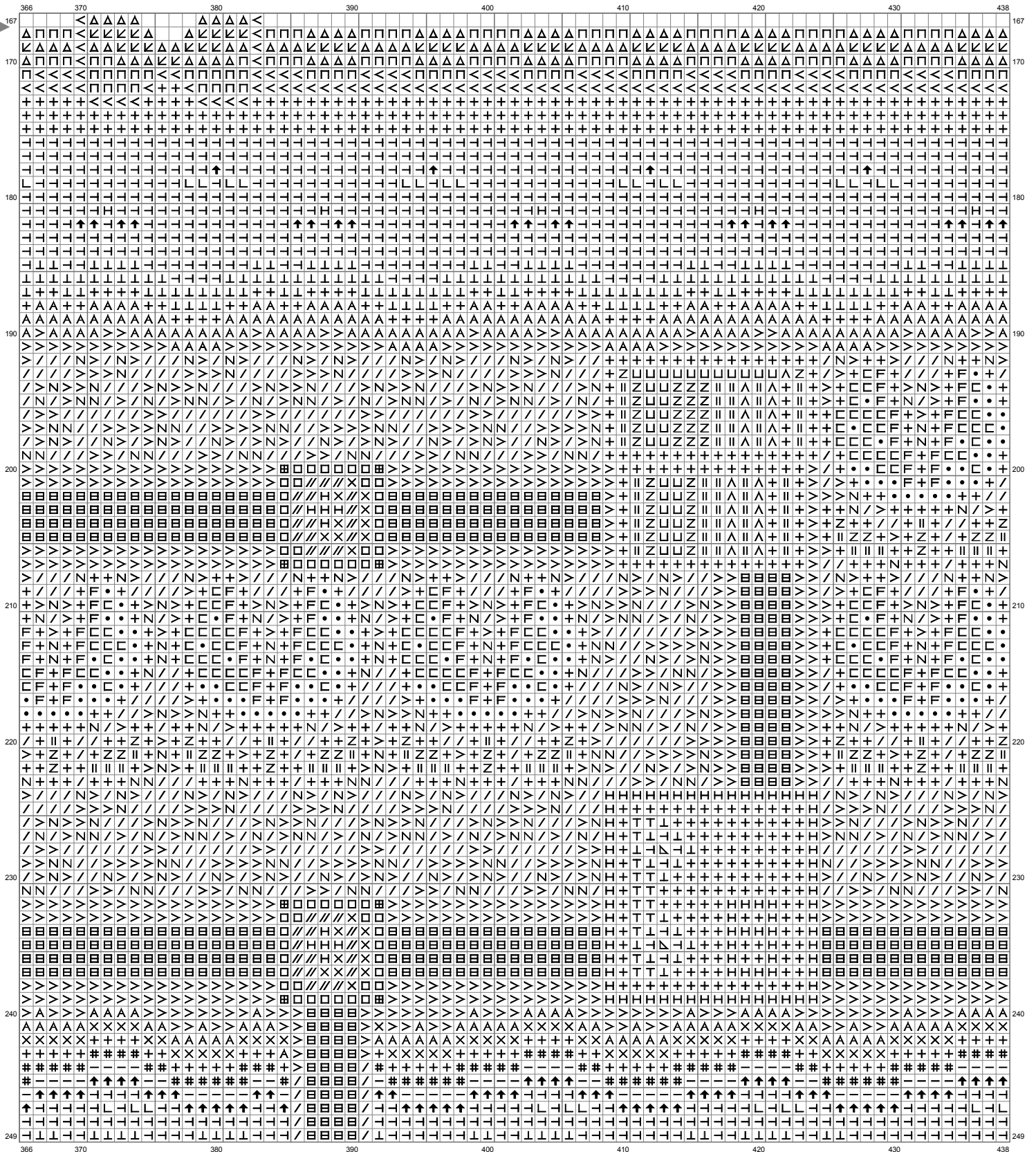
(This chart is printed using KG-Chart LE for Cross Stitch.)

Untitled

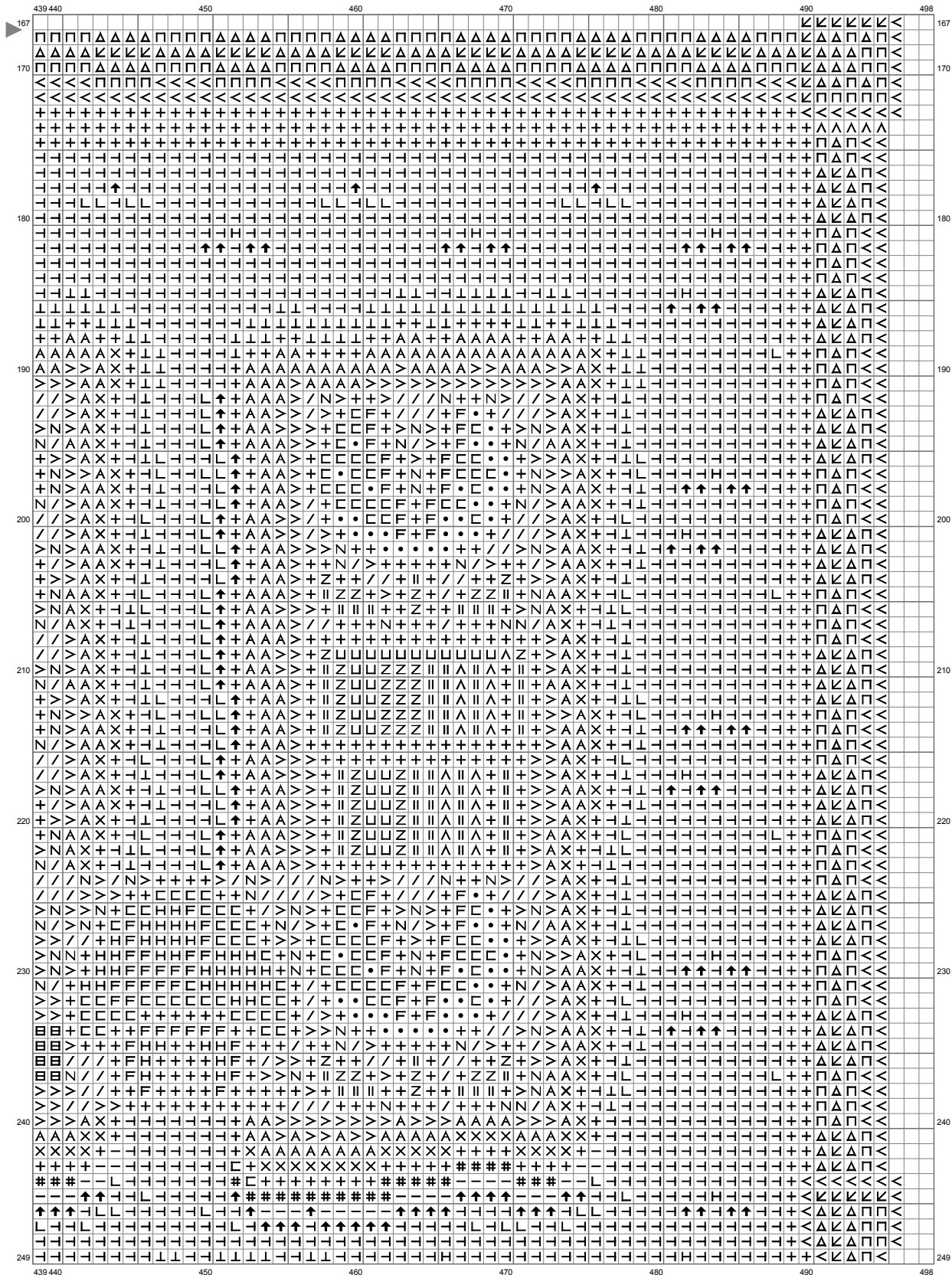


(This chart is printed using KG-Chart LE for Cross Stitch.)

Untitled

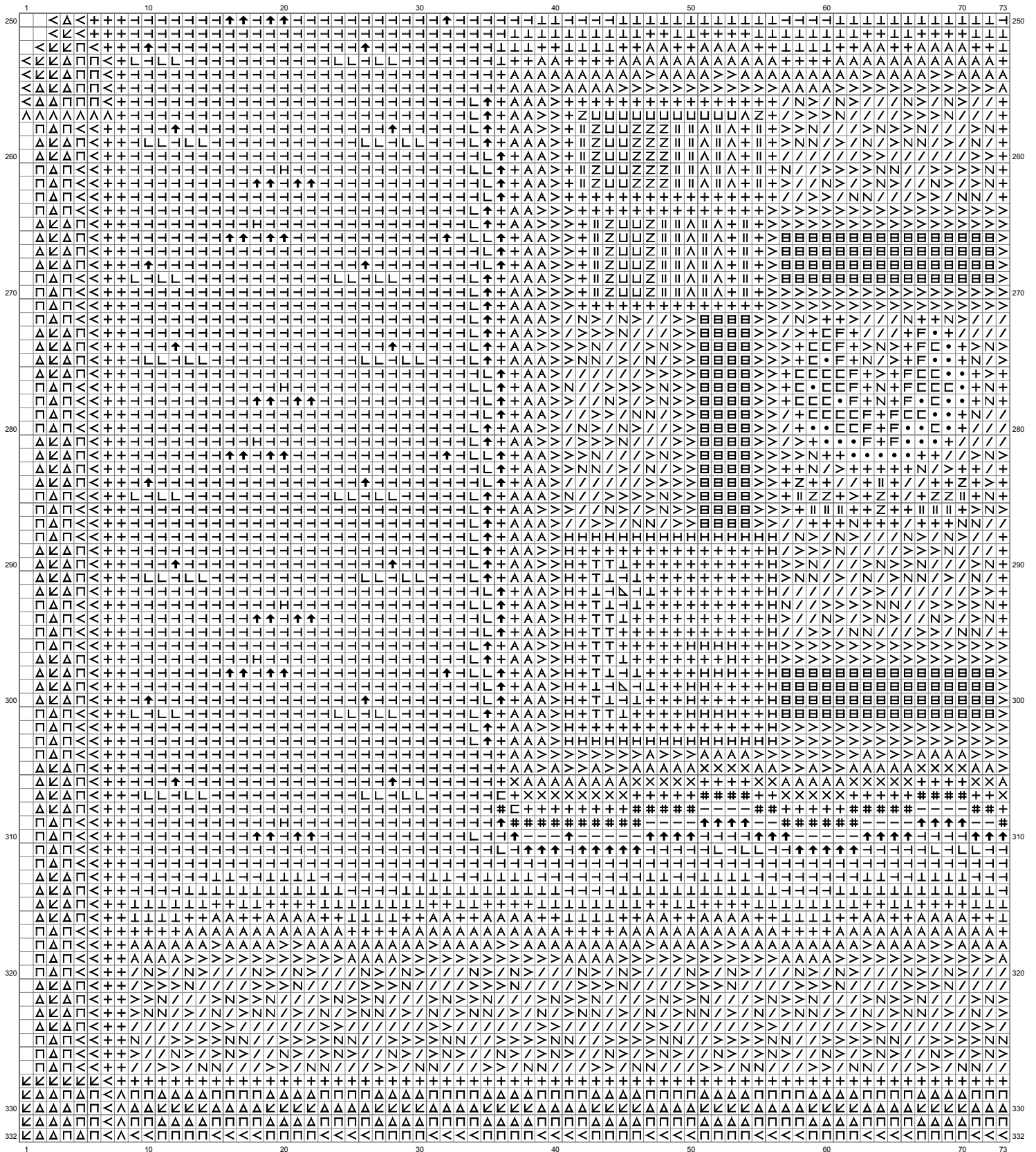


Untitled



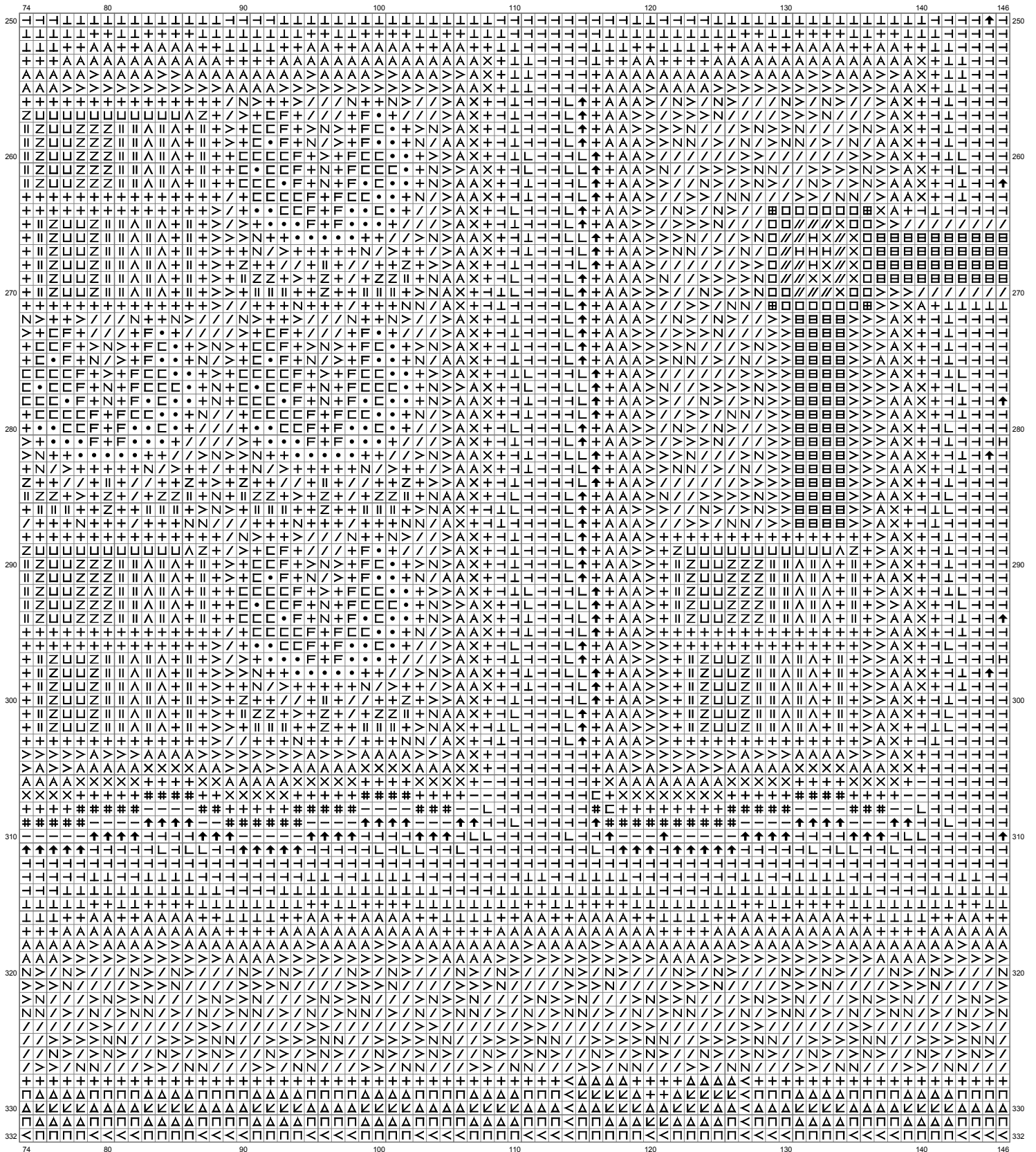
(This chart is printed using KG-Chart LE for Cross Stitch.)

Untitled



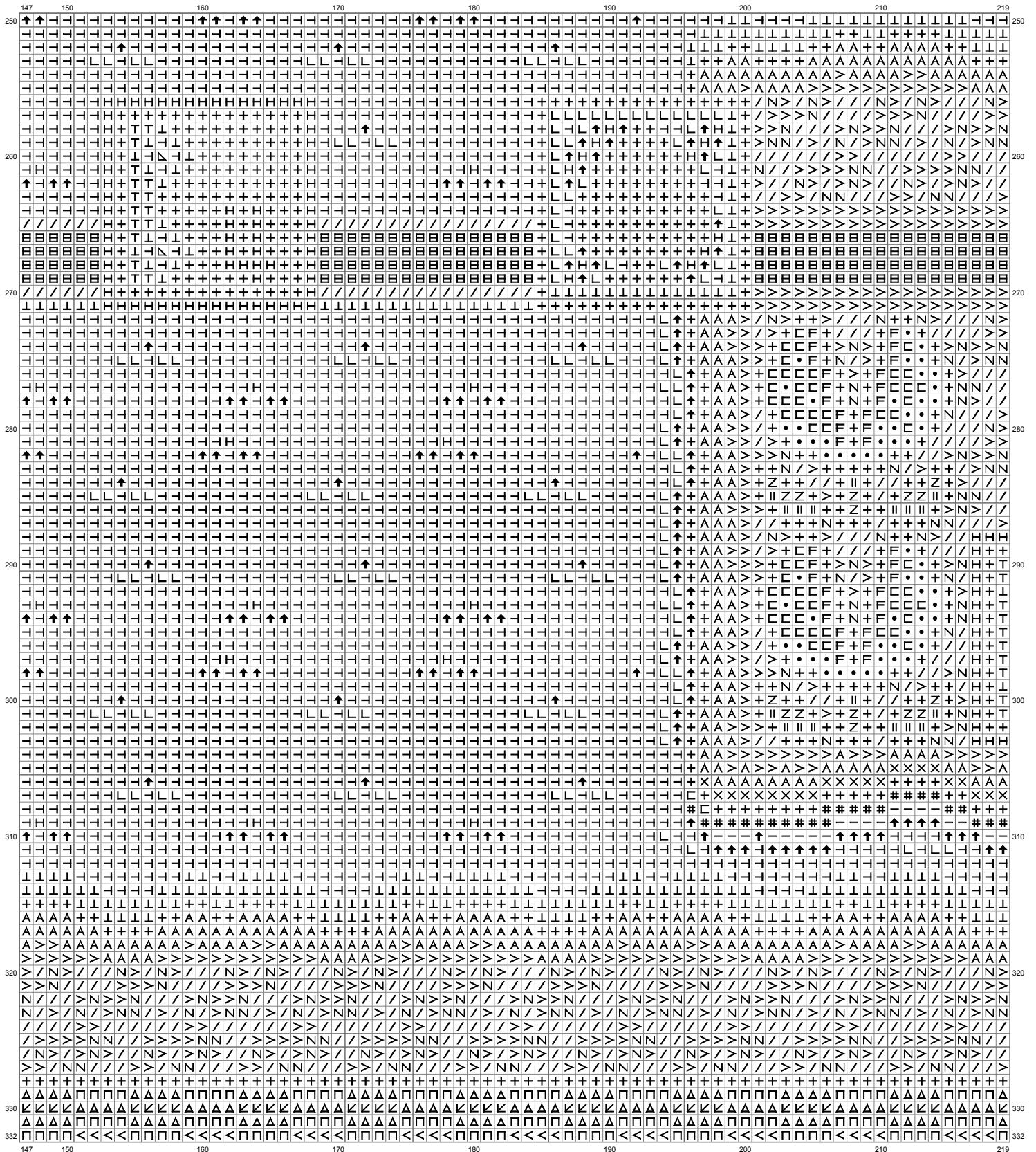
(This chart is printed using KG-Chart LE for Cross Stitch.)

Untitled



(This chart is printed using KG-Chart LE for Cross Stitch.)

Untitled

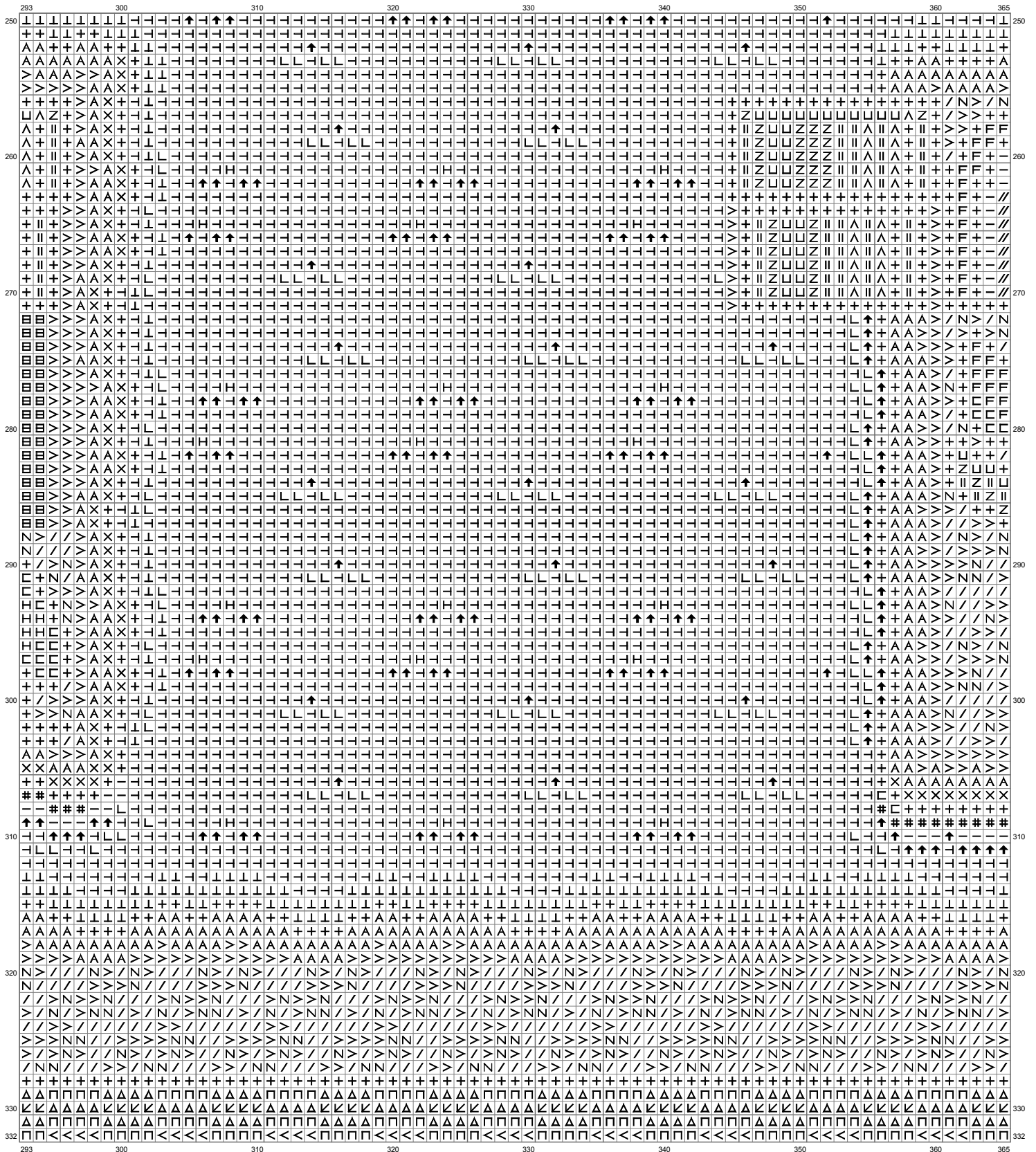


(This chart is printed using KG-Chart LE for Cross Stitch.)

250

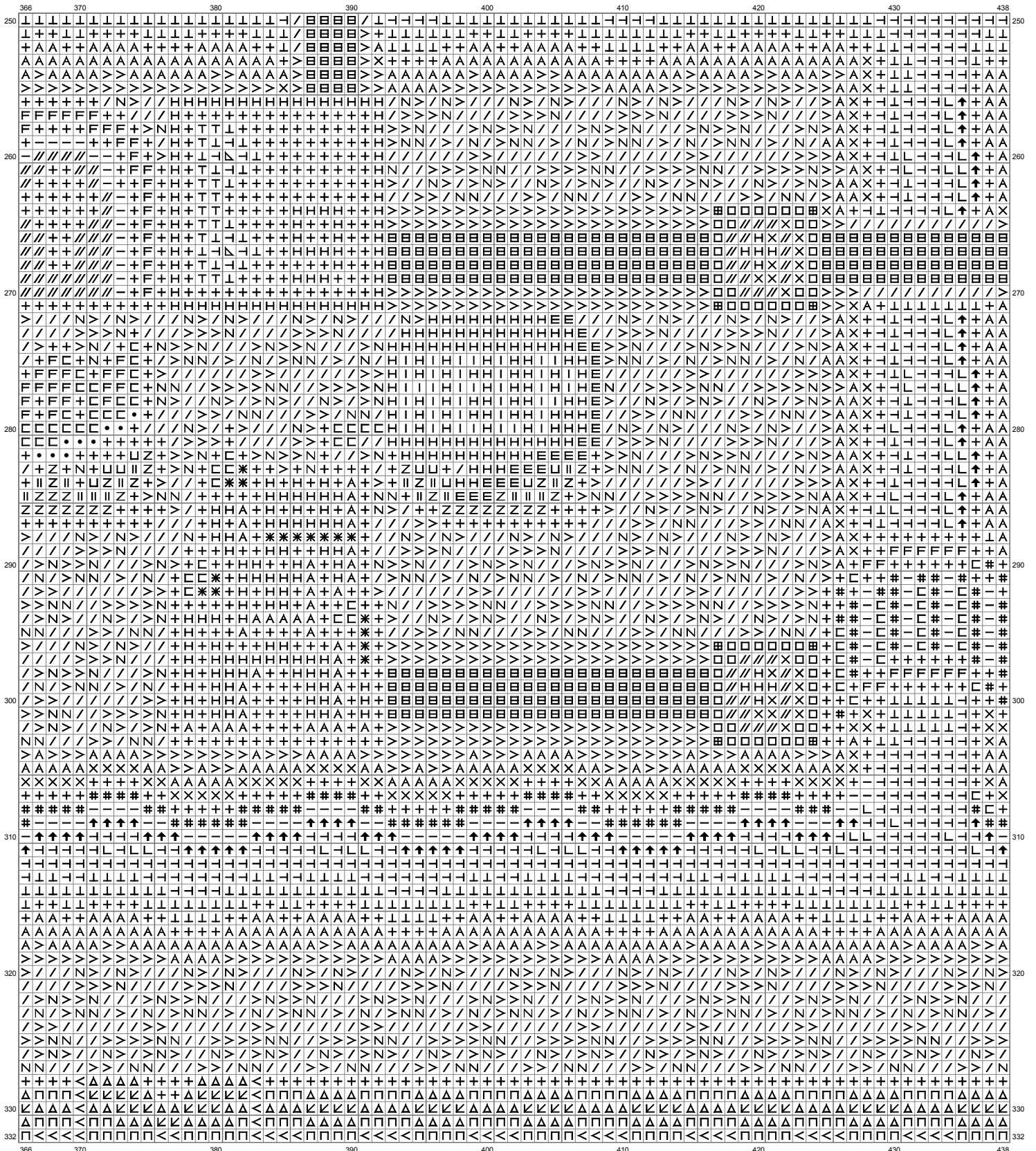


Untitled



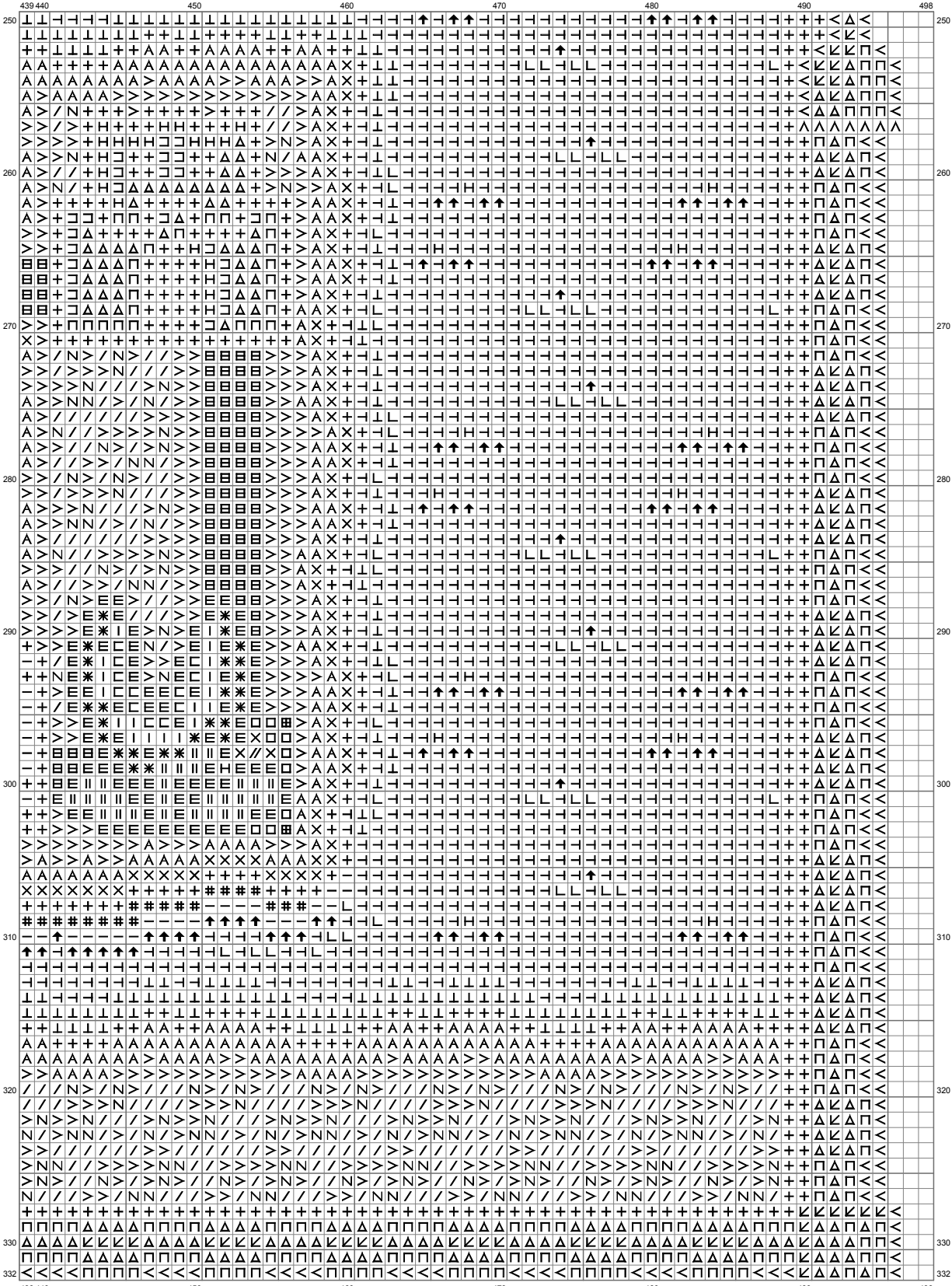
(This chart is printed using KG-Chart LE for Cross Stitch.)

Untitled



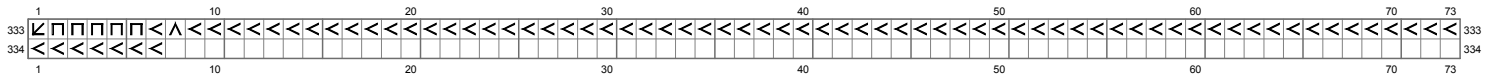
(This chart is printed using KG-Chart LE for Cross Stitch.)

Untitled



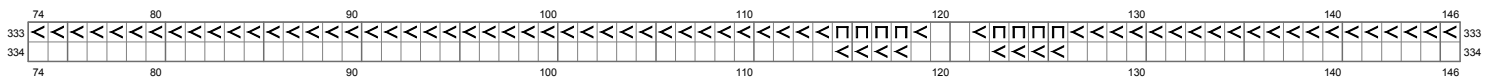
(This chart is printed using KG-Chart LE for Cross Stitch.)

Untitled



(This chart is printed using KG-Chart LE for Cross Stitch.)

Untitled



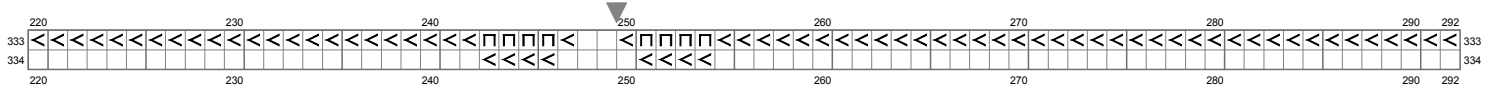
(This chart is printed using KG-Chart LE for Cross Stitch.)

Untitled



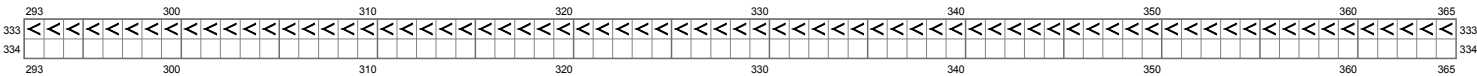
(This chart is printed using KG-Chart LE for Cross Stitch.)

Untitled



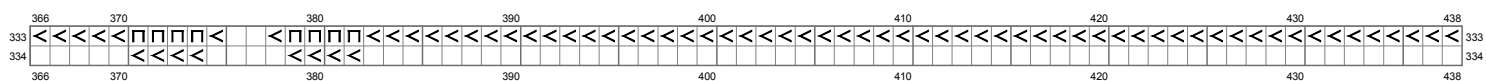
(This chart is printed using KG-Chart LE for Cross Stitch.)

Untitled



(This chart is printed using KG-Chart LE for Cross Stitch.)

Untitled



(This chart is printed using KG-Chart LE for Cross Stitch.)

Untitled



(This chart is printed using KG-Chart LE for Cross Stitch.)

Stitch Count:498w x 334h // Cloth:Aida Cloth's Color:White

Finished Size:140.54 cm x 94.26 cm (18 ct./inch) // Total 36 Colors

Color Table (DMC)

Cross Stitch

	310	(30352 ct)
	934	(200 ct)
	938	(270 ct)
	918	(825 ct)
	869	(1347 ct)
	817	(146 ct)
	349	(75 ct)
	975	(718 ct)
	347	(908 ct)
	910	(7542 ct)
	319	(402 ct)
	988	(1220 ct)
	367	(2000 ct)
	906	(21740 ct)
	989	(5795 ct)
	704	(813 ct)
	703	(2810 ct)
	3852	(259 ct)
	680	(5088 ct)
	3853	(1809 ct)
	972	(834 ct)
	3842	(144 ct)
	3843	(27700 ct)
	3845	(20141 ct)
	502	(2004 ct)
	563	(2036 ct)
	966	(9294 ct)
	156	(18 ct)
	813	(1471 ct)
	3811	(744 ct)
	827	(2185 ct)
	3023	(50 ct)
	3771	(5273 ct)
	3078	(2676 ct)
	3865	(1238 ct)
	B5200	(1363 ct)