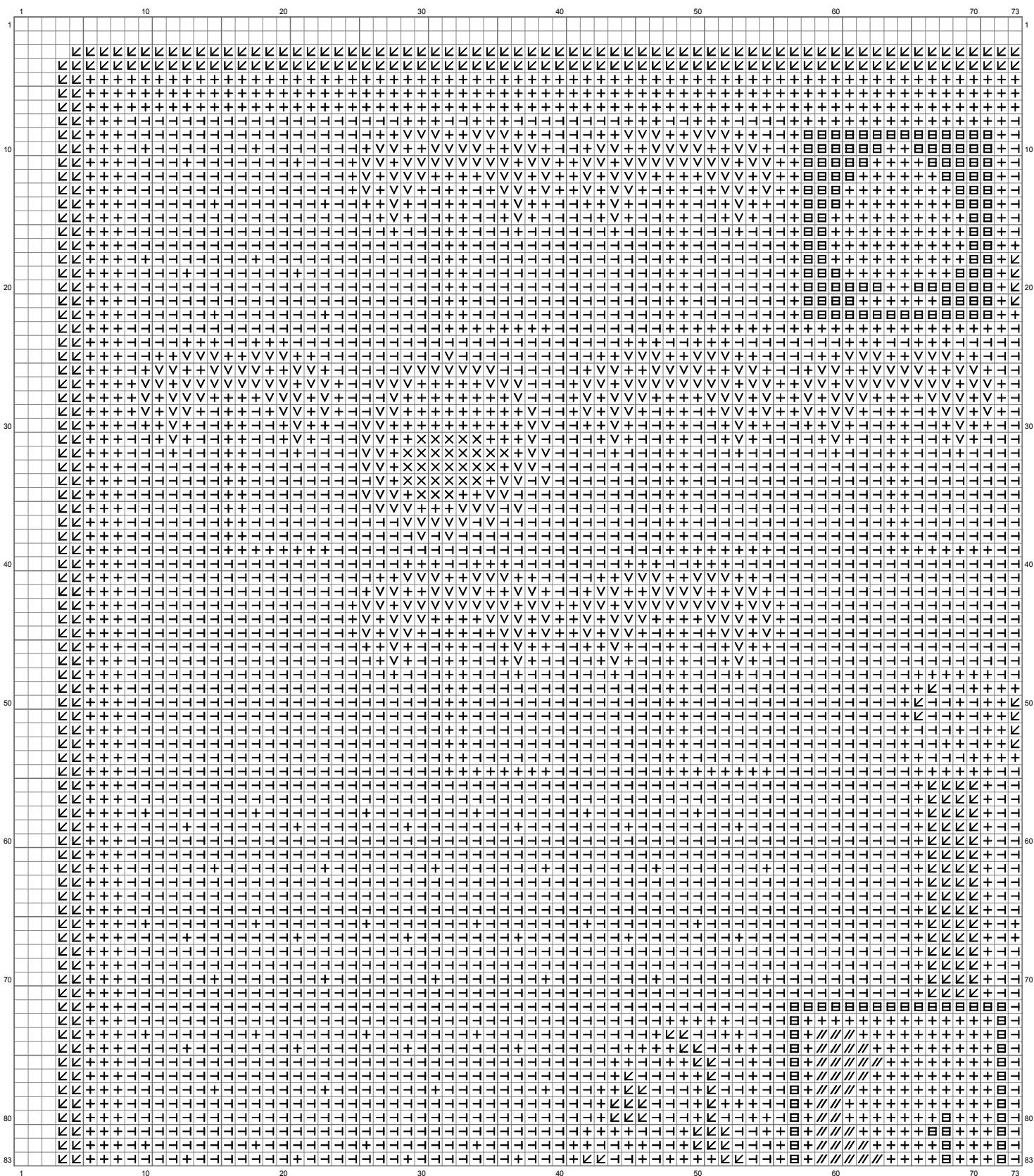
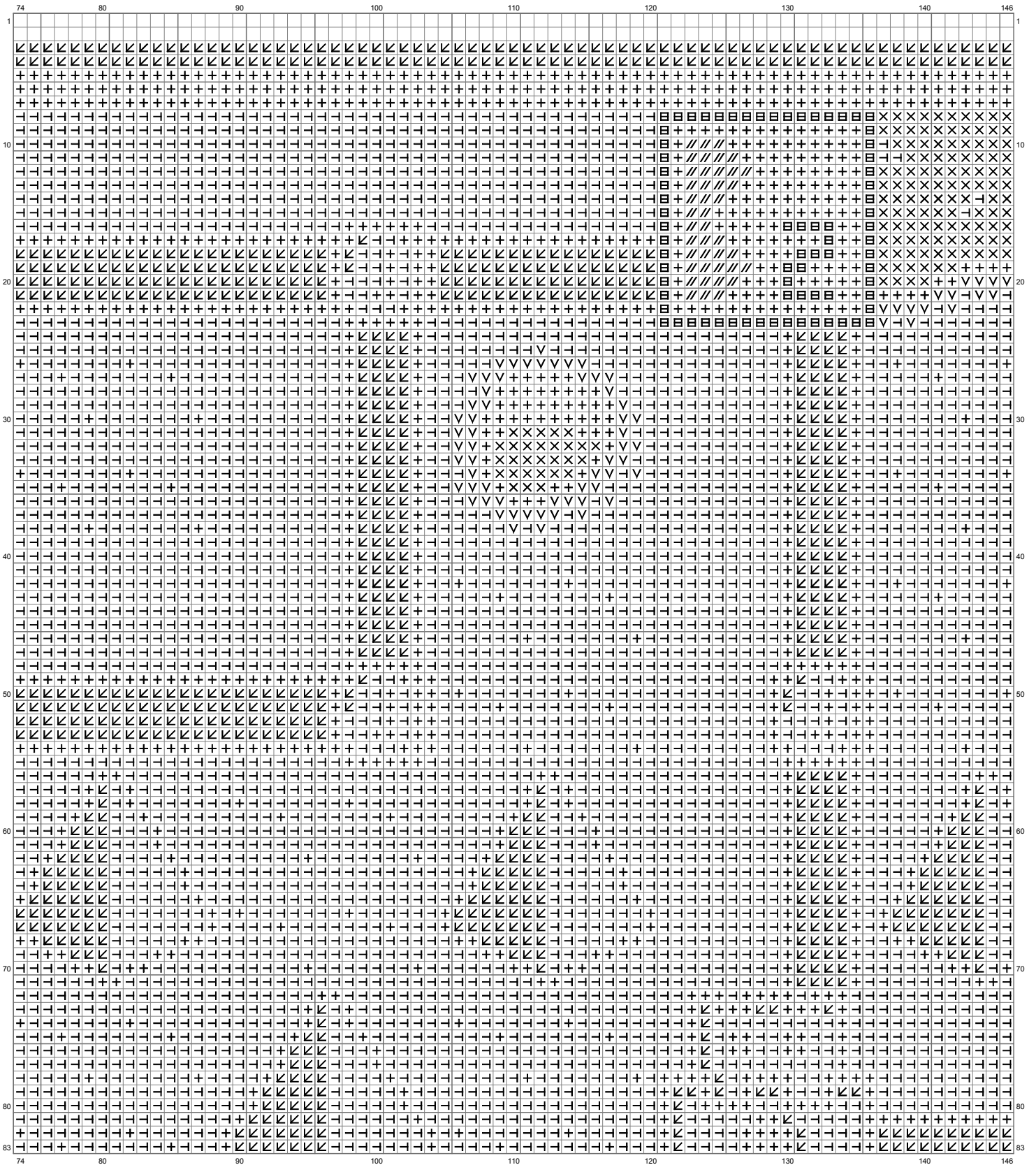


Untitled

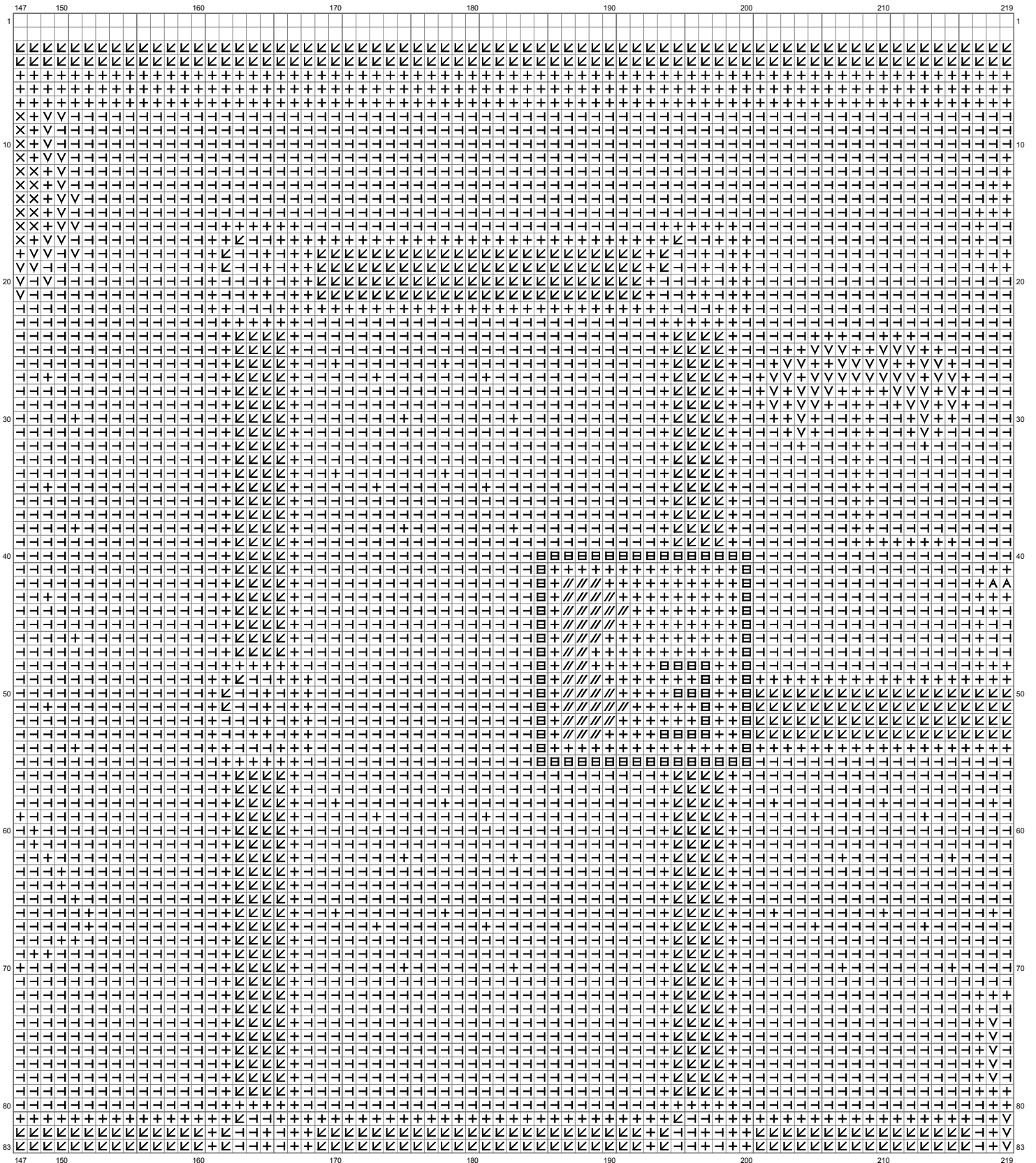


(This chart is printed using KG-Chart LE for Cross Stitch.)

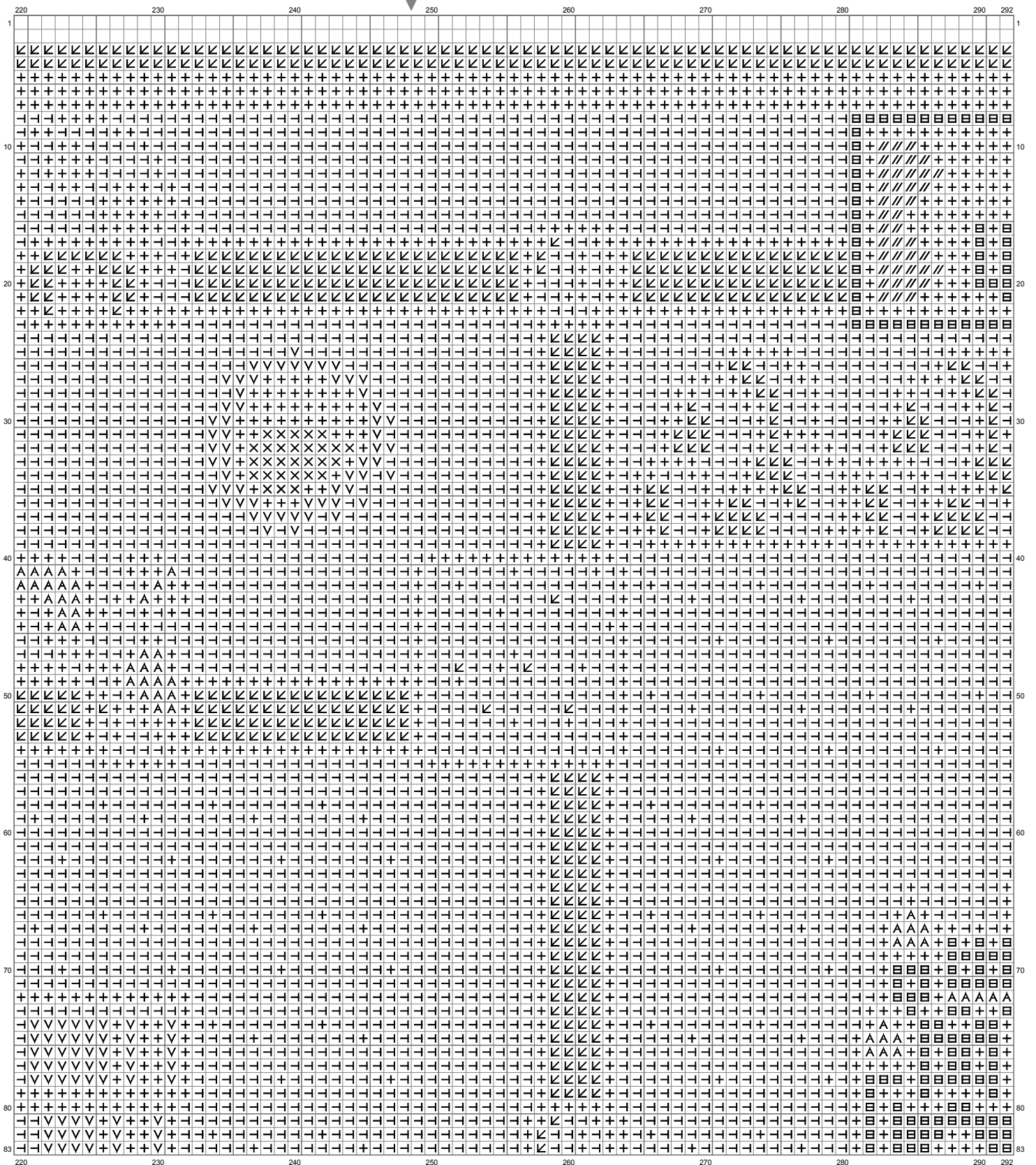
Untitled



Untitled

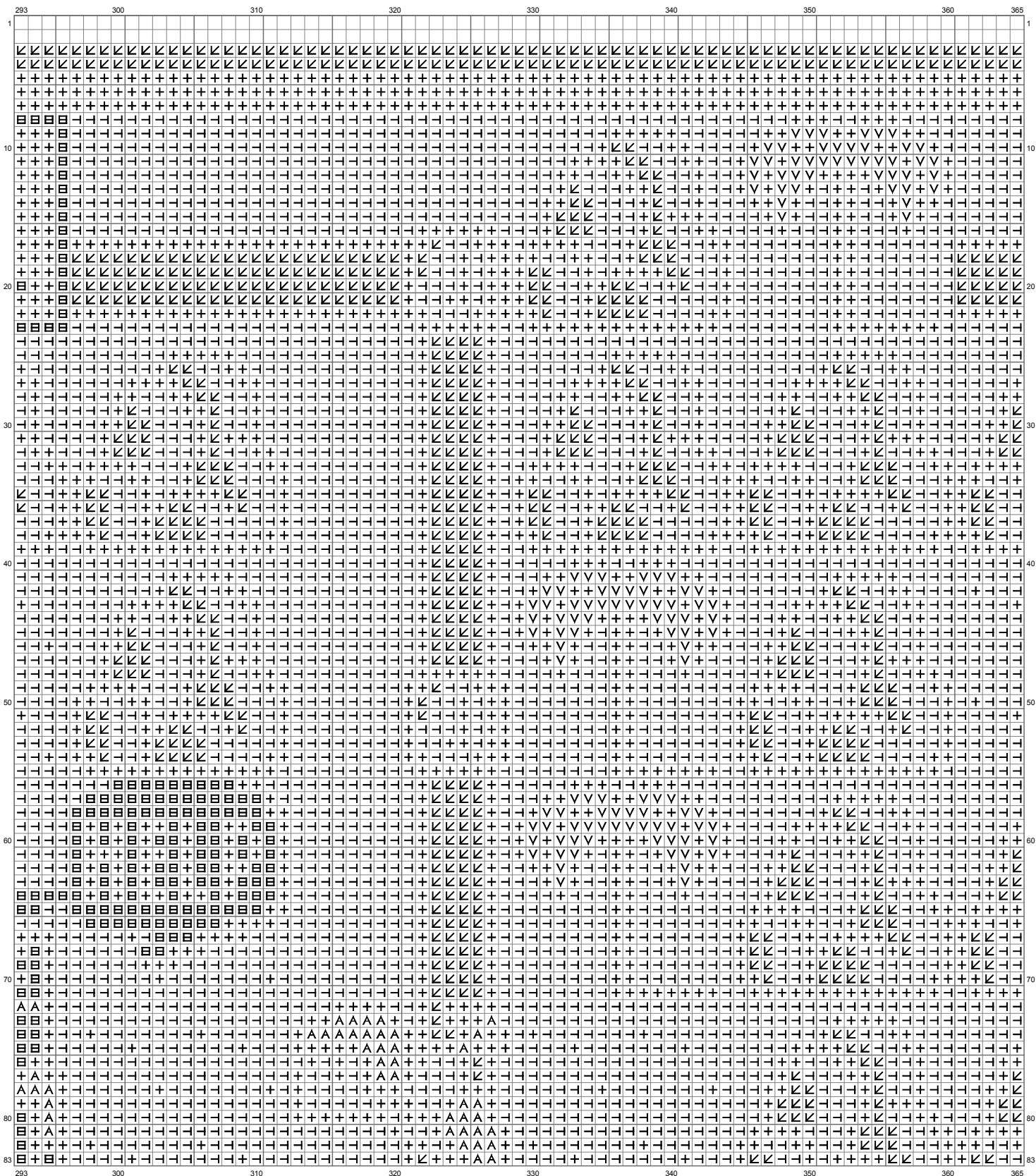


Untitled



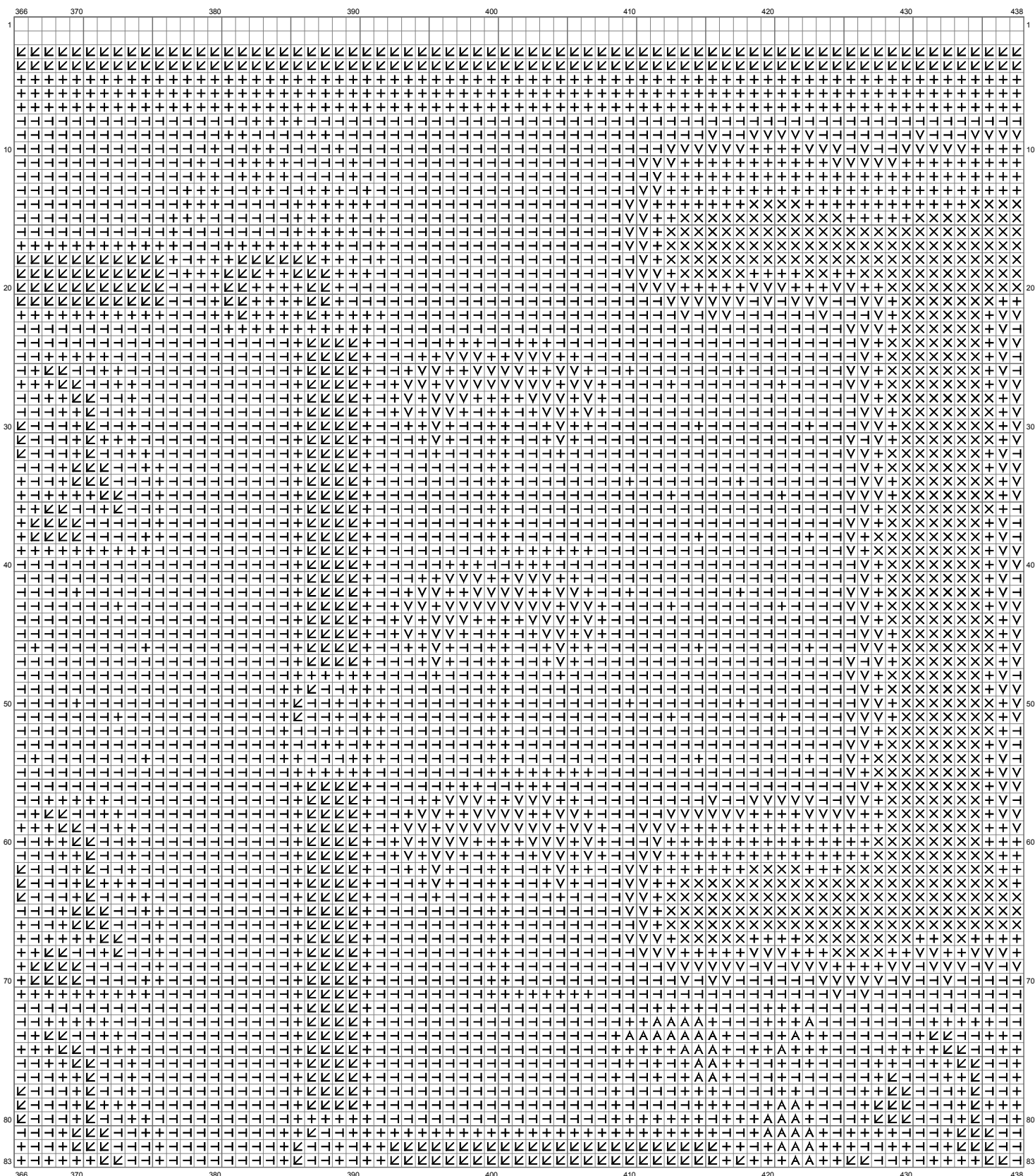
(This chart is printed using KG-Chart LE for Cross Stitch.)

Untitled

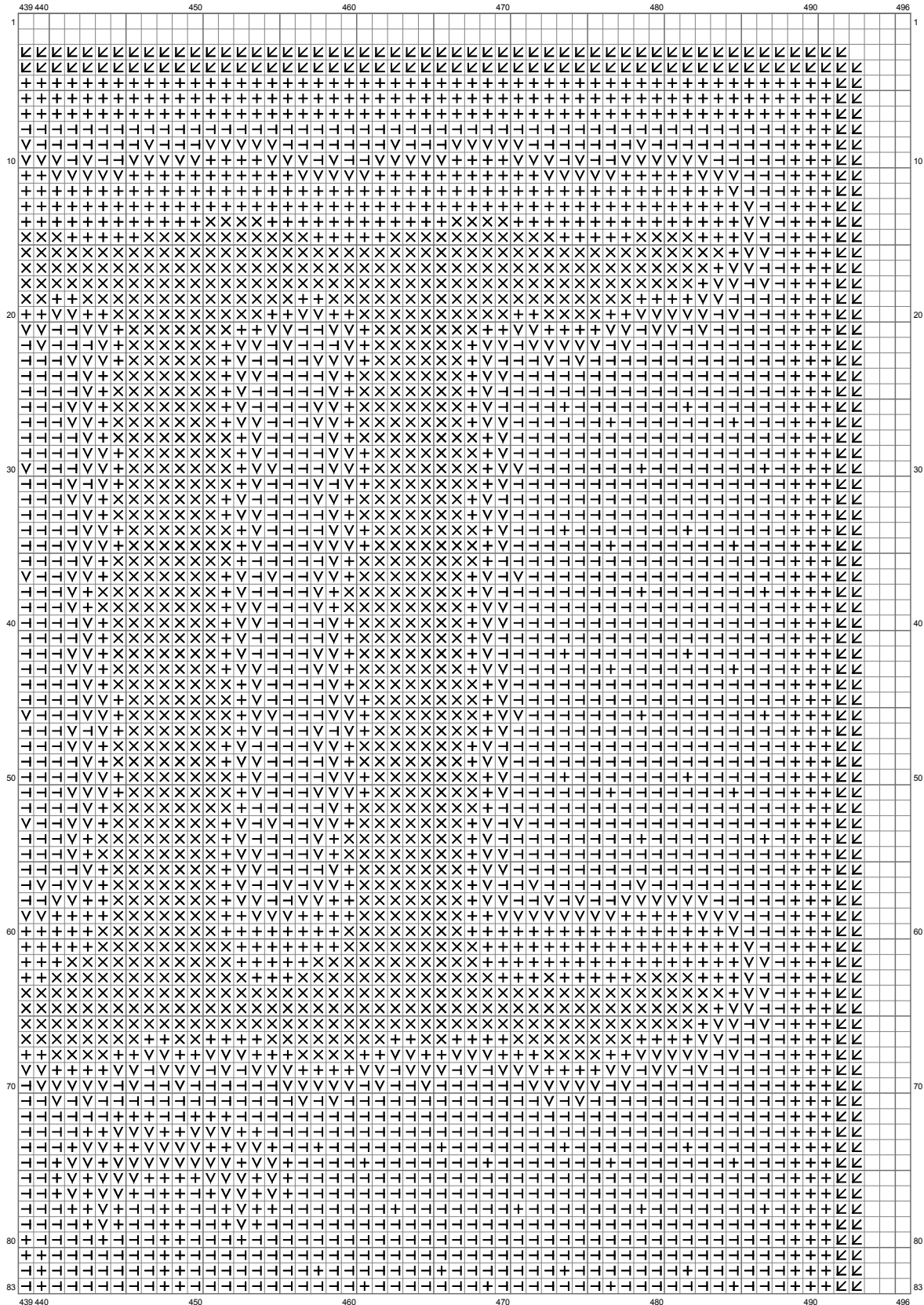


(This chart is printed using KG-Chart LE for Cross Stitch.)

Untitled

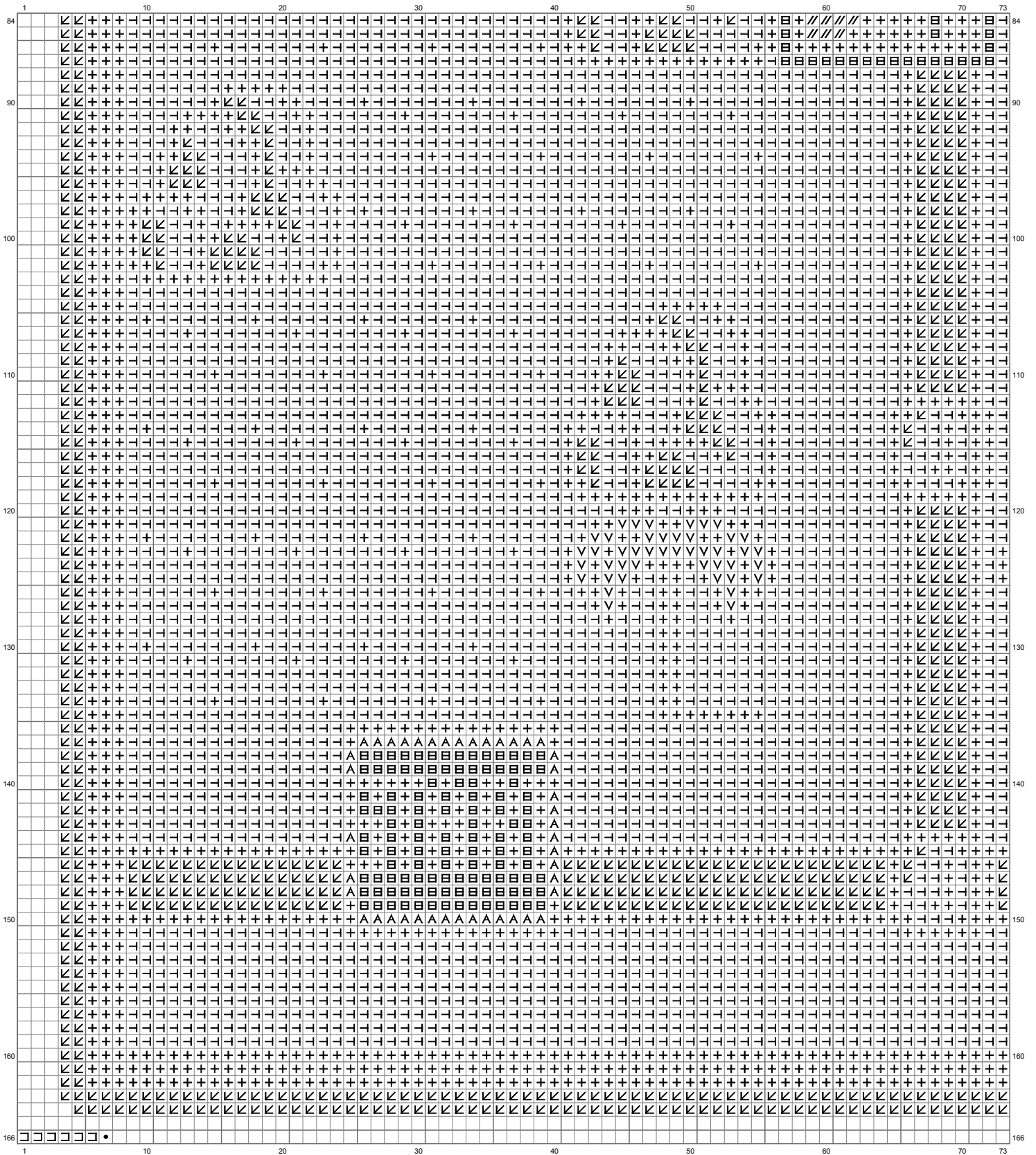


Untitled



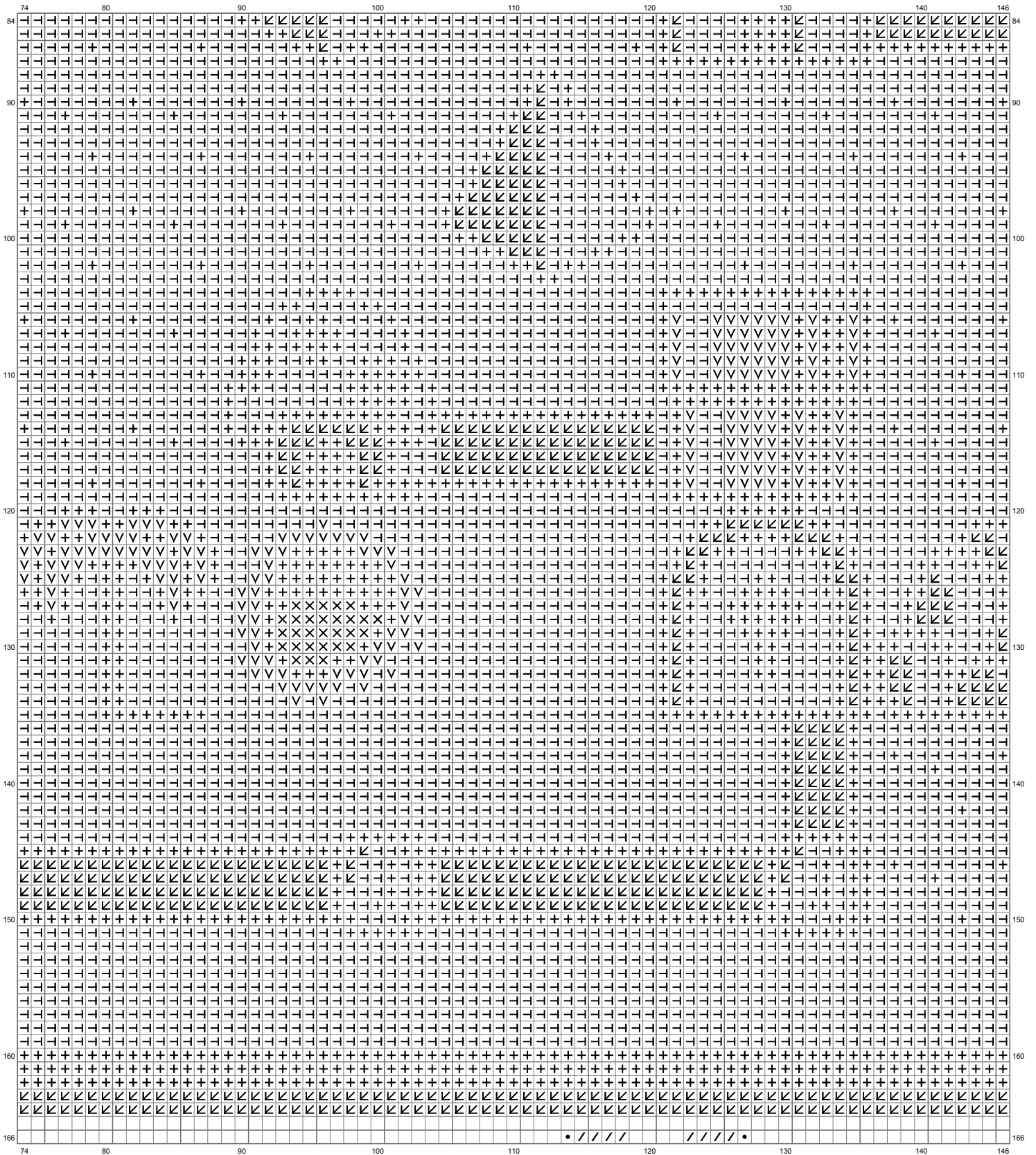
(This chart is printed using KG-Chart LE for Cross Stitch.)

Untitled



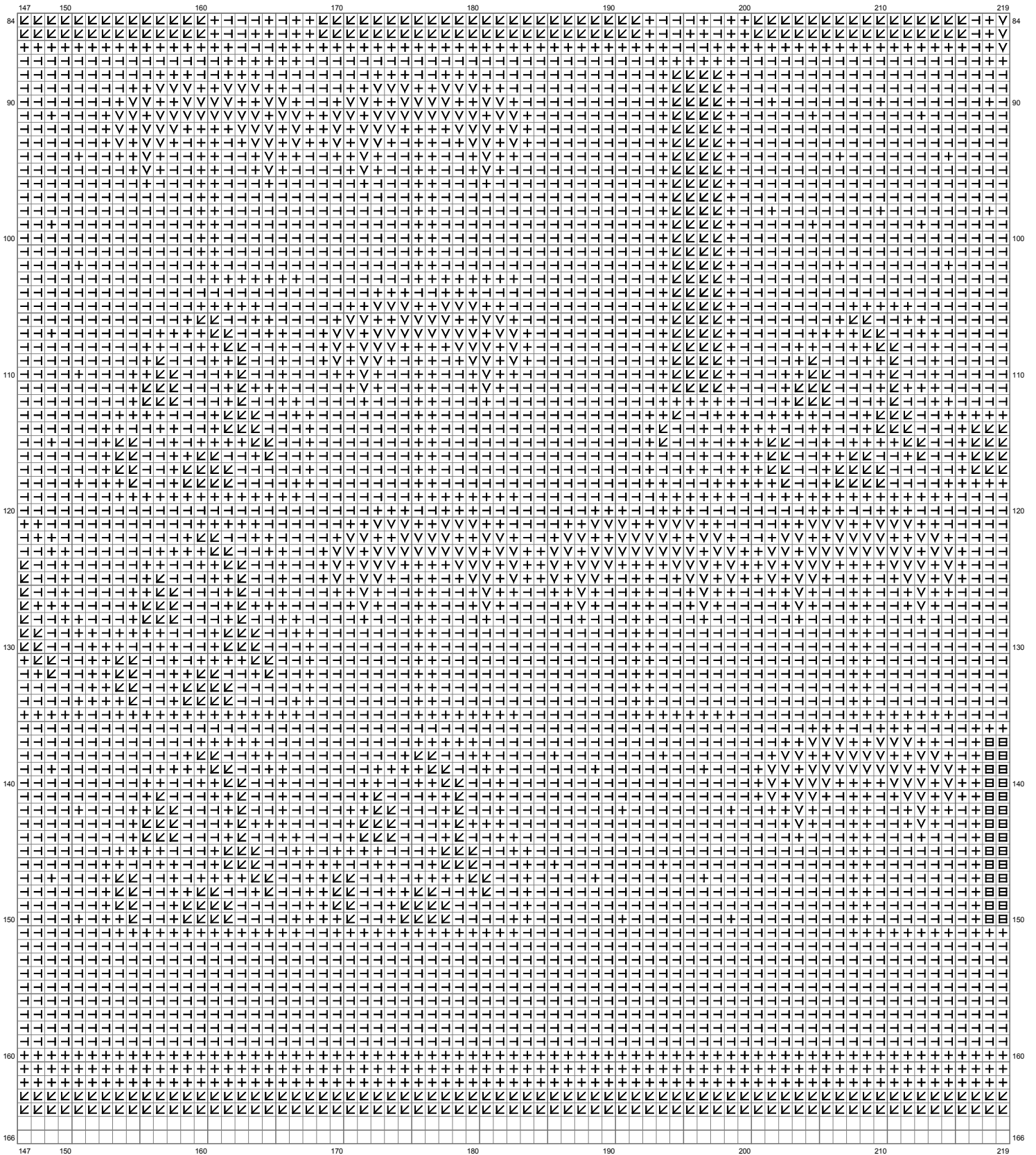
(This chart is printed using KG-Chart LE for Cross Stitch.)

Untitled



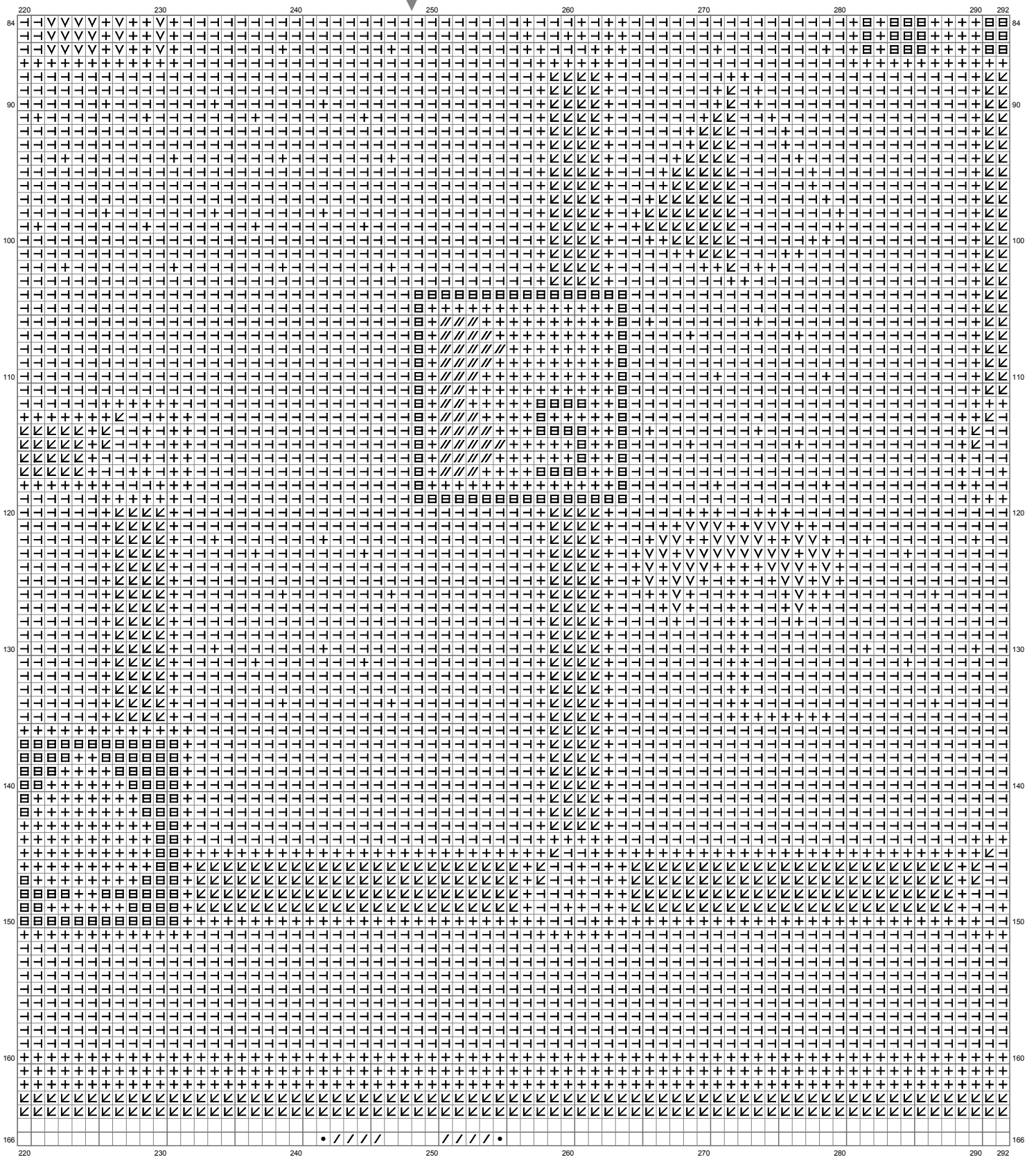
(This chart is printed using KG-Chart LE for Cross Stitch.)

Untitled



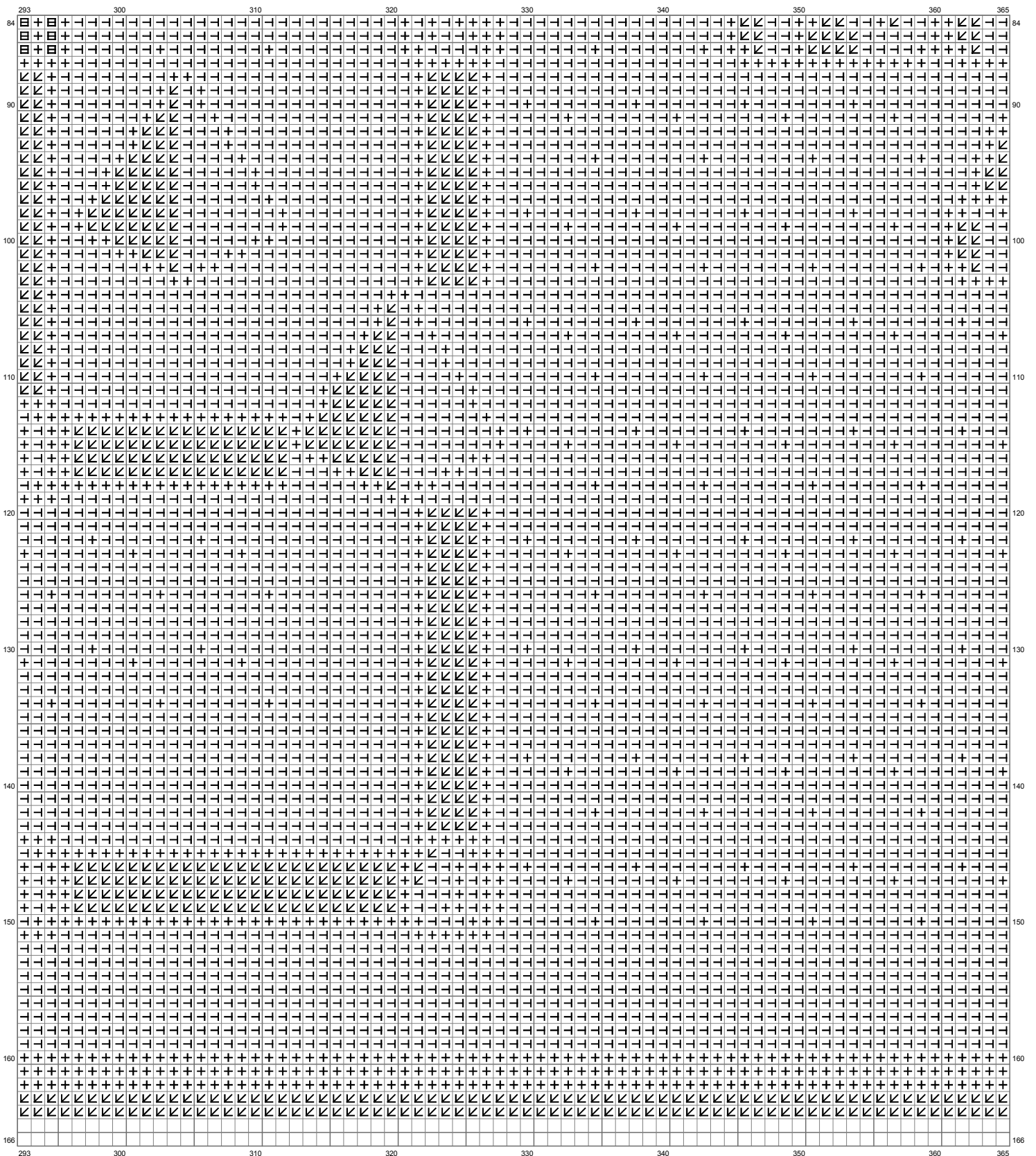
(This chart is printed using KG-Chart LE for Cross Stitch.)

Untitled



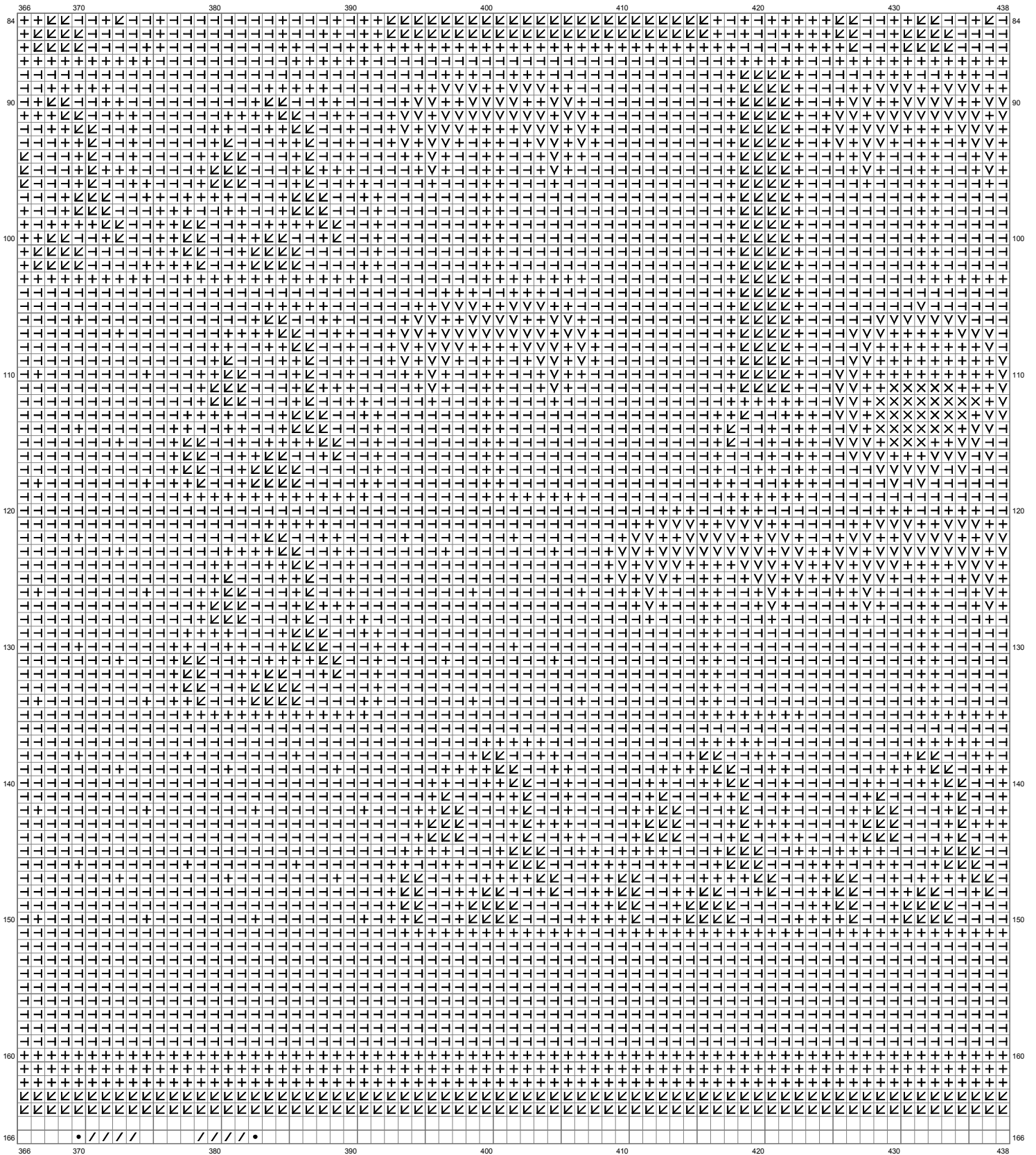
(This chart is printed using KG-Chart LE for Cross Stitch.)

Untitled

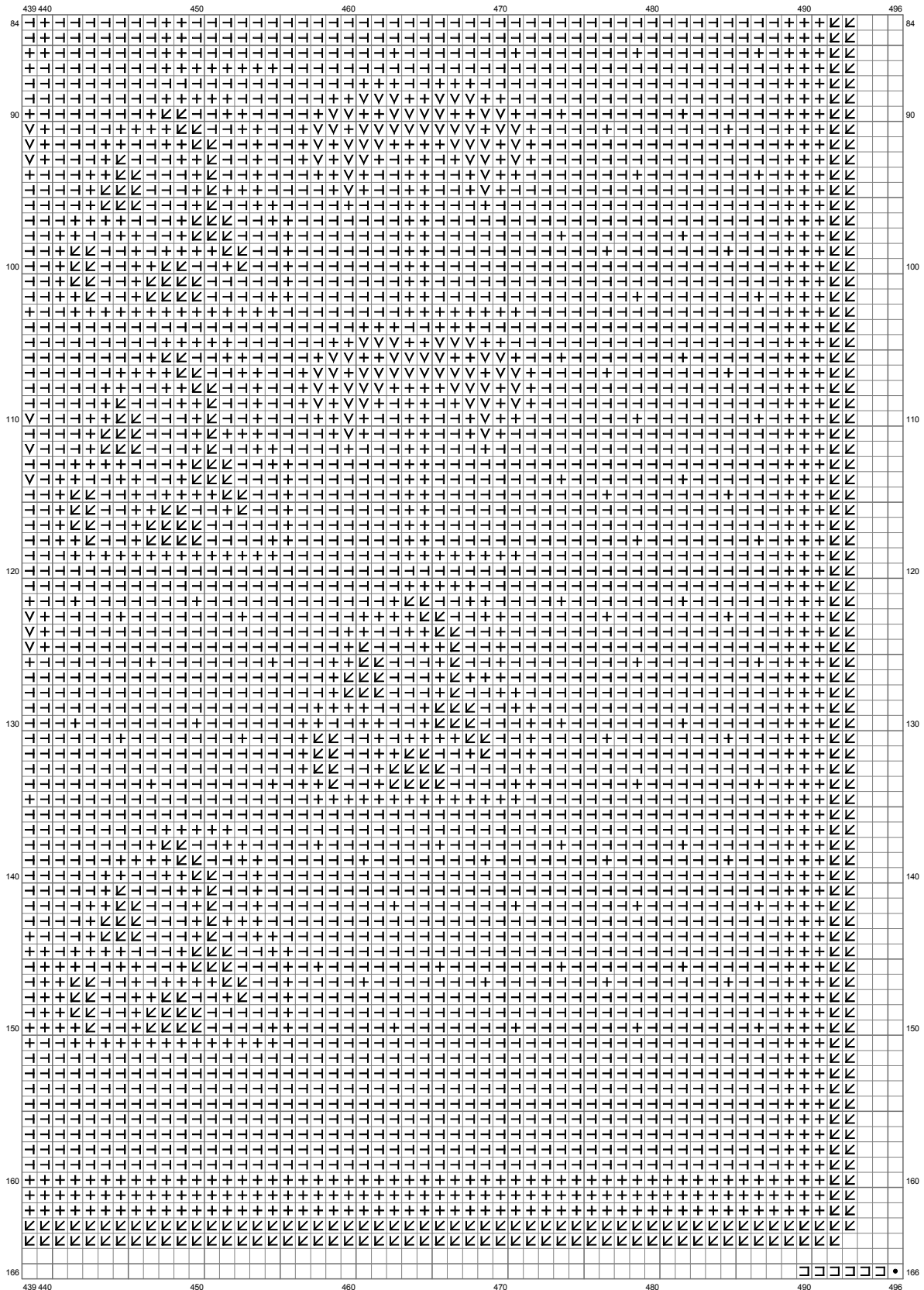


(This chart is printed using KG-Chart LE for Cross Stitch.)

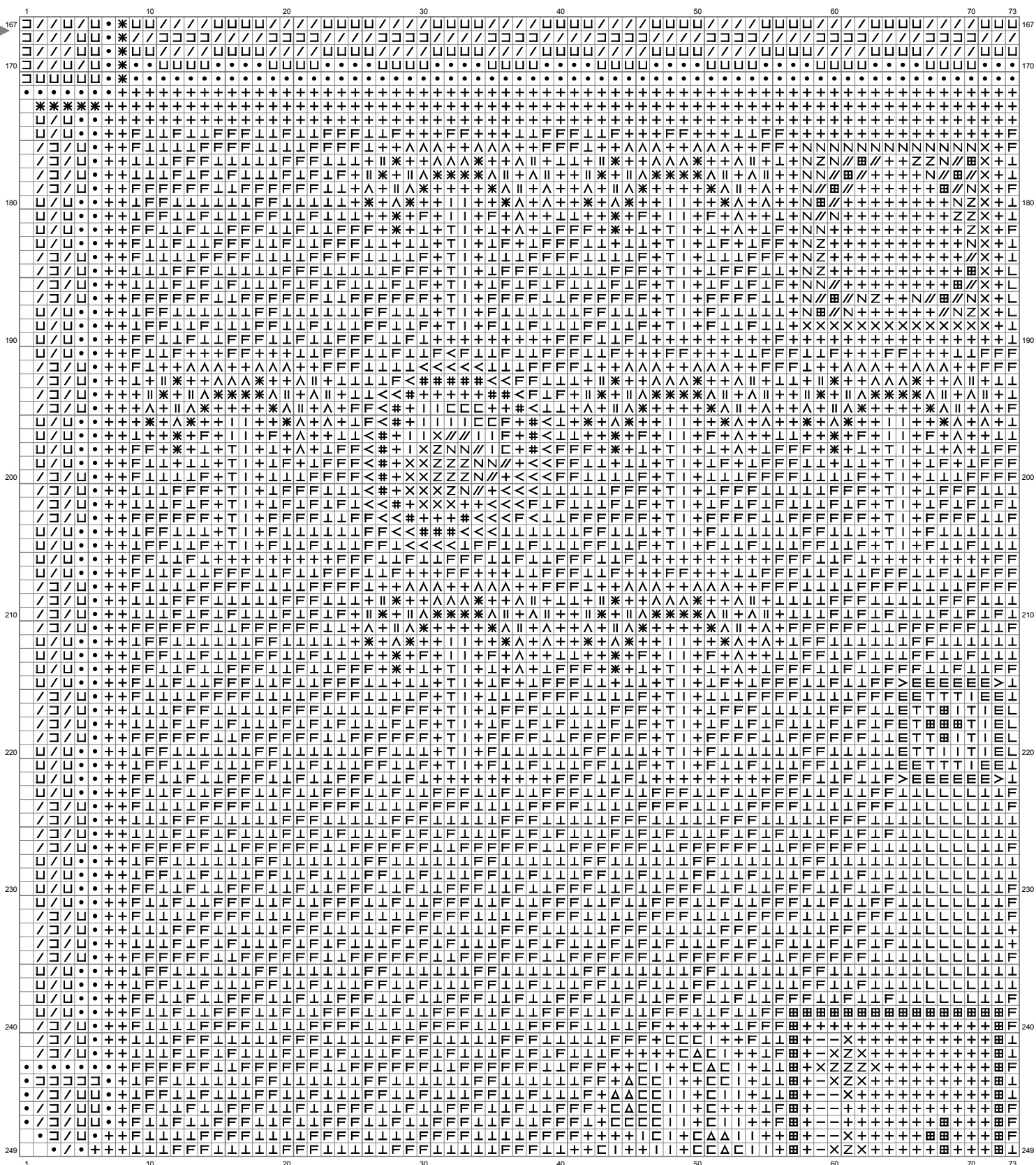
Untitled



Untitled

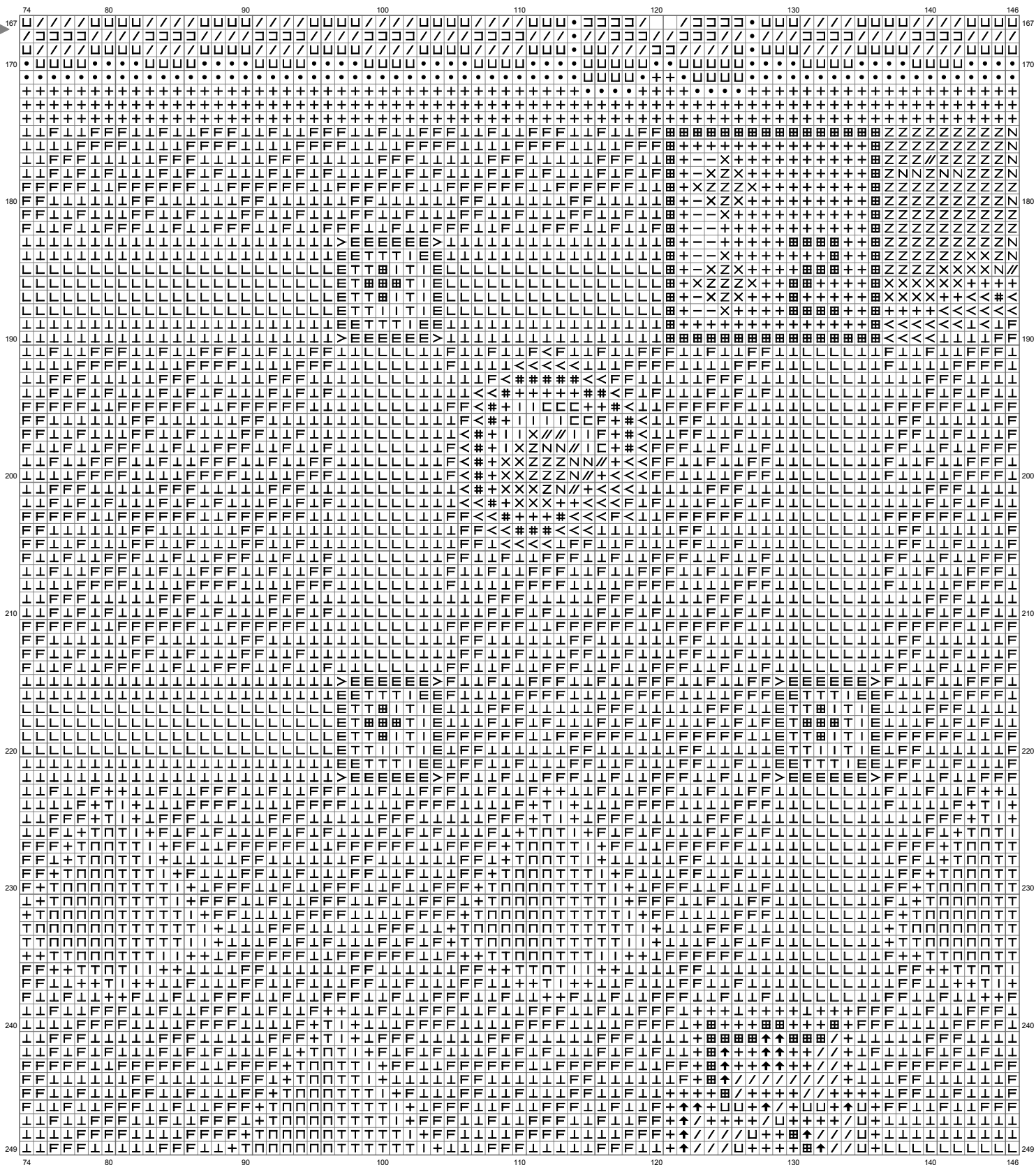


Untitled

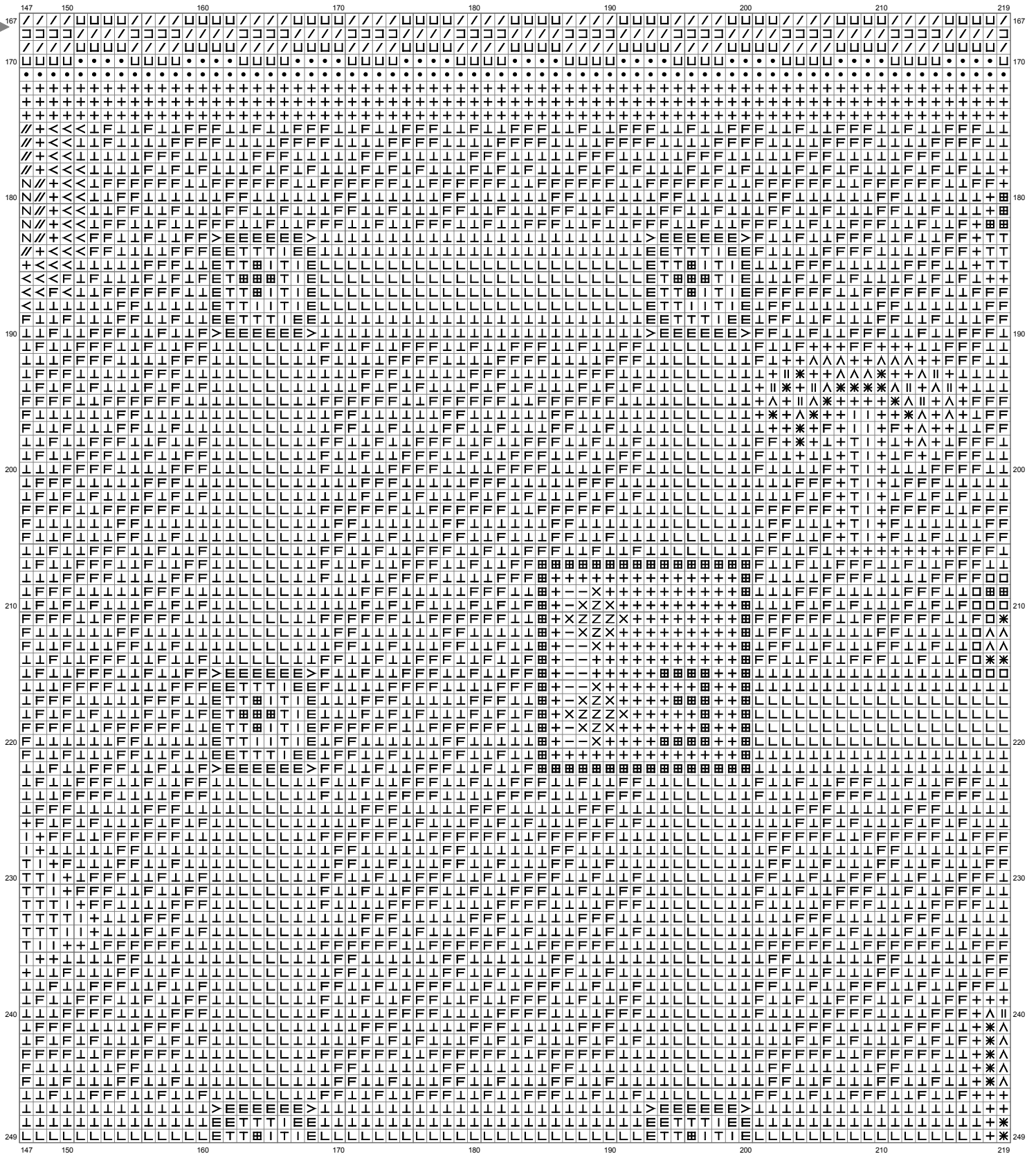


(This chart is printed using KG-Chart LE for Cross Stitch.)

Untitled

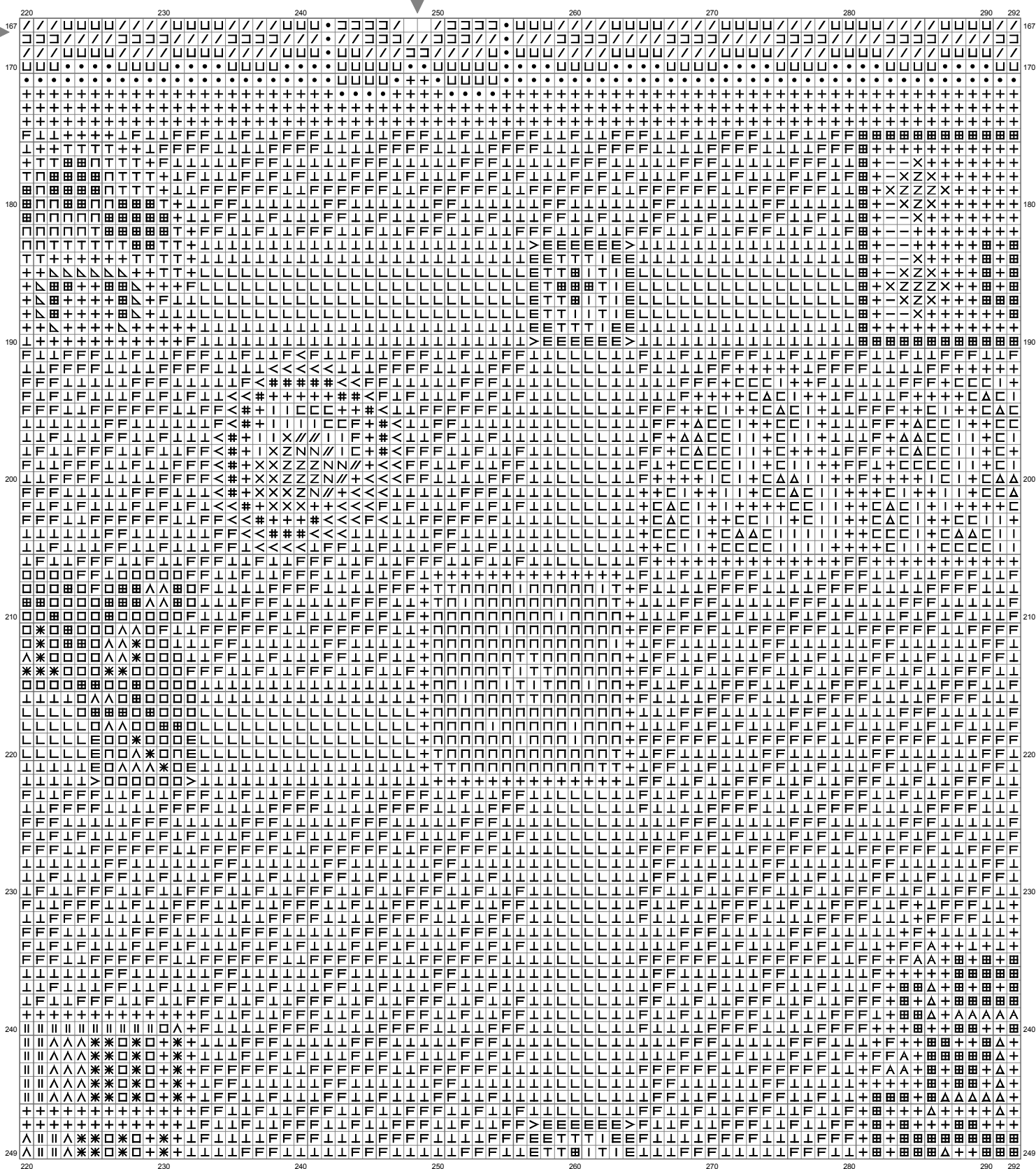


Untitled



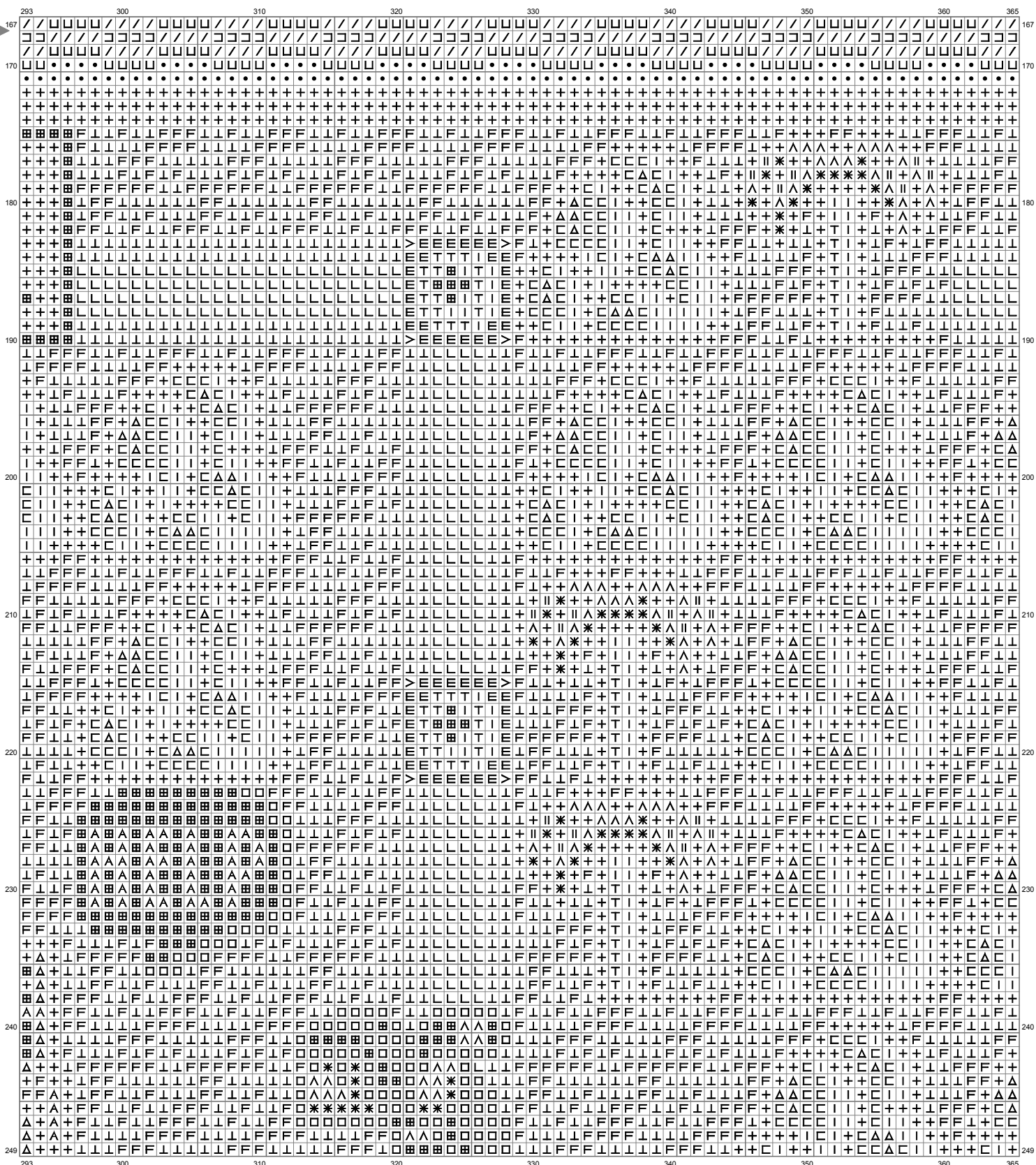
(This chart is printed using KG-Chart LE for Cross Stitch.)

Untitled



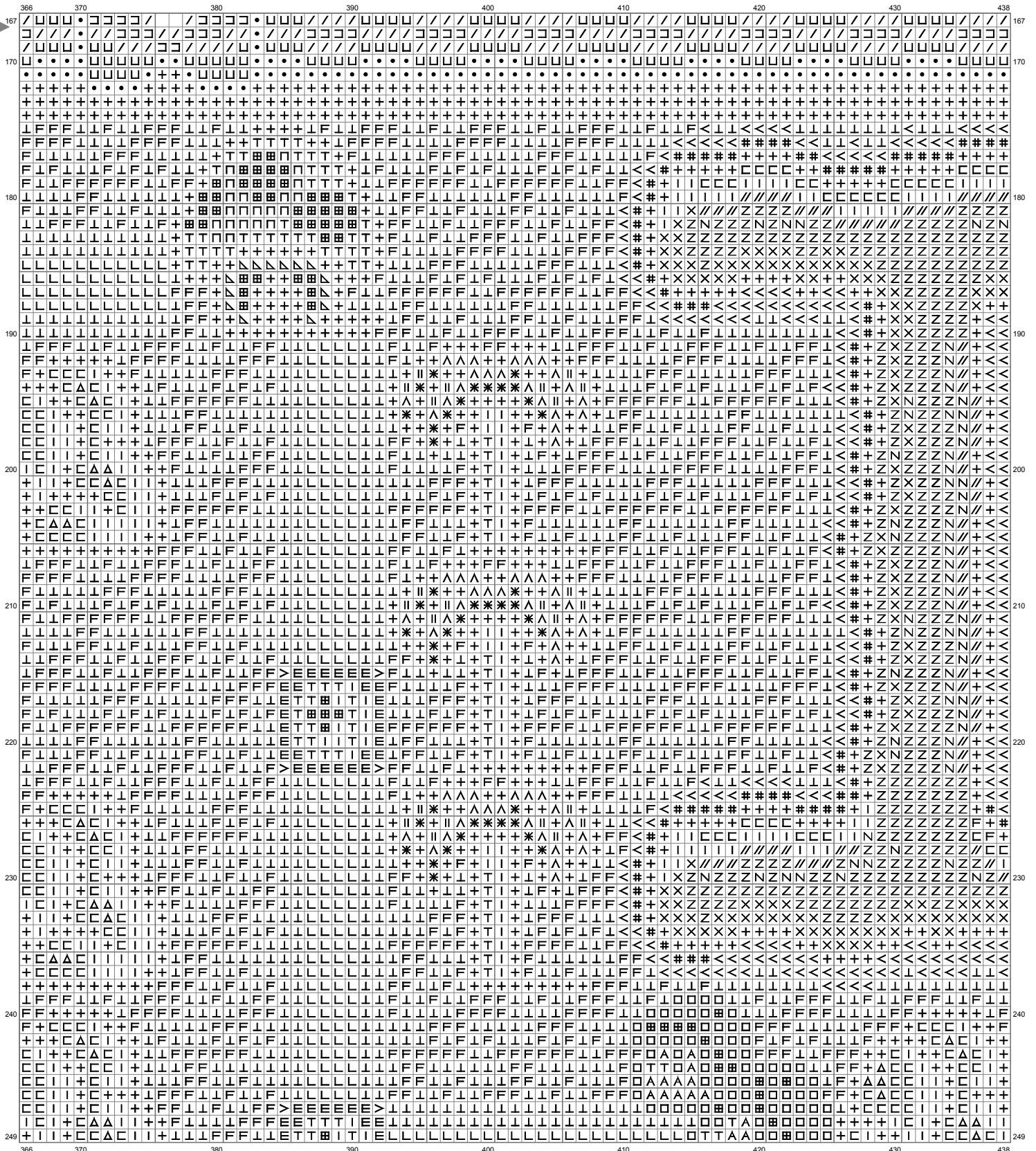
(This chart is printed using KG-Chart LE for Cross Stitch.)

Untitled



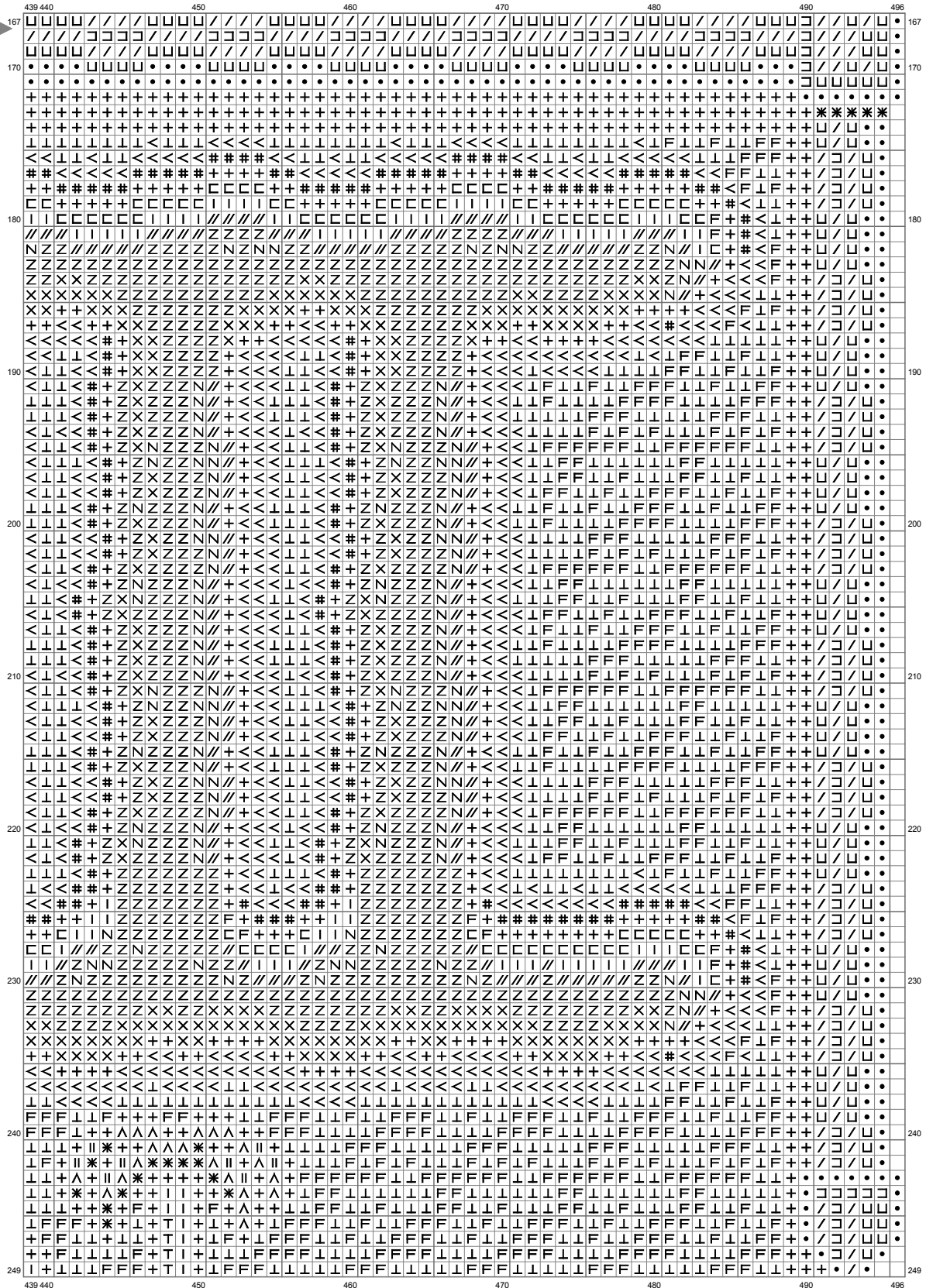
(This chart is printed using KG-Chart LE for Cross Stitch.)

Untitled



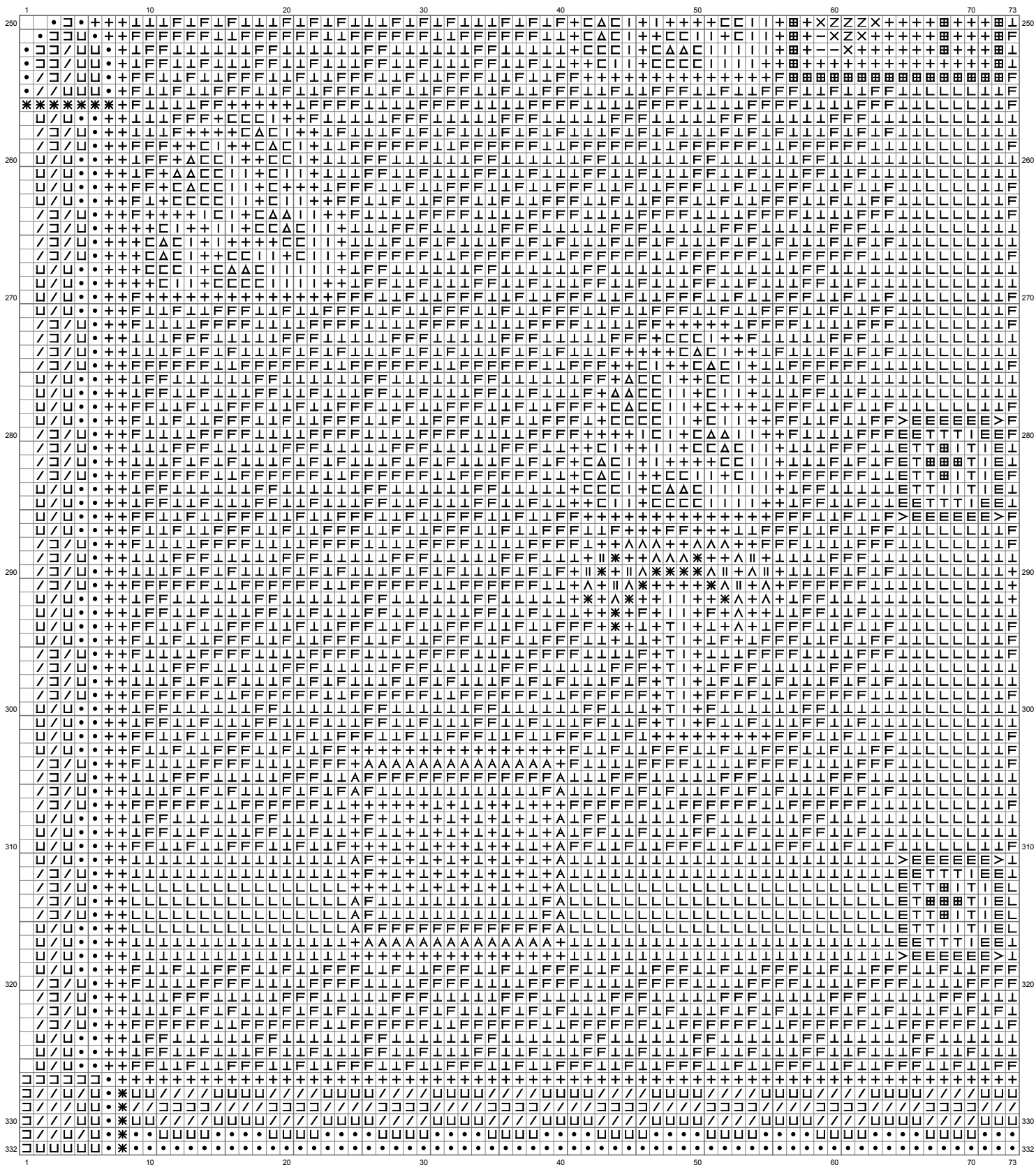
(This chart is printed using KG-Chart LE for Cross Stitch.)

Untitled



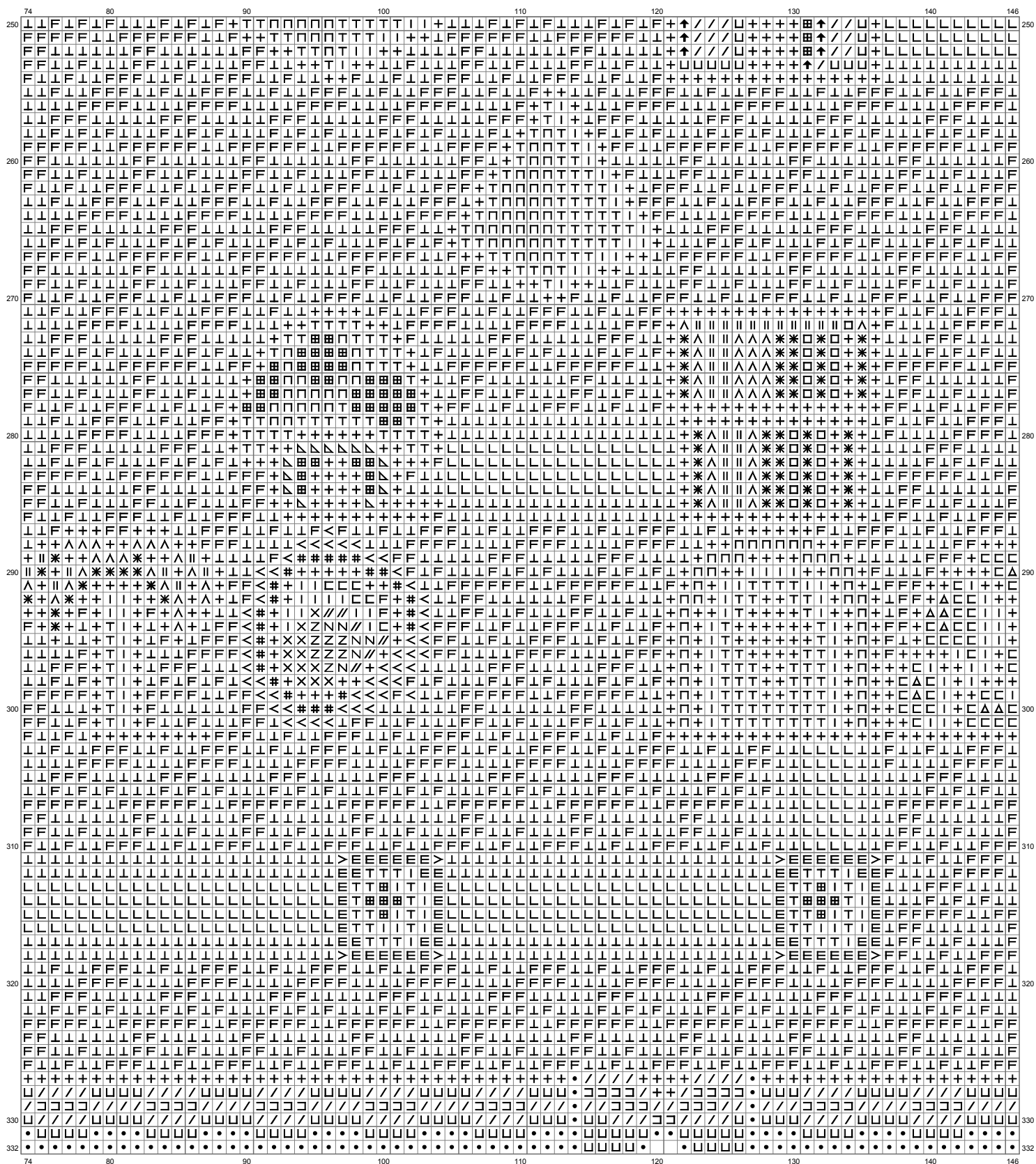
(This chart is printed using KG-Chart LE for Cross Stitch.)

Untitled



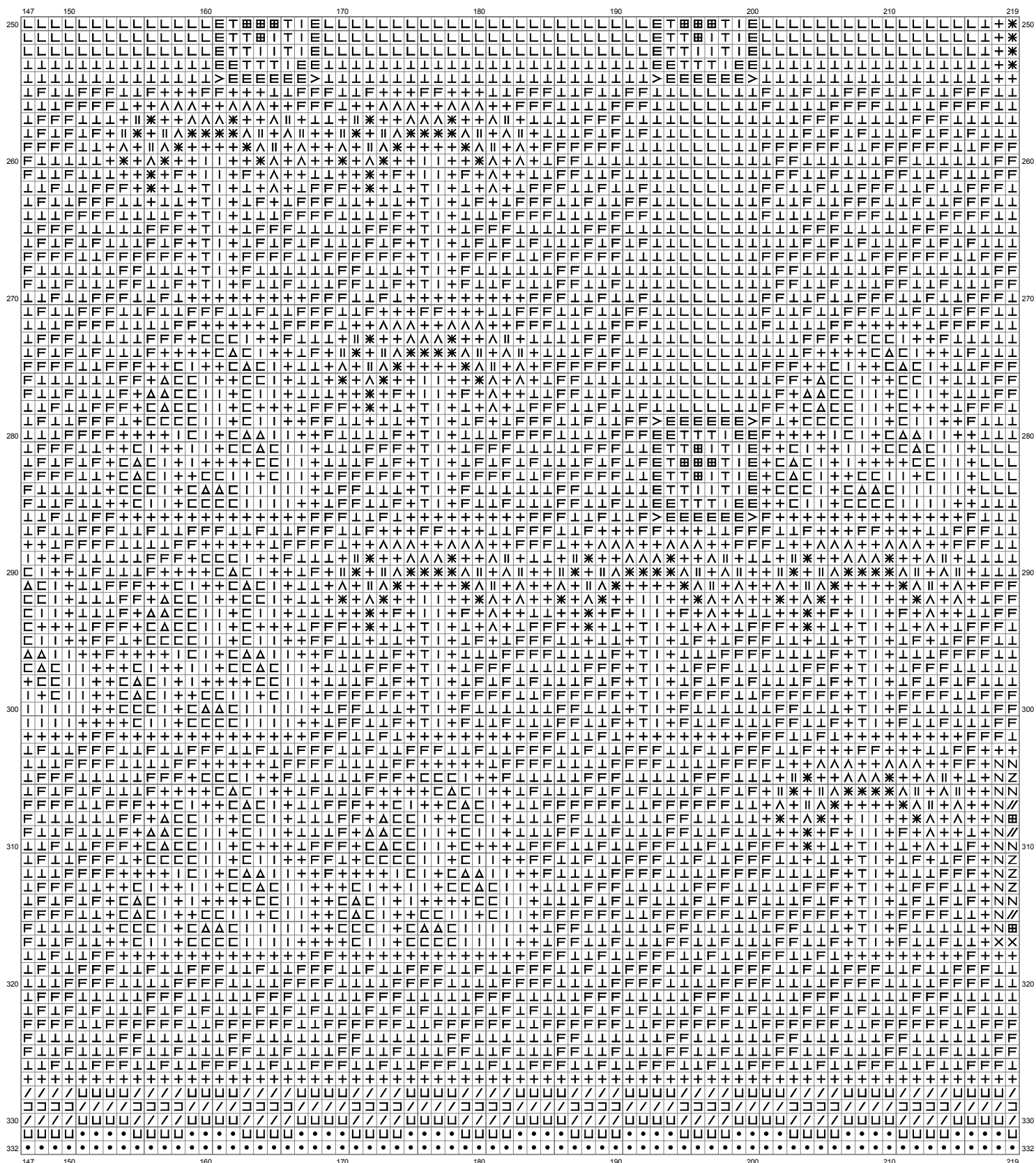
(This chart is printed using KG-Chart LE for Cross Stitch.)

Untitled



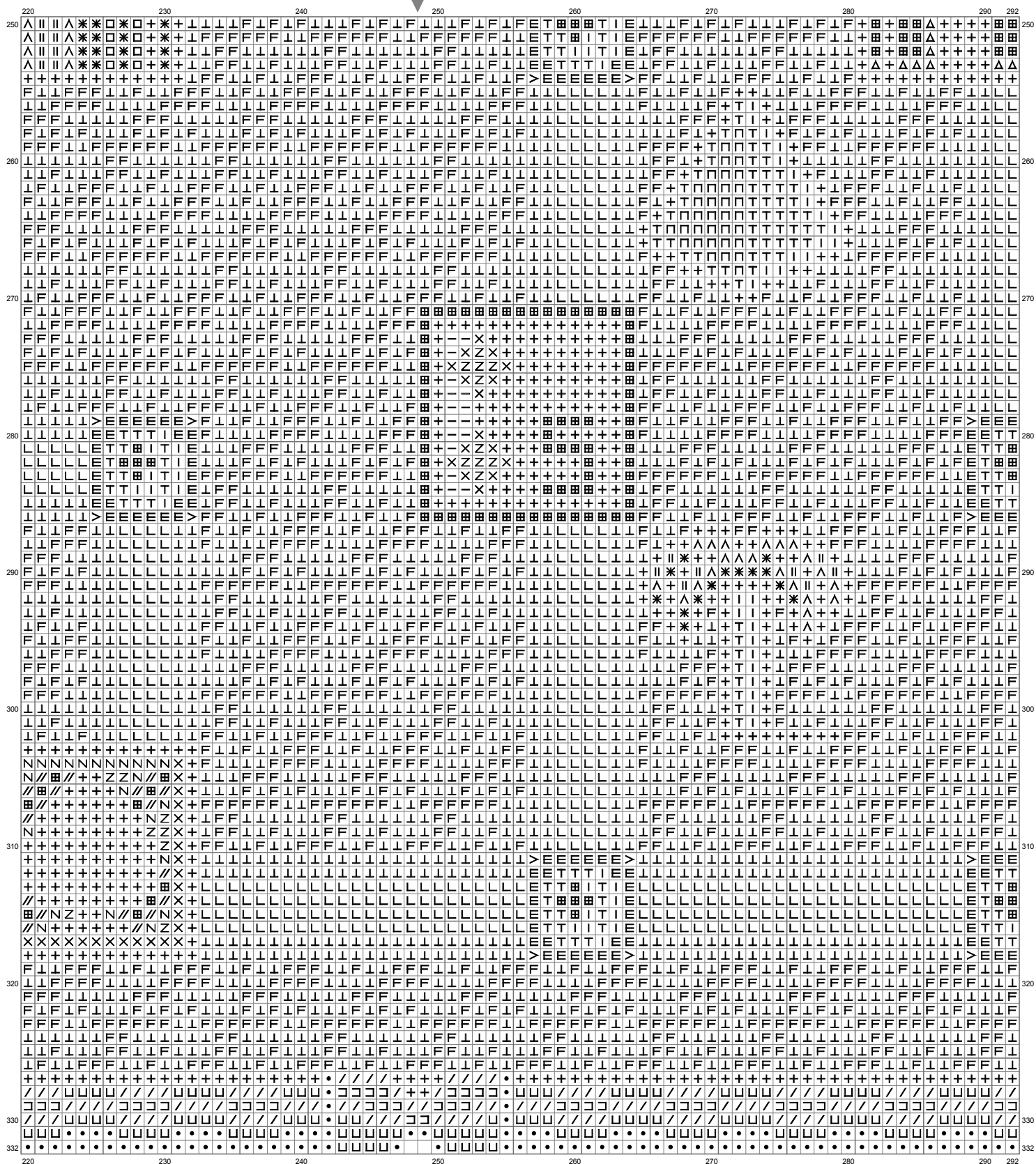
(This chart is printed using KG-Chart LE for Cross Stitch.)

Untitled



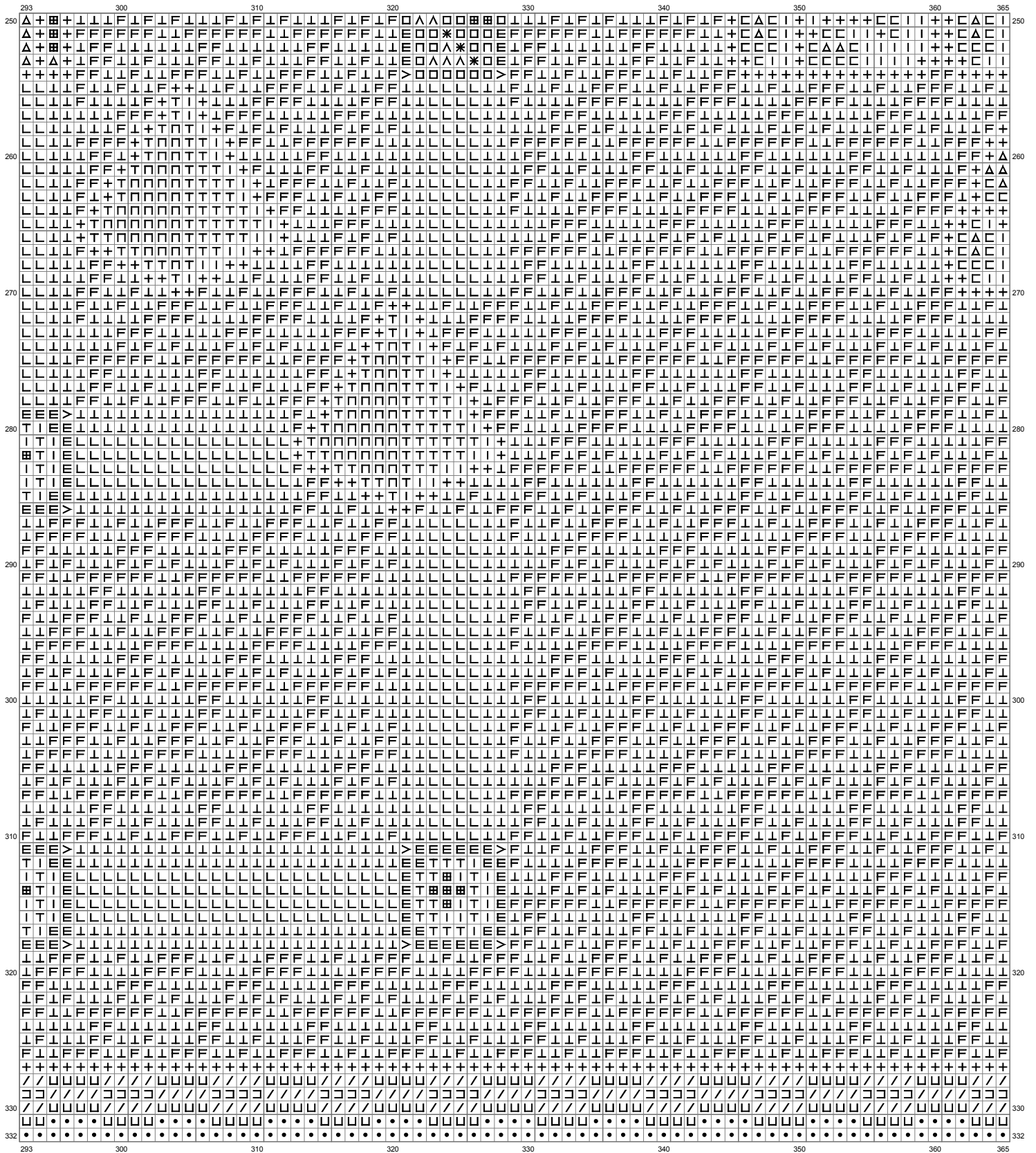
(This chart is printed using KG-Chart LE for Cross Stitch.)

Untitled

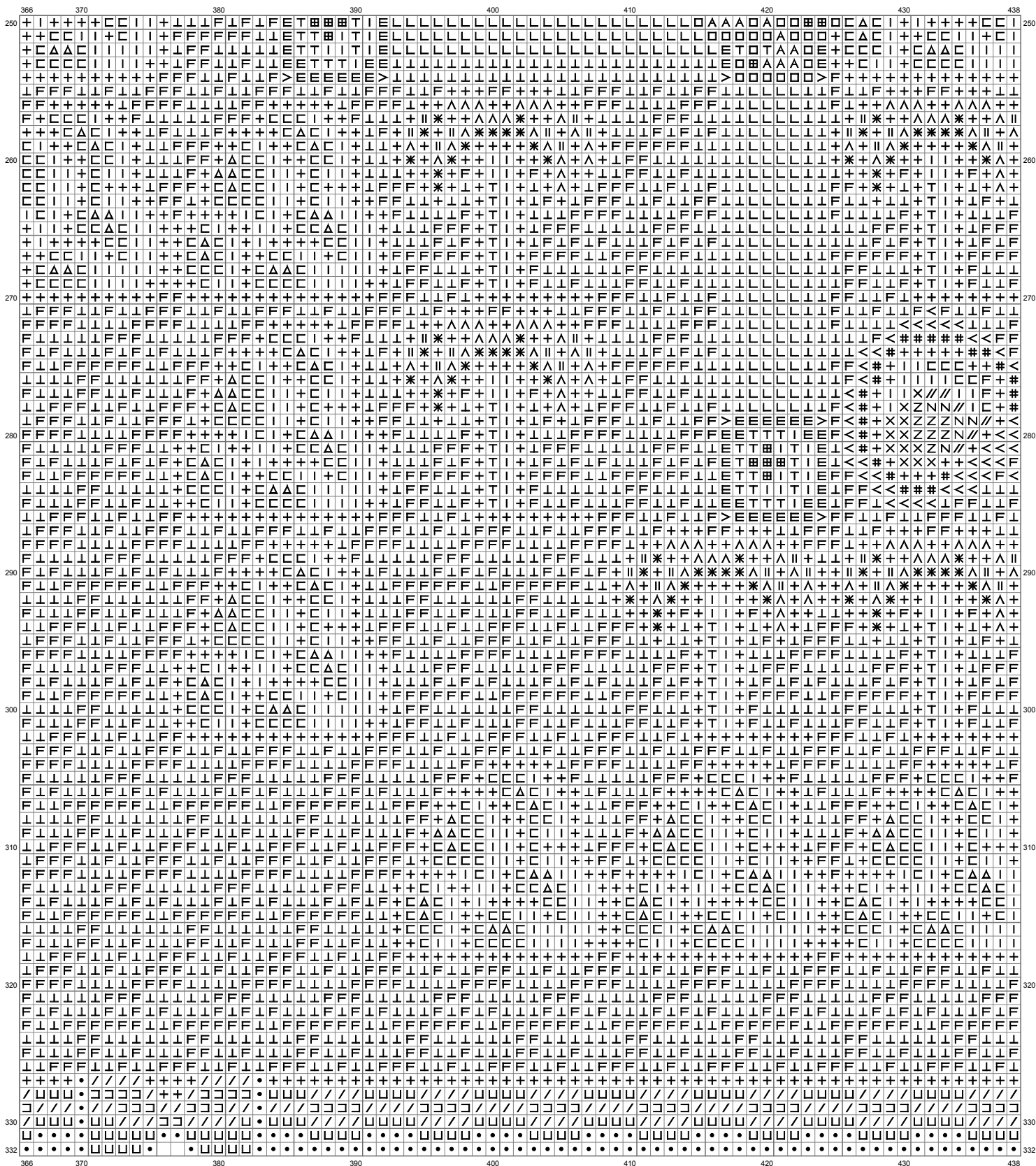


(This chart is printed using KG-Chart LE for Cross Stitch.)

Untitled

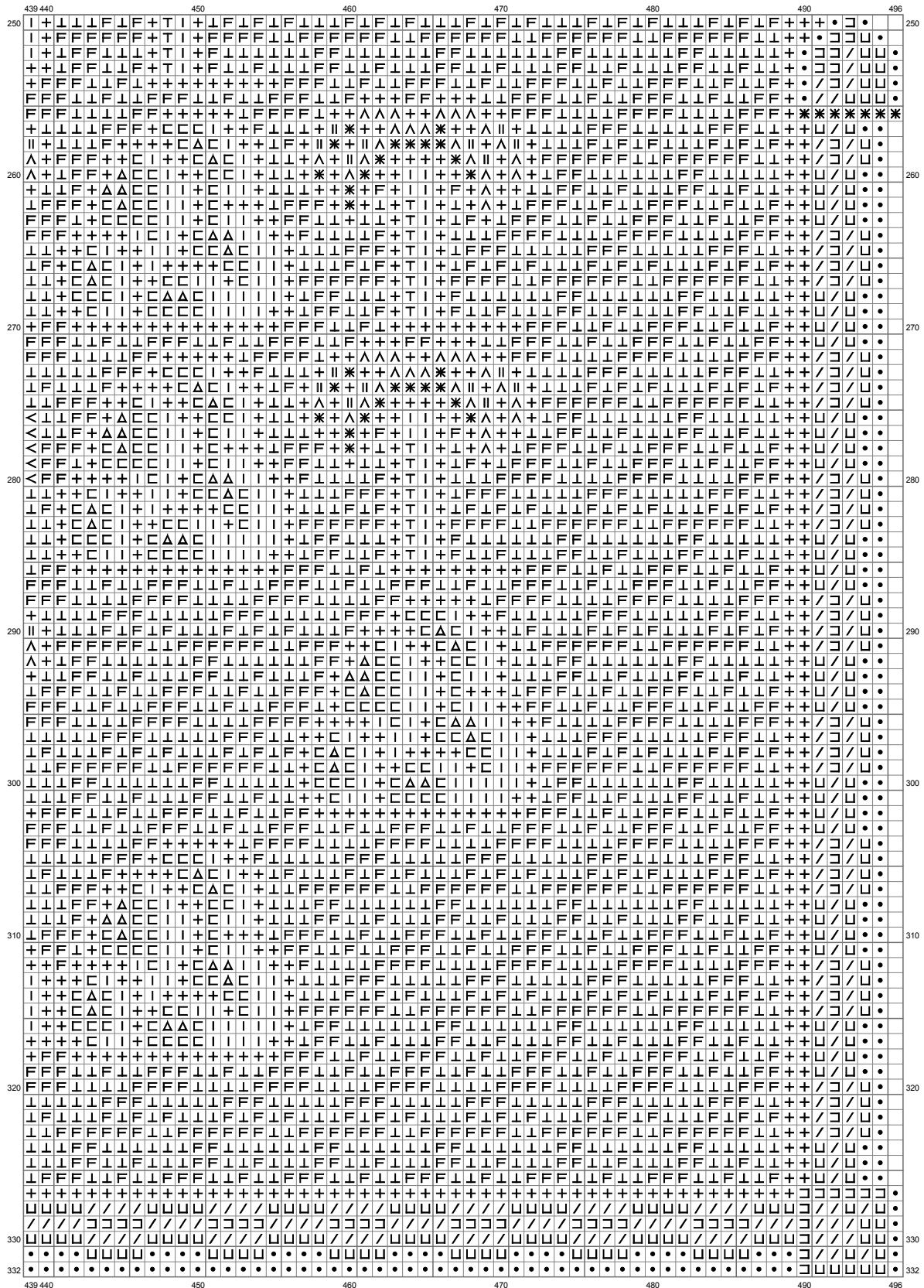


Untitled



(This chart is printed using KG-Chart LE for Cross Stitch.)

Untitled



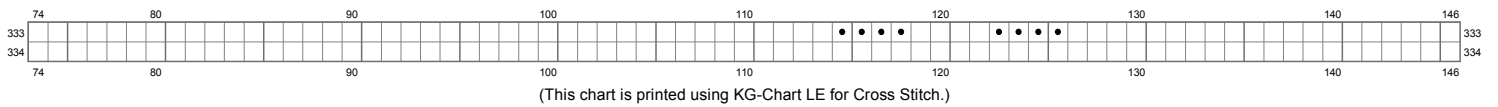
(This chart is printed using KG-Chart LE for Cross Stitch.)

Untitled



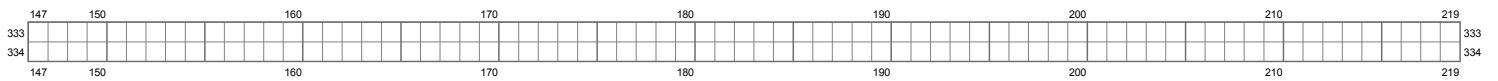
(This chart is printed using KG-Chart LE for Cross Stitch.)

Untitled



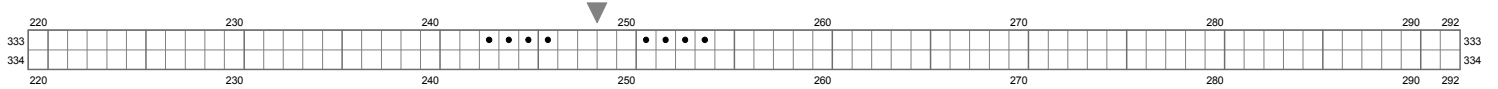
(This chart is printed using KG-Chart LE for Cross Stitch.)

Untitled

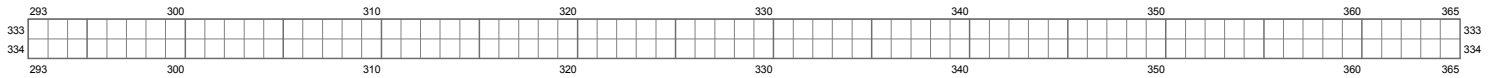


(This chart is printed using KG-Chart LE for Cross Stitch.)

Untitled

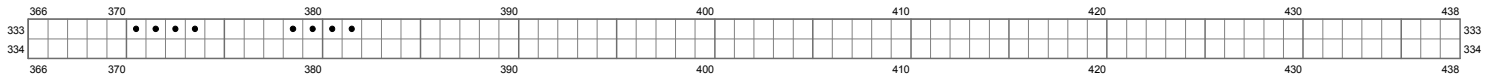


Untitled



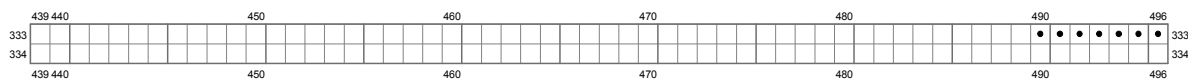
(This chart is printed using KG-Chart LE for Cross Stitch.)

Untitled



(This chart is printed using KG-Chart LE for Cross Stitch.)

Untitled



(This chart is printed using KG-Chart LE for Cross Stitch.)

Stitch Count:496w x 334h // Cloth:Aida Cloth's Color:White

Finished Size:139.98 cm x 94.26 cm (18 ct./inch) // Total 34 Colors

Color Table (DMC)

Cross Stitch

	310	(27532 ct)
	938	(744 ct)
	939	(388 ct)
	3842	(80 ct)
	3843	(2447 ct)
	986	(624 ct)
	829	(2574 ct)
	910	(388 ct)
	367	(2000 ct)
	906	(2607 ct)
	470	(818 ct)
	907	(322 ct)
	912	(1104 ct)
	502	(1979 ct)
	503	(1988 ct)
	3845	(1189 ct)
	813	(313 ct)
	827	(506 ct)
	817	(302 ct)
	782	(1811 ct)
	783	(19037 ct)
	3852	(1324 ct)
	3820	(26875 ct)
	742	(47795 ct)
	972	(555 ct)
	976	(482 ct)
	3854	(110 ct)
	973	(42 ct)
	307	(4059 ct)
	3771	(8833 ct)
	3023	(25 ct)
	3752	(744 ct)
	3865	(941 ct)
	B5200	(952 ct)