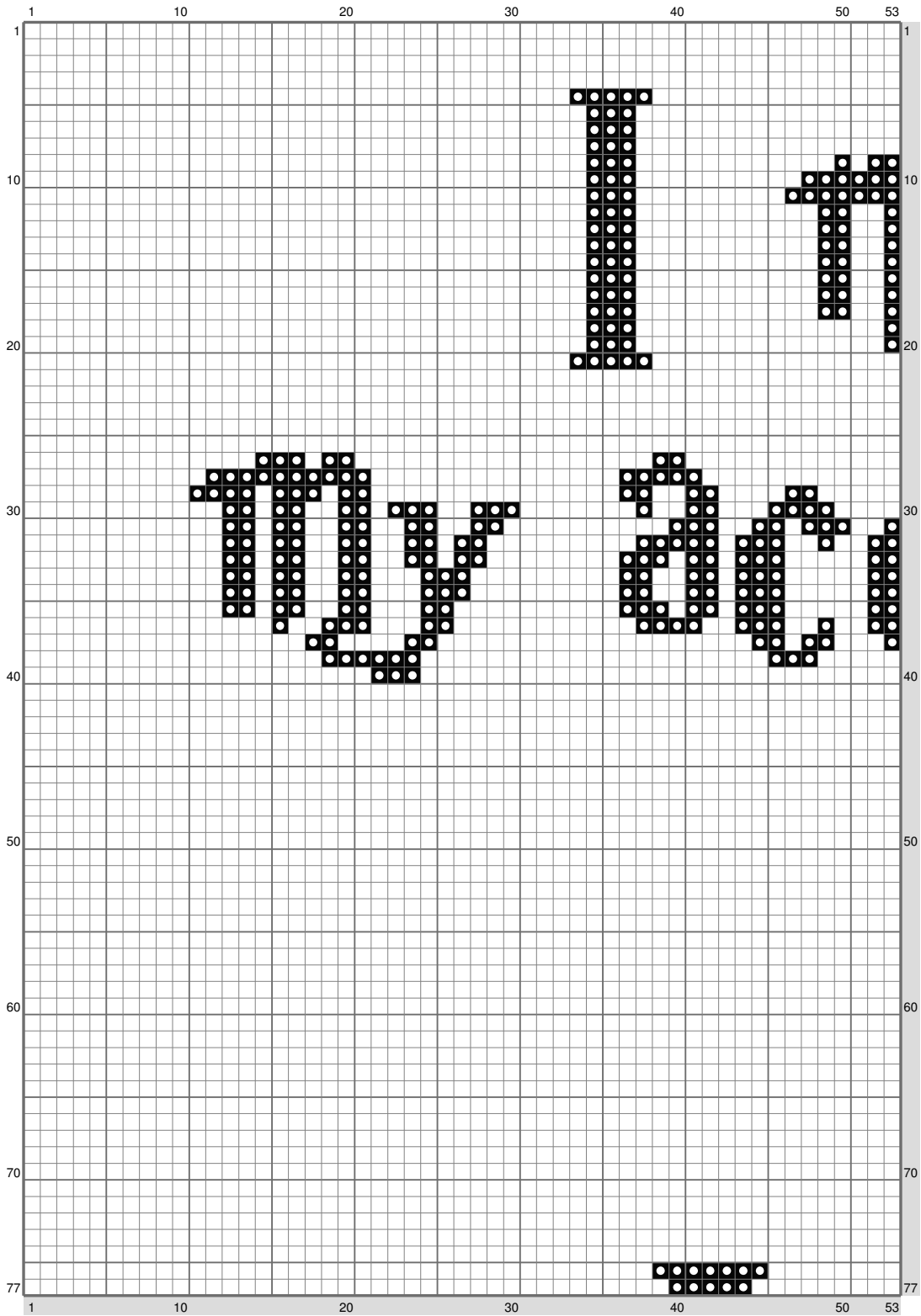


Untitled

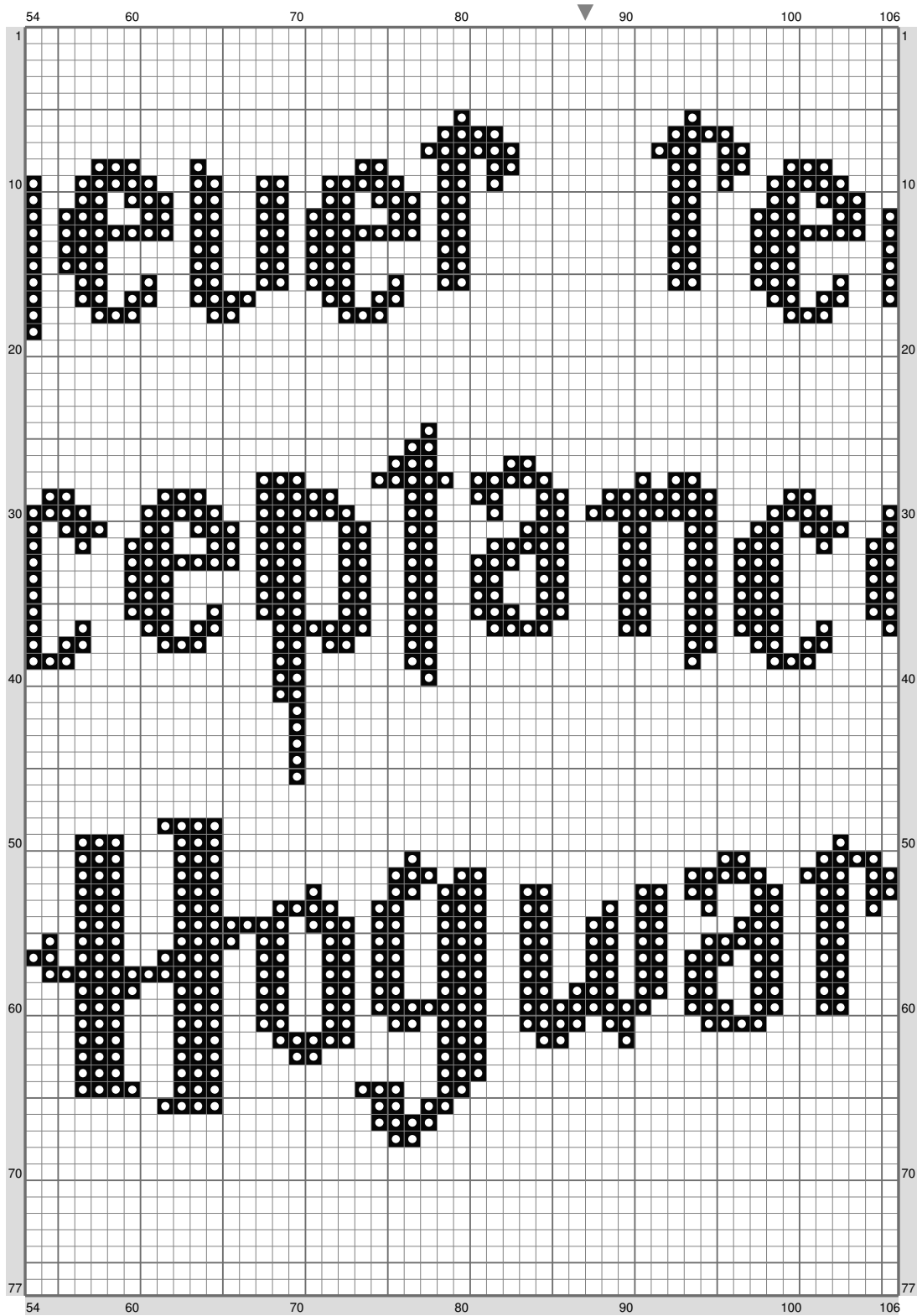
I never received
my acceptance letter to
Hogwarts
SO I'M LEAVING
THE SHIRE
**TO BECOME
A JEDI**
*AND GO WHERE
NO MAN HAS
GONE BEFORE*

Untitled



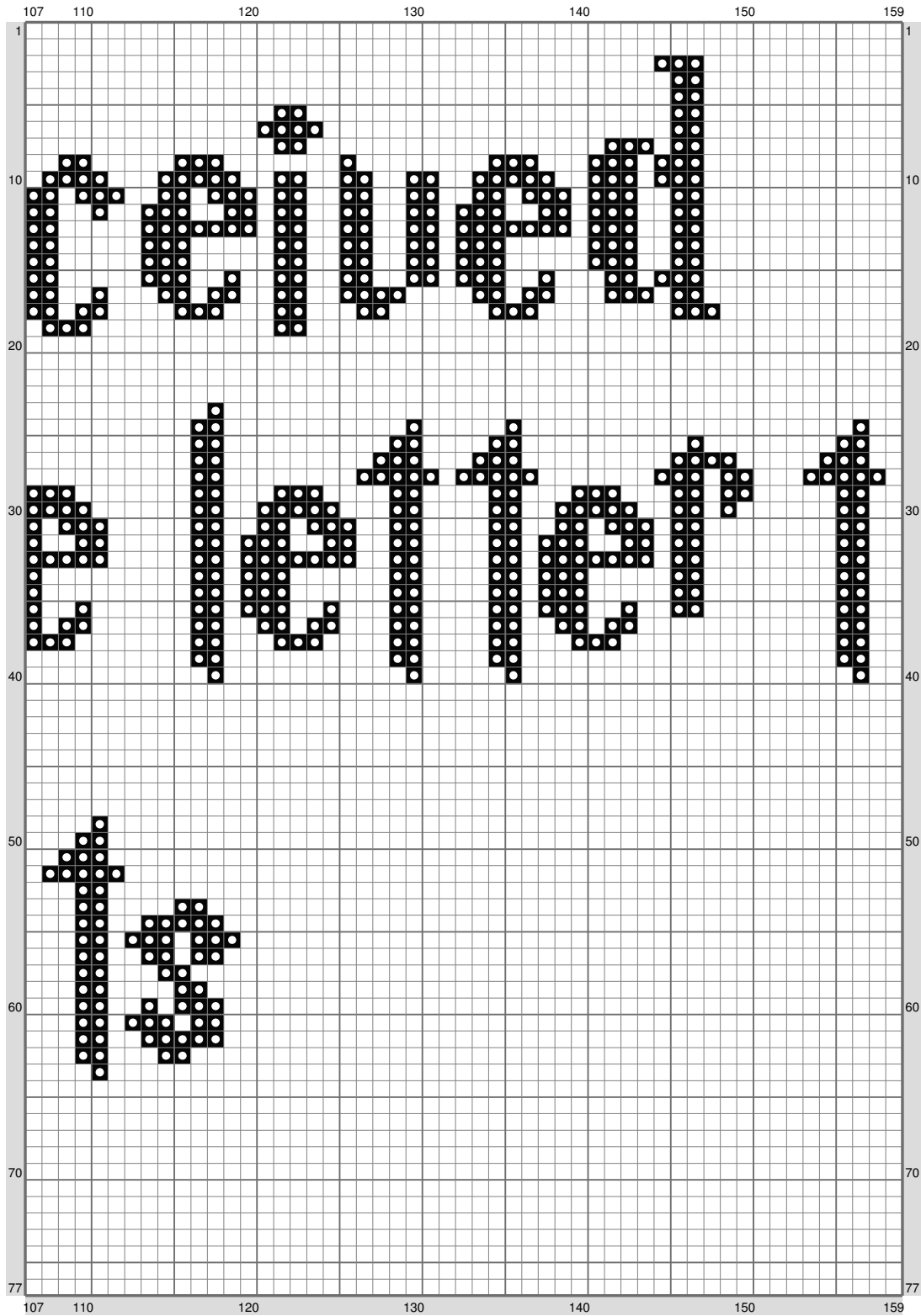
(This chart is printed using KG-Chart LE for Cross Stitch.)

Untitled



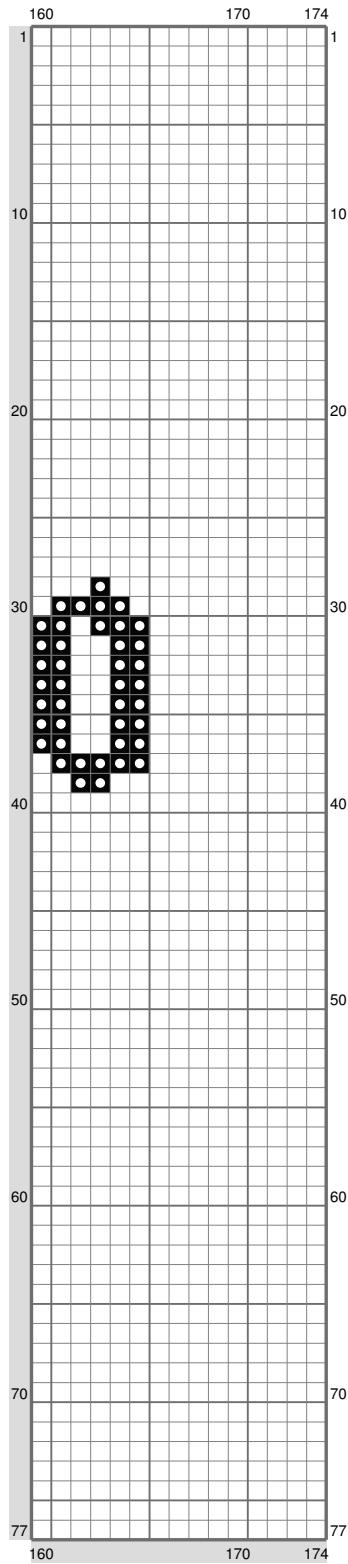
(This chart is printed using KG-Chart LE for Cross Stitch.)

Untitled



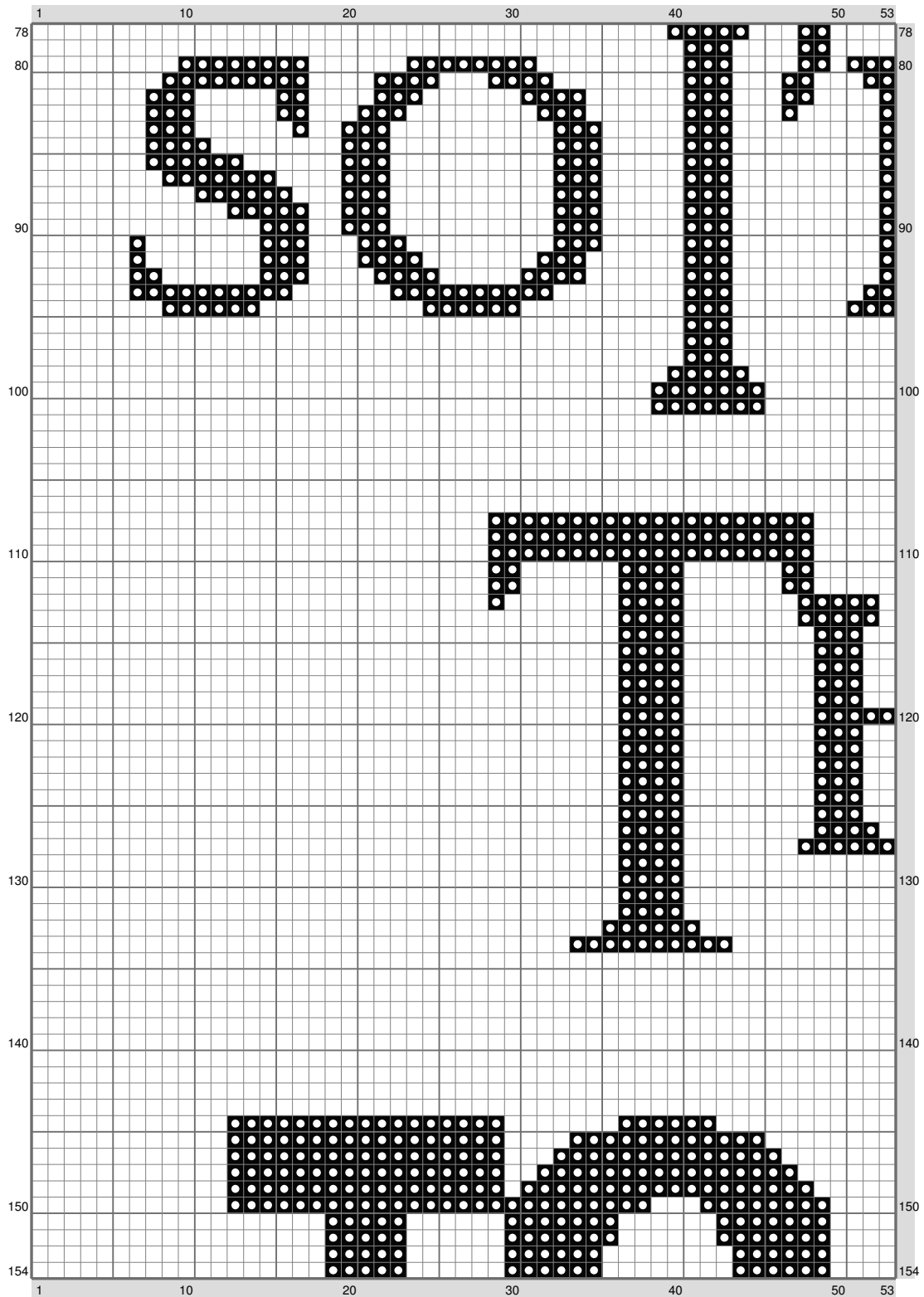
(This chart is printed using KG-Chart LE for Cross Stitch.)

Untitled



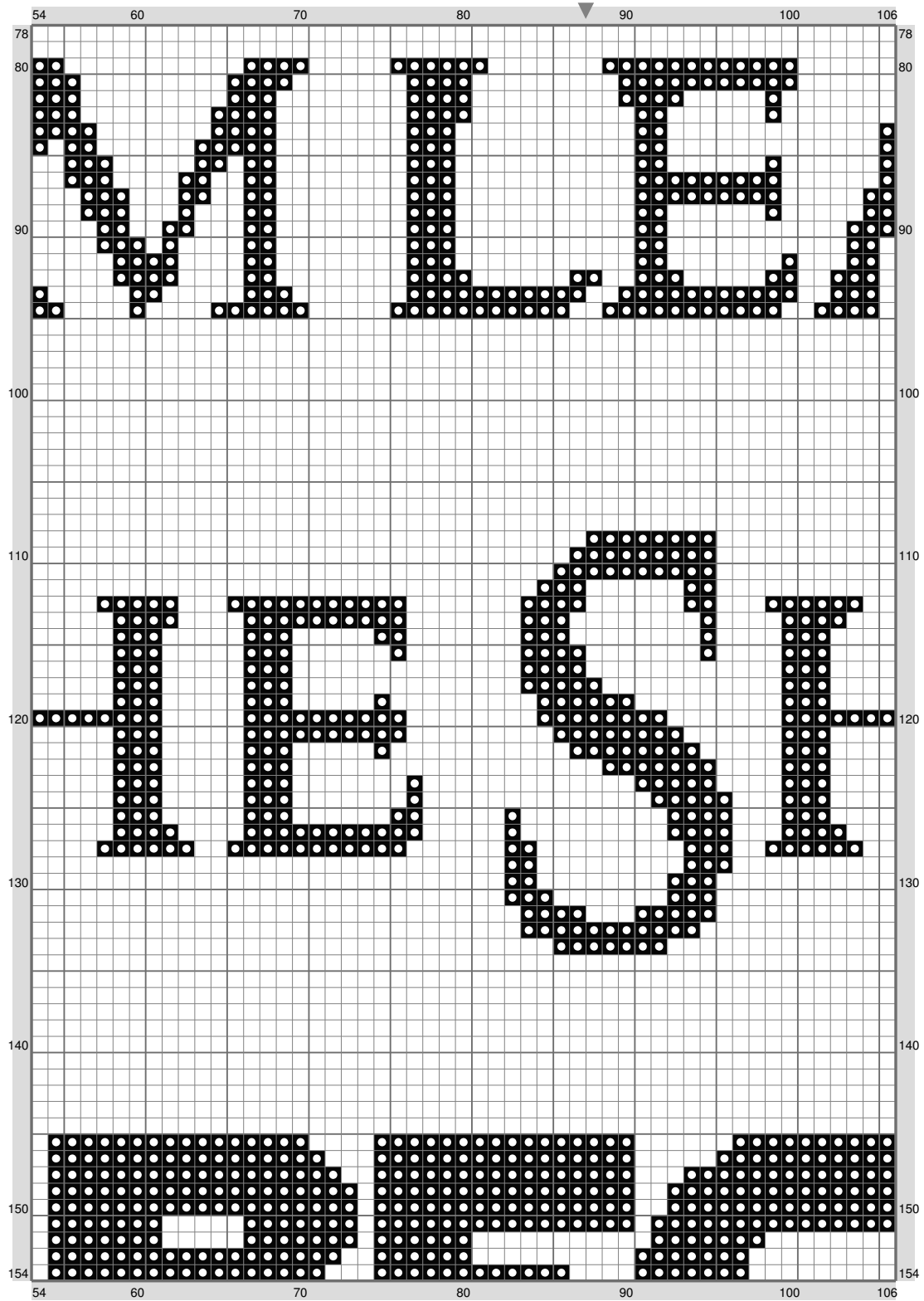
(This chart is printed using KG-Chart LE for Cross Stitch.)

Untitled



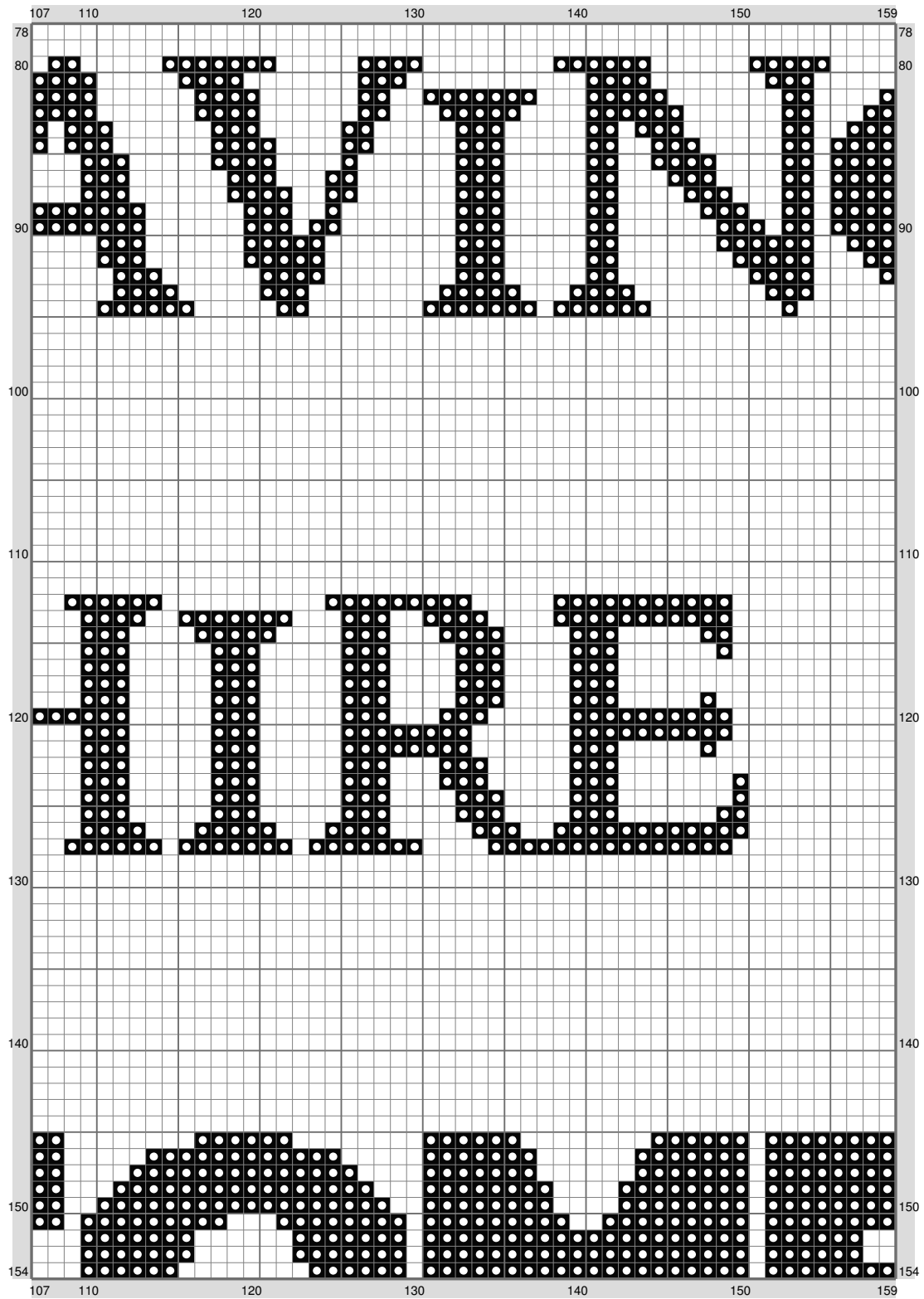
(This chart is printed using KG-Chart LE for Cross Stitch.)

Untitled



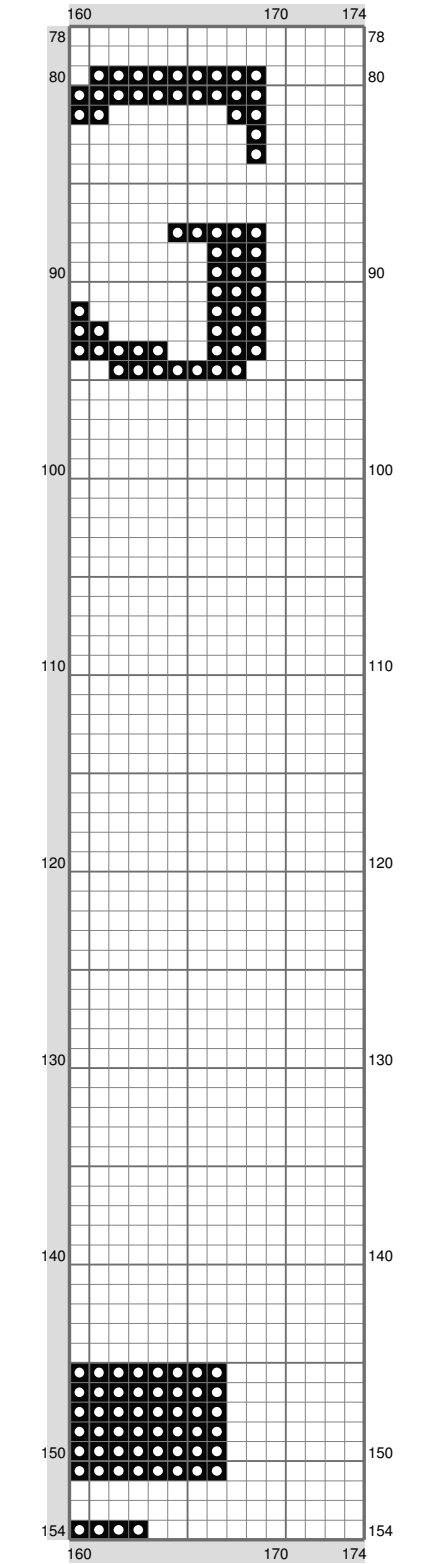
(This chart is printed using KG-Chart LE for Cross Stitch.)

Untitled

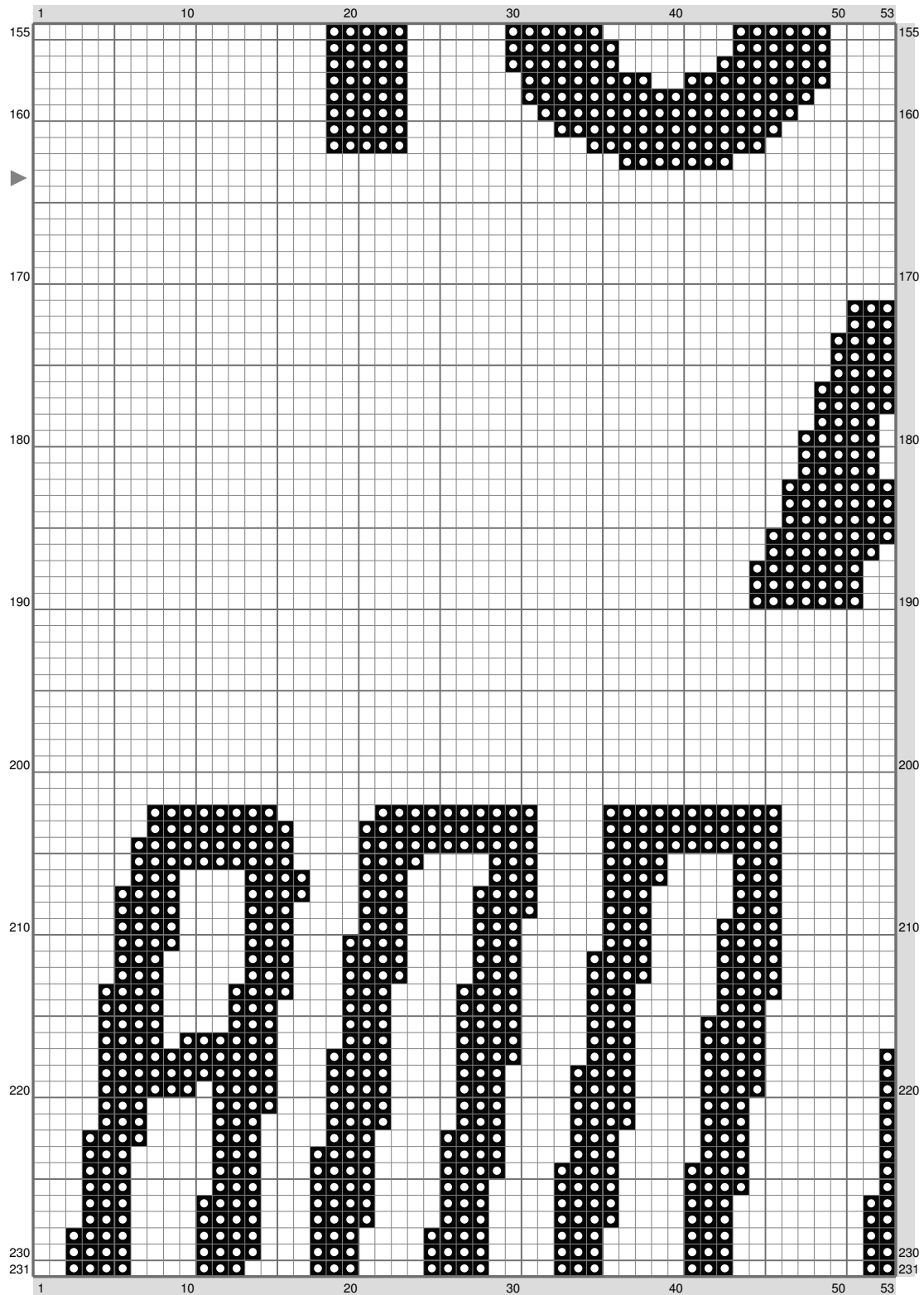


(This chart is printed using KG-Chart LE for Cross Stitch.)

Untitled

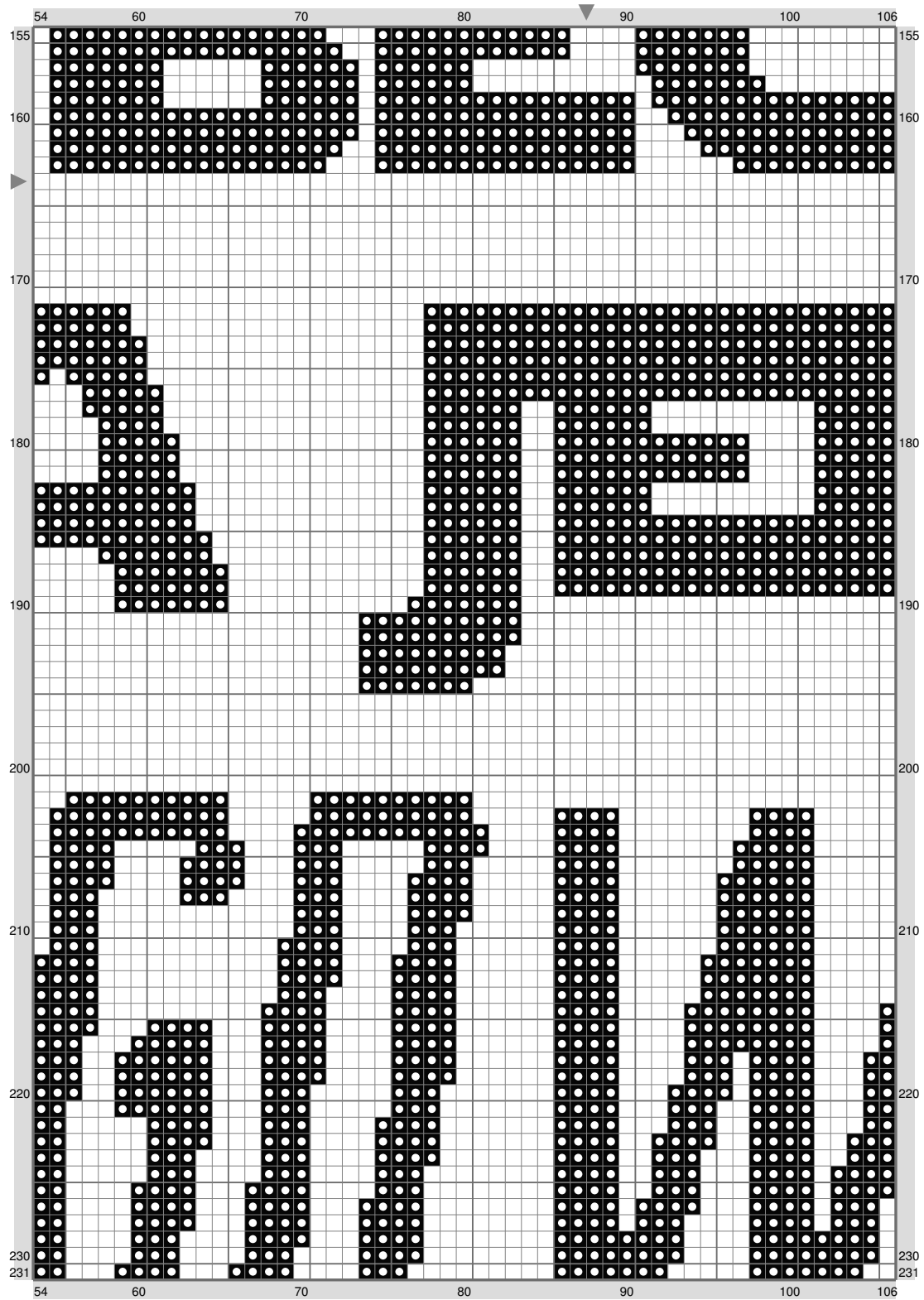


Untitled



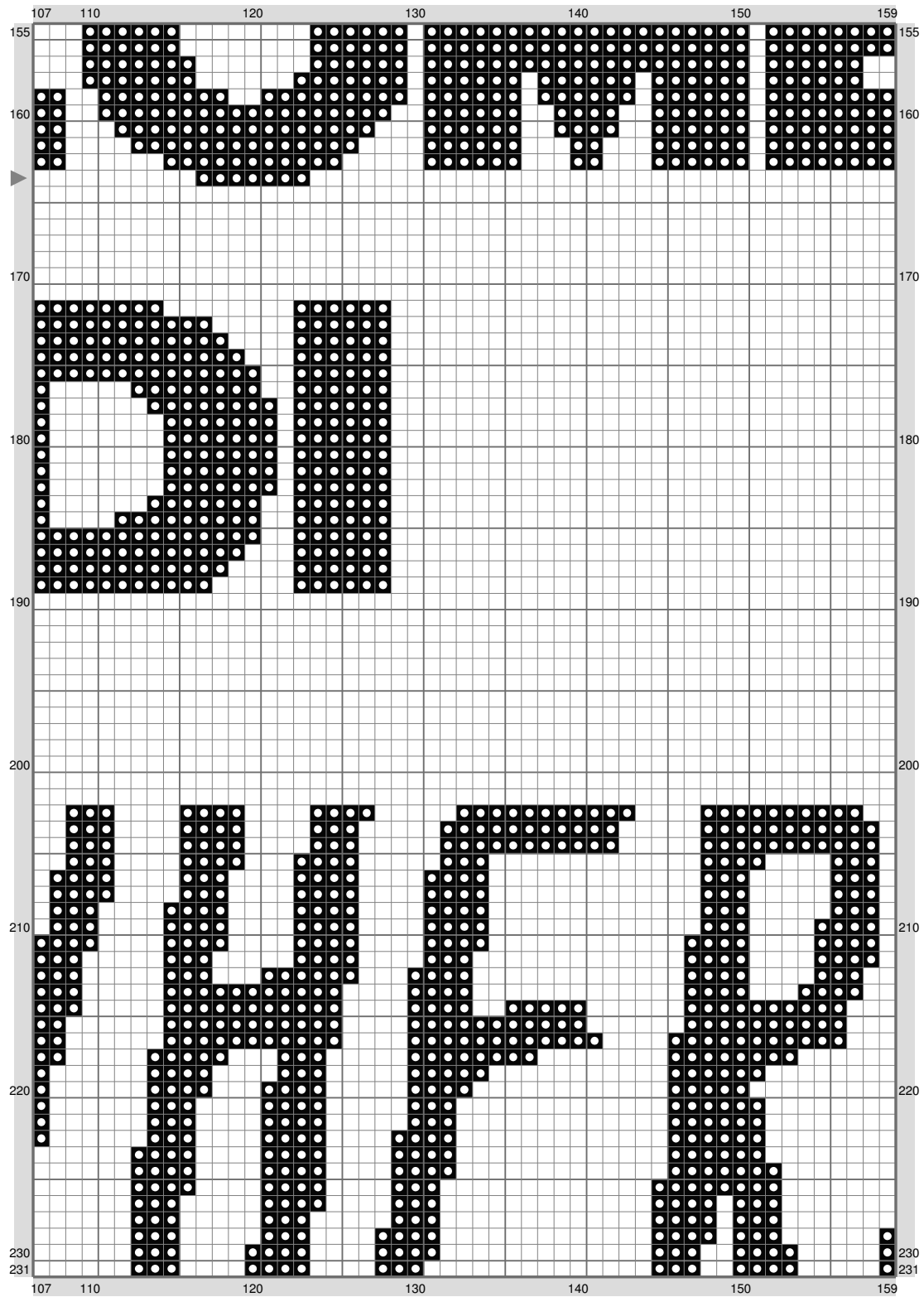
(This chart is printed using KG-Chart LE for Cross Stitch.)

Untitled

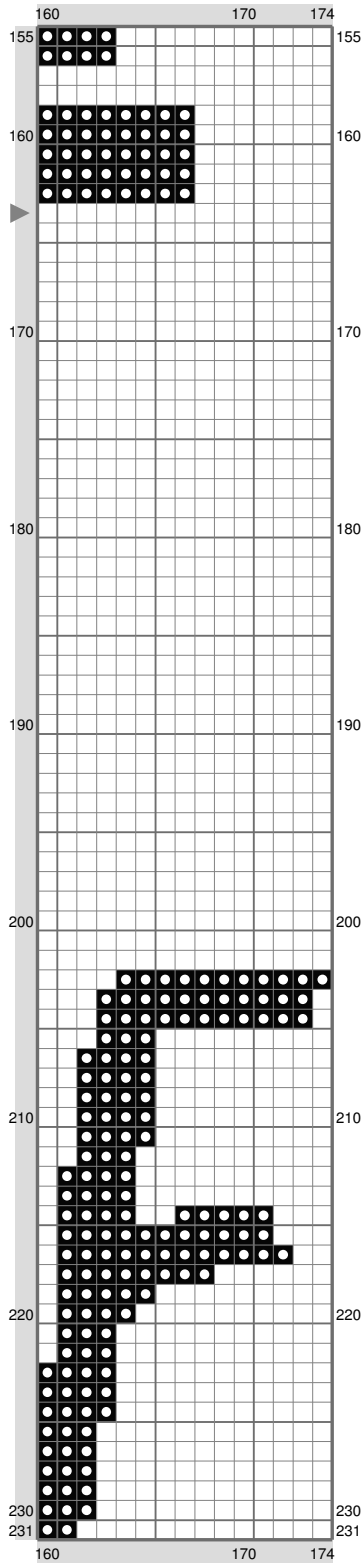


(This chart is printed using KG-Chart LE for Cross Stitch.)

Untitled

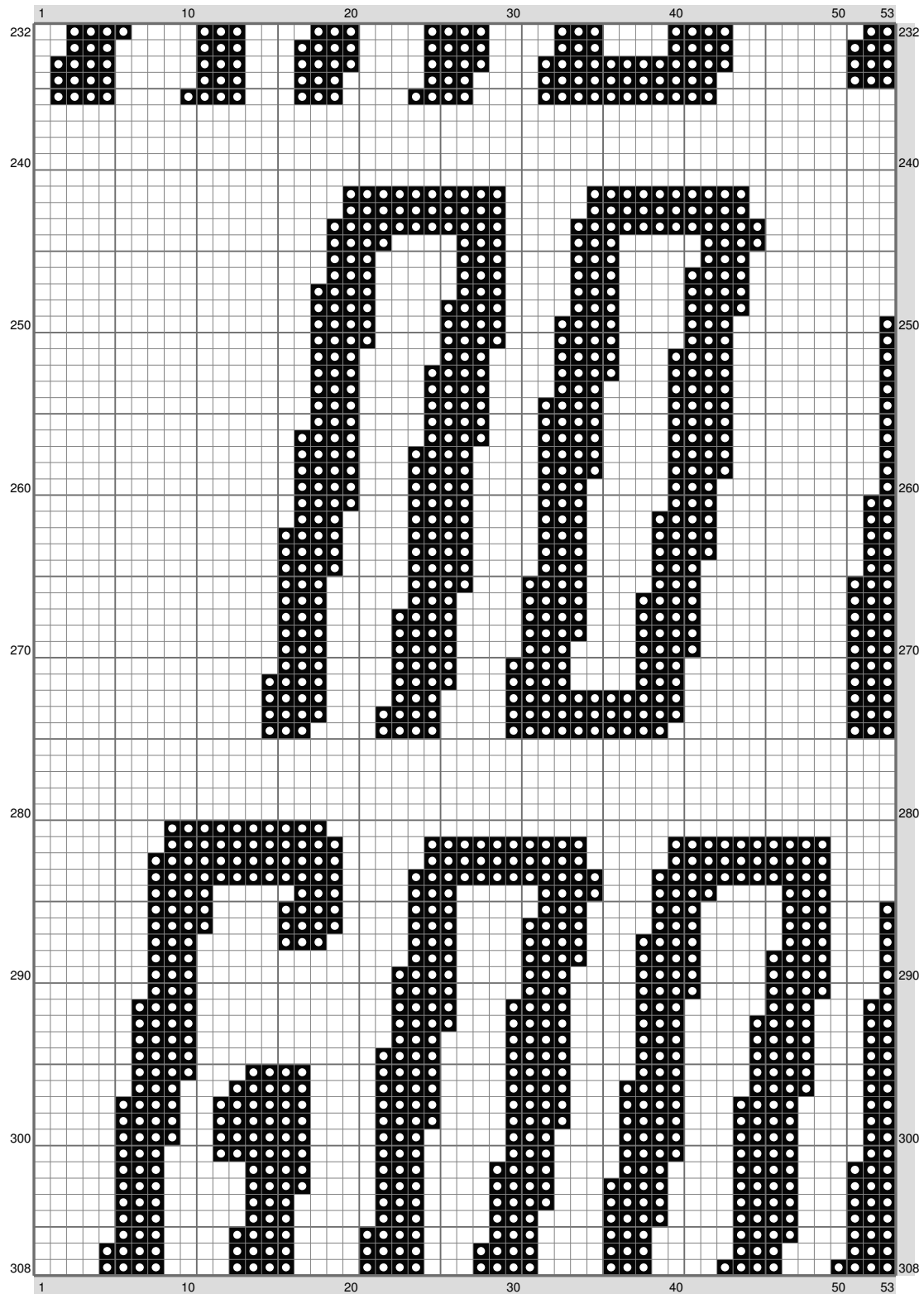


Untitled



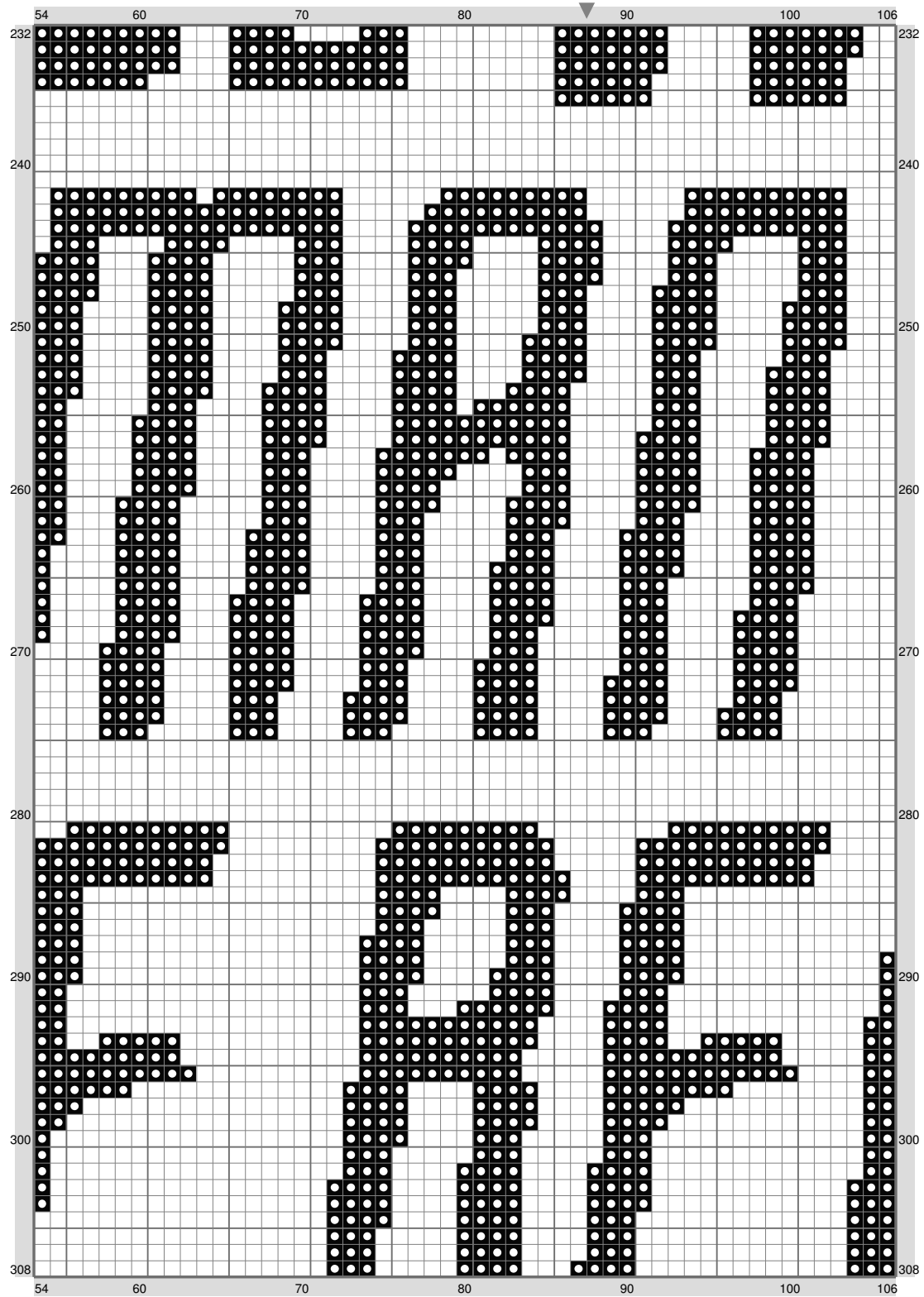
(This chart is printed using KG-Chart LE for Cross Stitch.)

Untitled



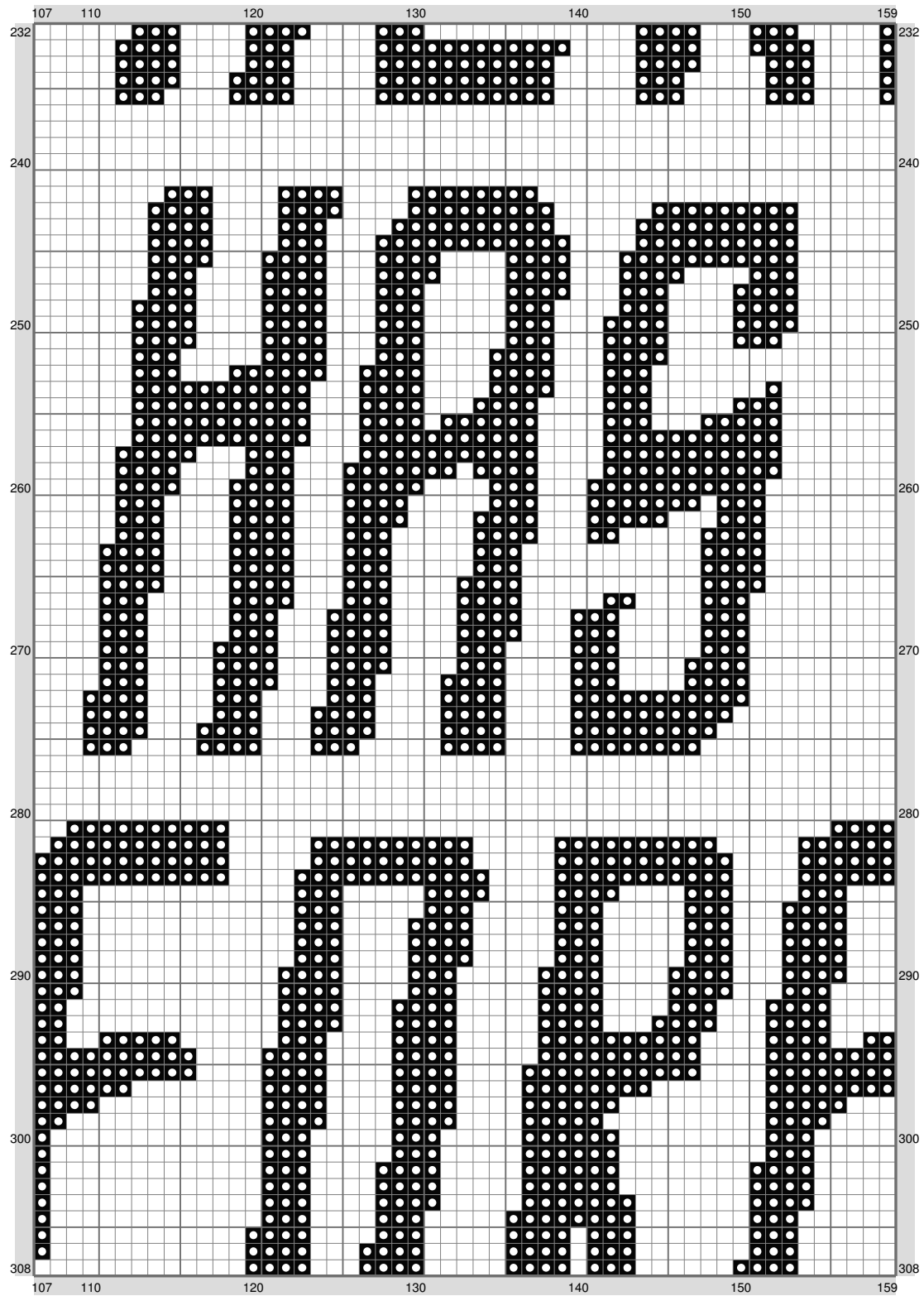
(This chart is printed using KG-Chart LE for Cross Stitch.)

Untitled



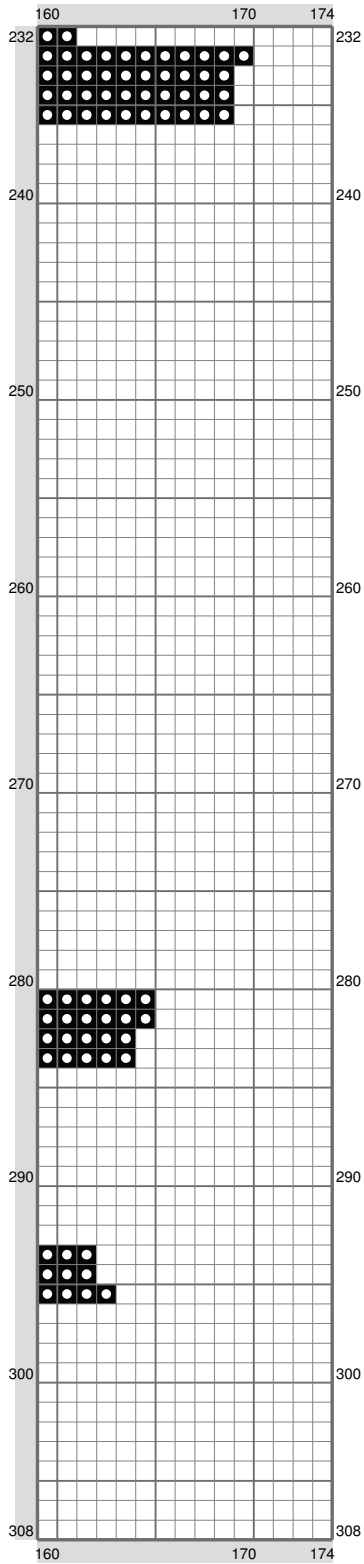
(This chart is printed using KG-Chart LE for Cross Stitch.)

Untitled



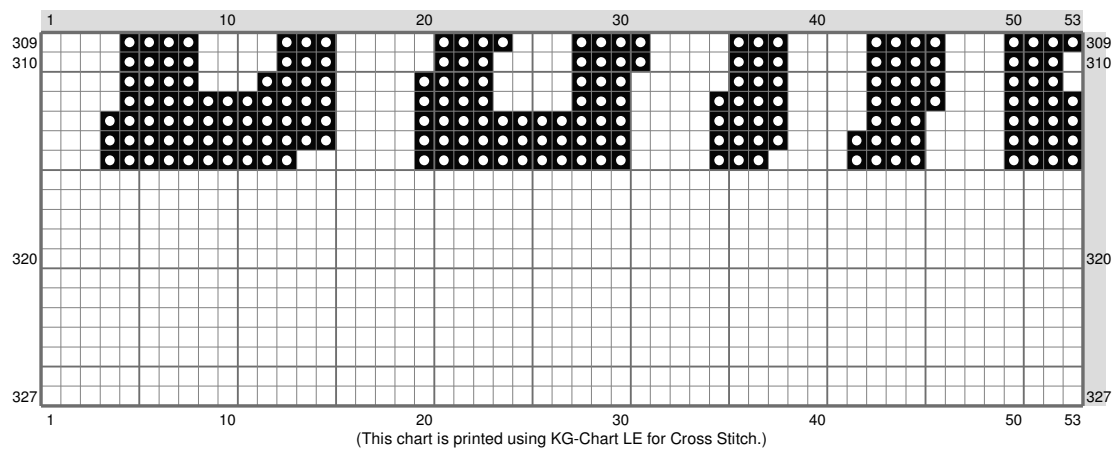
(This chart is printed using KG-Chart LE for Cross Stitch.)

Untitled

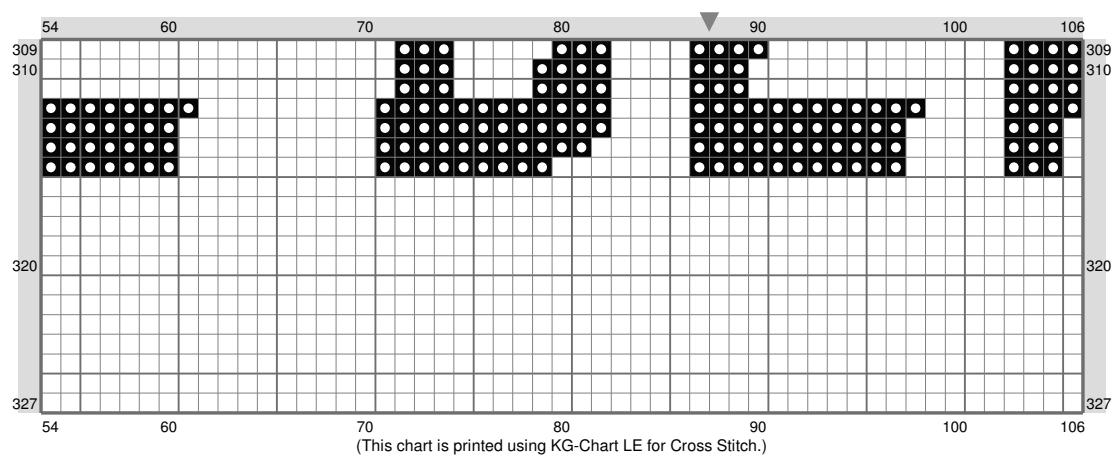


(This chart is printed using KG-Chart LE for Cross Stitch.)

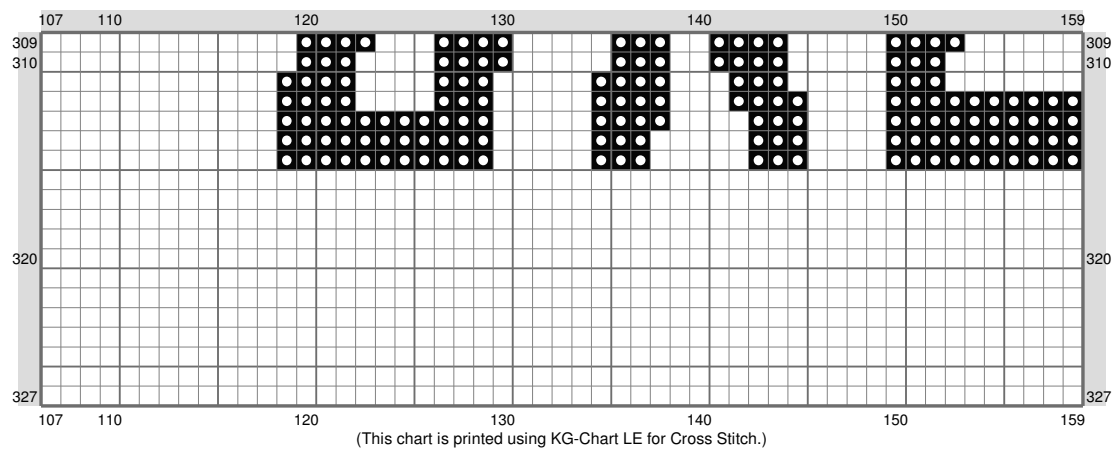
Untitled



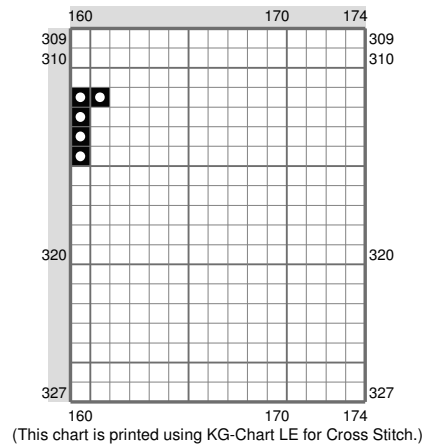
Untitled



Untitled



Untitled



Stitch Count: 174w x 327h
Finished Size: 55.24 cm x 103.82 cm (16 ct./inch)
Cloth: Linen
Cloth's Color: White
of colors: 1 Colors

Color Table (DMC)

Cross Stitch

■ 310 (14198 ct)