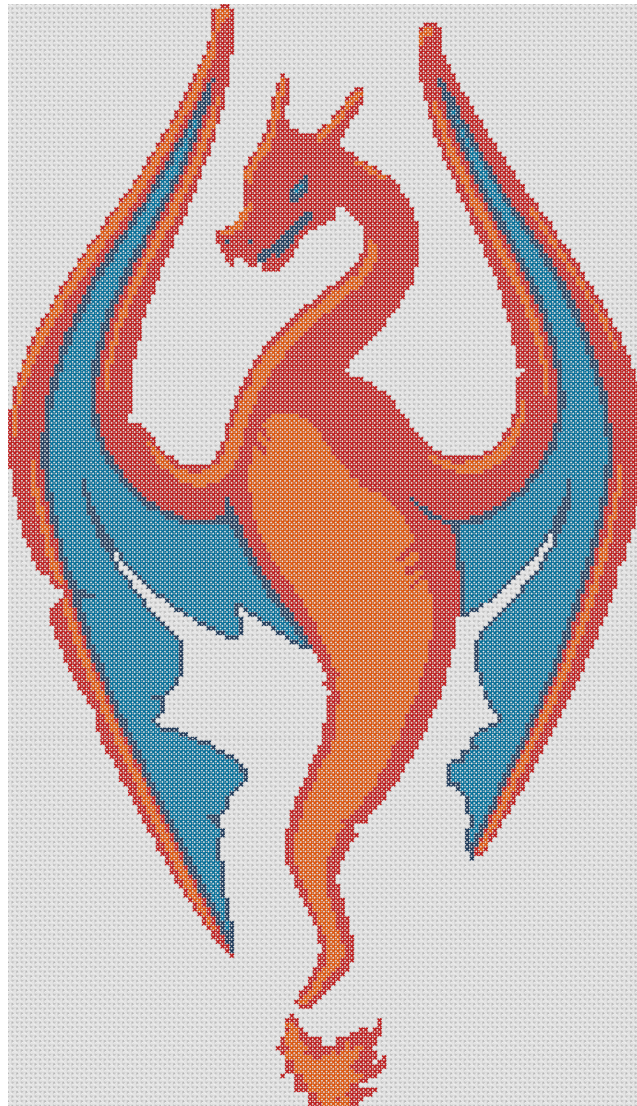
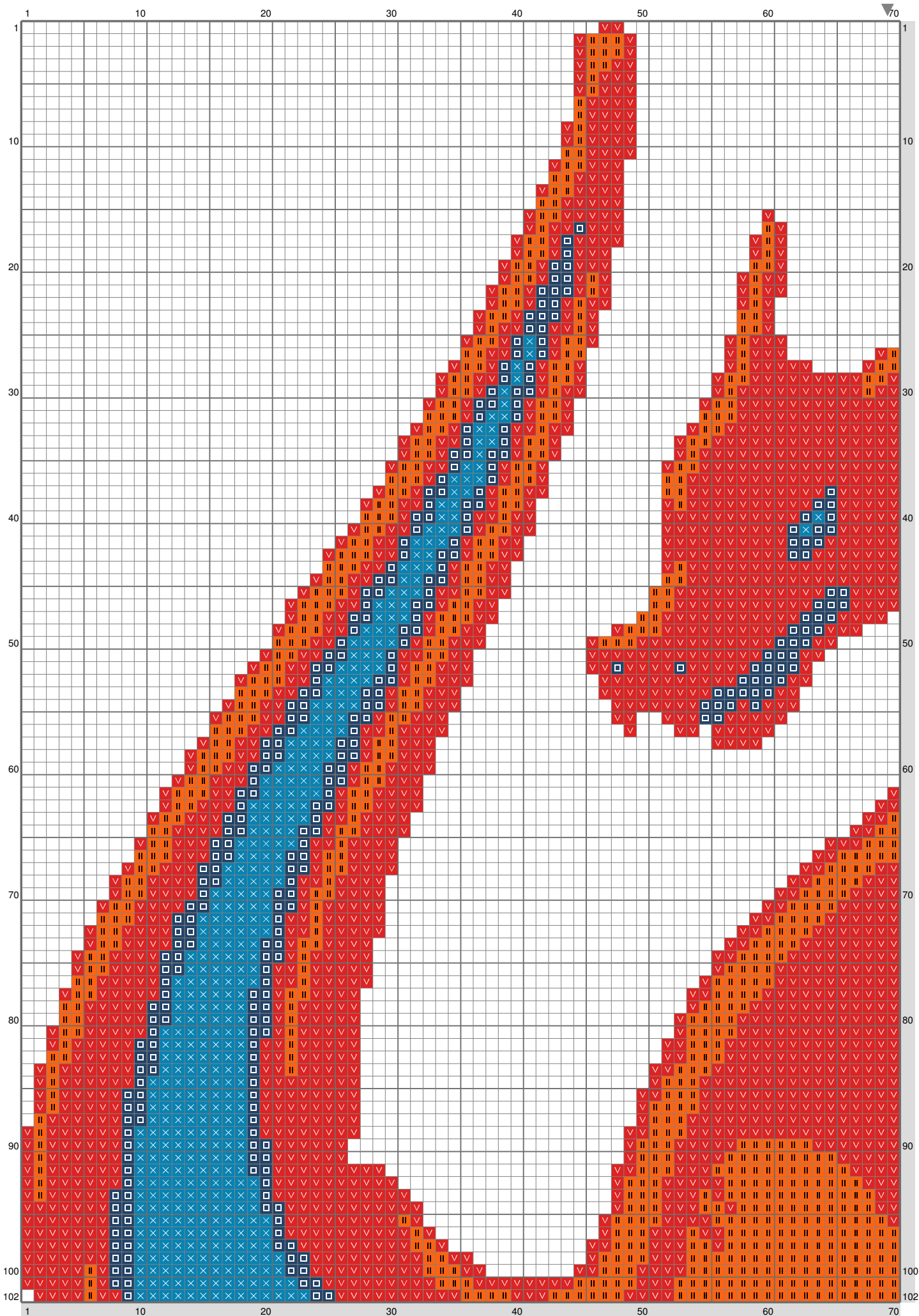


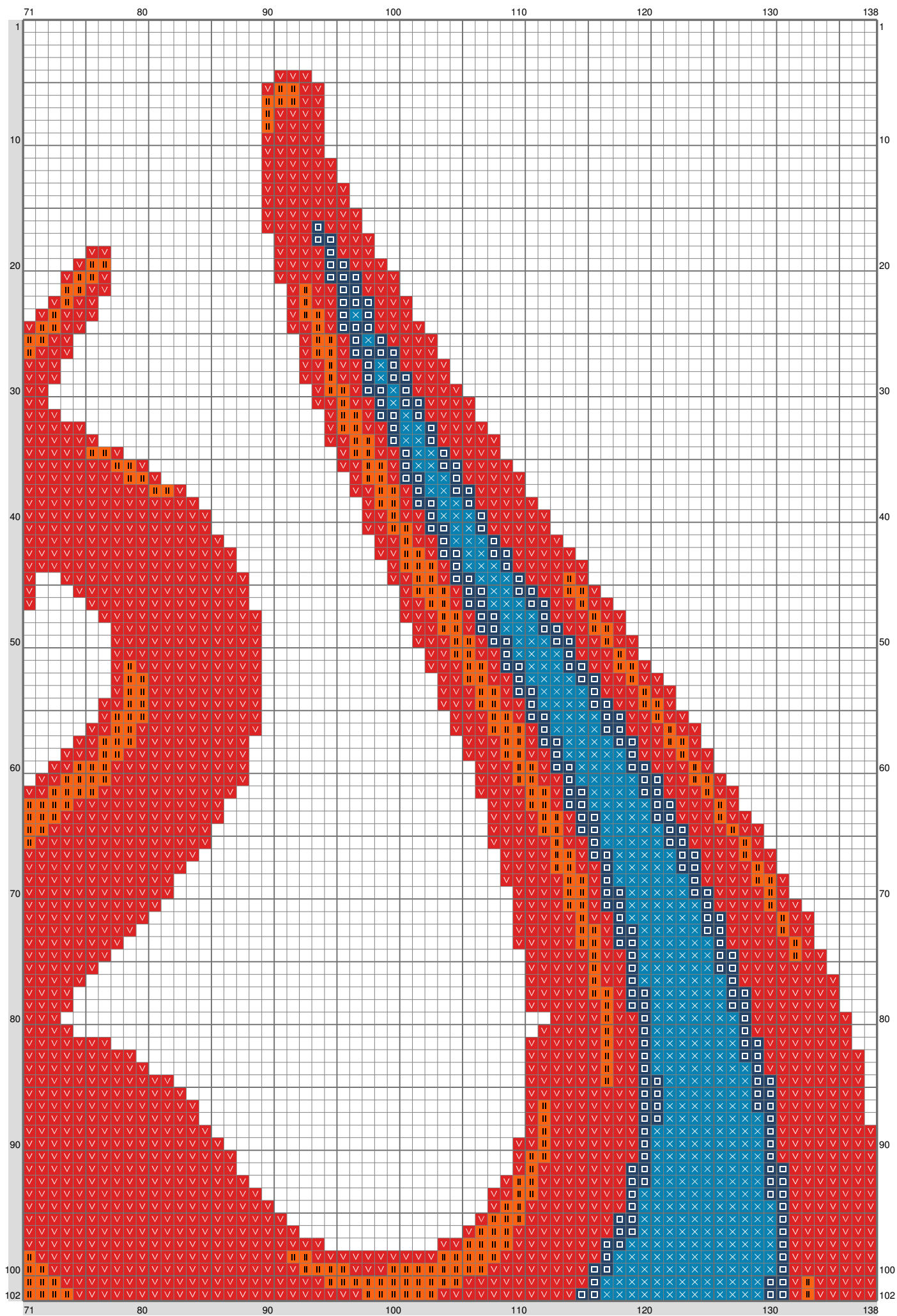
Fire Born



Fire Born

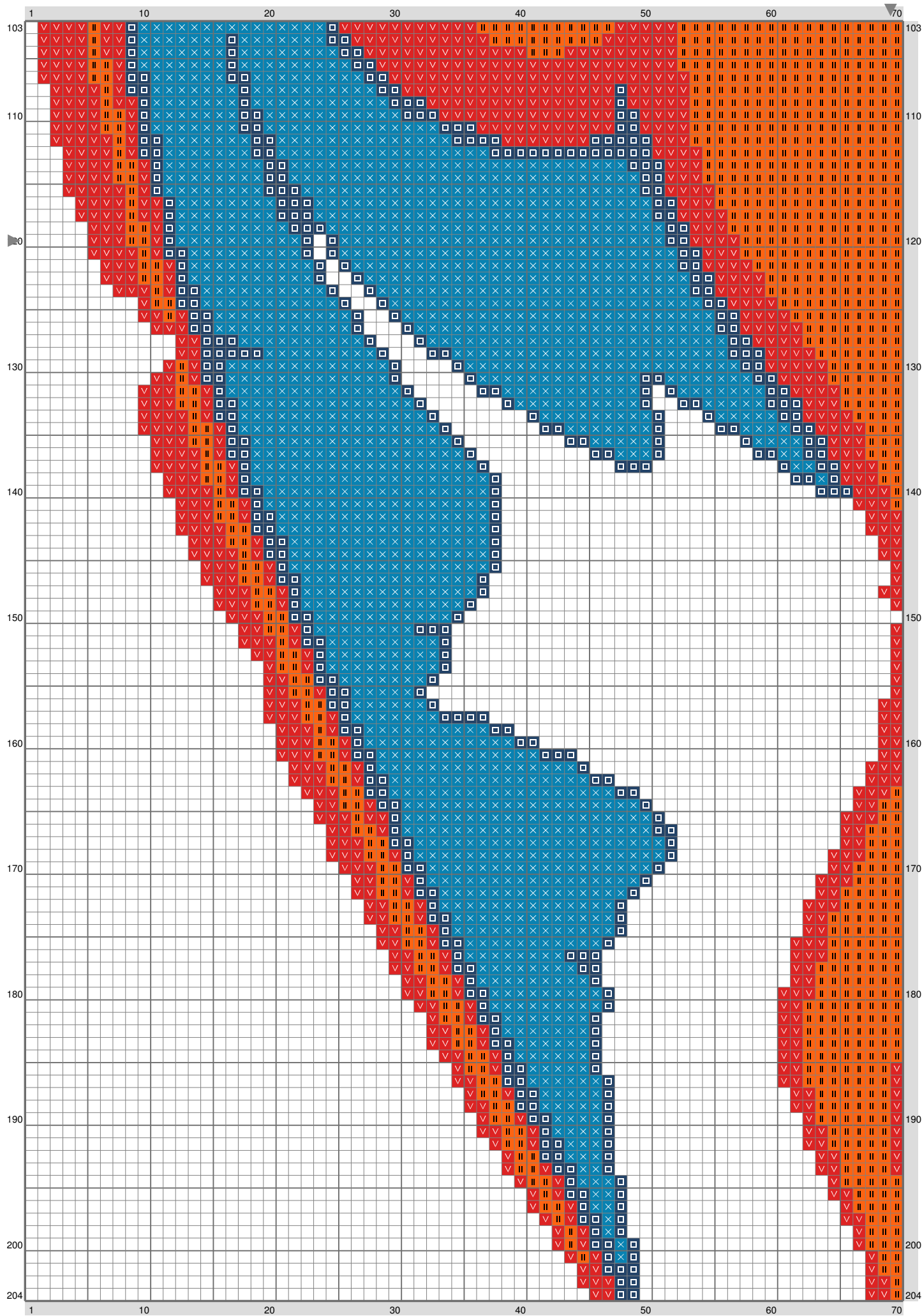


Fire Born



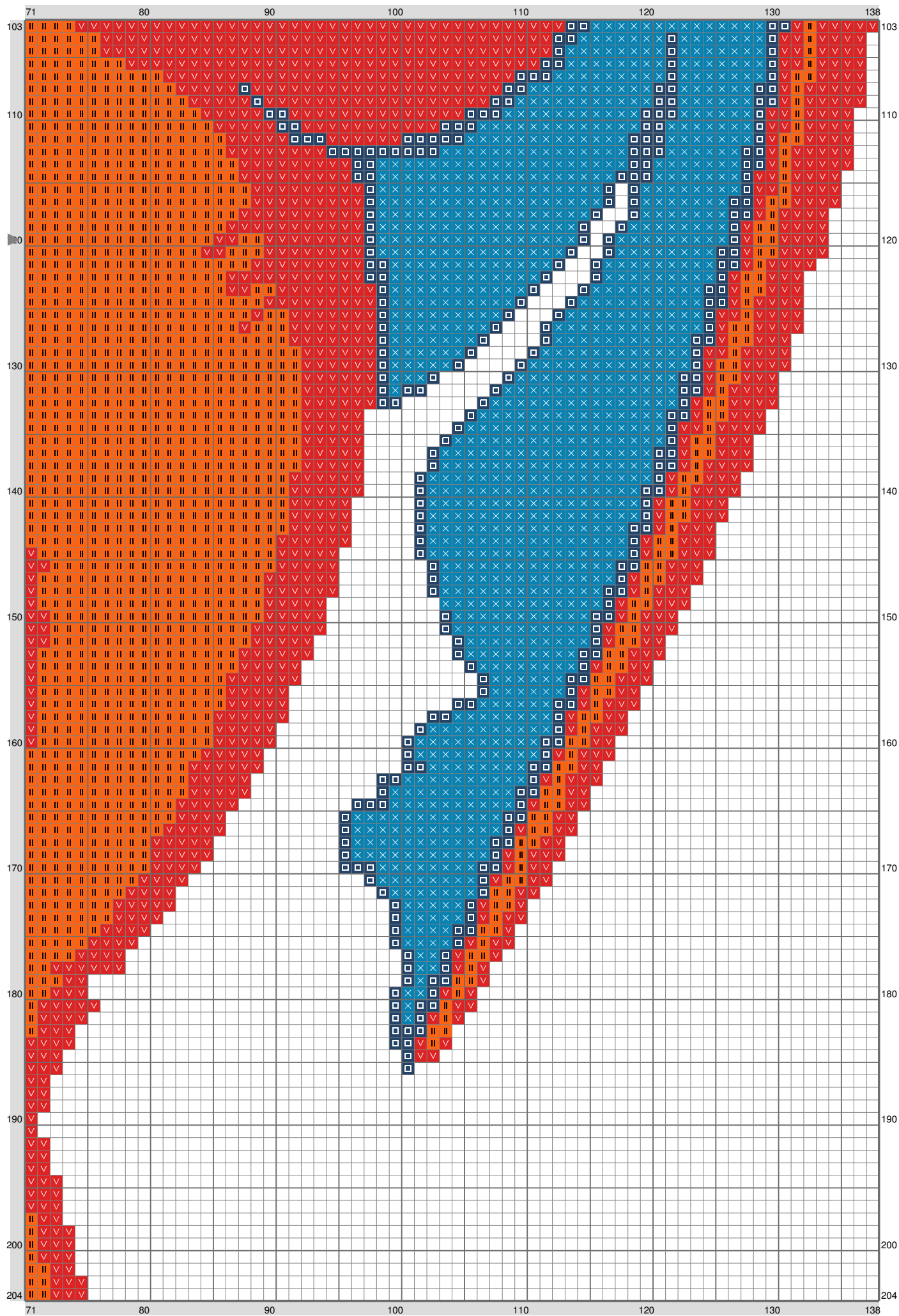
(This chart is printed using KG-Chart LE for Cross Stitch.)

Fire Born



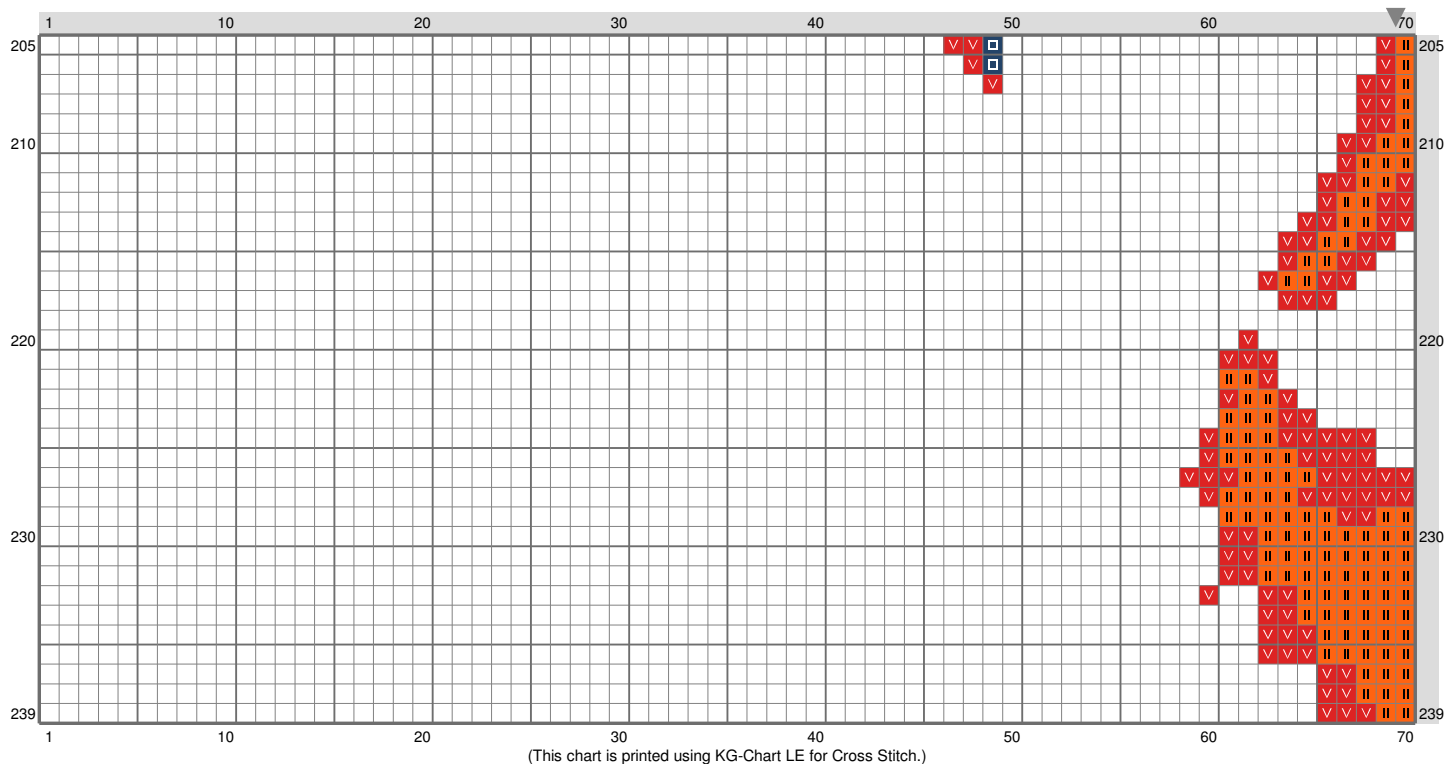
(This chart is printed using KG-Chart LE for Cross Stitch.)

Fire Born

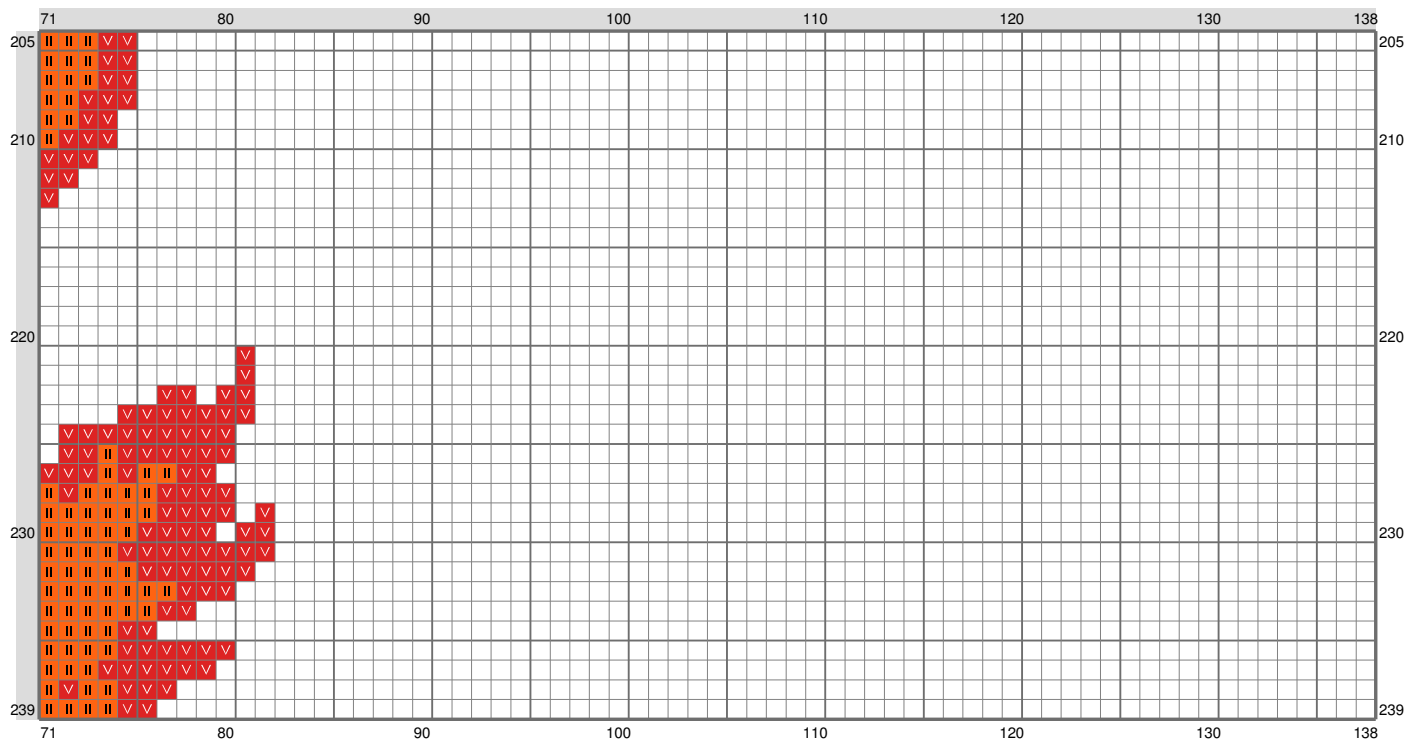


(This chart is printed using KG-Chart LE for Cross Stitch.)

Fire Born



Fire Born



Stitch Count: 138w x 239h

Finished Size: 25.03 cm x 43.36 cm (14 ct./inch)

Cloth: Aida

Cloth's Color: White

of colors: 4 Colors

Color Table (DMC)

Cross Stitch

✓	349	(5654 ct)
II	740	(3259 ct)
□	3750	(1307 ct)
×	3844	(3581 ct)