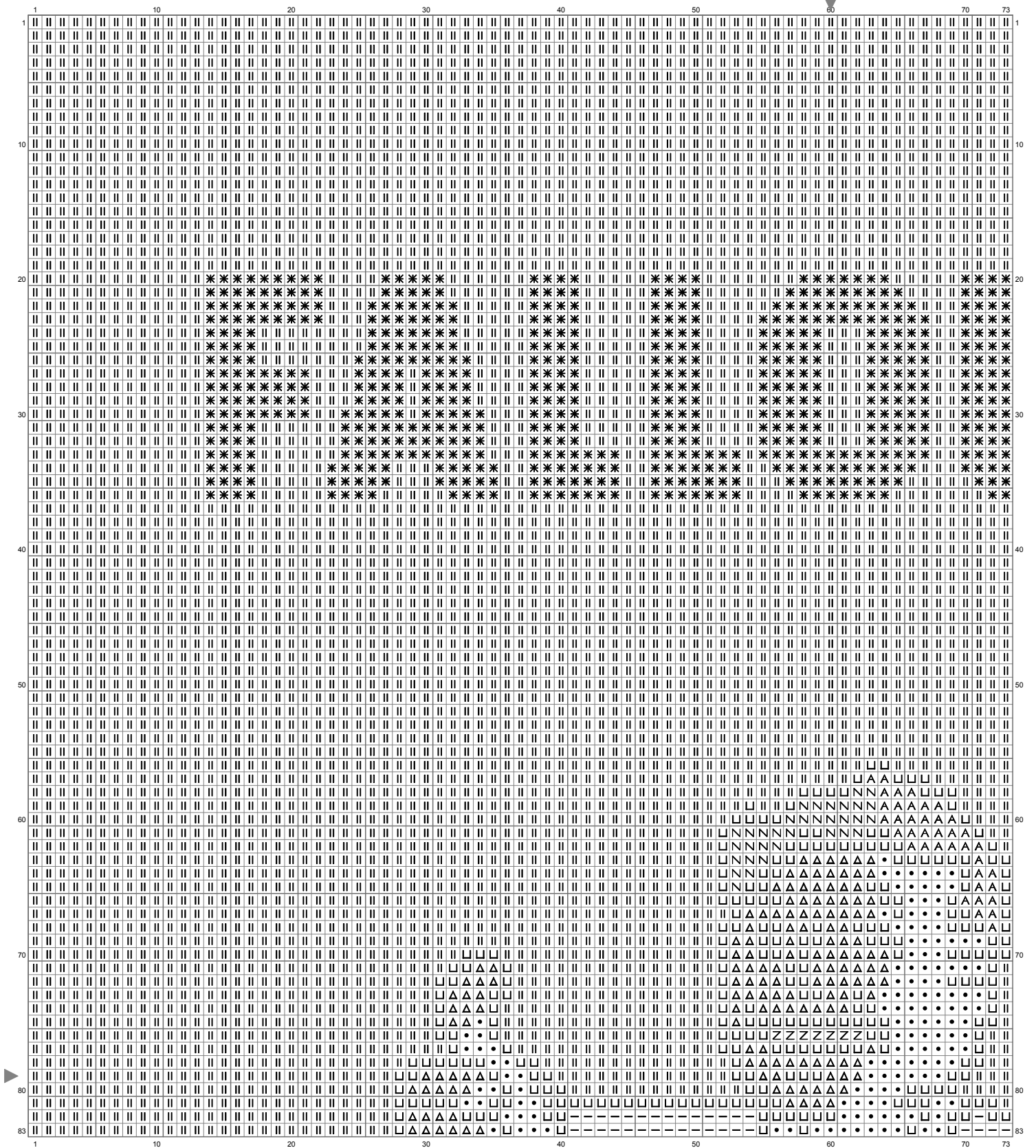
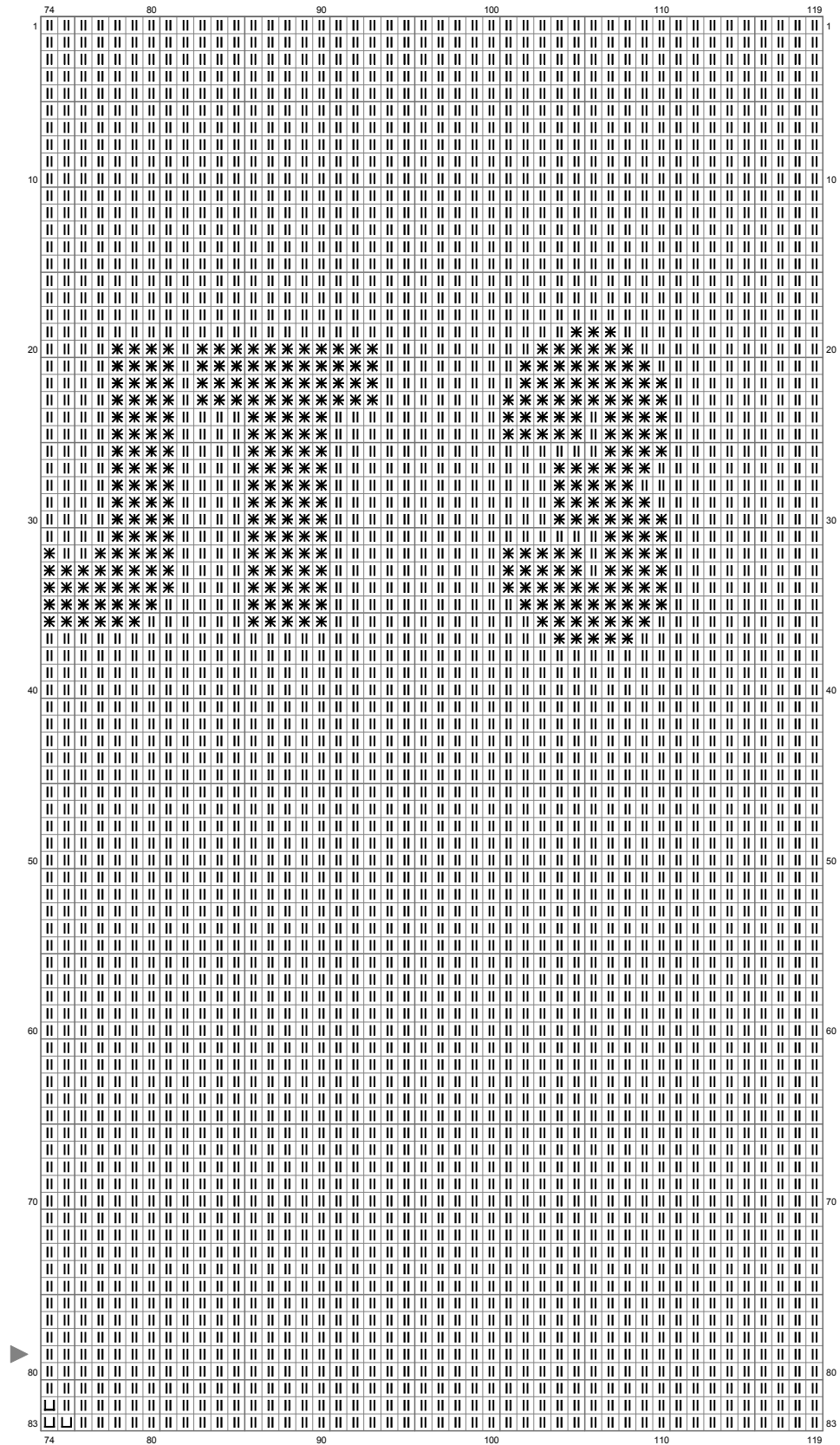


Untitled



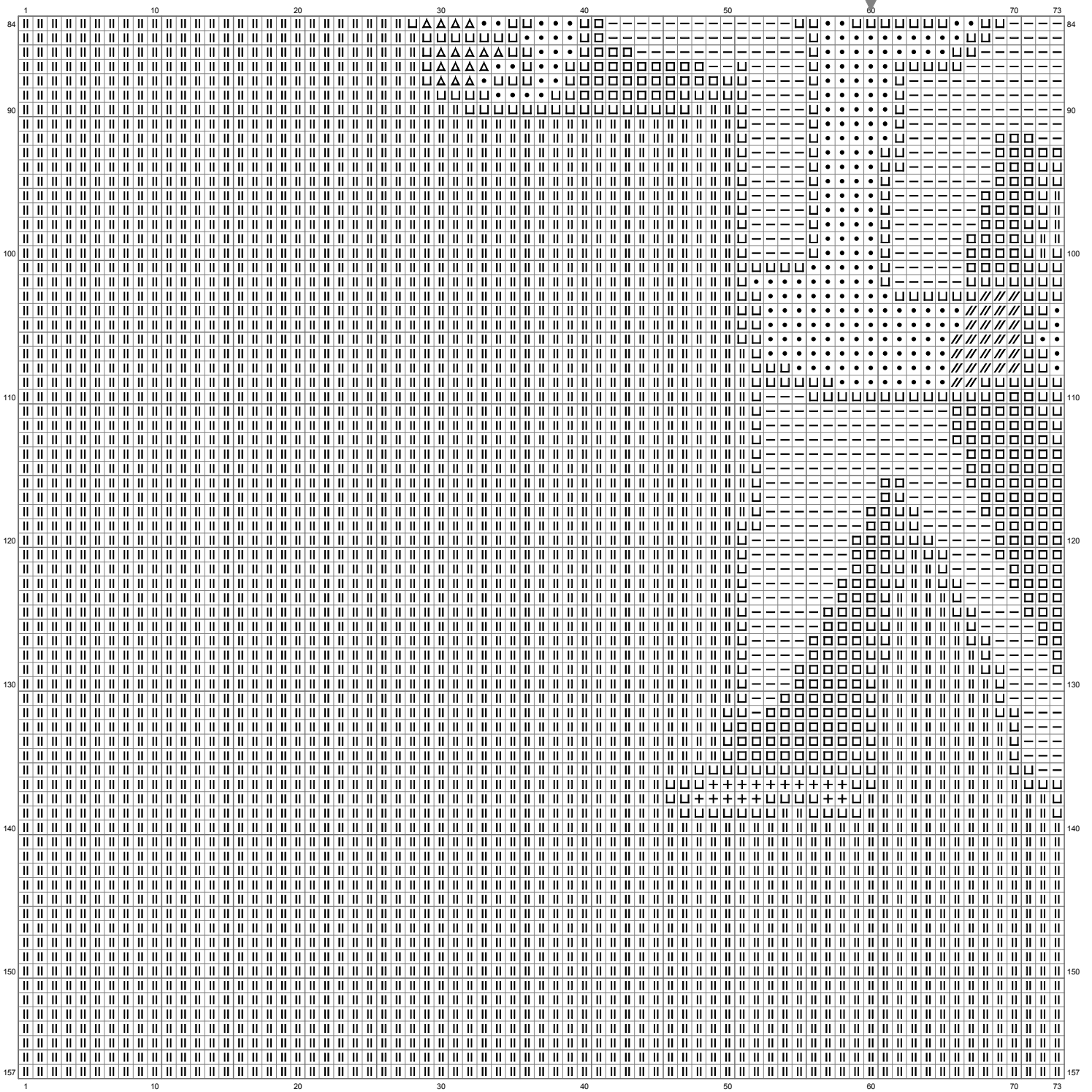
(This chart is printed using KG-Chart LE for Cross Stitch.)

Untitled

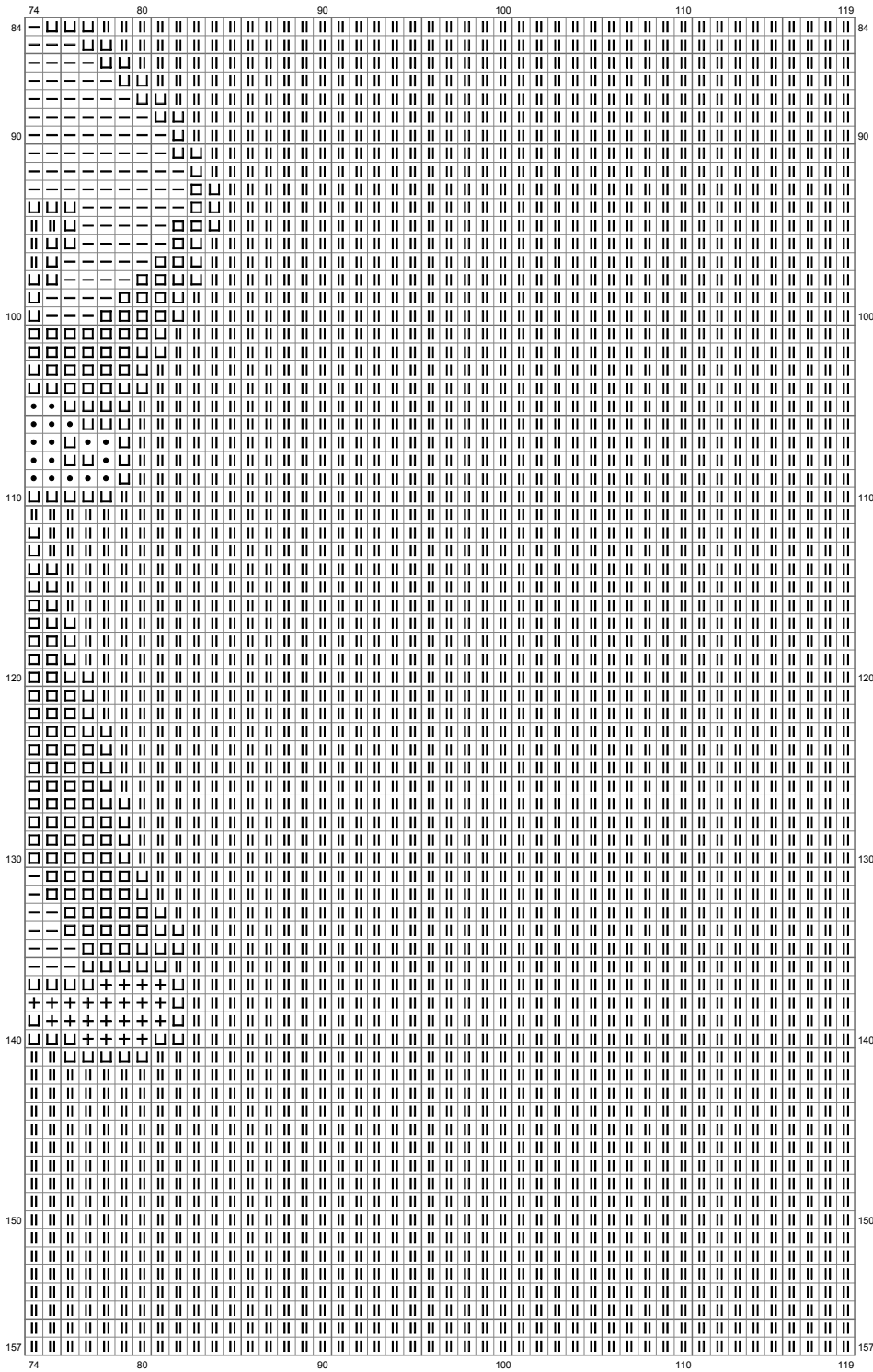


(This chart is printed using KG-Chart LE for Cross Stitch.)

Untitled



Untitled



(This chart is printed using KG-Chart LE for Cross Stitch.)

Stitch Count: 119w x 157h

Cloth: Aida Cloth's Color: White

Finished Size: 13.22 cm x 17.44 cm

(18 linen thread/cm)

Total 12 Colors

Color Table (DMC)

Cross Stitch

	500	(40 ct)
	924	(351 ct)
	3809	(600 ct)
	3787	(968 ct)
	834	(369 ct)
	772	(15357 ct)
	310	(721 ct)
	762	(7 ct)
	743	(33 ct)
	3820	(28 ct)
	3013	(39 ct)
	3047	(170 ct)