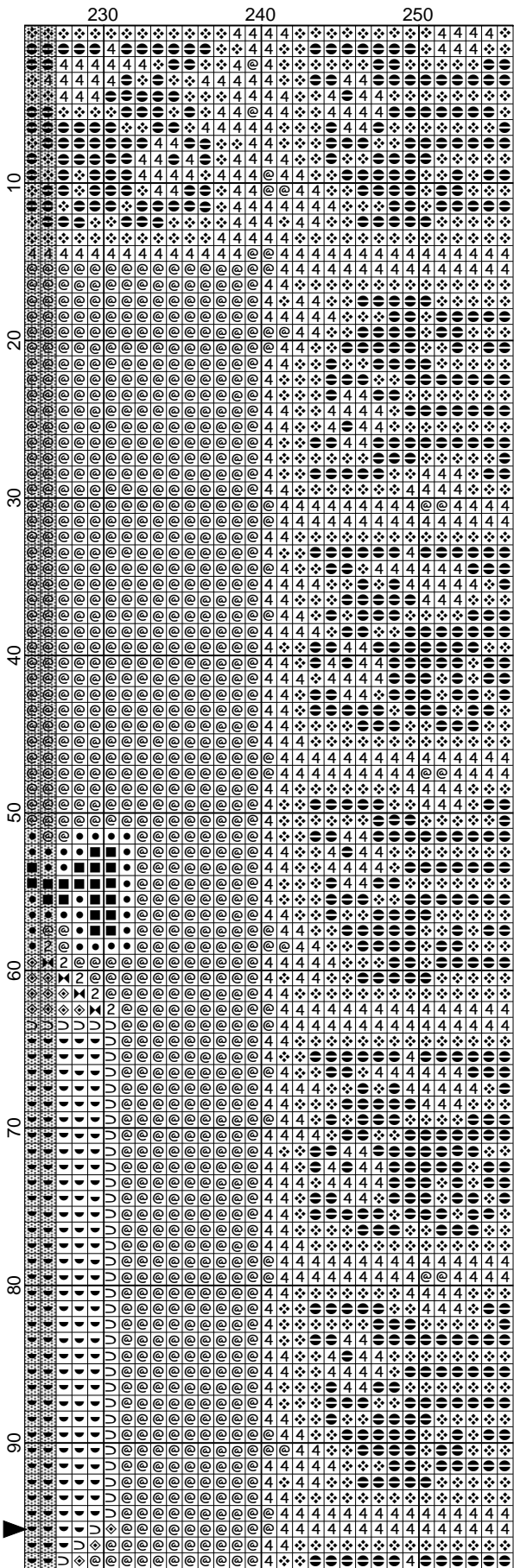
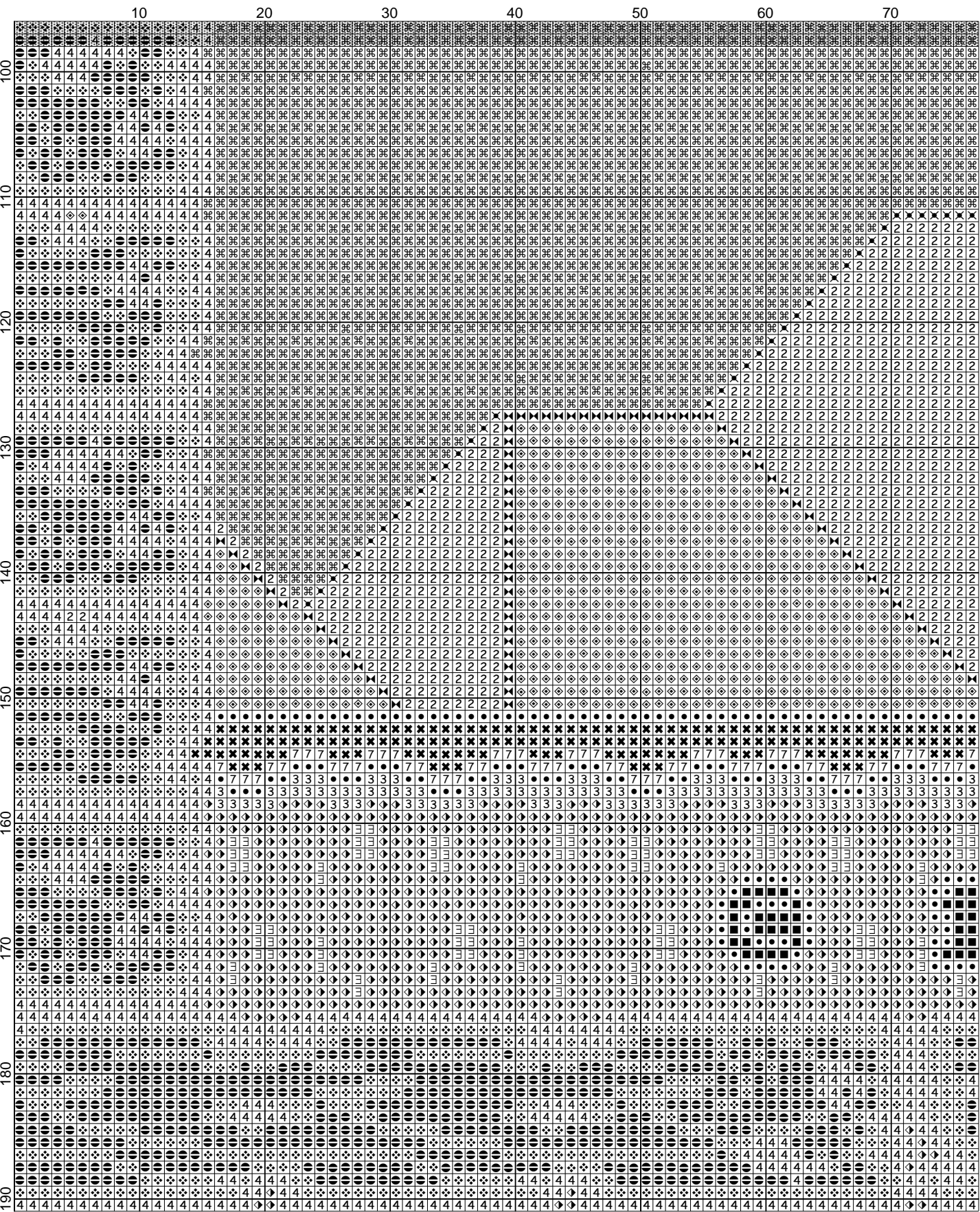
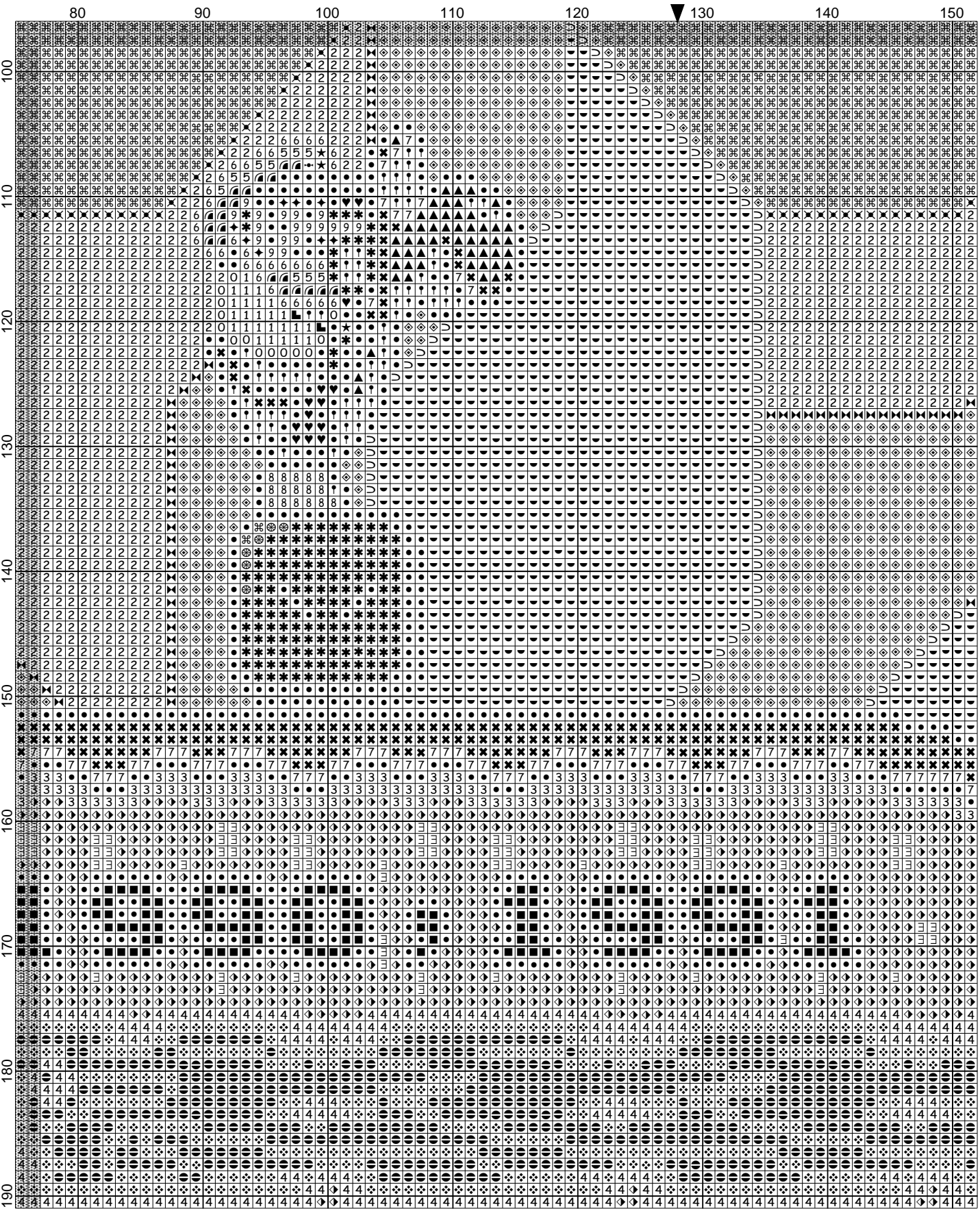


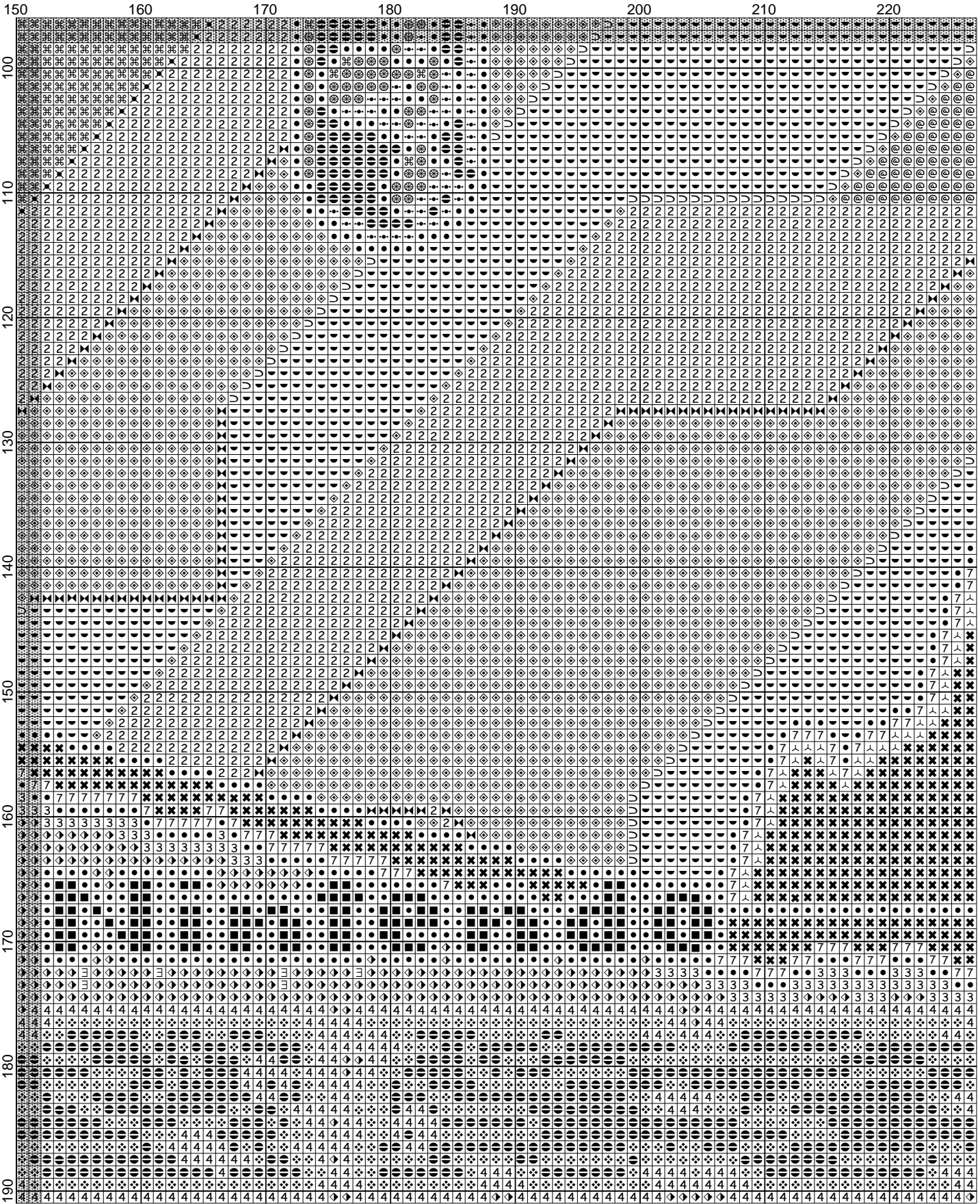
Title Screen by funkymonkey

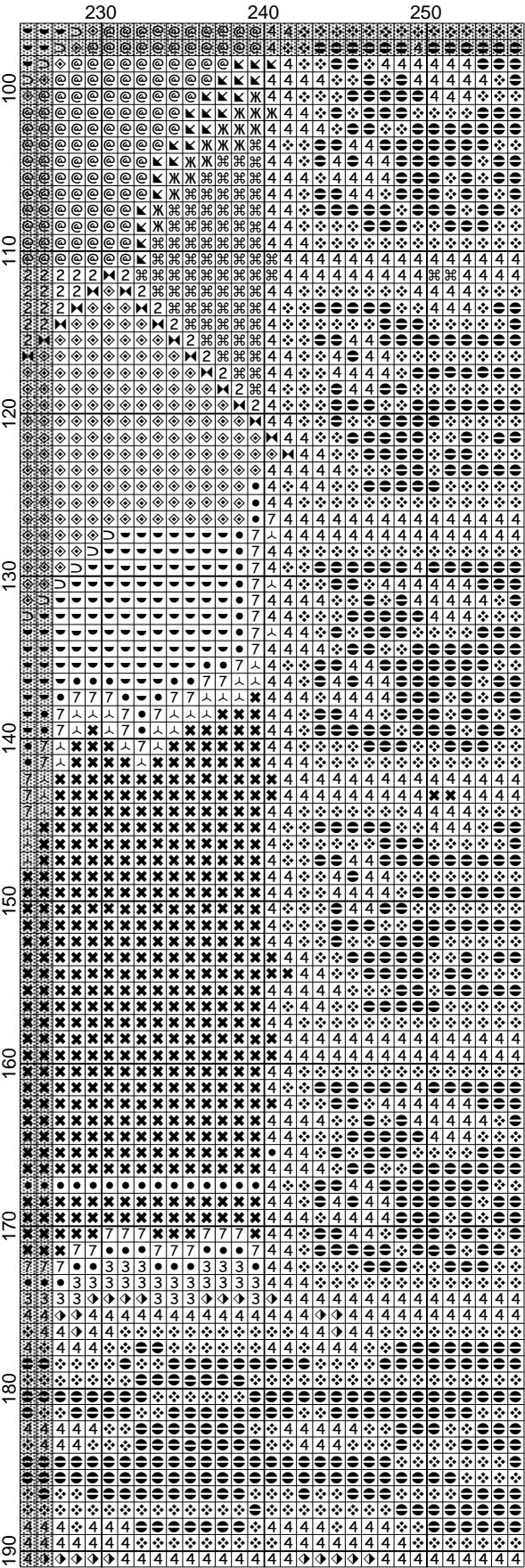


- Legend:
- 5 DMC-892
 - 0 DMC-3831
 - 0 DMC-797
 - 0 DMC-996
 - 0 DMC-3756
 - 0 DMC-3761
 - 1 DMC-806
 - 1 DMC-747
 - 1 DMC-3811
 - 1 DMC-598
 - 7 DMC-909
 - ▲ DMC-703
 - ✕ DMC-702
 - △ DMC-701
 - 3 DMC-830
 - 5 DMC-613
 - 5 DMC-3047
 - 5 DMC-3046
 - 5 DMC-746
 - 5 DMC-3852
 - 5 DMC-973
 - 5 DMC-444
 - 5 DMC-745
 - 5 DMC-743
 - 5 DMC-740
 - 9 DMC-967
 - 9 DMC-3340
 - 8 DMC-606
 - 8 DMC-919
 - 8 DMC-977
 - 8 DMC-975
 - 8 DMC-436
 - 6 DMC-898
 - ↑ DMC-5200
 - 2 DMC-822
 - 2 DMC-644
 - 2 DMC-642
 - 4 DMC-844
 - DMC-310









Title Screen

Author: funkymonkey
Grid Size: 256W x 191H
Design Area: 14.22" x 10.61" (256 x 191 stitches)

Legend:

	[2]	DMC	892	carnation - md	(11 stitches, 0.1 skeins)
	[2]	DMC	3831	raspberry - dk	(21 stitches, 0.1 skeins)
	[2]	DMC	797	royal blue	(14 stitches, 0.1 skeins)
	[2]	DMC	996	electric blue - md	(1446 stitches, 0.5 skeins)
	[2]	DMC	3756	baby blue - ul vy lt	(5078 stitches, 1.6 skeins)
	[2]	DMC	3761	sky blue - lt	(7104 stitches, 2.2 skeins)
	[2]	DMC	806	peacock blue - dk	(25 stitches, 0.1 skeins)
	[2]	DMC	747	sky blue - vy lt	(148 stitches, 0.1 skeins)
	[2]	DMC	3811	turquoise - vy lt	(163 stitches, 0.1 skeins)
	[2]	DMC	598	turquoise - lt	(2 stitches, 0.1 skeins)
	[2]	DMC	909	emerald green - vy dk	(272 stitches, 0.1 skeins)
	[2]	DMC	703	chartreuse	(52 stitches, 0.1 skeins)
	[2]	DMC	702	kelly green	(3201 stitches, 1.0 skeins)
	[2]	DMC	701	christmas green - lt	(64 stitches, 0.1 skeins)
	[2]	DMC	830	golden olive - dk	(319 stitches, 0.1 skeins)
	[2]	DMC	613	drab brown - vy lt	(223 stitches, 0.1 skeins)
	[2]	DMC	3047	yellow beige - lt	(303 stitches, 0.1 skeins)
	[2]	DMC	3046	yellow beige - md	(190 stitches, 0.1 skeins)
	[2]	DMC	746	off white	(110 stitches, 0.1 skeins)
	[2]	DMC	3852	straw - vy dk	(57 stitches, 0.1 skeins)
	[2]	DMC	973	canary - br	(59 stitches, 0.1 skeins)
	[2]	DMC	444	lemon - dk	(1167 stitches, 0.4 skeins)
	[2]	DMC	745	yellow - lt pl	(5011 stitches, 1.6 skeins)
	[2]	DMC	743	yellow - md	(3 stitches, 0.1 skeins)
	[2]	DMC	740	tangerine	(14 stitches, 0.1 skeins)
	[2]	DMC	967	apricot - vy lt	(18 stitches, 0.1 skeins)
	[2]	DMC	3340	apricot - md	(8 stitches, 0.1 skeins)
	[2]	DMC	606	burnt orange-red	(595 stitches, 0.2 skeins)
	[2]	DMC	919	red copper	(16 stitches, 0.1 skeins)
	[2]	DMC	977	golden brown - lt	(4648 stitches, 1.5 skeins)
	[2]	DMC	975	golden brown - dk	(171 stitches, 0.1 skeins)
	[2]	DMC	436	tan	(1875 stitches, 0.6 skeins)
	[2]	DMC	898	coffee brown - vy dk	(34 stitches, 0.1 skeins)
	[2]	DMC	5200	snow white	(73 stitches, 0.1 skeins)
	[2]	DMC	822	beige gray - lt	(2902 stitches, 0.9 skeins)
	[2]	DMC	644	beige gray - md	(3452 stitches, 1.1 skeins)
	[2]	DMC	642	beige gray - dk	(2960 stitches, 0.9 skeins)
	[2]	DMC	844	beaver gray - ul dk	(3233 stitches, 1.0 skeins)
	[2]	DMC	310	black	(3854 stitches, 1.2 skeins)