

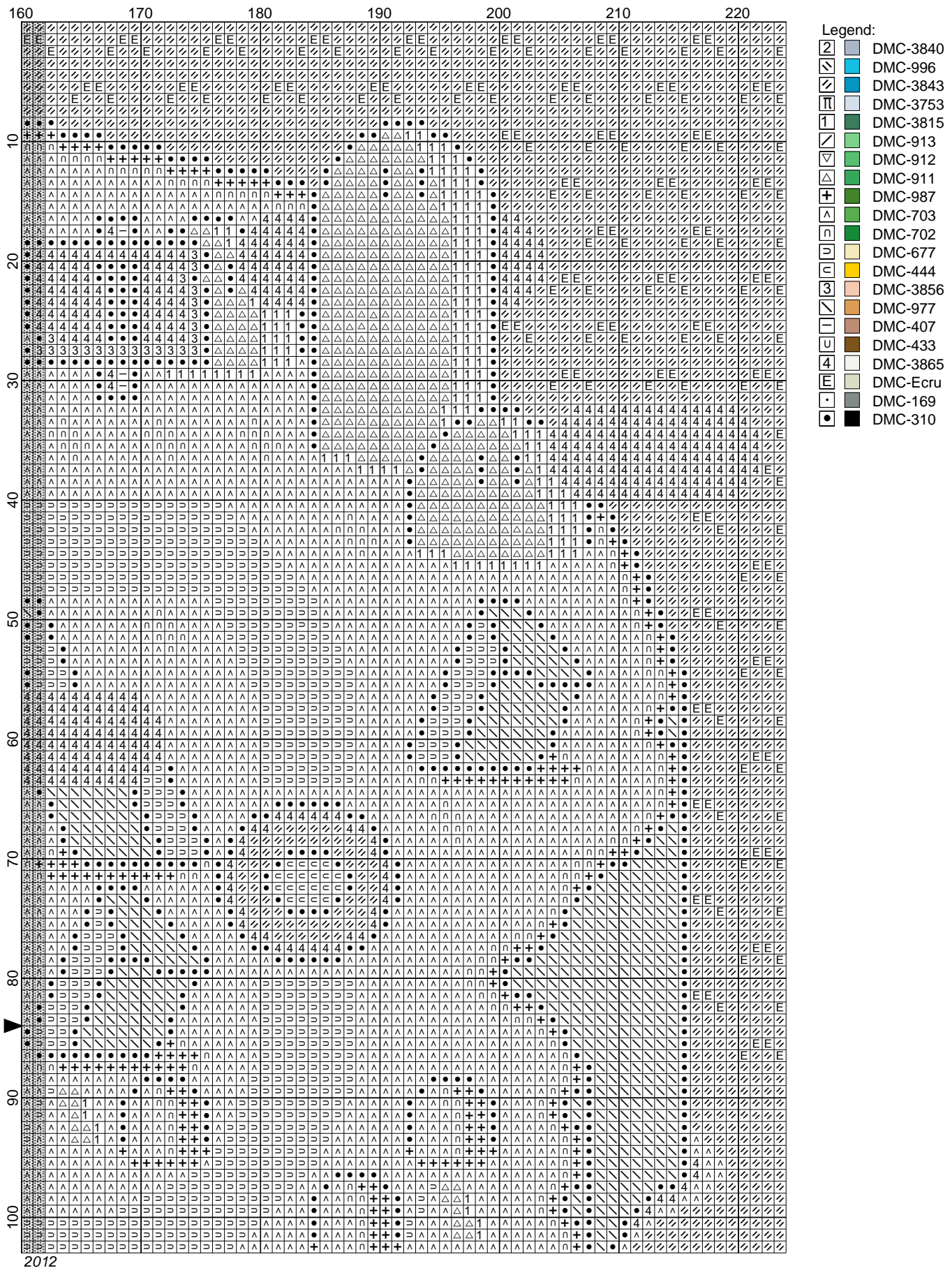
Map - Yoshi's Island by funkymonkey



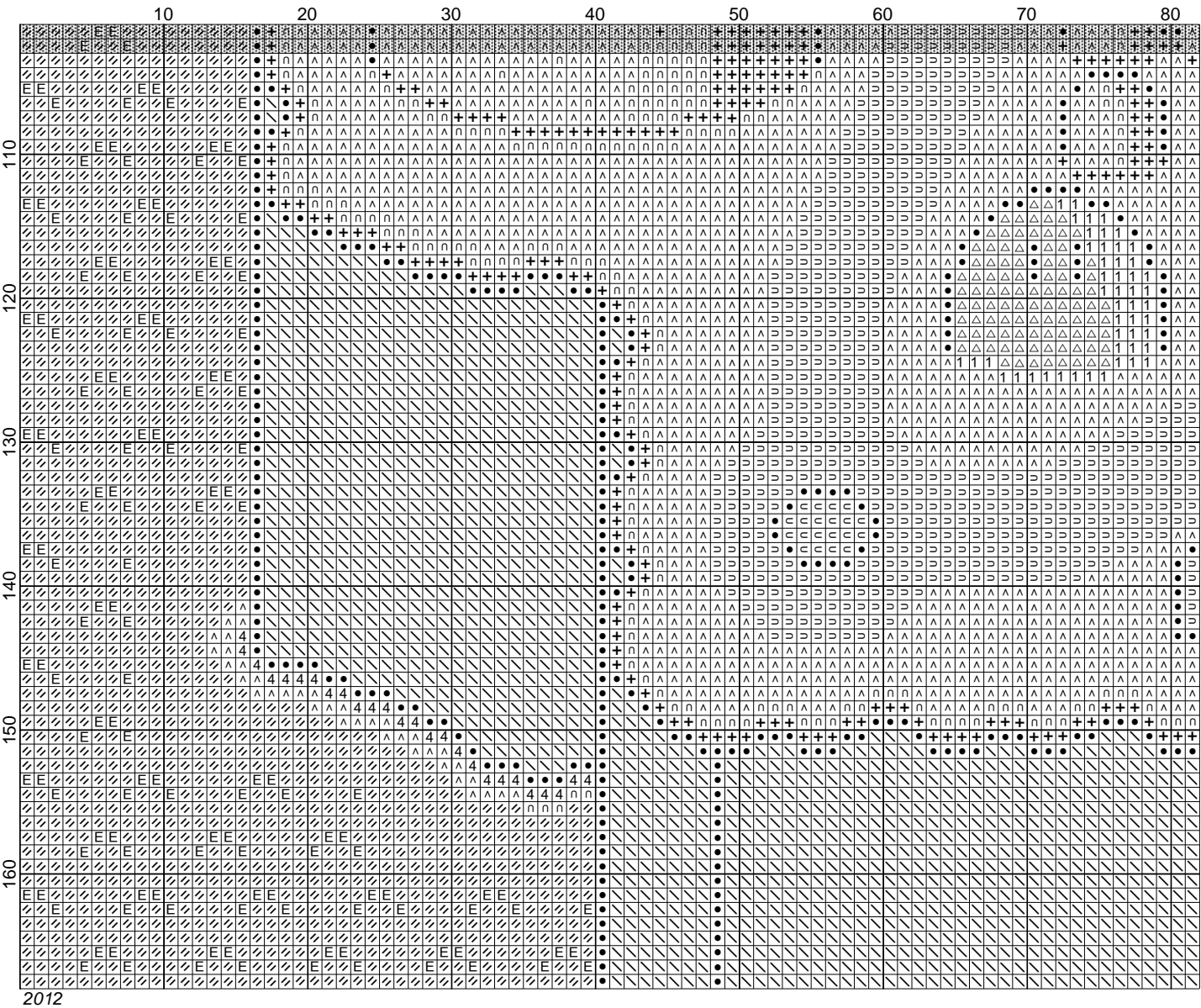
Map - Yoshi's Island by funkymonkey



Map - Yoshi's Island by funkymonkey

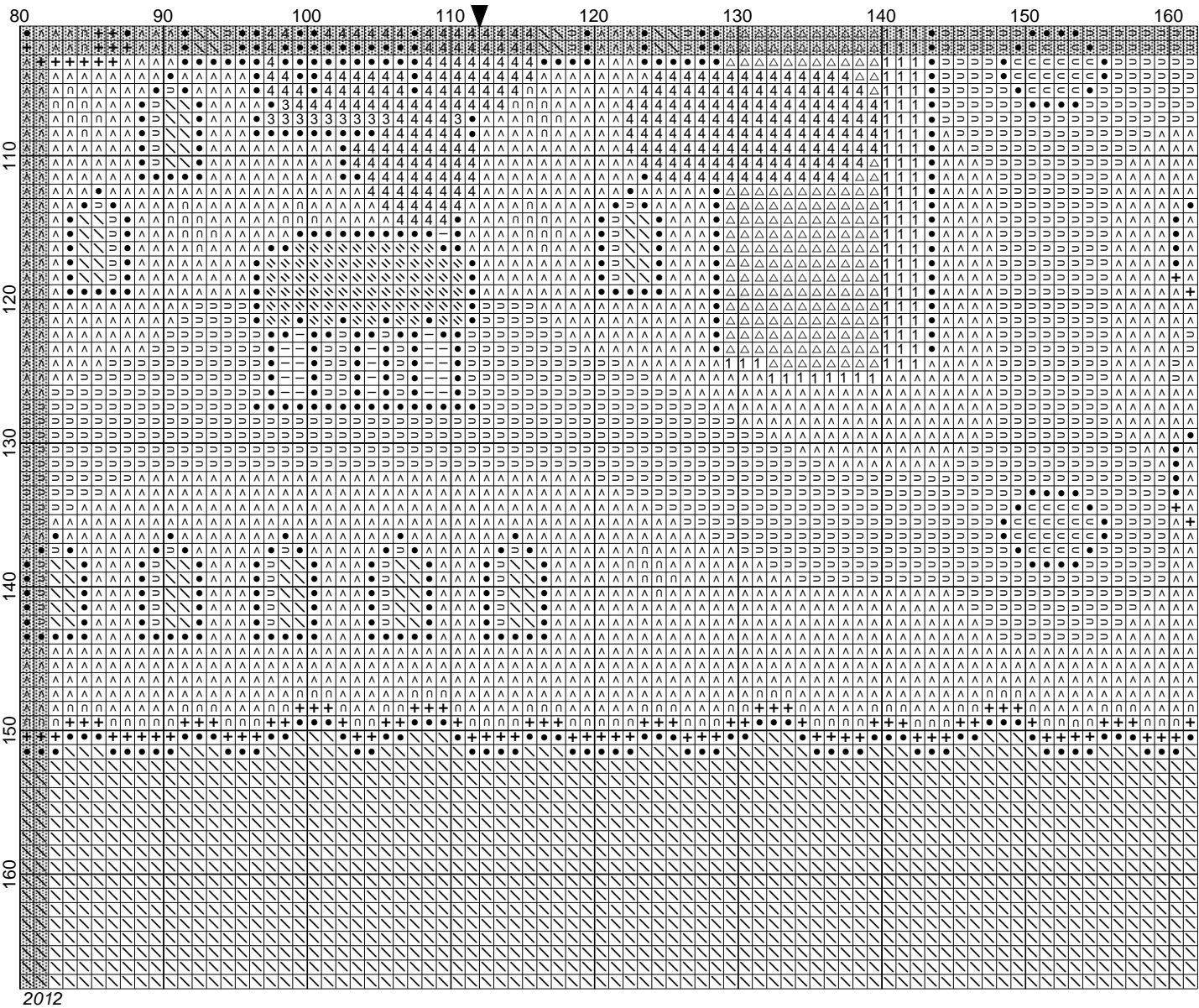


Map - Yoshi's Island by funkymonkey

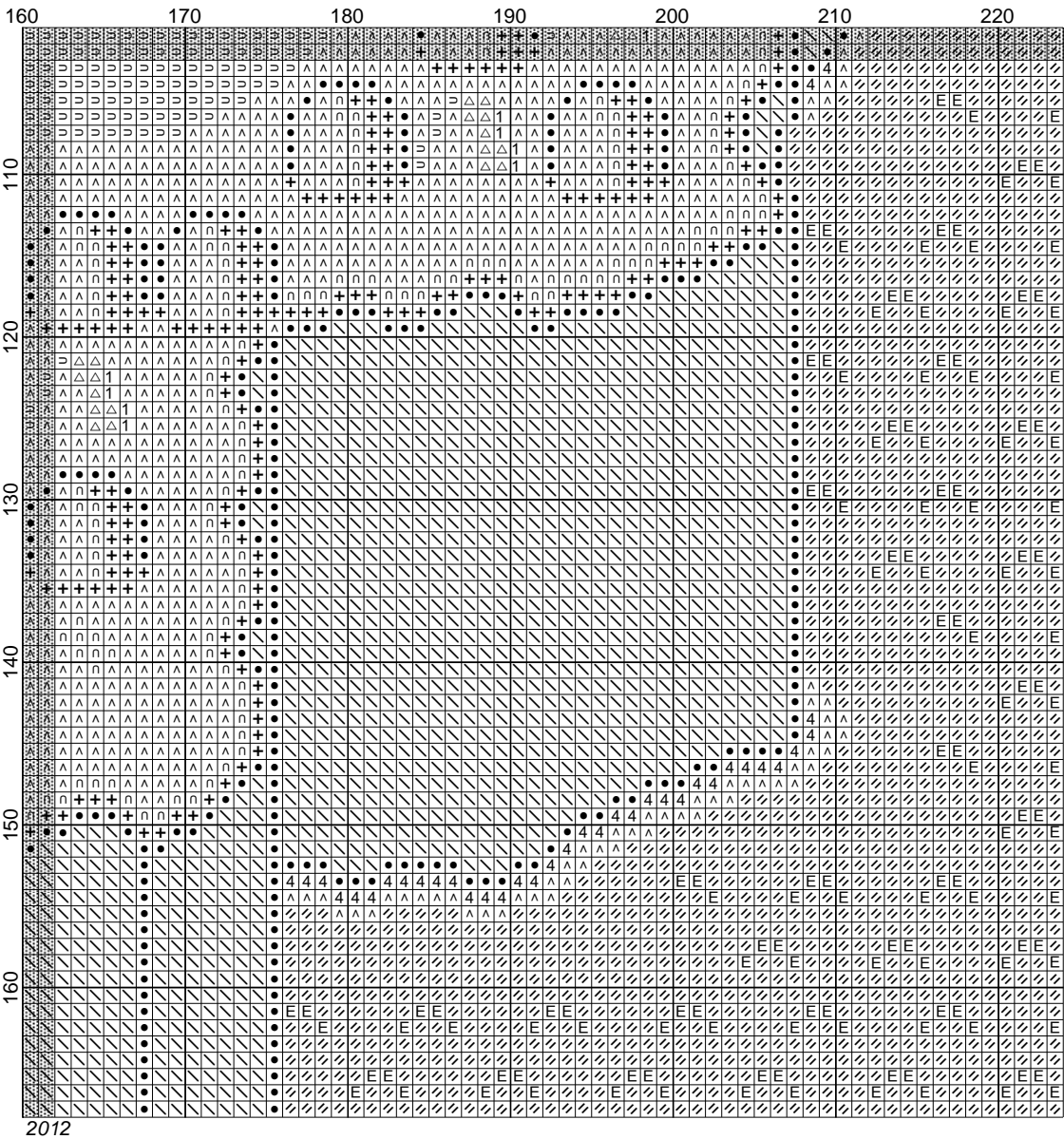


2012

Map - Yoshi's Island by funkymonkey



Map - Yoshi's Island by funkymonkey



Map - Yoshi's Island

Author: funkymonkey
Copyright: 2012
Grid Size: 224W x 168H
Design Area: 16.00" x 12.00" (224 x 168 stitches)

Legend:

	[2]	DMC	3840	lavender blue - lt	(17 stitches, 0.1 skeins)
	[2]	DMC	996	electric blue - md	(76 stitches, 0.1 skeins)
	[2]	DMC	3843	electric blue	(5736 stitches, 2.3 skeins)
	[2]	DMC	3753	antique blue - ul vy	(12 stitches, 0.1 skeins)
	[2]	DMC	3815	celadon green - dk	(1076 stitches, 0.4 skeins)
	[2]	DMC	913	nile green - md	(6 stitches, 0.1 skeins)
	[2]	DMC	912	emerald green - lt	(21 stitches, 0.1 skeins)
	[2]	DMC	911	emerald green - md	(3160 stitches, 1.3 skeins)
	[2]	DMC	987	forest green - dk	(1242 stitches, 0.5 skeins)
	[2]	DMC	703	chartreuse	(7970 stitches, 3.2 skeins)
	[2]	DMC	702	kelly green	(1605 stitches, 0.7 skeins)
	[2]	DMC	677	old gold - vy lt	(3000 stitches, 1.2 skeins)
	[2]	DMC	444	lemon - dk	(80 stitches, 0.1 skeins)
	[2]	DMC	3856	mahogany - ul vy lt	(91 stitches, 0.1 skeins)
	[2]	DMC	977	golden brown - lt	(7409 stitches, 3.0 skeins)
	[2]	DMC	407	desert sand - dk	(62 stitches, 0.1 skeins)
	[2]	DMC	433	brown - md	(10 stitches, 0.1 skeins)
	[2]	DMC	3865	winter white	(1856 stitches, 0.8 skeins)
	[2]	DMC	Ecru	ecru	(605 stitches, 0.2 skeins)
	[2]	DMC	169	pewter - lt	(5 stitches, 0.1 skeins)
	[2]	DMC	310	black	(3593 stitches, 1.5 skeins)