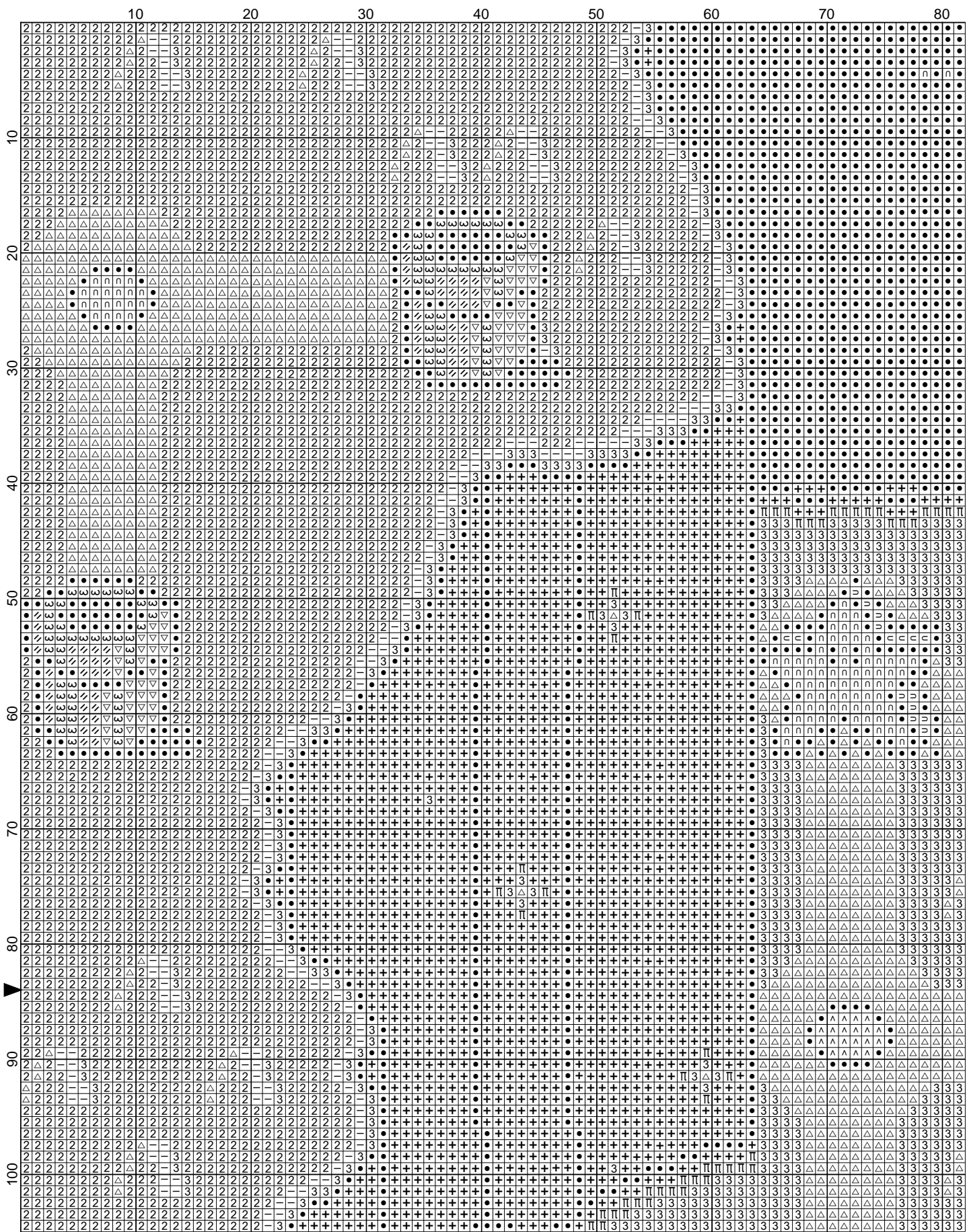
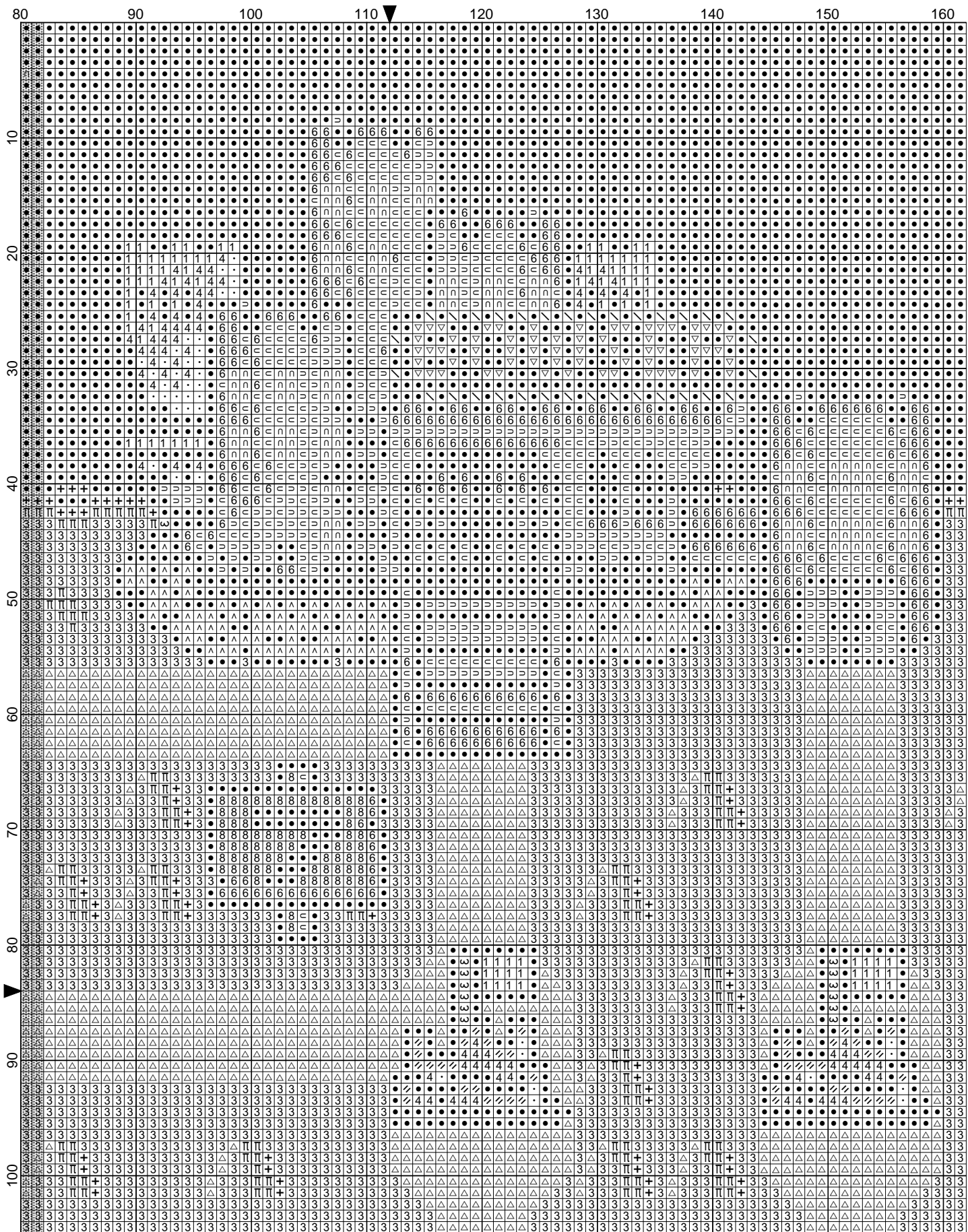


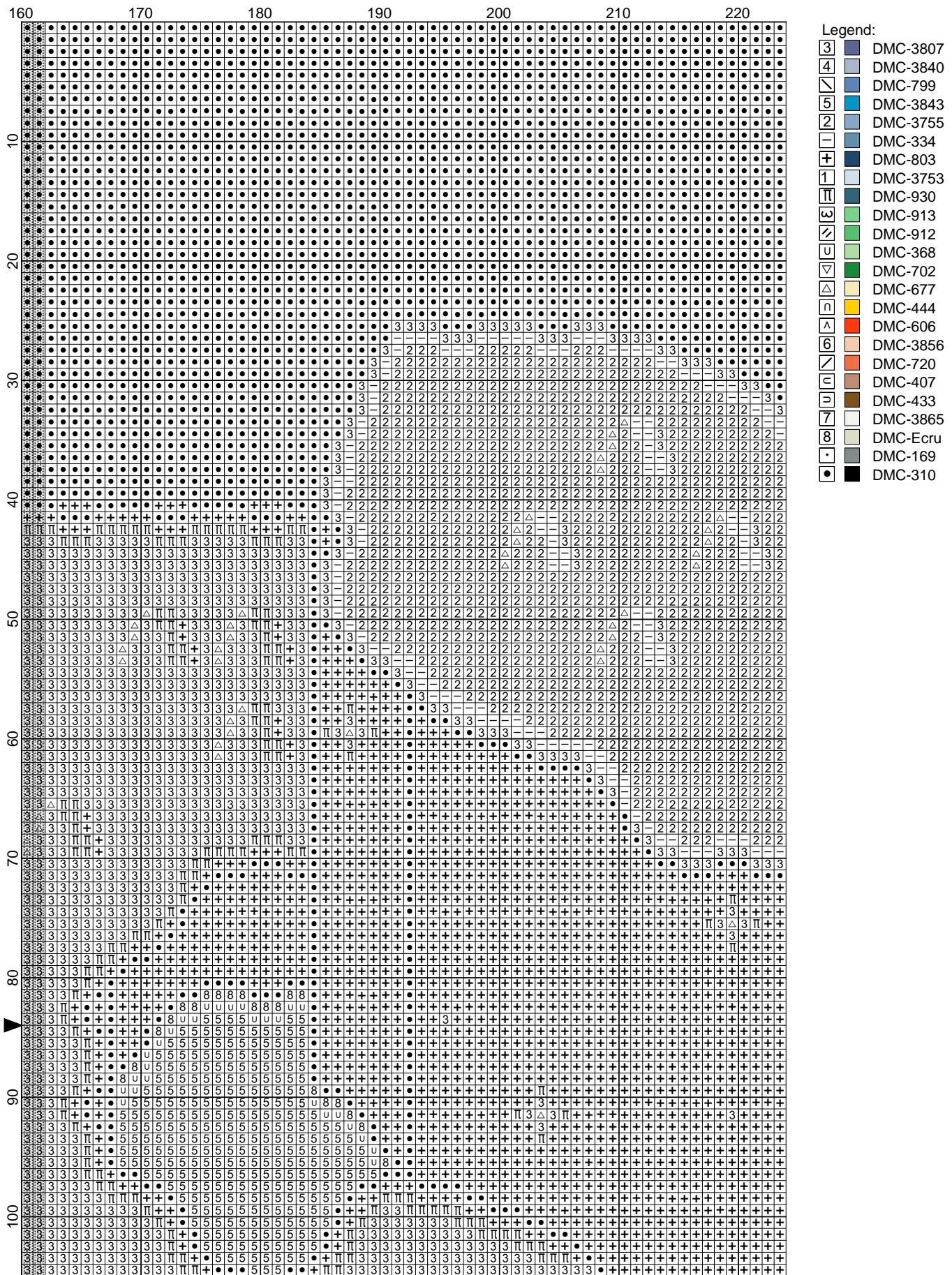
Map - Bowzer by funkymonkey



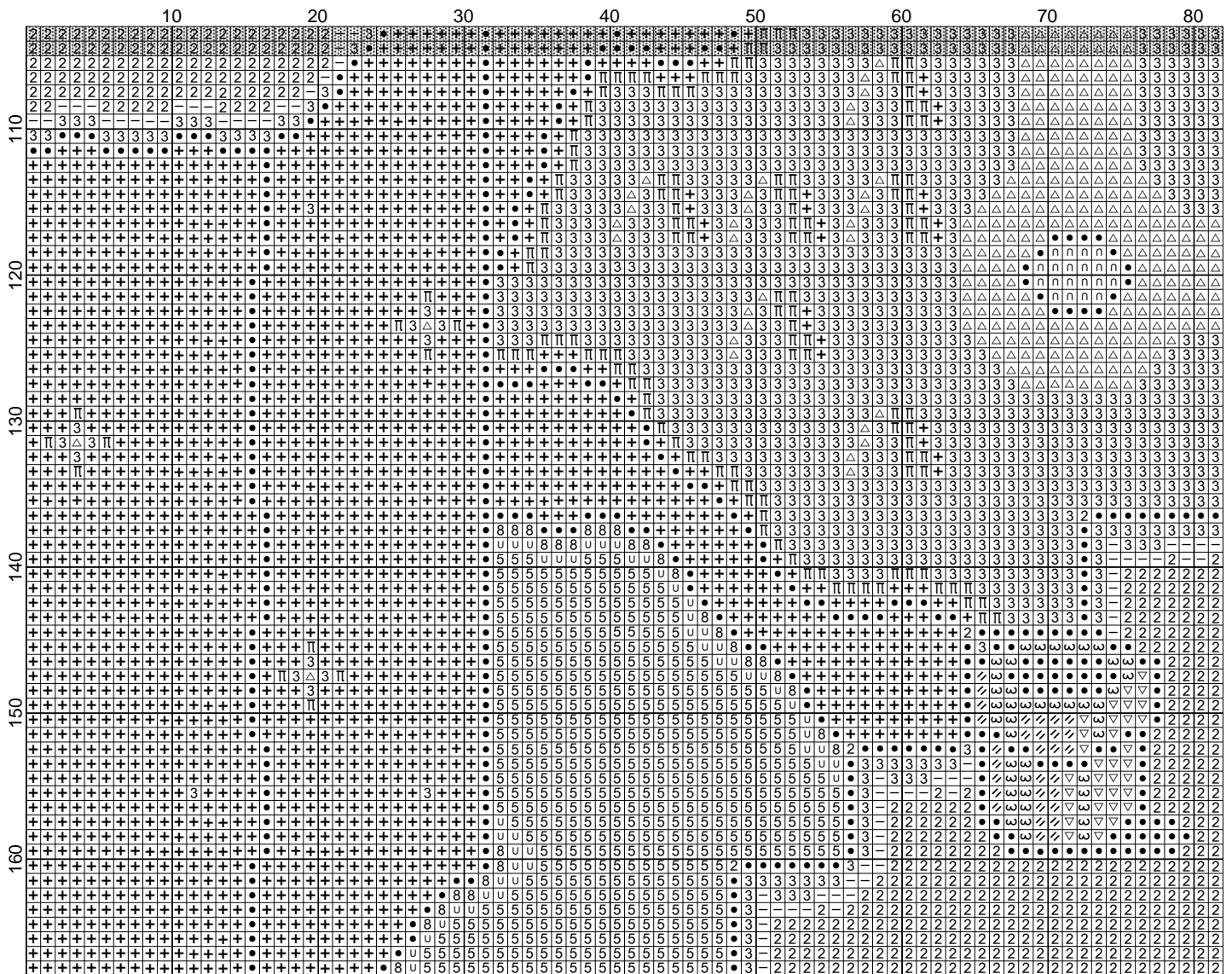
Map - Bowzer by funkymonkey



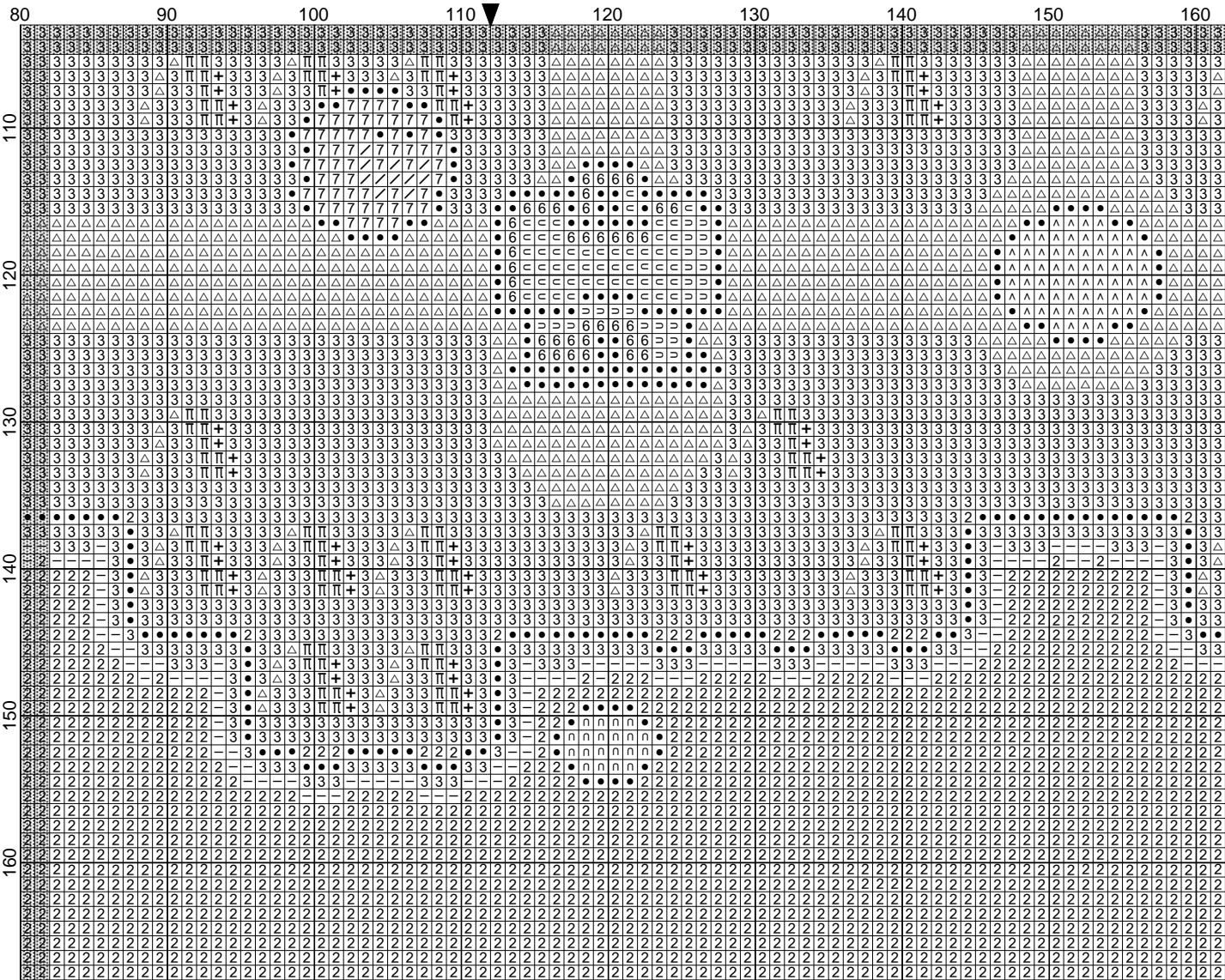
Map - Bowser by funkymonkey



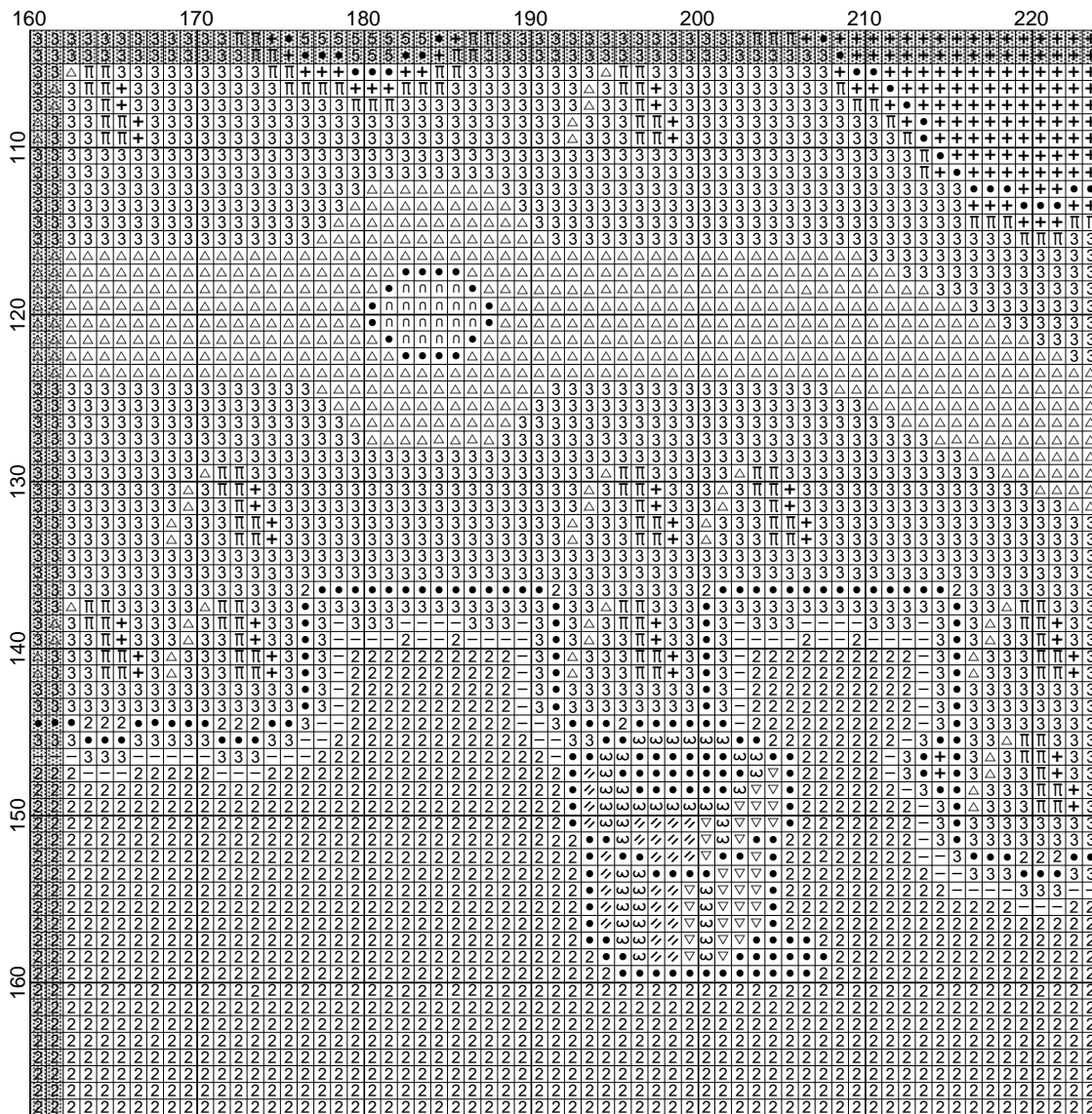
Map - Bowzer by funkymonkey



Map - Bowser by funkymonkey



























Map - Bowser by funkymonkey



Map - Bowzer

Author: funkymonkey
Grid Size: 224W x 168H
Design Area: 16.00" x 12.00" (224 x 168 stitches)

Legend:

	[2]	DMC	3807	cornflower blue	(7910 stitches, 3.2 skeins)
	[2]	DMC	3840	lavender blue - lt	(81 stitches, 0.1 skeins)
	[2]	DMC	799	delft blue - md	(32 stitches, 0.1 skeins)
	[2]	DMC	3843	electric blue	(815 stitches, 0.3 skeins)
	[2]	DMC	3755	baby blue	(7176 stitches, 2.9 skeins)
	[2]	DMC	334	baby blue - md	(665 stitches, 0.3 skeins)
	[2]	DMC	803	baby blue - ul vy dk	(5878 stitches, 2.4 skeins)
	[2]	DMC	3753	antique blue - ul vy	(88 stitches, 0.1 skeins)
	[2]	DMC	930	antique blue - dk	(695 stitches, 0.3 skeins)
	[2]	DMC	913	nile green - md	(189 stitches, 0.1 skeins)
	[2]	DMC	912	emerald green - lt	(162 stitches, 0.1 skeins)
	[2]	DMC	368	pistachio green - lt	(76 stitches, 0.1 skeins)
	[2]	DMC	702	kelly green	(201 stitches, 0.1 skeins)
	[2]	DMC	677	old gold - vy lt	(3916 stitches, 1.6 skeins)
	[2]	DMC	444	lemon - dk	(298 stitches, 0.1 skeins)
	[2]	DMC	606	burnt orange-red	(198 stitches, 0.1 skeins)
	[2]	DMC	3856	mahogany - ul vy lt	(408 stitches, 0.2 skeins)
	[2]	DMC	720	orange spice - dk	(11 stitches, 0.1 skeins)
	[2]	DMC	407	desert sand - dk	(458 stitches, 0.2 skeins)
	[2]	DMC	433	brown - md	(308 stitches, 0.1 skeins)
	[2]	DMC	3865	winter white	(57 stitches, 0.1 skeins)
	[2]	DMC	Ecru	ecru	(123 stitches, 0.1 skeins)
	[2]	DMC	169	pewter - lt	(41 stitches, 0.1 skeins)
	[2]	DMC	310	black	(7846 stitches, 3.2 skeins)