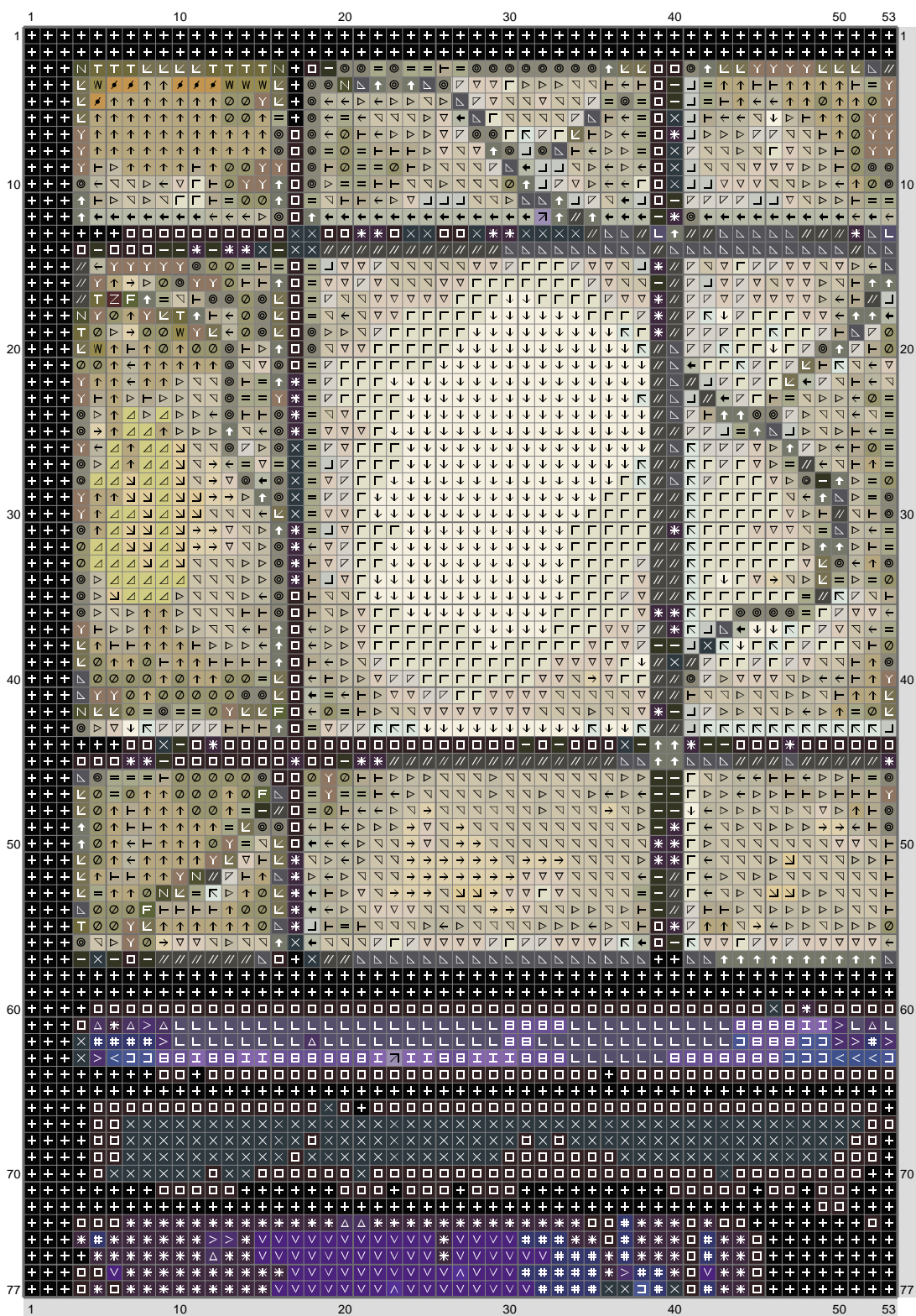
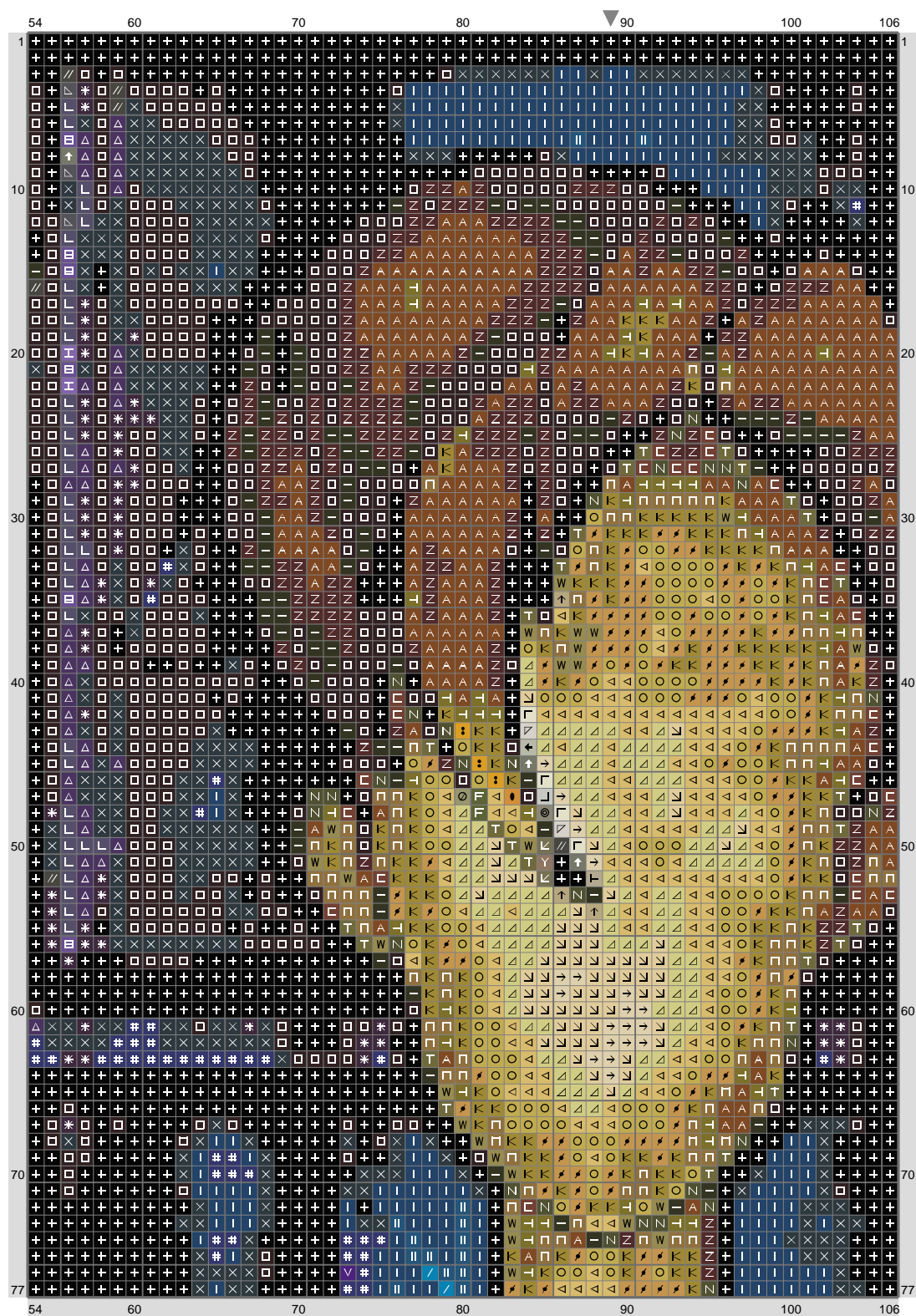


# Untitled

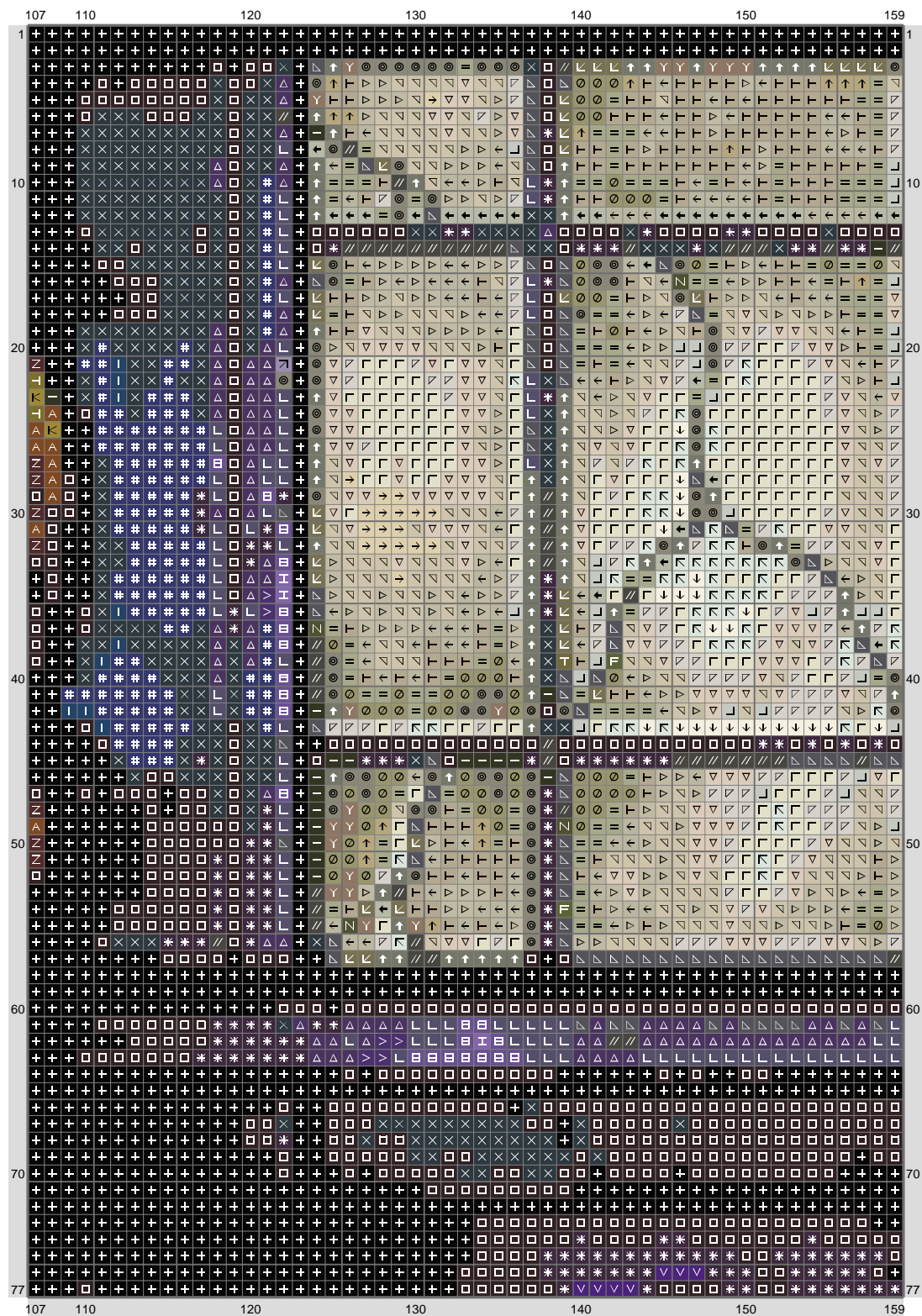


(This chart is printed using KG-Chart LE for Cross Stitch.)

# Untitled

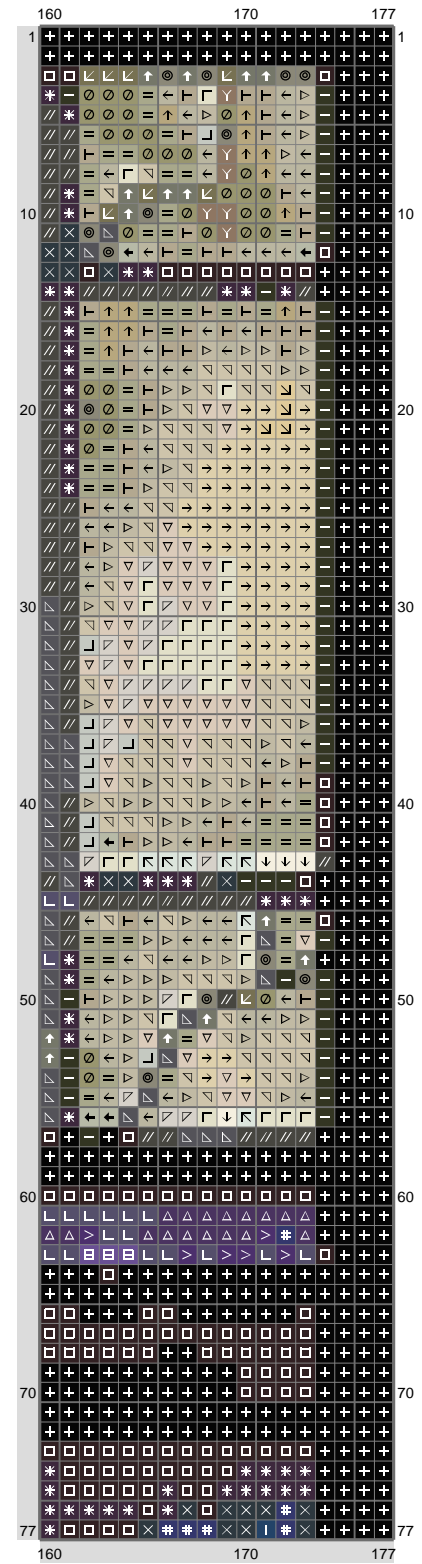


# Untitled



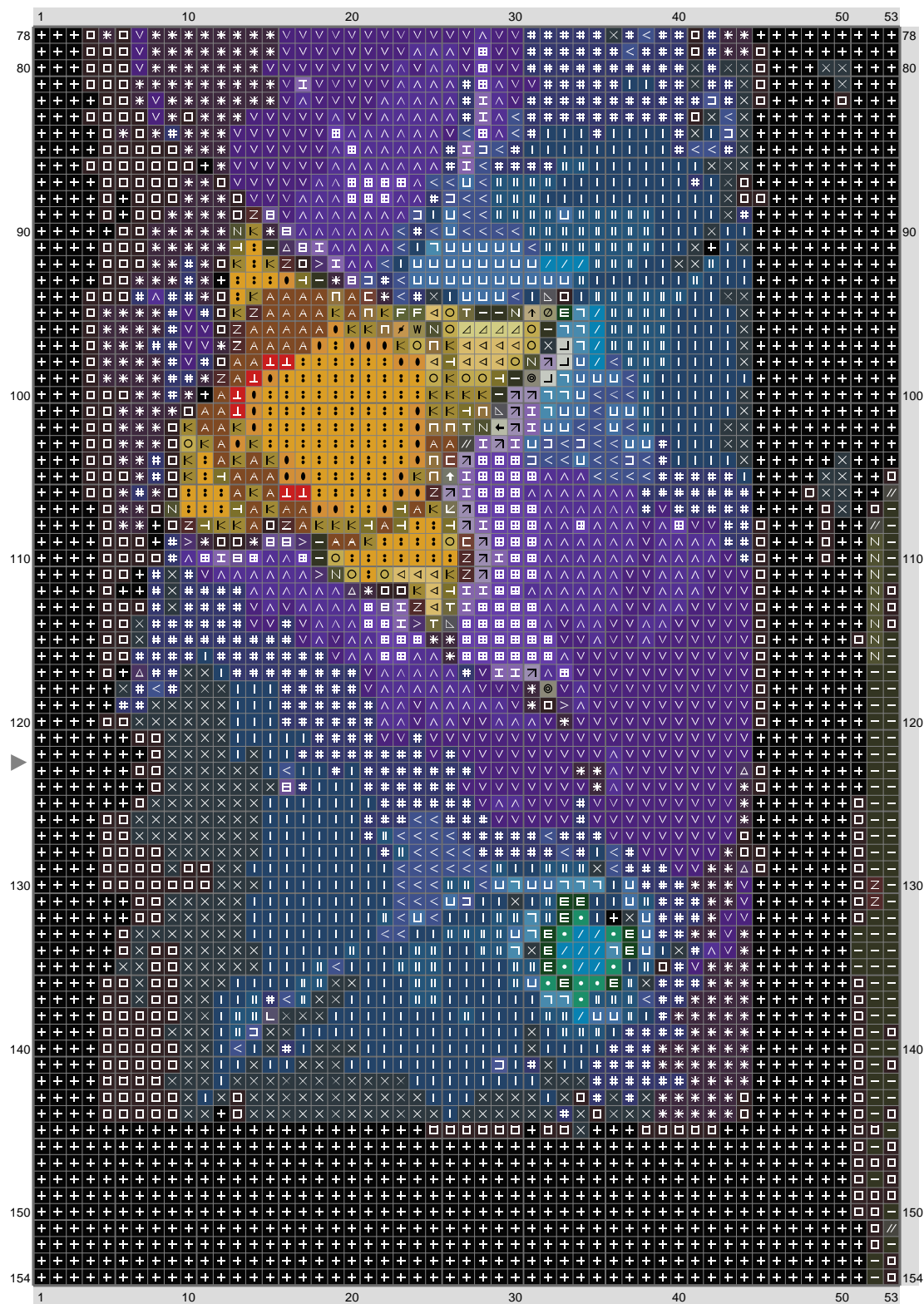
(This chart is printed using KG-Chart LE for Cross Stitch.)

# Untitled



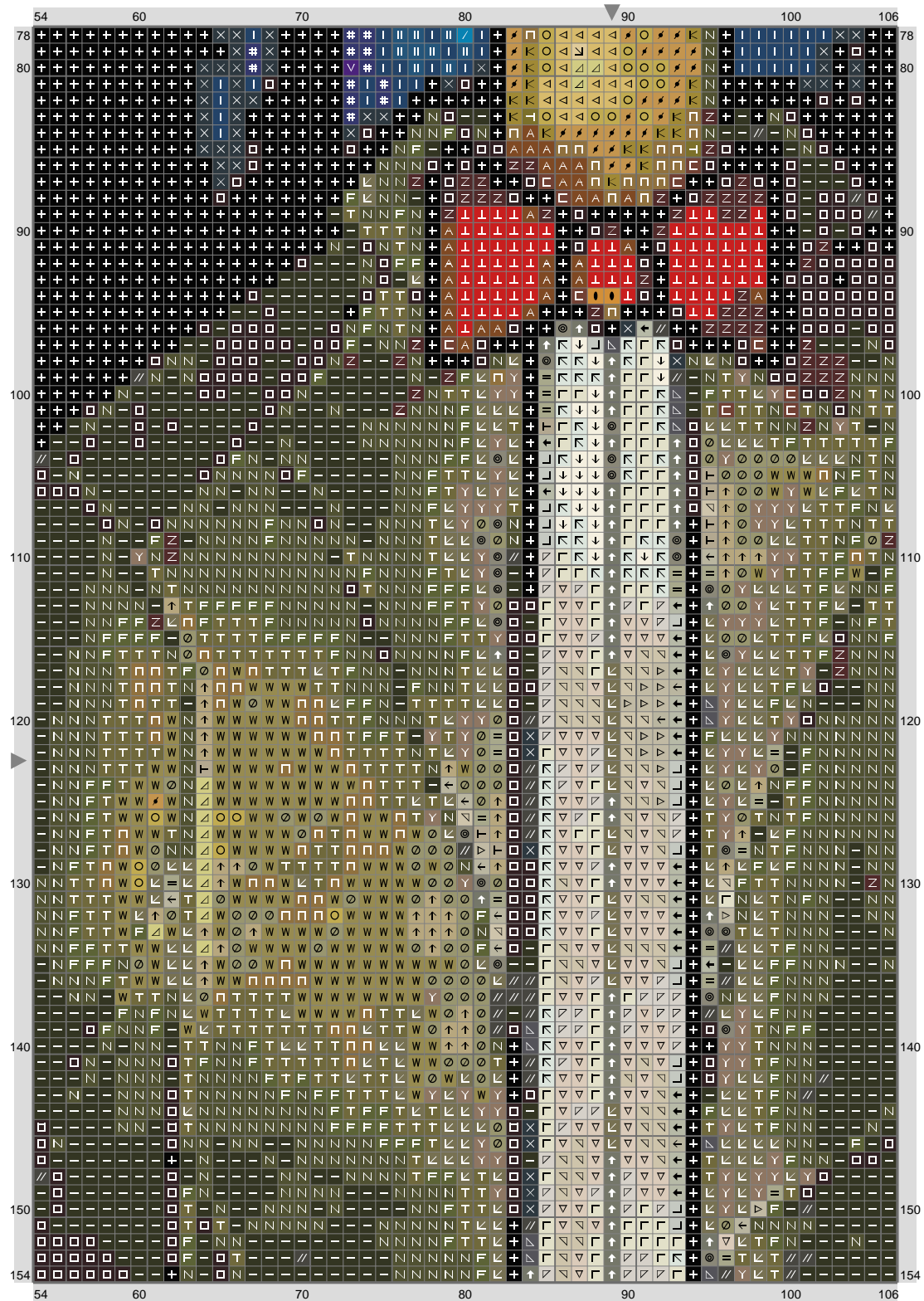
(This chart is printed using KG-Chart LE for Cross Stitch.)

# Untitled

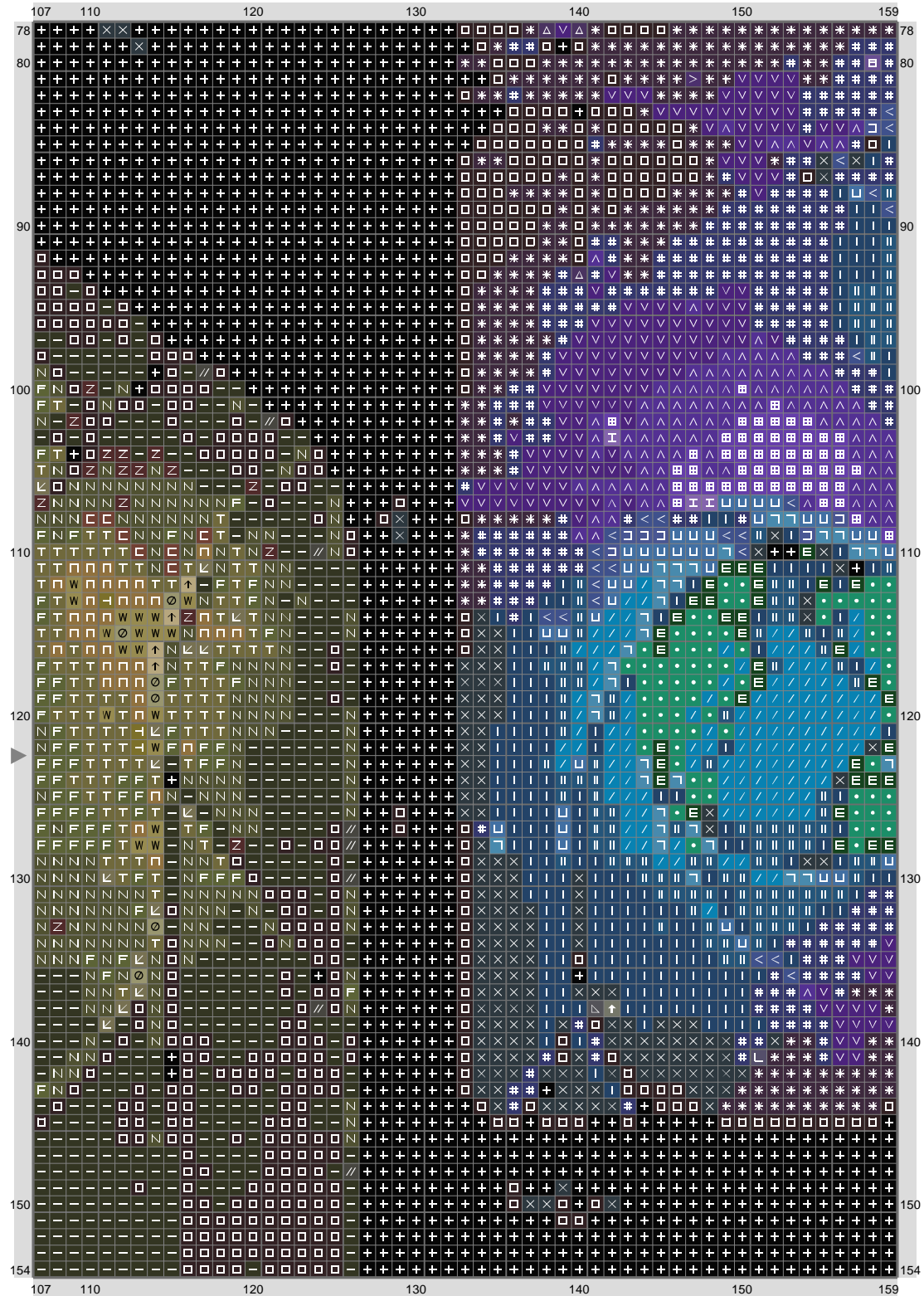


(This chart is printed using KG-Chart LE for Cross Stitch.)

# Untitled

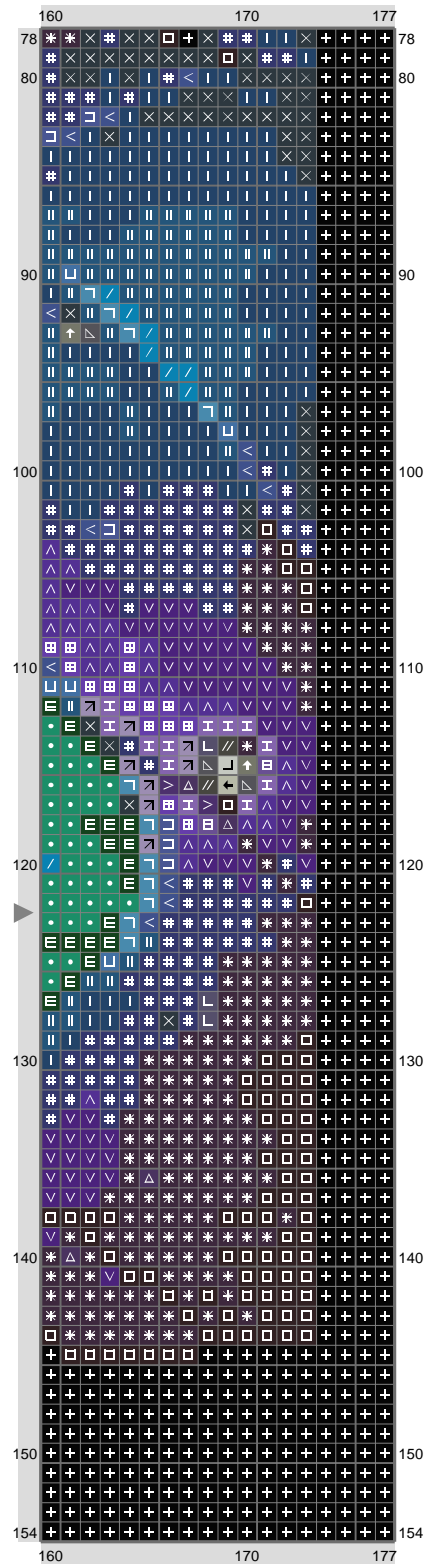


# Untitled



(This chart is printed using KG-Chart LE for Cross Stitch.)

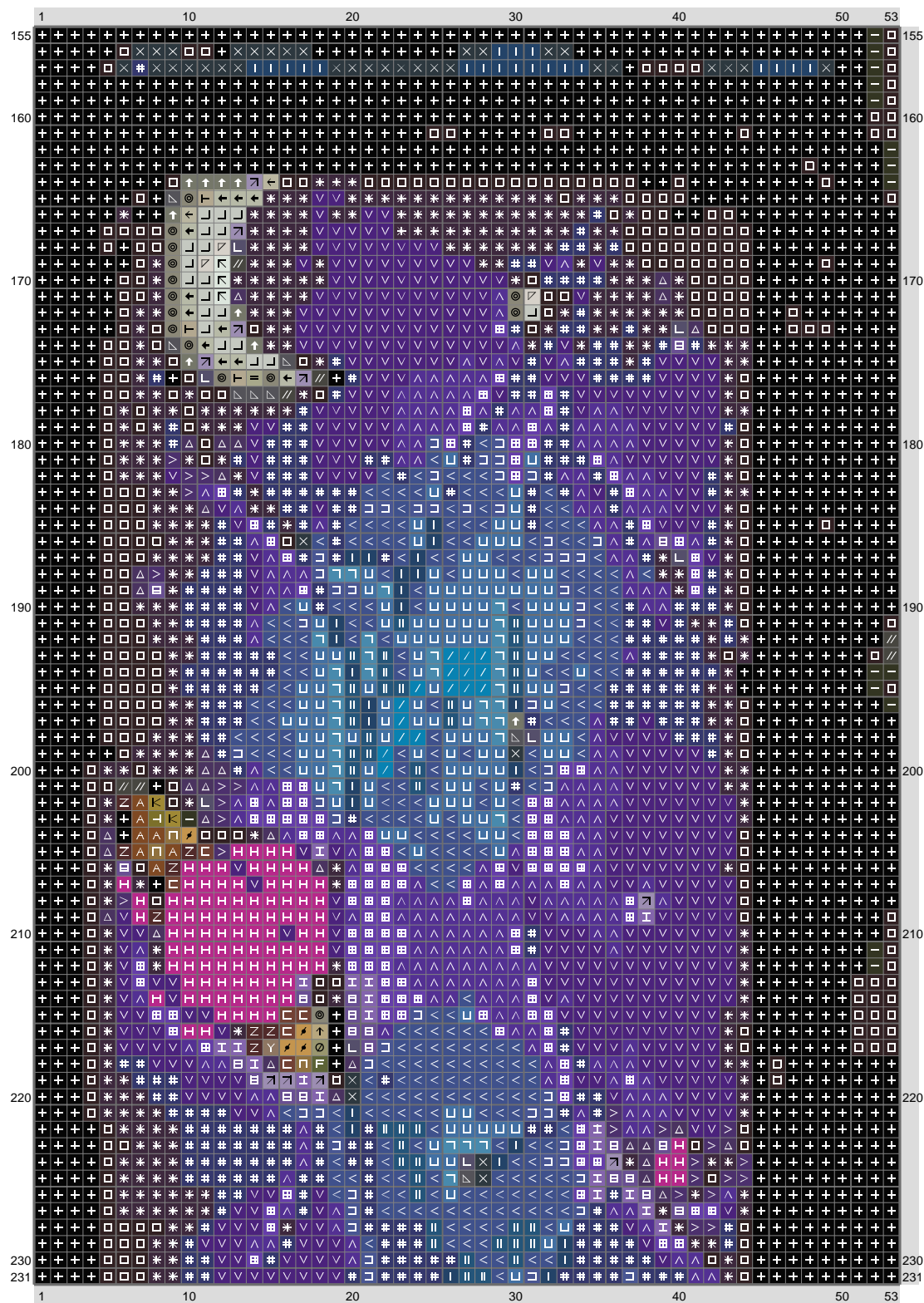
# Untitled



(This chart is printed using KG-Chart LE for Cross Stitch.)

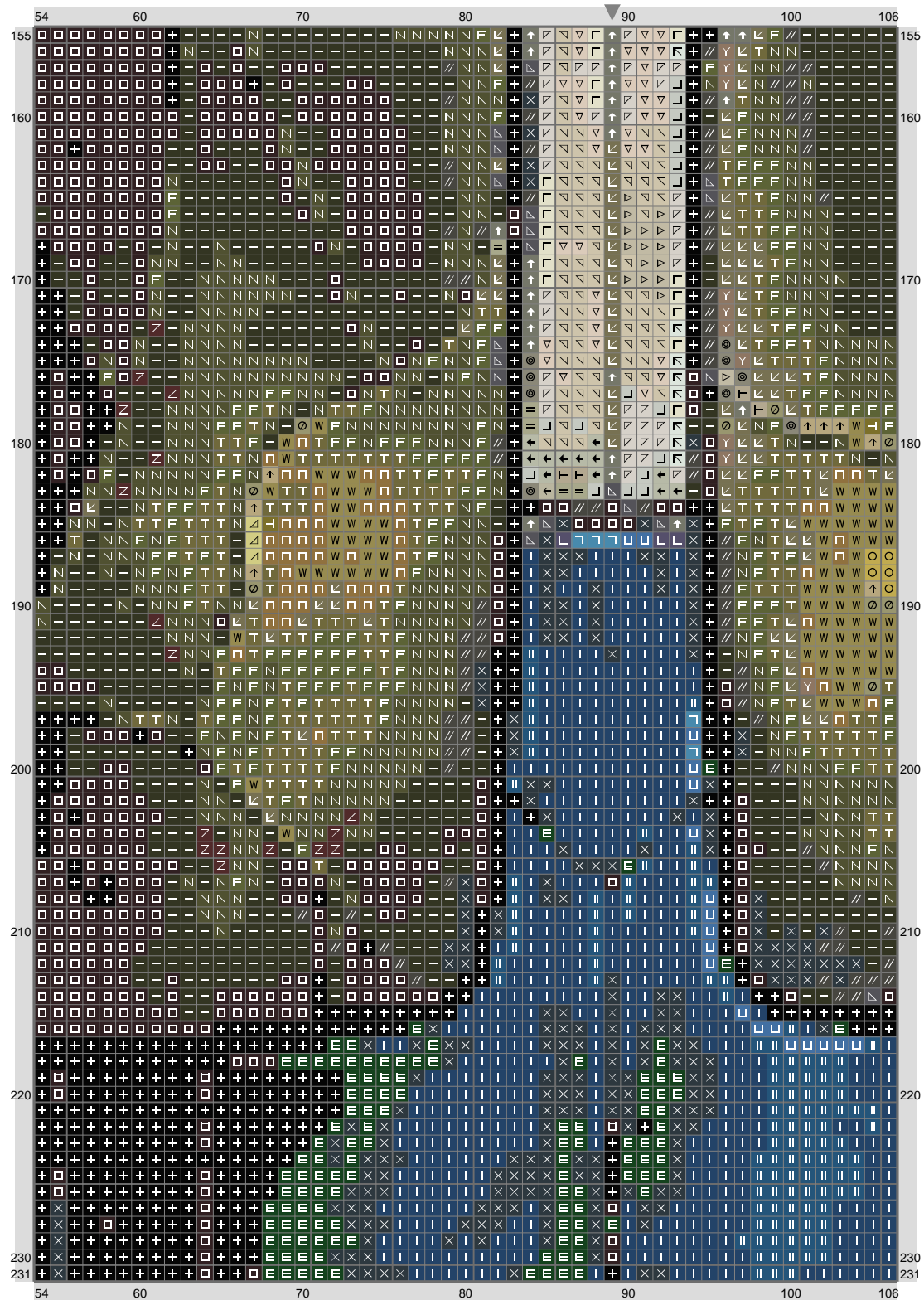


# Untitled



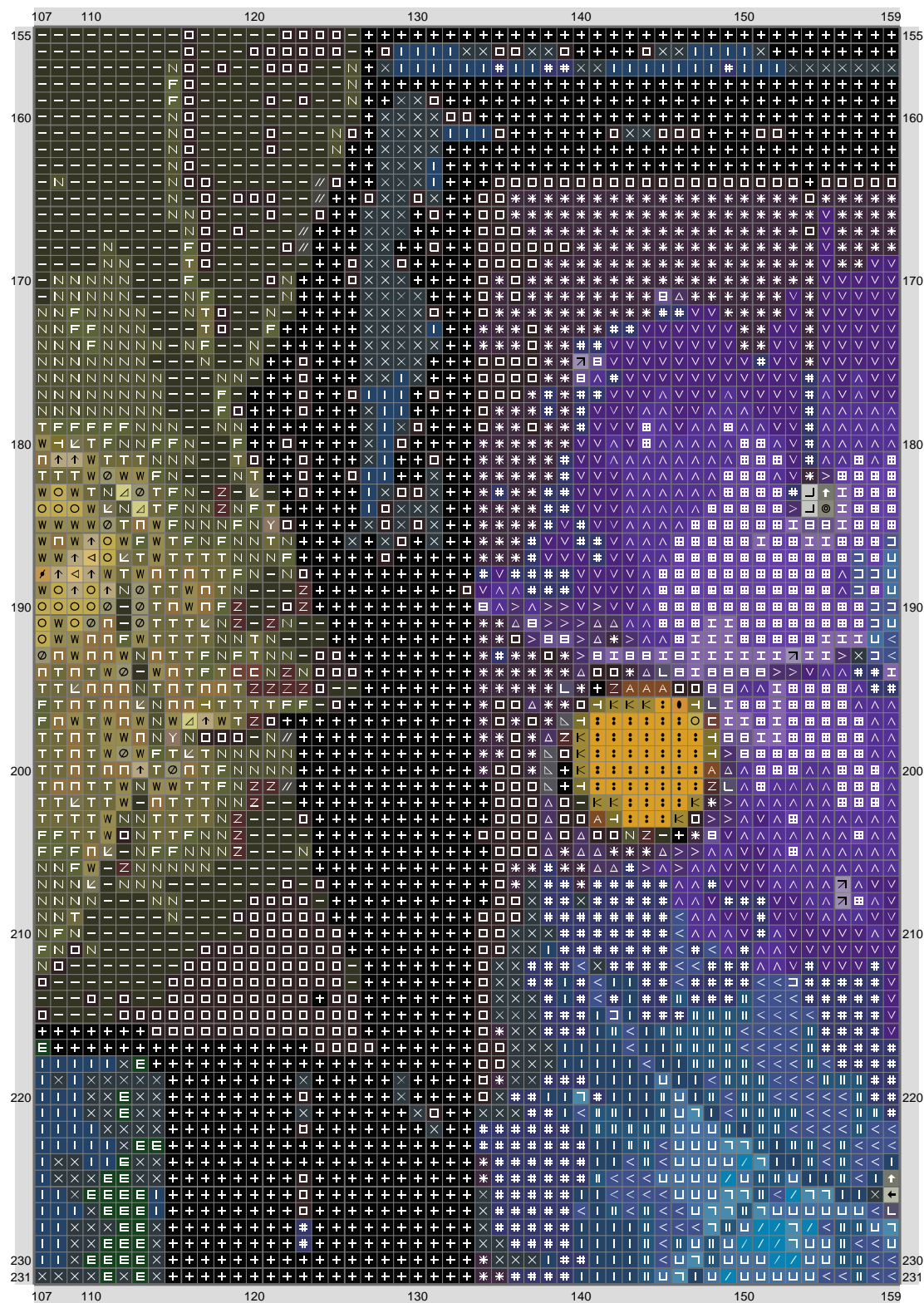
(This chart is printed using KG-Chart LE for Cross Stitch.)

# Untitled



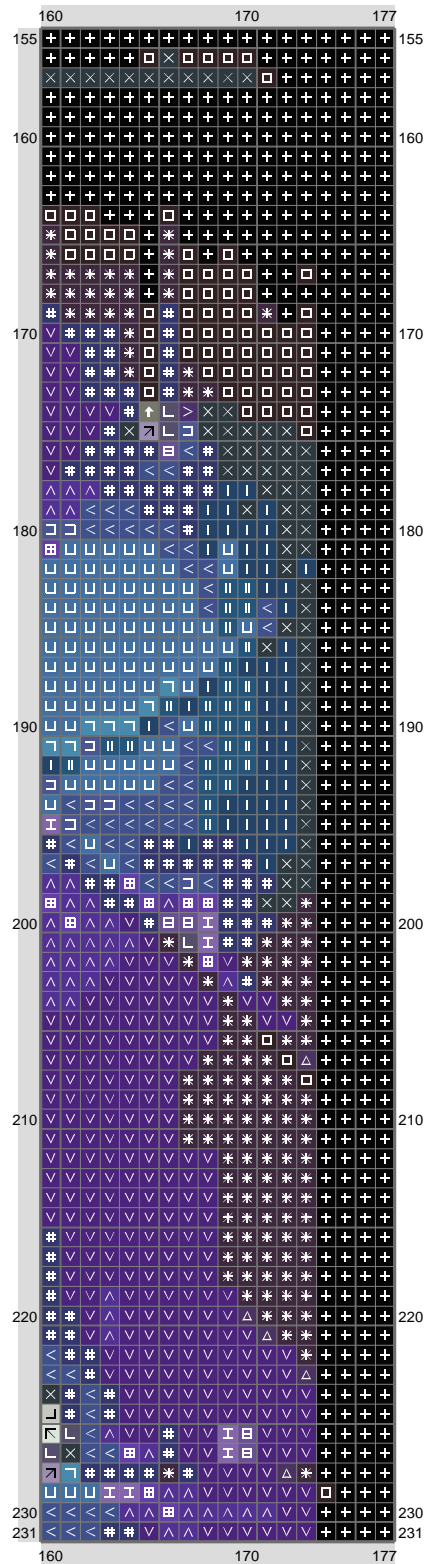
(This chart is printed using KG-Chart LE for Cross Stitch.)

# Untitled



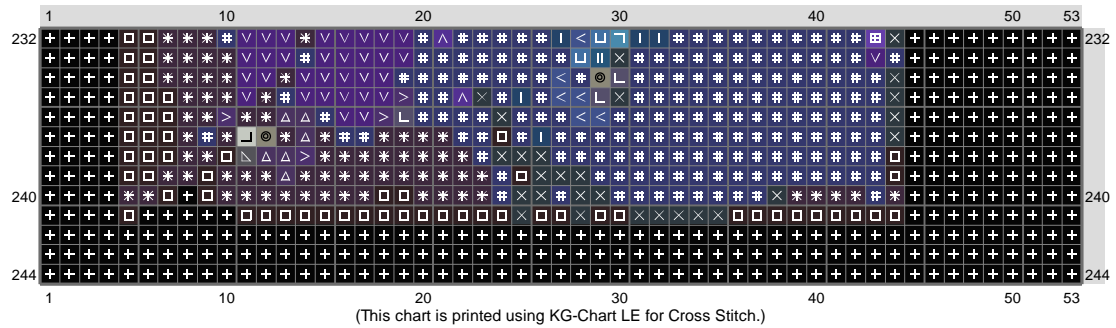
(This chart is printed using KG-Chart LE for Cross Stitch.)

# Untitled

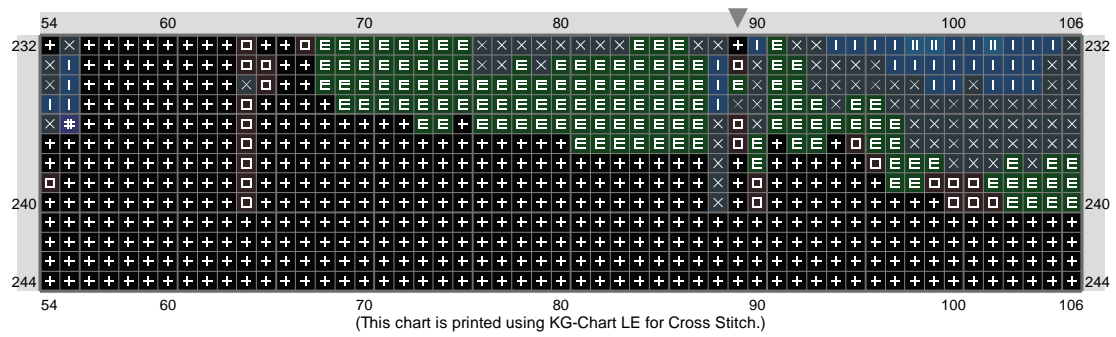


(This chart is printed using KG-Chart LE for Cross Stitch.)

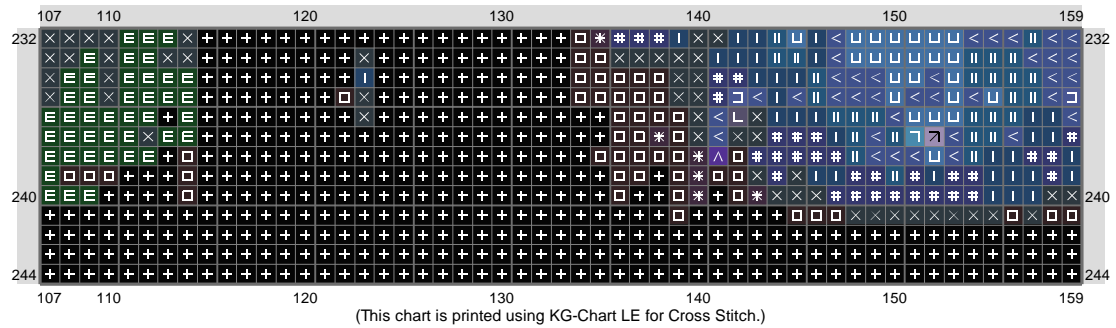
# Untitled



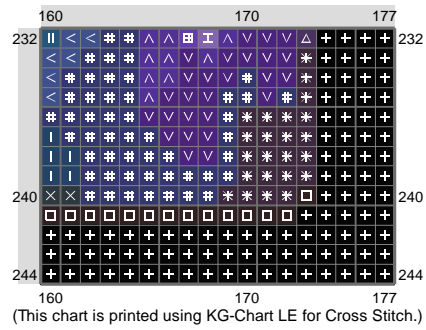
# Untitled



# Untitled



# Untitled





# Untitled

Stitch Count: 177w x 244h  
 Finished Size: 49.95 cm x 68.86 cm (18 ct./inch)  
 Cloth: Aida  
 Cloth's Color: White  
 # of colors: 64 Colors

Color Table (DMC)

## Cross Stitch

	310	(10663 ct)		3746	(116 ct)
	890	(379 ct)		732	(220 ct)
	939	(4025 ct)		3012	(385 ct)
	934	(2223 ct)		3790	(171 ct)
	500	(1987 ct)		783	(30 ct)
	823	(1869 ct)		3852	(145 ct)
	3750	(1824 ct)		3828	(164 ct)
	311	(1797 ct)		733	(199 ct)
	3850	(125 ct)		640	(241 ct)
	820	(1595 ct)		3052	(328 ct)
	796	(834 ct)		3053	(282 ct)
	3842	(651 ct)		372	(247 ct)
	824	(608 ct)		3032	(353 ct)
	517	(439 ct)		833	(185 ct)
	3844	(187 ct)		3819	(180 ct)
	3371	(370 ct)		3760	(129 ct)
	936	(1476 ct)		414	(42 ct)
	3021	(388 ct)		642	(290 ct)
	829	(429 ct)		523	(135 ct)
	898	(54 ct)		3782	(428 ct)
	937	(476 ct)		524	(713 ct)
	3011	(706 ct)		3023	(138 ct)
	817	(85 ct)		3046	(95 ct)
	730	(83 ct)		3047	(153 ct)
	830	(338 ct)		613	(490 ct)
	336	(234 ct)		3033	(361 ct)
	791	(85 ct)		644	(580 ct)
	3799	(275 ct)		3072	(176 ct)
	413	(245 ct)		746	(317 ct)
	3051	(427 ct)			
	3787	(239 ct)			
	312	(112 ct)			
	797	(443 ct)			
	792	(127 ct)			
	718	(97 ct)			