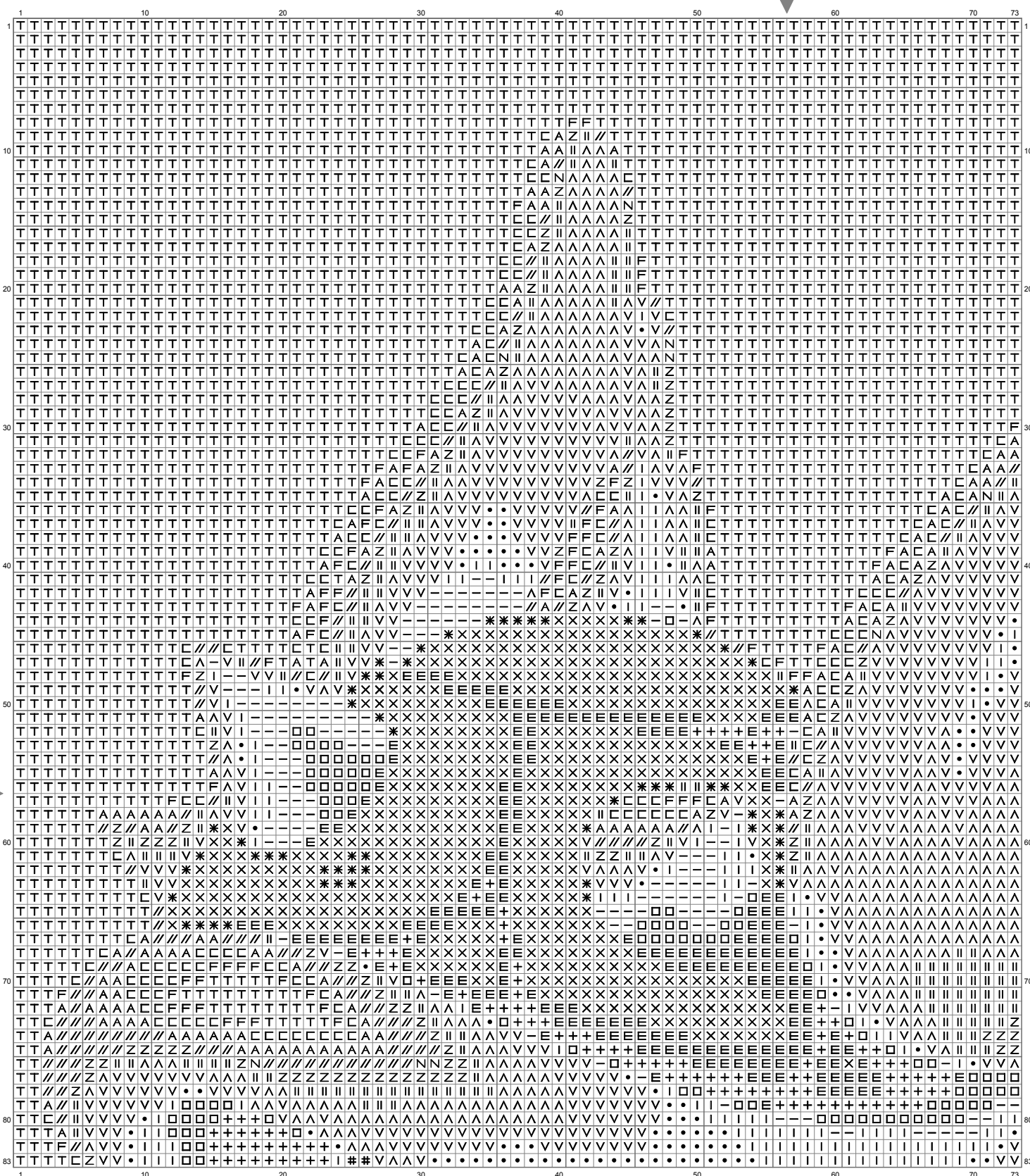
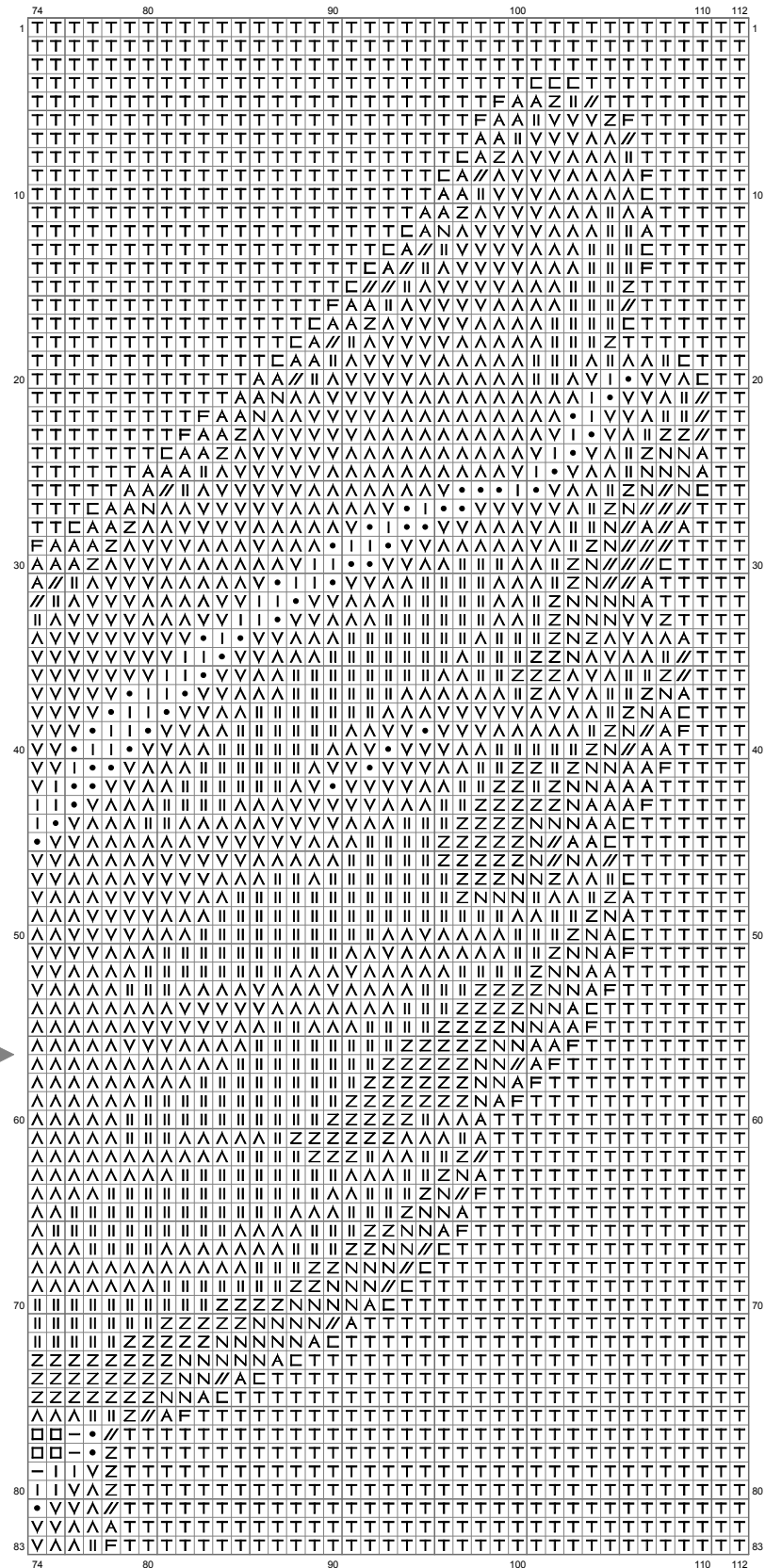


Untitled



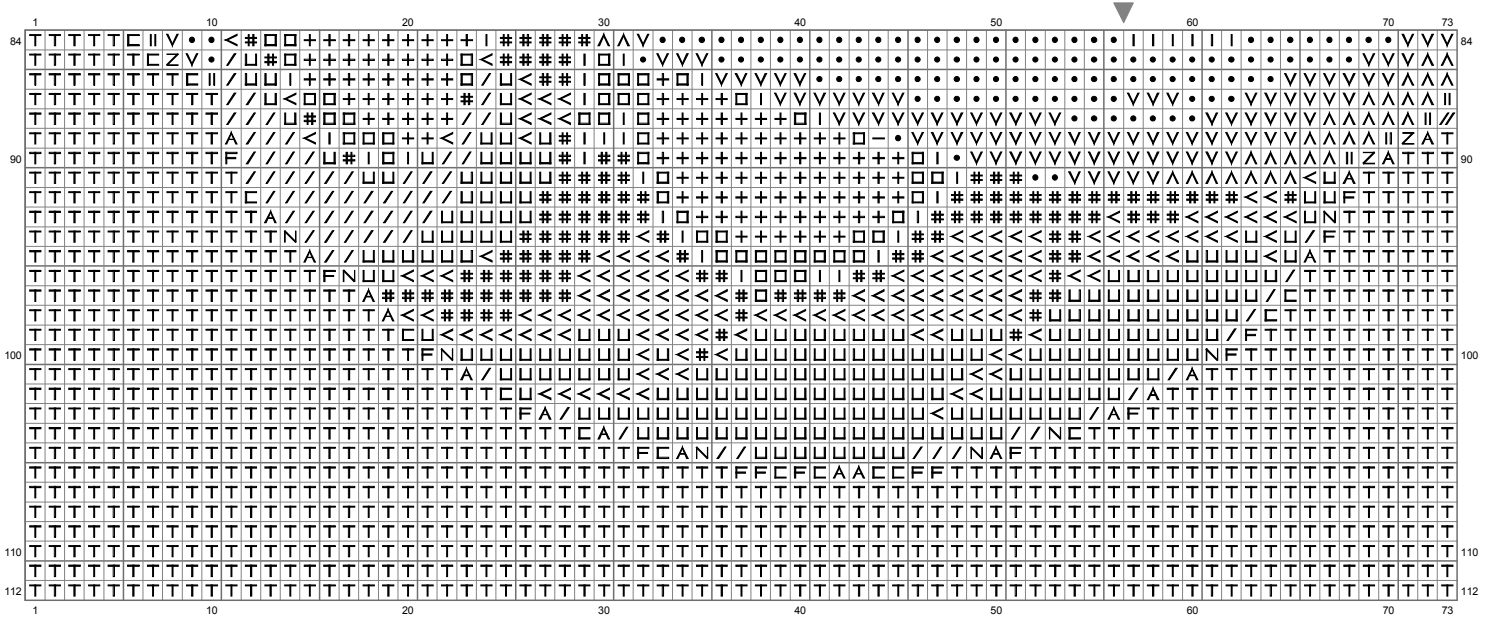
(This chart is printed using KG-Chart LE for Cross Stitch.)

Untitled

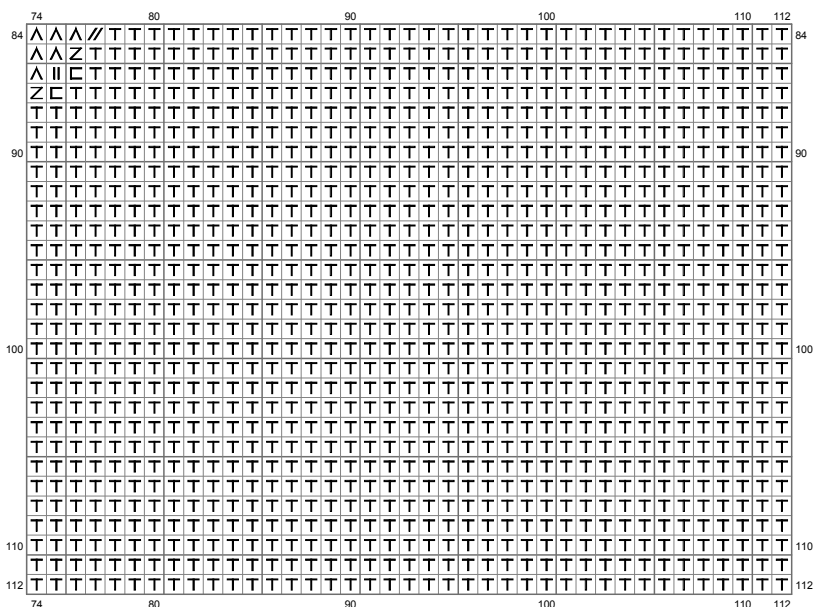


(This chart is printed using KG-Chart LE for Cross Stitch.)

Untitled



Untitled



(This chart is printed using KG-Chart LE for Cross Stitch.)

Stitch Count:112w x 112h // Cloth:Aida Cloth's Color:White

Finished Size:40.64 cm x 40.64 cm (14 ct./inch) // Total 22 Colors

Color Table (DMC)

Cross Stitch

	310	(232 ct)
	311	(232 ct)
	3362	(160 ct)
	317	(155 ct)
	3843	(575 ct)
	825	(59 ct)
	640	(228 ct)
	371	(127 ct)
	522	(287 ct)
	3022	(900 ct)
	523	(1026 ct)
	3023	(629 ct)
	422	(152 ct)
	834	(246 ct)
	744	(74 ct)
	3033	(273 ct)
	644	(118 ct)
	3072	(192 ct)
	ECRU	(266 ct)
	3865	(227 ct)
	BLANC	(109 ct)
	B5200	(6277 ct)