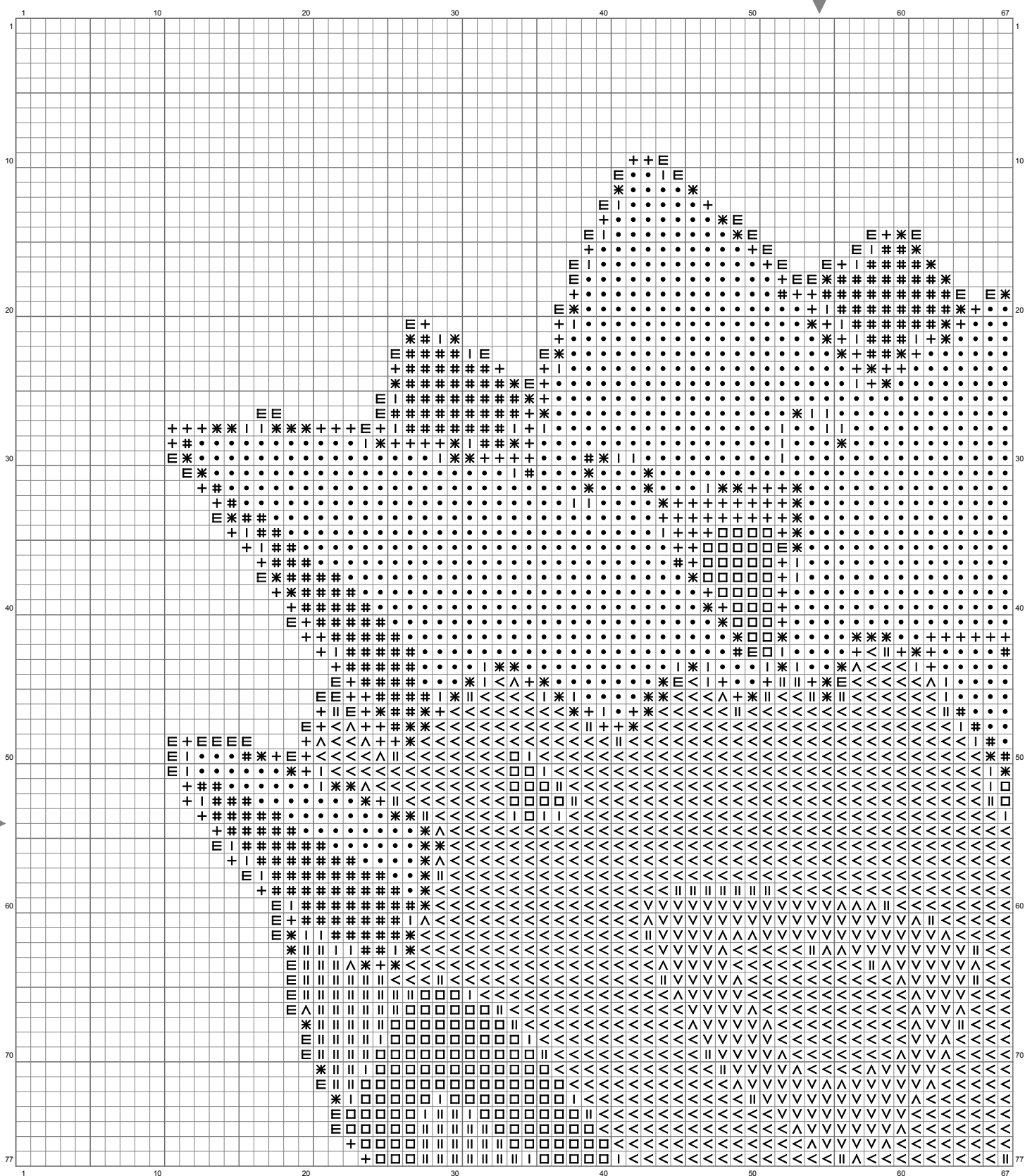
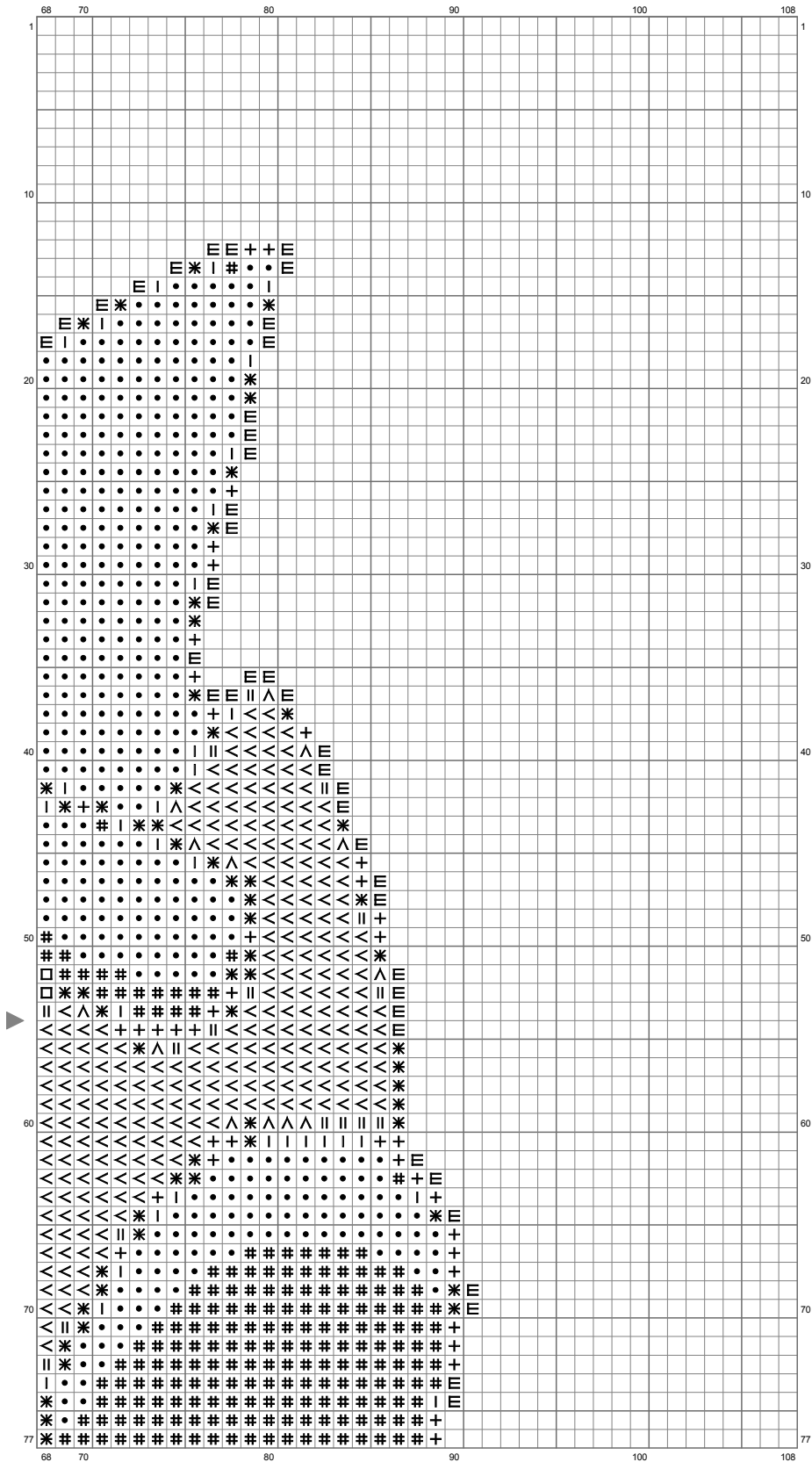


Togepi



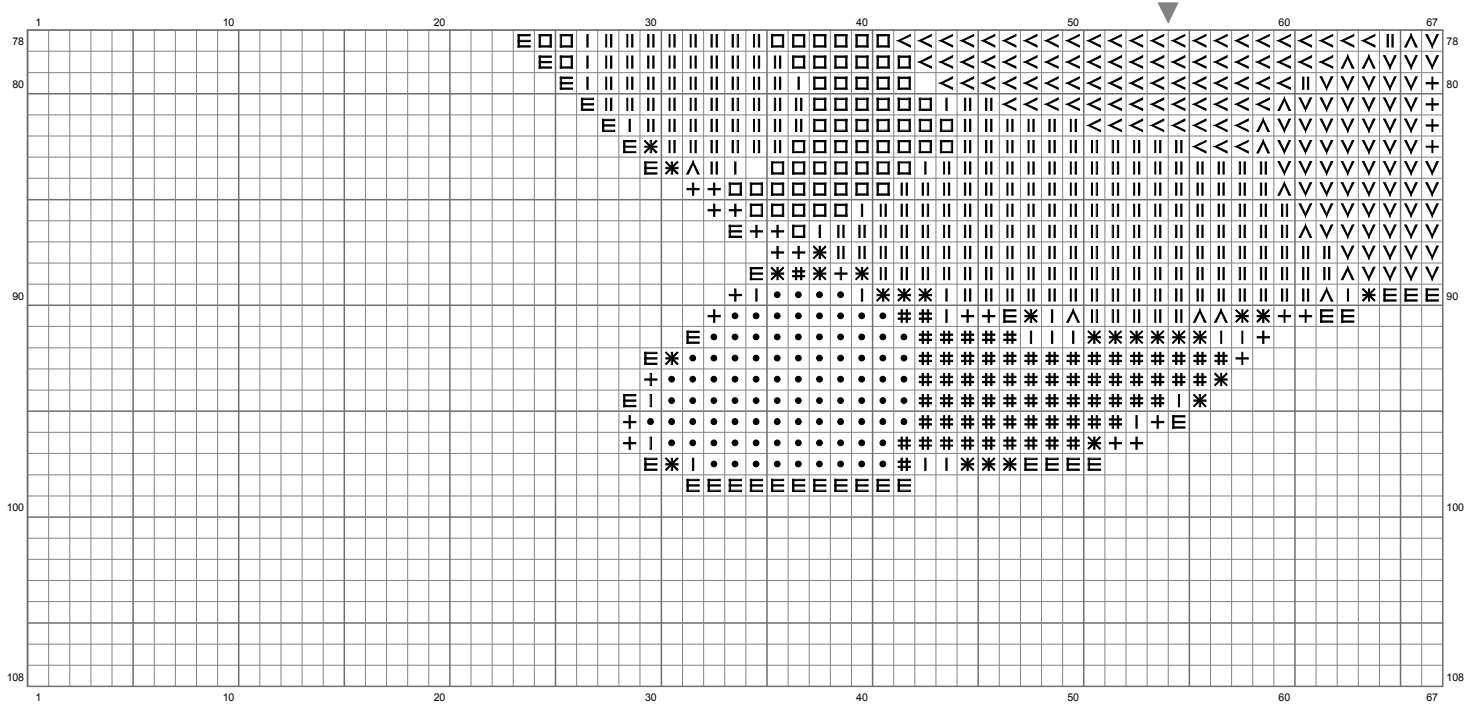
(This chart is printed using KG-Chart LE for Cross Stitch.)

Togepi



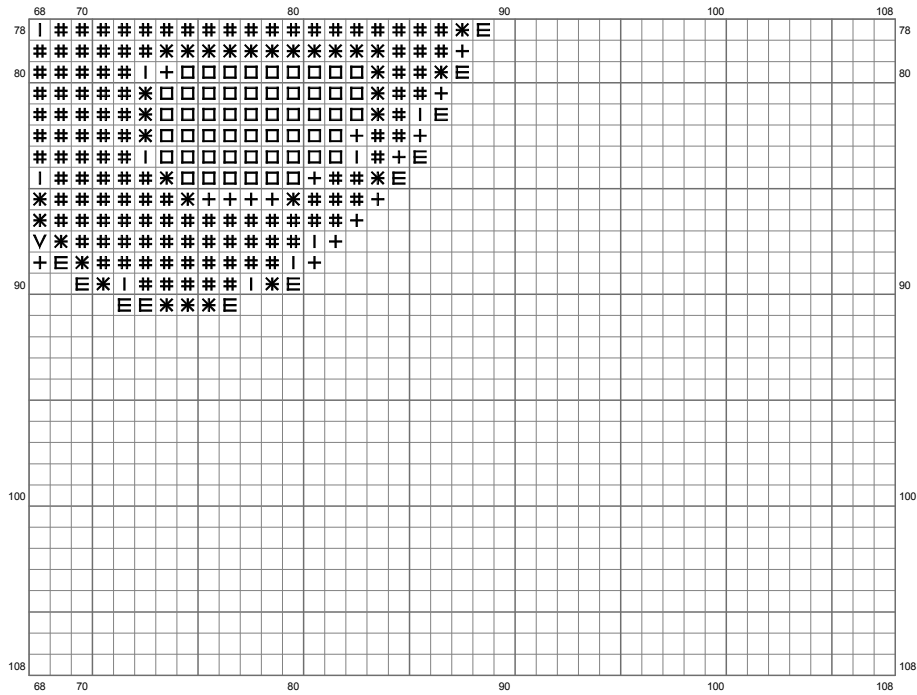
(This chart is printed using KG-Chart LE for Cross Stitch.)

Togepi



(This chart is printed using KG-Chart LE for Cross Stitch.)

Togepi



(This chart is printed using KG-Chart LE for Cross Stitch.)

Togepi

Stitch Count:108w x 108h












Cloth:Aida Cloth's Color:White

Finished Size:30.48 cm x 30.48 cm (18 ct./inch)

Total 11 Colors

Color Table (DMC)

Cross Stitch

	B5200	(1223 ct)
	310	(227 ct)
	349	(281 ct)
	445	(1489 ct)
	519	(82 ct)
	729	(164 ct)
	939	(154 ct)
	973	(599 ct)
	3072	(339 ct)
	3790	(233 ct)
	3844	(221 ct)