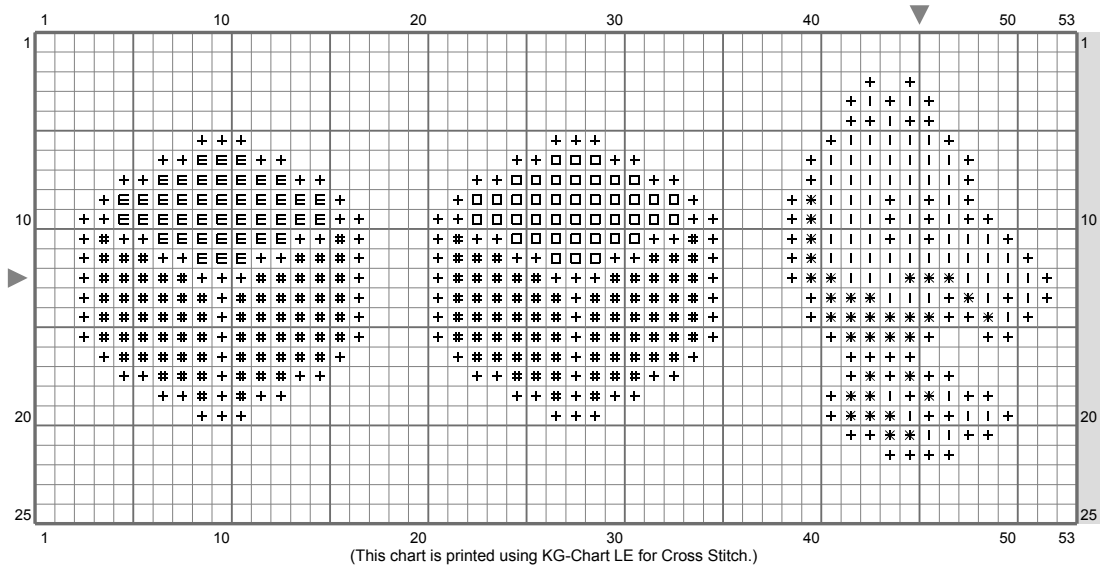
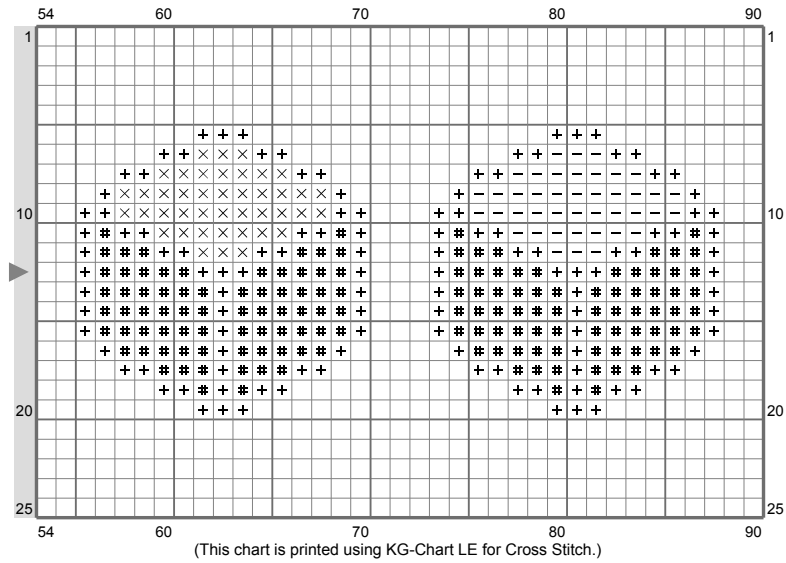


# Q-Bert



# Q-Bert











## Q-Bert

Stitch Count: 90w x 25h  
Finished Size: 16.32 cm x 4.53 cm (14 ct./inch)  
Cloth: Aida  
Cloth's Color: White  
# of colors: 8 Colors

### Color Table (DMC)

#### **Cross Stitch**

	310	(304 ct)
	910	(42 ct)
	701	(42 ct)
	349	(42 ct)
	601	(42 ct)
	782	(34 ct)
	3852	(69 ct)
	646	(288 ct)