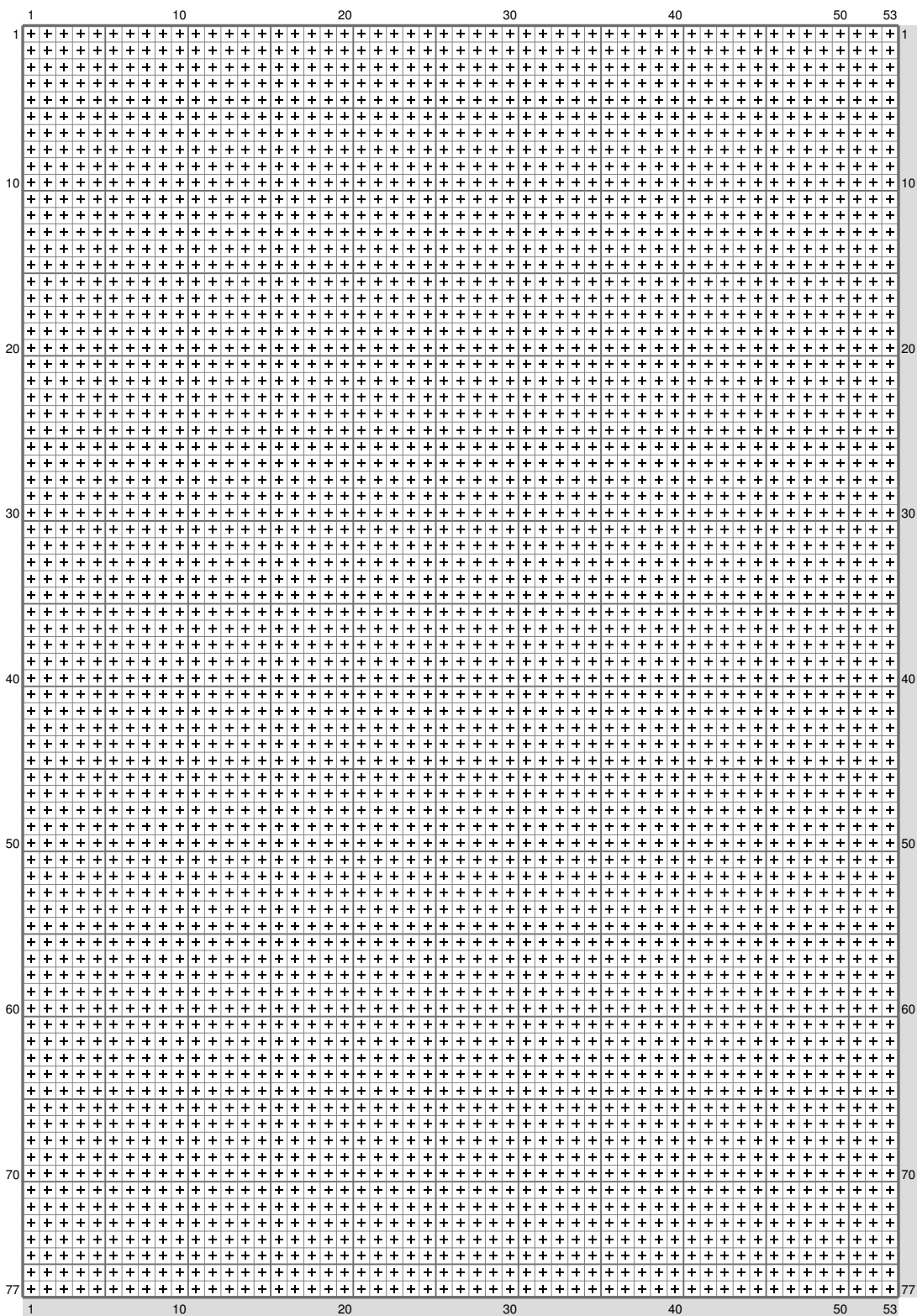
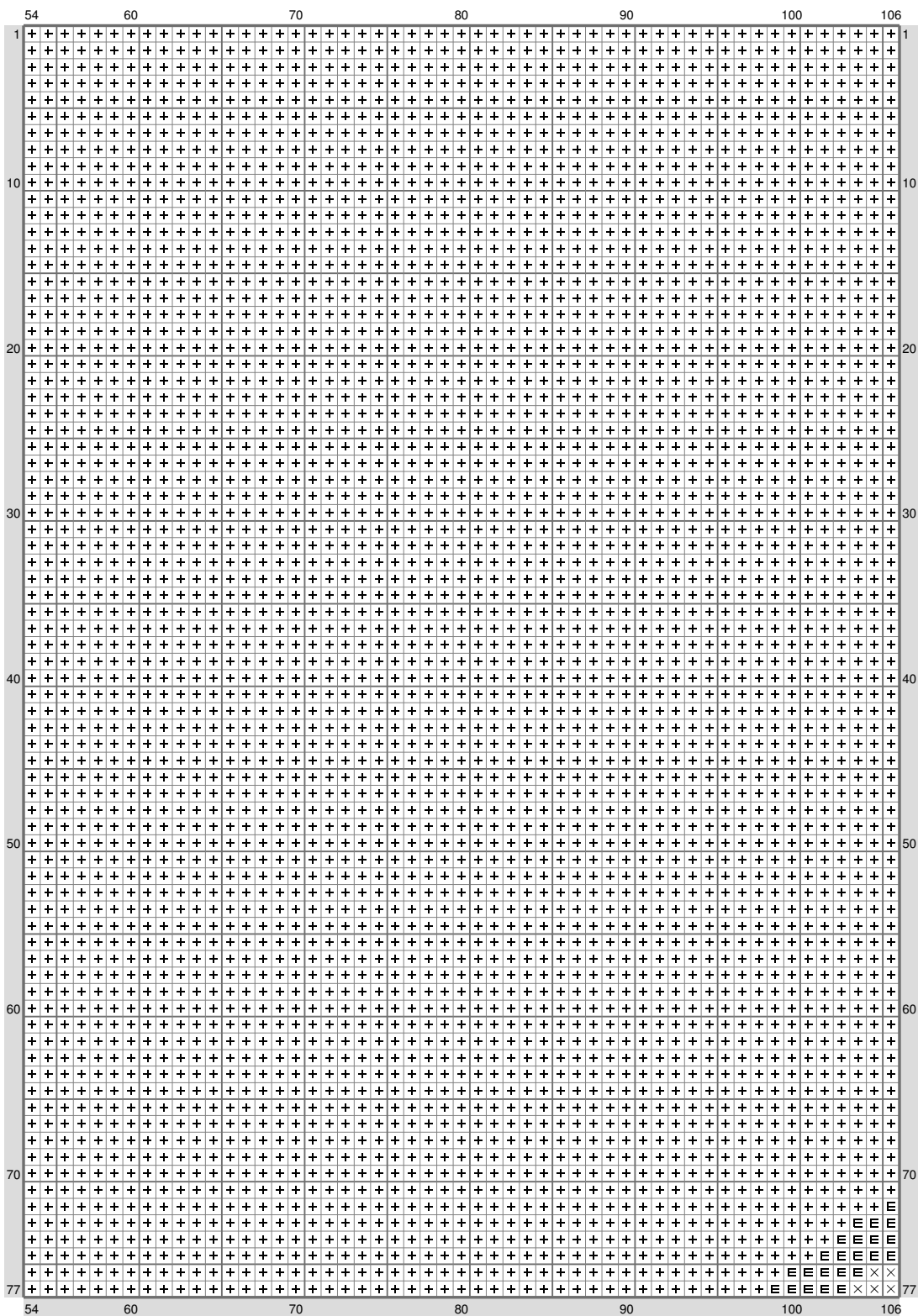


Untitled



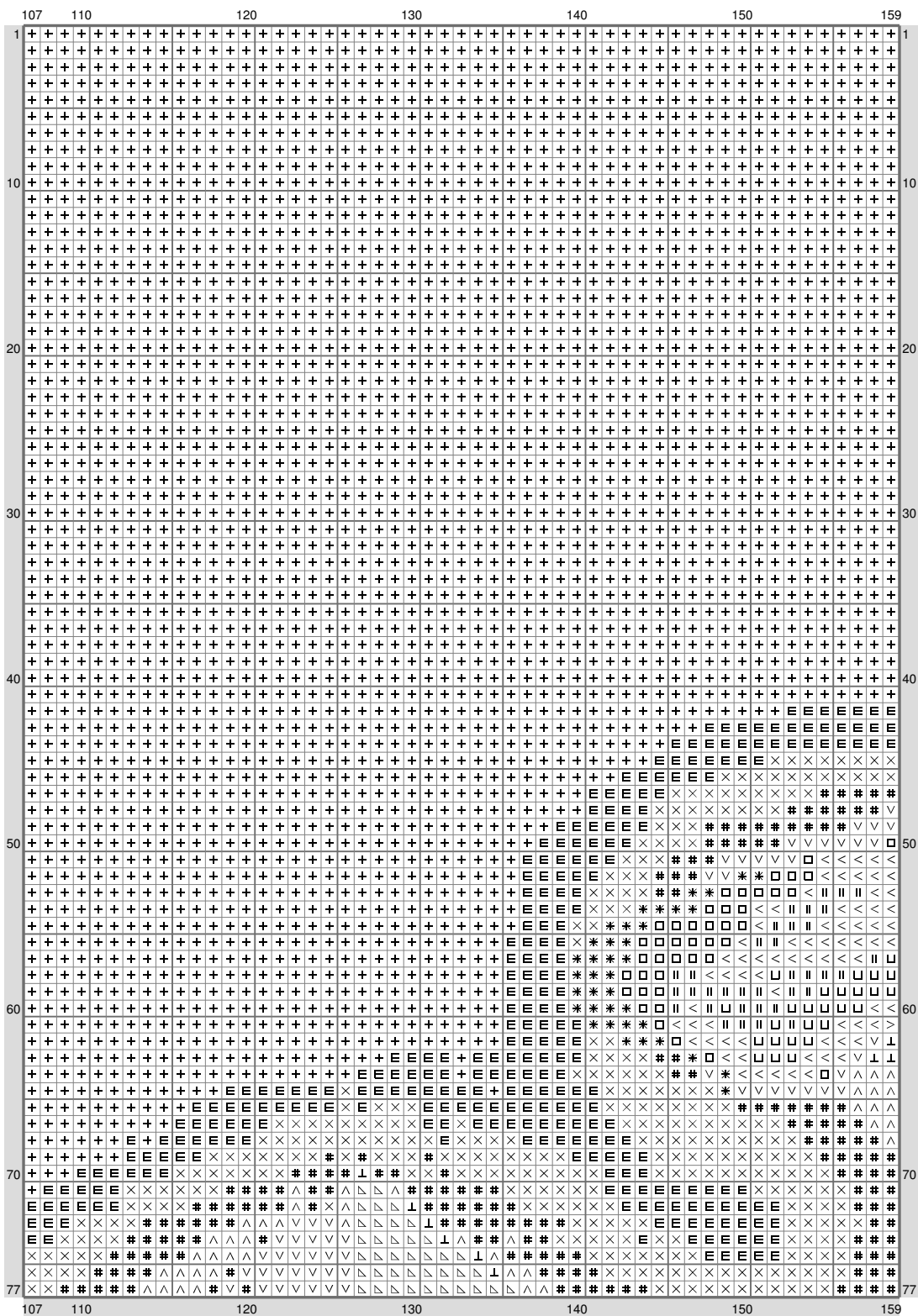
(This chart is printed using KG-Chart LE for Cross Stitch.)

Untitled

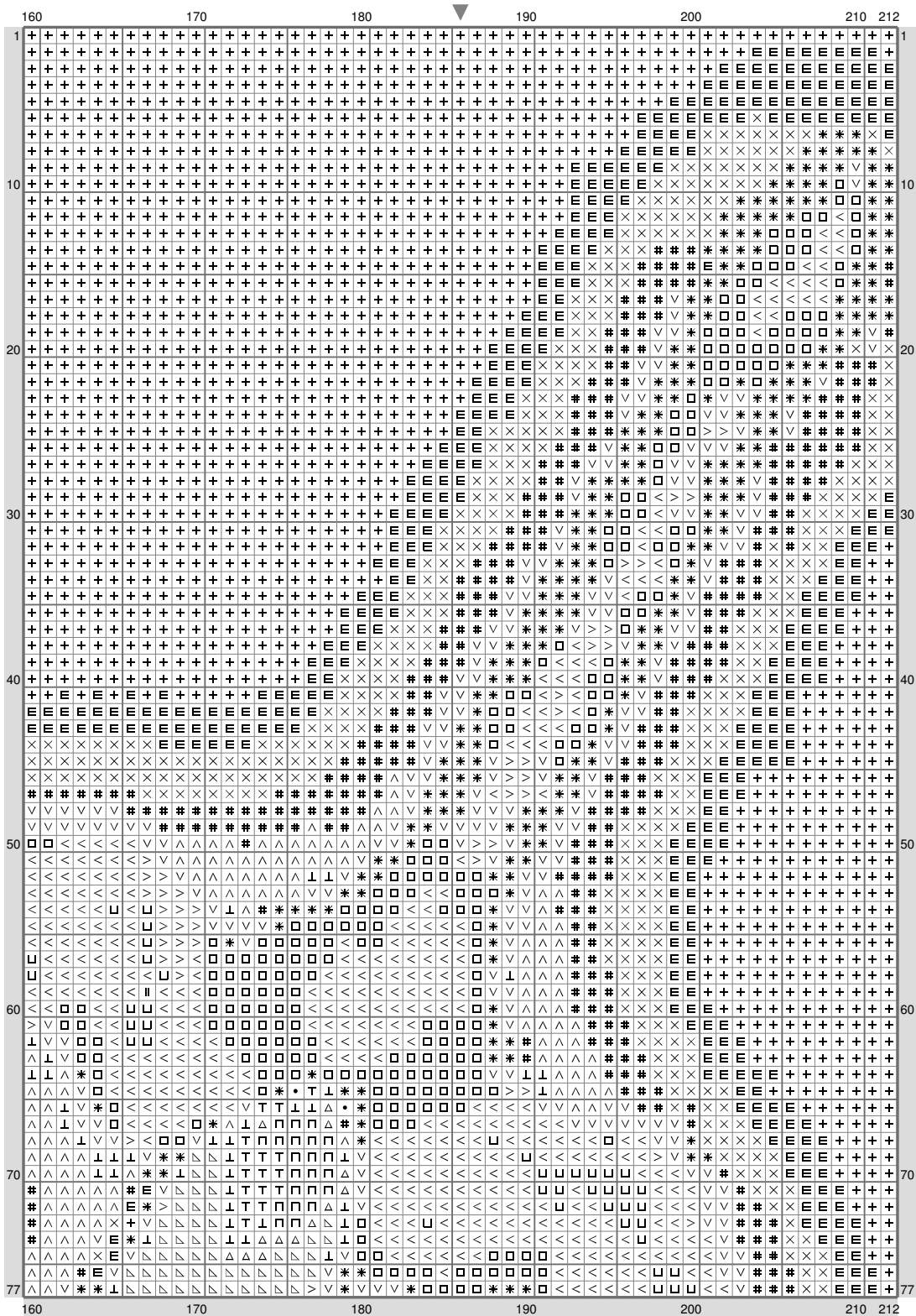


(This chart is printed using KG-Chart LE for Cross Stitch.)

Untitled

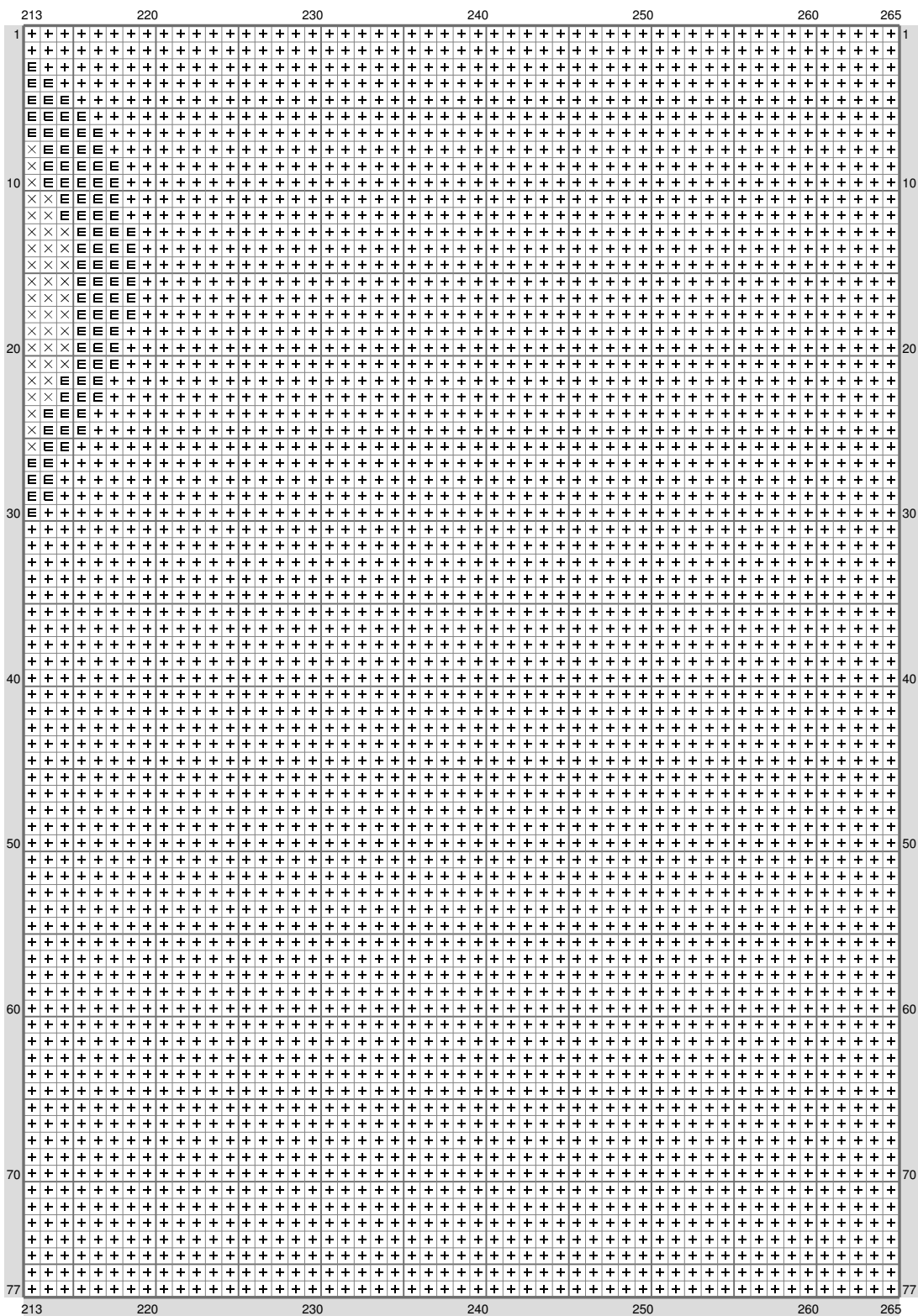


Untitled



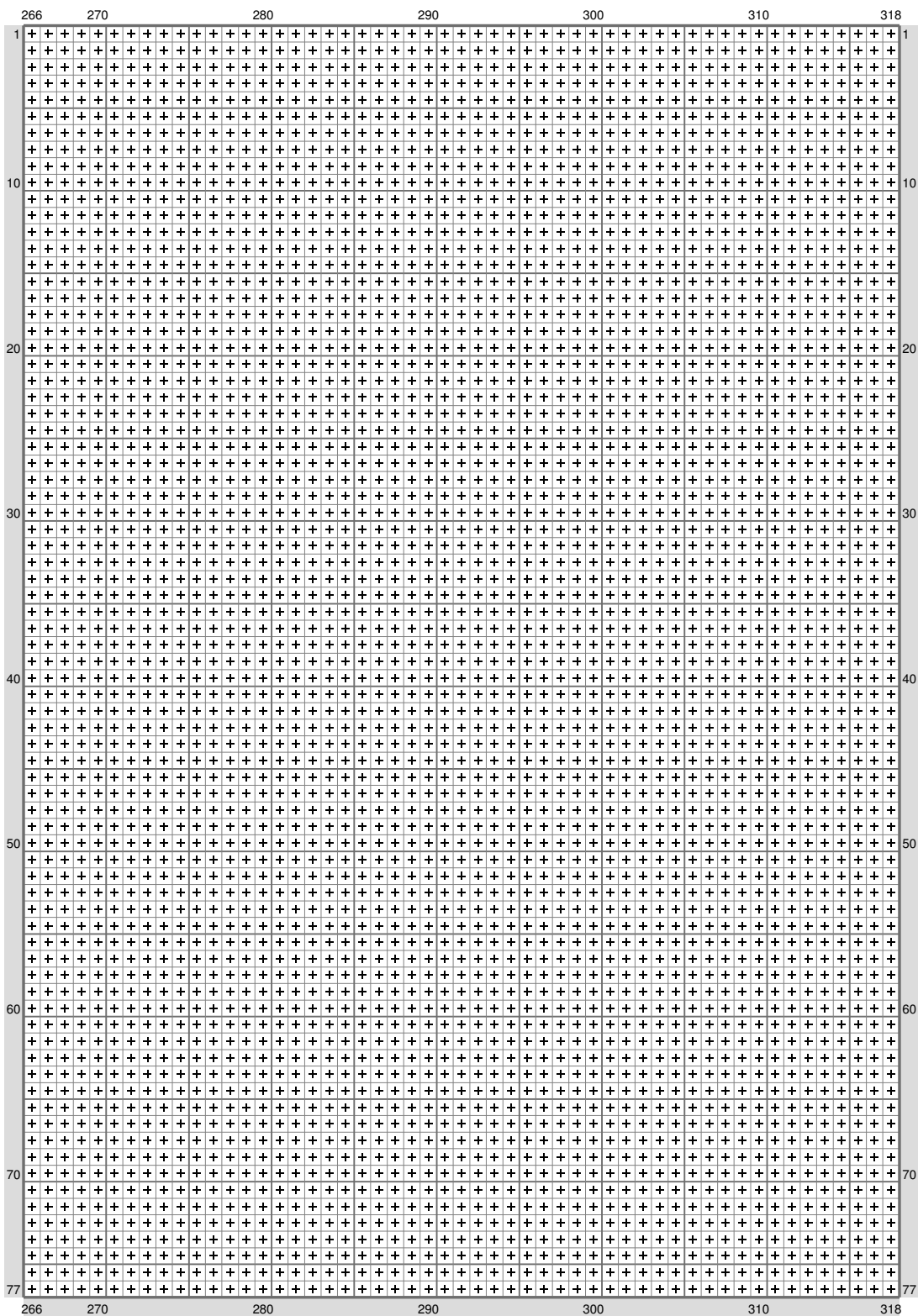
(This chart is printed using KG-Chart LE for Cross Stitch.)

Untitled



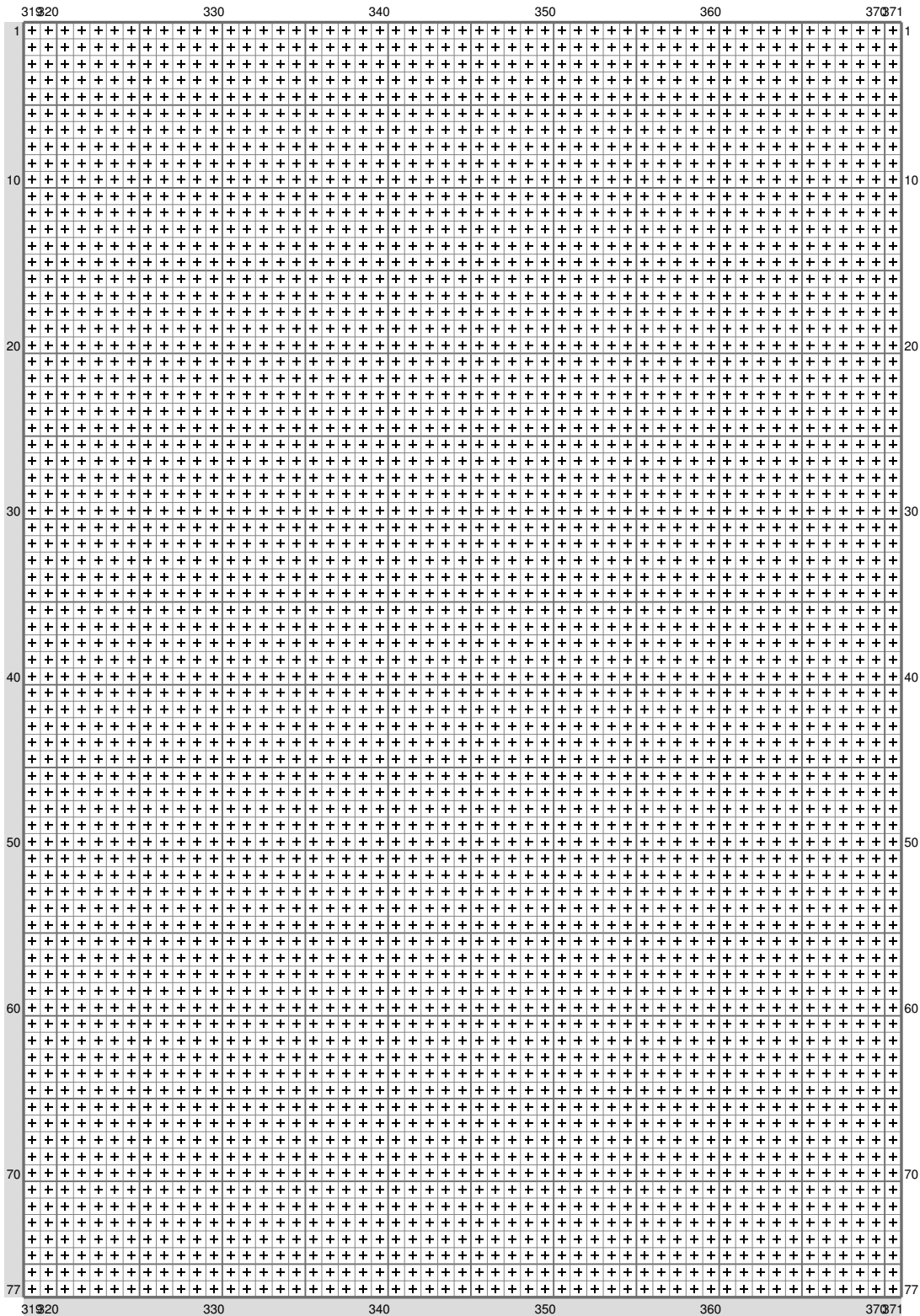
(This chart is printed using KG-Chart LE for Cross Stitch.)

Untitled

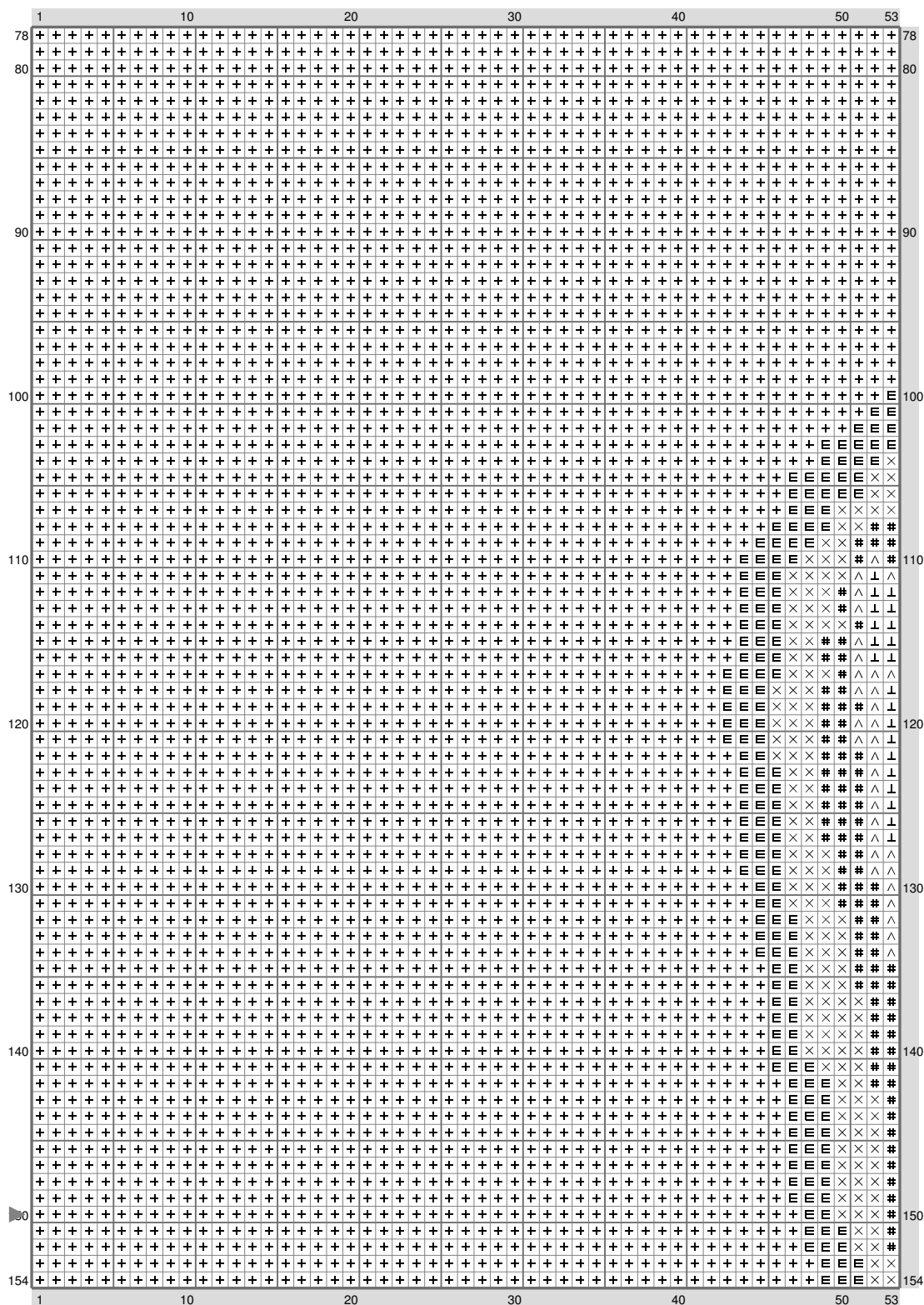


(This chart is printed using KG-Chart LE for Cross Stitch.)

Untitled

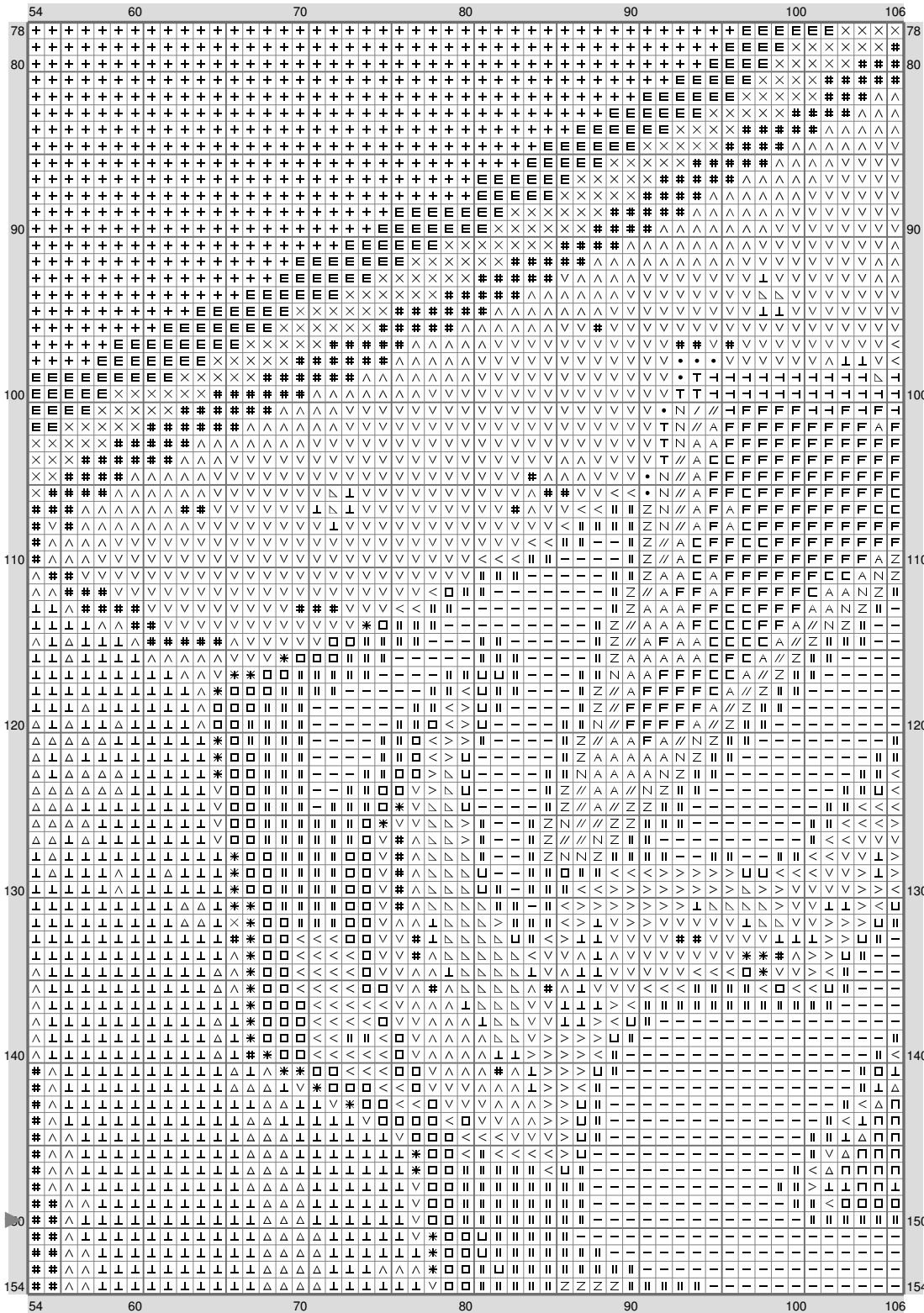


Untitled



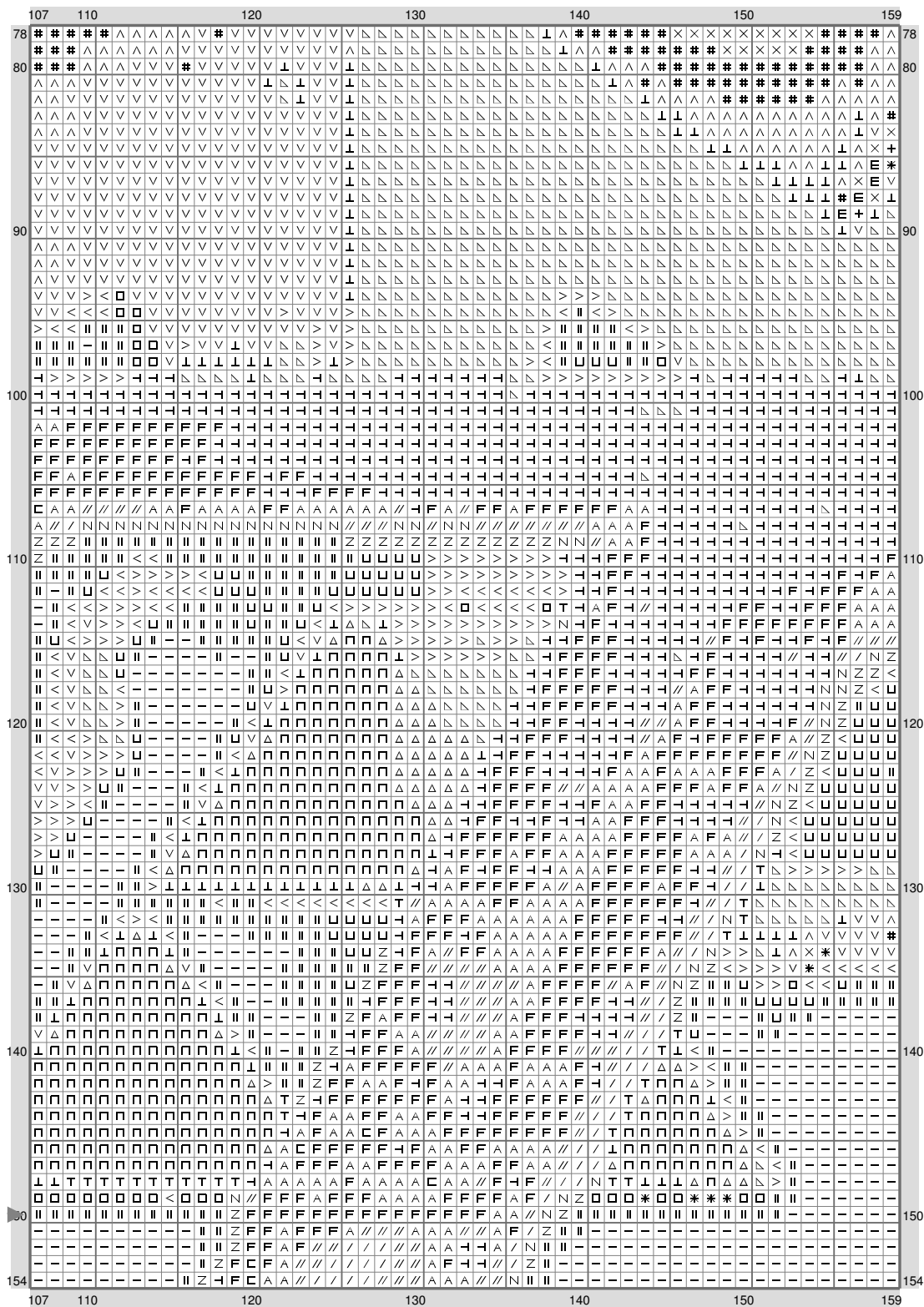
(This chart is printed using KG-Chart LE for Cross Stitch.)

Untitled



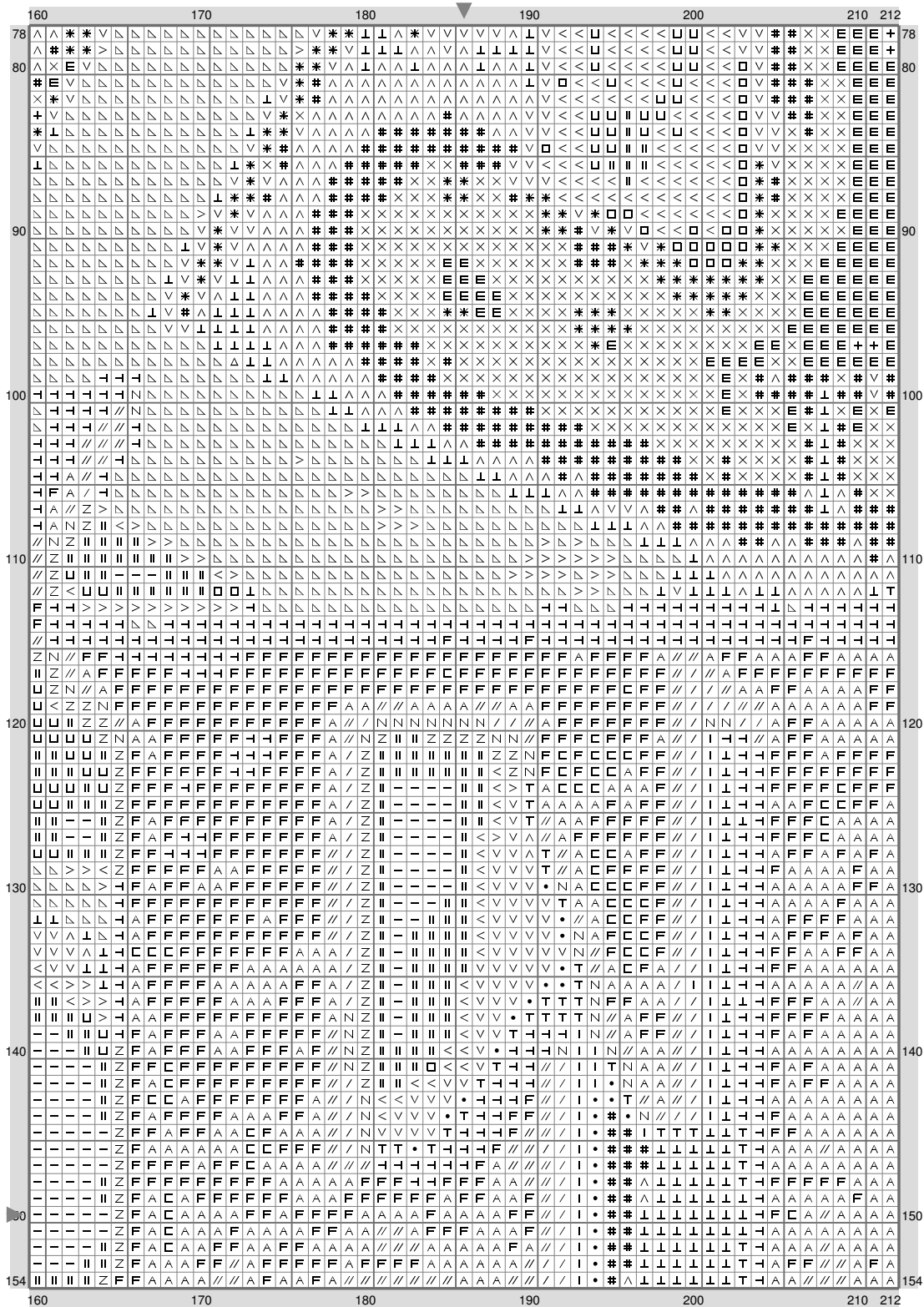
(This chart is printed using KG-Chart LE for Cross Stitch.

Untitled



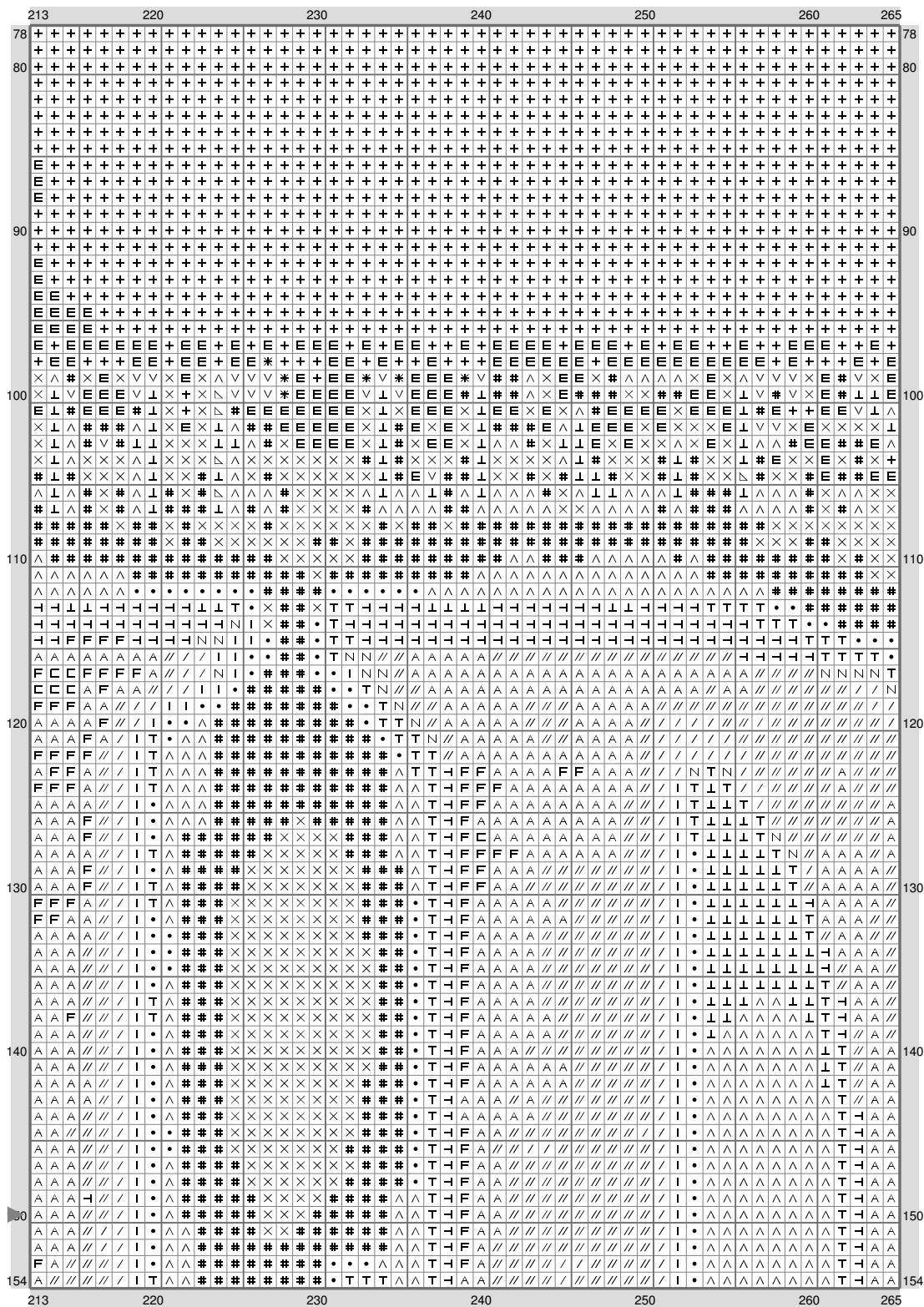
(This chart is printed using KG-Chart LE for Cross Stitch.)

Untitled



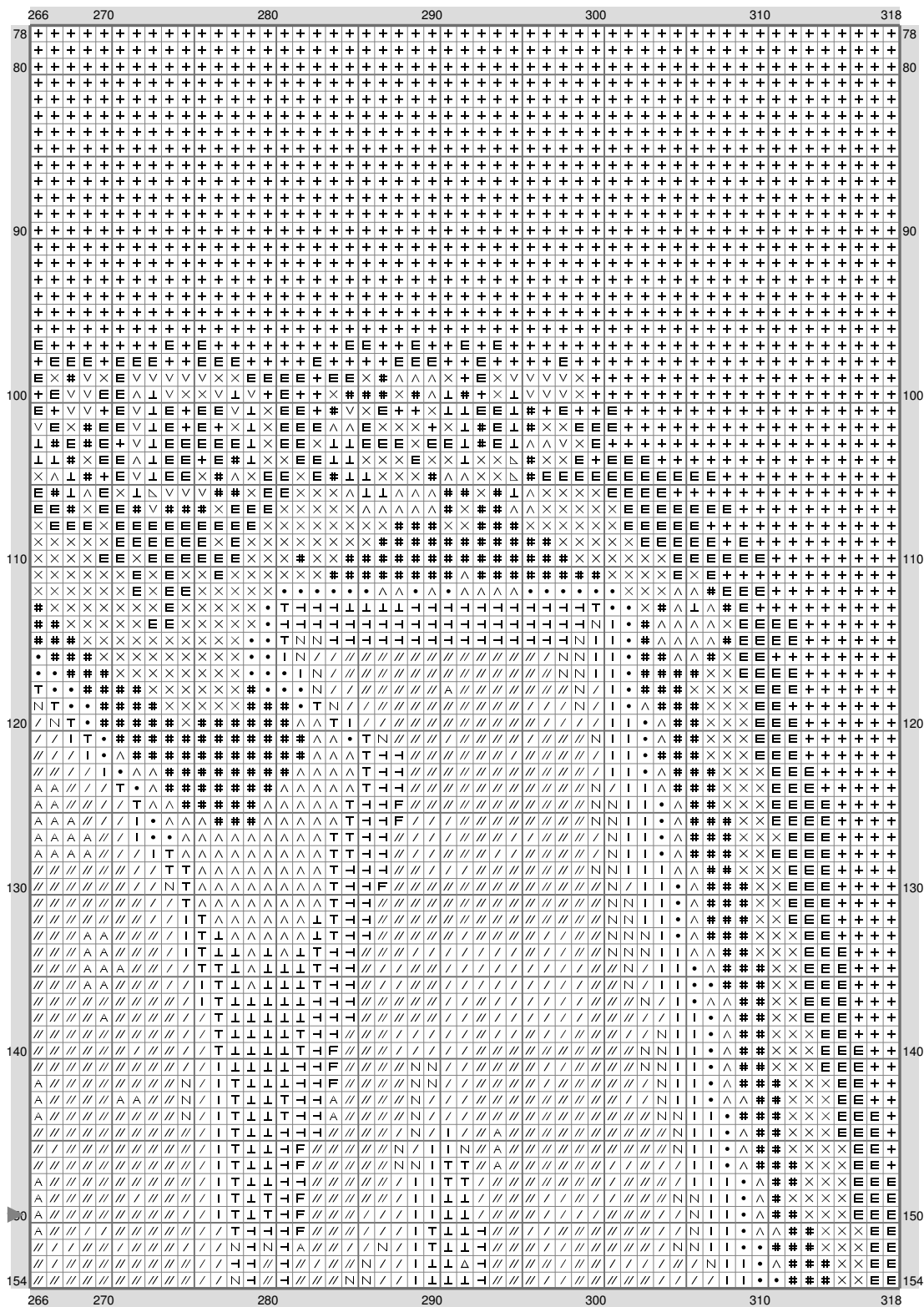
(This chart is printed using KG-Chart LE for Cross Stitch.)

Untitled



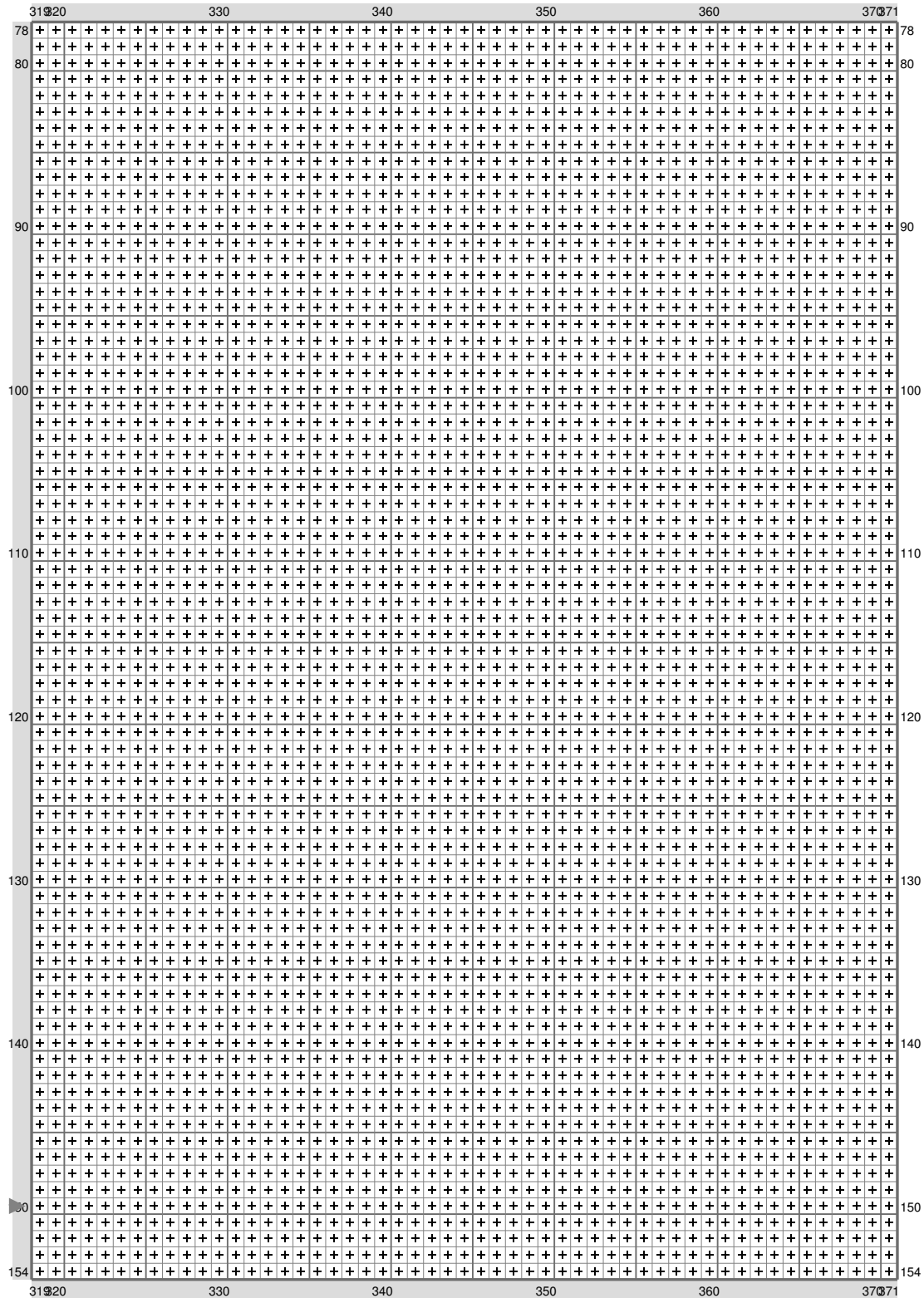
(This chart is printed using KG-Chart LE for Cross Stitch.)

Untitled



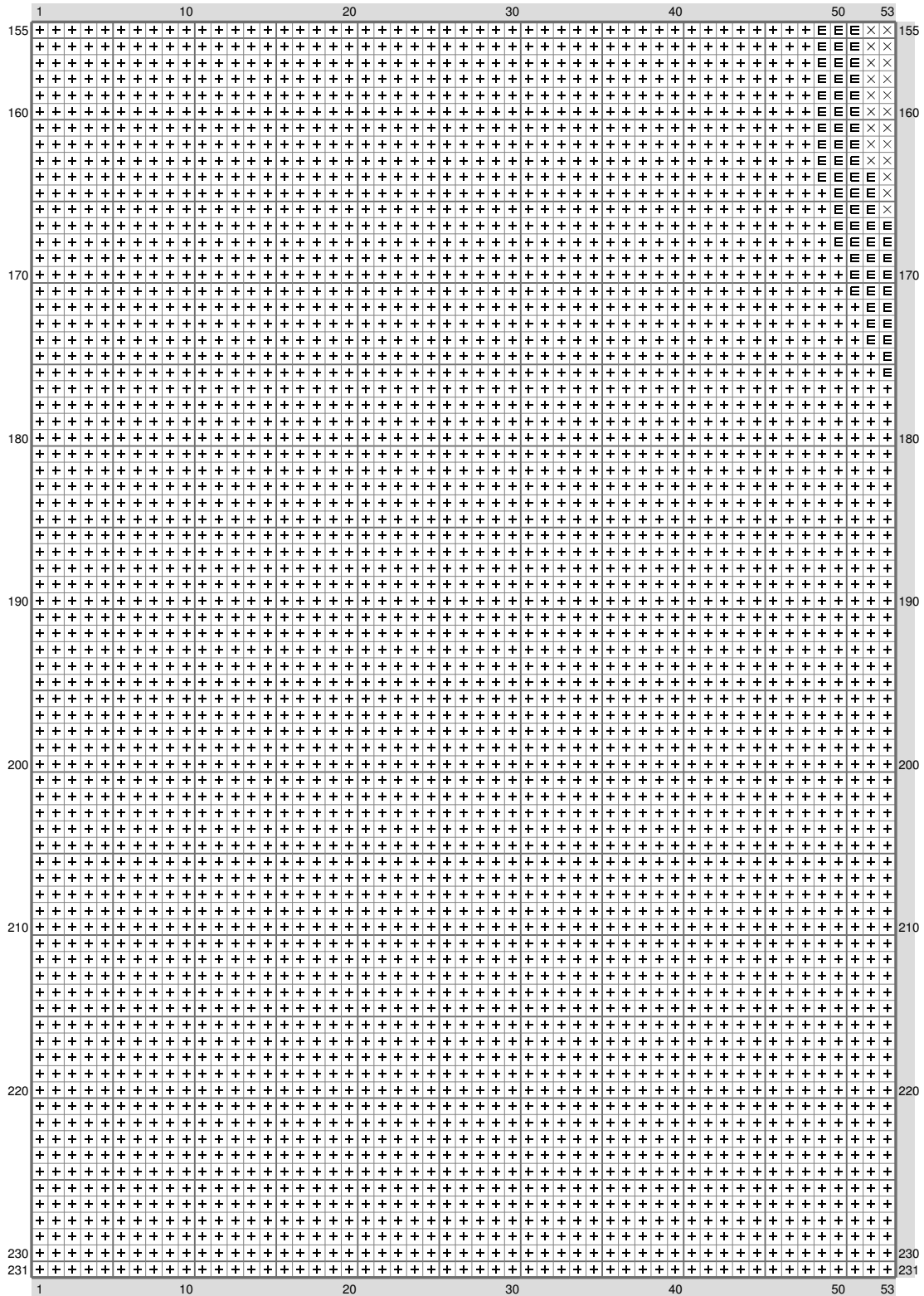
(This chart is printed using KG-Chart LE for Cross Stitch.)

Untitled



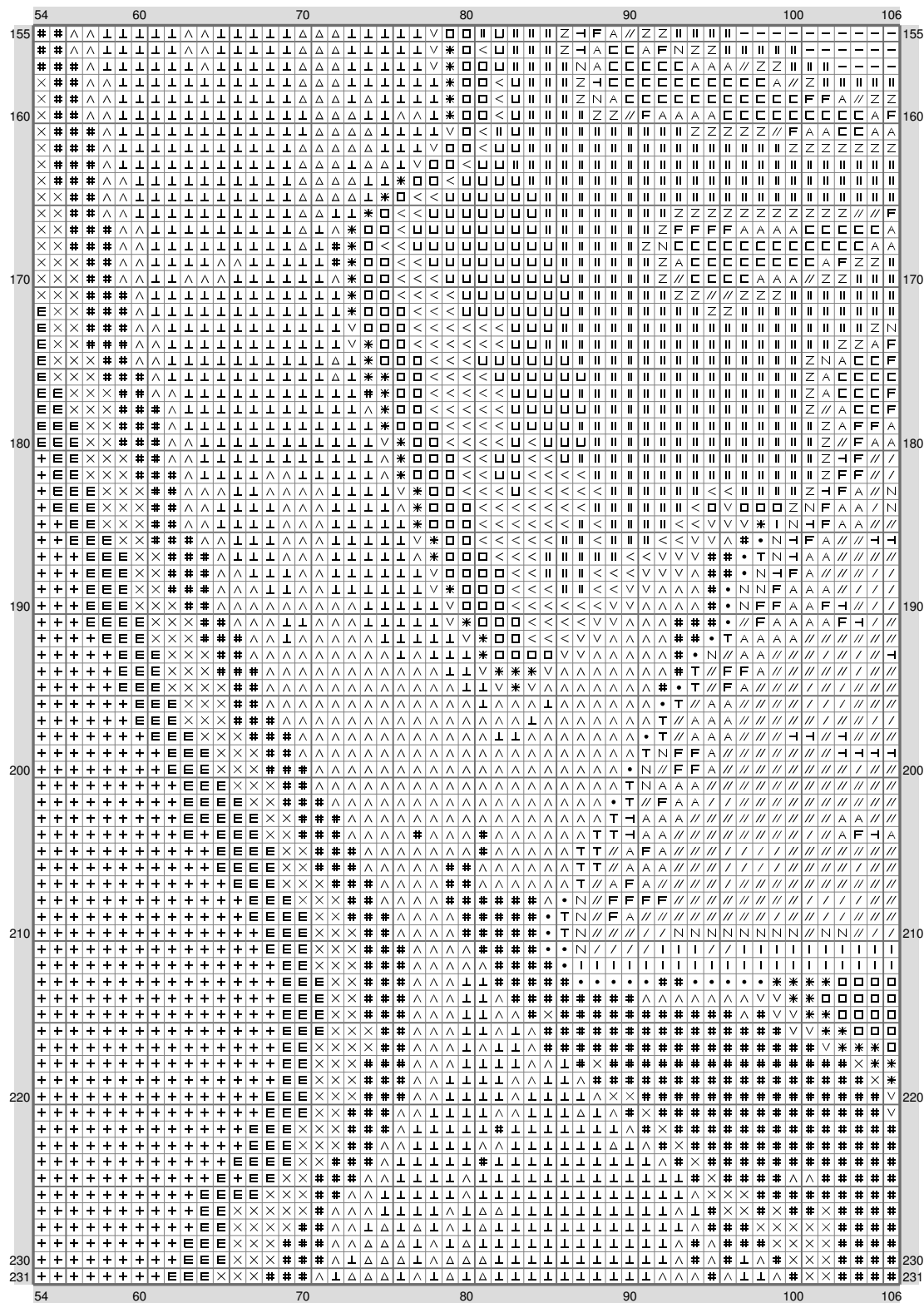
(This chart is printed using KG-Chart LE for Cross Stitch.)

Untitled



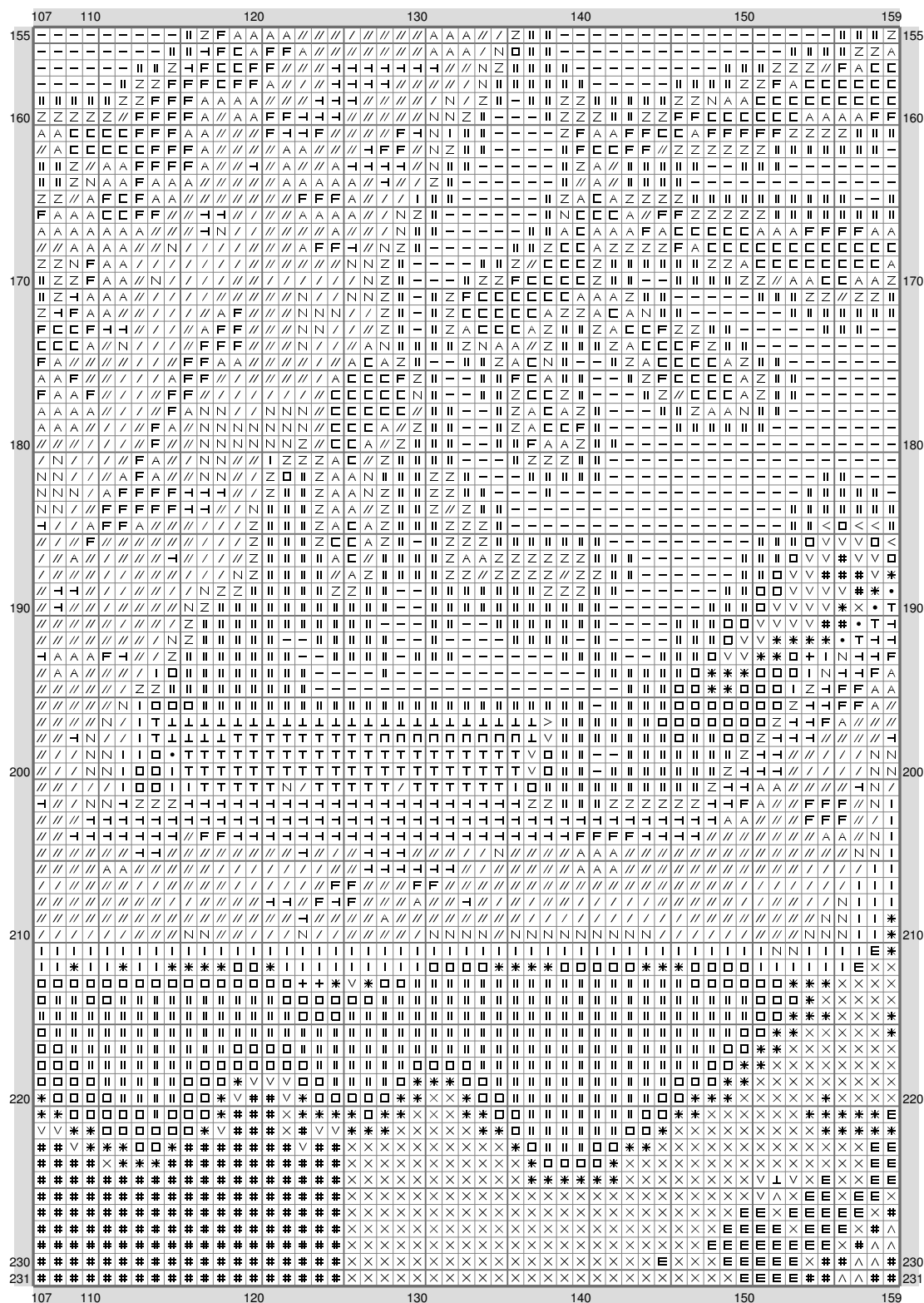
(This chart is printed using KG-Chart LE for Cross Stitch.)

Untitled

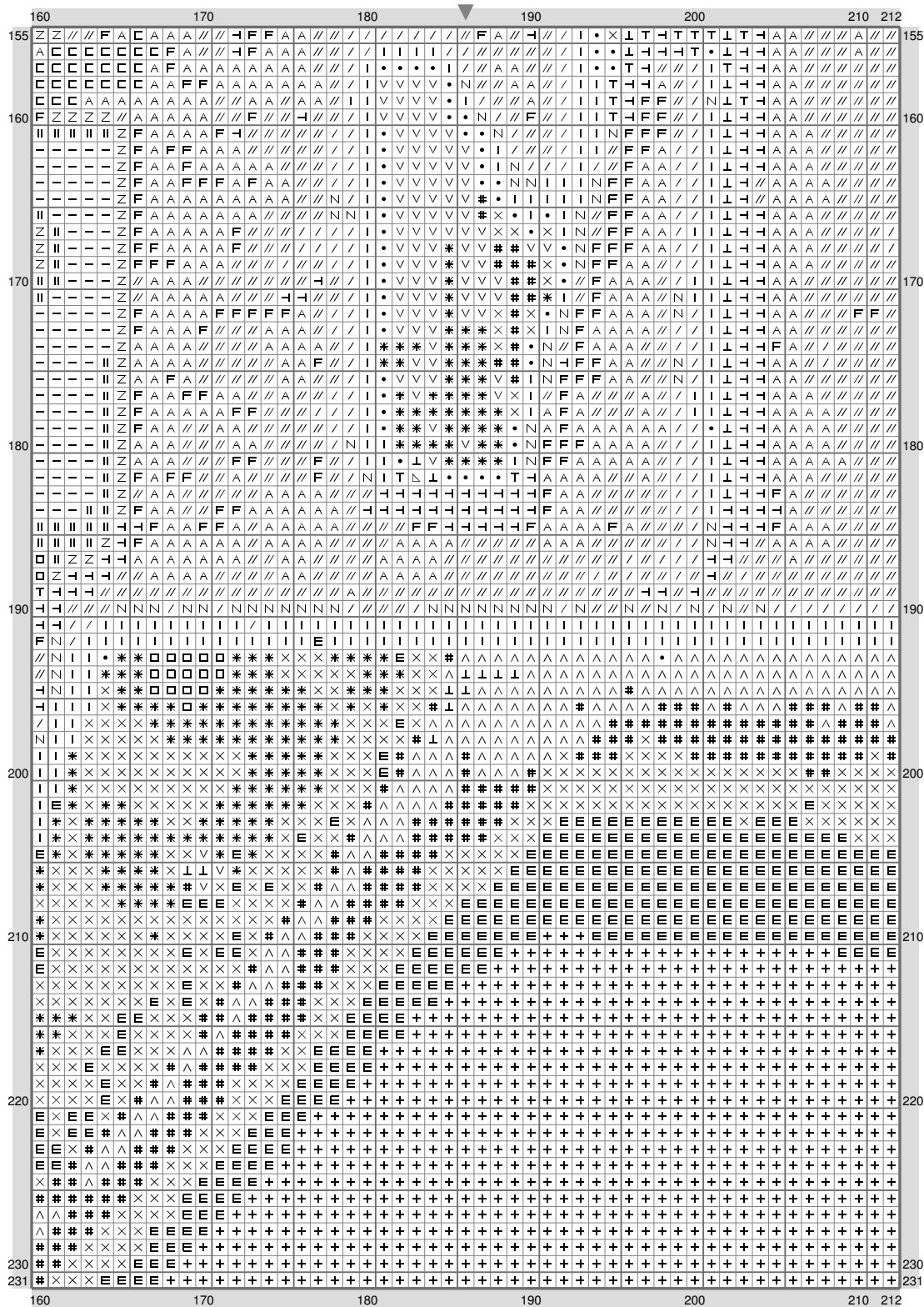


(This chart is printed using KG-Chart LE for Cross Stitch.)

Untitled

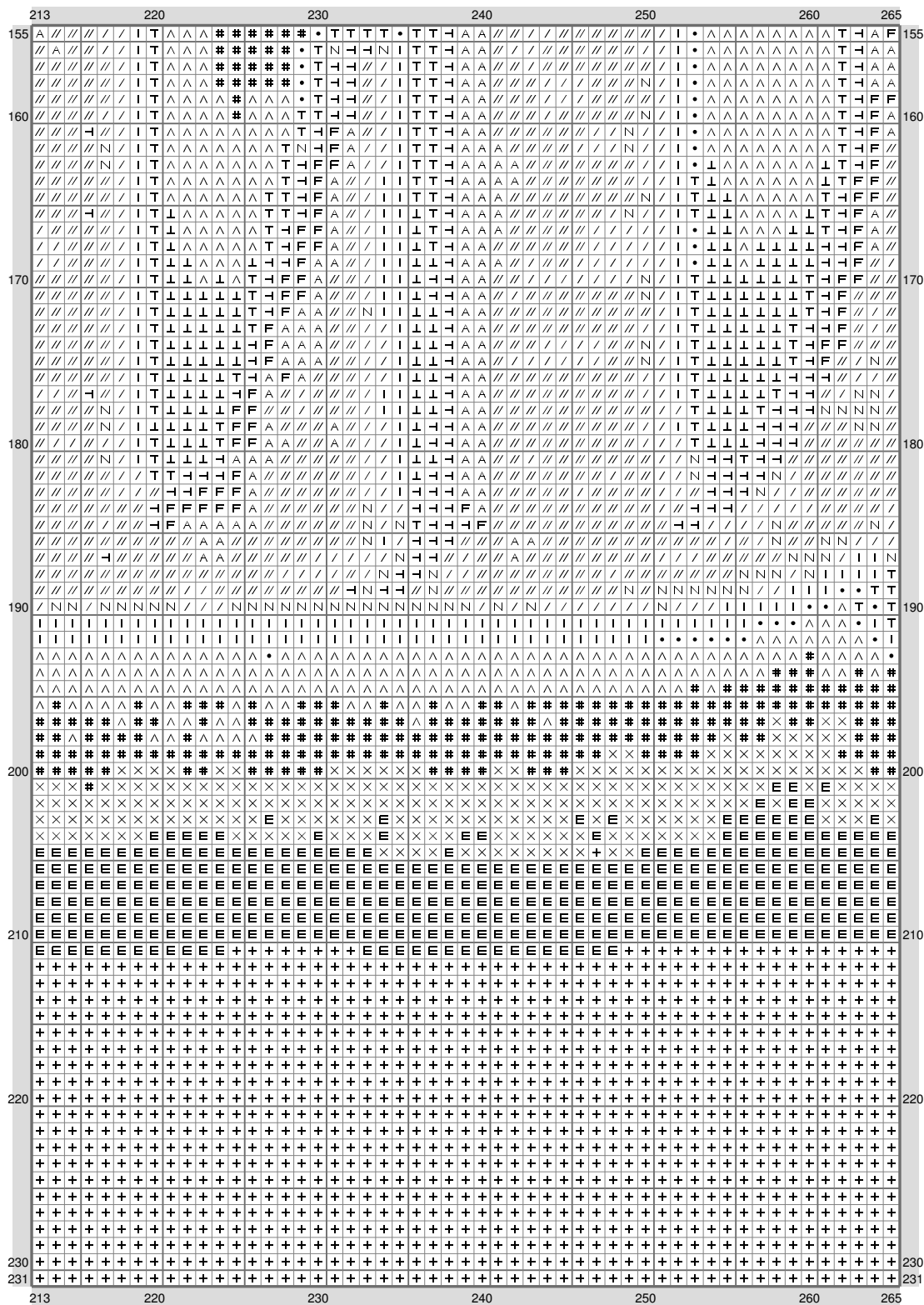


Untitled



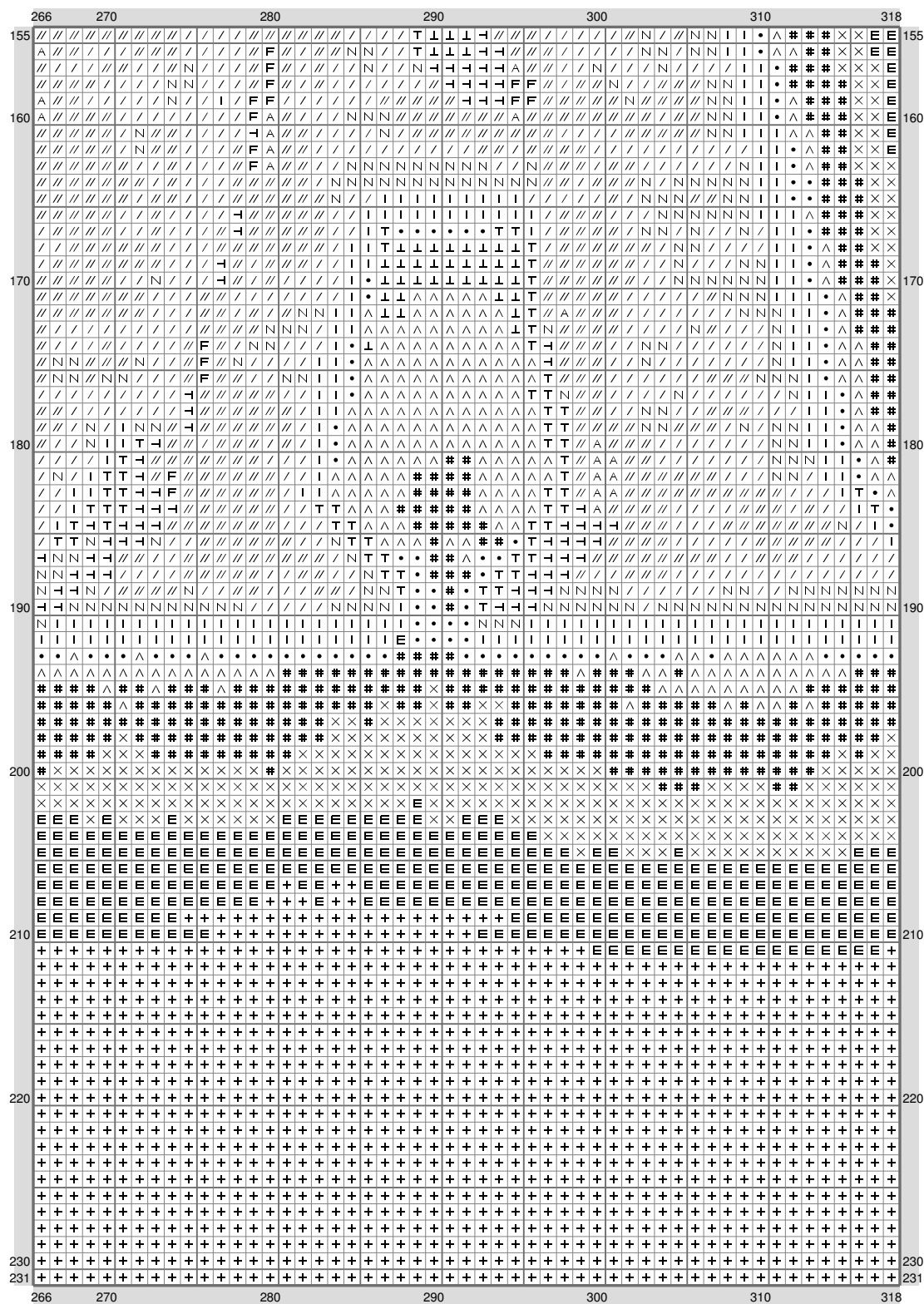
(This chart is printed using KG-Chart LE for Cross Stitch.)

Untitled

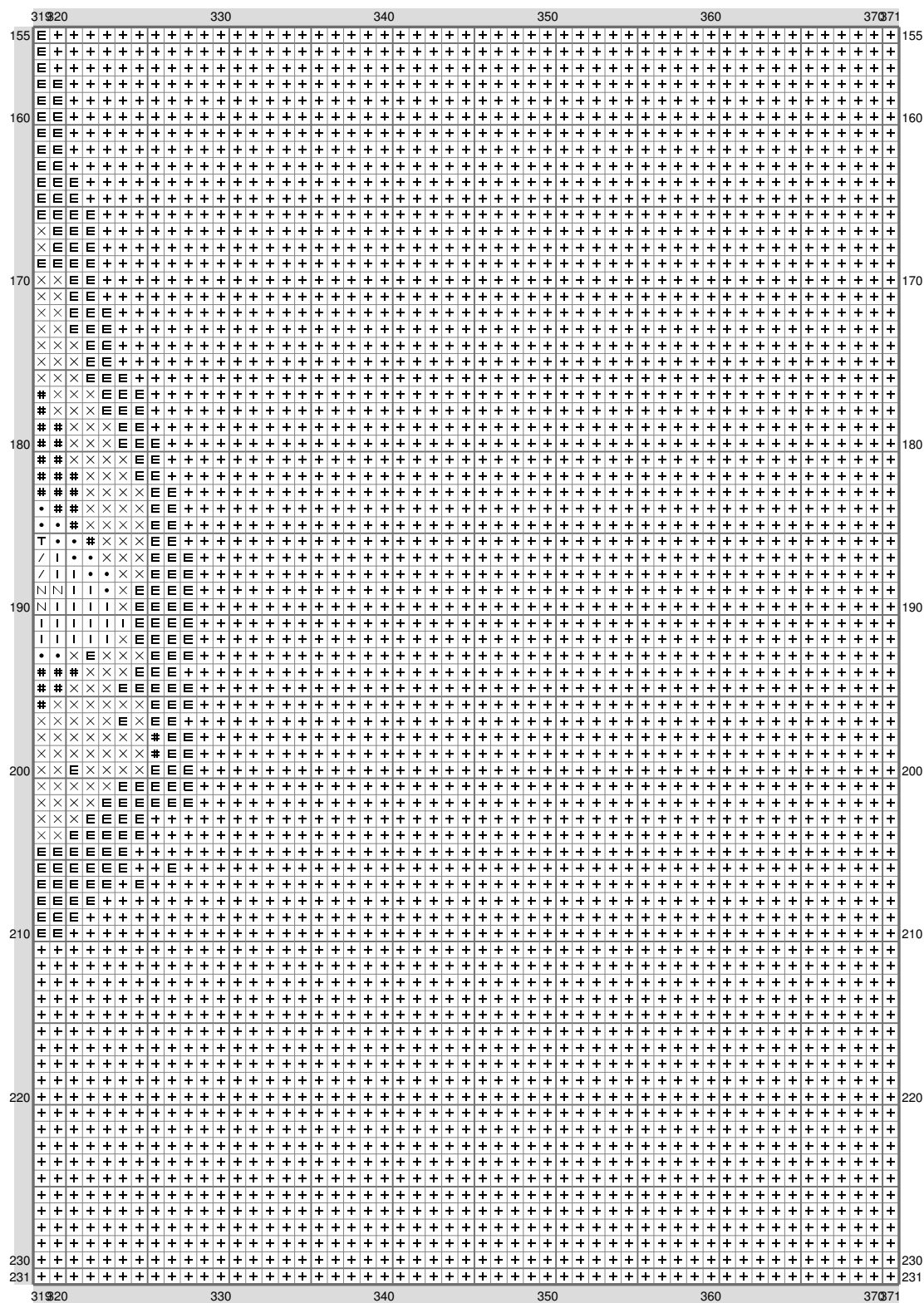


(This chart is printed using KG-Chart LE for Cross Stitch.)

Untitled

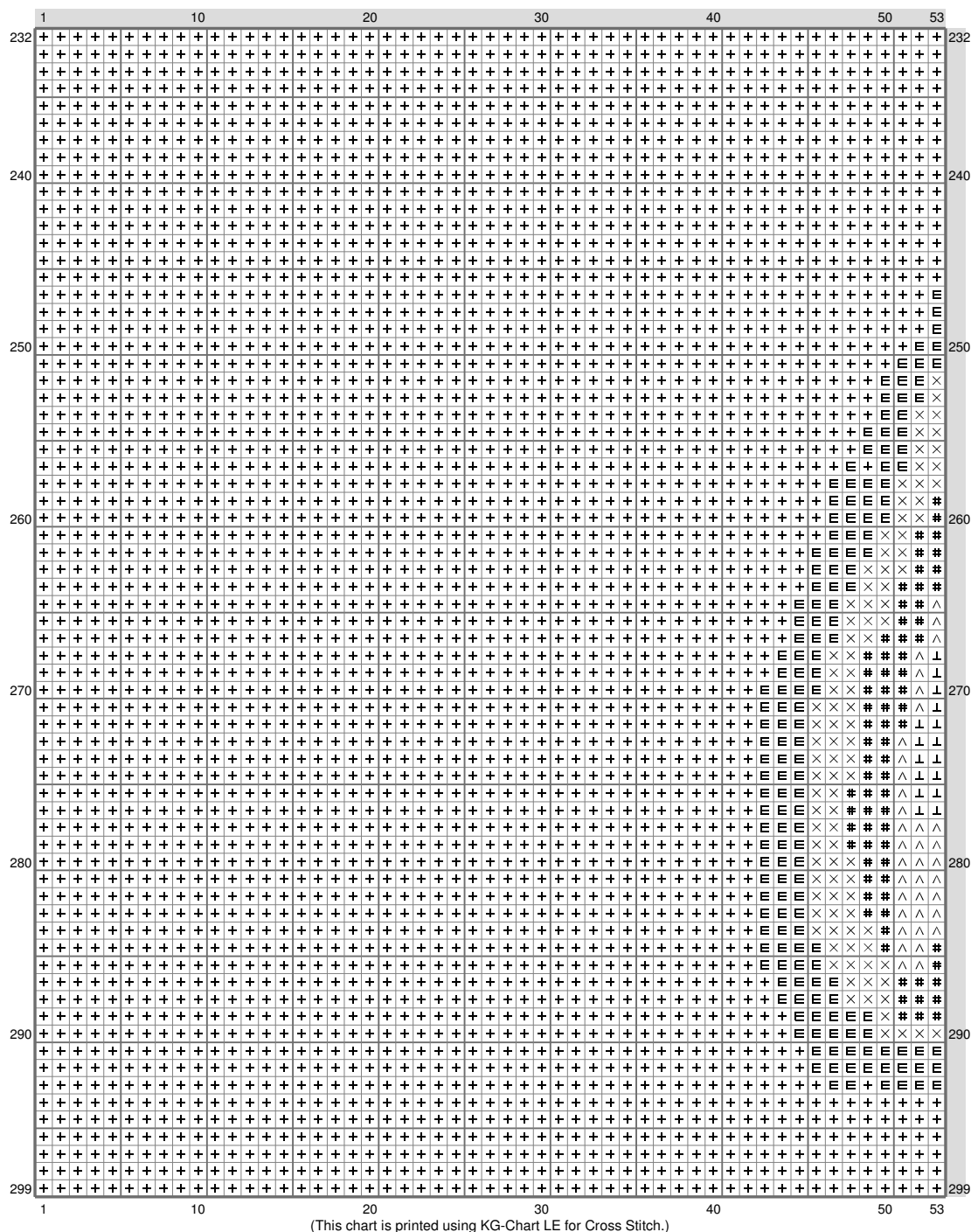


Untitled

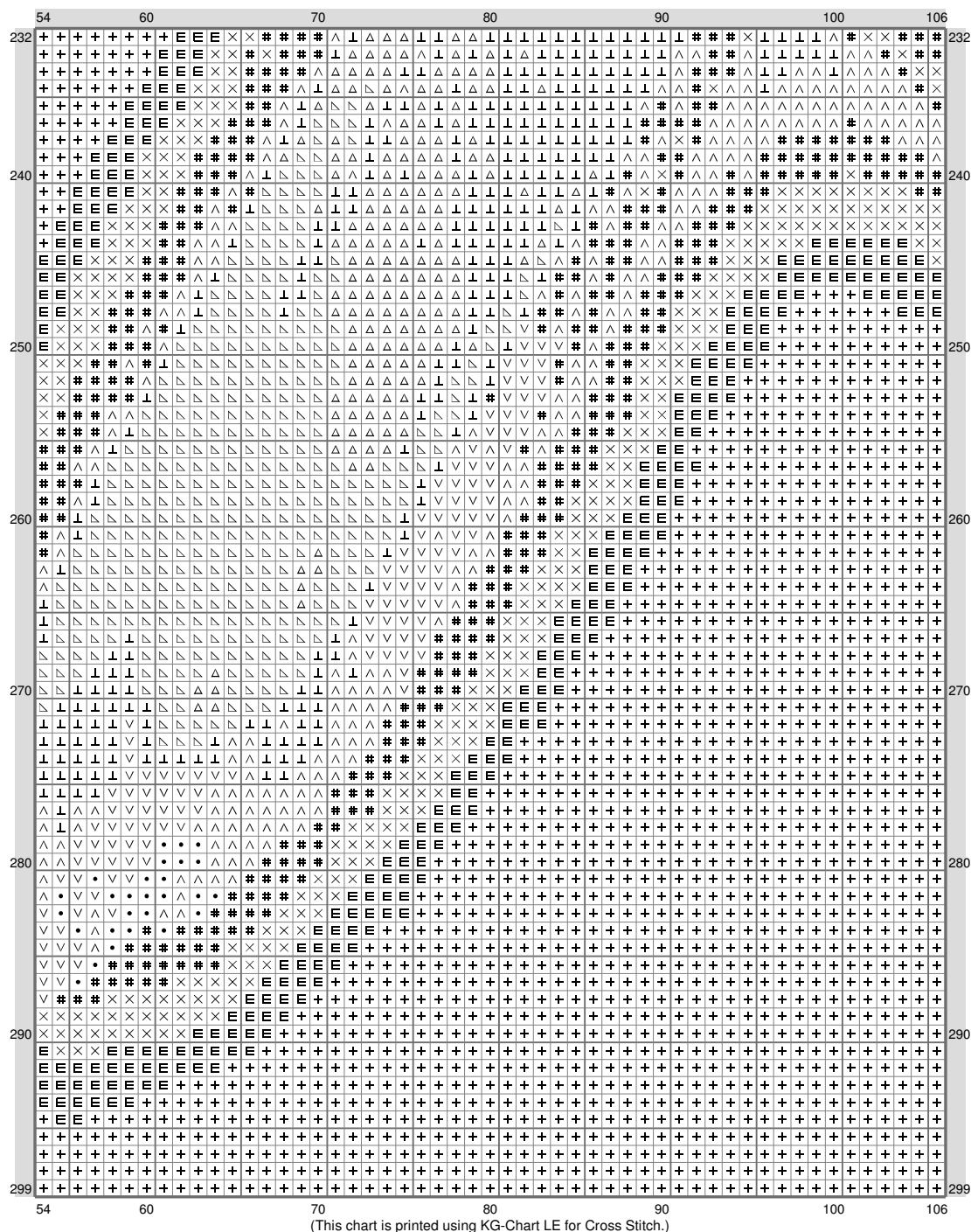


(This chart is printed using KG-Chart LE for Cross Stitch.)

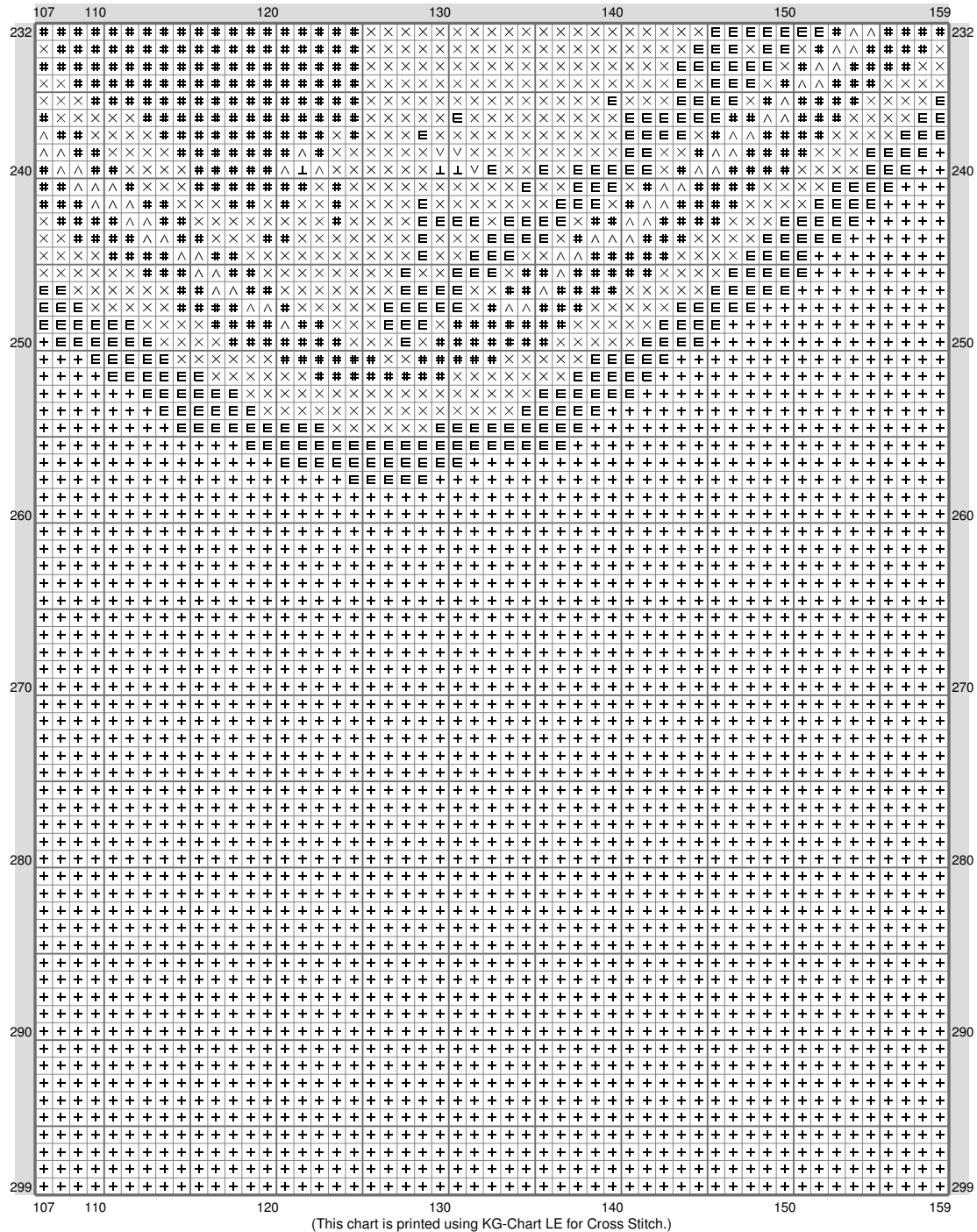
Untitled



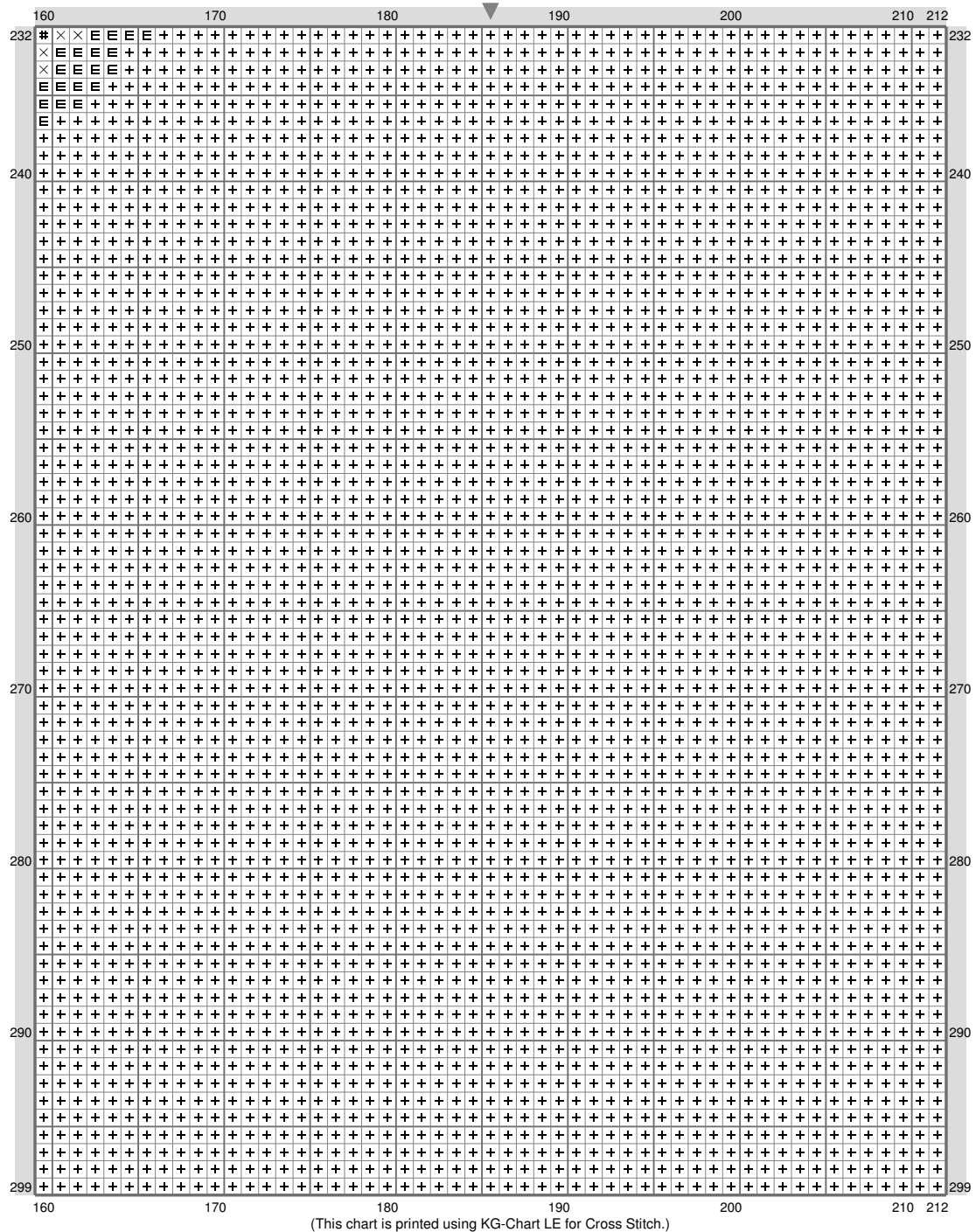
Untitled



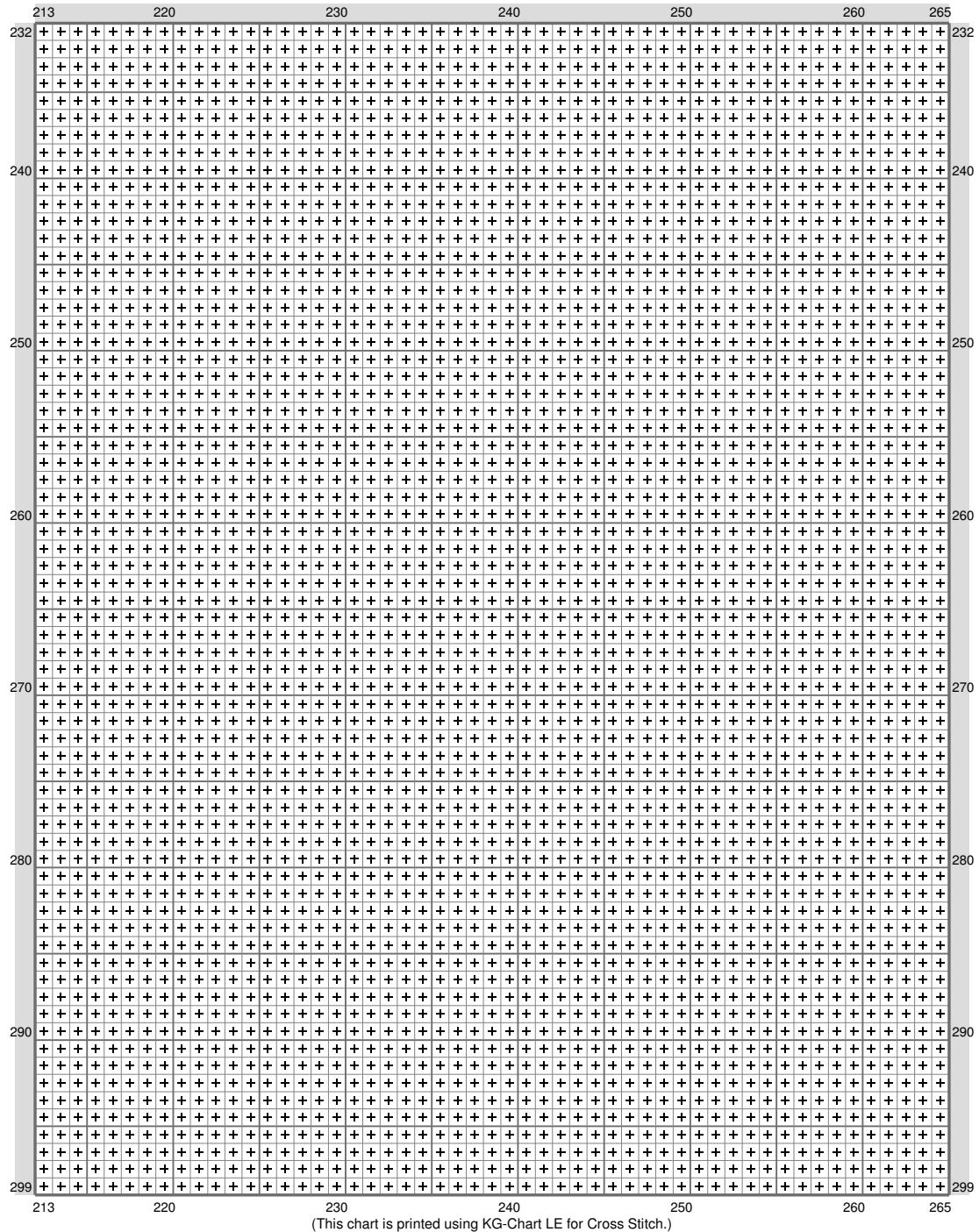
Untitled



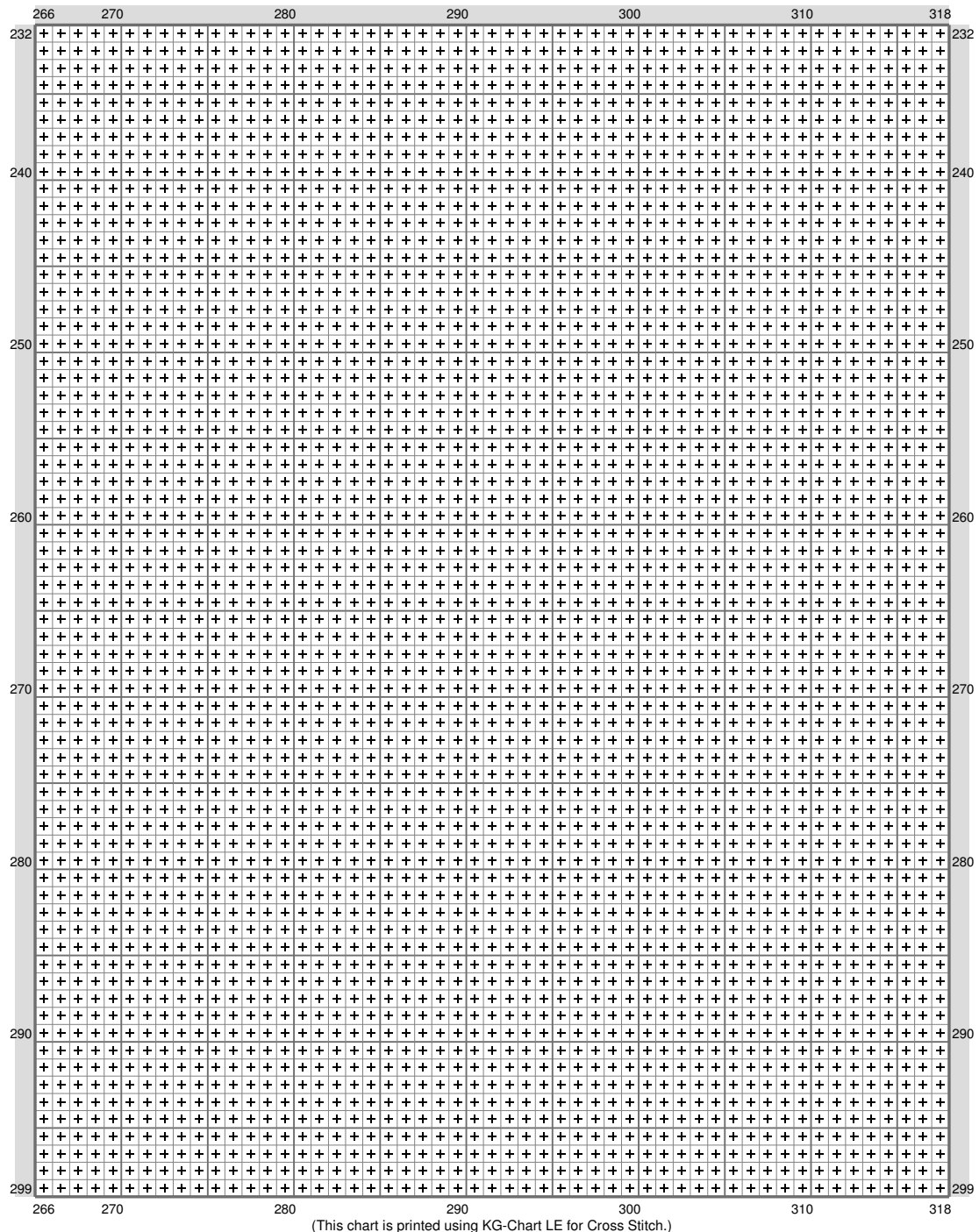
Untitled



Untitled

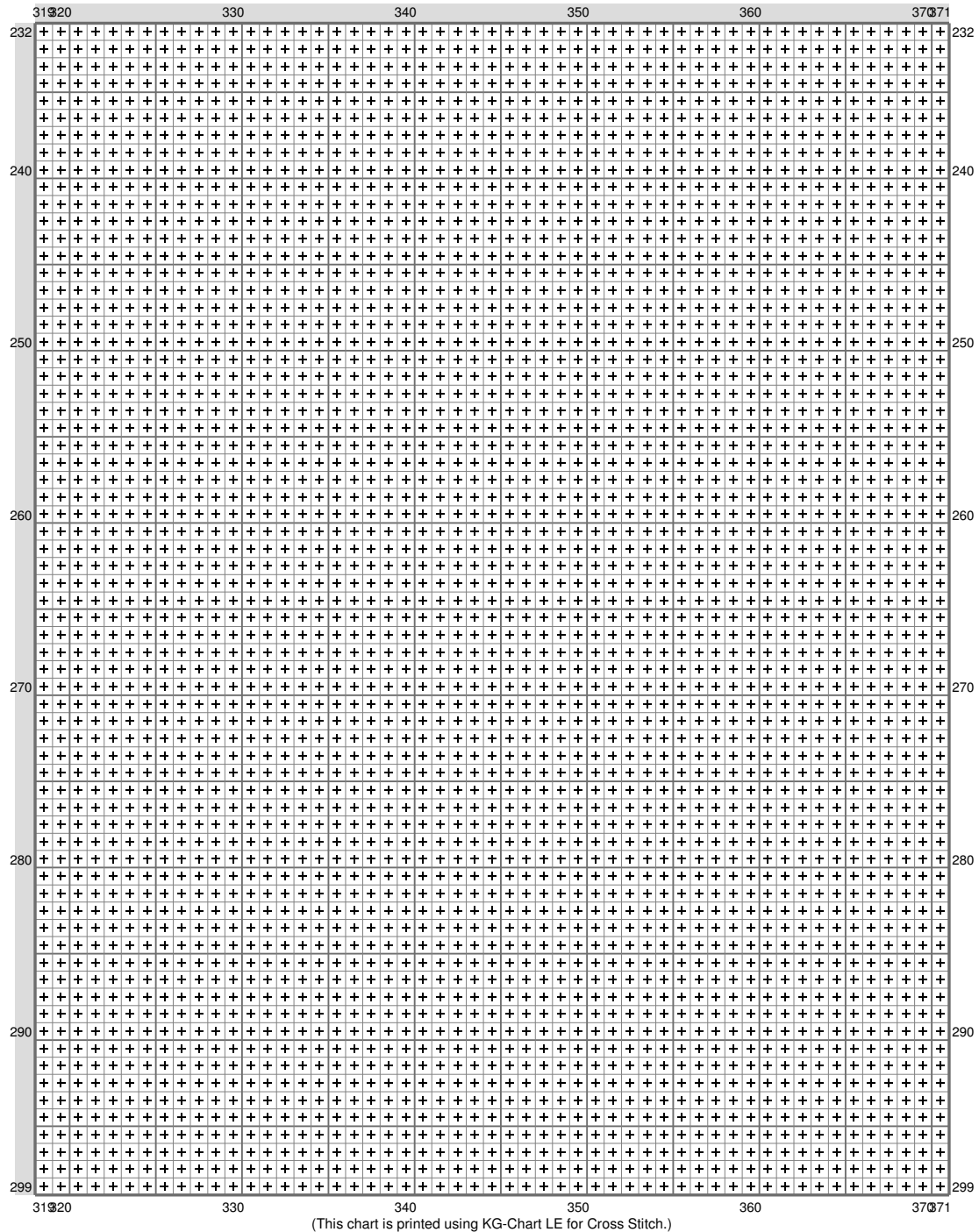


Untitled



(This chart is printed using KG-Chart LE for Cross Stitch.)

Untitled









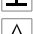





















Untitled

Stitch Count: 371w x 299h
Finished Size: 104.70 cm x 84.38 cm (18 ct./inch)
Cloth: Aida
Cloth's Color: White
of colors: 28 Colors

Color Table (DMC)

Cross Stitch

	158	(962 ct)
	161	(374 ct)
	310	(68105 ct)
	311	(830 ct)
	321	(3654 ct)
	349	(346 ct)
	500	(809 ct)
	610	(555 ct)
	611	(2303 ct)
	666	(1956 ct)
	676	(416 ct)
	796	(1980 ct)
	809	(313 ct)
	815	(1655 ct)
	822	(1661 ct)
	934	(4490 ct)
	935	(4122 ct)
	939	(3867 ct)
	973	(351 ct)
	3031	(515 ct)
	3328	(1708 ct)
	3371	(1017 ct)
	3685	(469 ct)
	3777	(733 ct)
	3781	(2891 ct)
	3799	(1706 ct)
	3801	(1638 ct)
	3843	(1503 ct)