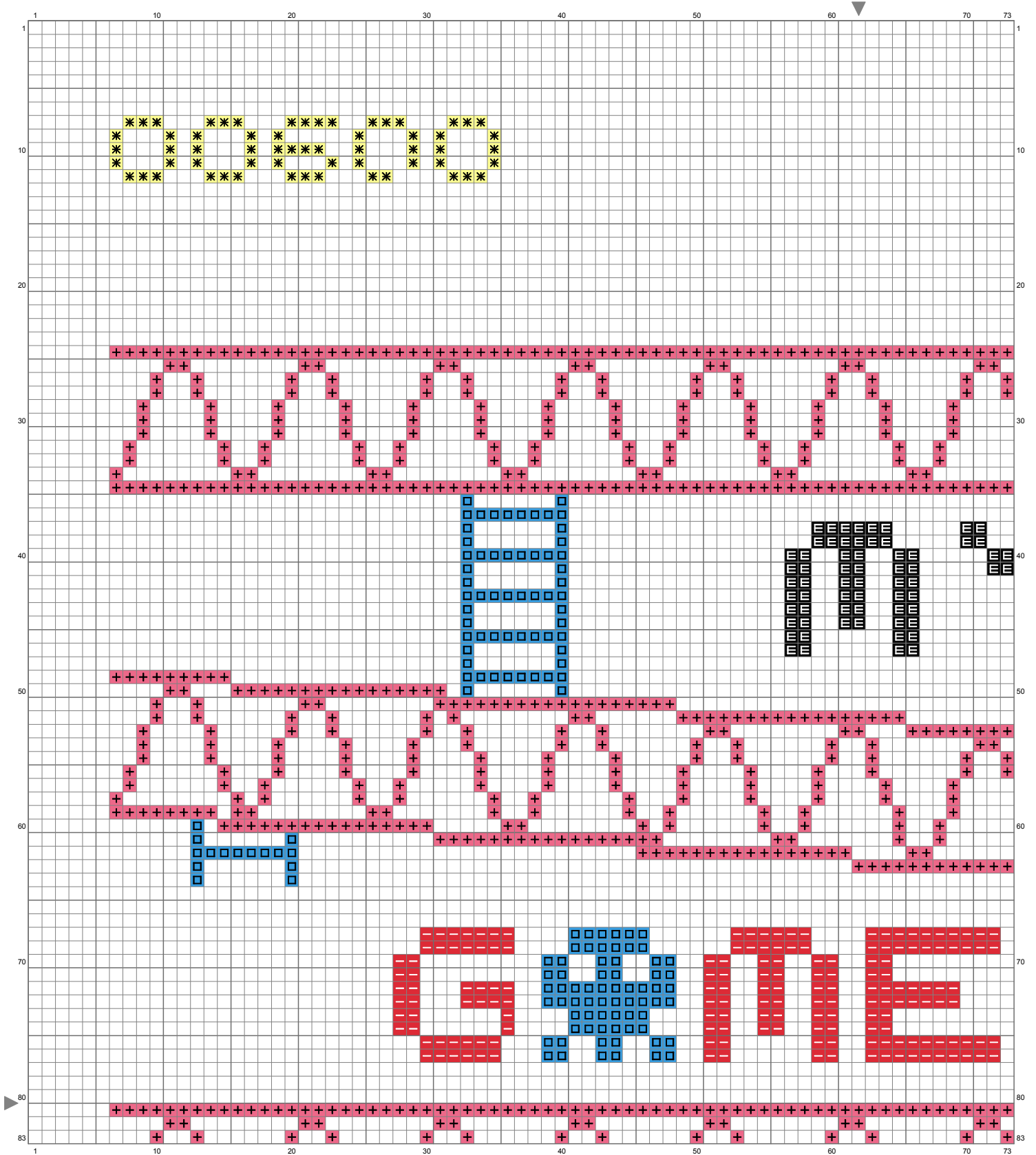
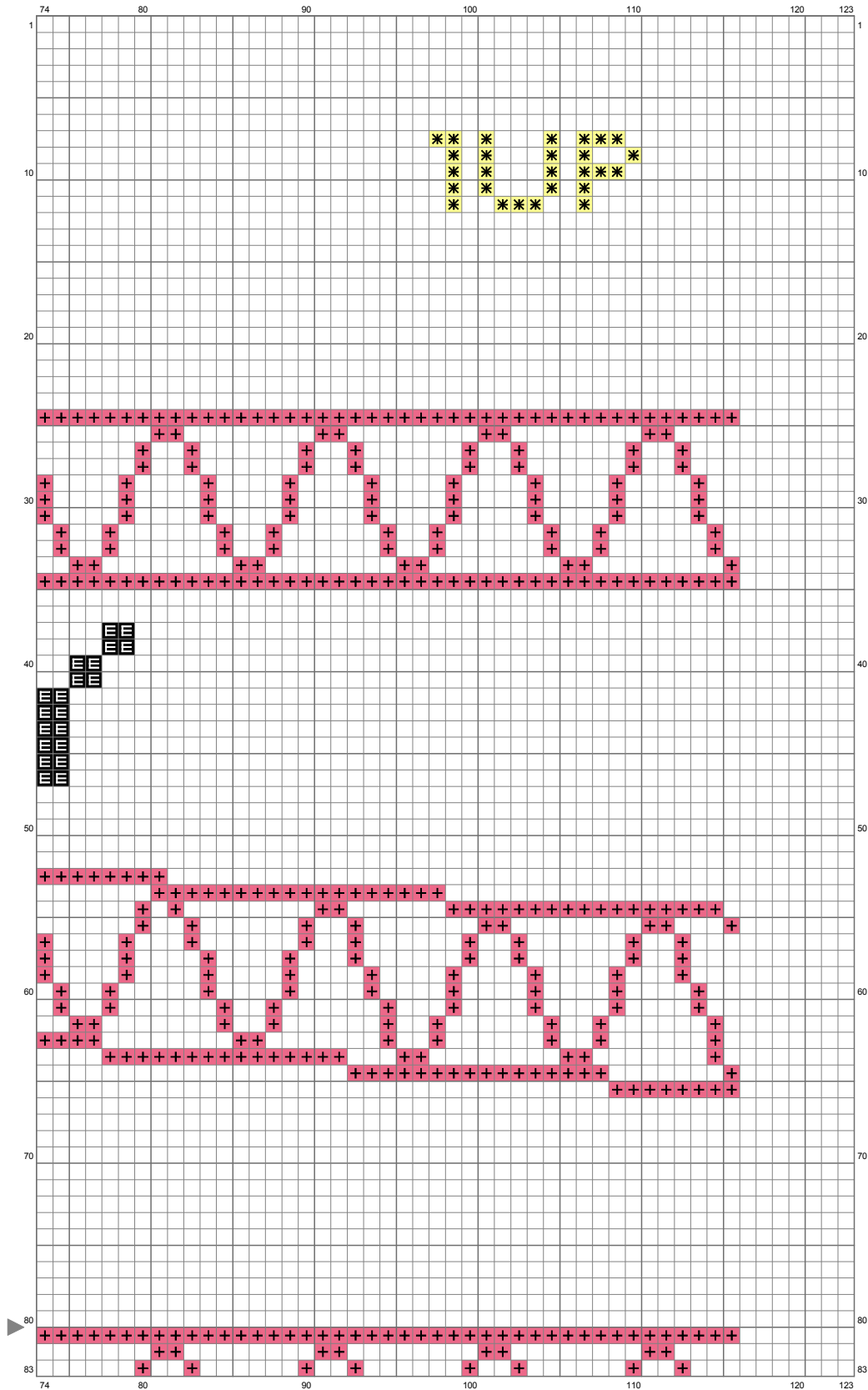


# my game is classic



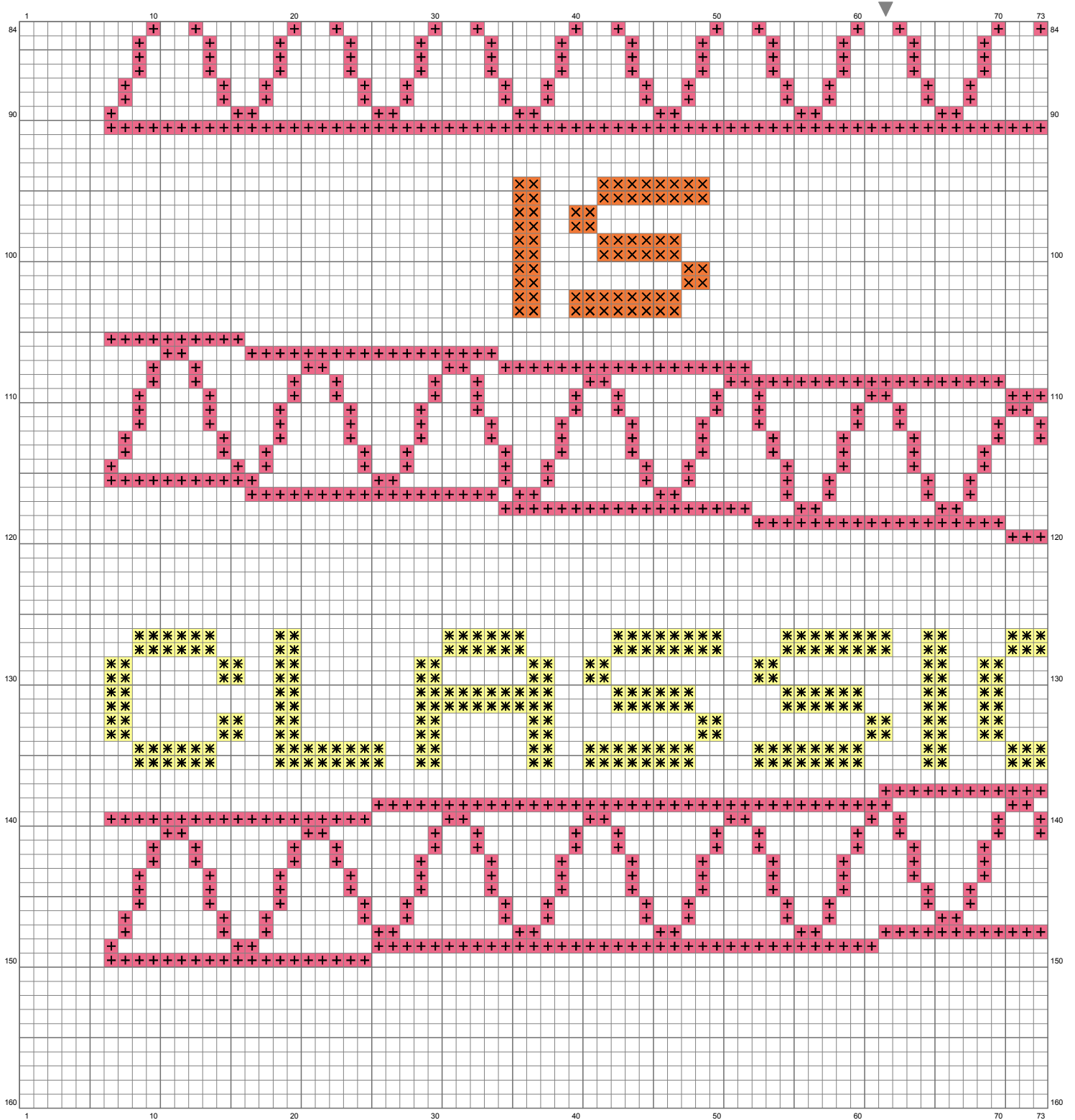
(This chart is printed using KG-Chart LE for Cross Stitch.)

# my game is classic



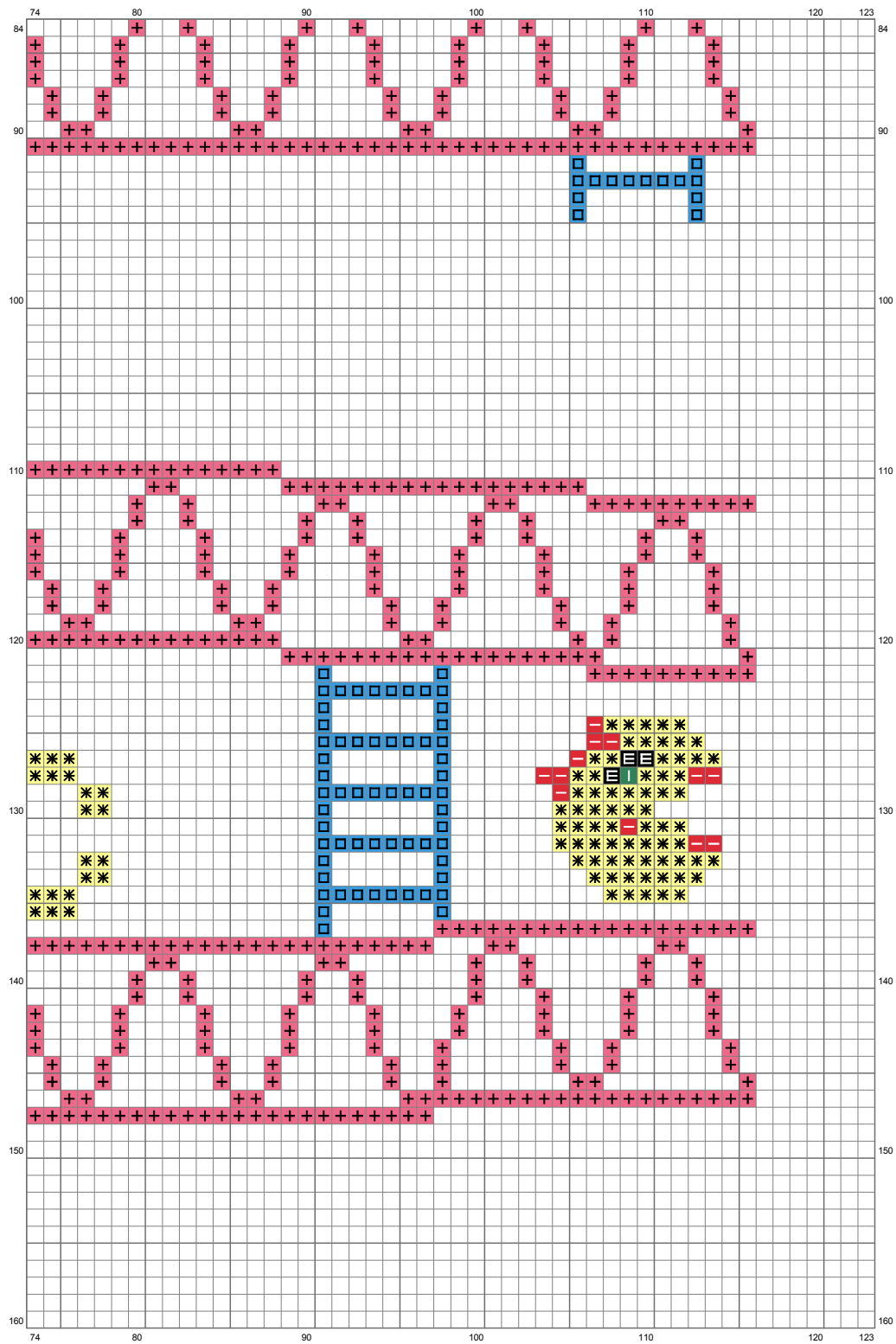
(This chart is printed using KG-Chart LE for Cross Stitch.)

# my game is classic



(This chart is printed using KG-Chart LE for Cross Stitch.)

# my game is classic



(This chart is printed using KG-Chart LE for Cross Stitch.)

## my game is classic

Stitch Count:123w x 160h

Cloth:Aida Cloth's Color:White








Finished Size:34.71 cm x 45.15 cm (18 ct./inch)

Total 7 Colors

### Color Table (DMC)

---

#### Cross Stitch

	335	(2095 ct)
	310	(87 ct)
	996	(218 ct)
	666	(178 ct)
	3853	(72 ct)
	445	(458 ct)
	700	(1 ct)